

An Introduction to Hywind Scotland Pilot Park

Kelly Meulepas, Peterhead Public Event, 20-21 May 2014

Statoil

Statoil is an international energy company with operations in 36 countries. Building on 40 years of experience from oil and gas production on the Norwegian continental shelf, we are committed to accommodating the world's energy needs in a responsible manner, applying technology and creating innovative business solutions.



Project objective



Prototype



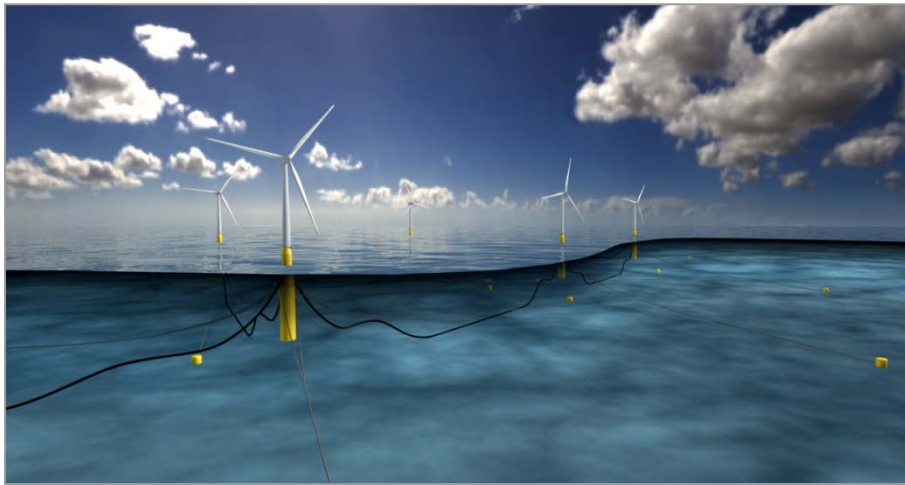
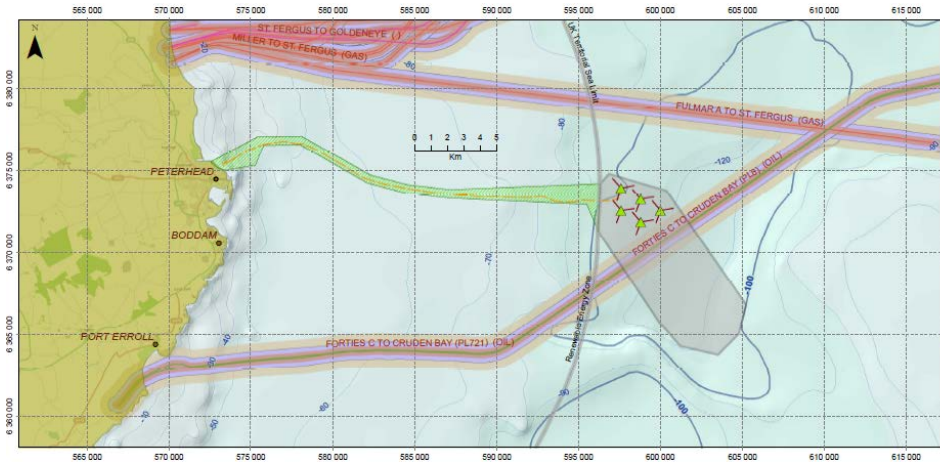
Pilot Park



Large parks

Demonstrate cost-efficient and low risk solutions for commercial scale parks

Hywind Scotland Pilot Park



Major milestones:

Final investment decision	2015
Onshore construction	2016/2017
Offshore installation	2016/2017
In operation	2017

Location of onshore infrastructure



Sources: Esri, DeLorme, USGS, Intermap, iPC, Esri Japan, METI, Esri (Hong Kong), Esri (Tha

Legend

- Route Alignment
- Trench
- HDD
- Surface laid ducting with concrete mattress protection only
- Surface laid ducting with concrete mattress protection and clump weights
- Junction Box
- Substation

01	23/04/2014	OA	For information	J
Rev	Date	Drawn	Description	C



Mott MacDonald
 Environment
 Demeter Ho
 Station Roar
 Cambridge,
 United Kingd
 T +44 (0)12
 F +44 (0)12
 W www.mot

Client:
 Statoil Wind Limited

Title:
 Hywind Scotland Pilot Park Project Task 3: Lan
 Figure 1.1

Designed	JdV	Check	AI
----------	-----	-------	----



Consenting process

<u>Offshore elements</u>		
Works	Consent	Determining authority
Parts of the Project outside 12 nm (the turbines, moorings, inter array cables and parts of the export cable outside)	Marine Licence Under Section 6 of the Marine and Coastal Access Act 2009	Scottish Ministers (through Marine Scotland)
Parts of the Project within 12 nm below Mean High Water Springs (MHWS) (the export cable).	Marine licence under Section 16 of the Marine (Scotland) Act 2010	Scottish Ministers (through Marine Scotland)
The turbines, moorings, inter array cables and export cable.	Energy Act 2004 (Decommissioning Programme)	Secretary of State (DECC)
<u>Onshore elements</u>		
Landfall, onshore cable route and onshore substation.	Planning permission under Section 28 of the Town and Country Planning (Scotland) Act 1997	Aberdeenshire Council

There's never been a better
time for **good ideas**

This presentation, including the contents and arrangement of the contents of each individual page or the collection of the pages, are owned by Statoil. Copyright to all material including, but not limited to, written material, photographs, drawings, images, tables and data remains the property of Statoil. All rights reserved. Any other kind of use, reproduction, translation, adaption, arrangement, any other alteration, distribution or storage of this presentation, in whole or in part, without the prior written permission of Statoil is prohibited. The information contained in this presentation may not be accurate, up to date or applicable to the circumstances of any particular case, despite our efforts. Statoil cannot accept any liability for any inaccuracies or omissions.

An Introduction to Hywind Scotland Pilot
Park

Kelly Meulepas
Engineering Manager
khou@statoil.com
Tel: +4791364135

www.statoil.com