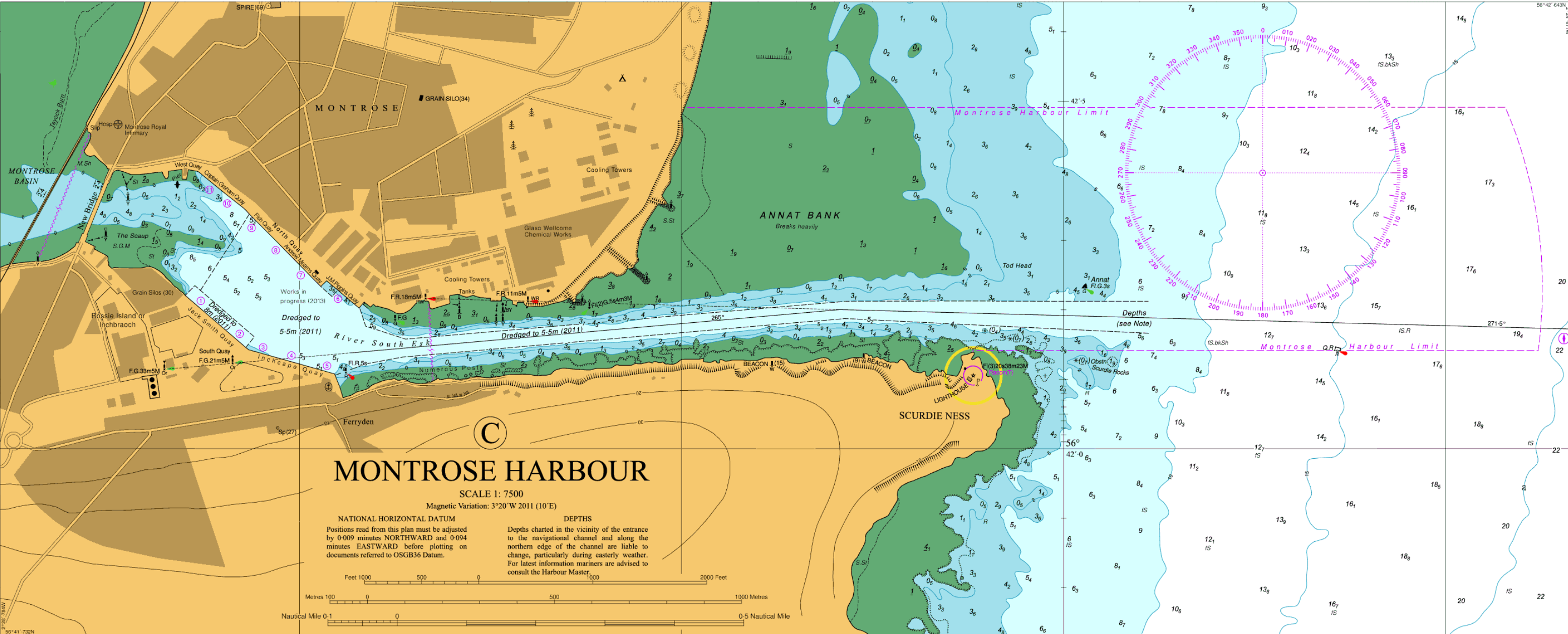
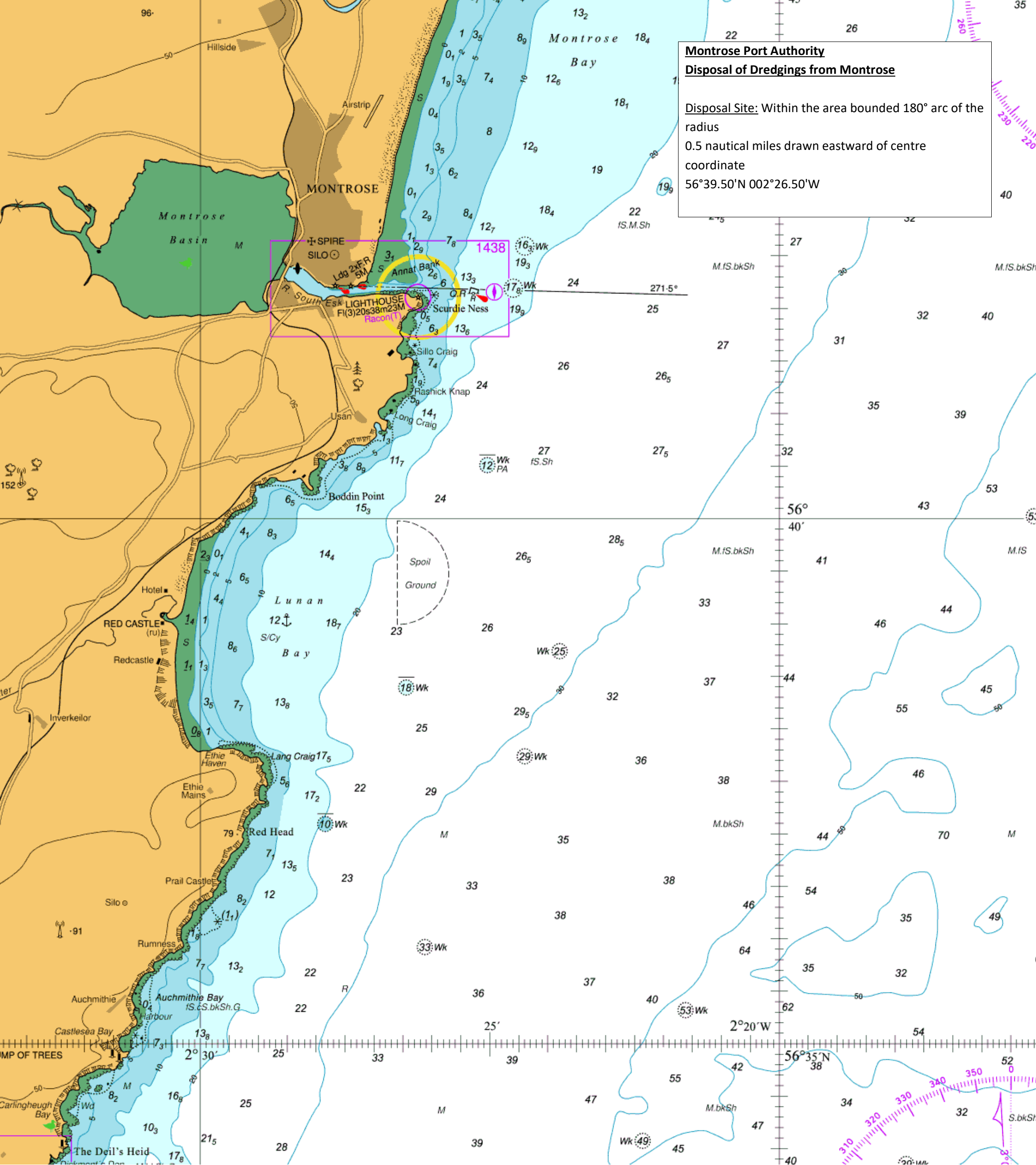


**Montrose Port Authority**  
**Disposal of Dredgings from Montrose**

Disposal Site Within the area bounded 180° arc of the radius  
 0.5 nautical miles drawn eastward of centre coordinate  
 56°39.50'N 002°26.50'W



© British Crown Copyright 2014. All rights reserved.  
 NOT TO BE USED FOR NAVIGATION  
 Under the bilateral agreement between us the UK Hydrographic Office makes the accompanying Geotiff images of Admiralty Charts 190, 210 and 1438 available to Montrose Port Authority for a period of one year from the 11th March 2014 solely for the purpose of facilitating a sea-disposal Licence. The data is supplied under the conditions shown below.  
**CONDITIONS OF RELEASE**  
 The supplied material is protected by Crown Copyright. No part of the supplied material may be reproduced, stored in a retrieval system or transmitted in any form or by any means, electronic, mechanical, photocopying, recording or otherwise except as required to fulfil the purpose above.  
 The copyright material, its derivatives and its outputs may not be sold or distributed or commercially exploited in either an original or derived form without the prior written permission of the UK Hydrographic Office.  
 For the avoidance of doubt, the Recipient shall not place or permit to be placed the supplied material, its derivatives and its outputs on a computer accessible to Third Parties whether via the Internet or otherwise.  
 The release of the supplied material in no way implies that the UK Hydrographic Office will supply further material or offer an extension to this licence agreement.  
**DISCLAIMER**  
 Whilst the UK Hydrographic Office has endeavoured to ensure that the material supplied is suitable for the purpose, it accepts no liability (to the maximum extent permitted by law) for any damage or loss of any nature arising from its use. The material supplied is used entirely at the Recipient's own risk.



© British Crown Copyright 2014. All rights reserved.

NOT TO BE USED FOR NAVIGATION

Under the bilateral agreement between us the UK Hydrographic Office makes the accompanying Geotiff images of Admiralty Charts 190, 210 and 1438 available to Montrose Port Authority for a period of one year from the 11th March 2014 solely for the purpose of facilitating a sea-disposal Licence. The data is supplied under the conditions shown below.

**CONDITIONS OF RELEASE**

The supplied material is protected by Crown Copyright. No part of the supplied material may be reproduced, stored in a retrieval system or transmitted in any form or by any means, electronic, mechanical, photocopying, recording or otherwise except as required to fulfil the purpose above.

The copyright material, its derivatives and its outputs may not be sold or distributed or commercially exploited in either an original or derived form without the prior written permission of the UK Hydrographic Office.

For the avoidance of doubt, the Recipient shall not place or permit to be placed the supplied material, its derivatives and its outputs on a computer accessible to Third Parties whether via the Internet or otherwise.

The release of the supplied material in no way implies that the UK Hydrographic Office will supply further material or offer an extension to this licence agreement.

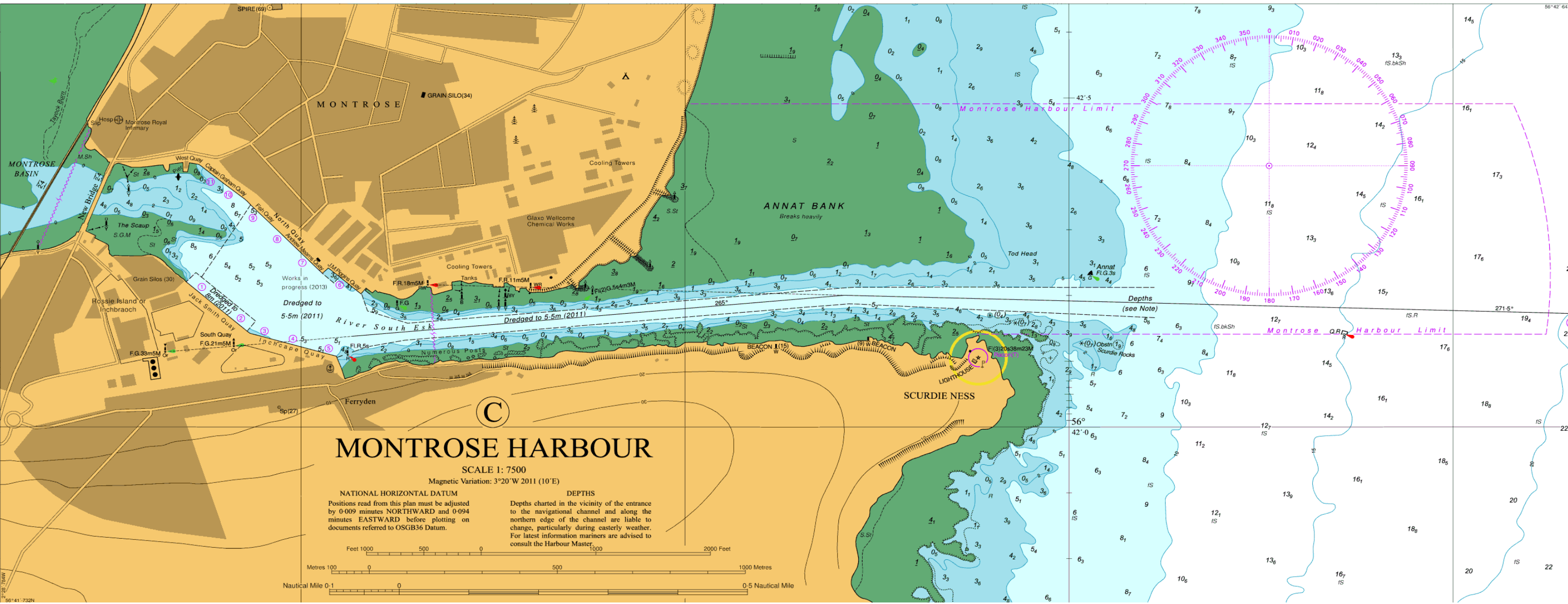
**DISCLAIMER**

Whilst the UK Hydrographic Office has endeavoured to ensure that the material supplied is suitable for the purpose, it accepts no liability (to the maximum extent permitted by law) for any damage or loss of any nature arising from its use. The material supplied is used entirely at the Recipient's own risk.



**Montrose Port Authority**  
**Harbour Limits**

The Harbour of Montrose shall comprise the area within a line commencing at a point on the level of MHWS 60metres or thereby due north(true) from Scurdie Ness Lighthouse as shown on the 1/10560 Ordnance Survey Sheet NO 75NW marked 2Montrose Harbour Limits” proceeding thence in a north westerly direction for a distance of 400 metres or thereby to position latitude 56o 42` 19.2” N. Longitude 02o 26` 20.9” E., thence in a west-south westerly direction following generally the level of MLWS as shown on the said map for a distance of 860 metres or thereby to a position latitude 56o 42` 12.42 N. longitude 02o 27` 09.5” W., thence due north (true) to the line of MHWS, thence following the level of MHWS on the north bank of the river South Esk in a westerly direction till it meets the New Bridge connection Montrose and Rossie Island to a point on the level of MHWS on Rossie Island as shown on the said Ordnance Map, thence following the said level in a south-easterly and westerly direction round Rossie Island till it meets Inch Bridge connecting Rossie Island with the south bank of the of the river South Esk, thence along the easterly face of Inch Bridge to a point on the level of MHWS as shown on the said Ordnance Map, thence along said level in an easterly direction to the point of commencement.



© British Crown Copyright 2014. All rights reserved.  
 NOT TO BE USED FOR NAVIGATION  
 Under the bilateral agreement between us the UK Hydrographic Office makes the accompanying Geotiff images of Admiralty Charts 190, 210 and 1438 available to Montrose Port Authority for a period of one year from the 11th March 2014 solely for the purpose of facilitating a sea-disposal Licence. The data is supplied under the conditions shown below.

**CONDITIONS OF RELEASE**  
 The supplied material is protected by Crown Copyright. No part of the supplied material may be reproduced, stored in a retrieval system or transmitted in any form or by any means, electronic, mechanical, photocopying, recording or otherwise except as required to fulfil the purpose above. The copyright material, its derivatives and its outputs may not be sold or distributed or commercially exploited in either an original or derived form without the prior written permission of the UK Hydrographic Office. For the avoidance of doubt, the Recipient shall not place or permit to be placed the supplied material, its derivatives and its outputs on a computer accessible to Third Parties whether via the Internet or otherwise. The release of the supplied material in no way implies that the UK Hydrographic Office will supply further material or offer an extension to this licence agreement.

**DISCLAIMER**  
 Whilst the UK Hydrographic Office has endeavoured to ensure that the material supplied is suitable for the purpose, it accepts no liability (to the maximum extent permitted by law) for any damage or loss of any nature arising from its use. The material supplied is used entirely at the Recipient’s own risk.