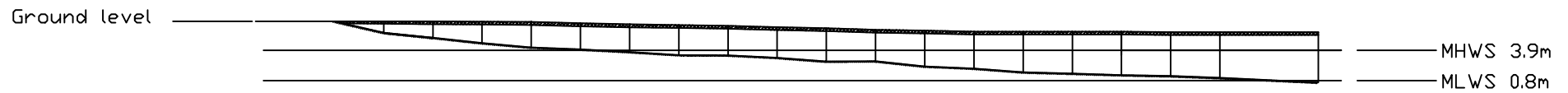
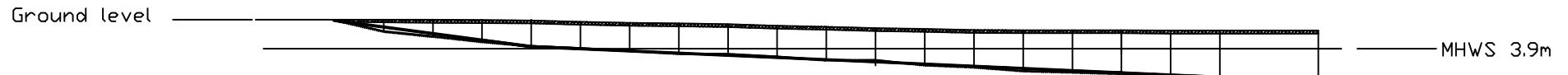


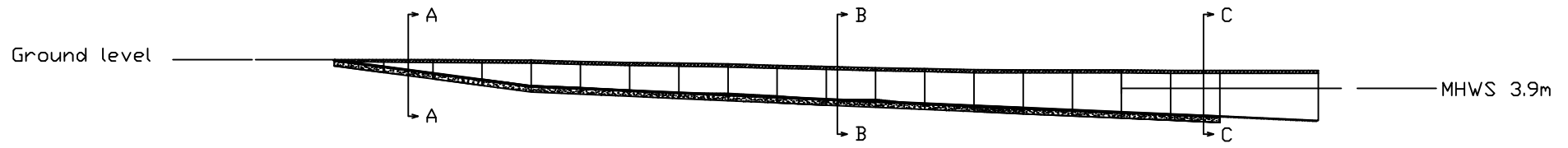
ELEVATION OF PIER



ELEVATION OF PIER



ELEVATION OF SLIPWAY - TWO GRADIENTS FROM Ch0 to Ch20 & Ch20 to Ch90  
ANGLES OF 8 Deg and 3 Deg



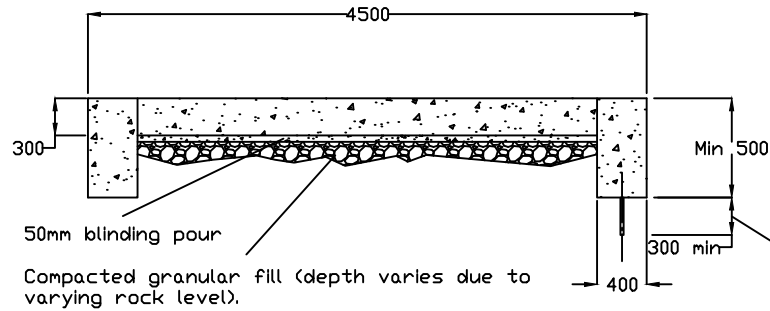
ELEVATION OF SLIPWAY - TWO GRADIENTS FROM Ch0 to Ch20 & Ch20 to Ch90  
ANGLES OF 8 Deg and 3 Deg

Chainage	Water Depth MHW (mm)	Water Depth Mid Tide (2.35m)	Water Depth MLWS
0	0	0	0
5	0	0	0
10	0	0	0
15	0	0	0
20	0	0	0
25	0	0	0
30	156	0	0
35	377	0	0
40	598	0	0
45	819	0	0
50	1040	0	0
55	1260	0	0
60	1480	0	0
65	1701	151	0
70	1922	372	0
75	2143	593	0
80	2364	814	0
85	2584	1034	0
90	2804	1254	0
95			
100			

	Chainage	Staff Reading	Ground Height (Relative to Ch 10)	Beach Height (Relative to top of wall)	Beach Height (Corrected for wall)	Approximate Angle (deg)	
Concrete	0	1350	100	0	0		
Concrete	5	1300	50	1150	1100	12.4	
Datum 0 Concrete	10	1250	0	1660	1560	5.3	
Concrete	15	1280	-30	2180	2050	5.6	
Concrete	20	1320	-70	2580	2410	4.1	
Concrete	25	1450	-200	2650	2350	0.7	positive
Rock	30	1560	-310	2800	2390	0.5	
Rock	35	1620	-370	3050	2580	2.2	
Sand	40	1700	-450	3000	2450	1.5	positive
Rock	45	1850	-600	3100	2400	0.6	positive
Rock	50	1950	-700	3380	2580	2.1	
Sand	55	2100	-850	3200	2250	3.8	positive
Sand	60	2180	-930	3650	2620	4.2	
Sand	65	2290	-1040	3750	2610	0.1	positive
Sand	70	2300	-1050	4120	2970	4.1	
Sand	75	2300	-1050	4250	3100	1.5	
Sand	80	2300	-1050	4400	3250	1.7	
Sand	85	2350	-1100	4450	3250	0	
Sand	90	2350	-1100	4640	3440	2.2	
Sand	95	2320	-1070	4650	3480	0.9	
Sand	100	2350	-1100	5100	3900	4.8	
							Ave. 2.23 Deg.

0	Draft Plan View - Option 1	SL	RS	12117
REV.	AMENDMENT DESCRIPTION	BY	CHKD.	DATE
This drawing to be read in conjunction with the following				
Drawings Nos.	AMS296.6/16; AMS296.7/16			
Rev Schedules Nos.				
Project Title/Address:				
BANFF HARBOUR SLIPWAY EXTENSION				
Client/Architect Name & Address:				
ABERDEENSHIRE COUNCIL				
Drawing Title:				
SLIPWAY ELEVATION DETAILS				
<b>Aberdeen Marine Services Ltd</b>				
Aberdeen Marine Services Ltd, 2 Glen Orchy Place, Kilmartock KA2 0LU				
DESIGNED BY	.	Issue Status:	Projection	
DATE	.	ISSUED		
DRAWN BY	S.LAURIE	Contract Drawing No.	Revision No.	
DATE	12/3/17	AMS296.5/16	0	
CHECKED BY	.			
DATE	.			

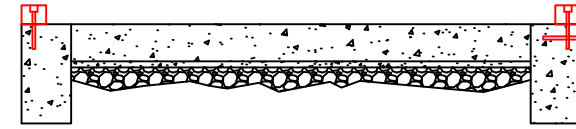
SECTION A-A (main slipway)



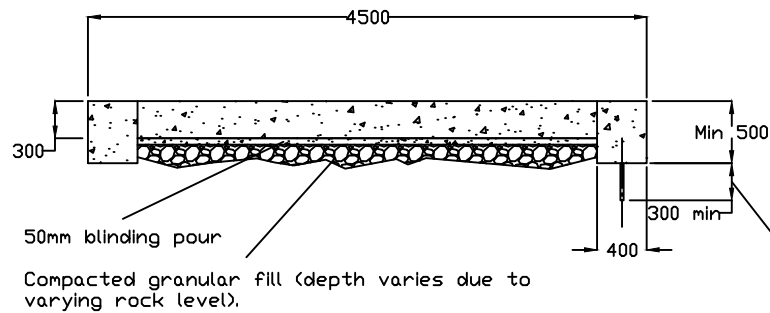
Height Varies Min 500 to 800 approx due to varying rock level  
Excavation of existing rock will be required  
Contractor to establish rock levels and submit detailed proposal for wall height  
Height at Ch 0 to Ch 25 anticipated as being maximum 800mm

300mm deep 25mm dia holes at 1m spacing  
Lockfix 'S25' to secure 20mm dia bar  
180 off in total

250mm wide x 150mm high x 6.0m Greenheart Edge Protection (60mm dia counter sunk holes)  
Secured using 300mm St/St 18mm Dia Coach bolts at 1.5m Centres  
90m timber length  
Mooring Rings to be installed on seaward side at 10m spacing



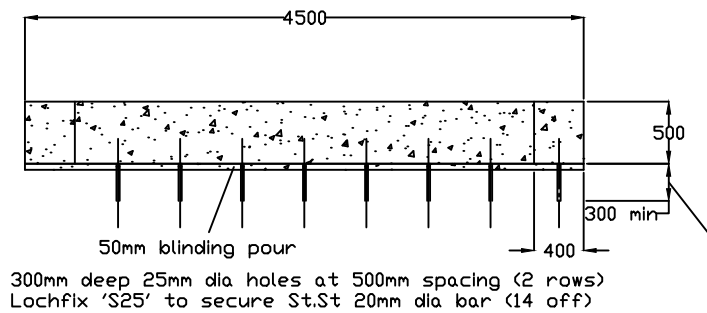
SECTION B-B



Height Varies Min 500 to 800 approx due to varying rock level  
Excavation of existing rock will be required  
Contractor to establish rock levels and submit detailed proposal for wall height  
Height at Ch 20 to Ch 90 anticipated as being maximum 500mm

300mm deep 25mm dia holes at 1m spacing  
Lockfix 'S25' to secure 20mm dia bar  
180 off in total

SECTION C-C (TOE)



Toe to be minimum 500mm thick  
Excavation of existing rock may be required  
Contractor to establish rock levels and submit detailed proposal for wall height  
Height at Ch 20 to Ch 90 anticipated as being maximum 500mm

300mm deep 25mm dia holes at 1m spacing  
Lockfix 'S25' to secure 20mm dia bar  
180 off in total

300mm deep 25mm dia holes at 500mm spacing (2 rows)  
Lochfix 'S25' to secure St.St 20mm dia bar (14 off)

Concrete toe cast onto bedrock (no granular fill)

REV.	AMENDMENT DESCRIPTION	BY.	CHKD.	DATE.
1	Removed Access Ramp	MS	CM	12.3.18
0	Construction Detail	SL	RS	12.3.17

This drawing to be read in conjunction with the following:

Drawings Nos.	AMS296.5/16
Bar Schedules Nos.	

Project Title/Address.  
**BANFF HARBOUR  
SLIPWAY EXTENSION**

Client Name & Address.  
**ABERDEENSHIRE  
COUNCIL**

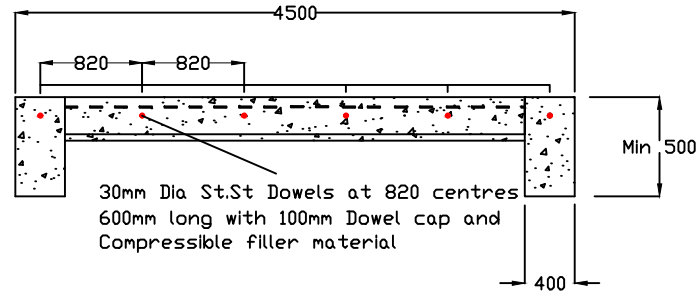
Drawing Title.  
**SLIPWAY CONSTRUCTION  
CROSS SECTION DETAILS**

**Aberdeen Marine Services Ltd**

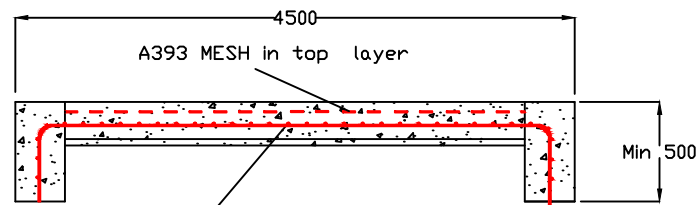
Aberdeen Marine Services Ltd,  
2 Glen Orchy Place,  
Kilmarnock,  
KA2 0LU

DESIGNED BY	.	Issue Status.	Projection.
DATE	.	ISSUED	
DRAWN BY	S.LAURIE	Contract Drawing No.	Revision No.
DATE	12/3/17	AMS296.6/16	1
CHECKED BY	.		
DATE	.		

SECTION A-A (main slipway)

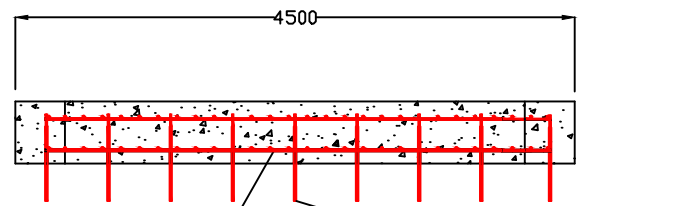


SECTION A-A (main slipway)

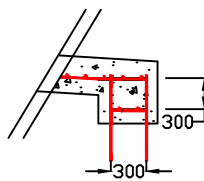


H16 Bars at 150mm centres in both directions

SECTION C-C (TOE)

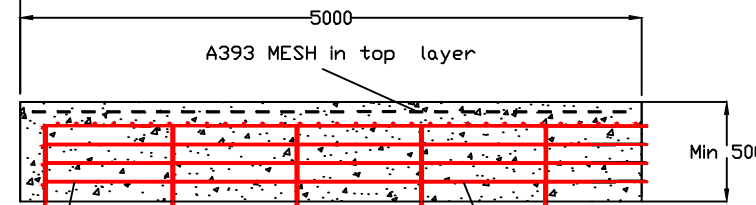


20 St./St Bars at 500mm centres  
H16 Bars at 150mm centres in both directions - 2 layers at Toe



Chainage 0 (Top of Slipway)

Side Elevation General Layout



H16 Bars to continue full length through construction joints  
20mm Stainless Bars at 1m centres  
H16 Bars at 150mm centres in both directions

NOTES

- Proposed Construction/Expansion Joints along Slipway at 5m intervals

REV.	AMENDMENT DESCRIPTION	BY.	CHKD.	DATE.
2	Ramp removed, clients comments added	SL	JF	14.3.18
1	Connection Detail Added	SL	JF	8.2.18
0	Construction Detail	SL	RS	12.3.17

This drawing to be read in conjunction with the following:

Drawings Nos.	AMS296.5/17
Bar Schedules Nos.	

Project Title/Address.

BANFF HARBOUR  
SLIPWAY EXTENSION

Client/Architect Name & Address.

ABERDEENSHIRE  
COUNCIL

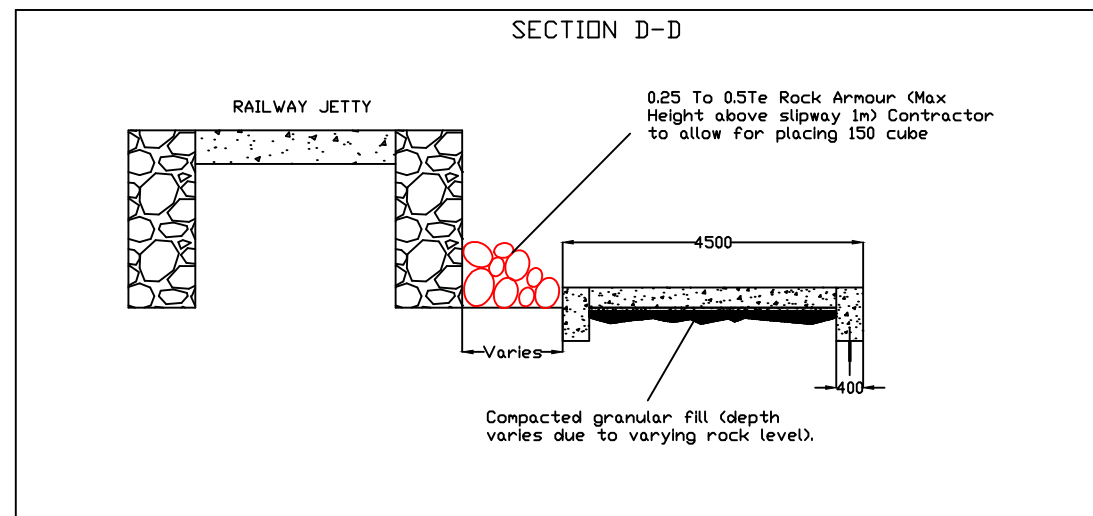
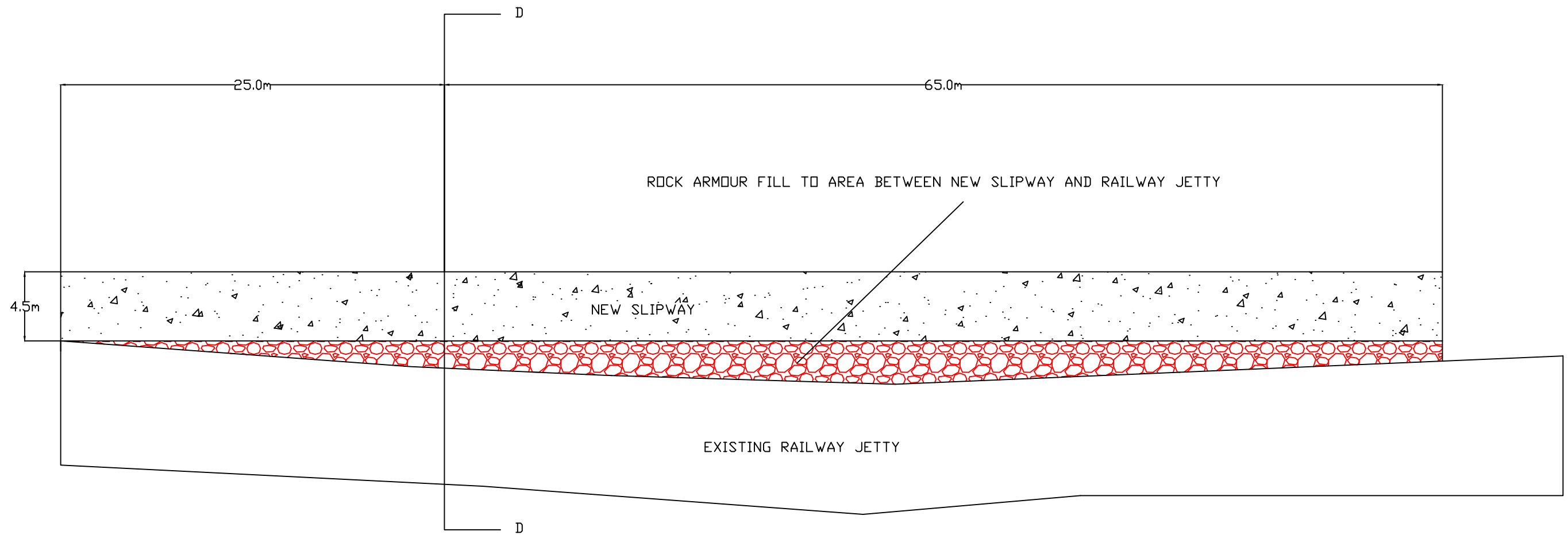
Drawing Title.

REINFORCEMENT DETAILS

**Aberdeen Marine Services Ltd**

Aberdeen Marine Services Ltd,  
2 Glen Orchy Place,  
Kilmarnock,  
KA2 0LU

DESIGNED BY	.	Issue Status.	Projection.
DATE	.	ISSUED	
DRAWN BY	S.LAURIE	Contract Drawing No.	Revision No.
DATE	12/3/17	AMS296.7/16	2
CHECKED BY	.		
DATE	.		



REV.	AMENDMENT DESCRIPTION	BY.	CHKD.	DATE.
1	Removed Access Ramp	MS	CM	12.3.18
0	Construction Detail	SL	RS	12.3.17

This drawing to be read in conjunction with the following:

Drawings Nos. \_\_\_\_\_  
 Bar Schedules Nos. \_\_\_\_\_

Project Title/Address.  
**BANFF HARBOUR  
 SLIPWAY EXTENSION**

Client/Architect Name & Address.  
**ABERDEENSHIRE  
 COUNCIL**

Drawing Title.  
**ROCK ARMOUR  
 DETAIL**

**Aberdeen Marine Services Ltd**

Aberdeen Marine Services Ltd,  
 2 Glen Orchy Place,  
 Kilmarnock,  
 KA2 0LU

DESIGNED BY	DATE	Issue Status	Projection
SLAURIE	12/3/17	ISSUED	
CHECKED BY		Contract Drawing No.	Revision No.
		AMS296.8/16	1