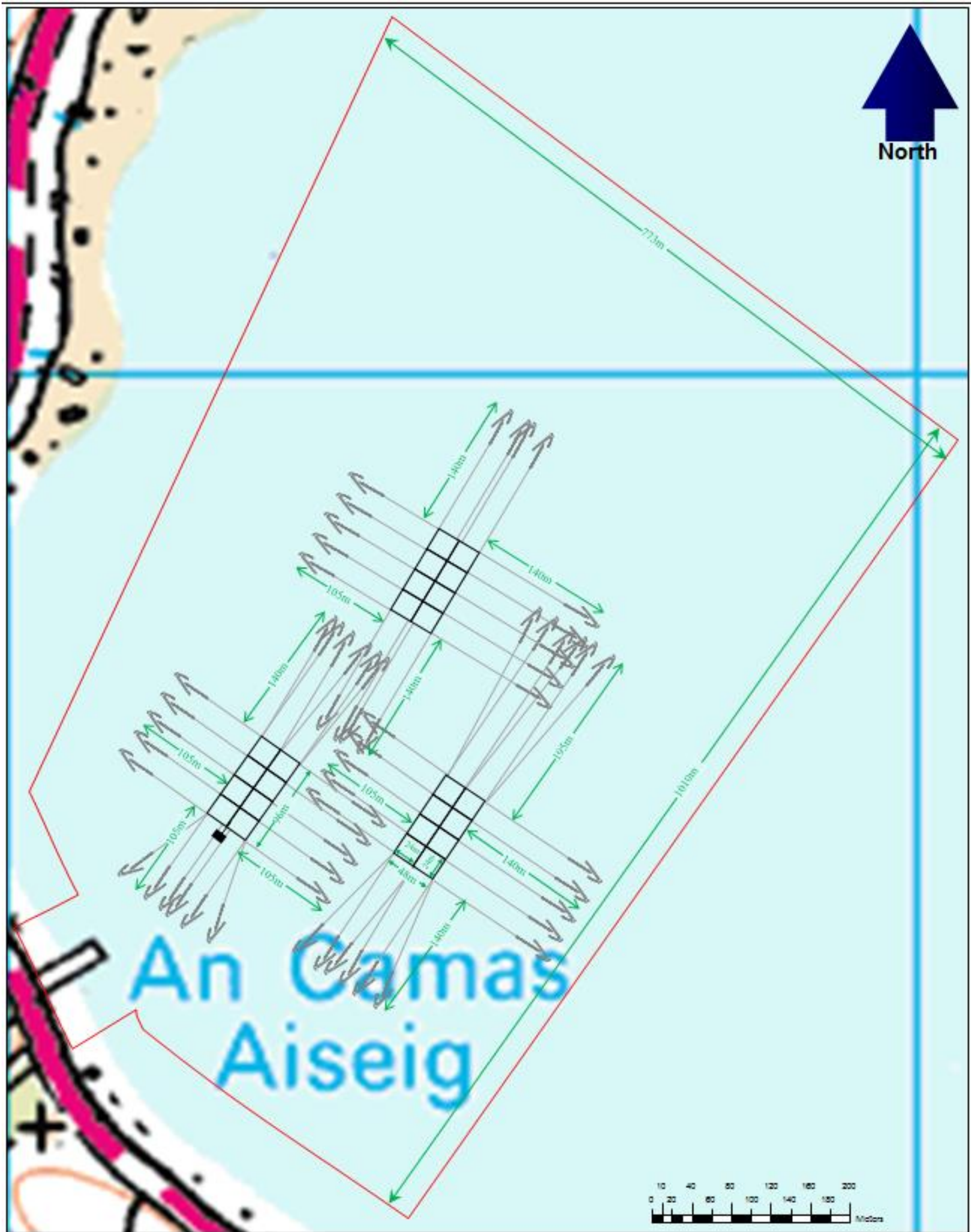




LINNHE:	ARDGOUR, LOCH LINNHE	Key:	Not to scale	01/12/2016	AN	CLH	0001	Final
GENERAL VIEW:	ORDNANCE SURVEY MAP		Scale	Date	Drawn	Checked	Revision No.	Status
Figure 1:	General view and location of Linnhe.							



<b>LINNHE:</b>	<b>ARDGOUR, LOCH LINNHE</b>	<b>Key:</b> <span style="color: red;">●</span> Centre Point Coordinate of the existing Planning Area 56.730743 N - 5.247999 W  <span style="color: blue;">●</span> Shorebase	<b>1:50,000</b>	<b>19/01/2017</b>	<b>CLH</b>	<b>CLH</b>	<b>0001</b>	<b>Final</b>
<b>LOCATION PLAN:</b>	<b>ORDNANCE SURVEY MAP</b>		Scale	Date	Drawn	Checked	Revision No.	Status
Figure 2:	General view of the existing farm							



<b>LINNHE SALMON FARM ARDGOUR, LOCH LINNHE</b>		<b>Key:</b>			
<b>Detailed Site Plan: Existing</b>		Existing Mooring Containment/Planning Area		Existing Moorings	
Figure 3: Detailed illustration of existing pens and moorings		Existing Pens		Existing Feed Selector System	
<b>1:4,000</b>	<b>06/05/2014</b>	<b>KS</b>	<b>AC</b>	<b>0001</b>	<b>Final</b>
Scale	Date	Drawn	Checked	Revision No.	Status

**Fish Farm Co-ordinates –**

**Existing Permission which we intend to continue with until 2019**

**Co-ordinates of site centre point:**

56° 43.845 N 005° 14.880 W E201402.487 N764611.507

**Pen Group Co-ordinates**

**West Cage Group**

N: 56° 43.828N 005° 14.990W E201288.862 N764586.083

E: 56° 43.813N 005° 14.950W E201328.310 N764556.337

S: 56° 43.784N 005° 15.044W E201269.401 N764477.375

W: 56° 43.784N 005° 15.044W E201229.953 N764507.121

**East Cage Group**

N: 56° 43.806N 005° 14.790W E201491.157 N764536.324

E: 56° 43.792N 005° 14.751W E201529.530 N764506.865

S: 56° 43.748N 005° 14.808W E201467.005 N764429.510

W: 56° 43.764N 005° 14.849W E201427.440 N764460.587

**North Cage Group**

N: 56° 43.944N 005° 14.800W E201492.706 N764791.973

E: 56° 43.929N 005° 14.760W E201532.148 N764762.229

S: 56° 43.885N 005° 14.815W E201472.236 N764683.301

W: 56° 43.900N 005° 14.856W E201431.761 N764713.095

**Co-ordinates of planning and mooring boundary:**

56° 44.238 N 005° 14.854 W E201462.993 N765338.922

56° 43.993 N 005° 14.236 W E202071.992 N764855.405

56° 43.553 N 005° 14.835 W E201423.126 N764068.667

56° 43.662 N 005° 15.129 W E201132.120 N764285.847

56° 43.796 N 005° 15.250 W E201021.430 N764539.852

**Co-ordinates of feed pipe corridor boundary:**

56° 43.738 N 005° 15.199 W E201067.659 N764429.348

56° 43.673 N 005° 15.142 W E201120.754 N764305.898

56° 43.653 N 005° 15.200 W E201059.193 N764272.253

56° 43.720 N 005° 15.267 W E200997.032 N764399.265

**Feed selector raft co-ordinates (Located at the South end of the West cage group):**

56° 43.777 N 005° 15.025 W E201248.462 N764493.833

**Co-ordinates of boat mooring x 7:**

56° 43.868 N 005° 15.112 W	E201168.489 N764666.880
56° 43.851 N 005° 15.193 W	E201083.917 N764638.565
56° 43.804 N 005° 15.179 W	E201093.734 N764551.133
56° 43.785 N 005° 15.185 W	E201086.539 N764515.796
56° 43.681 N 005° 15.116 W	E201147.106 N764320.033
56° 43.654 N 005° 15.088 W	E201174.082 N764268.579
56° 43.645 N 005° 15.018 W	E201244.175 N 764247.411