

Contains OS data © Crown copyright and database right (2022). © EMOdnet 2022, reproduced under the CC-BY-SA 4.0 license. Contains public sector information licensed under the Open Government Licence v3.0. © EMOdnet 2022, reproduced under the CC-BY-SA 4.0 license.

Project Name
BERWICK BANK WIND FARM

Drawing Title
**Figure 15.44a
Viewpoint A: Dunnottar Castle**

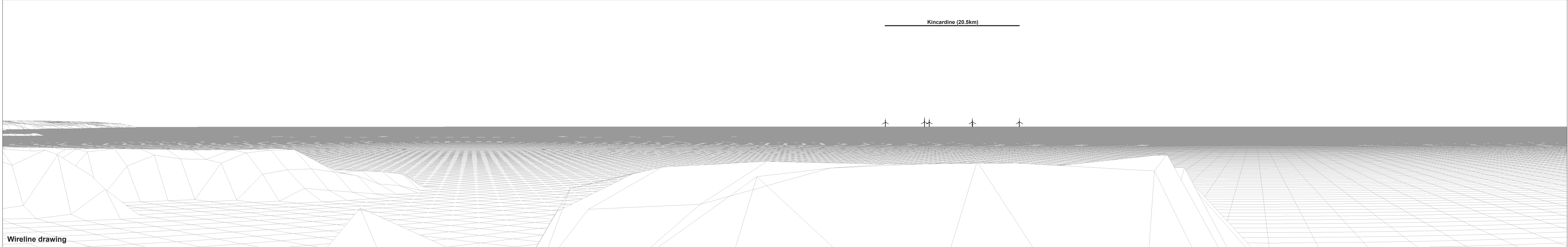
Rev	Date	Details	Status	Drwn	Rqst	Chkd	Appd
R1	26/01/2022	First Issue	-	SH	-	SM	-
R2	27/07/2022	Second Issue	-	SH	-	SM	-
R3	29/09/2022	Third Issue	-	SH	-	SM	-
R4	-	-	-	-	-	-	-

Drawing Number

Scale	1:600,000	Plot Size	Extended A3	Datum	WGS84	Projection	UTM30N
-------	-----------	-----------	-------------	-------	-------	------------	--------

PART OF SLR

- Legend**
- Proposed Development Turbines (Indicative)
 - ▭ Proposed Array Area and Export Cable Corridor
 - 10km Radii
 - ⋯ 60km SLVIA Study Area
 - ▭ Local Authority
 - Cumulative Wind Farm Status
 - Operational
 - Under Construction
 - Consented
 - Screening
 - Scoping
 - Viewpoint
 - Wireline Only (90°HFOV)
 - No. of Blade Tips Theoretically Visible
 - 1 - 30
 - 31 - 60
 - 61 - 90
 - 91 - 120
 - 121 - 150
 - 151 - 179

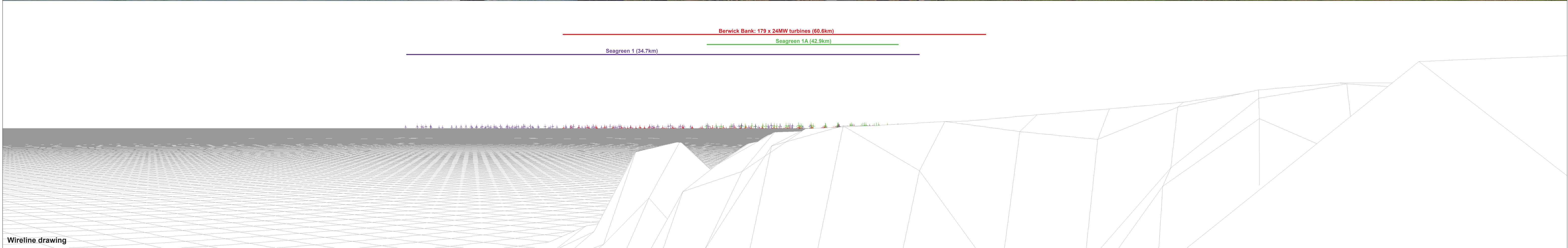


<p>OS reference: 387941 E 783806 N</p> <p>Eye level: 50.45 mAOB</p> <p>Direction of view: 63°</p> <p>Dist. to Array Area: 60.56km</p>	<p>Horizontal field of view: 90° (cylindrical projection)</p> <p>Principal distance: 522 mm</p> <p>Paper size: 841 x 297 mm (half A1)</p> <p>Correct printed image size: 820 x 130 mm</p>	<p>Camera: Canon EOS 6D</p> <p>Lens: Canon EF 50mm f/1.4</p> <p>Camera height: 1.5 m</p> <p>Date and time: 16/11/2021 16:02</p>	<p>↑ Proposed Development Turbines</p> <p>↑ Operational Turbines</p> <p>↑ Under Construction Turbines</p> <p>↑ Consented Turbines</p>	<p>Figure: 15.44b</p> <p>Viewpoint A: Dunnottar Castle</p> <p>Berwick Bank Wind Farm</p> <p><small>© Crown copyright. All rights reserved (2021). Licence number 0100031673</small></p>
---	---	---	---	--



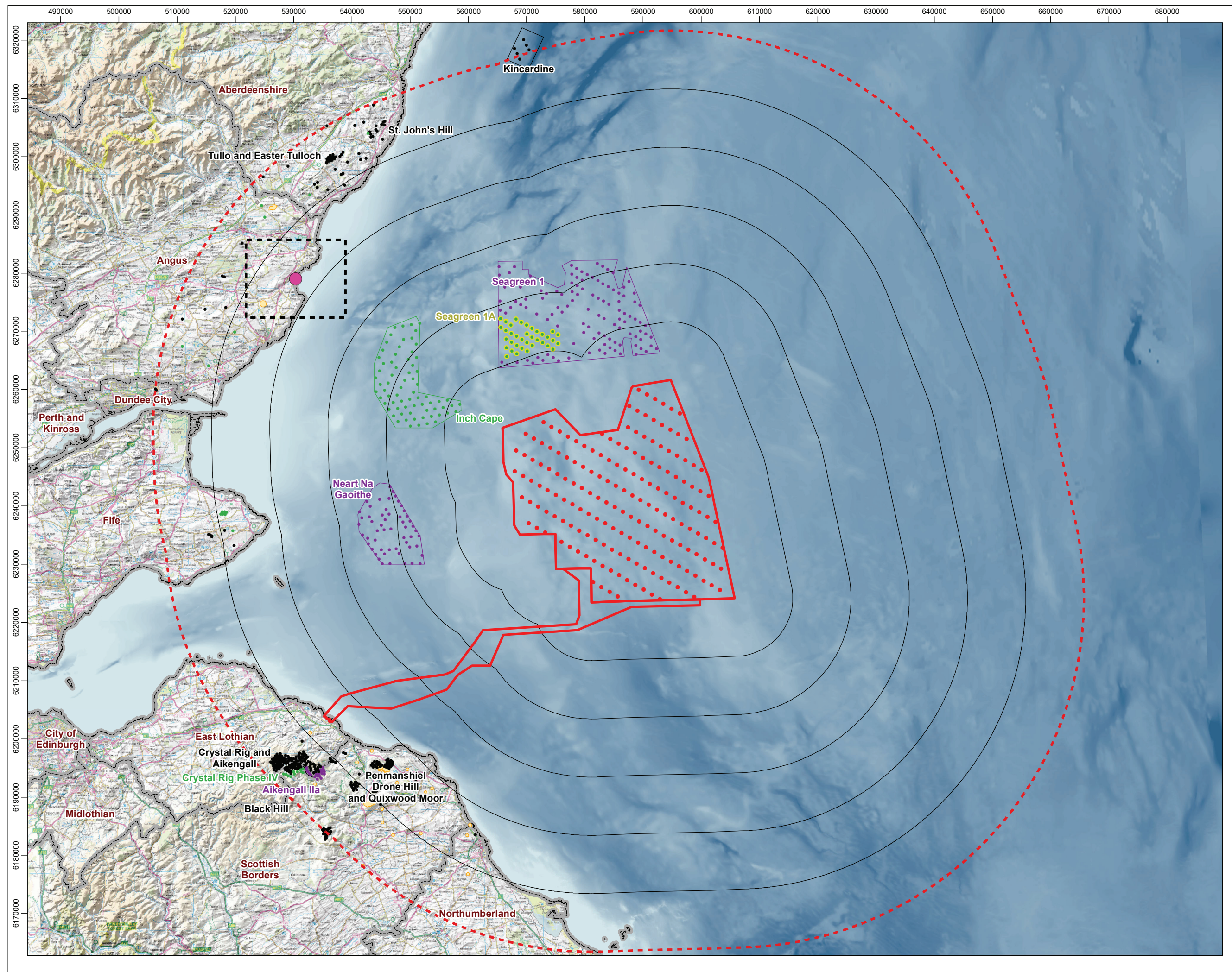
Baseline photograph

This image provides landscape and visual context only

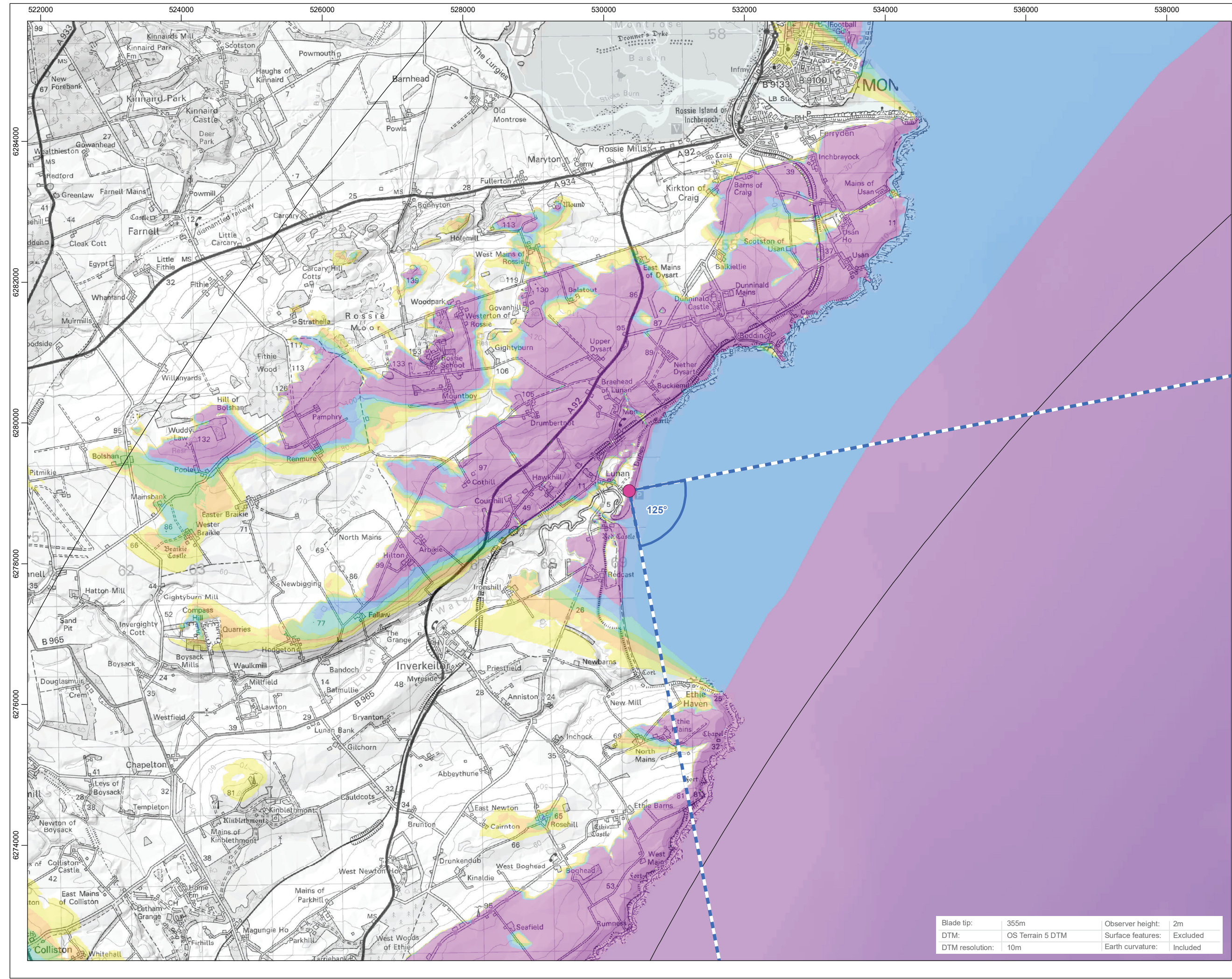


Wireline drawing

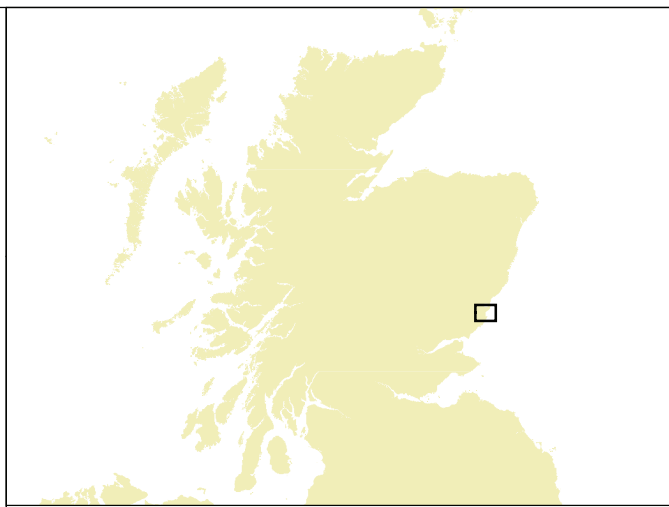
<p>OS reference: 387941 E 783806 N Eye level: 50.45 mAOD Direction of view: 153° Dist. to Array Area: 60.56km</p>	<p>Horizontal field of view: 90° (cylindrical projection) Principal distance: 522 mm Paper size: 841 x 297 mm (half A1) Correct printed image size: 820 x 130 mm</p>	<p>Camera: Canon EOS 6D Lens: Canon EF 50mm f/1.4 Camera height: 1.5 m Date and time: 16/11/2021 16:02</p>	<ul style="list-style-type: none"> ↑ Proposed Development Turbines ↑ Operational Turbines ↑ Under Construction Turbines ↑ Consented Turbines 	<p>Note: Under construction Seagreen 1 and Neart Na Gaoithe wind farms have been added (photomontaged) in to the baseline panorama.</p>	<p>Figure: 15.44c Viewpoint A: Dunnottar Castle Berwick Bank Wind Farm <small>© Crown copyright, All rights reserved (2021). Licence number 0100031673</small></p>
--	---	---	--	--	--



Scale: 1:620,000



Scale: 1:50,000



Legend

- Proposed Development Turbines (Indicative)
- Proposed Array Area and Export Cable Corridor
- 10km Radii
- 60km SLVIA Study Area
- Local Authority

Cumulative Wind Farm Status

- Operational
- Under Construction
- Consented
- Screening
- Scoping
- Viewpoint
- Wireline Only (90°HFOV)

No. of Blade Tips Theoretically Visible

- 1 - 30
- 31 - 60
- 61 - 90
- 91 - 120
- 121 - 150
- 151 - 179

Contains OS data © Crown copyright and database right (2022). © EMOData 2022, reproduced under the CC-BY-SA 4.0 license. Contains public sector information licensed under the Open Government Licence v3.0. © EMOData 2022, reproduced under the CC-BY-SA 4.0 license.

Project Name
BERWICK BANK WIND FARM

Drawing Title
Figure 15.45a
Viewpoint B: Lunan Bay

Rev	Date	Details	Status	Drwn	Rqst	Chkd	Appd
R1	26/01/2022	First Issue	-	SH	-	SM	-
R2	27/07/2022	Second Issue	-	SH	-	SM	-
R3	29/09/2022	Third Issue	-	SH	-	SM	-
R4	-	-	-	-	-	-	-

Drawing Number

Scale: 1:600,000 | Plot Size: Extended A3 | Datum: WGS84 | Projection: UTM30N

open optimised environments
 PART OF SLR

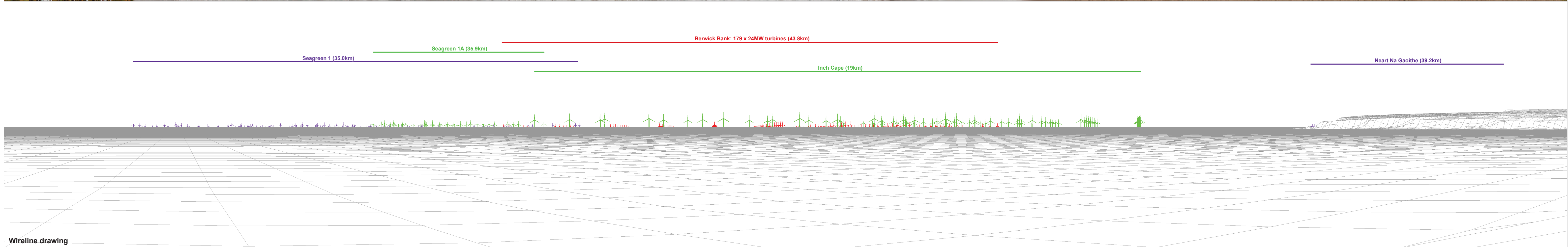
sse Renewables

Blade tip:	355m	Observer height:	2m
DTM:	OS Terrain 5 DTM	Surface features:	Excluded
DTM resolution:	10m	Earth curvature:	Included



Baseline photograph

This image provides landscape and visual context only



Wireline drawing

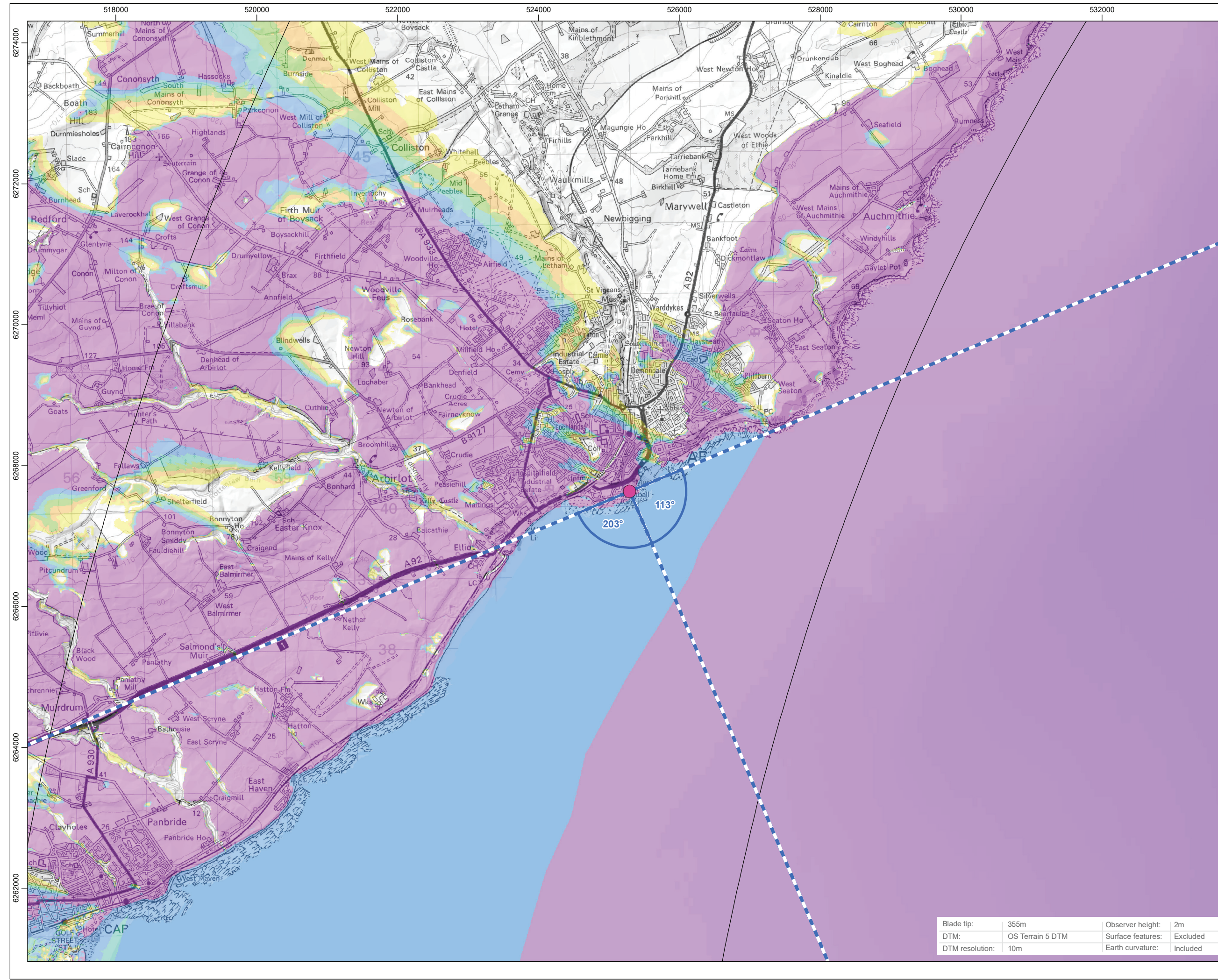
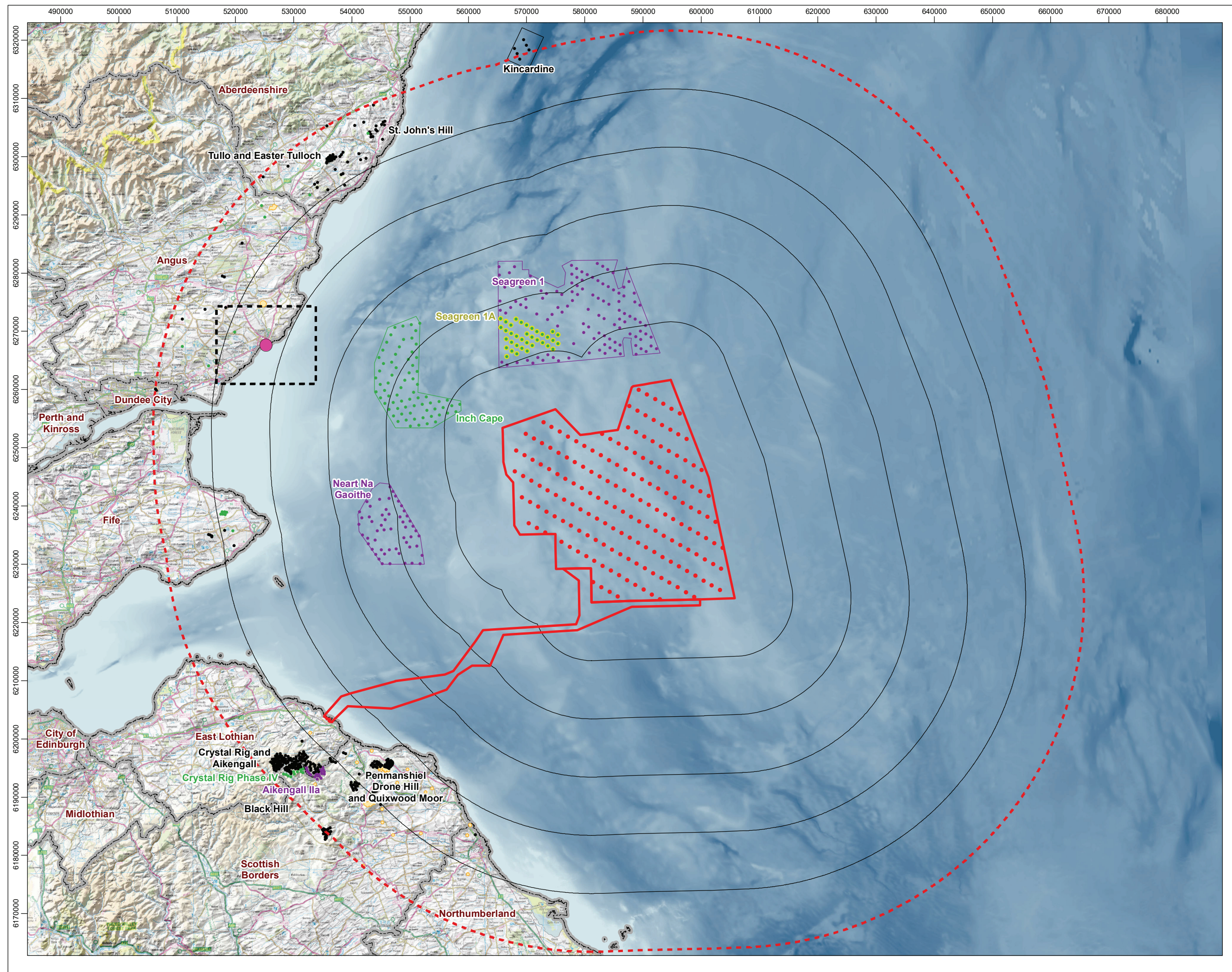
OS reference: 369156 E 751526 N
 Eye level: 11.54 mAOD
 Direction of view: 125°
 Dist. to Array Area: 43.79km

Horizontal field of view: 90° (cylindrical projection)
 Principal distance: 522 mm
 Paper size: 841 x 297 mm (half A1)
 Correct printed image size: 820 x 130 mm

Camera: Canon EOS 6D
 Lens: Canon EF 50mm f/1.4
 Camera height: 1.5 m
 Date and time: 16/11/2021 12:58

- ↑ Proposed Development Turbines
- ↑ Operational Turbines
- ↑ Under Construction Turbines
- ↑ Consented Turbines

Note: Under construction Seagreen 1 and Neart Na Gaoithe wind farms have been added (photomontaged) in to the baseline panorama.



Legend

- Proposed Development Turbines (Indicative)
- Proposed Array Area and Export Cable Corridor
- 10km Radii
- 60km SLVIA Study Area
- Local Authority

Cumulative Wind Farm Status

- Operational
- Under Construction
- Consented
- Screening
- Scoping
- Viewpoint

Wireline Only (90°HFOV)

No. of Blade Tips Theoretically Visible

- 1 - 30
- 31 - 60
- 61 - 90
- 91 - 120
- 121 - 150
- 151 - 179

Contains OS data © Crown copyright and database right (2022). © EMOdnet 2022, reproduced under the CC-BY-SA 4.0 license. Contains public sector information licensed under the Open Government Licence v3.0. © EMOdnet 2022, reproduced under the CC-BY-SA 4.0 license.

Project Name
BERWICK BANK WIND FARM

Drawing Title
**Figure 15.46a
Viewpoint C: Arbroath**

Rev	Date	Details	Status	Drwn	Rqst	Chkd	Appd
R1	26/01/2022	First Issue	-	SH	-	SM	-
R2	27/07/2022	Second Issue	-	SH	-	SM	-
R3	29/09/2022	Third Issue	-	SH	-	SM	-
R4	-	-	-	-	-	-	-

Drawing Number

Scale	1:600,000	Plot Size	Extended A3	Datum	WGS84	Projection	UTM30N
-------	-----------	-----------	-------------	-------	-------	------------	--------

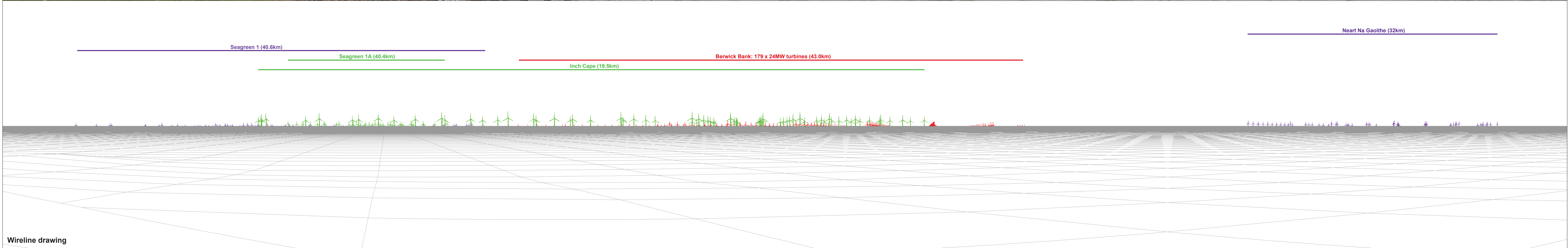
open
optimised environments
PART OF SLR

sse
Renewables



Baseline photograph

This image provides landscape and visual context only



Wireline drawing

OS reference: 363921 E 740199 N
 Eye level: 7.34 mAOD
 Direction of view: 113°
 Dist. to Array Area: 43.01km

Horizontal field of view: 90° (cylindrical projection)
 Principal distance: 522 mm
 Paper size: 841 x 297 mm (half A1)
 Correct printed image size: 820 x 130 mm

Camera: Canon EOS 6D
 Lens: Canon EF 50mm f/1.4
 Camera height: 1.5 m
 Date and time: 16/11/2021 12:15

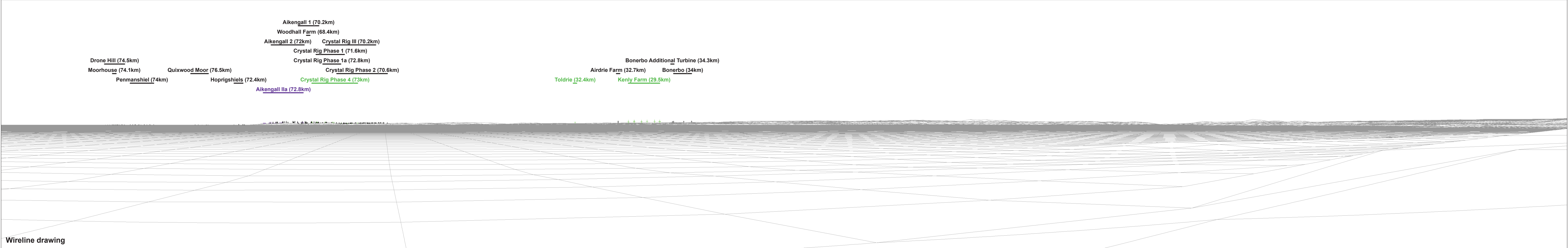
- ↑ Proposed Development Turbines
- ↑ Operational Turbines
- ↑ Under Construction Turbines
- ↑ Consented Turbines

Note: Under construction Seagreen 1 and Neart Na Gaoithe wind farms have been added (photomontaged) in to the baseline panorama.

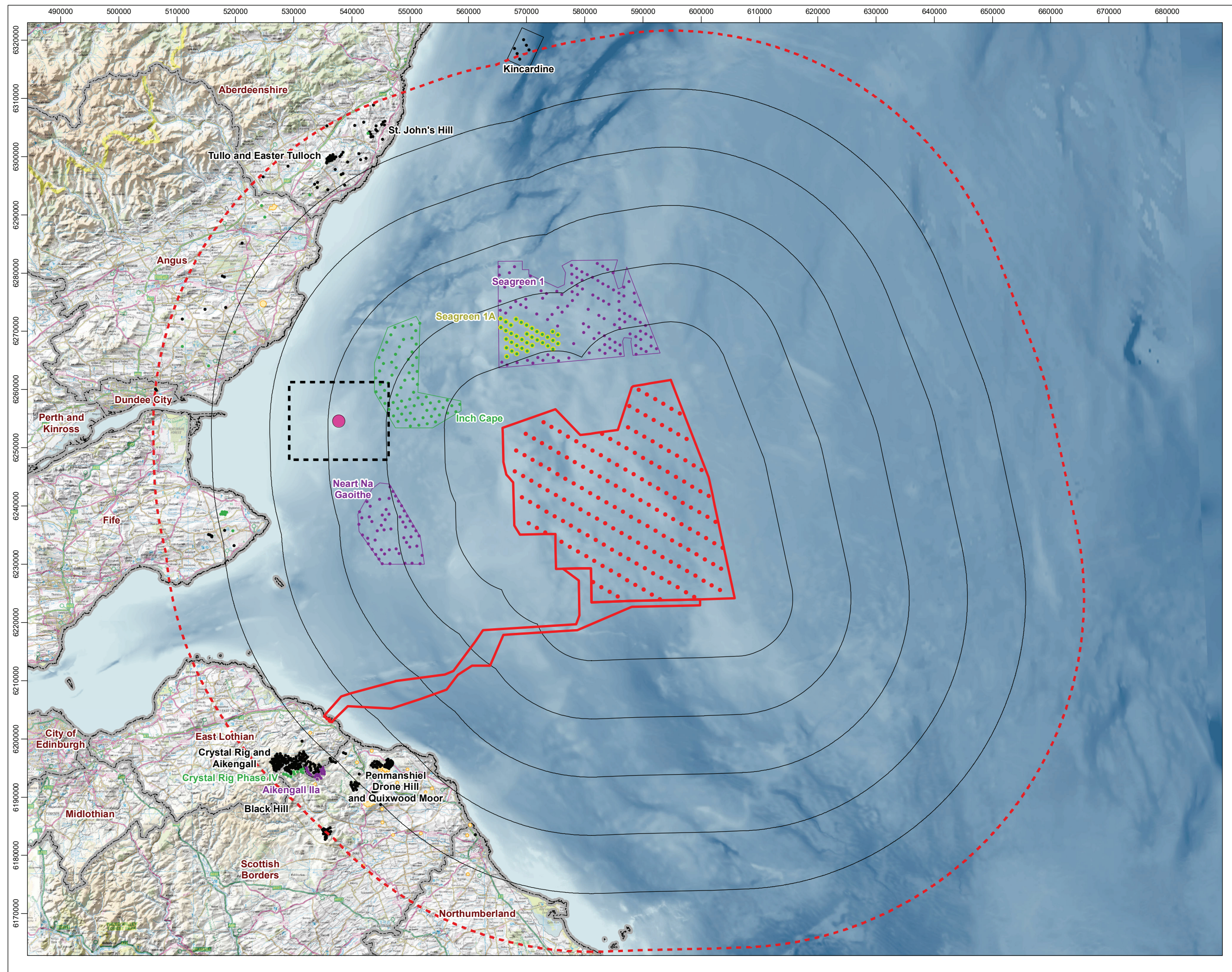


Baseline photograph

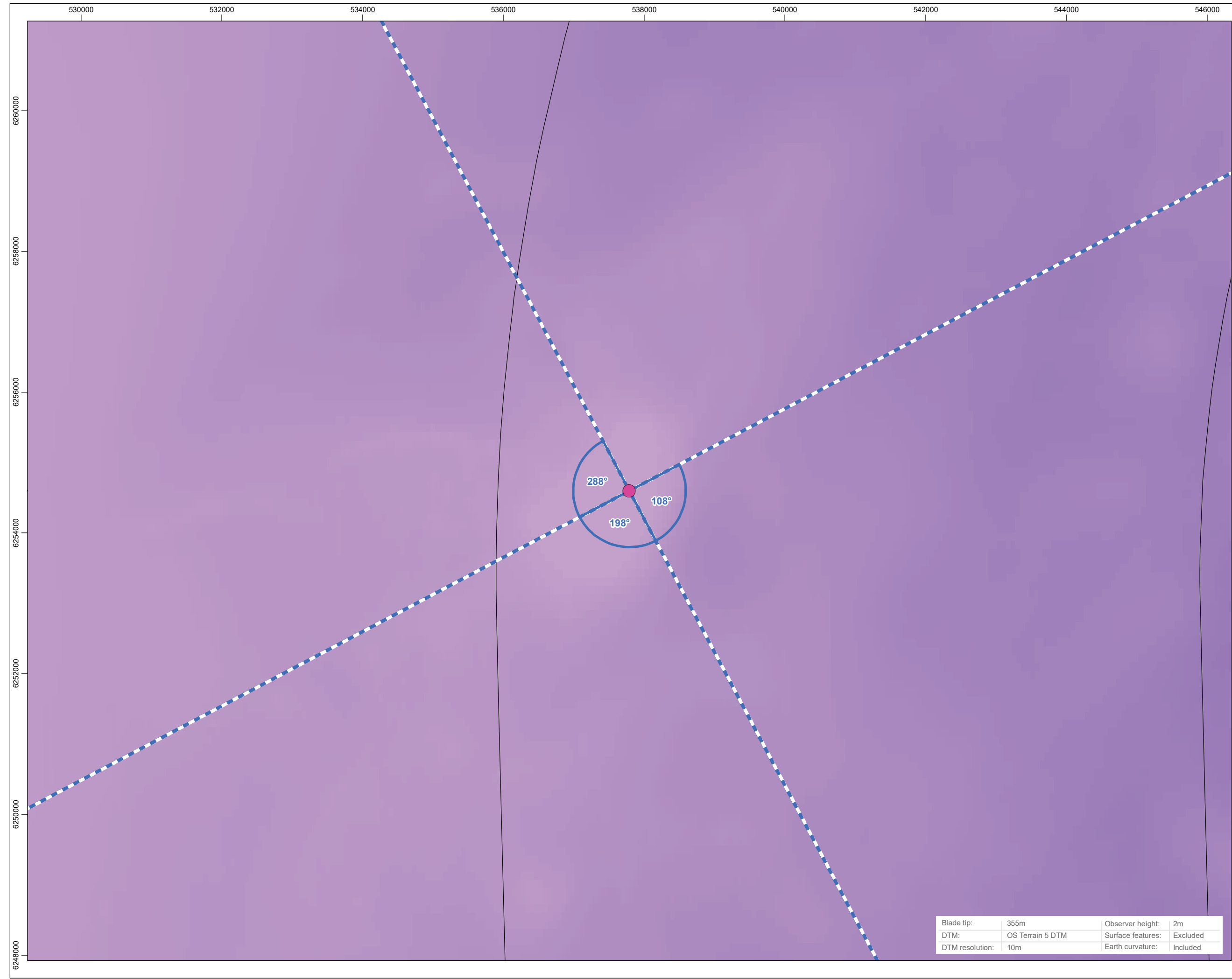
This image provides landscape and visual context only



Wireline drawing



Scale: 1:620,000



Scale: 1:50,000

Legend

- Proposed Development Turbines (Indicative)
- ▭ Proposed Array Area and Export Cable Corridor
- 10km Radii
- ⋯ 60km SLVIA Study Area
- ▭ Local Authority

Cumulative Wind Farm Status

- Operational
- Under Construction
- Consented
- Screening
- Scoping
- Viewpoint
- ▭ Wireline Only (90°HFOV)

No. of Blade Tips Theoretically Visible

- 151 - 179

N

Contains OS data © Crown copyright and database right (2022). © EMOdnet 2022, reproduced under the CC-BY-SA 4.0 licence. Contains public sector information licensed under the Open Government Licence v3.0. © EMOdnet 2022, reproduced under the CC-BY-SA 4.0 licence.

Project Name
BERWICK BANK WIND FARM

Drawing Title
Figure 15.47a
Viewpoint D: Bell Rock Lighthouse

Rev	Date	Details	Status	Drwn	Rqst	Chkd	Appd
R1	26/01/2022	First Issue	-	SH	-	SM	-
R2	27/07/2022	Second Issue	-	SH	-	SM	-
R3	29/09/2022	Third Issue	-	SH	-	SM	-
R4	-	-	-	-	-	-	-

Drawing Number

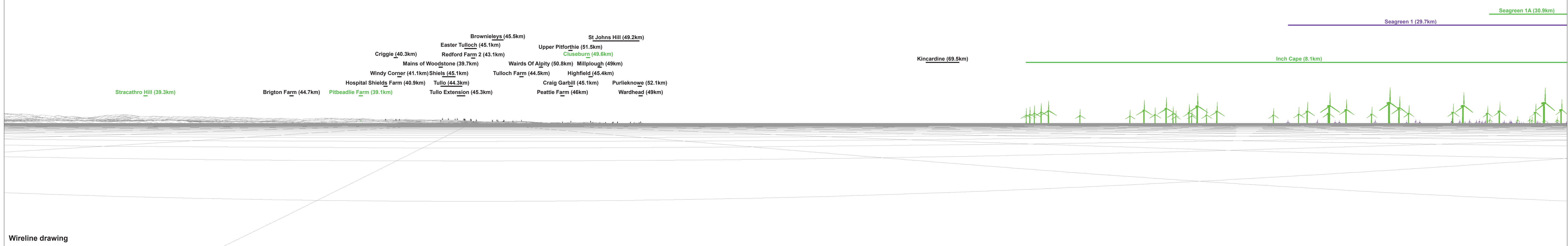
Scale	1:600,000	Plot Size	Extended A3	Datum	WGS84	Projection	UTM30N
-------	-----------	-----------	-------------	-------	-------	------------	--------

Blade tip:	355m	Observer height:	2m
DTM:	OS Terrain 5 DTM	Surface features:	Excluded
DTM resolution:	10m	Earth curvature:	Included

NO PHOTOGRAPH AVAILABLE

Baseline photograph

This image provides landscape and visual context only



Wireline drawing

OS reference: 376223 E 726981 N
 Eye level: 1.5 mAOD
 Direction of view: 18°
 Dist. to Array Area: 28.13km

Horizontal field of view: 90° (cylindrical projection)
 Principal distance: 522 mm
 Paper size: 841 x 297 mm (half A1)
 Correct printed image size: 820 x 130 mm

Camera: Canon EOS 6D
 Lens: Canon EF 50mm f/1.4
 Camera height: 1.5 m

- ↑ Proposed Development Turbines
- ↑ Operational Turbines
- ↑ Under Construction Turbines
- ↑ Consented Turbines

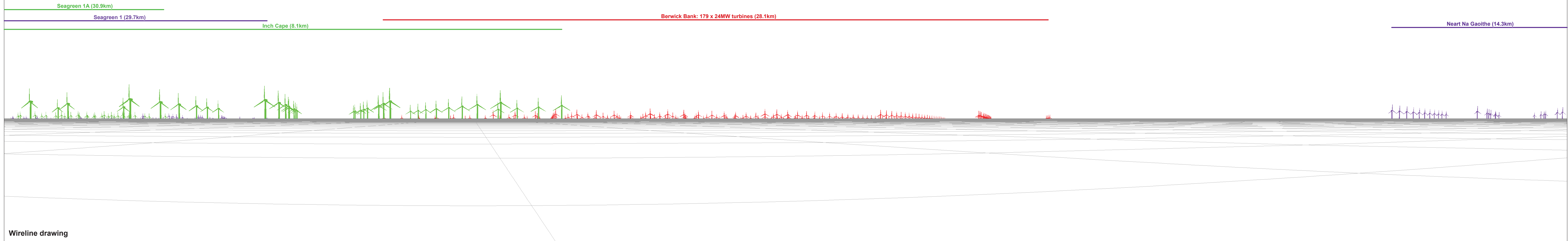
Figure: 15.47b
 Viewpoint D: Bell Rock Lighthouse
 Berwick Bank Wind Farm

© Crown copyright. All rights reserved (2021). Licence number 0100031673

NO PHOTOGRAPH AVAILABLE

Baseline photograph

This image provides landscape and visual context only



Wireline drawing

OS reference: 376223 E 726981 N
Eye level: 1.5 mAOD
Direction of view: 108°
Dist. to Array Area: 28.13km

Horizontal field of view: 90° (cylindrical projection)
Principal distance: 522 mm
Paper size: 841 x 297 mm (half A1)
Correct printed image size: 820 x 130 mm

Camera: Canon EOS 6D
Lens: Canon EF 50mm f/1.4
Camera height: 1.5 m
Date and time:

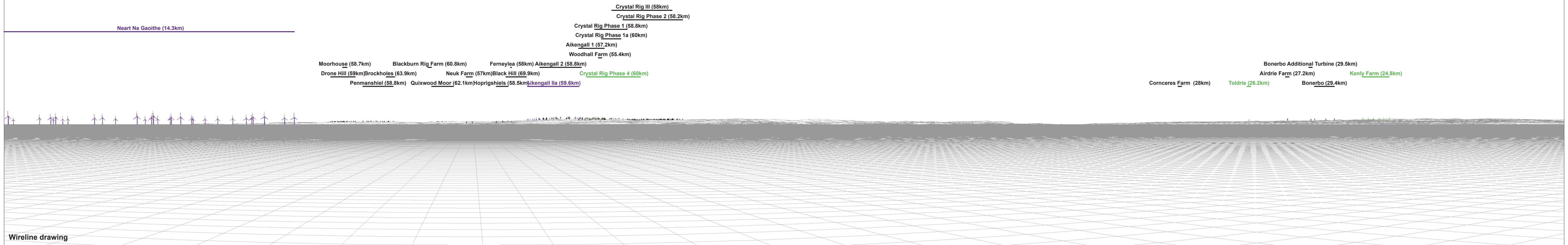
- ↑ Proposed Development Turbines
- ↑ Operational Turbines
- ↑ Under Construction Turbines
- ↑ Consented Turbines

Figure: 15.47c
Viewpoint D: Bell Rock Lighthouse
Berwick Bank Wind Farm
© Crown copyright. All rights reserved (2021). Licence number 0100031673

NO PHOTOGRAPH AVAILABLE

Baseline photograph

This image provides landscape and visual context only



Wireline drawing

OS reference: 376223 E 726981 N
 Eye level: 1.5 mAOD
 Direction of view: 198°
 Dist. to Array Area: 28.13km

Horizontal field of view: 90° (cylindrical projection)
 Principal distance: 522 mm
 Paper size: 841 x 297 mm (half A1)
 Correct printed image size: 820 x 130 mm

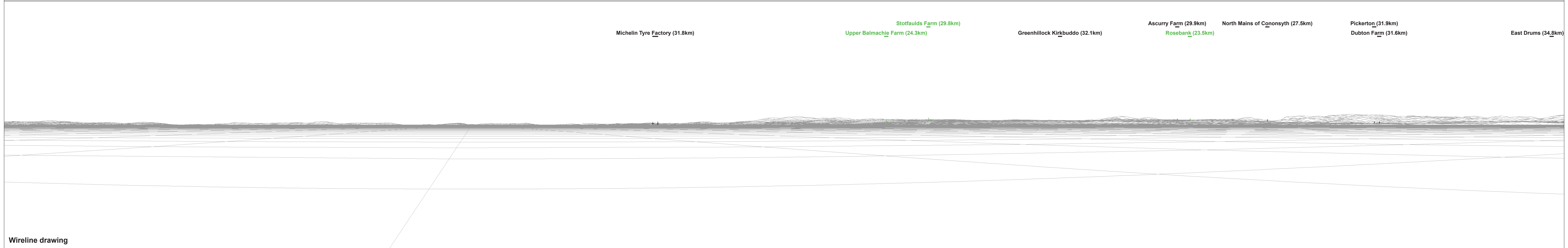
Camera: Canon EOS 6D
 Lens: Canon EF 50mm f/1.4
 Camera height: 1.5 m

- ↑ Proposed Development Turbines
- ↑ Operational Turbines
- ↑ Under Construction Turbines
- ↑ Consented Turbines

NO PHOTOGRAPH AVAILABLE

Baseline photograph

This image provides landscape and visual context only



Wireline drawing

OS reference: 376223 E 726981 N
Eye level: 1.5 mAOD
Direction of view: 288°
Dist. to Array Area: 28.13km

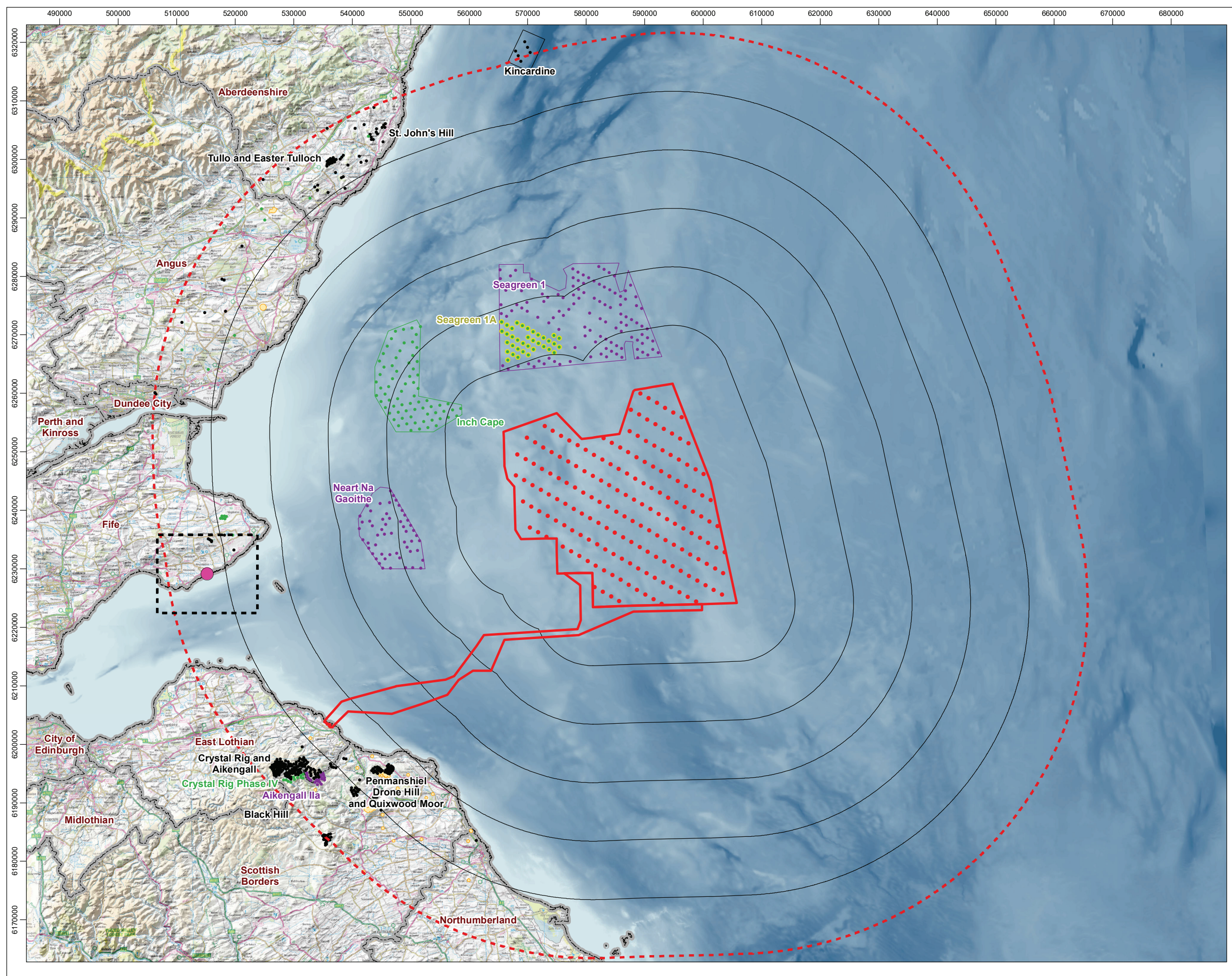
Horizontal field of view: 90° (cylindrical projection)
Principal distance: 522 mm
Paper size: 841 x 297 mm (half A1)
Correct printed image size: 820 x 130 mm

Camera: Canon EOS 6D
Lens: Canon EF 50mm f/1.4
Camera height: 1.5 m

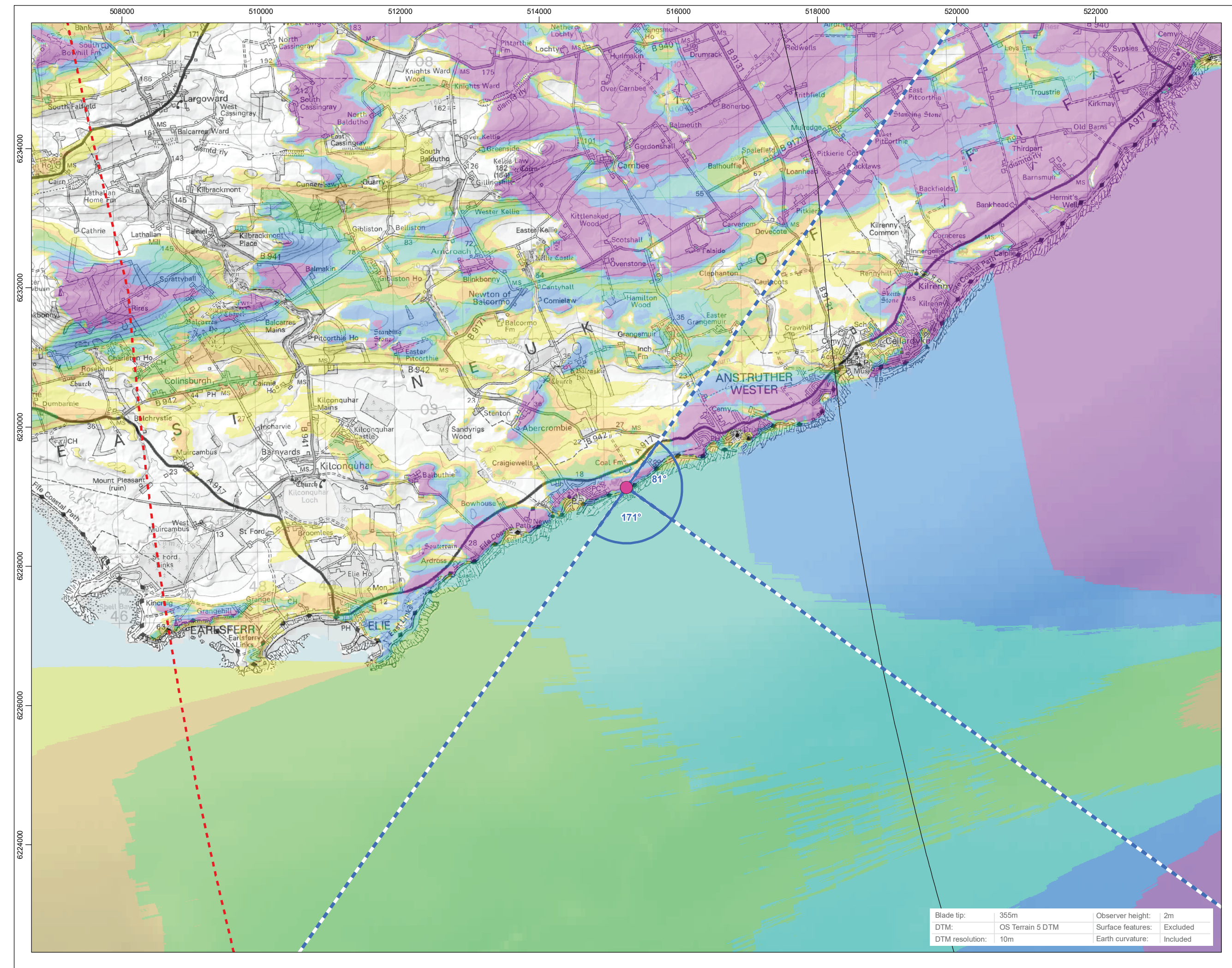
↑ Proposed Development Turbines
↑ Operational Turbines
↑ Under Construction Turbines
↑ Consented Turbines

Figure: 15.47e
Viewpoint D: Bell Rock Lighthouse
Berwick Bank Wind Farm

© Crown copyright. All rights reserved (2021). Licence number 0100031673



Scale: 1:620,000



Scale: 1:50,000

Legend

- Proposed Development Turbines (Indicative)
- Proposed Array Area and Export Cable Corridor
- 10km Radii
- 60km SLVIA Study Area
- Local Authority

Cumulative Wind Farm Status

- Operational
- Under Construction
- Consented
- Screening
- Scoping
- Viewpoint
- Wireline Only (90°HFOV)

No. of Blade Tips Theoretically Visible

- 1 - 30
- 31 - 60
- 61 - 90
- 91 - 120
- 121 - 150
- 151 - 179

N

Contains OS data © Crown copyright and database right (2022). © EMODnet 2022, reproduced under the CC-BY-SA 4.0 licence. Contains public sector information licensed under the Open Government Licence v3.0. © EMODnet 2022, reproduced under the CC-BY-SA 4.0 licence.

Project Name
BERWICK BANK WIND FARM

Drawing Title
Figure 15.48a
Viewpoint E: St Monan's

Rev	Date	Details	Status	Drwn	Rqst	Chkd	Appd
R1	26/01/2022	First Issue	-	SH	-	SM	-
R2	27/07/2022	Second Issue	-	SH	-	SM	-
R3	29/09/2022	Third Issue	-	SH	-	SM	-
R4	-	-	-	-	-	-	-

Drawing Number

Scale	Plot Size	Datum	Projection
1:600,000	Extended A3	WGS84	UTM30N

open
optimised environments
PART OF SLR

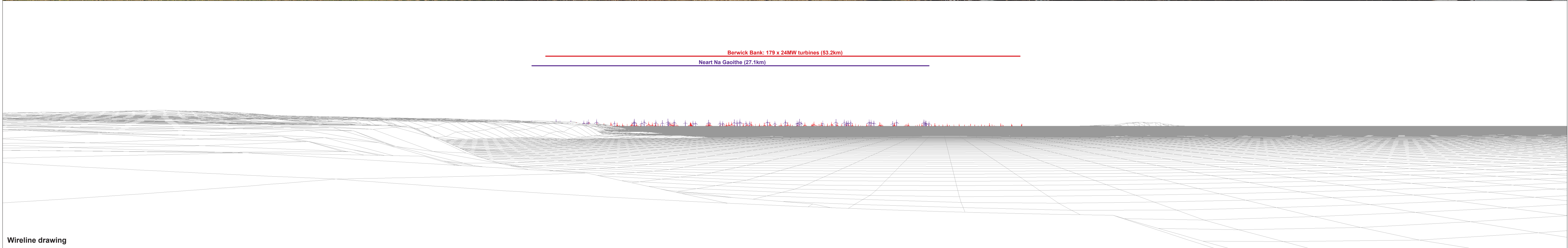
sse
Renewables

Blade tip:	355m	Observer height:	2m
DTM:	OS Terrain 5 DTM	Surface features:	Excluded
DTM resolution:	10m	Earth curvature:	Included



Baseline photograph

This image provides landscape and visual context only



Wireline drawing

<p>OS reference: 353317 E 701844 N Eye level: 16.26 mAOD Direction of view: 81° Dist. to Array Area: 53.18km</p>	<p>Horizontal field of view: 90° (cylindrical projection) Principal distance: 522 mm Paper size: 841 x 297 mm (half A1) Correct printed image size: 820 x 130 mm</p>	<p>Camera: Canon EOS 6D Lens: Canon EF 50mm f/1.4 Camera height: 1.5 m Date and time: 11/11/2021 12:21</p>	<p>↑ Proposed Development Turbines ↑ Operational Turbines ↑ Under Construction Turbines ↑ Consented Turbines</p>	<p>Note: Under construction Seagreen 1 and Neart Na Gaoithe wind farms have been added (photomontaged) in to the baseline panorama.</p>	<p>Figure: 15.48b Viewpoint E: St Monan's Berwick Bank Wind Farm <small>© Crown copyright, All rights reserved (2021). Licence number 0100031673</small></p>
---	---	---	---	--	--

