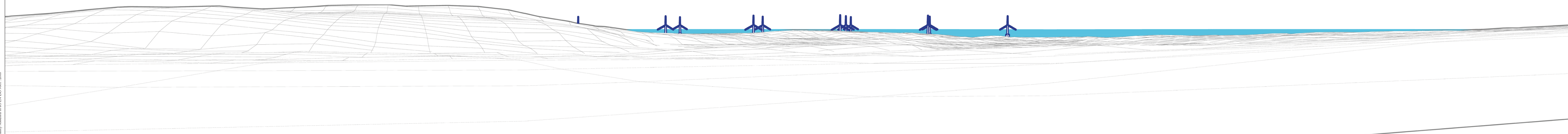
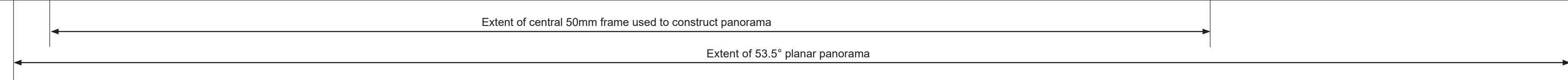




Baseline photograph

This image provides landscape and visual context only



Wireline drawing

	OS Reference:	391991 E 818162 N	Horizontal Field of View:	90° (Cylindrical projection)	Camera:	Nikon D800	This wireframe is based upon Nextmap25 data with spot heights at 25m intervals aggregated to 50m resolution and does not precisely model small scale changes in landform or sharp breaks in slope. The wireframe model does not allow for the screening effects of vegetation or buildings. The model of turbine shown is similar to that proposed for the development. Please refer to the viewpoint pack for a larger scale location plan.			PROJECT TITLE	EUROPEAN OFFSHORE WIND DEPLOYMENT CENTRE	DRAWING TITLE	Viewpoint 4 - B999 Whitecairns
	Eye Level (AOD):	105.5m	Principal Distance:	522mm	Lens:	Nikkor 50mm f1.5				FIGURE	4.0	DATE	23/03/2016
	Direction of View:	112°	Paper Size:	841mm x 297mm (Half A1)	Camera Height:	1.5m AGL							
	Nearest Turbine:	8.1km, A02	Hub/Blade tip height (LAT):	108.5m / 190.5m	Photo Date / Time:	15/01/2016 15:00							



Photomontage

View flat at a comfortable arm's length

	OS Reference:	391991 E 818162 N	Horizontal Field of View:	53.5° (planar projection)	Camera:	Nikon D800	Turbines (Left-Right):	A05,A04,B06,A03,B05,A02,B03,B04,A01,B02,B01			DRAWING TITLE	EUROPEAN OFFSHORE WIND DEPLOYMENT CENTRE
	Eye Level (AOD):	105.5m	Principal Distance:	812.5mm	Lens:	Nikkor 50mm f1.5	Hub/Blade tip height (LAT):	108.5m / 190.5m			FIGURE	4.1
	Direction of View:	112°	Paper Size:	841mm x 297mm (Half A1)	Camera Height:	1.5m AGL	This photomontage is based upon Nextmap25 data with spot heights at 25m intervals aggregated to 50m resolution and does not precisely model small scale changes in landform or sharp breaks in slope. The model of turbine shown is similar to that proposed for the development.					
	Nearest Turbine:	8.1km, A02	Correct printed image Size:	820mm x 260mm	Photo Date / Time:	15/01/2016 15:00						



Turbine Comparison

View flat at a comfortable arm's length

	OS Reference:	391991 E 818162 N	Horizontal Field of View:	53.5° (planar projection)	Camera:	Nikon D800	Turbines (Left-Right):	A05,A04,B06,A03,B05,A02,B03,B04,A01,B02,B01				PROJECT TITLE	EUROPEAN OFFSHORE WIND DEPLOYMENT CENTRE	DRAWING TITLE	Viewpoint 4 - B999 Whitecairns
	Eye Level (AOD):	105.5m	Principal Distance:	812.5mm	Lens:	Nikkor 50mm f1.5	Hub/Blade tip height (LAT):	108.5m / 190.5m				FIGURE	4.2	DATE	23/03/2016
	Direction of View:	112°	Paper Size:	841mm x 297mm (Half A1)	Camera Height:	1.5m AGL	This photomontage is based upon Nextmap25 data with spot heights at 25m intervals aggregated to 50m resolution and does not precisely model small scale changes in landform or sharp breaks in slope. The model of turbine shown is similar to that proposed for the development.								
	Nearest Turbine:	8.1km, A02	Correct printed image Size:	820mm x 260mm	Photo Date / Time:	15/01/2016 15:00									