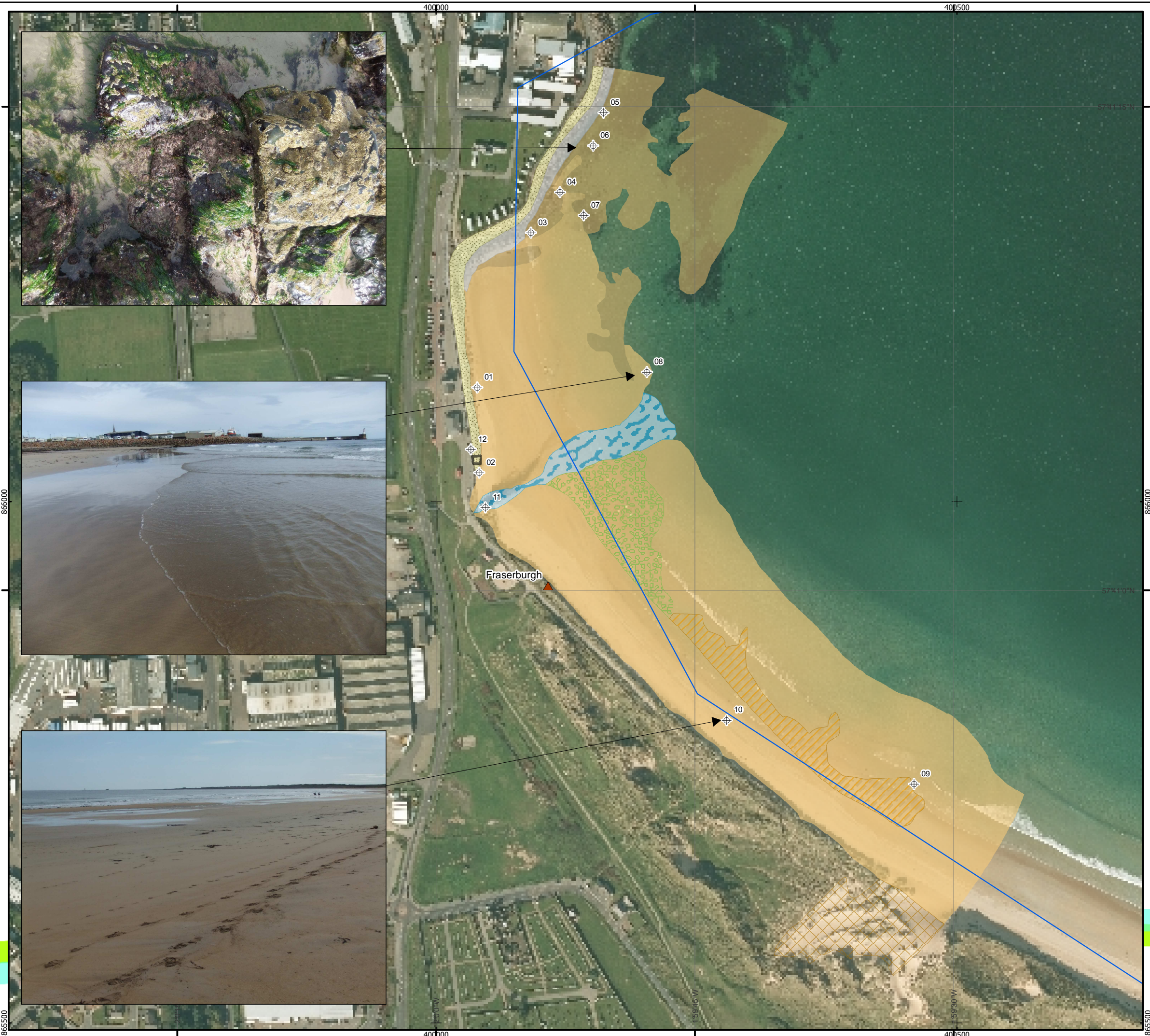


© Getmapping plc [2011]. This document is the property of contractors and sub-contractors and shall not be reproduced nor transmitted without prior written approval.



Moray Offshore Renewables Ltd

KEY

- Offshore Export Cable Area
- Cable Landing Sites
- Waypoint
- Biotope**
- LR.FLR.Lic.YG
- LR.HLR.MusB.Sem.LitX
- LS.LSa.MoSsa
- Features**
- Drift Algae on Rippled Sand
- Outfall
- Raised Sand Dune
- Rippled Sand
- Rock Armour
- End of Rock Armour

Horizontal Scale: 1:3,500 A3 Chart

Geodetic Parameters: OSGB 1936 / British National Grid

Produced: MXP
 Reviewed: HXC
 Approved: PH

Date: 25/04/2012 Revision: D
 REF: 840001-PPW0201-EMU-MAP-006

Figure 4.6-1 Intertidal Biotope - Fraserburgh

Moray Offshore Renewables Ltd