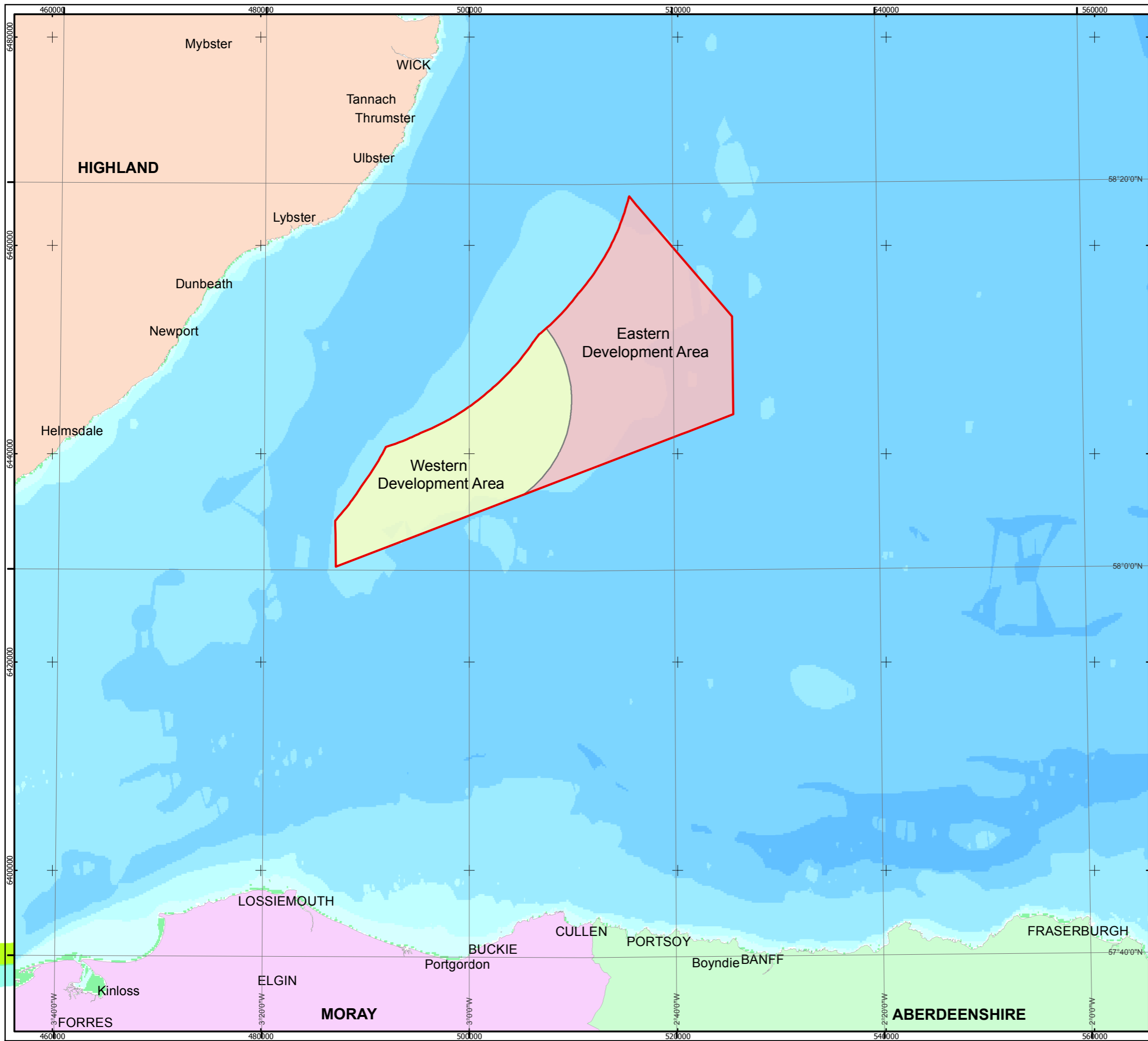


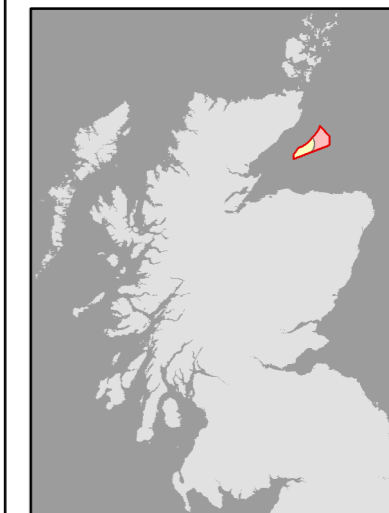
Contains Ordnance Survey data © Crown Copyright and database right [2014].
 © Sea Zone Solutions Limited, 2005, [012009.001, 022011.009]. This product includes mapping data licensed from Ordnance Survey (Great Britain) with the permission of HMSO. © Crown Copyright, 2006. All rights reserved.
 Moray Offshore Renewables Ltd © 2014. This document is the property of contractors and sub-contractors and shall not be reproduced nor transmitted without prior written approval.



Moray Offshore Renewables Ltd

KEY

- MORL Zone Boundary
- Eastern Development Area
- Western Development Area



Horizontal Scale: 1:350,000 A3 Chart N

Geodetic Parameters: WGS84 UTM Zone 30N

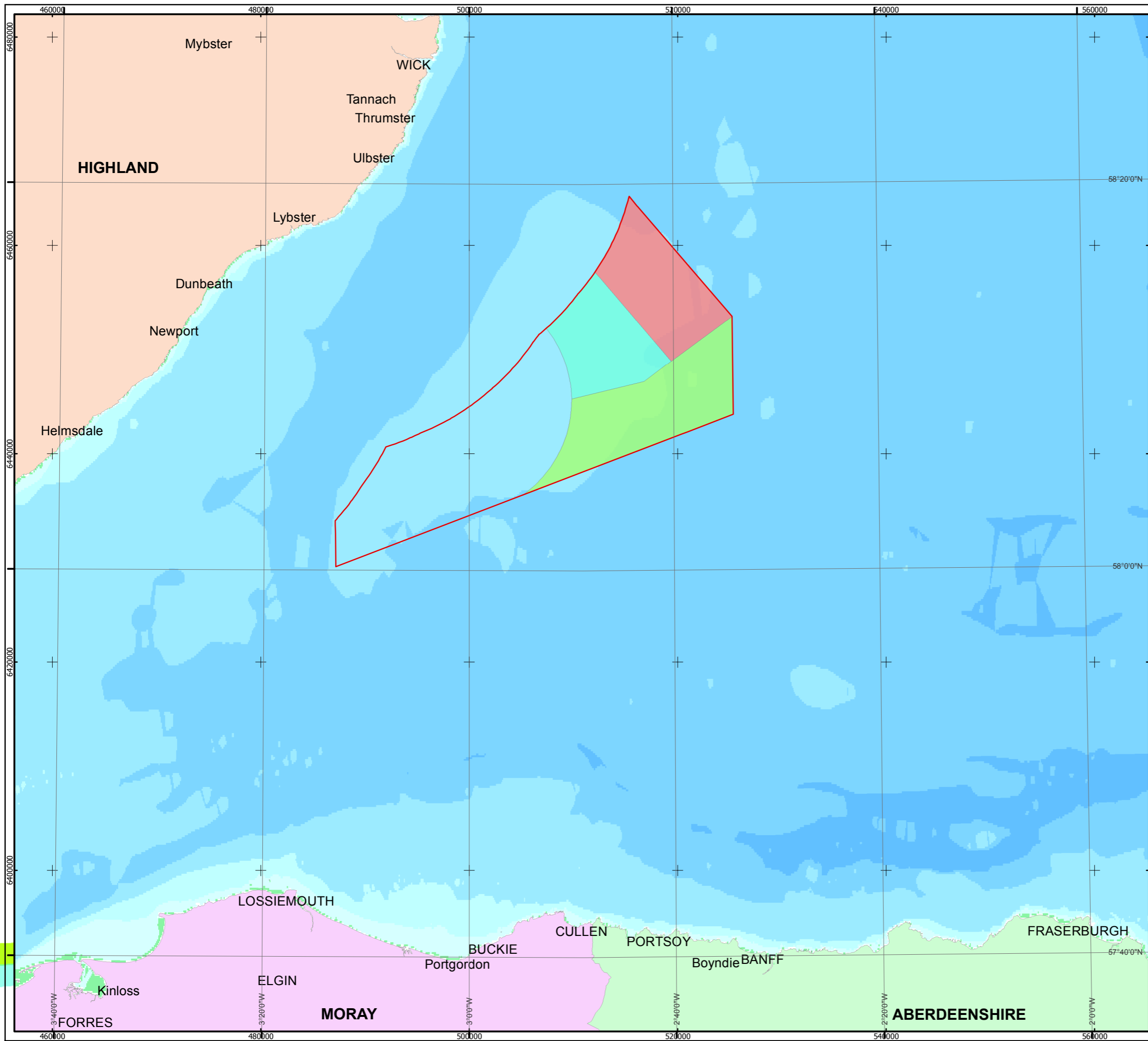
Produced: ES
 Reviewed: PM
 Approved: SP

Date: 26/06/2014 Revision: A
 REF: 8460001-PSO0240-MOR-MAP-002

**Figure 1.1-1 MORL
 Development Areas**





**Moray Offshore
 Renewables Ltd**

Contains Ordnance Survey data © Crown Copyright and database right [2014].
 © Sea Zone Solutions Limited, 2005, [012009.001, 022011.009]. This product includes mapping data licensed from Ordnance Survey (Great Britain) with the permission of HMSO. © Crown Copyright, 2006. All rights reserved.
 Moray Offshore Renewables Ltd © 2014. This document is the property of contractors and sub-contractors and shall not be reproduced nor transmitted without prior written approval.




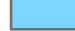





Moray Offshore Renewables Ltd

KEY

-  MORL Zone Boundary
-  MacColl Wind Farm
-  Stevenson Wind Farm
-  Telford Wind Farm

Bathymetry (m)

-  >10000
-  ≤10000
-  ≤5000
-  ≤1000
-  ≤500
-  ≤100
-  ≤50
-  ≤20
-  ≤10
-  ≥0

Horizontal Scale: 1:350,000 A3 Chart N


Geodetic Parameters: WGS84 UTM Zone 30N

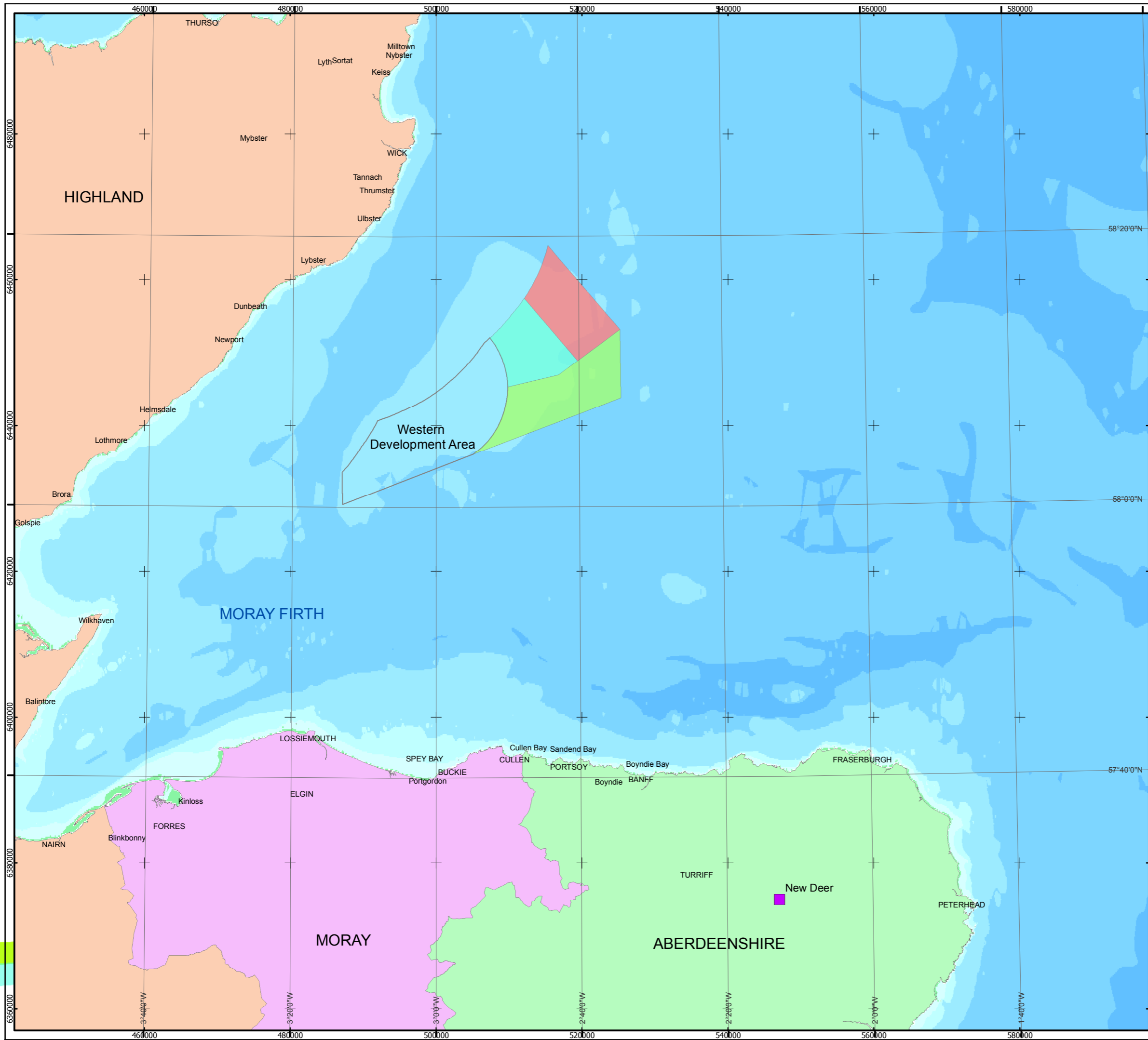
Produced: ES
 Reviewed: PM
 Approved: SP

Date: 26/06/2014 Revision: A
 REF: 8460001-PSO0240-MOR-MAP-002

**Figure 1.1-2 MORL
 Zone Boundaries**

**Moray Offshore
 Renewables Ltd**

Contains Ordnance Survey data © Crown Copyright and database right [2014].
 © SeaZone Solutions Limited, 2005, [012009.001, 022011.009]. This product includes mapping data licensed from Ordnance Survey (Great Britain) with the permission of HMSO. © Crown Copyright, 2006. All rights reserved.
 Moray Offshore Renewables Ltd © 2014. This document is the property of contractors and sub-contractors and shall not be reproduced nor transmitted without prior written approval.



Moray Offshore Renewables Ltd

KEY

- Grid Connection Interface Point
- MacColl Wind Farm
- Stevenson Wind Farm
- Telford Wind Farm

Bathymetry (m)

- >10000
- <=10000
- <=5000
- <=1000
- <=500
- <=100
- <=50
- <=20
- <=10
- >=0

Horizontal Scale: 1:500,000 A3 Chart

Geodetic Parameters: WGS84 UTM Zone 30N

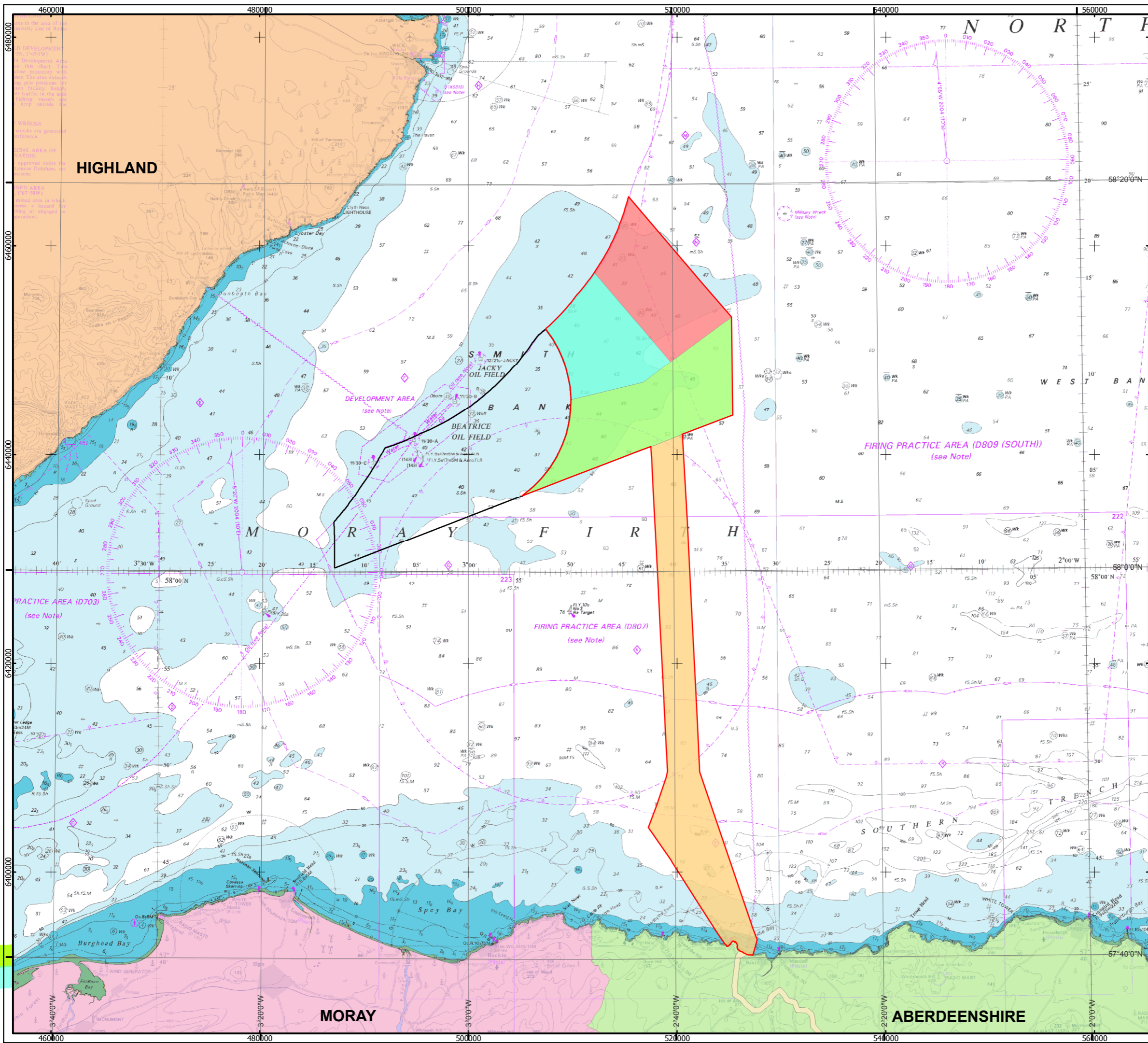
Produced: ES
 Reviewed: PM
 Approved: SP

Date: 26/06/2014 Revision: A
 REF: 8460001-PSO0240-MOR-MAP-003

Figure 1.1-3 Development Areas & Grid Connection Point

Moray Offshore Renewables Ltd

© SeaZone Solutions Limited, 2005, [012009.001, 022011.009].
 Moray Offshore Renewables Ltd © 2014. This document is the property of contractors and sub-contractors and shall not be reproduced without prior written approval.



Moray Offshore Renewables Ltd

KEY

- Modified Offshore Transmission Infrastructure
- Modified Offshore Export Cable Route Corridor
- Modified Onshore Export Cable Route Corridor
- MacColl Wind Farm
- Stevenson Wind Farm
- Telford Wind Farm
- Western Development Area

Horizontal Scale: 1:350,000 A3 Chart
 0 8,700 17,400 Meters

Geodetic Parameters: WGS84 UTM Zone 30N

Produced: ES
 Reviewed: PM
 Approved: SP

Date: 26/06/2014 Revision: A
 REF: 8460001-PSO0240-MOR-MAP-004

Figure 1.1-4 MORL Modified Offshore Cable Route

Moray Offshore Renewables Ltd

© Crown copyright and database rights [2014] Ordnance Survey [0100050437]
Moray Offshore Renewables Ltd © 2014. This document is the property of contractors and sub-contractors and shall not be reproduced nor transmitted without prior written approval



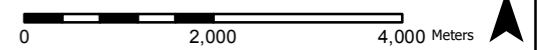
Moray Offshore Renewables Ltd

KEY

-  Modified Onshore Transmission Infrastructure
-  Modified Onshore Export Cable Route Corridor
-  Modified Offshore Export Cable Route Corridor
-  Substation Area

Horizontal Scale: 1:80,000

A3 Chart



Geodetic Parameters: WGS84 UTM Zone 30N

Produced: ES
Reviewed: PM
Approved: SP

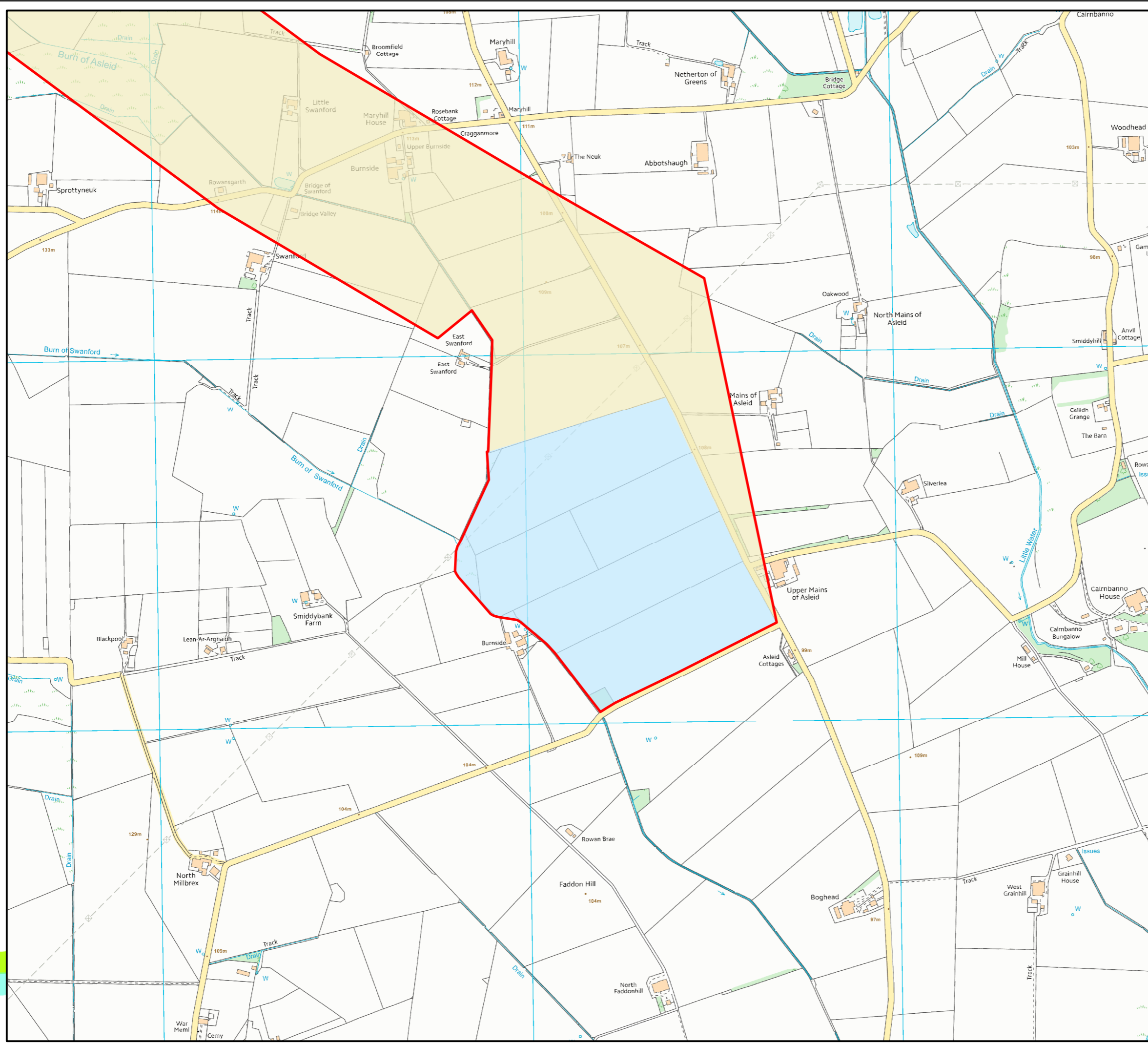
Date: 26/06/2014 Revision: A

REF: 8460001-PSO0240-MOR-MAP-005

Figure 1.1-5 MORL Modified Onshore Cable Route



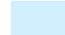
Moray Offshore Renewables Ltd

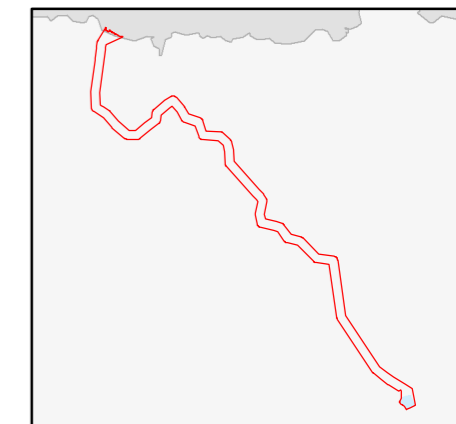
© Crown copyright and database rights [2014] Ordnance Survey [0100050437]
Moray Offshore Renewables Ltd © 2014. This document is the property of contractors and sub-contractors and shall not be reproduced nor transmitted without prior written approval.




Moray Offshore Renewables Ltd

KEY

-  Modified Onshore Transmission Infrastructure
-  Modified Onshore Export Cable Route Corridor
-  Onshore Substation Area



Horizontal Scale: 1:10,000 A3 Chart


Geodetic Parameters: WGS84 UTM Zone 30N

Produced: ES
Reviewed: PM
Approved: SP

Date: 26/06/2014 Revision: A
REF: 8460001-PSO0240-MOR-MAP-006

Figure 1.1-6 MORL Onshore Substation Location

Moray Offshore Renewables Ltd