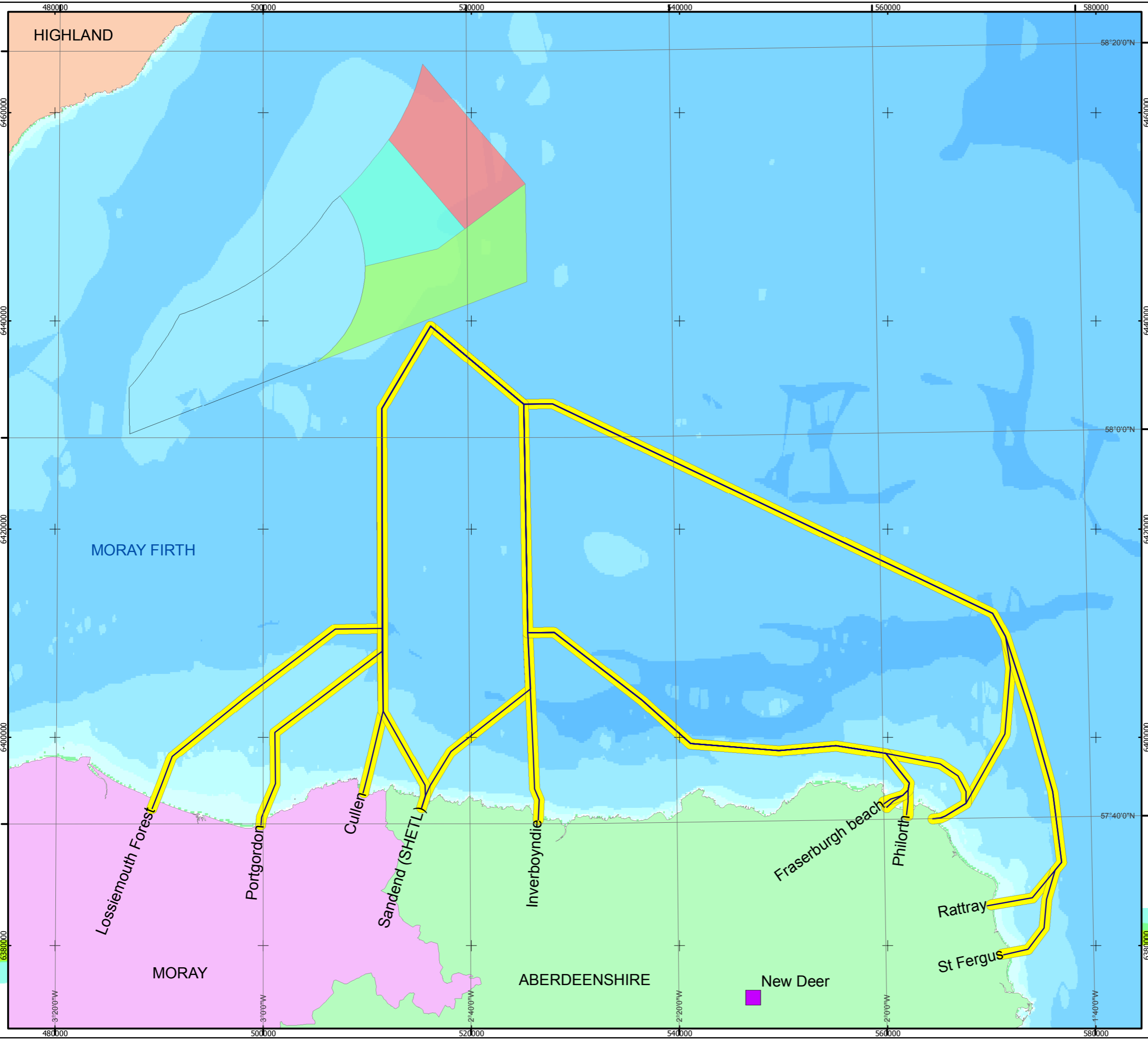


Contains Ordnance Survey data © Crown Copyright and database right [2014].  
 © SeaZone Solutions Limited, 2005, [012009.001, 022011.009]. This product includes mapping data licensed from Ordnance Survey (Great Britain) with the permission of HMSO. © Crown Copyright, 2006. All rights reserved.  
 Moray Offshore Renewables Ltd © 2014. This document is the property of contractors and sub-contractors and shall not be reproduced nor transmitted without prior written approval.



**Moray Offshore Renewables Ltd**

**KEY**

- Grid Connection Interface Point
- METOC-Hyder Offshore Cable Route Initial Options
- MacColl
- Stevenson
- Telford
- Western Development Area
- METOC-Hyder Offshore Cable Route Corridor

**Bathymetry (m)**

- >10000
- <=10000
- <=5000
- <=1000
- <=500
- <=100
- <=50
- <=20
- <=10
- >=0

Horizontal Scale: 1:350,000 A3 Chart

Geodetic Parameters: WGS84 UTM Zone 30N

Produced: ES  
 Reviewed: PM  
 Approved: SP

Date: 26/06/2014 Revision: A

REF: 8460001-PSO0240-MOR-MAP-007

**Figure 2.1-1**  
**Metoc-Hyder Offshore**  
**Export Cable Corridor Study**

**Moray Offshore**  
**Renewables Ltd**