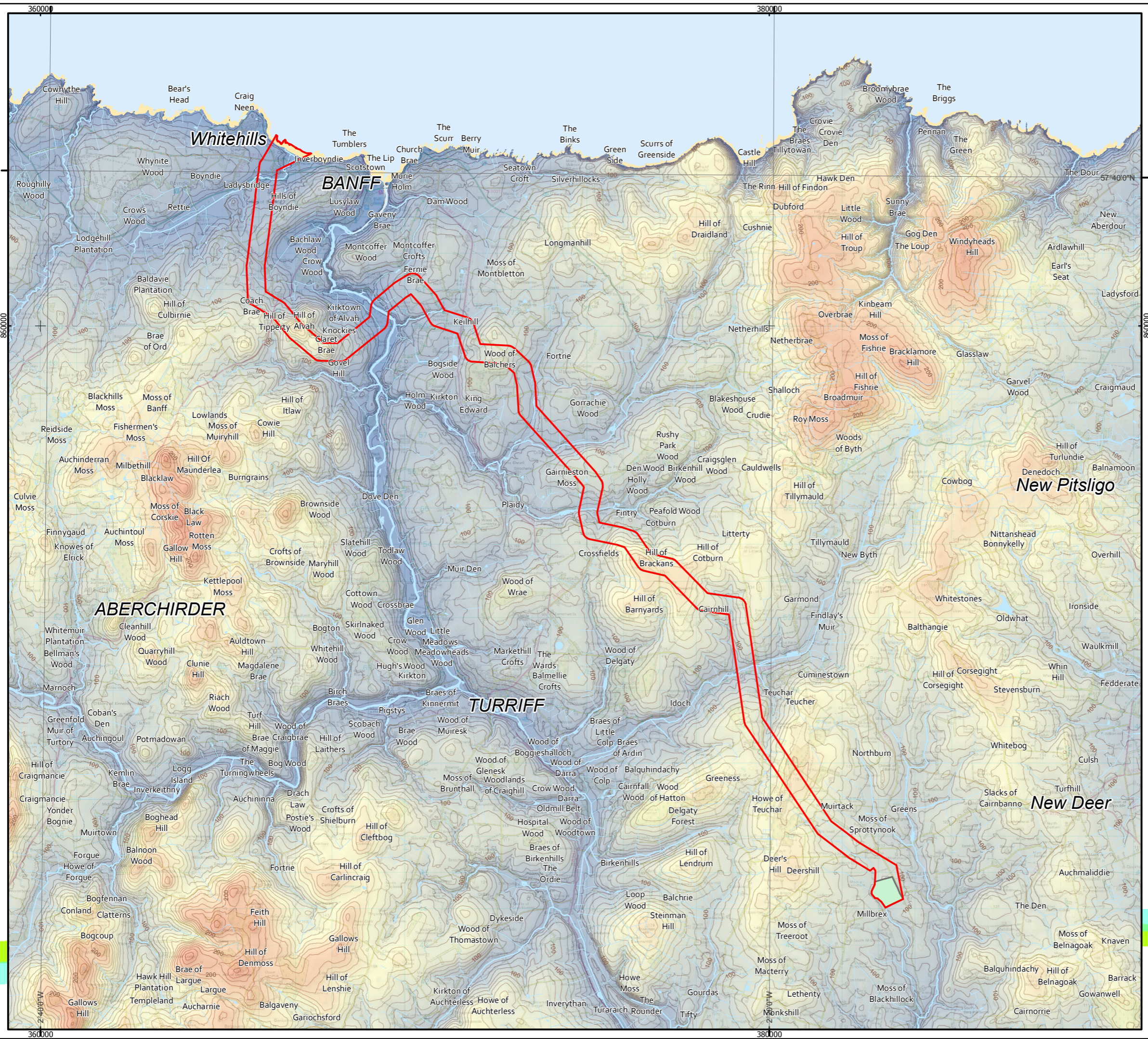


© Crown copyright and database rights 2014. Ordnance Survey [0100050437]. Moray Offshore Renewables Ltd © 2014. This document is the property of contractors and sub-contractors and shall not be reproduced nor transmitted without prior written approval.



Moray Offshore Renewables Ltd

KEY

- Modified OnTI
- Proposed Substation Area
- Watercourse

Height above sea level

Value

High : 429 m

Low : 0 m

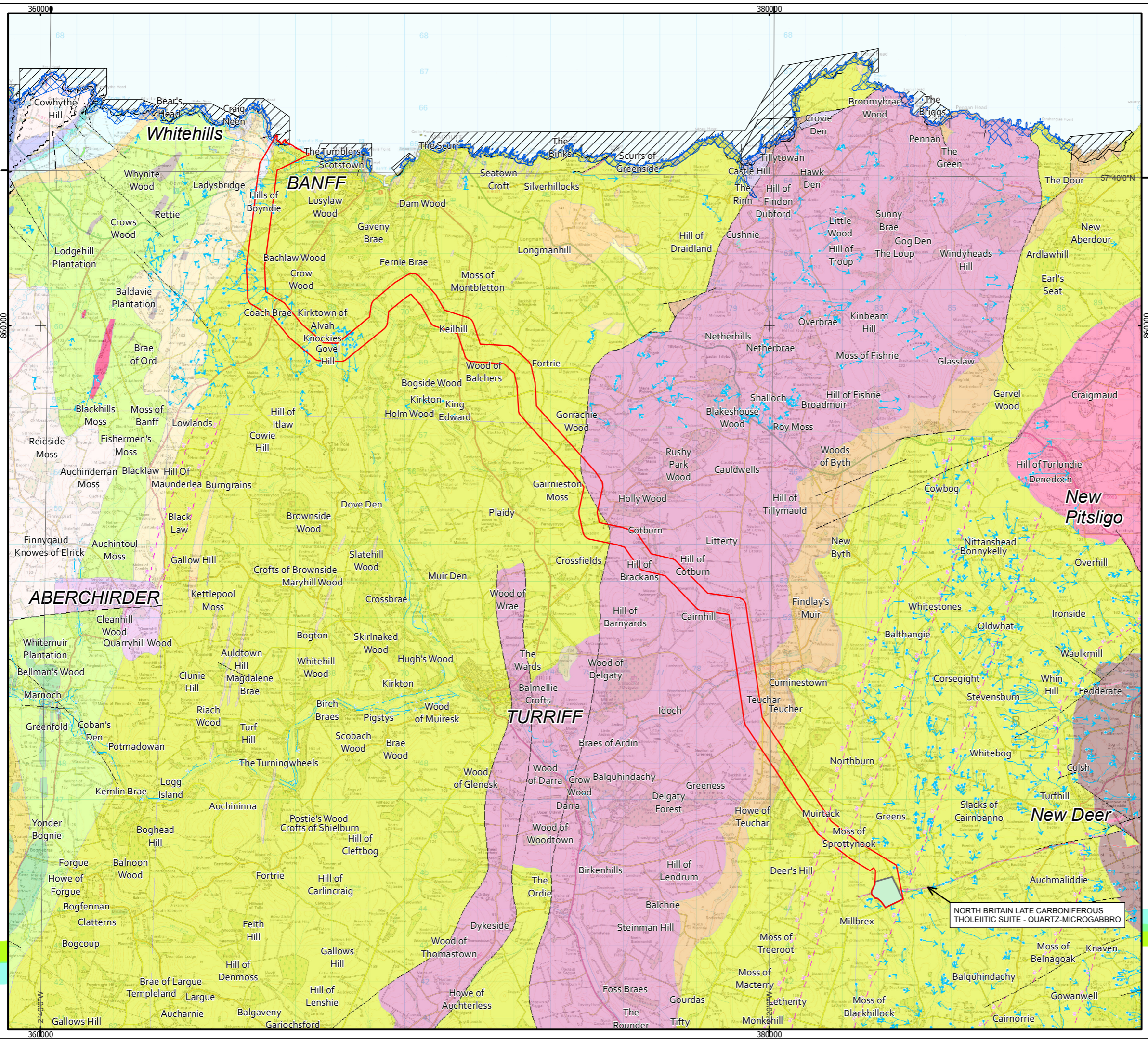
Horizontal Scale: 1:100,000 A3 Chart N

| | |
|--|-------------|
| Geodetic Parameters: British National Grid | |
| Produced: GP | |
| Reviewed: ES | |
| Approved: AH | |
| Date: 17/06/2014 | Revision: B |
| REF: 8460001-PSO0041-ARP-MAP-007 | |

**Figure 3.2-1
Site Plan**

**Moray Offshore
Renewables Ltd**

© Crown copyright and database rights 2014. Ordnance Survey [0100050437]. Contains British Geological Survey materials © NERC 2014. Moray Offshore Renewables Ltd © 2014. This document is the property of contractors and sub-contractors and shall not be reproduced nor transmitted without prior written approval.



Moray Offshore Renewables Ltd

- KEY**
- Modified OnTI
 - Proposed Substation Area
 - Geological Conservation Review Site (GCR)
 - Geological Site of Special Scientific Interest (SSSI)
- Linear features**
- Fault, inferred, displacement unknown
 - Glacial meltwater channel centre line, undifferentiated
 - Metamorphic zone boundary
- Bedrock Geology**
- CROVIE SANDSTONE GROUP - SANDSTONE, SILTSTONE AND MUDSTONE
 - GARDENSTOWN CONGLOMERATE FORMATION - CONGLOMERATE
 - KNOCK HEAD GRIT MEMBER - PSAMMITE
 - MACDUFF FORMATION - MICACEOUS PSAMMITE, SEMIPELITE AND PELITE
 - NORTH BRITAIN LATE CARBONIFEROUS THOLEIITIC SUITE - QUARTZ-MICROGABBRO

Horizontal Scale: 1:100,000 A3 Chart
N

Geodetic Parameters: British National Grid

Produced: GP
 Reviewed: ES
 Approved: AH

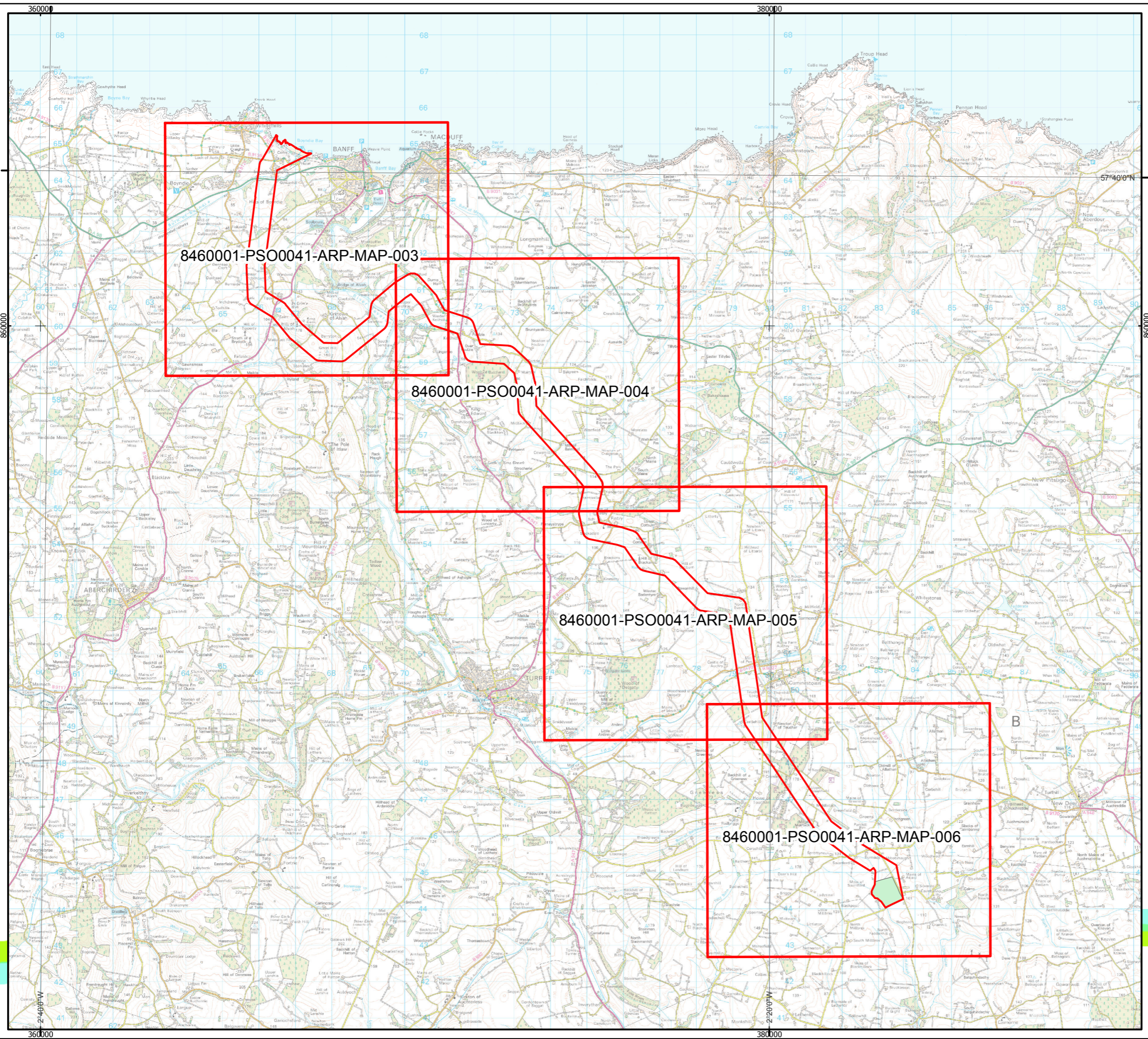
Date: 17/06/2014 Revision: B
 REF: 8460001-PSO0041-ARP-MAP-008

NORTH BRITAIN LATE CARBONIFEROUS THOLEIITIC SUITE - QUARTZ-MICROGABBRO

Figure 3.2-2
Solid Geology


Moray Offshore Renewables Ltd

© Crown copyright and database rights 2014. Ordnance Survey [0100050437]. Contains British Geological Survey materials © NERC 2014. Moray Offshore Renewables Ltd © 2014. This document is the property of contractors and sub-contractors and shall not be reproduced nor transmitted without prior written approval.



Moray Offshore Renewables Ltd

- KEY**
- Modified OnTI
 - Proposed Substation Area

Horizontal Scale: 1:100,000 A3 Chart N


Geodetic Parameters: British National Grid

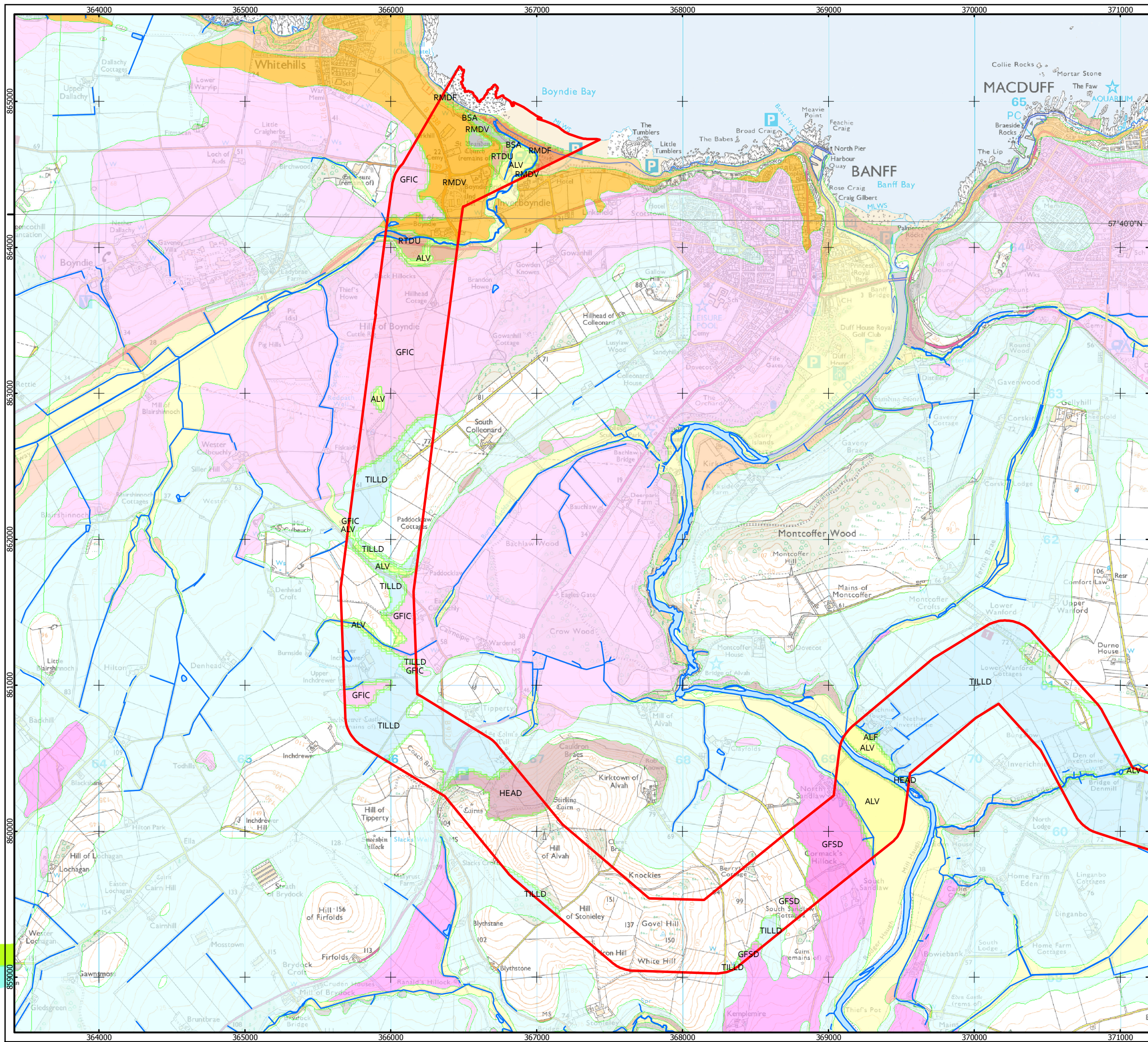
Produced: GP
Reviewed: ES
Approved: AH

Date: 17/06/2014 Revision: B
REF: 8460001-PSO0041-ARP-MAP-009

Figure 3.2-3a
Superficial Geology Index Map

Moray Offshore
Renewables Ltd

© Crown copyright and database rights 2014. Ordnance Survey [0100050437]. Contains British Geological Survey materials © NERC 2014. Moray Offshore Renewables Ltd © 2014. This document is the property of contractors and sub-contractors and shall not be reproduced nor transmitted without prior written approval.



Moray Offshore Renewables Ltd

- KEY**
- Modified OnTI
 - Proposed Substation Area
 - Watercourse
- Superficial Geology**
- ALF - ALLUVIAL FAN DEPOSITS - GRAVEL, SAND, SILT AND CLAY
 - ALV - ALLUVIUM - CLAY, SILT, SAND AND GRAVEL
 - BSA - BLOWN SAND - SAND
 - GFIC - GLACIOFLUVIAL ICE CONTACT DEPOSITS - GRAVEL, SAND AND SILT
 - GFSD - GLACIOFLUVIAL SHEET DEPOSITS - GRAVEL, SAND AND SILT
 - HEAD - GRAVEL, SAND, SILT AND CLAY
 - KBSI - KIRK BURN SILT FORMATION - CLAY, SILT AND SAND
 - MBD - MARINE BEACH DEPOSITS - GRAVEL, SAND AND SILT
 - PEAT - PEAT
 - RMDV - RAISED MARINE DEPOSITS OF FLANDRIAN AGE - GRAVEL, SAND AND SILT
 - RTDU - RIVER TERRACE DEPOSITS (UNDIFFERENTIATED) - GRAVEL, SAND, SILT AND CLAY
 - TILLD - TILL, DEVENSIAN - DIAMICTON
 - WHGL - WHITEHILLS GLACIGENIC FORMATION - DIAMICTON, CLAY, SAND AND GRAVEL [UNLITHIFIED DEPOSITS CODING SCHEME - EXTENDED]
 - N/A

Horizontal Scale: 1:25,000 A3 Chart
 0 630 1,260 Meters

Geodetic Parameters: British National Grid

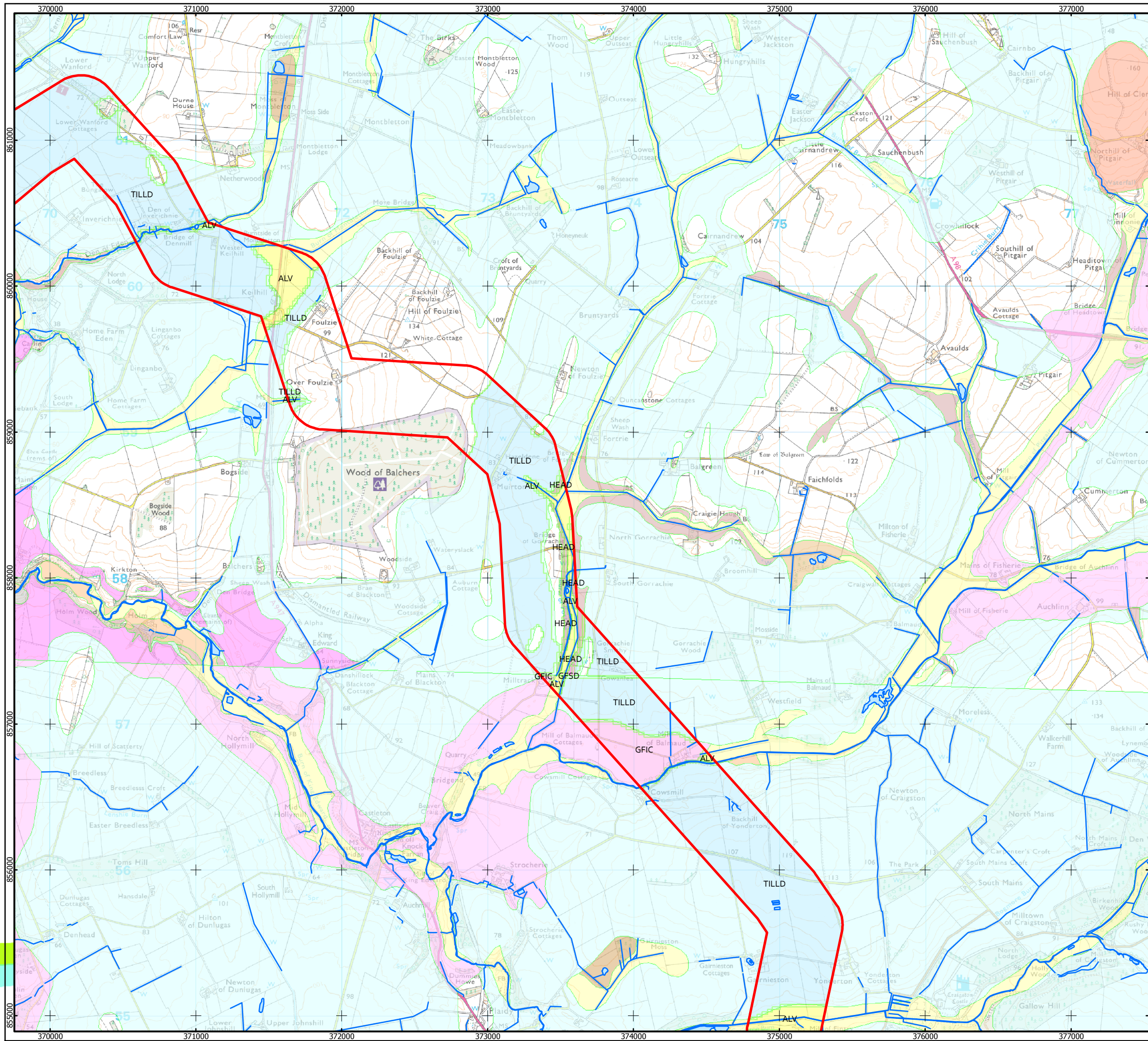
Produced: GP
 Reviewed: ES
 Approved: AH

Date: 17/06/2014 Revision: B
 REF: 8460001-PSO0041-ARP-MAP-003

Figure 3.2-3b
Superficial Geology

Moray Offshore
 Renewables Ltd

© Crown copyright and database rights 2014. Ordnance Survey [0100050437]. Contains British Geological Survey materials © NERC 2014. Moray Offshore Renewables Ltd © 2014. This document is the property of contractors and sub-contractors and shall not be reproduced nor transmitted without prior written approval.



Moray Offshore Renewables Ltd

- KEY**
- Modified OnTI
 - Proposed Substation Area
 - Watercourse
- Superficial Geology**
- ALF - ALLUVIAL FAN DEPOSITS - GRAVEL, SAND, SILT AND CLAY
 - ALV - ALLUVIUM - CLAY, SILT, SAND AND GRAVEL
 - BSA - BLOWN SAND - SAND
 - GFIC - GLACIOFLUVIAL ICE CONTACT DEPOSITS - GRAVEL, SAND AND SILT
 - GFSD - GLACIOFLUVIAL SHEET DEPOSITS - GRAVEL, SAND AND SILT
 - HEAD - GRAVEL, SAND, SILT AND CLAY
 - KBSI - KIRK BURN SILT FORMATION - CLAY, SILT AND SAND
 - MBD - MARINE BEACH DEPOSITS - GRAVEL, SAND AND SILT
 - PEAT - PEAT
 - RMDf - RAISED MARINE DEPOSITS OF FLANDRIAN AGE - GRAVEL, SAND AND SILT
 - RMDV - RAISED MARINE DEPOSITS, DEVENSIAN - GRAVEL, SAND AND SILT
 - RTDU - RIVER TERRACE DEPOSITS (UNDIFFERENTIATED) - GRAVEL, SAND, SILT AND CLAY
 - TILLD - TILL, DEVENSIAN - DIAMICTON
 - WHGL - WHITEHILLS GLACIGENIC FORMATION - DIAMICTON, CLAY, SAND AND GRAVEL [UNLITHIFIED DEPOSITS CODING SCHEME - EXTENDED]
 - N/A

Horizontal Scale: 1:25,000 A3 Chart
 0 630 1,260 Meters

Geodetic Parameters: British National Grid

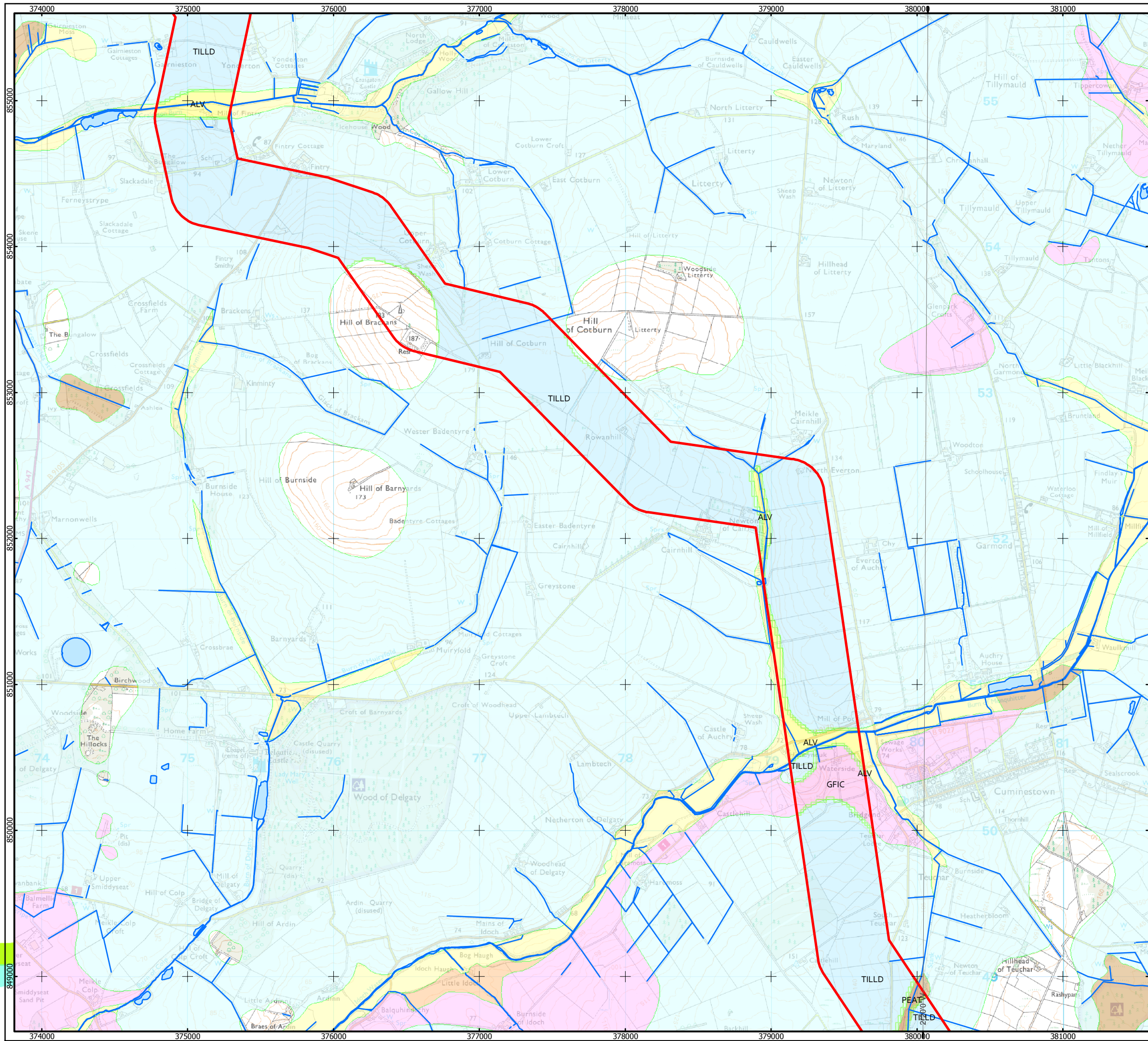
Produced: GP
 Reviewed: ES
 Approved: AH

Date: 17/06/2014 Revision: B
 REF: 8460001-PSO0041-ARP-MAP-004

Figure 3.2-3c
Superficial Geology

Moray Offshore
 Renewables Ltd

© Crown copyright and database rights 2014. Ordnance Survey [0100050437]. Contains British Geological Survey materials © NERC 2014. Moray Offshore Renewables Ltd © 2014. This document is the property of contractors and sub-contractors and shall not be reproduced nor transmitted without prior written approval.



Moray Offshore Renewables Ltd

- KEY**
- Modified OnTI
 - Proposed Substation Area
 - Watercourse
- Superficial Geology**
- ALF - ALLUVIAL FAN DEPOSITS - GRAVEL, SAND, SILT AND CLAY
 - ALV - ALLUVIUM - CLAY, SILT, SAND AND GRAVEL
 - BSA - BLOWN SAND - SAND
 - GFIC - GLACIOFLUVIAL ICE CONTACT DEPOSITS - GRAVEL, SAND AND SILT
 - GFSD - GLACIOFLUVIAL SHEET DEPOSITS - GRAVEL, SAND AND SILT
 - HEAD - GRAVEL, SAND, SILT AND CLAY
 - KBSI - KIRK BURN SILT FORMATION - CLAY, SILT AND SAND
 - MBD - MARINE BEACH DEPOSITS - GRAVEL, SAND AND SILT
 - PEAT - PEAT
 - RMDV - RAISED MARINE DEPOSITS OF FLANDRIAN AGE - GRAVEL, SAND AND SILT
 - RMDV - RAISED MARINE DEPOSITS, DEVENSIAN - GRAVEL, SAND AND SILT
 - RTDU - RIVER TERRACE DEPOSITS (UNDIFFERENTIATED) - GRAVEL, SAND, SILT AND CLAY
 - TILLD - TILL, DEVENSIAN - DIAMICTON
 - WHGL - WHITEHILLS GLACIGENIC FORMATION - DIAMICTON, CLAY, SAND AND GRAVEL [UNLITHIFIED DEPOSITS CODING SCHEME - EXTENDED]
 - N/A

Horizontal Scale: 1:25,000 A3 Chart
 0 630 1,260 Meters

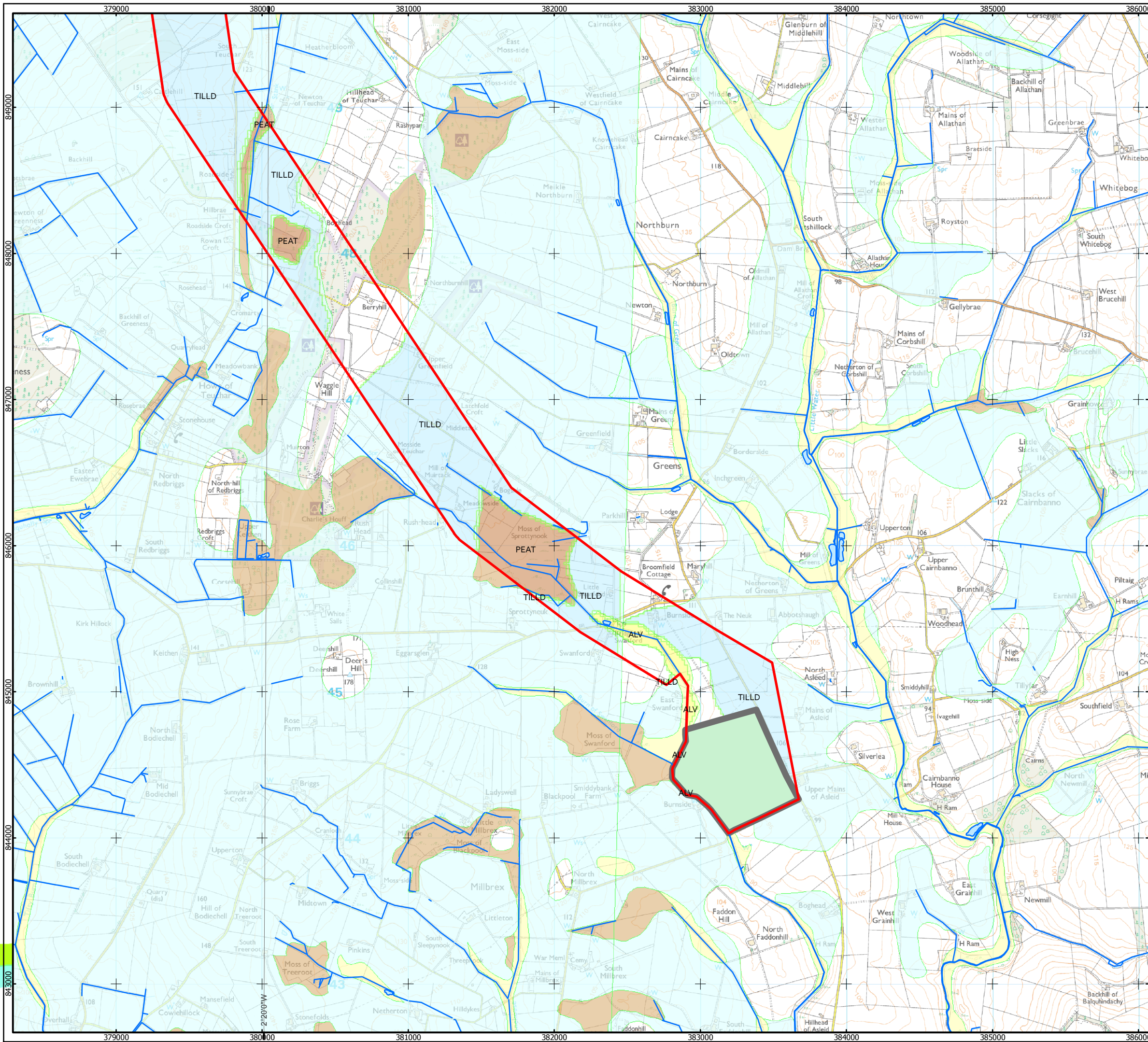
Geodetic Parameters: British National Grid

Produced: GP
 Reviewed: ES
 Approved: AH

Date: 17/06/2014 Revision: B
 REF: 8460001-PSO0041-ARP-MAP-005

**Figure 3.2-3d
 Superficial Geology**

**Moray Offshore
 Renewables Ltd**



Moray Offshore Renewables Ltd

KEY

- Modified OnTI
- Proposed Substation Area
- Watercourse

Superficial Geology

- ALF - ALLUVIAL FAN DEPOSITS - GRAVEL, SAND, SILT AND CLAY
- ALV - ALLUVIUM - CLAY, SILT, SAND AND GRAVEL
- BSA - BLOWN SAND - SAND
- GFIC - GLACIOFLUVIAL ICE CONTACT DEPOSITS - GRAVEL, SAND AND SILT
- GFSD - GLACIOFLUVIAL SHEET DEPOSITS - GRAVEL, SAND AND SILT
- HEAD - GRAVEL, SAND, SILT AND CLAY
- KBSI - KIRK BURN SILT FORMATION - CLAY, SILT AND SAND
- MBD - MARINE BEACH DEPOSITS - GRAVEL, SAND AND SILT
- PEAT - PEAT
- RMDF - RAISED MARINE DEPOSITS OF FLANDRIAN AGE - GRAVEL, SAND AND SILT
- RMDV - RAISED MARINE DEPOSITS, DEVENSIAN - GRAVEL, SAND AND SILT
- RTDU - RIVER TERRACE DEPOSITS (UNDIFFERENTIATED) - GRAVEL, SAND, SILT AND CLAY
- TILLD - TILL, DEVENSIAN - DIAMICTON
- WHGL - WHITEHILLS GLACIGENIC FORMATION - DIAMICTON, CLAY, SAND AND GRAVEL [UNLITHIFIED DEPOSITS CODING SCHEME - EXTENDED]
- N/A

Horizontal Scale: 1:25,000 A3 Chart

 0 630 1,260 Meters

Geodetic Parameters: British National Grid

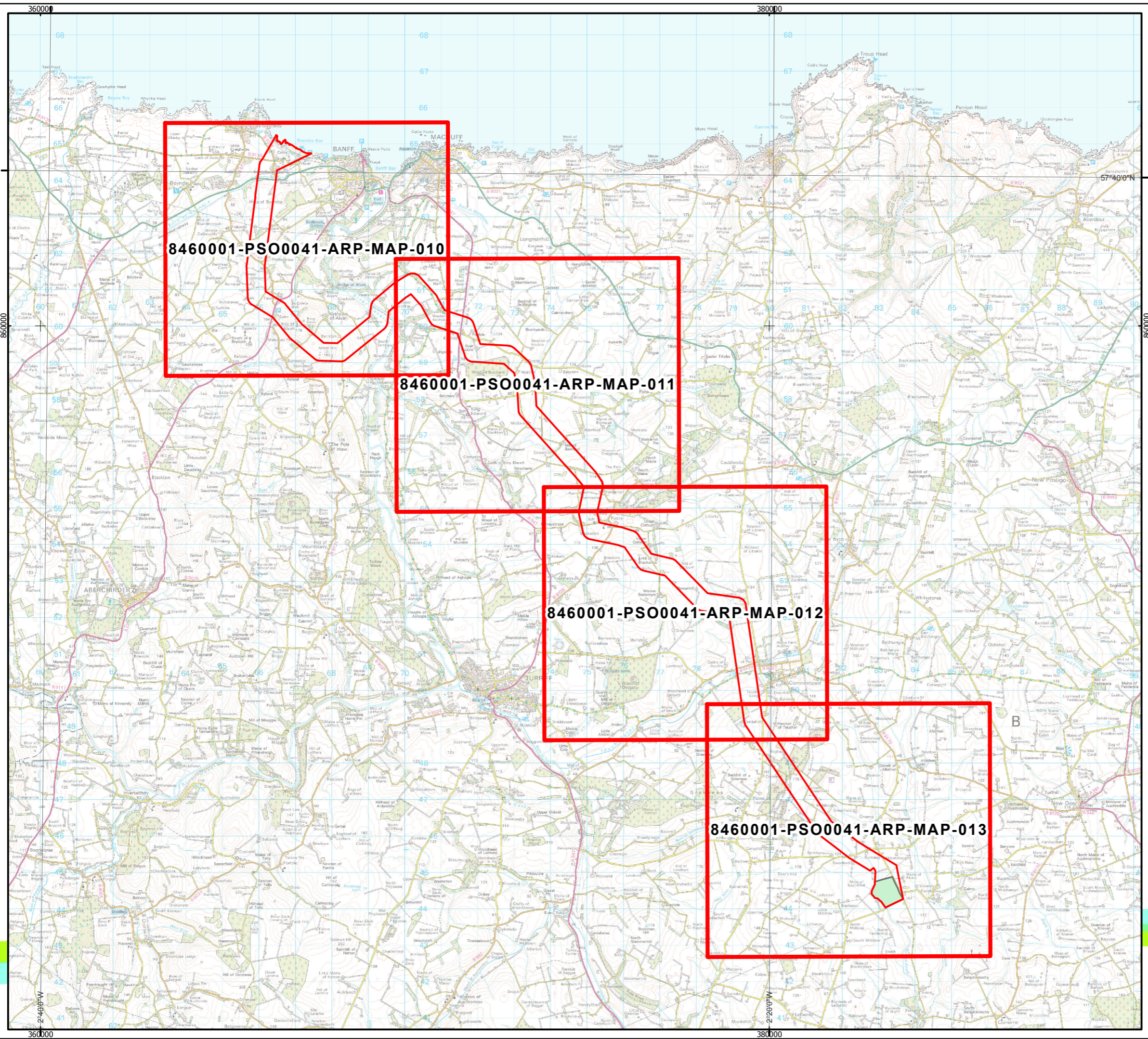
Produced: GP
 Reviewed: ES
 Approved: AH

Date: 17/06/2014 Revision: B
 REF: 8460001-PSO0041-ARP-MAP-006

Figure 3.2-3e
Superficial Geology



Moray Offshore
 Renewables Ltd

© Crown copyright and database rights 2014. Ordnance Survey [0100050437].
Moray Offshore Renewables Ltd © 2014. This document is the property of contractors and sub-contractors and shall not be reproduced nor transmitted without prior written approval.



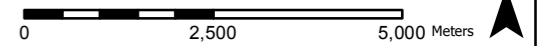
Moray Offshore Renewables Ltd

KEY

-  Modified OnTI
-  Proposed Substation Area

Horizontal Scale: 1:100,000

A3 Chart



Geodetic Parameters: British National Grid

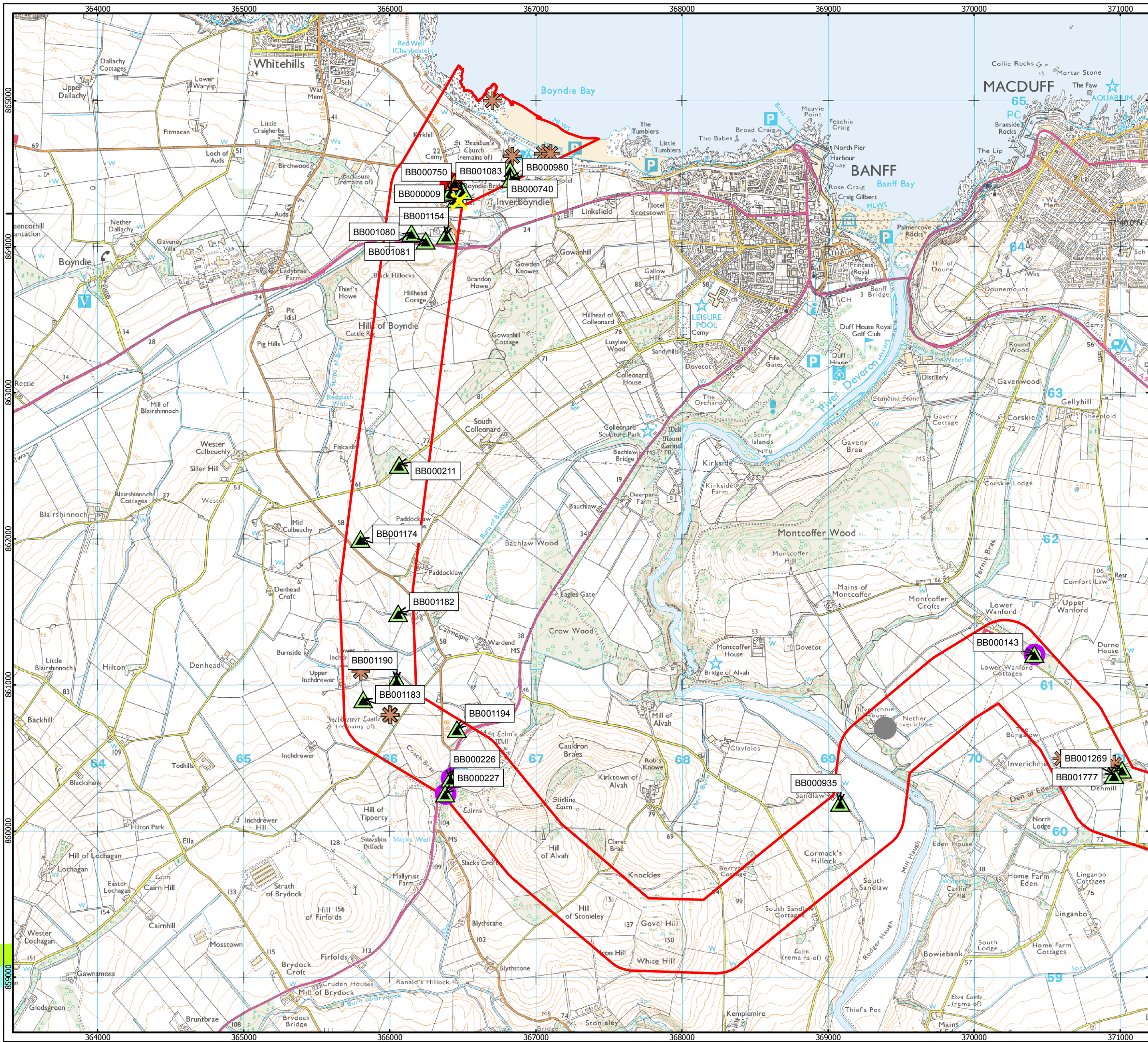
Produced: GP
Reviewed: ES
Approved: AH

Date: 17/06/2014 Revision: B
REF: 8460001-PSO0041-ARP-MAP-009

Figure 3.2-4a
Potentially Contaminated Land
Index Map

Moray Offshore
Renewables Ltd

© Crown copyright and database rights 2014. Ordnance Survey [0100050437]. LANDMARK INFORMATION GROUP LIMITED licence number LIG/2014/56953837. Moray Offshore Renewables Ltd © 2014. This document is the property of contractors and sub-contractors and shall not be reproduced nor transmitted without prior written approval.



Moray Offshore Renewables Ltd

KEY

Modified OnTI

Registered Waste Treatment Site

Potentially Contaminated Sites (as identified by Aberdeenshire Council)

Potentially moderate contaminative risk to the Proposed Scheme
 Potentially slight/low contaminative risk to the Proposed Scheme

Potentially Contaminative Trades

STATUS

Active
 Inactive

Discharge Consents

CLASS

Agricultural Discharge
 Sewerage Discharge
 BGS Recorded Mineral Sites

Horizontal Scale: 1:25,000 A3 Chart
 0 625 1,250 Meters

Geodetic Parameters: British National Grid

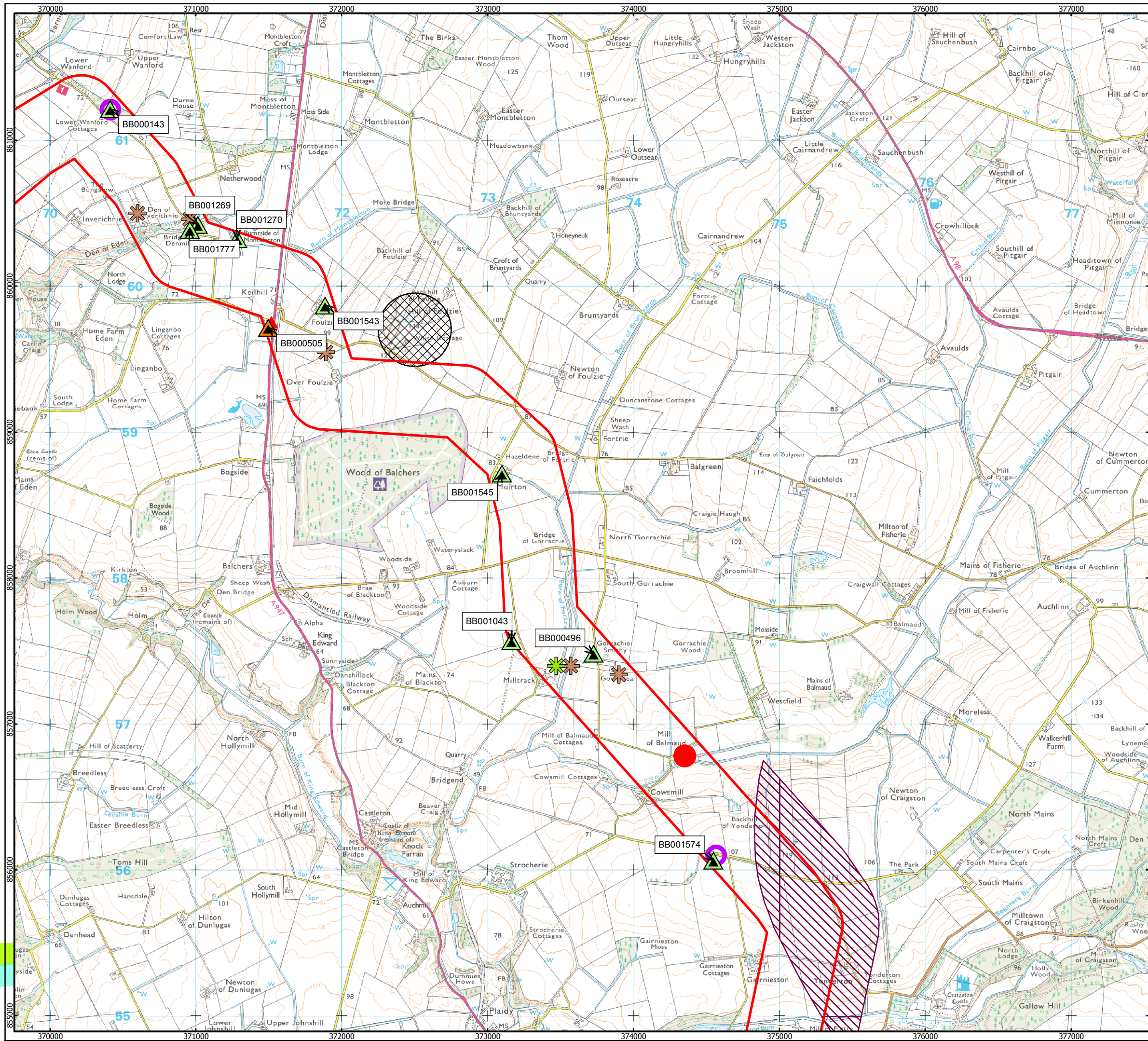
Produced: GP
 Reviewed: ES
 Approved: AH

Date: 23/06/2014 Revision: D
 REF: 8460001-PSO0041-ARP-MAP-010

Figure 3.2-4b
Potentially Contaminated Land

Moray Offshore
 Renewables Ltd

© Crown copyright and database rights 2014. Ordnance Survey [0100050437]. LANDMARK INFORMATION GROUP LIMITED licence number LIG/2014/56953837. Moray Offshore Renewables Ltd © 2014. This document is the property of contractors and sub-contractors and shall not be reproduced without prior written approval.



Moray Offshore Renewables Ltd

- KEY**
- Modified OnTI
 - ▲ Fuel Stations
 - Potentially Contaminated Sites (as identified by Aberdeenshire Council)**
 - ▲ Potentially moderate contaminative risk to the Proposed Scheme
 - ▲ Potentially slight/low contaminative risk to the Proposed Scheme
 - Potentially Contaminative Trades**
 - STATUS**
 - Active
 - Discharge Consents**
 - CLASS**
 - ✱ Agricultural Discharge
 - ✱ Sewerage Discharge
 - BGS Recorded Mineral Sites
 - Registered Landfill Site**
 - STATUS**
 - Licence lapsed/not applicable
 - Potential Mining Area**
 - Rare: Infrequent minor mining may have occurred but restricted in extent

Horizontal Scale: 1:25,000 A3 Chart

 0 625 1,250 Meters N

Geodetic Parameters: British National Grid

Produced: GP
 Reviewed: ES
 Approved: AH

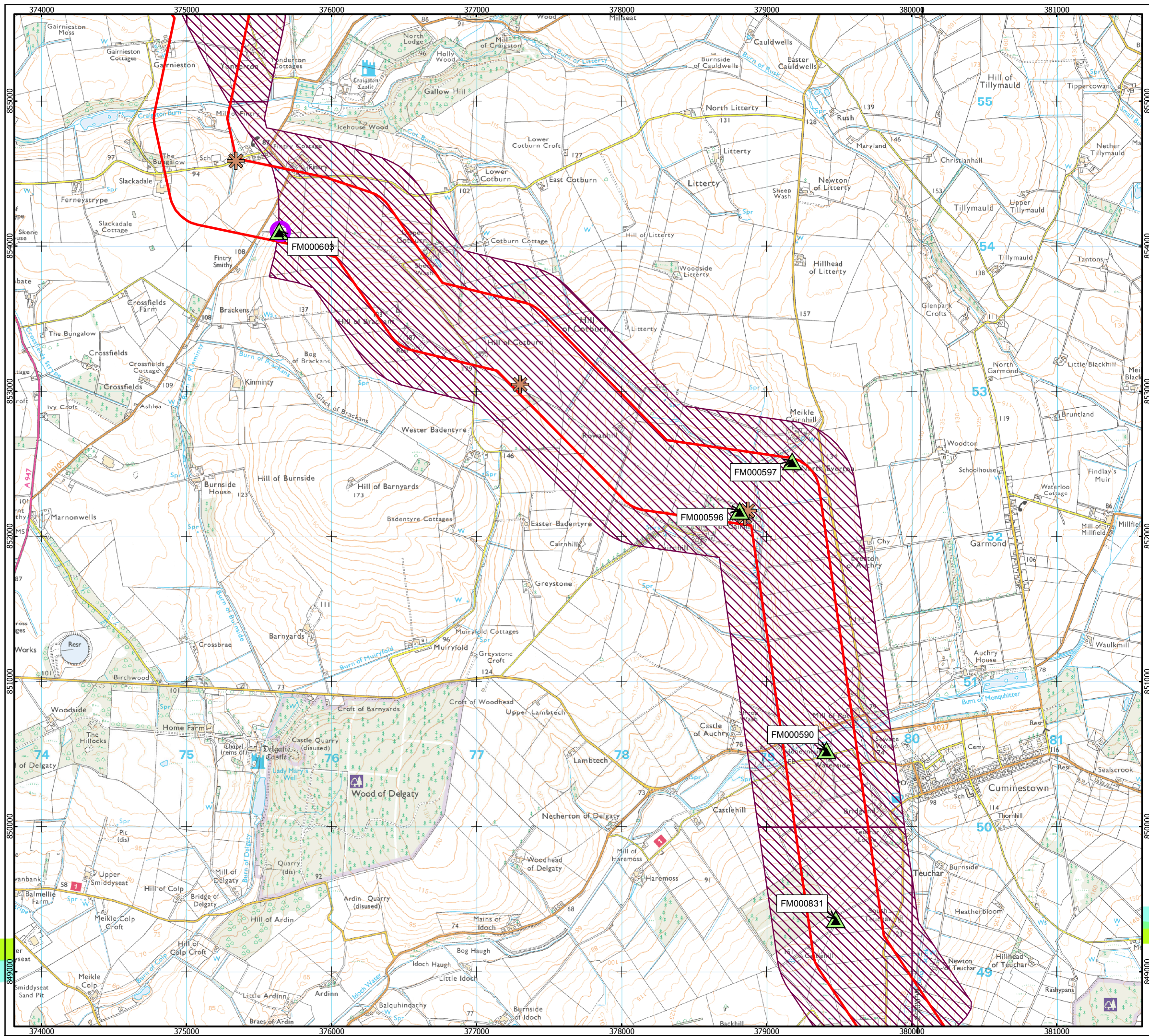
Date: 23/06/2014 Revision: D

REF: 8460001-PSO0041-ARP-MAP-011

Figure 3.2-4c
Potentially Contaminated Land

Moray Offshore Renewables Ltd

© Crown copyright and database rights 2014. Ordnance Survey [0100050437]. LANDMARK INFORMATION GROUP LIMITED licence number LIG/2014/56953837. Moray Offshore Renewables Ltd © 2014. This document is the property of contractors and sub-contractors and shall not be reproduced nor transmitted without prior written approval.



Moray Offshore Renewables Ltd

- KEY**
- Modified OnTI
 - Potentially Contaminated Sites (as identified by Aberdeenshire Council)**
 - ▲ Potentially slight/low contaminative risk to the Proposed Scheme
 - Discharge Consents**
 - CLASS**
 - ✳ Sewerage Discharge
 - BGS Recorded Mineral Sites
 - Potential Mining Area**
 - Rare: Infrequent minor mining may have occurred but restricted in extent

Horizontal Scale: 1:25,000 A3 Chart

Geodetic Parameters: British National Grid

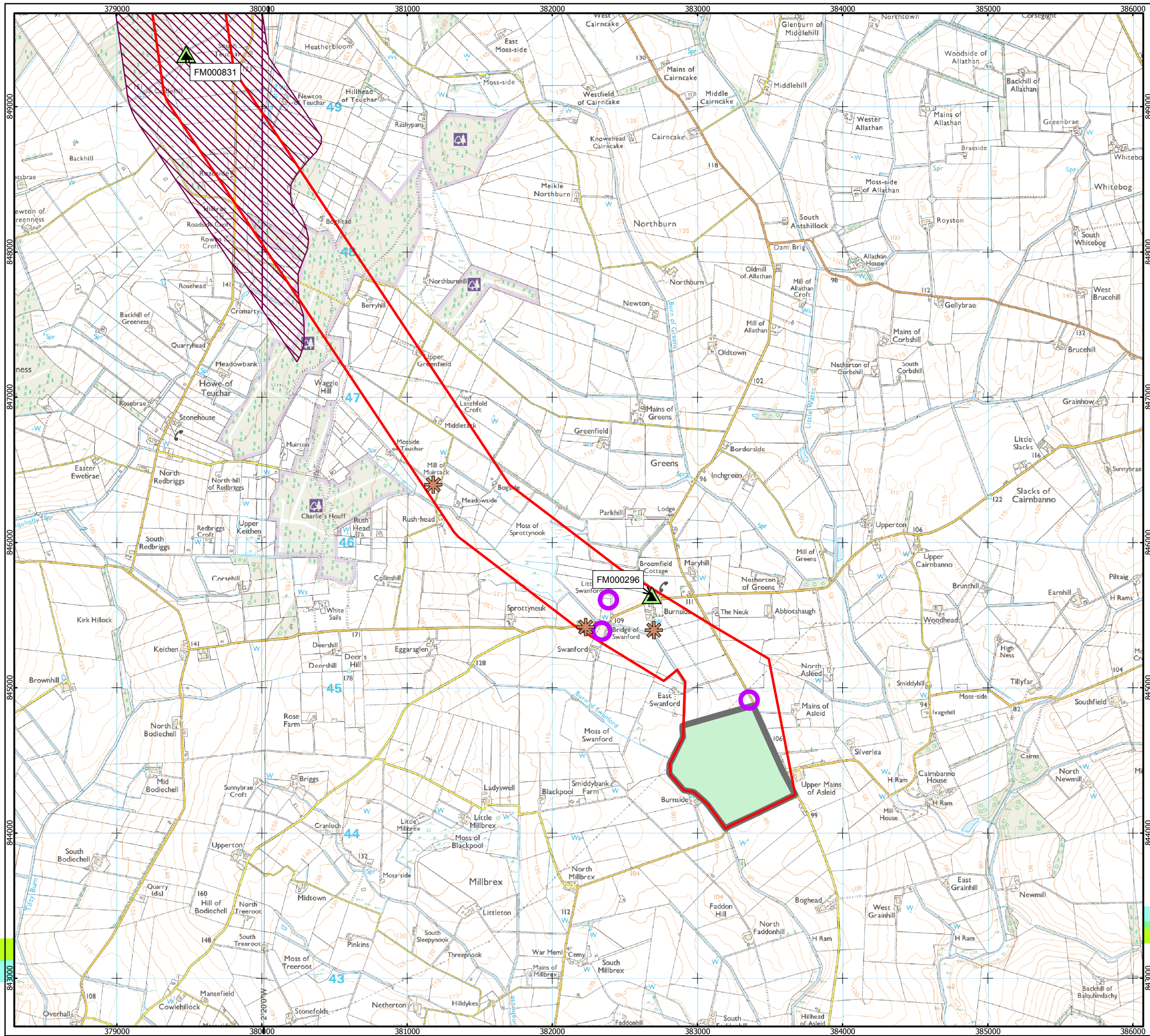
Produced: GP
 Reviewed: ES
 Approved: AH

Date: 23/06/2014 Revision: D
 REF: 8460001-PSO0041-ARP-MAP-012

Figure 3.2-4d
Potentially Contaminated Land

Moray Offshore
 Renewables Ltd

© Crown copyright and database rights 2014. Ordnance Survey [0100050437]. LANDMARK INFORMATION GROUP LIMITED licence number LIG/2014/56953837. Moray Offshore Renewables Ltd © 2014. This document is the property of contractors and sub-contractors and shall not be reproduced nor transmitted without prior written approval.



Moray Offshore Renewables Ltd

- KEY**
- Modified OnTI
 - Proposed Substation Area
 - Potentially Contaminated Sites (as identified by Aberdeenshire Council)**
 - ▲ Potentially slight/low contaminative risk to the Proposed Scheme
 - Discharge Consents**
 - CLASS**
 - ✳ Sewerage Discharge
 - BGS Recorded Mineral Sites
 - Potential Mining Area**
 - Rare: Infrequent minor mining may have occurred but restricted in extent

Horizontal Scale: 1:25,000 A3 Chart

 0 625 1,250 Meters

Geodetic Parameters: British National Grid

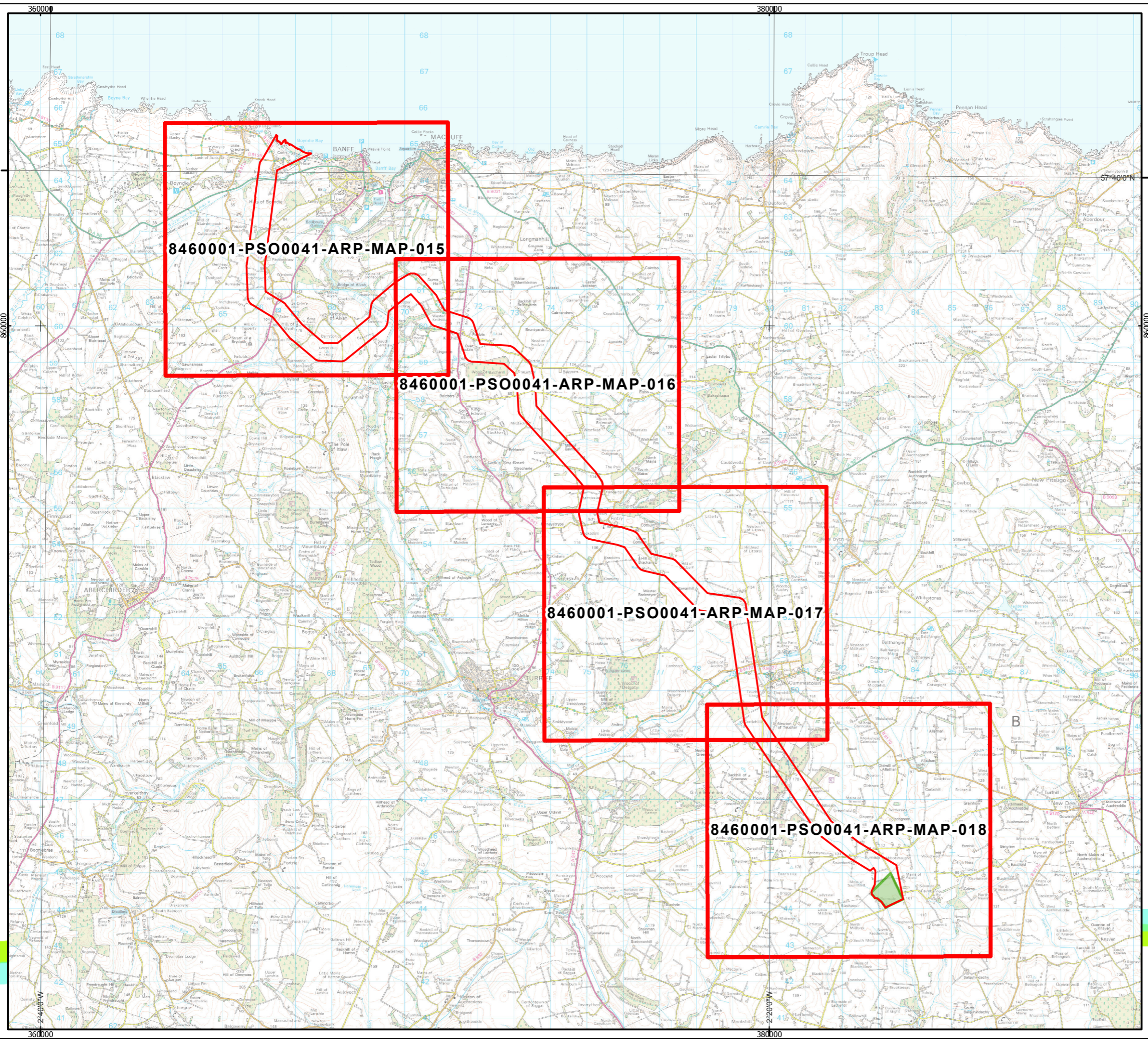
Produced: GP
 Reviewed: ES
 Approved: AH

Date: 23/06/2014 Revision: D
 REF: 8460001-PSO0041-ARP-MAP-013

Figure 3.2-4e
Potentially Contaminated Land

Moray Offshore
 Renewables Ltd

© Crown copyright and database rights 2014. Ordnance Survey [0100050437].
Moray Offshore Renewables Ltd © 2014. This document is the property of contractors and sub-contractors and shall not be reproduced nor transmitted without prior written approval.



Moray Offshore Renewables Ltd

- KEY**
- Modified OnTI
 - Proposed Substation Area

Horizontal Scale: 1:100,000 A3 Chart
0 2,500 5,000 Meters

Geodetic Parameters: British National Grid

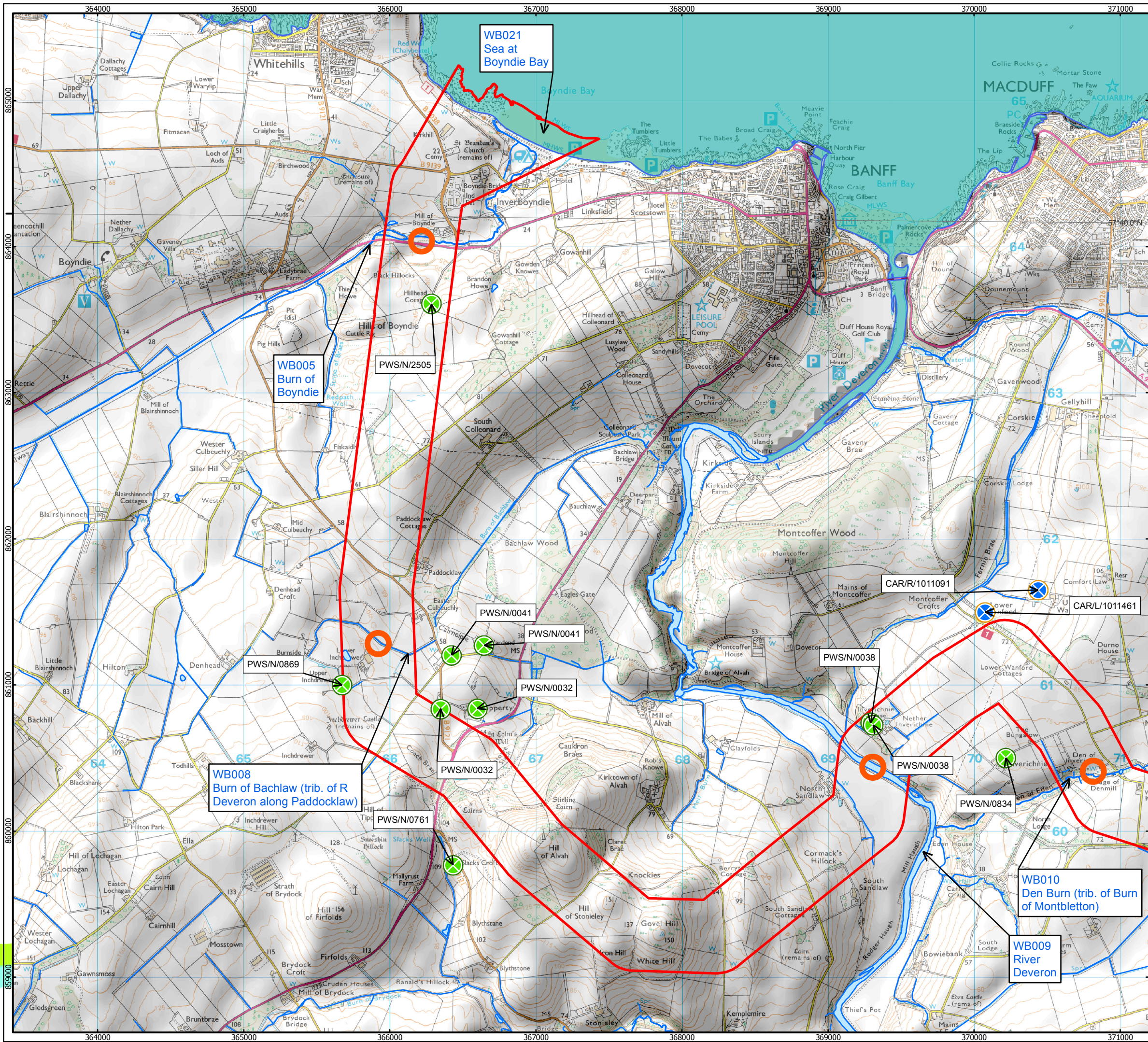
Produced: GP
Reviewed: ES
Approved: AH

Date: 17/06/2014 Revision: B
REF: 8460001-PSO0041-ARP-MAP-014

Figure 3.2-5a
Hydrology Index Map

Moray Offshore
Renewables Ltd

© Crown copyright and database rights 2014. Ordnance Survey [0100050437]. Moray Offshore Renewables Ltd © 2014. This document is the property of contractors and sub-contractors and shall not be reproduced nor transmitted without prior written approval.



Moray Offshore Renewables Ltd

- KEY**
- Modified OnTI
 - Proposed Substation Area
 - River Crossings
 - Private Water Supplies
 - Other Water Supplies
 - Tidal Water
 - Surface Watercourses & Waterbodies
 - CAR Licensed Surface Water and Groundwater Abstractions

Horizontal Scale: 1:25,000 A3 Chart
 0 630 1,260 Meters

Geodetic Parameters: British National Grid

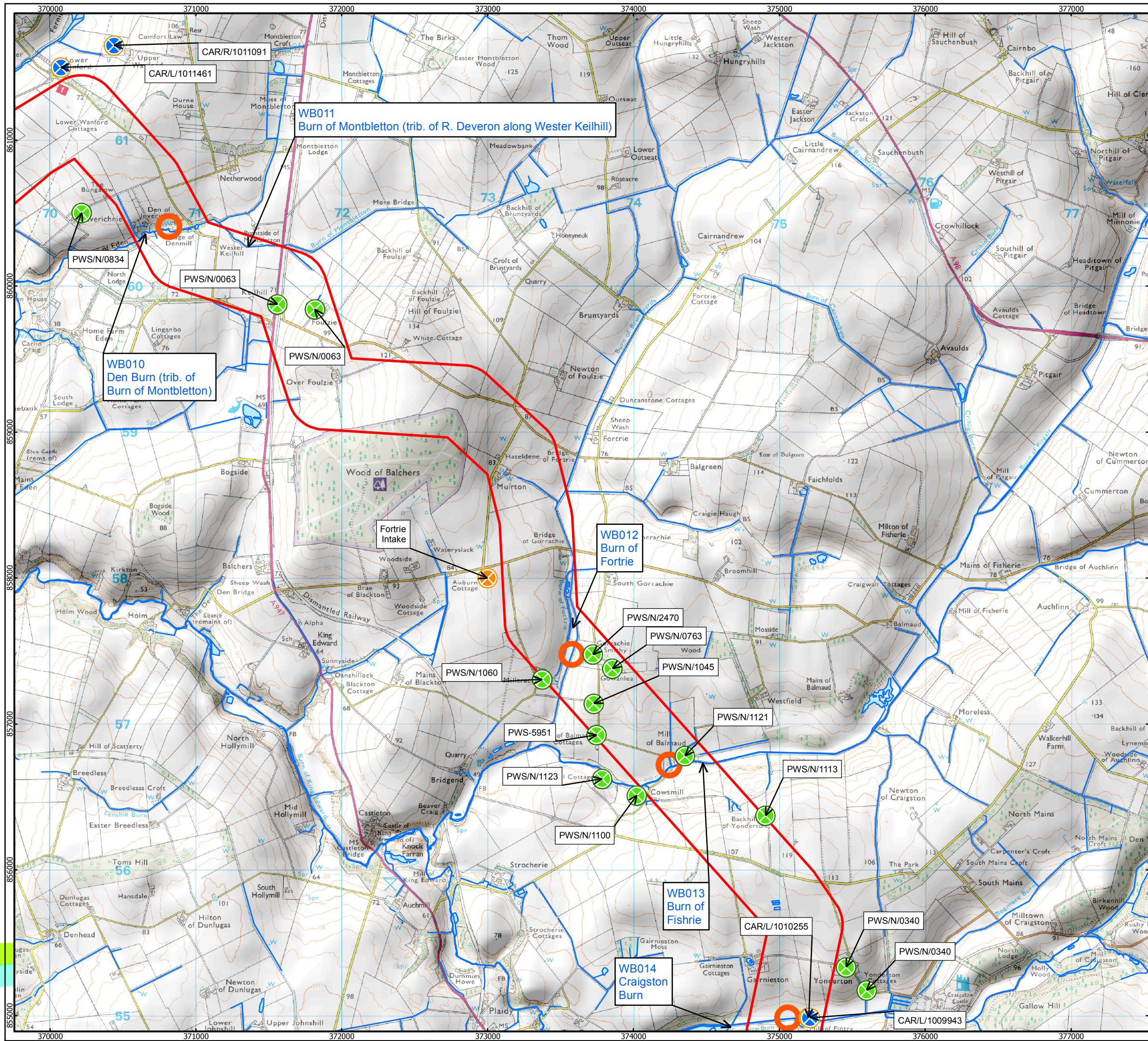
Produced: GP
 Reviewed: ES
 Approved: AH

Date: 23/06/2014 Revision: D
 REF: 8460001-PSO0041-ARP-MAP-015

Figure 3.2-5b
 Hydrology

Moray Offshore
 Renewables Ltd

© Crown copyright and database rights 2014. Ordnance Survey [0100050437]. Moray Offshore Renewables Ltd © 2014. This document is the property of contractors and sub-contractors and shall not be reproduced nor transmitted without prior written approval.



Moray Offshore Renewables Ltd

- KEY**
- Modified OnTI
 - Proposed Substation Area
 - River Crossings
 - Private Water Supplies
 - Other Water Supplies
 - Tidal Water
 - Surface Watercourses & Waterbodies
 - CAR Licensed Surface Water and Groundwater Abstractions

Horizontal Scale: 1:25,000 A3 Chart

 0 630 1,260 Meters

Geodetic Parameters: British National Grid

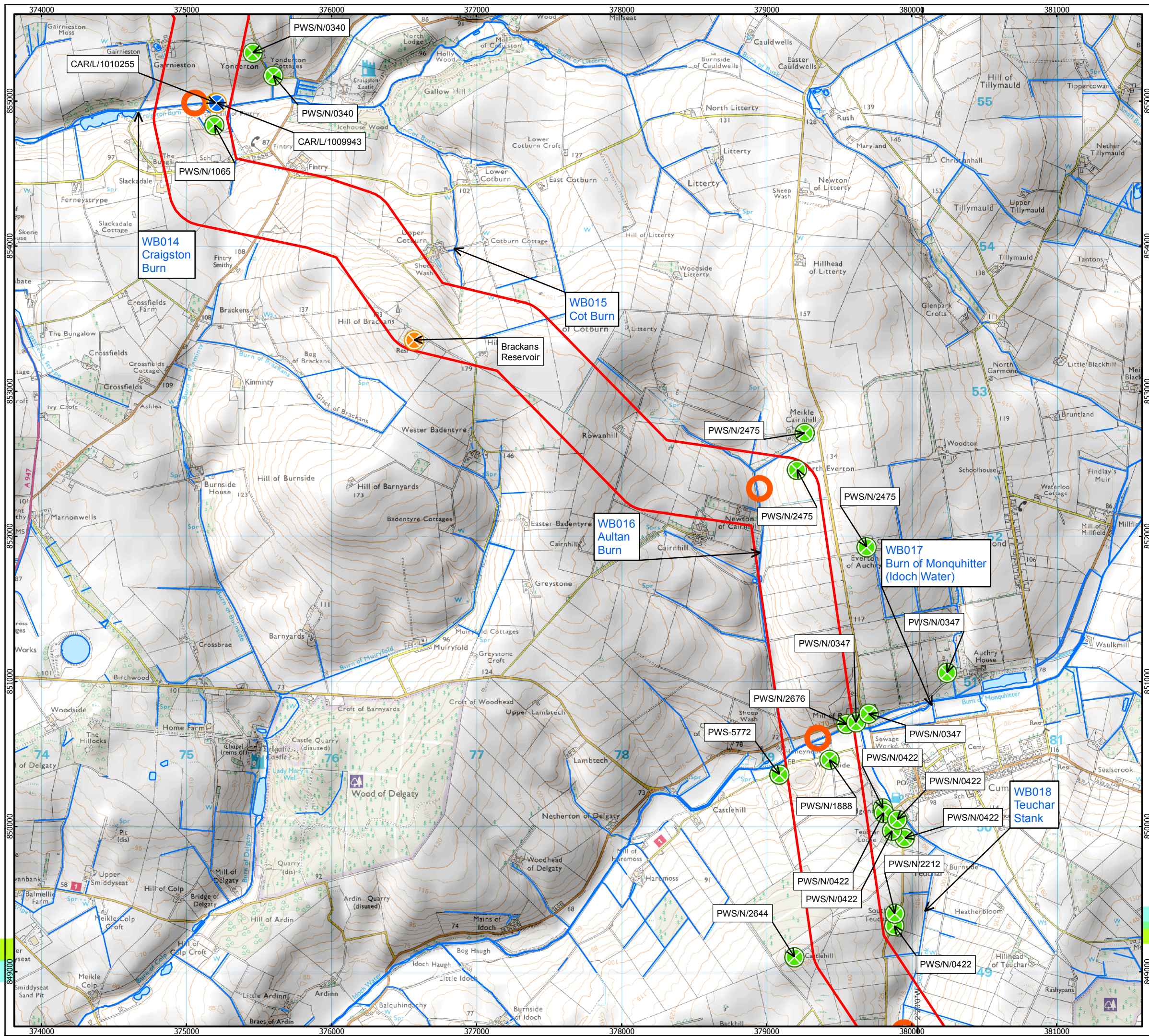
Produced: GP
 Reviewed: ES
 Approved: AH

Date: 23/06/2014 Revision: D
 REF: 8460001-PS00041-ARP-MAP-016

Figure 3.2-5c
 Hydrology

Moray Offshore
 Renewables Ltd

© Crown copyright and database rights 2014. Ordnance Survey [0100050437]. Moray Offshore Renewables Ltd © 2014. This document is the property of contractors and sub-contractors and shall not be reproduced nor transmitted without prior written approval.



Moray Offshore Renewables Ltd

- KEY**
- Modified OnTI
 - Proposed Substation Area
 - River Crossings
 - Private Water Supplies
 - Other Water Supplies
 - Tidal Water
 - Surface Watercourses & Waterbodies
 - CAR Licensed Surface Water and Groundwater Abstractions

Horizontal Scale: 1:25,000 A3 Chart
 0 630 1,260 Meters

Geodetic Parameters: British National Grid

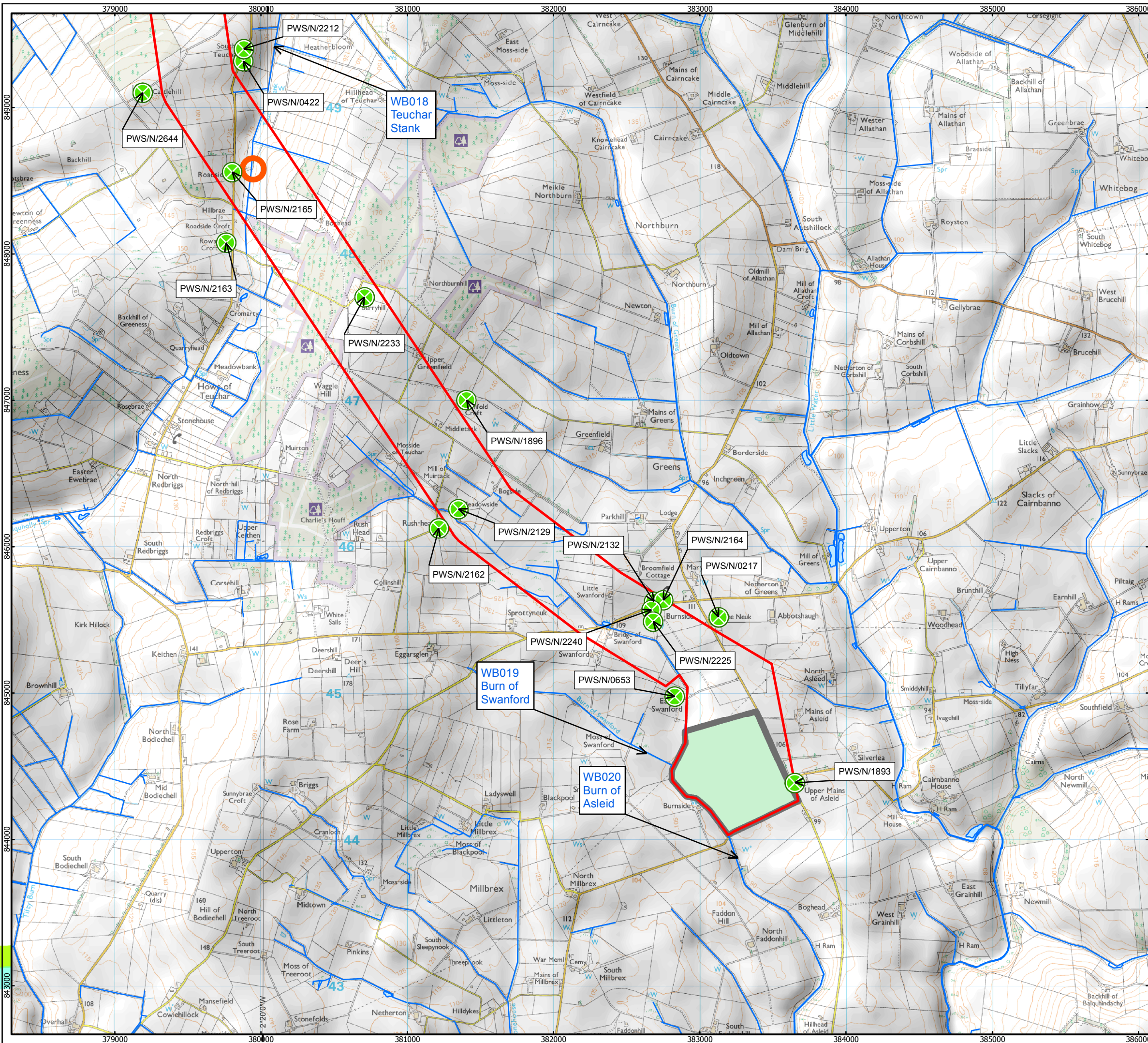
Produced: GP
 Reviewed: ES
 Approved: AH

Date: 23/06/2014 Revision: D
 REF: 8460001-PSO0041-ARP-MAP-017

Figure 3.2-5d
Hydrology

Moray Offshore
Renewables Ltd

© Crown copyright and database rights 2014. Ordnance Survey [0100050437]. Moray Offshore Renewables Ltd © 2014. This document is the property of contractors and sub-contractors and shall not be reproduced nor transmitted without prior written approval.



Moray Offshore Renewables Ltd

- KEY**
- Modified OnTI
 - Proposed Substation Area
 - River Crossings
 - Private Water Supplies
 - Other Water Supplies
 - Tidal Water
 - Surface Watercourses & Waterbodies
 - CAR Licensed Surface Water and Groundwater Abstractions

Horizontal Scale: 1:25,000 A3 Chart

 0 630 1,260 Meters

Geodetic Parameters: British National Grid
 Produced: GP
 Reviewed: ES
 Approved: AH
 Date: 23/06/2014 Revision: D
 REF: 8460001-PS00041-ARP-MAP-018

Figure 3.2-5e
Hydrology

Moray Offshore
Renewables Ltd