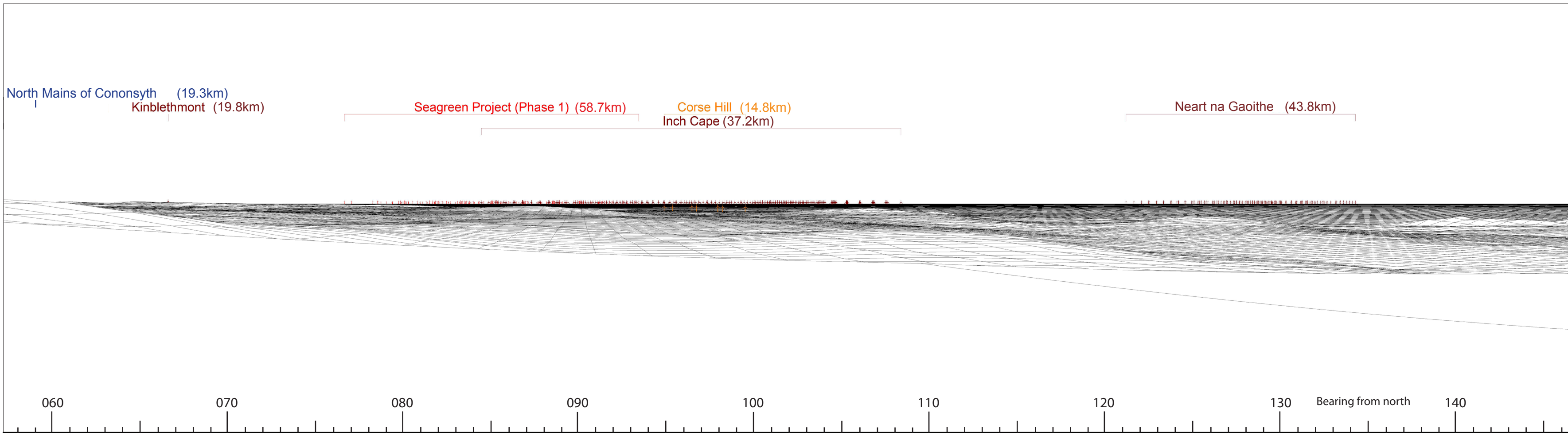




Existing View



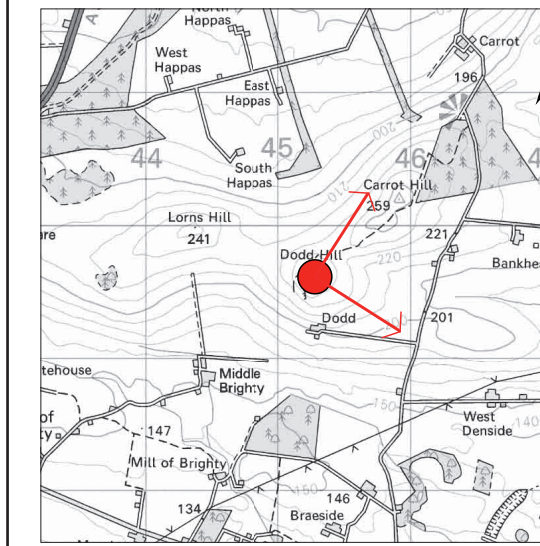
Cumulative Wireframe



Firth of Forth Offshore Wind Farm

Figure 16.51A

Viewpoint Location Map



Cumulative Viewpoint 9  
Dodd Hill  
Existing View and Wireframe

Viewpoint Information

Date of photograph: 14.09.11

OS Reference: 345255, 739616

Viewpoint height: 251m AOD

Direction from site: W

Angle of view: 90 degrees

Correct viewing distance: 300mm

Drawn by: AM

Checked by: RS

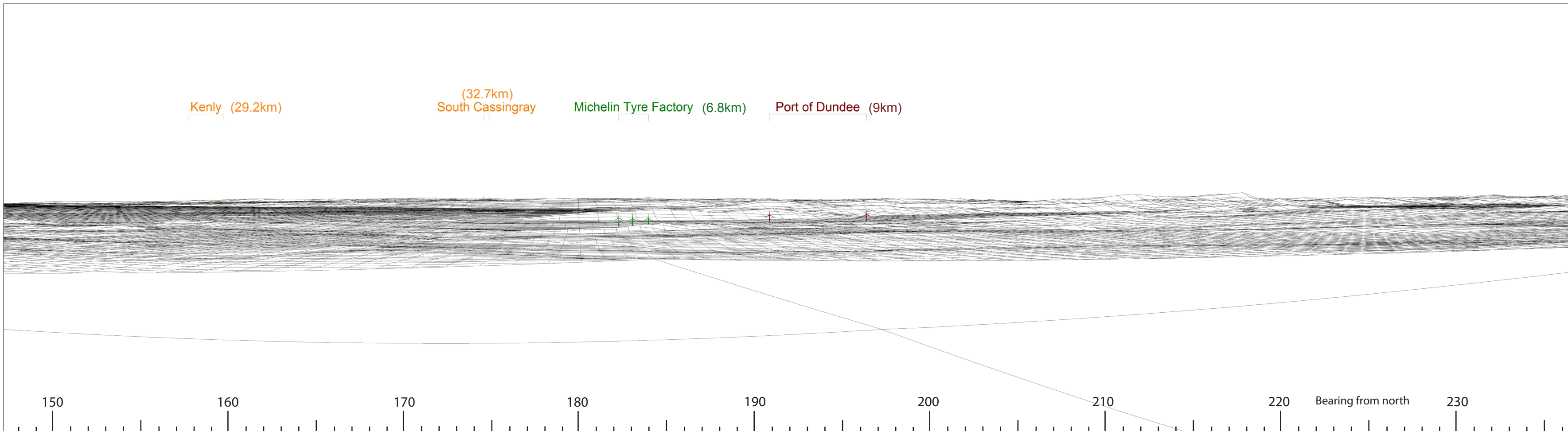
Date: 22.06.2012

Drawing no:  
YOR.1966.008





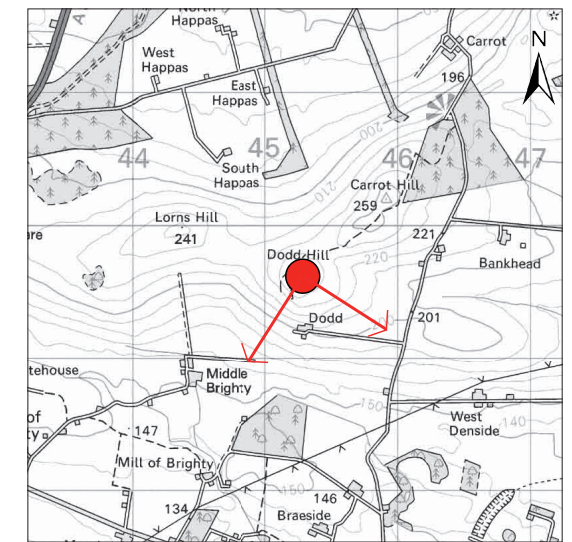
Existing View



Cumulative Wireframe

Figure 16.51B

Viewpoint Location Map



Cumulative Viewpoint 9  
Dodd Hill  
Existing View and Wireframe

Viewpoint Information

Date of photograph: 14.09.11  
 OS Reference: 345255, 739616  
 Viewpoint height: 251m AOD  
 Angle of view: 90 degrees  
 Correct viewing distance: 300mm

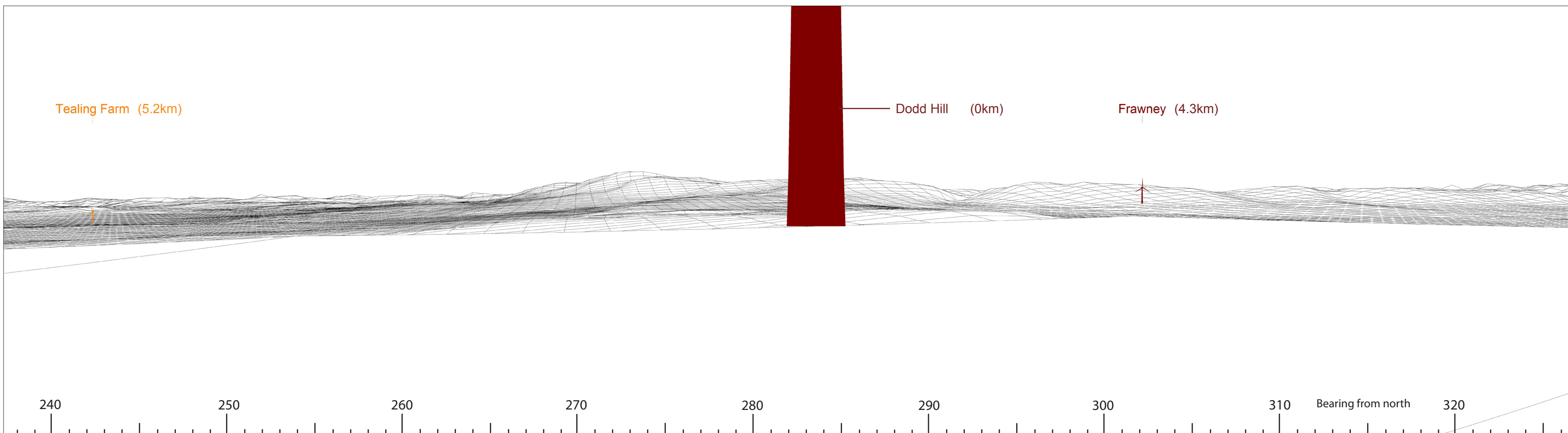
Drawn by: AM      Checked by: RS

Date: 01.05.2012      Drawing no: YOR.1966.008





Existing View



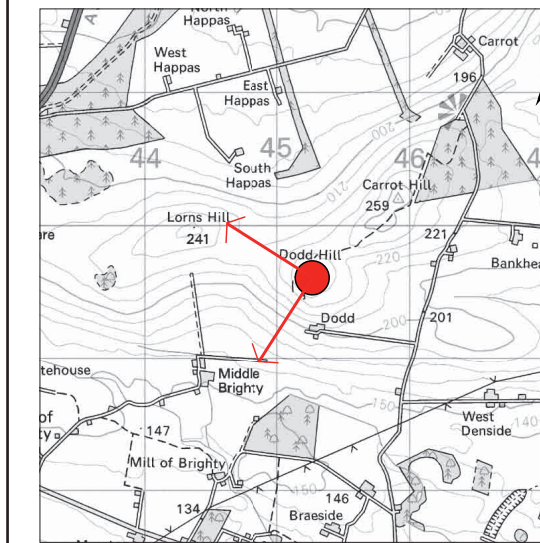
Cumulative Wireframe



Firth of Forth Offshore Wind Farm

Figure 16.51C

Viewpoint Location Map



Cumulative Viewpoint 9  
Dodd Hill  
Existing View and Wireframe

Viewpoint Information

Date of photograph: 14.09.11

OS Reference: 345255, 739616

Viewpoint height: 251m AOD

Angle of view: 90 degrees

Correct viewing distance: 300mm

Drawn by: AM

Checked by: RS

Date: 01.05.2012

Drawing no:  
YOR.1966.008





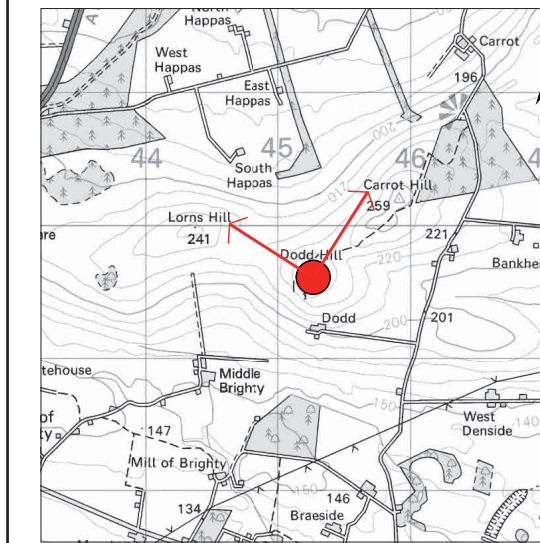
Existing View



Firth of Forth Offshore Wind Farm

Figure 16.51D

Viewpoint Location Map



Cumulative Viewpoint 9  
Dodd Hill  
Existing View and Wireframe

Viewpoint Information

Date of photograph: 14.09.11

OS Reference: 345255, 739616

Viewpoint height: 251m AOD

Angle of view: 90 degrees

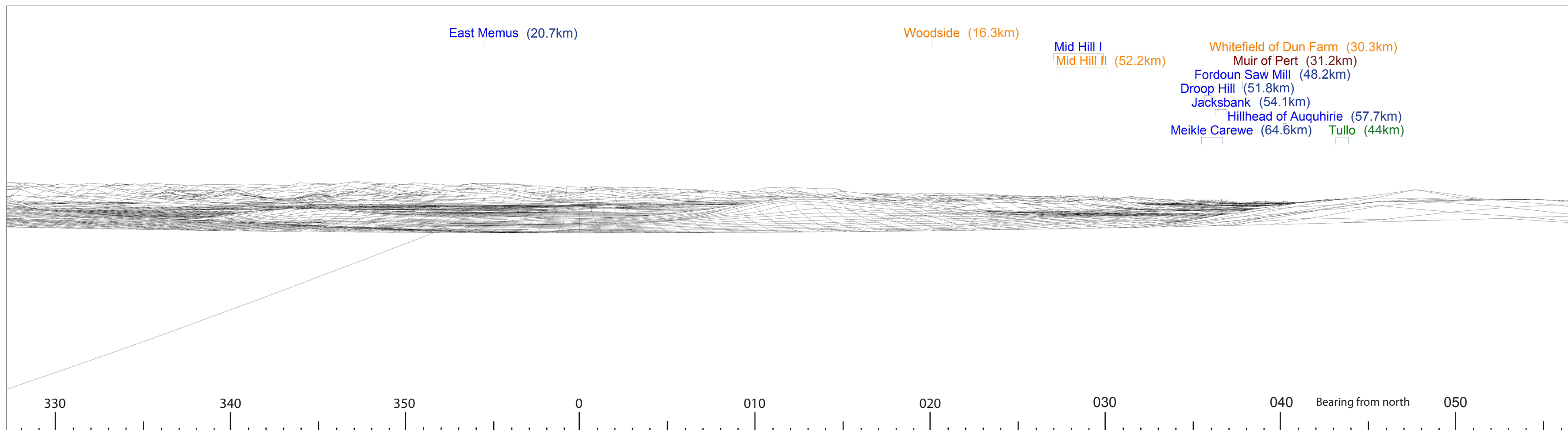
Correct viewing distance: 300mm

Drawn by: AM

Checked by: RS

Date: 01.05.2012

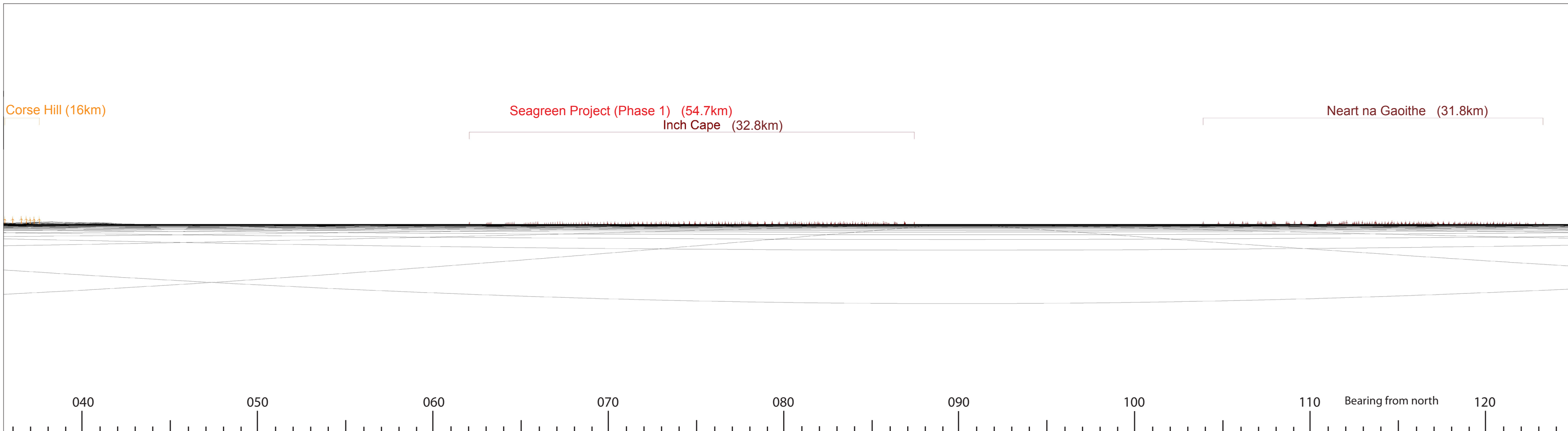
Drawing no:  
YOR.1966.008



Cumulative Wireframe



Existing View



Cumulative Wireframe



Firth of Forth Offshore Wind Farm

Figure 16.52A

Viewpoint Location Map



Cumulative Viewpoint 10  
Tentsmuir  
Existing View and Wireframe

Viewpoint Information

Date of photograph: 22.07.11

OS Reference: 350325, 724227

Viewpoint height: 0m AOD

Direction from site: WSW

Angle of view: 90 degrees

Correct viewing distance: 300mm

Drawn by: AM

Checked by: RS

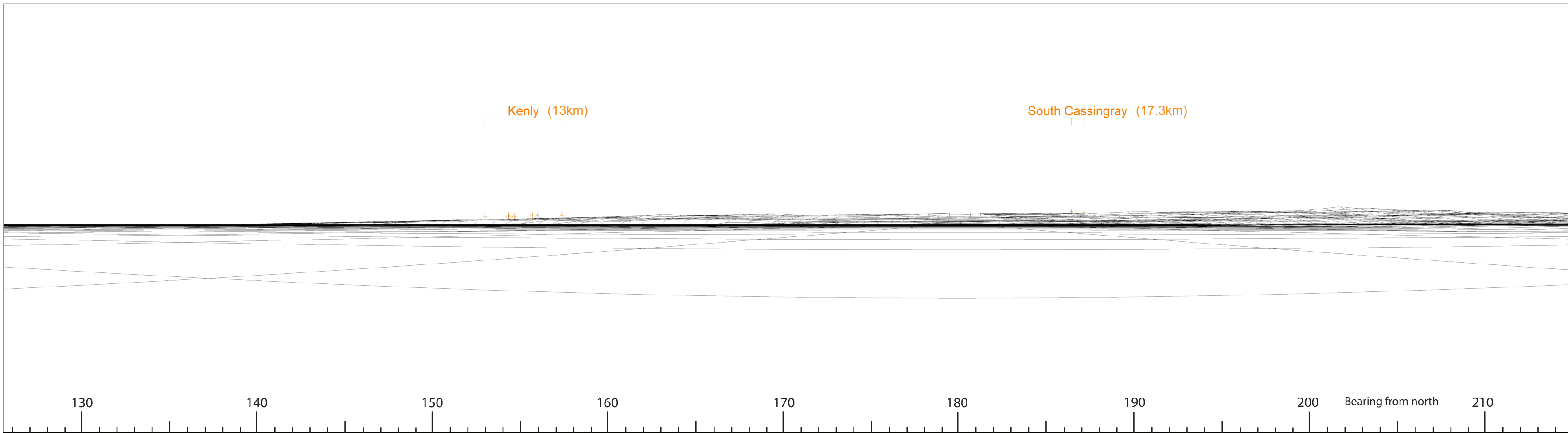
Date: 22.06.2012

Drawing no:  
YOR.1966.008





Existing View



Cumulative Wireframe



Firth of Forth Offshore Wind Farm

Figure 16.52B

Viewpoint Location Map



Cumulative Viewpoint 10  
Tentsmuir  
Existing View and Wireframe

Viewpoint Information

Date of photograph: 22.07.11

OS Reference: 350325, 724227

Viewpoint height: 0m AOD

Angle of view: 90 degrees

Correct viewing distance: 300mm

Drawn by: AM

Checked by: RS

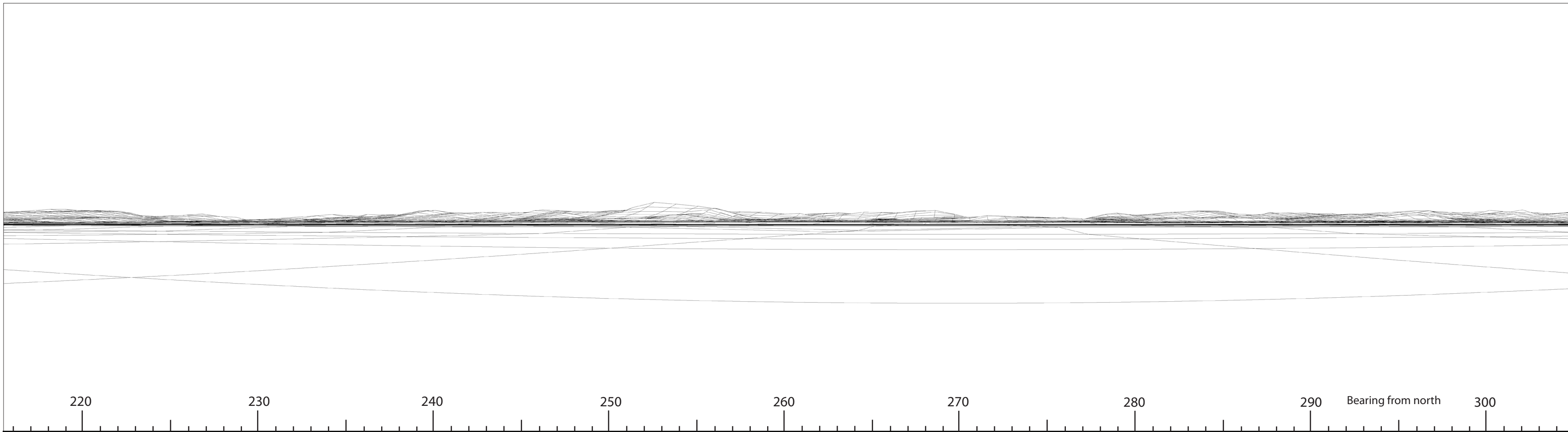
Date: 01.05.2012

Drawing no:  
YOR.1966.008





Existing View



Cumulative Wireframe



Firth of Forth Offshore Wind Farm

Figure 16.52C

Viewpoint Location Map



Cumulative Viewpoint 10  
Tentsmuir  
Existing View and Wireframe

Viewpoint Information

Date of photograph: 22.07.11

OS Reference: 350325, 724227

Viewpoint height: 0m AOD

Angle of view: 90 degrees

Correct viewing distance: 300mm

Drawn by: AM

Checked by: RS

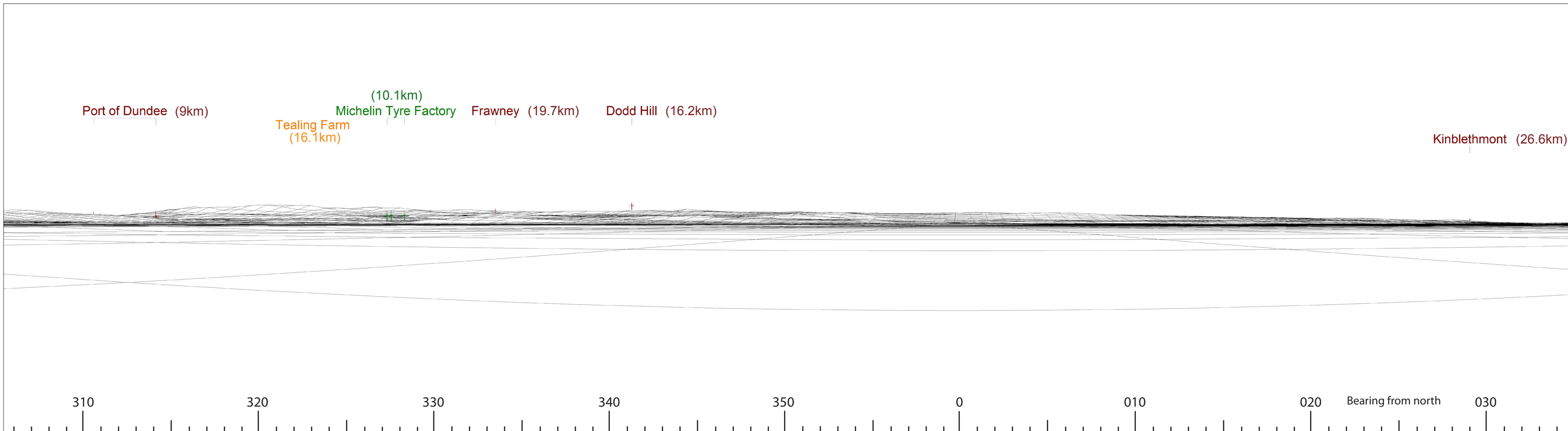
Date: 01.05.2012

Drawing no:  
YOR.1966.008





Existing View



Cumulative Wireframe



Firth of Forth Offshore Wind Farm

Figure 16.52D

Viewpoint Location Map



Cumulative Viewpoint 10  
Tentsmuir  
Existing View and Wireframe

Viewpoint Information

Date of photograph: 22.07.11

OS Reference: 350325, 724227

Viewpoint height: 0m AOD

Angle of view: 90 degrees

Correct viewing distance: 300mm

Drawn by: AM

Checked by: RS

Date: 01.05.2012

Drawing no:  
YOR.1966.008

