

**Beatrice Offshore Windfarm
Environmental Statement Addendum**

Annex 7A Population Model Outputs

ANNEX 7A: POPULATION MODEL OUTPUTS

Figure 1: Fulmar - Displacement

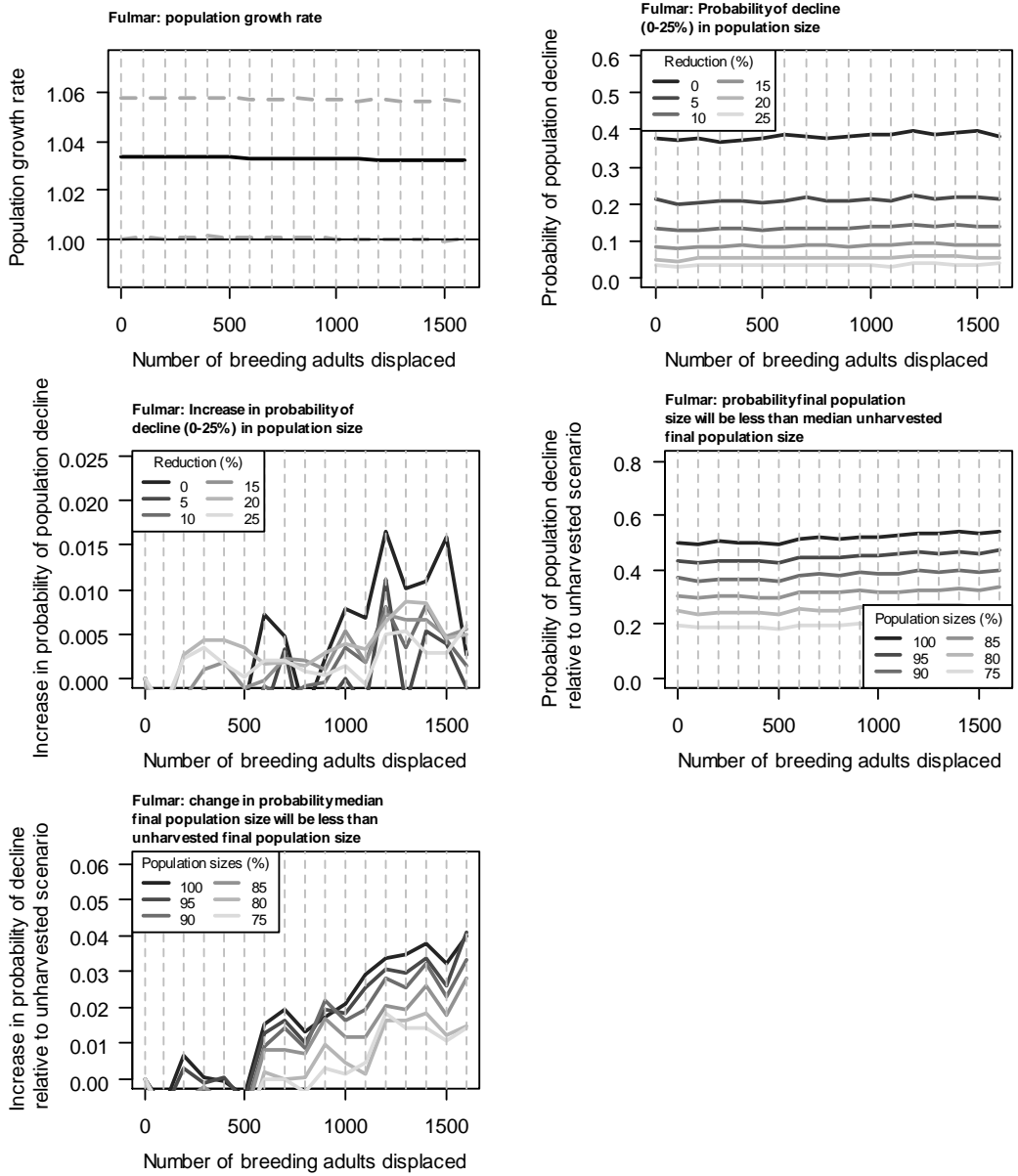


Figure 2: Gannet - Displacement

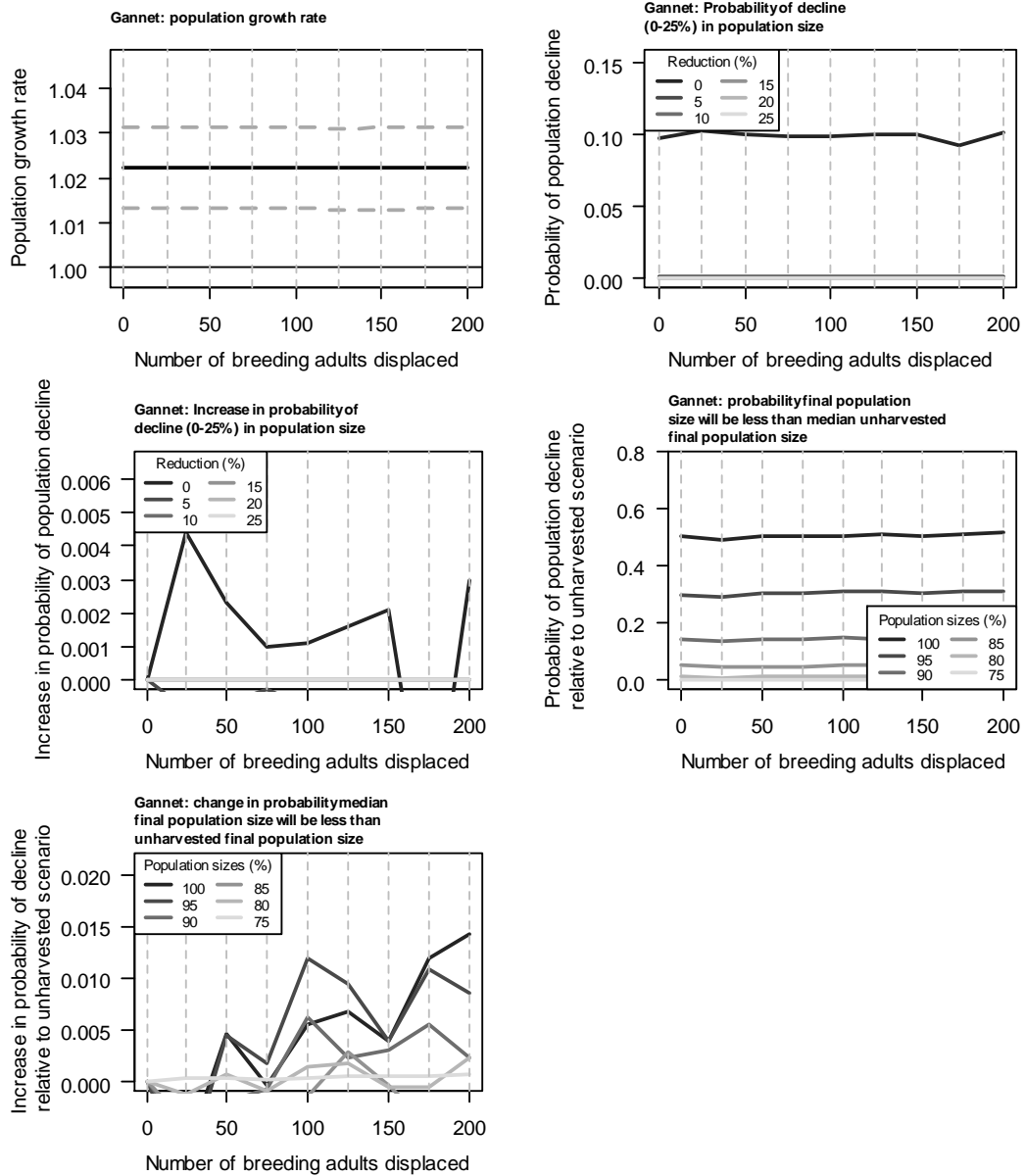


Figure 3: Kittiwake – Displacement

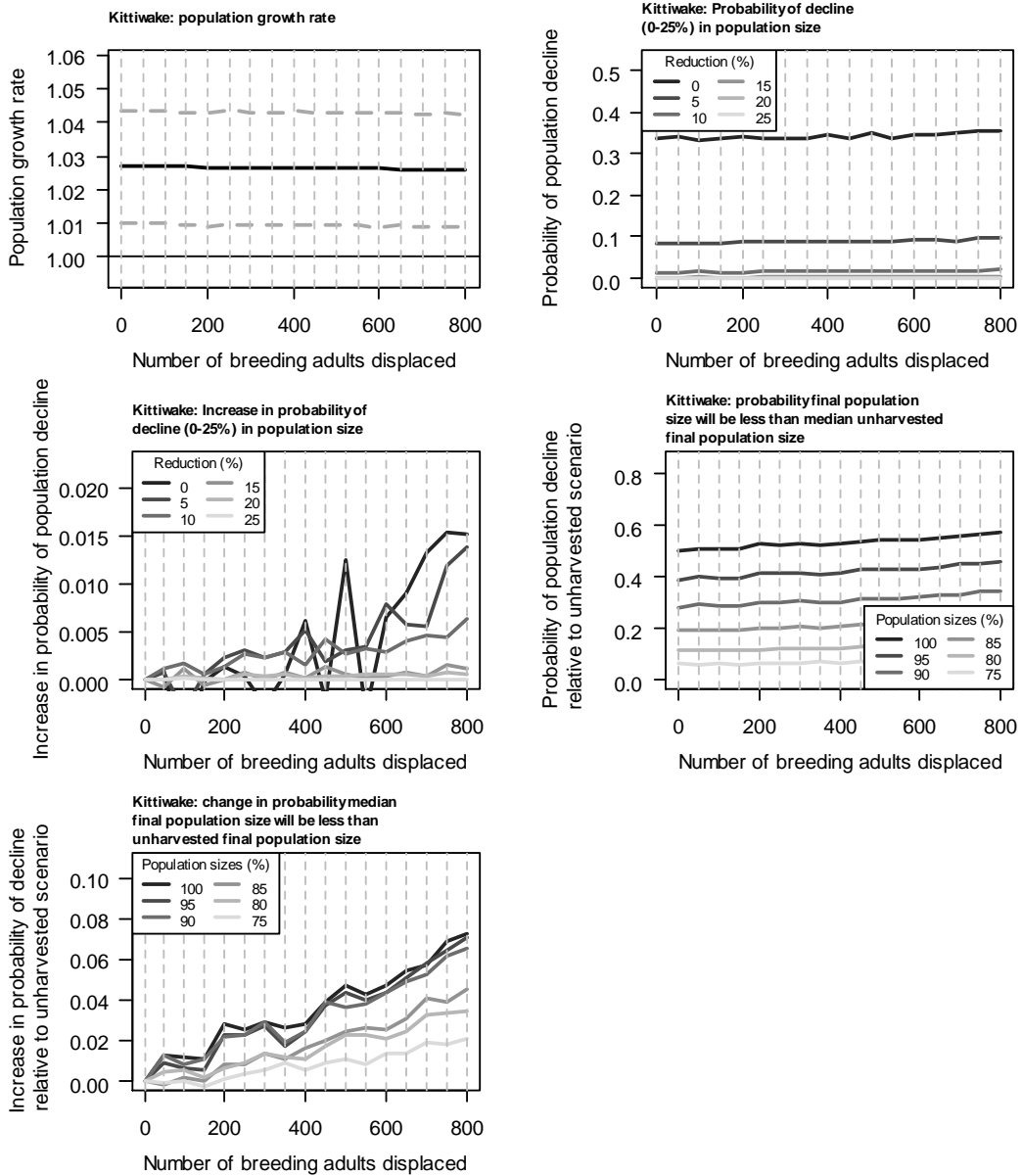


Figure 4: Guillemot – Displacement

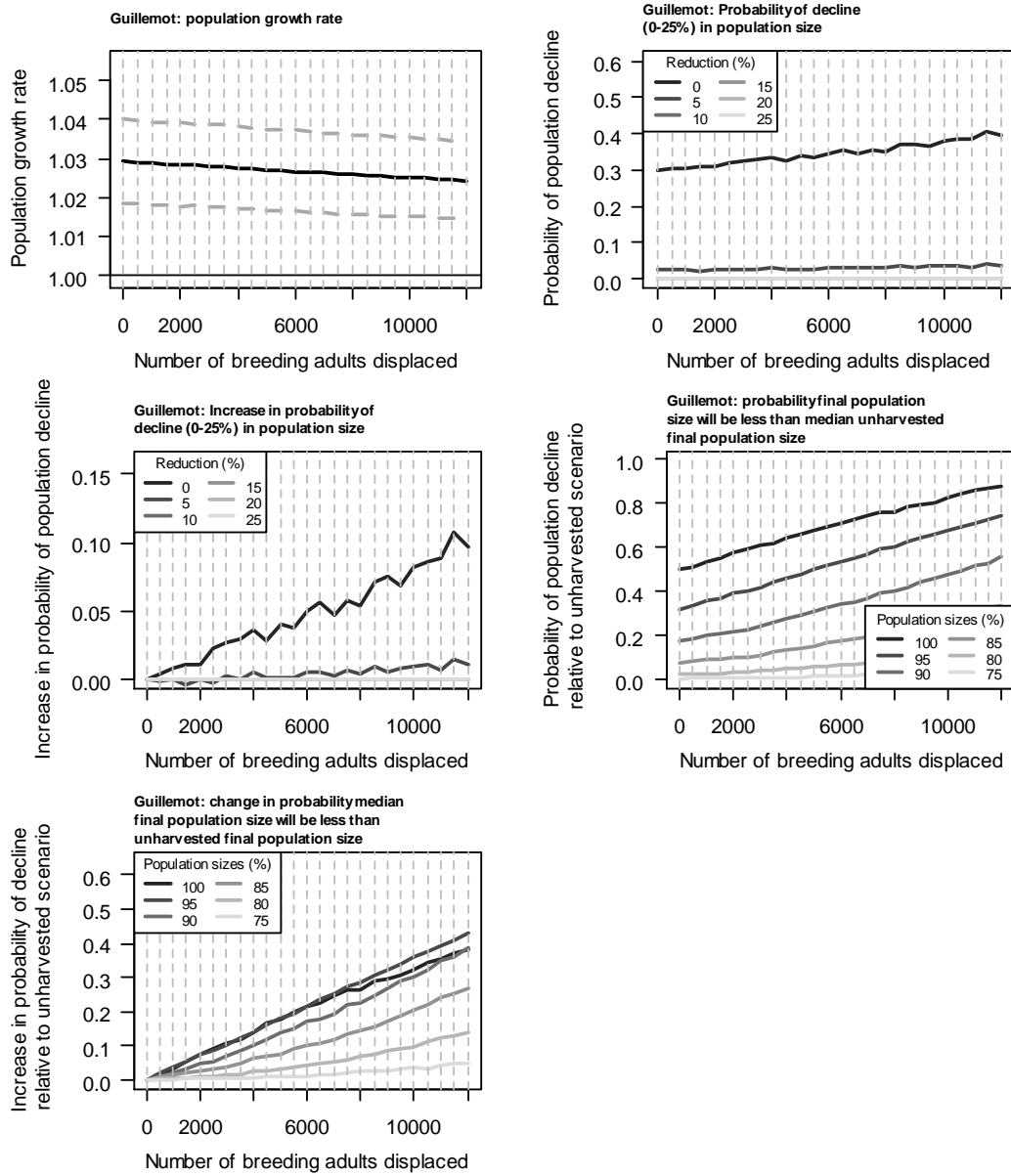


Figure 5: Razorbill - Displacement

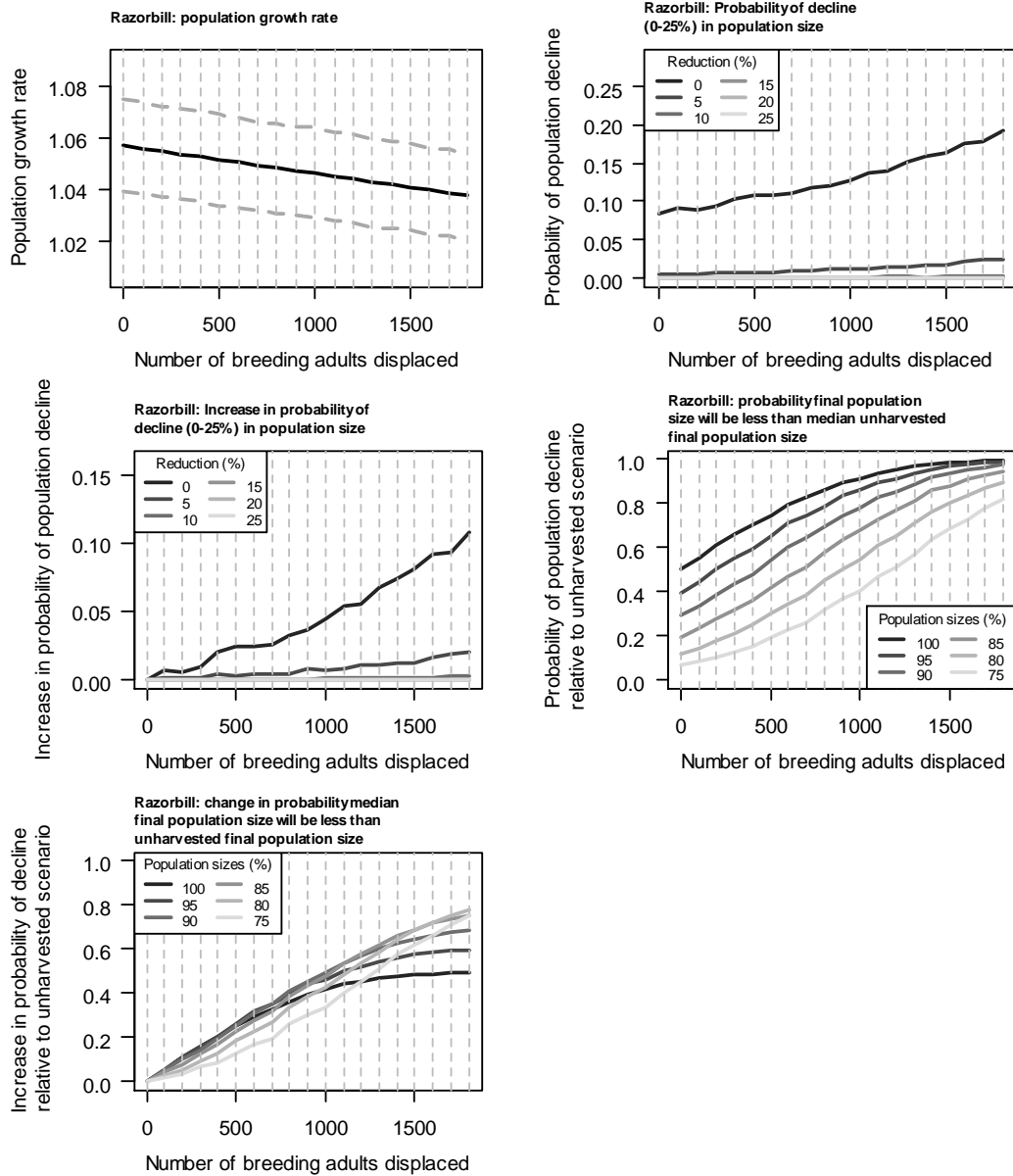


Figure 6: Puffin – Displacement

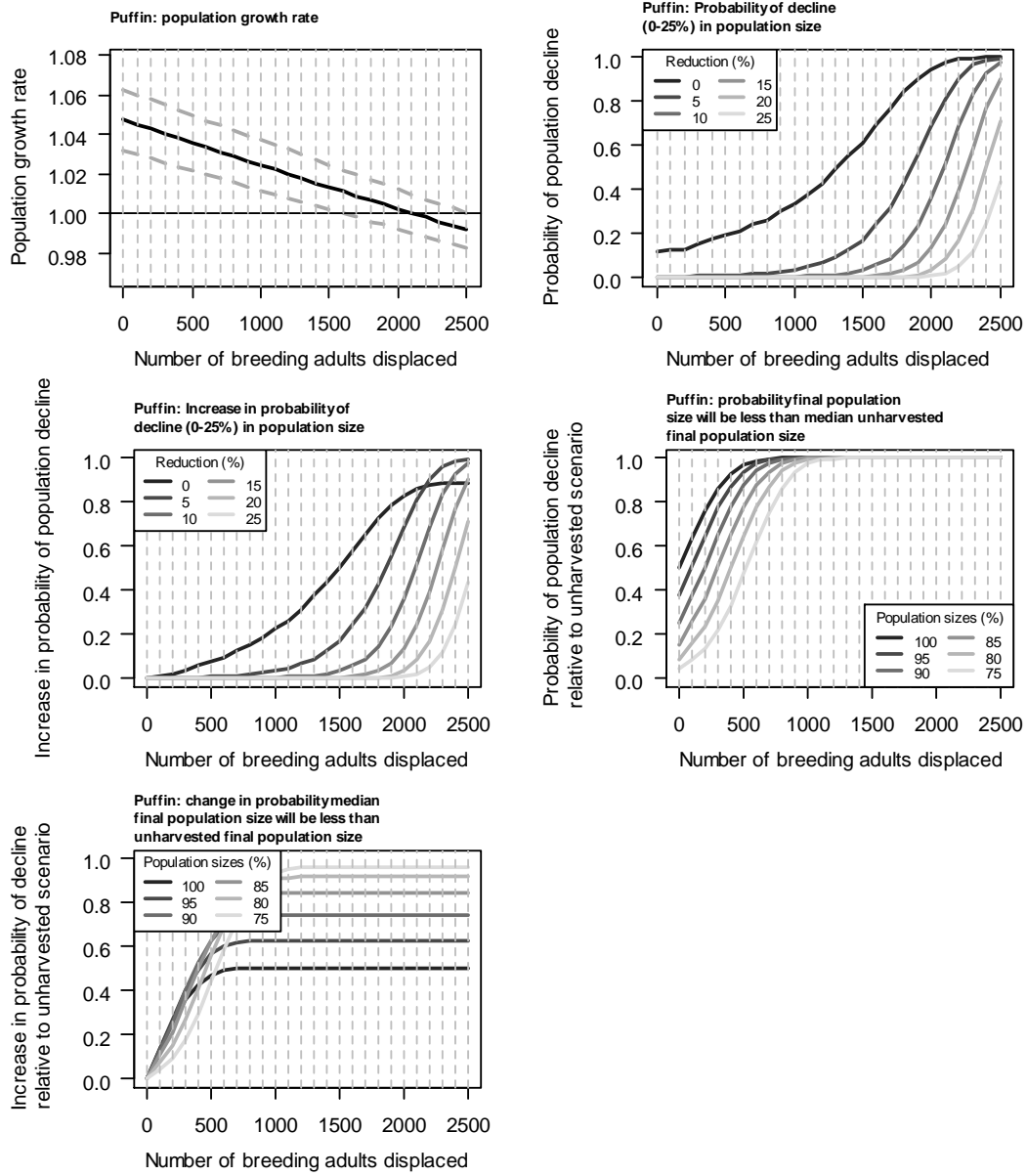


Figure 7: Fulmar – Collision (Breeding Season)

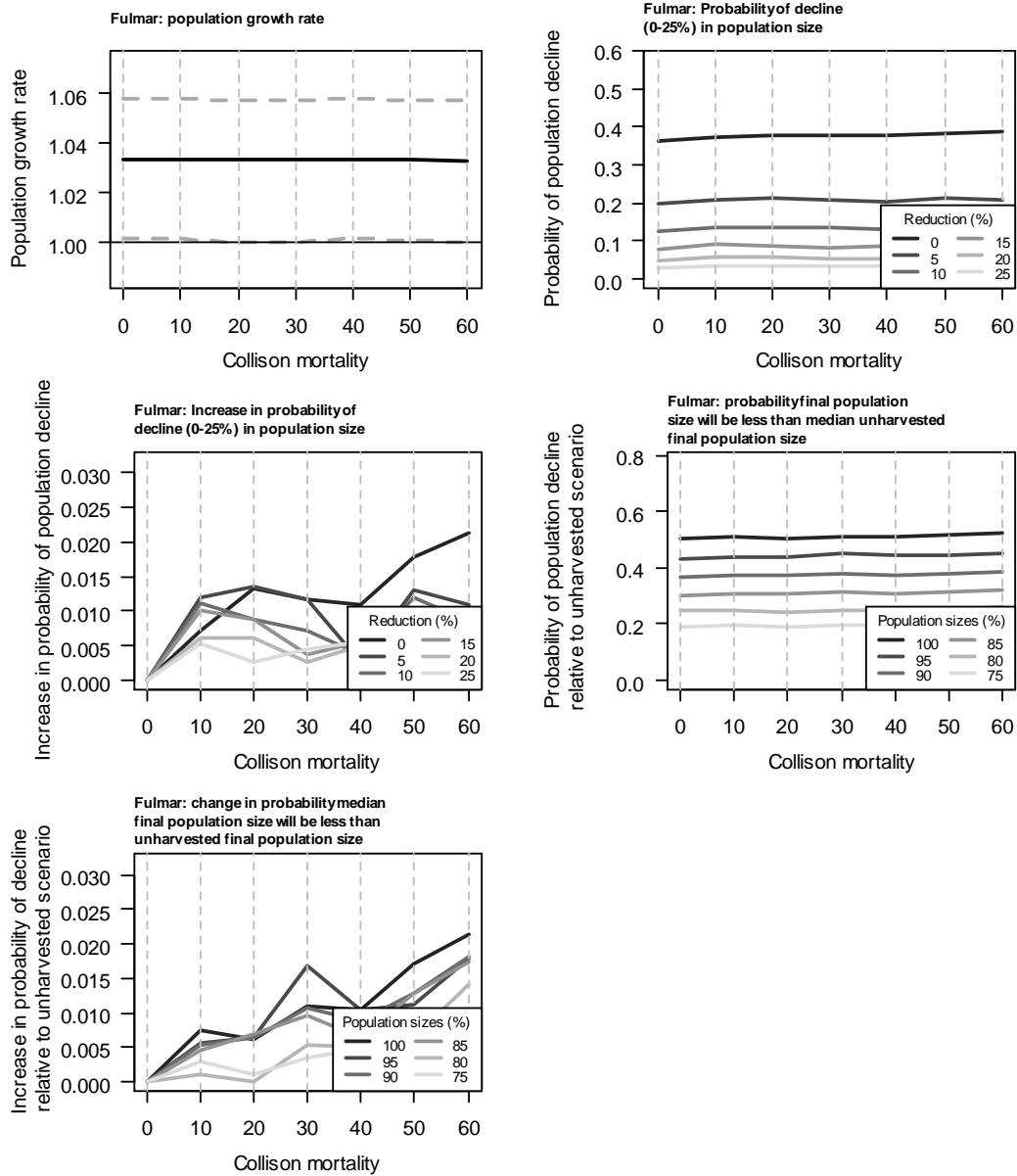


Figure 8: Gannet – Collision (Breeding Season)

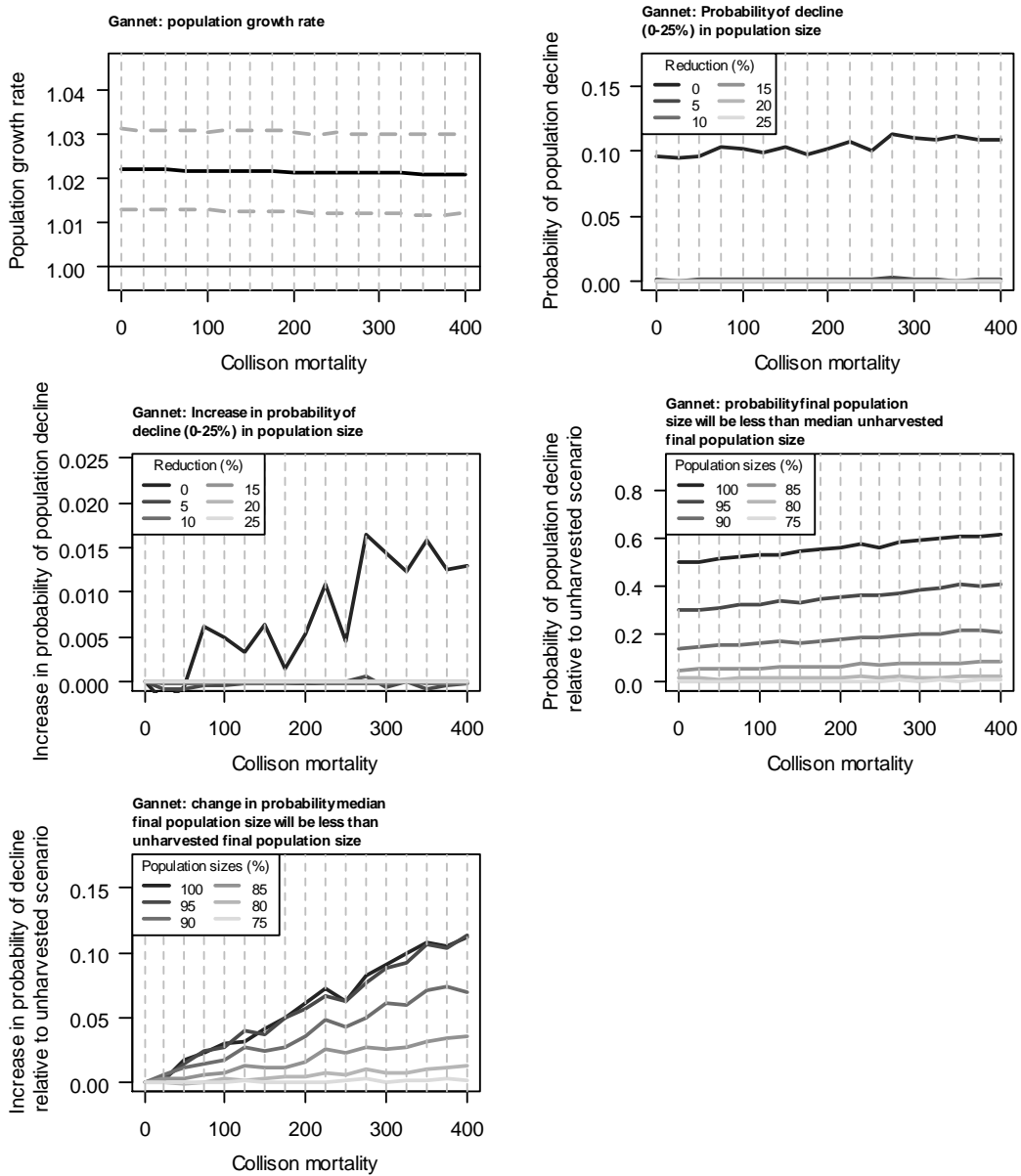


Figure 9: Kittiwake – Collision (Breeding Season)

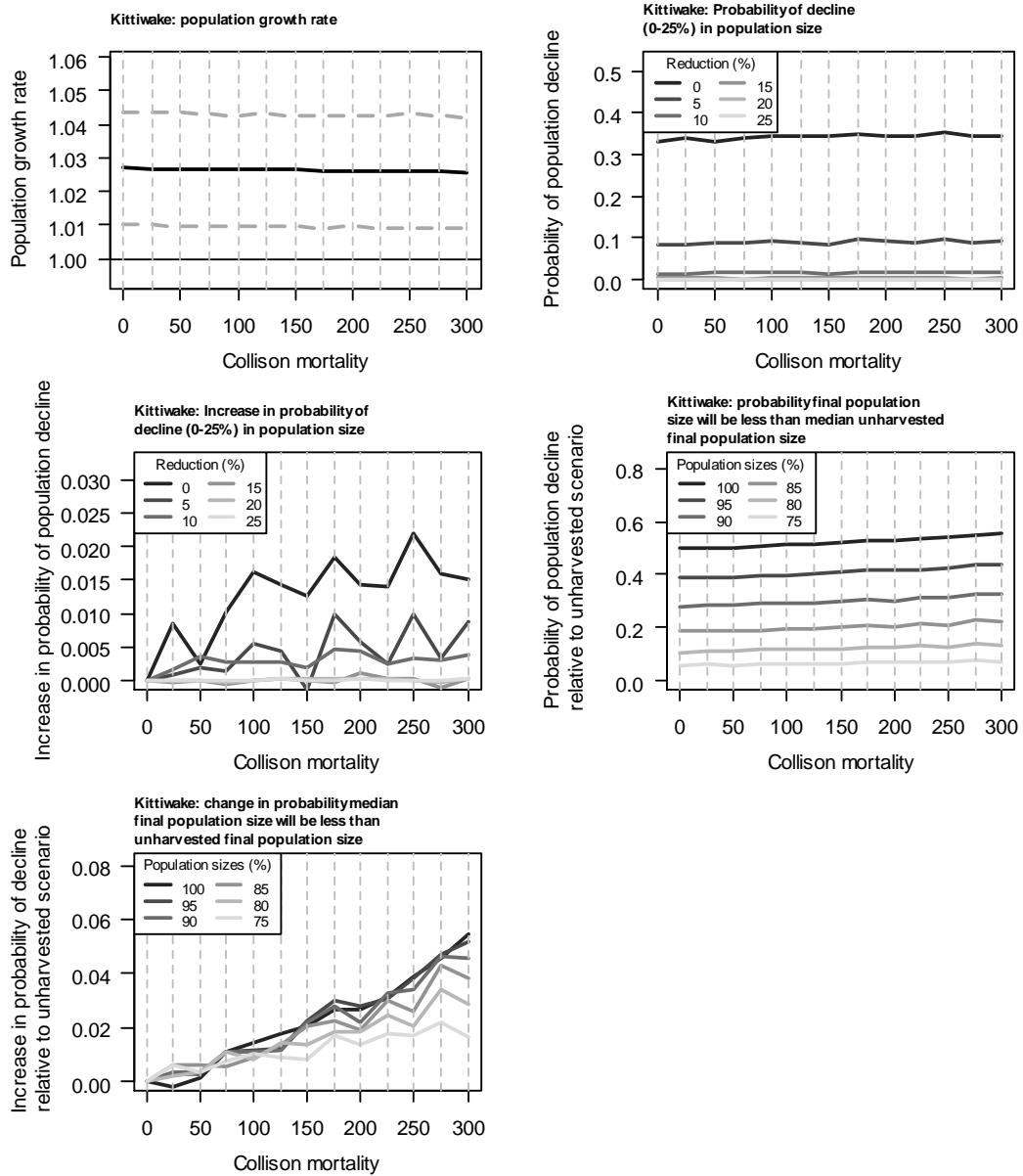


Figure 10: Herring Gull – Collision (Breeding Season)

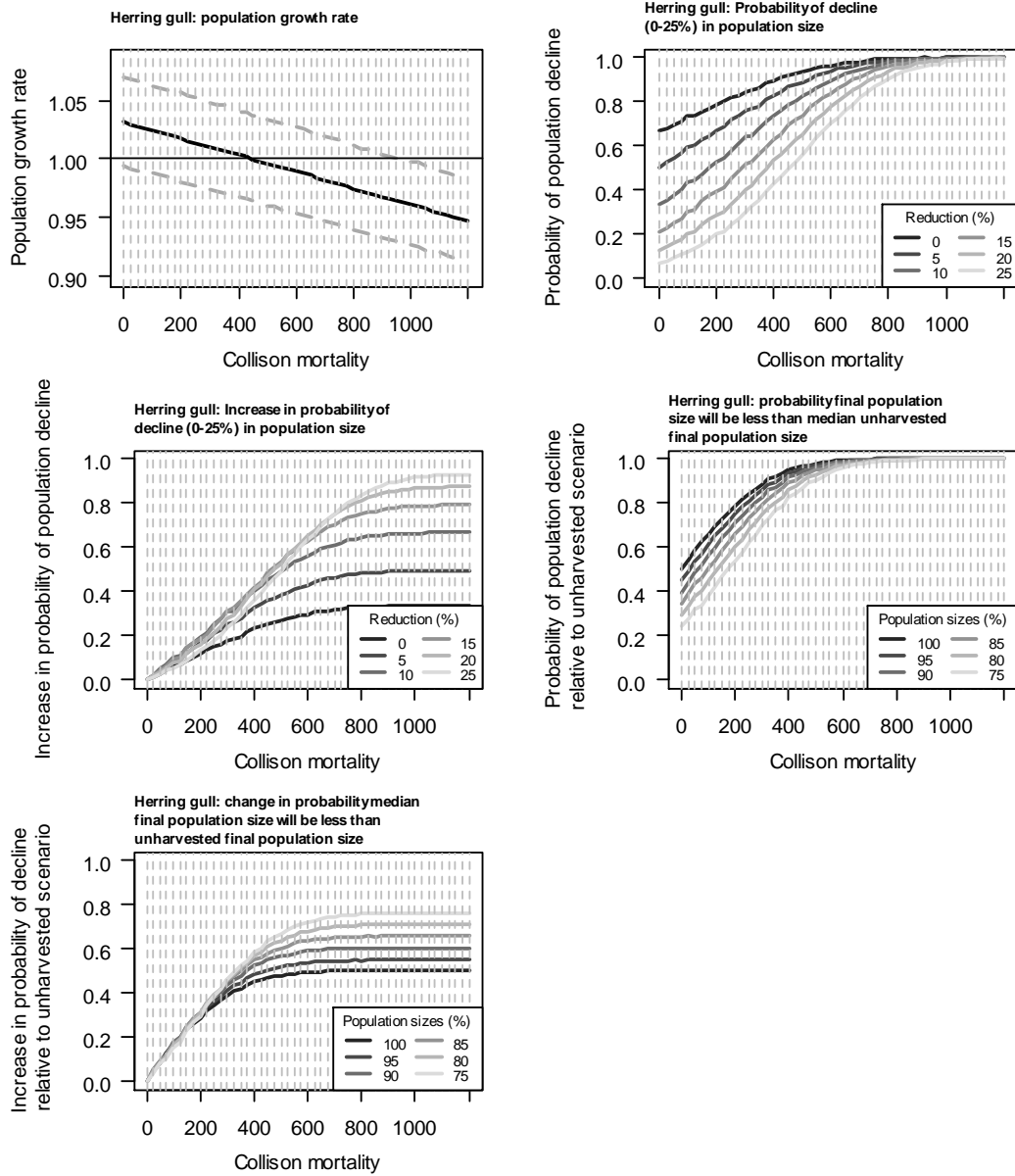


Figure 11: Great Black-Backed Gull – Collision (Breeding Season)

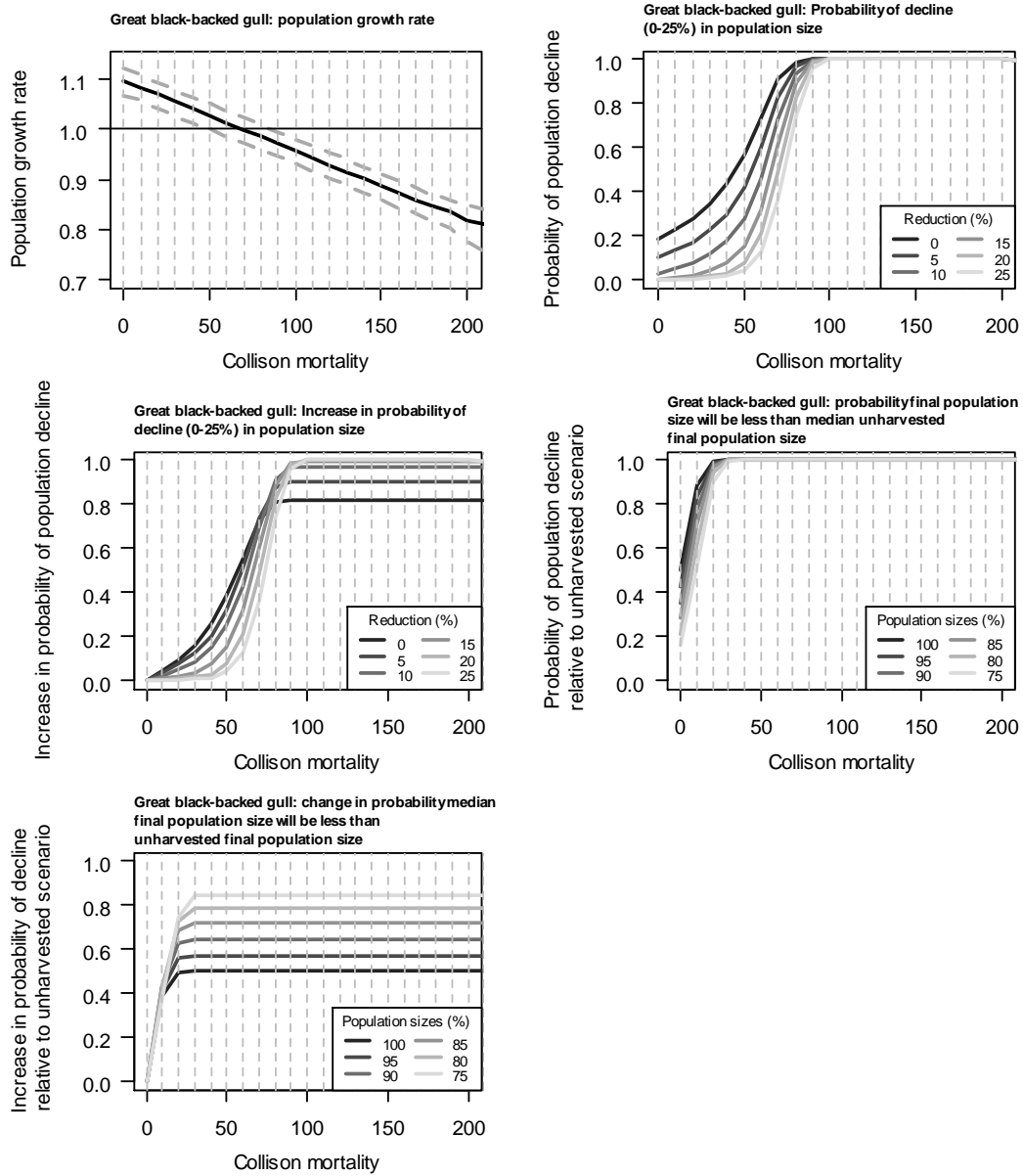


Figure 12: Herring Gull – Collision (Non-Breeding Season)

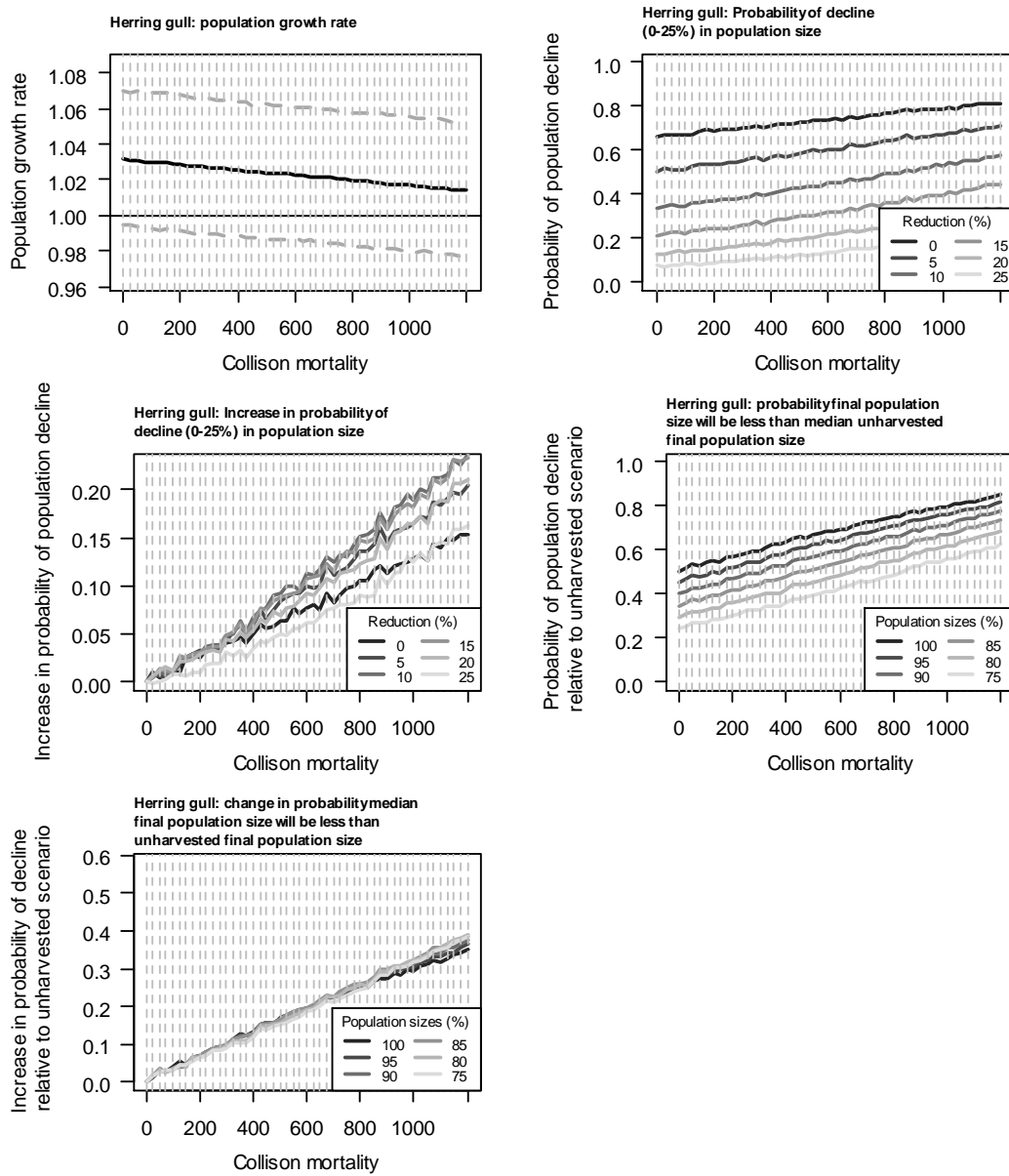


Figure 13: Great Black-Backed Gull – Collision (Non-Breeding Season)

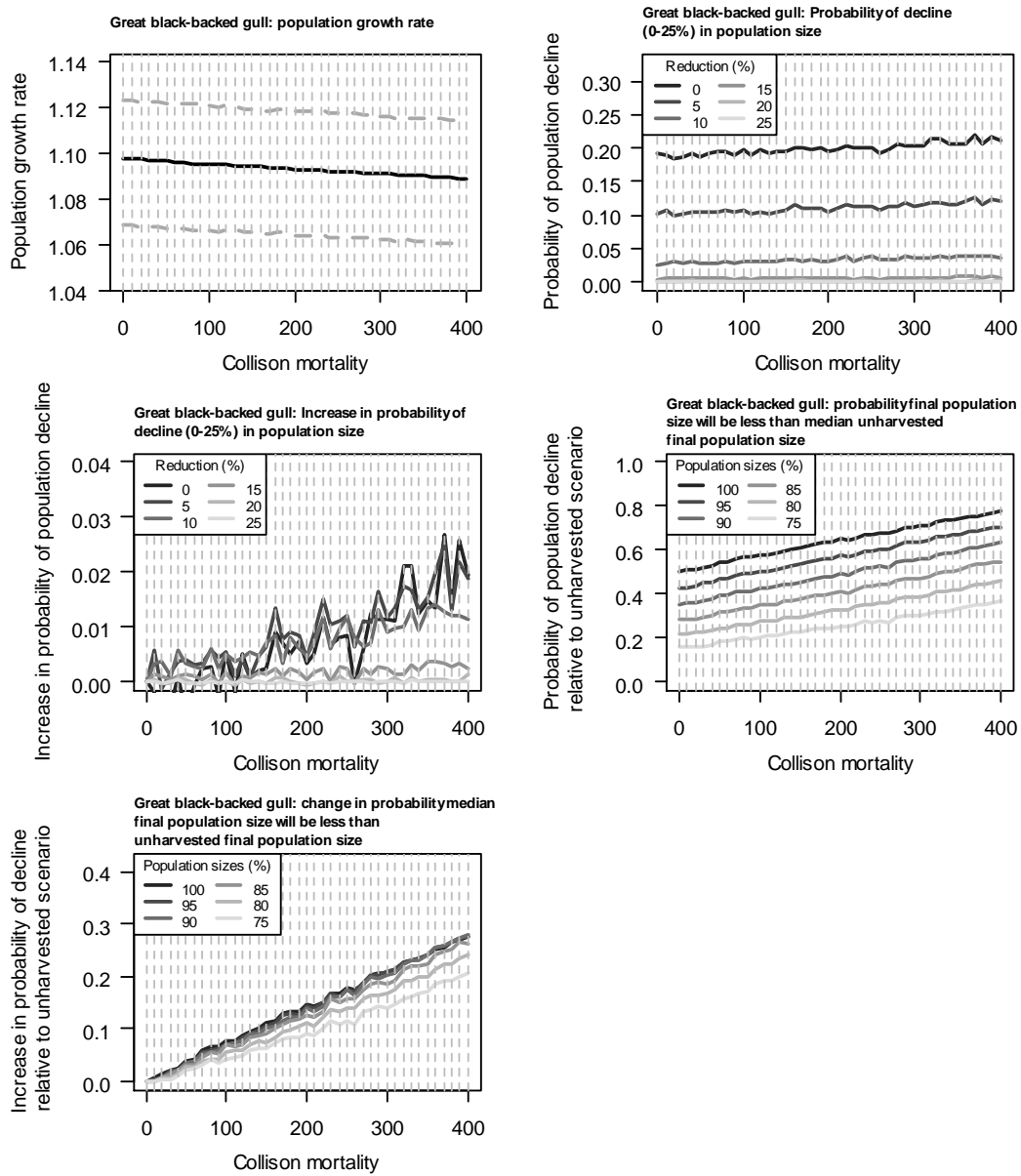


Figure 14: Fulmar – Displacement (East Caithness Cliffs SPA)

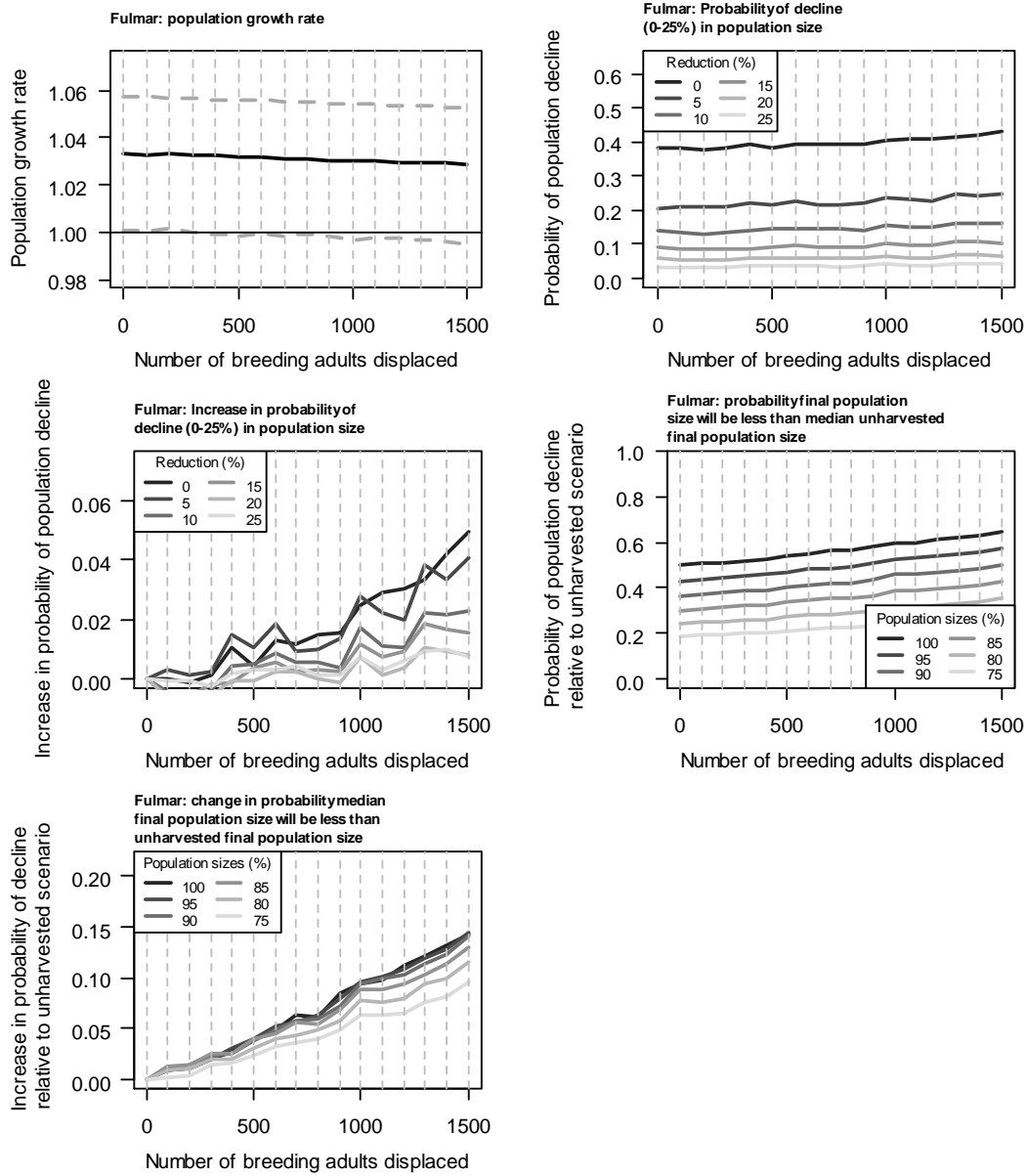


Figure 15: Great Black-Backed Gull – Collision (East Caithness Cliffs SPA)

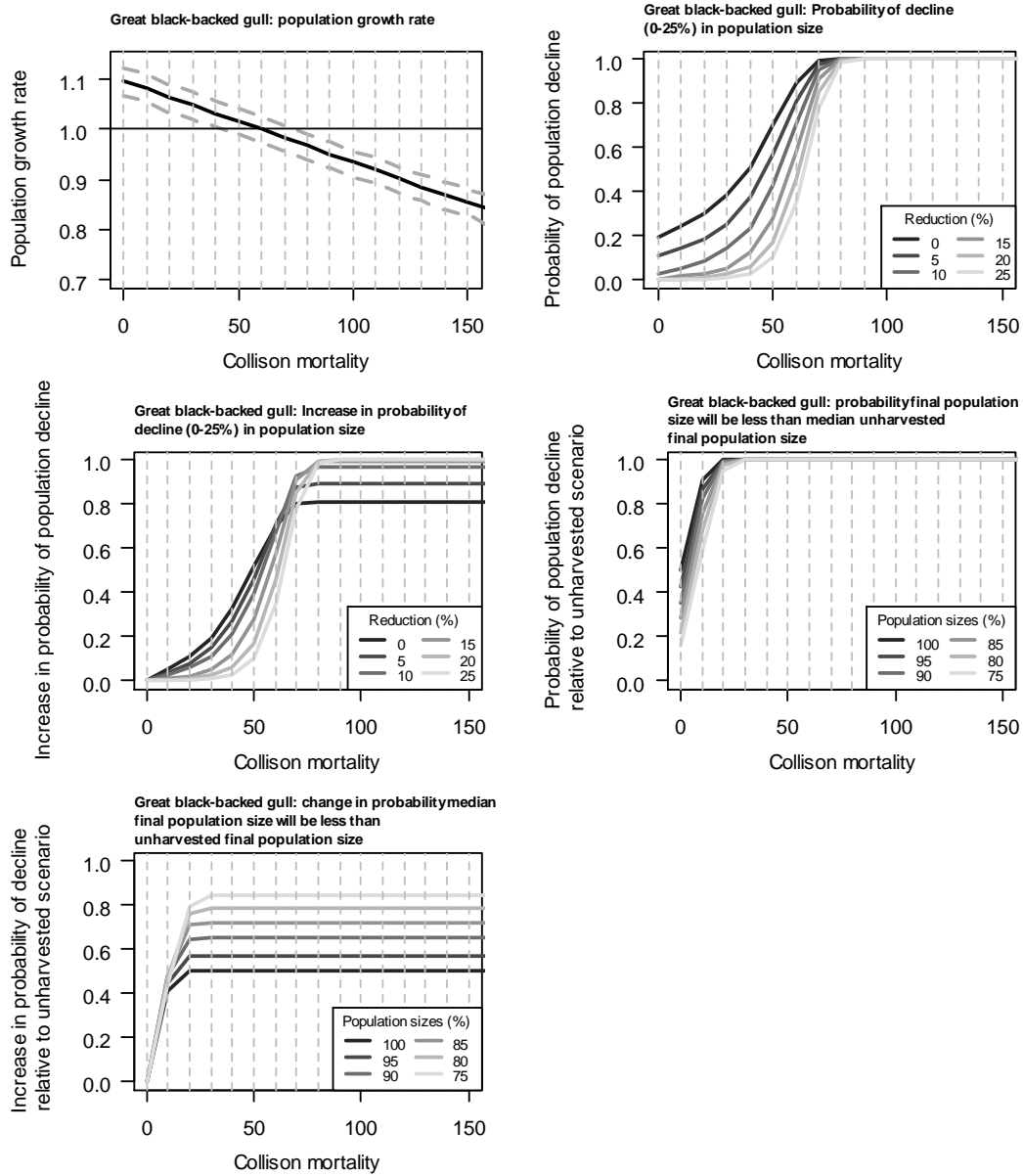


Figure 16: Guillemot – Displacement (East Caithness Cliffs SPA)

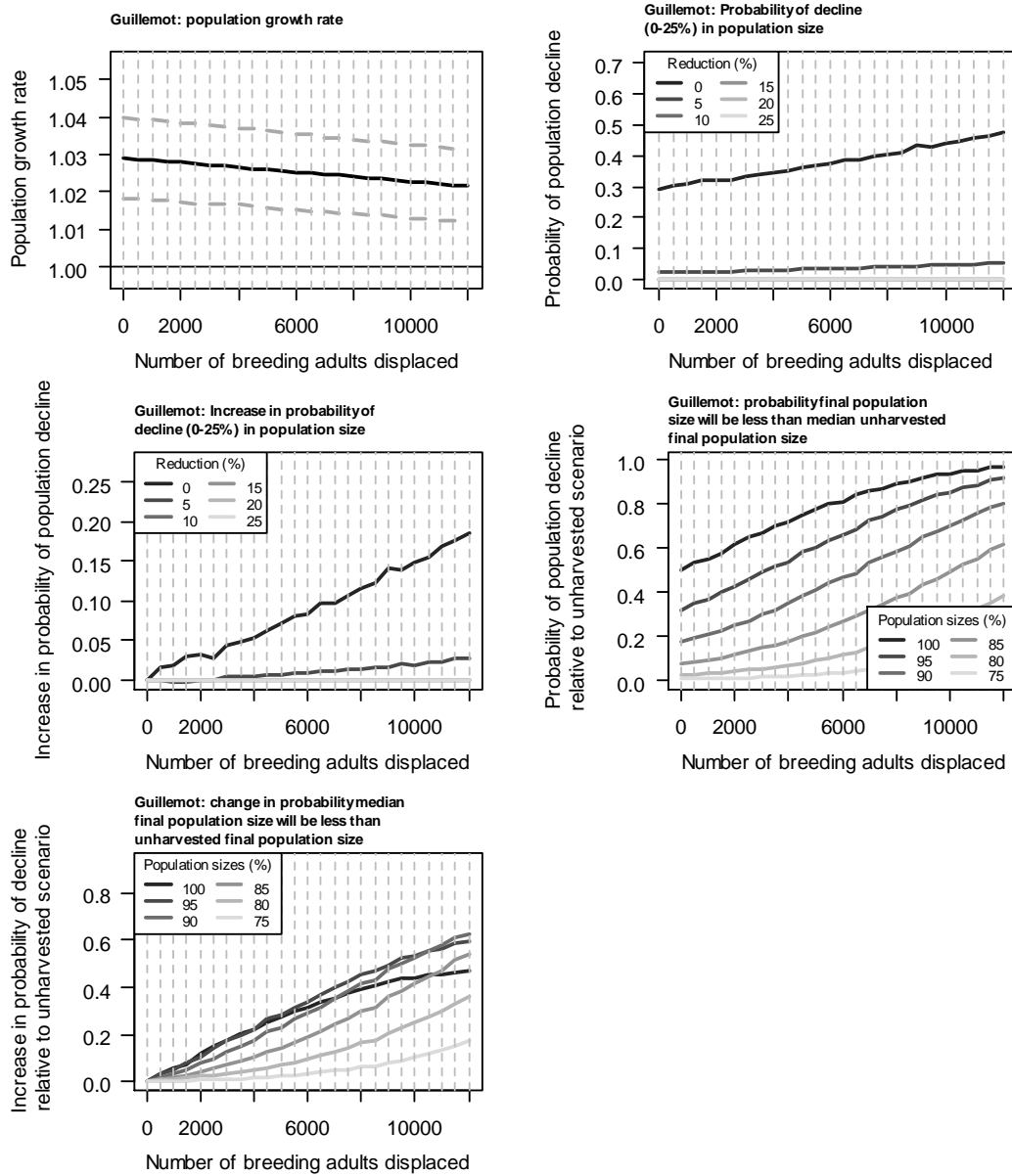


Figure 17: Razorbill – Displacement (East Caithness Cliffs SPA)

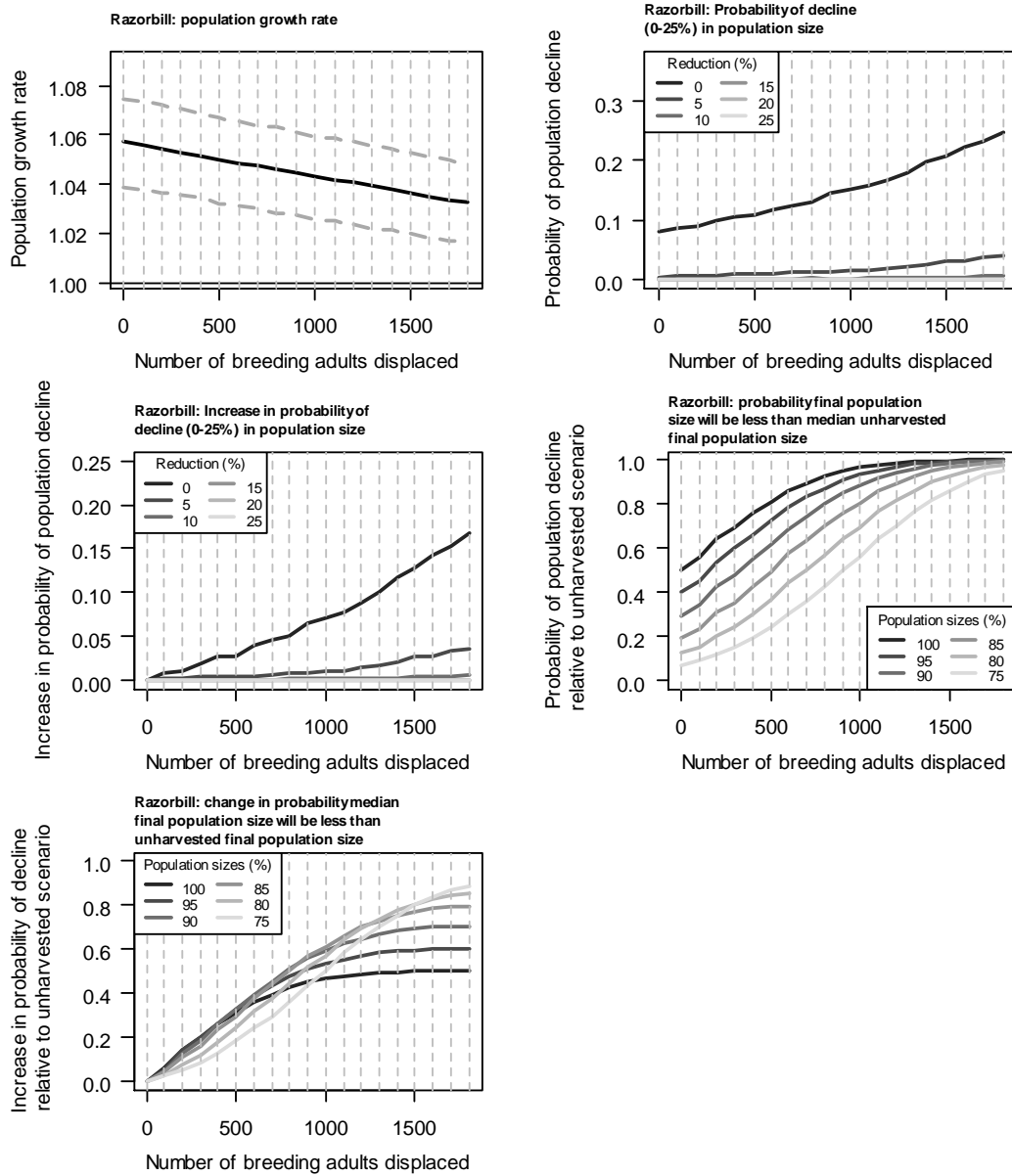


Figure 18: Puffin – Displacement (East Caithness Cliffs SPA)

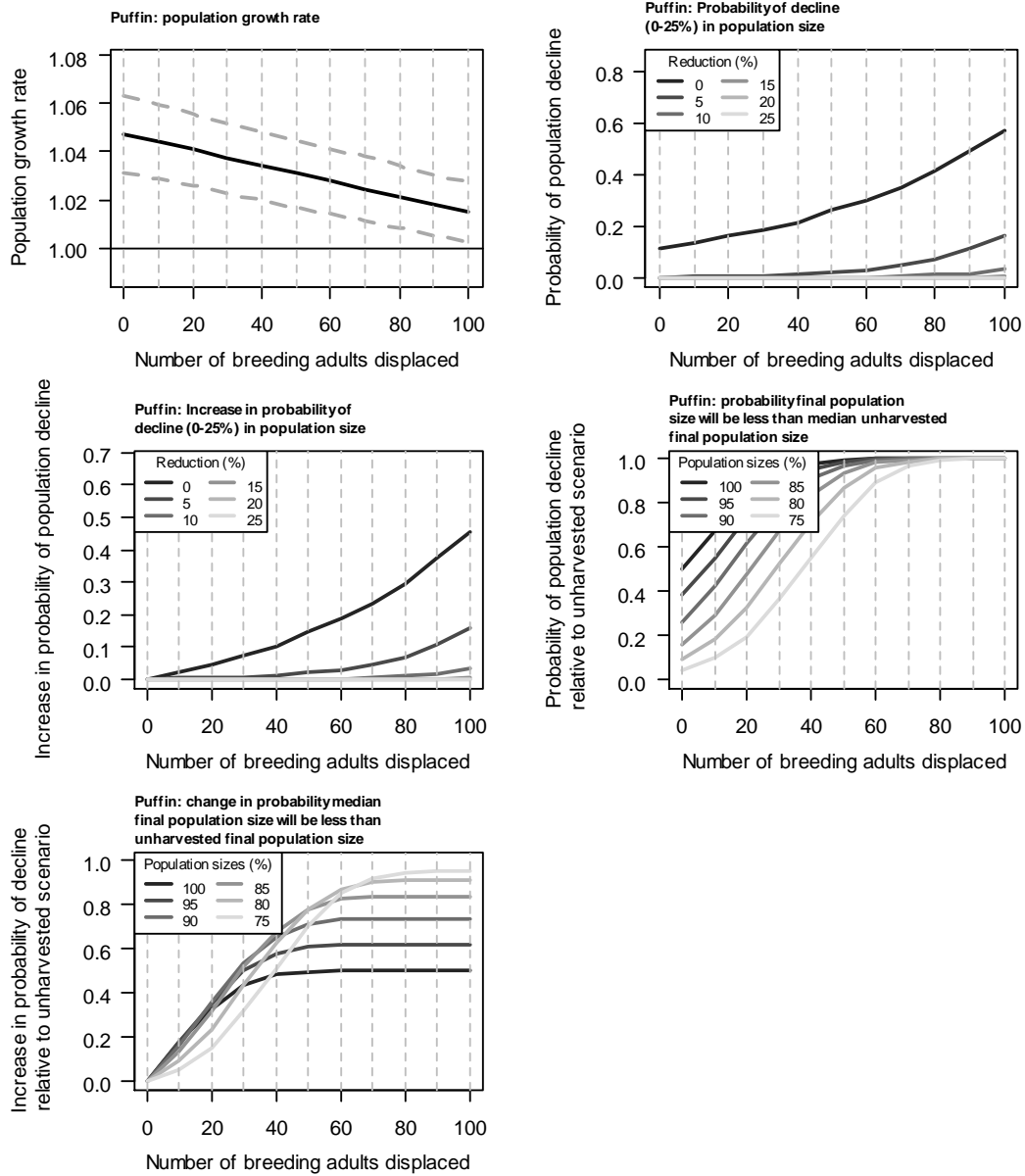


Figure 19: Razorbill – Displacement (North Caithness Cliffs SPA)

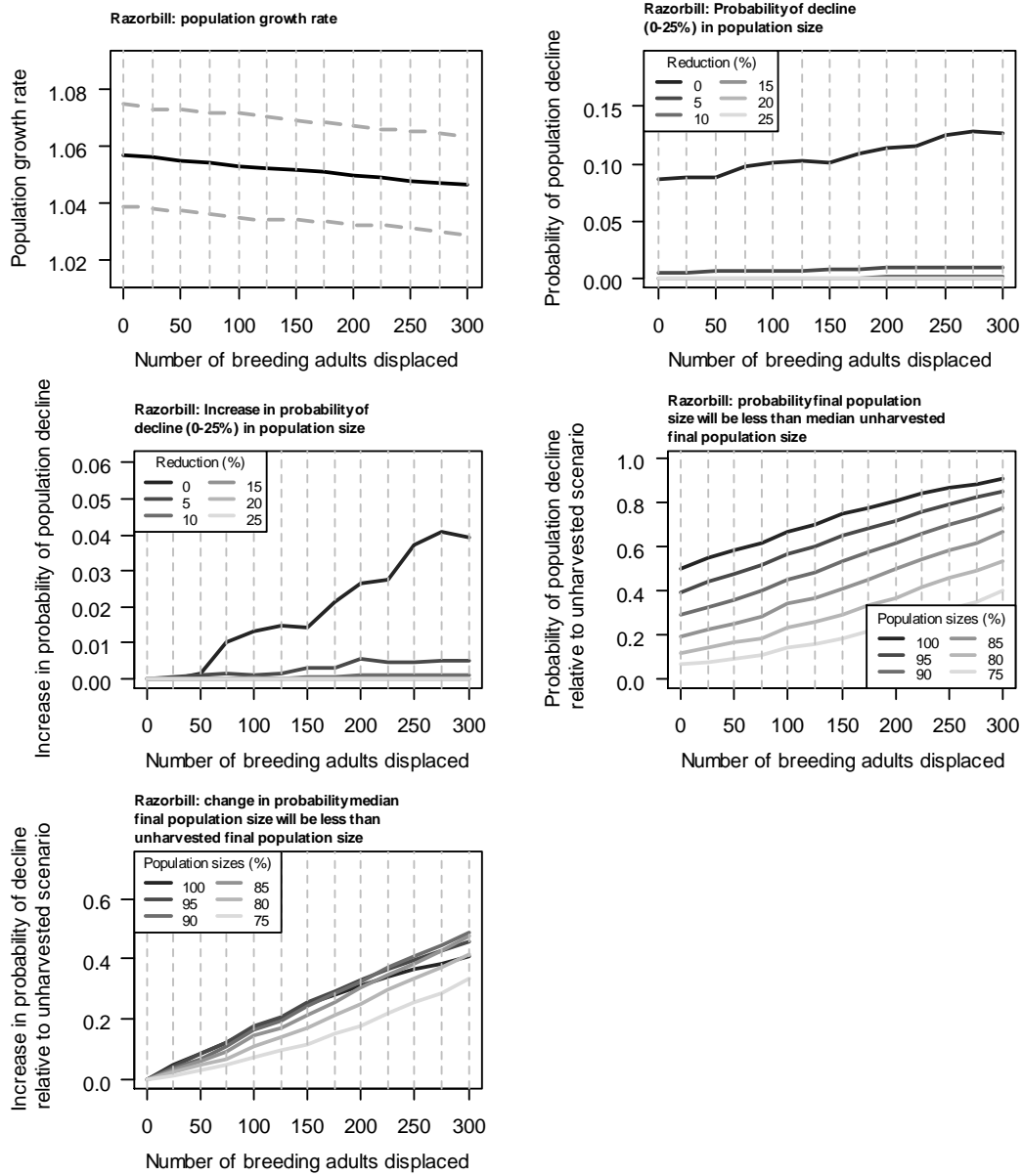


Figure 20: Puffin – Displacement (North Caithness Cliffs SPA)

