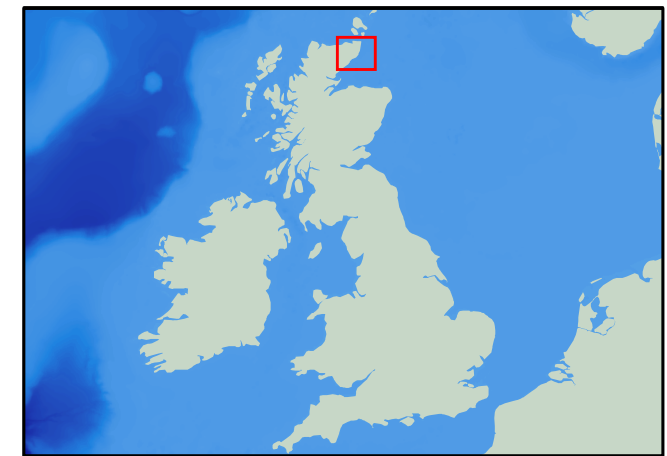


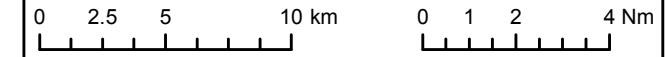
SCRABSTER to
 Bergen approx 18 hrs
 Torshavn approx 14 hrs
 (summer only)



- Legend**
- Beatrice Offshore Wind Farm Site
 - Proposed Turbines
 - 10km, 20km & 30km radii around Site
 - 40km Study Area
 - UK Territorial Sea Limit
 - ◆ Conservation Area
 - Scheduled Monuments
 - Historic Gardens
 - Search Areas for Wild Land (SAWL)
 - Areas of Great Landscape Value (AGLV)

No dimensions are to be scaled from this drawing. All dimensions are to be checked on site. Area measurements for indicative purposes only. Data received from LDA Designs 2011. OS Open data © Crown copyright and database right 2011

Sources: Ordnance Survey, Scottish Natural Heritage & Historic Scotland.
 Bathymetry reproduced from the GEBCO Digital Atlas published by the British Oceanographic Data Centre on behalf of IOC and IHO, 2003. SSE Renewables (UK) Ltd. 2012. The concepts and information contained in this document are the copyright of SSE Renewables (UK) Ltd. Use or copying of the document in whole or in part without the written permission of SSE Renewables (UK) Ltd constitutes an infringement of copyright. SSE Renewables (UK) Ltd. does not warrant that this document is definitive nor free of error and does not accept liability for any loss caused or arising from reliance upon information provided herein.



UK Offshore Development

Figure 14.4
 Landscape Planning Policy

Drawn: MM	Checked: DL	Approved: WW
Date: 01/02/2012	Scale: 1:300,000 @ A3	
Drawing Number: BEA-MAP-EWF-BOWL-134	Revision: 04	
Datum: OSGB36	Projection: BNG	