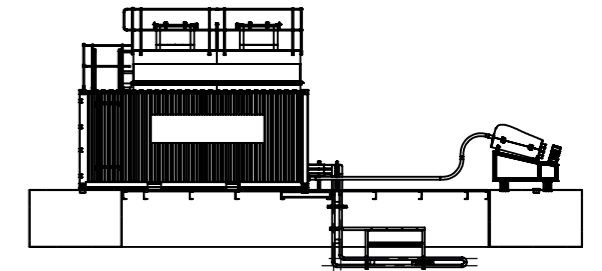
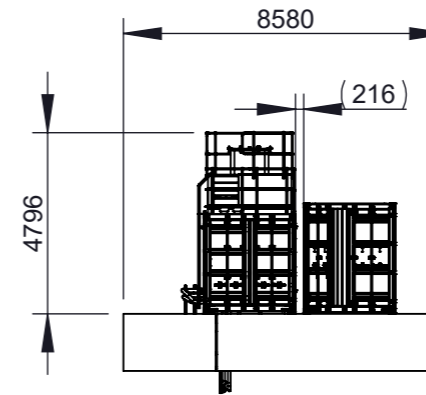
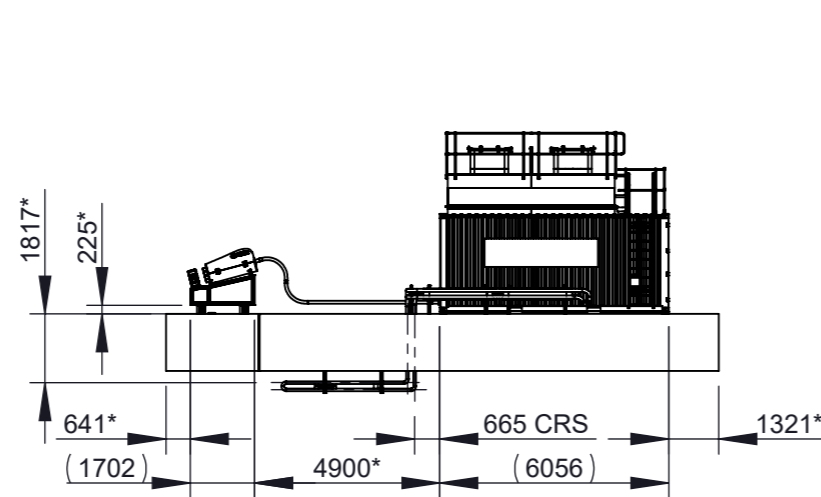
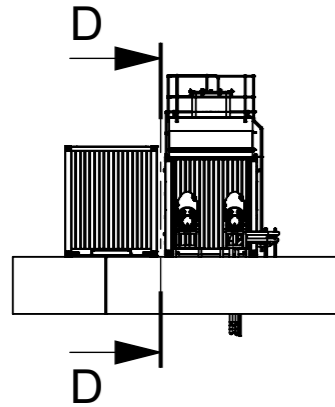
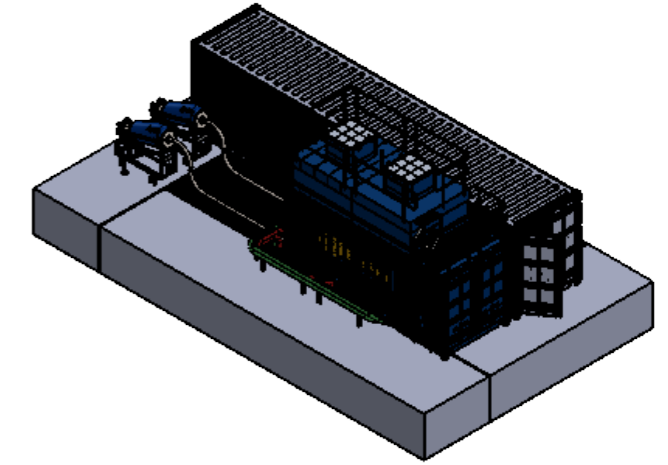


NOTE:
40' CONTAINER FOR REFERENCE
ACTUAL INSTALLATION NOT KNOWN
FOR THIS ELEMENT



SECTION D-D

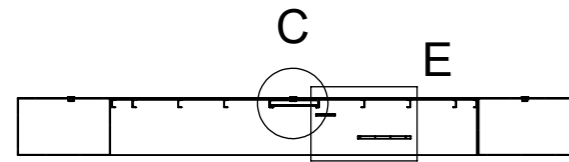
NOTE:
40' CONTAINER HIDDEN FOR CLARITY

* DENOTES DIMENSION SUBJECT TO
SITE INSTALLATION VARIABLES

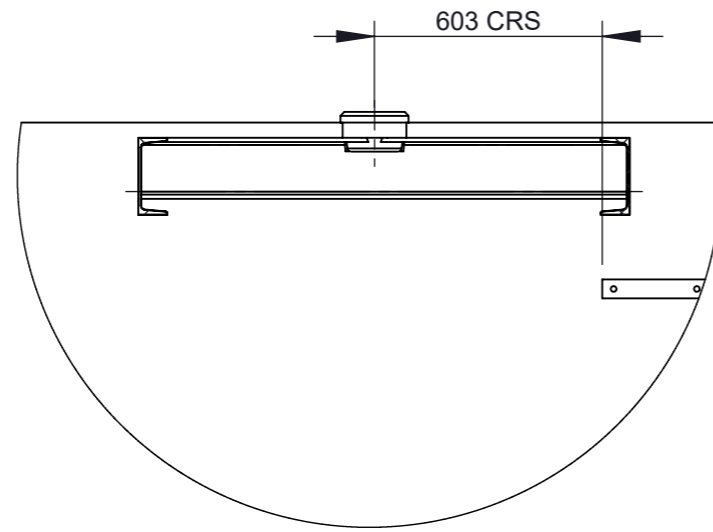
REVISION HISTORY				NAME	DATE	MATERIAL:	SHEET SCALE:	DRG. NO.:
REV	DATE	COMMENT	DRAWN BY	APPV'D BY	DRAWN	Material <not specified>	1:200	GFE_10800_GA_00001
			Neil MacDonald		11/03/2019	WEIGHT: 1295164 Kg.	SHEET SIZE	TITLE: DUNVEGAN RAFT ALTERATIONS - GENERAL ASSEMBLY
			CHK'D		02/05/2019	0.75	A3	PROJECT: 10800
			APPV'D			UNLESS OTHERWISE SPECIFIED, DIMENSIONS ARE IN MILLIMETERS	3rd ANGLE PROJECTION	SYSTEM: BARGE
						FINISH:	TOLERANCES (UOS):	RELEASE NOTE: Approved
						Ra in µm - ISO 1302	DIM. <4000mm ISO 2768-K-E	REVISION
						DEBURR & BREAK SHARP EDGES	>=4000mm DIN 7168-T	A-
						REFERENCED DOCUMENT (NO. / TITLE)	GEO-METR. TOL.	SHEET: 1 OF 2
							<3000mm ISO 2768-K-E	
							>=3000mm DIN 7168-T	
						THIS DRAWING IS COPYRIGHT AND IS THE PROPERTY OF GAELFORCE ENGINEERING LTD. IT MUST NOT BE COPIED OR DISCLOSED TO A THIRD PARTY WITHOUT THE WRITTEN CONCENT OF GAELFORCE ENGINEERING LTD.	GEN. TOL. WELDED PARTS: ISO 13920-BF	
							CHAMFERS: ISO 13715 (DIN 6784)	



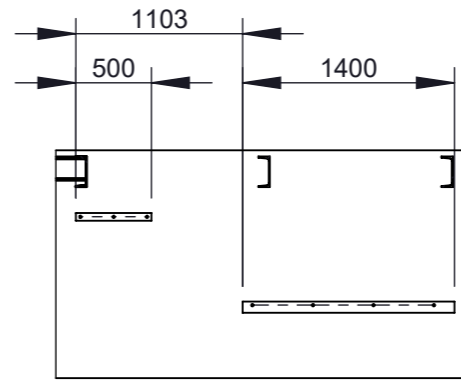
Gael Force Engineering
Gael Force Group
136 Anderson Street, Inverness, IV3 8DH
Tel: +44 (0)1463 716660 Fax: +44 (0)1463 715948
email: gfeengineering@gaelforce.net
website: www.gaelforcegroup.com



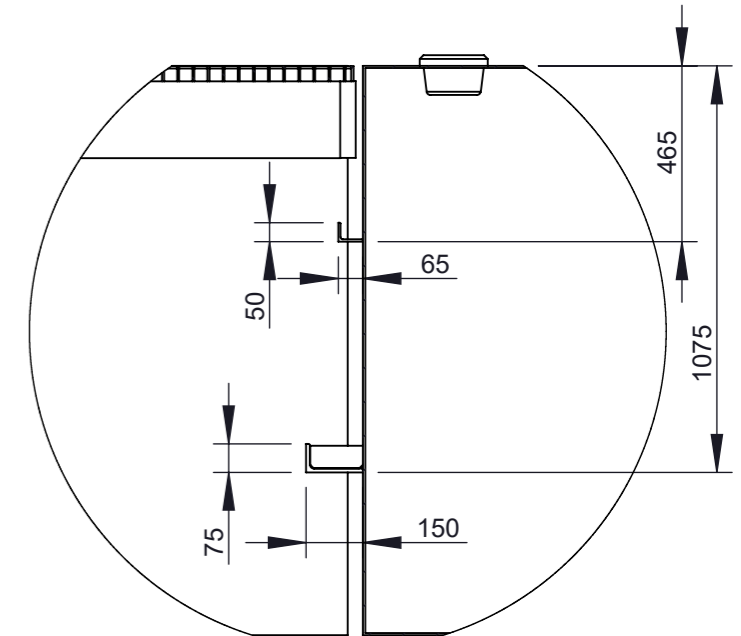
SECTION A-A



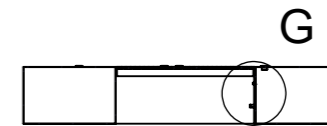
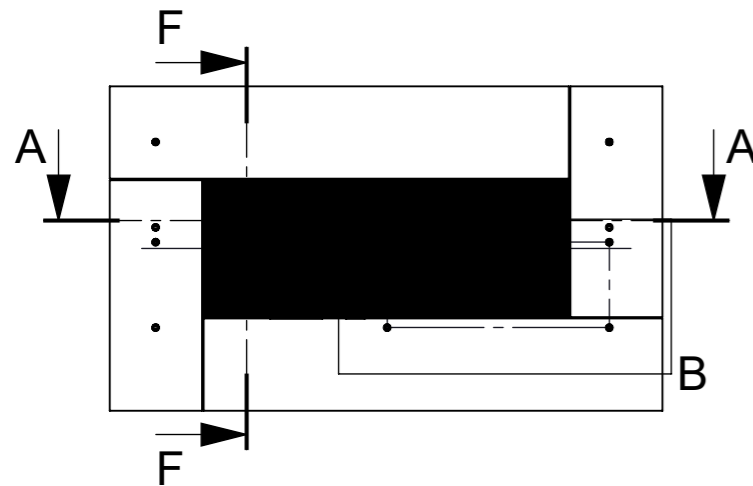
DETAIL C
SCALE 1:20



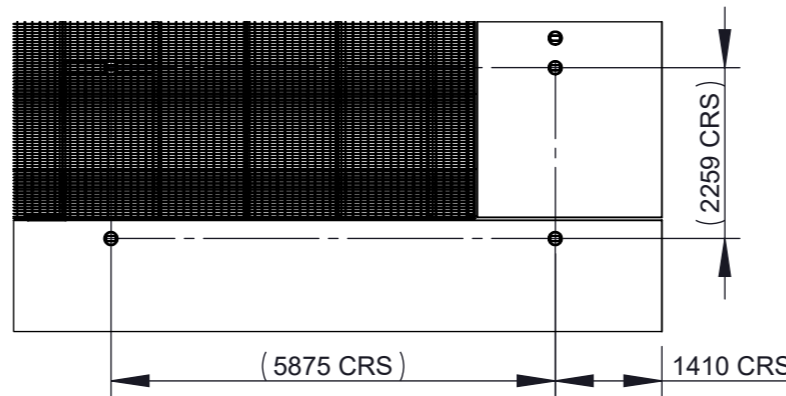
DETAIL E



DETAIL G



SECTION F-F



DETAIL B
SCALE 1:100

REVISION HISTORY				NAME	DATE	MATERIAL:	SHEET SCALE:	DRG. NO.:
REV	DATE	COMMENT	DRAWN BY	APPV'D BY	DRAWN	Material <not specified>	1:200	GFE_10800_GA_00001
					Neil MacDonald	WEIGHT: 3400718.Kg.	SHEET SIZE	TITLE: DUNVEGAN RAFT ALTERATIONS - GENERAL ASSEMBLY
					CHK'D M. Macpherson	63	A3	PROJECT: 10800
					APPV'D	UNLESS OTHERWISE SPECIFIED, DIMENSIONS ARE IN MILLIMETERS	3rd ANGLE PROJECTION	SYSTEM: BARGE
					REFERENCED DOCUMENT (NO. / TITLE)	FINISH: Ra in µm - ISO 1302 DEBURR & BREAK SHARP EDGES	TOLERANCES (UOS): DIM. <4000mm ISO 2768-K-E ≥4000mm DIN 7168-T	RELEASE NOTE: IN WORK
						THIS DRAWING IS COPYRIGHT AND IS THE PROPERTY OF GAELFORCE ENGINEERING LTD. IT MUST NOT BE COPIED OR DISCLOSED TO A THIRD PARTY WITHOUT THE WRITTEN CONCENT OF GAELFORCE ENGINEERING LTD.	GEO-METR. TOL. <3000mm ISO 2768-K-E ≥3000mm DIN 7168-T	REVISION A-
							GEN. TOL. WELDED PARTS: ISO 13920-BF	SHEET: 2 OF 2
							CHAMFERS: ISO 13715 (DIN 6784)	



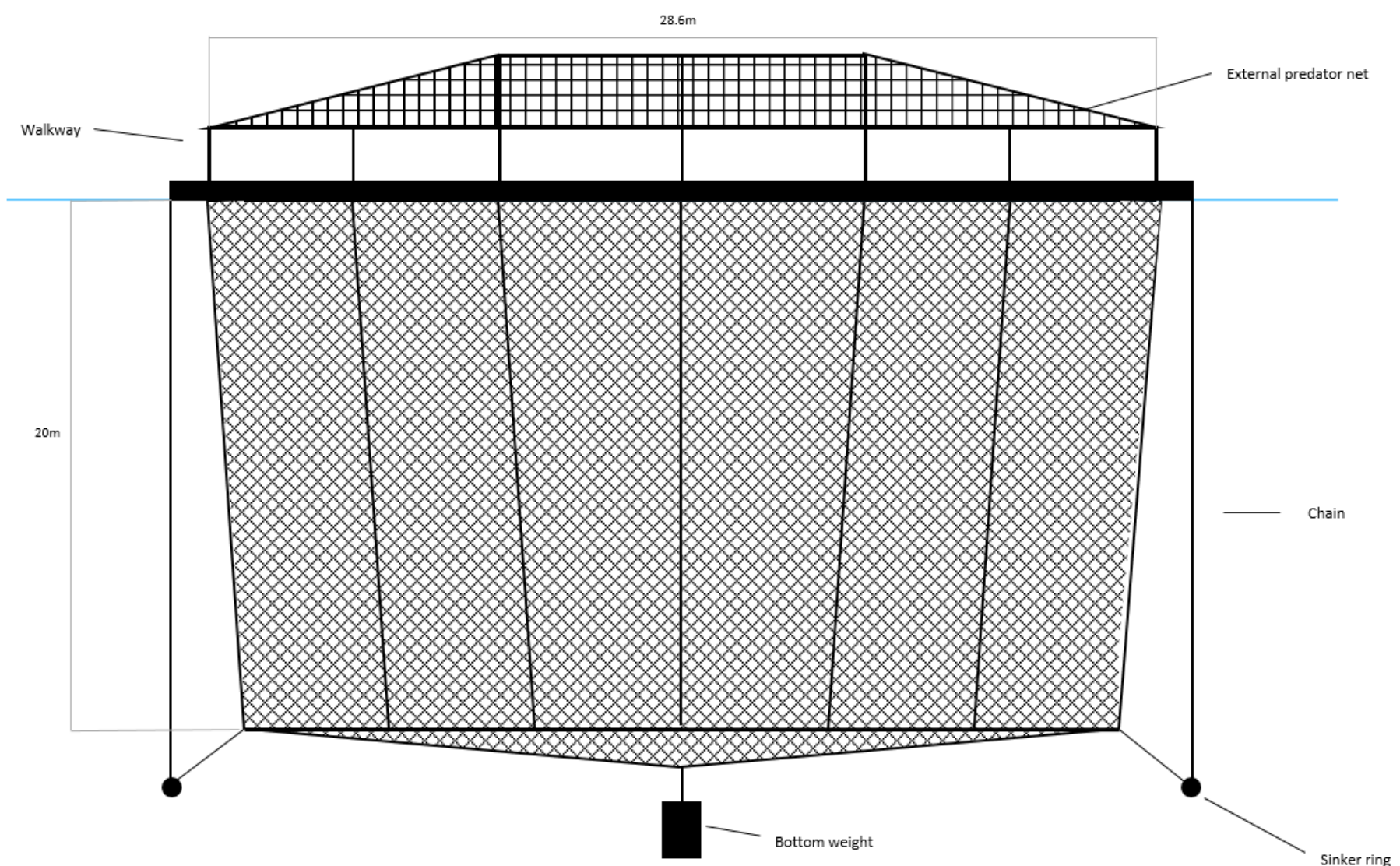
Gael Force Engineering
 Gael Force Group
 136 Anderson Street, Inverness, IV3 8DH
 Tel: +44 (0)1463 716660 Fax: +44 (0)1463 715948
 email: gfeengineering@gaelforce.net
 website: www.gaelforcegroup.com

Appendix: Corlarach Site Positions

MOORING POSITIONS			
LATITUDE	LONGITUDE	EASTING	NORTHING
57°28.700'N	006°37.732'W	122642	852579
57°28.700'N	006°37.632'W	122742	852572
57°28.618'N	006°37.487'W	122876	852411
57°28.483'N	006°37.487'W	122859	852160
57°28.401'N	006°37.632'W	122704	852019
57°28.401'N	006°37.732'W	122604	852026
57°28.483'N	006°37.885'W	122462	852187
57°28.618'N	006°37.885'W	122479	852438

CAGE BOUNDARY POSITIONS			
LATITUDE	LONGITUDE	EASTING	NORTHING
57°28.616'N	006°37.633'W	122730	852417
57°28.481'N	006°37.633'W	122713	852168
57°28.481'N	006°37.734'W	122612	852174
57°28.616'N	006°37.733'W	122630	852424

FEED BARGE POSITION			
LATITUDE	LONGITUDE	EASTING	NORTHING
57°28.454'N	006°37.684'W	122659	852121



ROOTED IN NATURE

CORLARACH FISH FARM

Cage Elevation Drawing

Version 1

19/08/2020