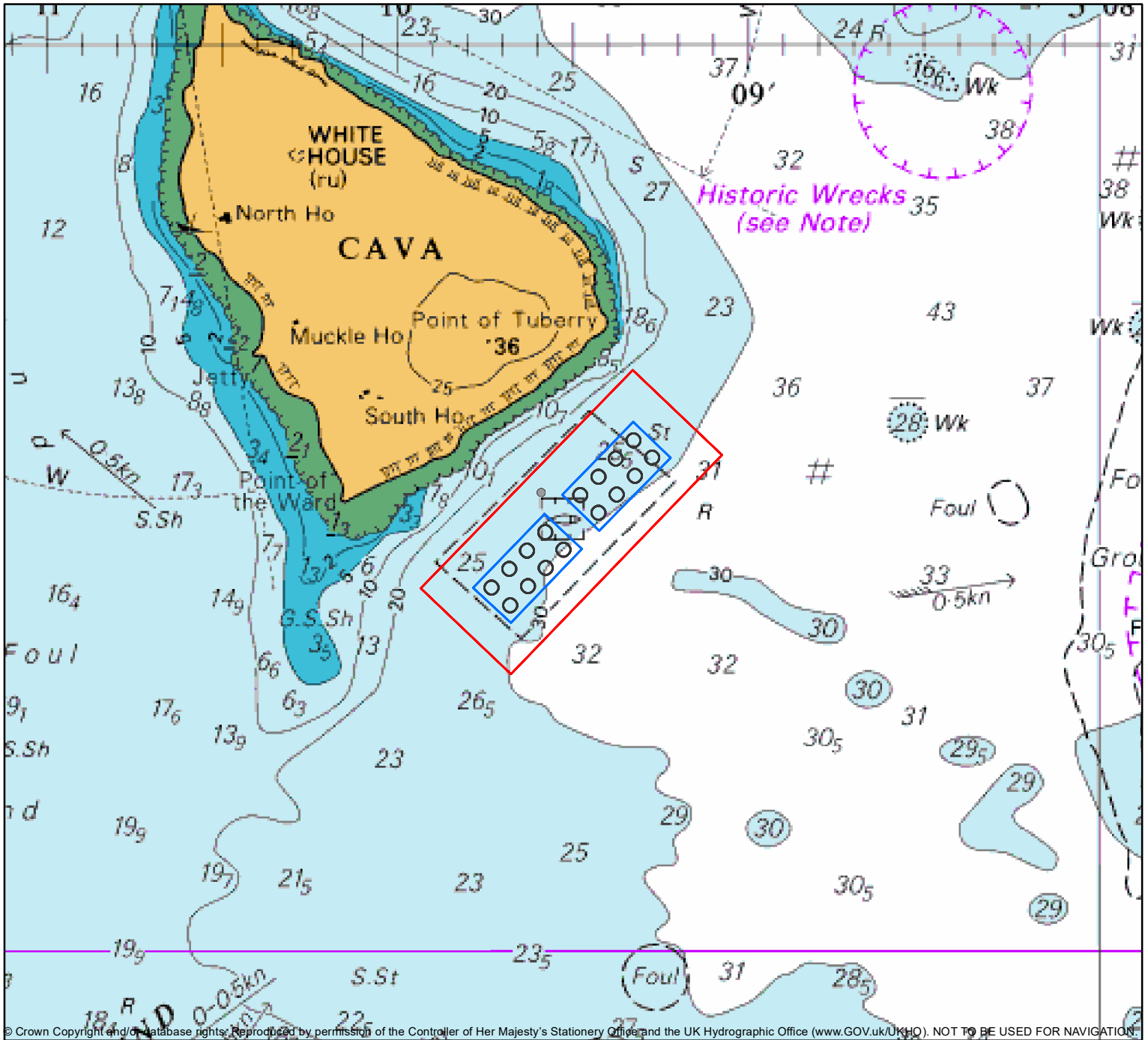


# South Cava



© Crown Copyright and/or database rights. Reproduced by permission of the Controller of Her Majesty's Stationery Office and the UK Hydrographic Office (www.GOV.UK/UHO). NOT TO BE USED FOR NAVIGATION.

South Cava	WGS 1984		OSGB		
	Latitude	Longitude	Easting	Northing	
MCA	58 52.394	3 09.077	333713.34	998999.88	
	58 52.070	3 09.679	333124.39	998408.65	
	58 52.197	3 09.937	332880.52	998648.63	
	58 52.520	3 09.331	333473.29	999237.9	
Grid	58 52.255	3 09.477	333324.48	998748.58	
	58 52.146	3 09.680	333125.88	998549.69	
	58 52.198	3 09.787	333024.72	998647.98	
	58 52.307	3 09.583	333224.28	998846.84	
	58 52.390	3 09.224	333571.95	998994.89	
	58 52.282	3 09.428	333372.44	998797.87	
	58 52.335	3 09.533	333273.24	998897.96	
	58 52.443	3 09.330	333471.78	999095	
	Site Centre	58 52.294	3 09.506	333297.87	998821.43
	Barge	58 52.339	03 09.593	333215.7	998906.4

- Barge
- MCA
- Grid
- Pens

0 0.5 1 km

1:30,000

Coordinate System: WGS 1984 World Mercator  
 Projection: Mercator  
 Datum: WGS 1984  
 False Easting: 0.0000  
 False Northing: 0.0000  
 Central Meridian: 0.0000  
 Standard Parallel 1: 0.0000  
 Units: Meter

