

Ardifuir :- Proposed Feed Barge

Location : Loch Craignish

Site Plan

Project	Kames Fish Farming	
Drawn By	A W B	
Approved by	Jamie McAndrew	
Date	June 2022	Project No.:

Scale : 1 : 1000 @ A3
No. Plan :



Tel./Fax : +44(0)1852 200 286 E-mail :
 : +44(0)1852 200 291 Web Site : www.kames.co.uk

KAMES FISH FARMING LTD. KILMELFORD,
By OBAN, ARGYLL, PA34 4XA

Feed Barge Moorings

- 1 :- 1000kg Drag Embedment Anchor + 3 Shackles (27.5m) x 40mm. Dia Stud Link Chain - GR : 178421,697522
- 2 :- 1000kg Drag Embedment Anchor + 3 Shackles (27.5m) x 40mm. Dia Stud Link Chain - GR : 178414,697526
- 3 :- 1000kg Drag Embedment Anchor + 4 Shackles (27.5m) x 40mm. Dia Stud Link Chain - GR : 178363,697587
- 4 :- 1000kg Drag Embedment Anchor + 4 Shackles (27.5m) x 40mm. Dia Stud Link Chain - GR : 178413,697673
- 5 :- 1000kg Drag Embedment Anchor + 3 Shackles (27.5m) x 40mm. Dia Stud Link Chain - GR : 178491,697659
- 6 :- 1000kg Drag Embedment Anchor + 3 Shackles (27.5m) x 40mm. Dia Stud Link Chain - GR : 178498,697655
- 7 :- 2 Shackles (27.5m) x 32mm Dia Stud Link Chain + Sufficient to reach a Shore pin - GR : 178601,697573
- 8 :- 2 Shackles (27.5m) x 32mm Dia Stud Link Chain + Sufficient to reach a Shore pin - GR : 178532,697488

Feed Barge Boundary

- A :- GR 178517 , 697464
- B :- GR 178347 , 697563
- C :- GR 178426 , 697700
- D :- GR 178610 , 697593

Area within boundary :- 3.25 Hectares

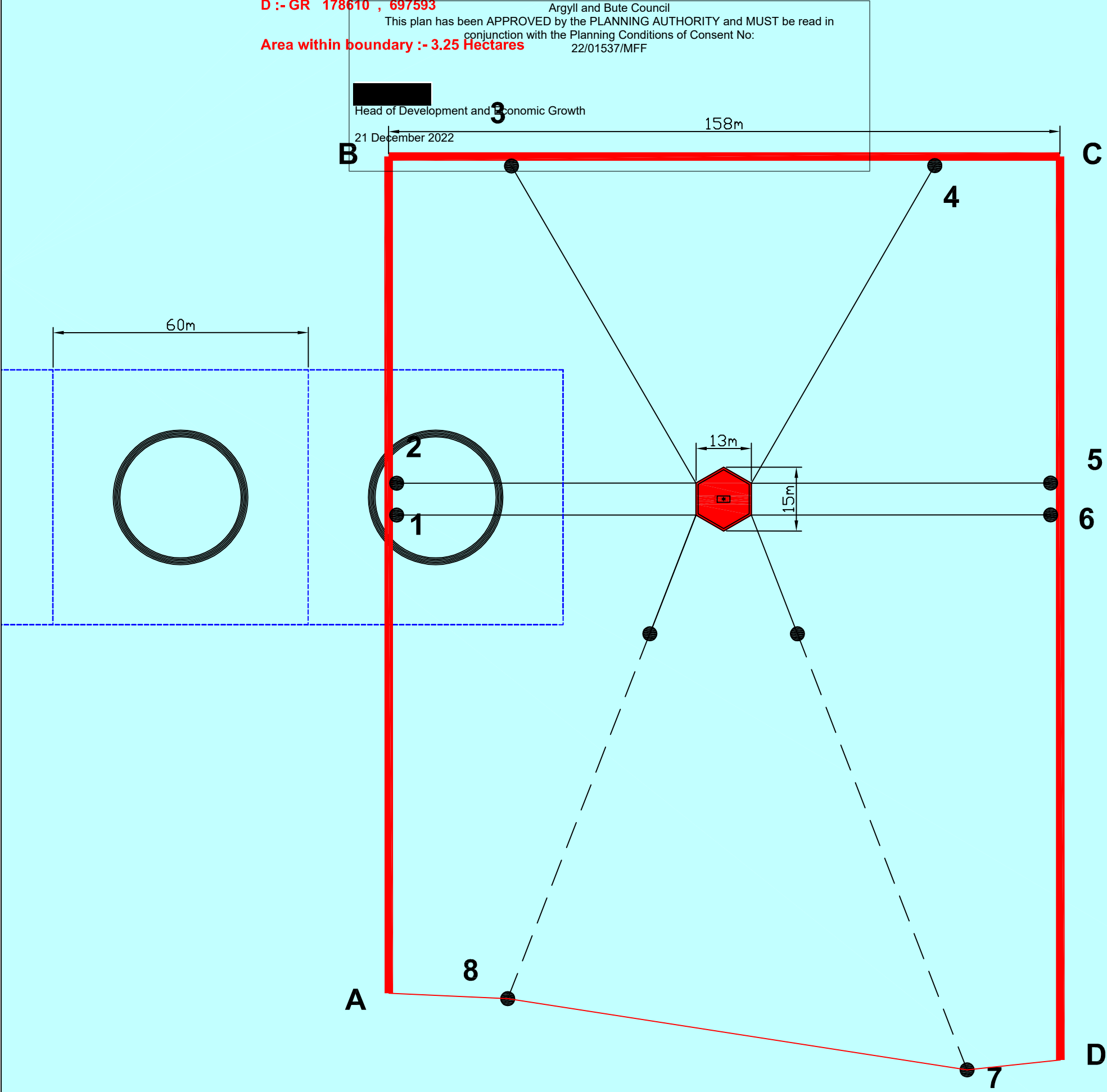
Argyll and Bute Council

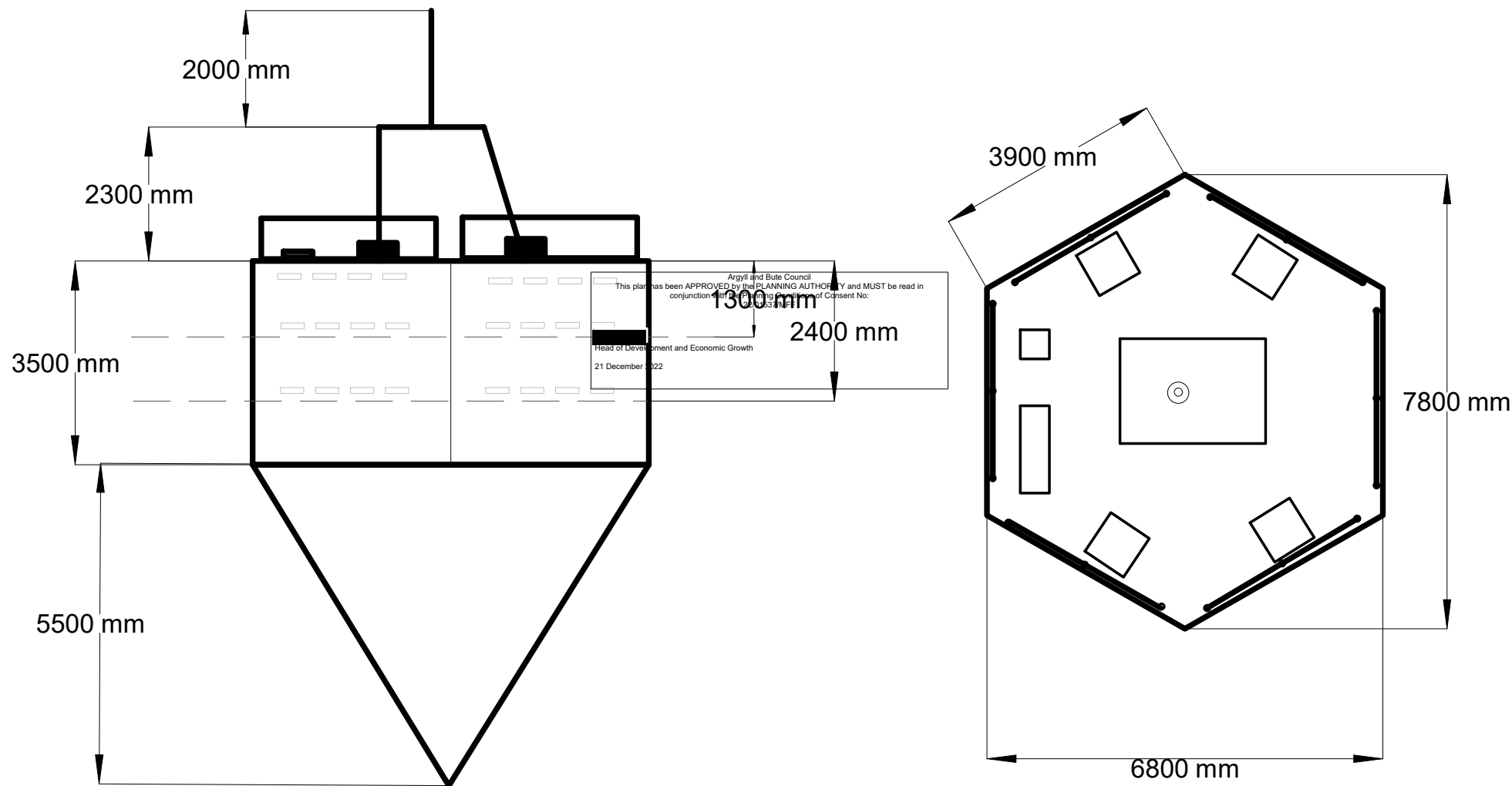
This plan has been APPROVED by the PLANNING AUTHORITY and MUST be read in conjunction with the Planning Conditions of Consent No: 22/01537/MFF

Head of Development and Economic Growth

21 December 2022

158m






KAMES FISH FARMING LIMITED
FAST FIONA 100T CAPACITY FEED BARGE
1:100 @ A4




Site / Feed Barge Boundary

1 :- GR 178273 , 697009
2 :- GR 177976 , 697164
3 :- GR 178317 , 697852
4 :- GR 178656 , 697681

A :- GR 178517 , 697464
B :- GR 178347 , 697563
C :- GR 178426 , 697700
D :- GR 178610 , 697593

Ardifuir :- Proposed Feed Barge		Location : Loch Craignish	
Location Plan			
Project :	Kames Fish Farming	Scale :	1 : 10000 @ A3
Drawn By :	A W B	No. Plan :	
Approved by :	Jamie McAndrew	Project No. :	REV 1
Date :	June 2022	E-mail :	
		Tel./Fax :	+44(0)1852 200 286 +44(0)1852 200 291
		Web Site :	www.kames.co.uk
			

Argyll and Bute Council
This plan has been APPROVED by the PLANNING AUTHORITY and MUST be read in
conjunction with the Planning Conditions of Consent No:
22/01537/MFF

Head of Development and Economic Growth
21 December 2022

Feed Barge Boundary Line

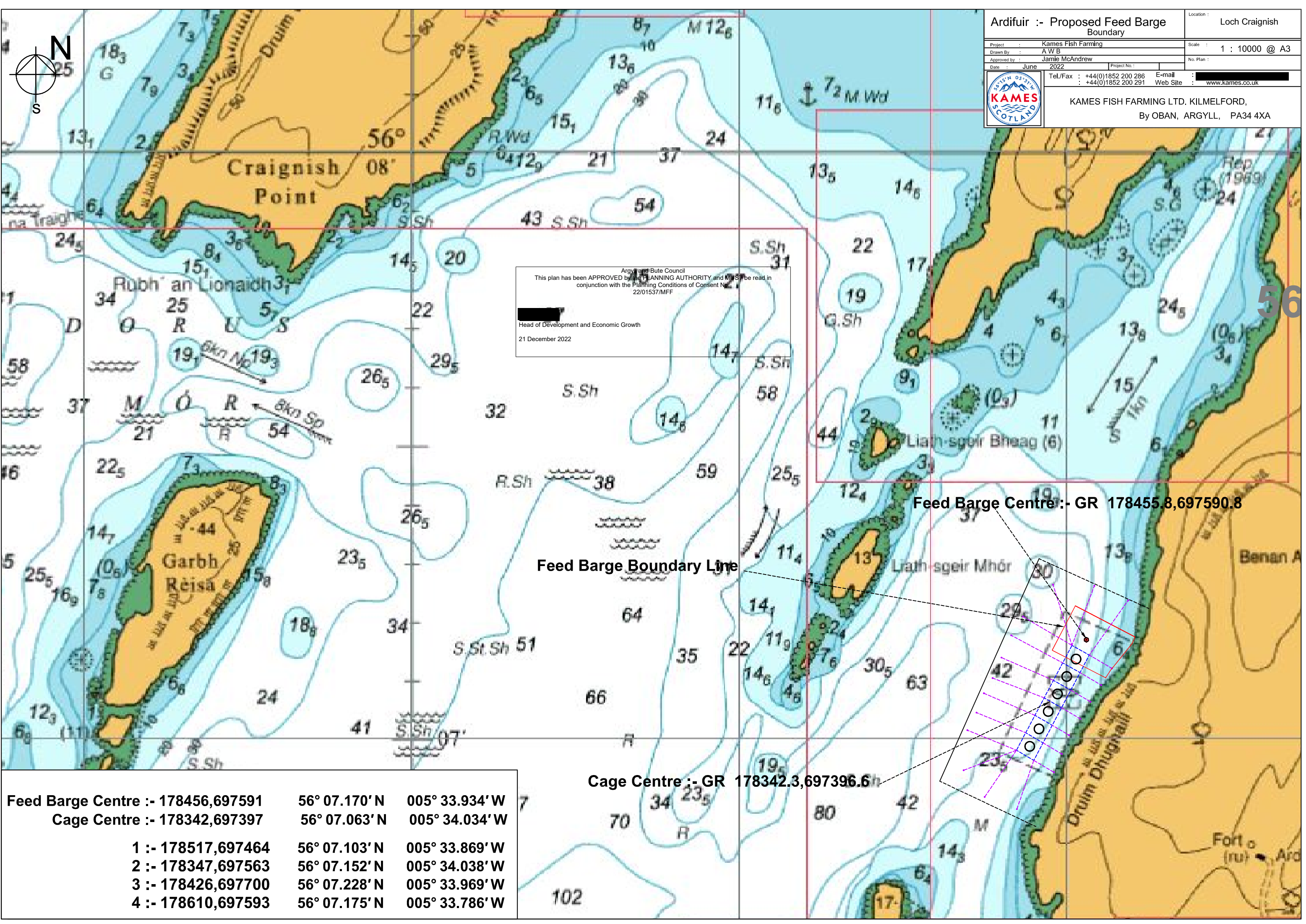
Feed Barge Centre :- GR 178455.8,697590.8

Site Boundary Line

Cage Grid Centre :- GR 178342.3,697396.6

0 500 1000

Scale in metres



Ardifuir :- Proposed Feed Barge Boundary

Project : Kames Fish Farming

Drawn By : A W B

Approved by : Jamie McAndrew

Date : June 2022

Location : Loch Craignish

Scale : 1 : 10000 @ A3

No. Plan :

Tel./Fax : +44(0)1852 200 286

E-mail : [REDACTED]

Web Site : www.kames.co.uk

KAMES FISH FARMING LTD, KILMELFORD,

By OBAN, ARGYLL, PA34 4XA

Argyll and Bute Council
This plan has been APPROVED by the PLANNING AUTHORITY and must be read in conjunction with the Planning Conditions of Consent No. 22/01537/MFF
[REDACTED]
Head of Development and Economic Growth
21 December 2022

Feed Barge Centre :- 178456,697591			56° 07.170' N	005° 33.934' W
Cage Centre :- 178342,697397			56° 07.063' N	005° 34.034' W
1 :- 178517,697464			56° 07.103' N	005° 33.869' W
2 :- 178347,697563			56° 07.152' N	005° 34.038' W
3 :- 178426,697700			56° 07.228' N	005° 33.969' W
4 :- 178610,697593			56° 07.175' N	005° 33.786' W

Feed Barge Boundary Line

Feed Barge Centre:- GR 178455.8,697590.8

Cage Centre :- GR 178342.3,697396.6

Feed Barge Moorings

- 1 :- 1000kg Drag Embedment Anchor + 3 Shackles (27.5m) x 40mm. Dia Stud Link Chain - GR : 178421,697522
- 2 :- 1000kg Drag Embedment Anchor + 3 Shackles (27.5m) x 40mm. Dia Stud Link Chain - GR : 178414,697526
- 3 :- 1000kg Drag Embedment Anchor + 4 Shackles (27.5m) x 40mm. Dia Stud Link Chain - GR : 178363,697587
- 4 :- 1000kg Drag Embedment Anchor + 4 Shackles (27.5m) x 40mm. Dia Stud Link Chain - GR : 178413,697673
- 5 :- 1000kg Drag Embedment Anchor + 3 Shackles (27.5m) x 40mm. Dia Stud Link Chain - GR : 178491,697659
- 6 :- 1000kg Drag Embedment Anchor + 3 Shackles (27.5m) x 40mm. Dia Stud Link Chain - GR : 178498,697655
- 7 :- 2 Shackles (27.5m) x 32mm Dia Stud Link Chain + Sufficient to reach a Shore pin - GR : 178601,697573
- 8 :- 2 Shackles (27.5m) x 32mm Dia Stud Link Chain + Sufficient to reach a Shore pin - GR : 178532,697488

Feed Barge Boundary

- A :- OS GR 178478 , 697422
- B :- OS GR 178308 , 697502
- C :- OS GR 178374 , 697643
- D :- OS GR 178585 , 697544

Area within boundary :- 3.25 Hectares

Feed Barge Mooring Point Buoys

- 1 :- OS GR 178456 , 697583
- 2 :- OS GR 178449 , 697587
- 3 :- OS GR 178456 , 697598
- 4 :- OS GR 178462 , 697595

