

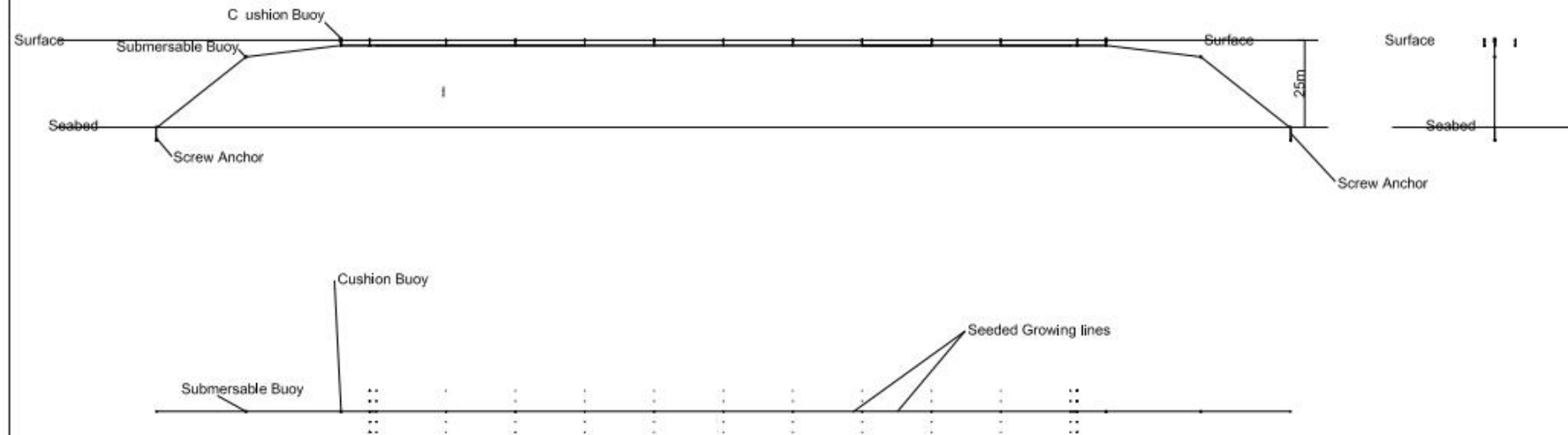






AquaMoor				
A				
PROJECT	002	DATE	30th, November 20	
SCALE	1 : 2500	PROJECT	AWB	
0				

AquaMoor Ltd.  
 9A Bankhead Medway  
 Edinburgh, EH11 4BY  
 Scotland, UK  
 www.aquamoor.co.uk



## **Methodology and Approach**

This document contains information of a confidential and commercially sensitive nature. It is provided to Marine Scotland for information purposes in support of the Marine License application on behalf of **Seaweed Farming Scotland Ltd**. It is not intended for dissemination to any third party without the express permission of the author (AquaMoor Limited). Use or distribution for any purpose other than that stated is prohibited. This document is not for public disclosure.

An outline is given in this document for AquaMoor's methodology for the design, supply and installation of a low environmental impact mooring system and aquaculture structure for seaweed farms on the West Coast.

### **1. DRAWINGS**

Drawings of the site plan are included in Appendix 1. Drawings of structural elevations have been redacted to protect IP as they are subject to copyright.

### **2. METHOD STATEMENT**

This section defines the key processes and procedures that AquaMoor requires to deliver a mooring solution to **Seaweed Farming Scotland Ltd**, and the allocation of responsibilities to parties involved.

Key areas are:

Related documents

AquaMoor Scope of Work

AquaMoor Marine Operations responsibilities

Client Responsibilities

Installation Procedure

Rig Handling

Umbilical Handling

Anchor Loading

Contingency

Management of Change

### **3. TASKS FOR PROJECT PLAN**

Obtain final environmental data to confirm that collected through the tender process

Carry out dynamic systems analysis to confirm loadings in system

Methodology For Installation and Decommissioning - SFS  
for **Seaweed Farming Scotland Ltd**

Finalise specification of components to meet confirmed loads with safety factor

Procure components and assemble at mobilisation area

Mobilise rig to site

Await suitable weather window – (contingency)

Carry out and complete installation of anchors, mooring system, structural frame and buoyancy.

Attach long lines and floats

Demobilise

Documentation and approvals

#### **4. SCOPE OF WORK**

The objective is to provide a fully installed mooring system at **Seaweed Farming Scotland Ltd** site by the end of Q3 2021.

Key deliverables are:

Detailed analysis & design

Dimensioning & specification of components and materials

Production of Alpha Anchors, mooring legs and suitable floatation

Installation of the above including mobilisation of equipment & people to site

Documentation for the completed installation

#### **5. INSTALLATION**

Procure components and equipment and position to mobilisation area

Mobilise drilling rig to shore base area

Identify suitable weather window

Install anchors, anchor lines and cushion buoys

Complete attachment of long lines and floats – liaise with **Seaweed Farming Scotland Ltd** and material partners on attachment of growing rope and seed medium

Demobilise rig and return to base

Complete documentation, sign approvals, obtain client acceptance confirmation

## **6. OPTIONAL ADDITIONS**

Produce maintenance plan for mooring system

Set up “as installed” mooring system on online management system to manage and evidence certification and moorings inspections through service life.

## **7. DECOMMISSIONING PLAN**

Mobilise rig to site

Recover floats and longline (assume **Seaweed Farming Scotland Ltds'** growing lines already removed)

Attach rig to anchors and withdraw

Recover anchors, mooring lines and cushion buoys to demobilisation area for client disposition

Demobilise rig and return to base

## **8. BASIS OF DESIGN**

The objective is to define the key design inputs that AquaMoor require to propose a complete farm system and structural solution to **Seaweed Farming Scotland Ltd**.

Key inputs are:

Design standards

Location of site

Bathymetry

Geotechnical data

Farm specification

Hydrographic conditions

Meteorological conditions

Mooring reaction loads

Consent and license requirements

Scope of supply

Location of base on land



Methodology For Installation and Decommissioning - SFS  
for **Seaweed Farming Scotland Ltd**

The outline design is for direct embedment, removable helical screw anchors, synthetic fibre mooring legs, cushion buoys, long lines and floats.

Dimensioning confirmed for environmental conditions through dynamic systems analysis of loads imposed by environmental conditions on site:

Tidal range

Seabed bathymetry

Current

Wave

Wind

Specify equipment including anchors to meet modelled loads with safety factors.

A biosecurity plan has been produced by AquaMoor Ltd on behalf of Seaweed Farming Scotland (SFS) Ltd to take action and minimise the risk of transmission of marine invasive non-native species (INNS) and diseases at, and in the vicinity of, the Argyll site.

This plan describes the biosecurity issues present in the local marine and coastal areas. It presents actions for the prevention, early detection, control and mitigation of the introduction and spread of selected INNS and diseases that affect or impact upon the marine environments and algal aquaculture. As seaweed species spend no part of their life-cycle in freshwater this biosecurity plan covers solely the marine environment.

Given the high costs for the mitigation, control and eradication of INNS and diseases once they are established, **this plan emphasises the need for prevention and rapid response** to their introduction before becoming established. SFS considers the production and implementation of this plan and associated management measures as essential components in the protection and enhancement of the marine environment, which will help minimise risk, conserve biodiversity in the area, protect natural stocks of seaweed, improve the marine environment, and in turn safe-guard sustainable seaweed cultivation for the local economy in the future. However, the spread of marine INNS and disease is not a locally confined issue and monitoring the host of pathways that facilitate the entry and spread of marine INNS and disease requires coordination and communication with neighbouring stakeholders such as creel fishermen, shellfish and finfish farmers. The ultimate key to the effectiveness of this plan is in increasing awareness in, and taking a partnership approach with, all other local relevant stakeholders. This approach will ensure the success and long-term sustainability of the biosecurity actions and the marine environment in Argyll.

The key objectives for meeting the vision of this plan are:

**Objective 1:** Reduce the risk of introduction and spread of marine INNS and disease at, and in the vicinity of SFS farm sites, with a focus on 'key-risk' INNS.

**Objective 2:** Promote suitable detection, monitoring and rapid response systems for marine INNS and disease which pose significant threats to biodiversity and the local economy, with a focus on 'key-risk' INNS.

**Objective 3:** Develop effective control programmes for existing marine 'key-risk' INNS and diseases which are practical, sustainable, and prevent their spread.

These objectives are in accordance with the three elements of the Invasive Non-Native Species Framework Strategy for Great Britain 2008 (<http://www.nonnativespecies.org/index.cfm?sectionid=55>).

On an open water farm site such as a seaweed farm, there is very limited scope for biosecurity mitigation measures. Risk will never be zero so the focus of this Biosecurity Plan is on what is feasible to achieve on the farm site and in the shore based farming activities.

The three key elements of the strategy are:

- Prevention - most effective and least environmentally damaging
- Rapid response - early detection, surveillance, monitoring and potential eradication
- Control and containment - mitigation, control and eradication

Key actions for the SFS marine operations team at the farm site and shore base are:

- Awareness and reporting of potential key-risk INNS sightings or disease
- Comply with standard 'Check, Clean, Dry' campaign in general water use
- Support mitigation actions to control spread of key-risk INNS and disease

### Guiding principles

The need to understand the pathways of invasion and the vectors which transport NNS from region to region is paramount in SFS's execution of their marine biosecurity plan.

The need to be prepared to act rapidly if planned biosecurity measures for INNS fail has been widely acknowledged and is included in SFS's biosecurity plan.

**CHECK:** gear after leaving the water for mud, aquatic animals or plant material. Remove anything you find and leave it at the site.

**CLEAN:** Clean everything thoroughly as soon as possible, and use hot water if possible.

**DRY:** everything for as long as possible before using elsewhere as some invasive plants and animals can survive for two weeks in damp conditions.

Implementation of this biosecurity plan will bring many environmental and socio-economic benefits including:

- Control of existing marine INNS and disease at, and in the vicinity of, the site.
- Prevention of new marine INNS and disease becoming established.
- Safeguarded biodiversity and the conservation of the marine environment at, and in the vicinity of, the farm site.
- Contribution to the achievement of Good Environmental Status in the Marine Strategy Framework Directive and Good Ecological Status addressing Water Framework Directive and other relevant legislative actions.

The proposed seaweed farm locations are identified on the map below. The location of SFS's Operational Shore base and facilities are also identified.

Depth at the farm sites is between 20m-30m so only a small proportion of the water column will be utilized for cultivation. The seabed is of mixed character across the site with mud and sand in the deeper parts and some rocky reefs towards the shore.

## SFS Farm Sites

## SFS Shore Base / Facilities

Land based activities will be limited to those undertaken at the shorebase near Connel. As SFS is farming native Scottish seaweeds, utilising local seed sources is an obvious choice, with the benefit of protecting biosecurity. Introducing invasive or non-native species is absolutely not a planned activity.

Water based activities include year-round operations such as inspecting and maintaining moorings and farm structure. Seaweed farming is a seasonal enterprise so there are discreet periods of increased activity in the farming calendar around seeding lines and harvesting the crop.

As all our algae stock will be from local sources there are three main pathways for potential contaminations with NNS: The establishment of a locally invasive organism in Loch Lihne, introducing an NNS from equipment from another location, or transporting a NSS to another location. To manage these potential pathways, we will adopt regular visual and other checks as appropriate to identify any problematic NSS. We will consider the possibility of contamination if transporting equipment from other areas although it is not in SFS's operational plans to do so. Appropriate cleaning or disinfecting will always be undertaken and SFS recognize this is especially important in situations when risk cannot be altogether avoided. Likewise, if transporting equipment or material to other sites in a manner that could represent a biosecurity risk, appropriate forms of



cleaning, disinfecting will be undertaken if transport cannot be avoided.

#### Risk analysis & management

Risk assessment will be routinely undertaken for all operations pertaining to biosecurity within our operations. As an example, the list below will be used for documenting the risk assessment process prior to that activity being undertaken.

- i) Activity (description)
- ii) Risks and hazards identified
- iii) Potential impact of hazards
- iv) Mitigation strategy
- v) Other considerations – containment/reporting etc.

#### 5 Likelihood of introduction, establishment & subsequent spread

Rapid response before a marine INNS or disease becomes established is vital. Without some form of coordinated and systematic approach to the prevention of introduction and control of the spread of marine INNS and disease, it is likely that the ecological, social and economic impacts and the costs for mitigation, control and eradication of these species and diseases will continue to increase. Once established, it may not be possible to fully eradicate some invasive species and diseases, or it may be too costly, therefore prevention of arrival is crucial. One of the problems involved with managing marine INNS and disease is the continuity of the marine environment and the fact it is almost impossible to seal off an area to treat it, there is a potential for larval transport of INNS and it could be very easy for reinvasion to occur (IUCN Marine Menace report). There have been some successful eradications of marine INNS but it is far better and more cost-effective to prevent an introduction in the first place. This plan aims to set out and implement such an approach at a local level in the event that selected species and diseases could significantly impact seaweed cultivation and the local marine environment at, and in the vicinity of, the Oronsay East site.

#### Potential impact

Potential threats of introduction of marine INNS at, and in the vicinity of the farm sites come from those species that are not currently found here but are present in neighbouring areas, those that could have access through one or more pathways to the area, or could be spread further within the locality.

Biosecurity actions to manage risk - at all times maintain a precautionary approach

### Prevention

Actions for prevention are based on identifying and disrupting pathways for the introduction and spread of marine INNS and disease. This is the most effective and least damaging to the environment and steps must be effective, simple and realistic. SFS will work to raise local public and stakeholder awareness around the importance of the prevention of marine INNS and disease and the practical measures suggested that should be taken by stakeholders. Although this plan focuses on algal risk INNS, a general compliance with the 'Check, Clean, Dry' campaign should be promoted with all water users to prevent the risk of any INNS.

#### Site monitoring - Maintain constant vigilance

This biosecurity plan will be initiated by SFS at all of the farm sites. Progress in delivering the objectives of this plan will be determined by the level of stakeholder and partner engagement, support and commitment delivery. It is important that monitoring of the effectiveness of the plan's actions is undertaken including:

- Assessment of efficiency of surveillance and rapid response
- Occurrence and distribution of marine INNS and algal disease
- Effectiveness of control/eradication programmes
- Assessment of ability to close/restrict pathways
- Monitoring general activity and risk of marine INNS and disease

The overall Biosecurity Plan will be reviewed annually by SFS to update the records of current marine INNS and diseases present, environmental, socio-economic risks and potential threats and practical information on effectiveness of procedures and suggestions for the future. SFS may undertake to review particular sections more frequently, as and when they are recorded.

#### Early Detection and Surveillance - through regular inspection

Should prevention fail, it is important that marine INNS are identified accurately and reported when found to ensure vital early detection so action can be taken quickly before they can spread. Members of the public and other stakeholders will be encouraged by SFS and partners/contractors to keep a look out for new species. GB NNSS campaign identification sheets and reporting information should be distributed to stakeholders to assist with this, and where appropriate sightings should be checked by a relevant organisation. A free 'That's Invasive!' smartphone app (Th@s Invasive, Natural Apptitude Ltd) is available and will be included in SFS stakeholder information distribution as another way to help with identification and recording of INNS. Surveys can establish locations of existing populations and routine monitoring of new or established populations can detect any changes.

Actions for rapid response focus on the establishment of a clear reporting and response system and advertised with a single point of contact but are dependent on awareness amongst marine

users. The “eyes” of the early warning system will be trained members of the public, water users and stakeholders.

Contingency & Response plans - Rapid response and rapid eradication

Contingencies include; removal and destruction of any NNS, notifying and recruiting the appropriate bodies in the event of a biosecurity issue, avoiding introducing any organism, materials or equipment which we believe may represent a biosecurity hazard until appropriate mitigation strategies have been implemented.

Sign-off and Responsibilities exist within the Quality Management system of SFS for a formal reporting structure. Regular review of our biosecurity policy and its implementation will be undertaken, at appropriate intervals.

## Invasive Non-Native Species Recording schemes and further information sources

### **For all species:**

<http://www.nonnativespecies.org/alerts/index.cfm>

<http://www.mba.ac.uk/recording/>

Email GB NNSS at [alert\\_nonnative@ceh.ac.uk](mailto:alert_nonnative@ceh.ac.uk)

[http://www.marlin.ac.uk/marine\\_alien/marine\\_alien.htm](http://www.marlin.ac.uk/marine_alien/marine_alien.htm)

'That's Invasive' Smartphone App information available at:

<http://www.rinse-europe.eu/smartphone-apps>

### ***For further information on marine INNS:***

GB Non-Native Species Secretariat

<https://secure.fera.defra.gov.uk/nonnativespecies/home/index.cfm>

For Advice on Best Practice for leisure boaters on preventing the spread of INNS The Green Blue:

[http://www.thegreenblue.org.uk/boat\\_users/antifoul\\_and\\_invasive\\_species.aspx](http://www.thegreenblue.org.uk/boat_users/antifoul_and_invasive_species.aspx)

RAFTS Invasive Species and Bio-security Programme:

[http://www.invasivespecies.scot.nhs.uk/biosecurity\\_programme/biosecurity\\_plans.asp](http://www.invasivespecies.scot.nhs.uk/biosecurity_programme/biosecurity_plans.asp)

International Maritime Organisation Ballast water

<http://www.imo.org/OurWork/Environment/BallastWaterManagement/Pages/default.aspx>

GB NNSS Identification Sheets to ensure accurate identification of species:

<http://www.nonnativespecies.org/index.cfm?sectionid=47>

Recording and species information:

<http://www.nonnativespecies.org/index.cfm?sectionid=81>

[tionid=81](http://www.nonnativespecies.org/index.cfm?sectionid=81)



PUBLIC NOTICES

**MARINE (SCOTLAND) ACT 2010**  
**MARINE FARM, EILEAN MO SHLINNEAG, LOCH SUNART**

Notice is hereby given that has applied to the Scottish Ministers of the Scottish Government, under Part 4 of the Marine (Scotland) Act 2010, in respect of the deposit of a marine farm at:

Cost Location	Latitude	£2000 Longitude
Eilean mo Schlinneag, Loch Sunart	56° 41.766' N	005° 43.078' W
	56° 41.813' N	005° 42.930' W
	56° 41.581' N	005° 42.680' W
	56° 41.533' N	005° 42.841' W

(WGS84)

Plans showing the position of the works may be inspected at <http://marine.gov.scot/ml/marine-licence-shellfish-farm-eilean-mo-schlinneag-loch-sunart-07292>

Objections relating to safety of navigation in respect of the application should be made by email to:

MS.MarineLicensing@gov.scot within 28 days of the date of this notice, quoting reference: 07292 and Fassfern Mussels Limited.

**Fair Processing Notice**

he Scottish Government's Marine Scotland Licensing Operations Team (MS-LOT) determine applications for marine licences under the Marine (Scotland) Act 2010 and the Marine and Coastal Access Act 2009. During the consultation process any person having an interest in the outcome of the application may make representation to MS-LOT. The representation may contain personal information, for example a name or address. This representation will only be used for the purpose of determining an application and will be stored securely in the Scottish Government's official corporate record. Representations will be shared with the applicant and/or agent acting on behalf of the applicant, any people or organisations that we consult in relation to the application and, where necessary, be published online, however personal information will be removed before sharing or publishing.

A full privacy notice can be found at: <http://www.gov.scot/Topics/marine/Licensing/marine/PrivacyNotice>. If you are unable to access this, or you have any queries or concerns about how your personal information will be handled, contact MS-LOT at: [ms.marinelicensing@gov.scot](mailto:ms.marinelicensing@gov.scot).

**MARINE (SCOTLAND) ACT 2010**  
**MARINE FARM, AULISTON POINT, LOCH SUNART**

Notice is hereby given that has applied to the Scottish Ministers of the Scottish Government, under Part 4 of the Marine (Scotland) Act 2010, in respect of the deposit of a marine farm at:

Cost Location	Latitude	£2000 Longitude
Auliston Point, Loch Sunart	56° 39.007' N	005° 59.381' W
	56° 39.031' N	005° 58.890' W
	56° 39.016' N	005° 58.883' W
	56° 38.994' N	005° 59.374' W

(WGS84)

Plans showing the position of the works may be inspected at <http://marine.gov.scot/ml/marine-licence-marine-farm-auliston-point-loch-sunart-07291>

Objections relating to safety of navigation in respect of the application should be made by email to:

MS.MarineLicensing@gov.scot within 28 days of the date of this notice, quoting reference: 07291 and Fassfern Mussels Limited.

**Fair Processing Notice**

The Scottish Government's Marine Scotland Licensing Operations Team (MS-LOT) determine applications for marine licences under the Marine (Scotland) Act 2010 and the Marine and Coastal Access Act 2009. During the consultation process any person having an interest in the outcome of the application may make representation to MS-LOT. The representation may contain personal information, for example a name or address. This representation will only be used for the purpose of determining an application and will be stored securely in the Scottish Government's official corporate record. Representations will be shared with the applicant and/or agent acting on behalf of the applicant, any people or organisations that we consult in relation to the application and, where necessary, be published online, however personal information will be removed before sharing or publishing.

A full privacy notice can be found at: <http://www.gov.scot/Topics/marine/Licensing/marine/PrivacyNotice>. If you are unable to access this, or you have any queries or concerns about how your personal information will be handled, contact MS-LOT at: [ms.marinelicensing@gov.scot](mailto:ms.marinelicensing@gov.scot).

**Argyll and Bute Council**

**PLANNING**

The applications listed below together with the plans and other documents submitted with them may be viewed electronically through Argyll and Bute Council website at [www.argyll-bute.gov.uk](http://www.argyll-bute.gov.uk). Having regard to Schedule 6, Part 3, s10 of the Coronavirus (Scotland) Act 2020, documents are only available to inspect electronically at this time. Customers requiring assistance can contact us by e-mail: [planning.hq@argyll-bute.gov.uk](mailto:planning.hq@argyll-bute.gov.uk) or tel. 01546 605518.

**TOWN AND COUNTRY PLANNING DEVELOPMENT MANAGEMENT PROCEDURE (SCOTLAND) REGULATIONS 2013 REGULATION 20(1) ADVERT STATEMENT**

**TOWN AND COUNTRY PLANNING (SCOTLAND) ACT 1997 (AS AMENDED), RELATED PLANNING (LISTED BUILDINGS AND CONSERVATION AREAS) (SCOTLAND) ACT 1997**

Ref. No.	Proposal	Site Address
20/00752/PP	Retention of 80 metre high wind monitoring mast previously approved under application reference 17/01570/PP for a further period of 3 years	Land Approx. 3.4 KM South East Of Balliemeanoch Farm East Lochaweside Dalmally Argyll And Bute
20/00023/PP	Erection of telecommunications equipment compound with 25 metre high lattice tower, construction of gabion wall, installation of culvert and associated works	Lagalochan Track (off The C29) Near Kilmelford Argyll And Bute
20/00736/PP	Erection of dwellinghouse	Land Adjacent To Ben Hiant View Tobermory Isle Of Mull Argyll And Bute
20/00757/PP	Erection of dwellinghouse and garage, installation of biodisc treatment plant and formation of access (amended design relative to planning permission 18/01431/PP)	Land East Of Achnabealaidh North Connel Oban Argyll And Bute
20/00792/PP	Erection of dwellinghouse, installation of sewage treatment plant and formation of vehicular access	Land North West Of Kennovara (Plot A) Benderloch Oban Argyll And Bute
20/00793/PP	Erection of dwellinghouse, installation of sewage treatment plant and formation of vehicular access	Land West Of Kennovara (Plot B) Benderloch Oban Argyll And Bute
20/00697/PP	Modification to the existing barley intake conveyor to provide new intake elevator and offloading swing arm conveyor, with associated access platform	Port Ellen Maltings Port Ellen Isle Of Islay Argyll And Bute PA42 7AJ

Written comments can be submitted online <http://www.argyll-bute.gov.uk/planning-and-environment/find-and-comment-planning-applications-or-to-argyll-and-bute-council-development-management-kilmory-castle-lochgilthead-argyll-pa31-8RT> within 21 days of this advert. Please quote the reference number in any correspondence. Any letter of representation the Council receives is considered a public document and will be published on our website. Anonymous or marked confidential correspondence will not be considered. A weekly list of all applications can be viewed on the Councils website. Customers are requested to use electronic communication where possible during the coronavirus pandemic as our ability to process postal mail is restricted.

**TOWN AND COUNTRY PLANNING (SCOTLAND) ACT 1997 (as amended)**

**Submission of a Social and Economic Development Masterplan for the Island of Ulva.**

Notice is hereby given that the North West Mull Community Woodland Company – Ulva Subcommittee has submitted a Masterplan to Argyll and Bute Council setting out their proposals for the repopulation and regeneration of the Island of Ulva. A copy of the Masterplan (reference 20/00804/MPLAN) may be viewed electronically through the Argyll and Bute Council website at [www.argyll-bute.gov.uk](http://www.argyll-bute.gov.uk). Having regard to Schedule 6, Part 3, s10 of the Coronavirus (Scotland) Act 2020, documents are only available to inspect electronically at this time. Customers requiring assistance can contact us by e-mail [planning.hq@argyll-bute.gov.uk](mailto:planning.hq@argyll-bute.gov.uk) or tel 01546 605518. Written comments can be submitted online <http://www.argyll-bute.gov.uk/planning-and-environment/find-and-comment-planning-applications-or-to-argyll-and-bute-council-development-management-kilmory-castle-lochgilthead-argyll-pa31-8RT> within 28 days of this advert. Please quote the reference number in any correspondence. Any letter of representation the Council receives is considered a public document and will be published on our website. Anonymous or marked confidential correspondence will not be considered. Customers are requested to use electronic communication where possible during the coronavirus pandemic as our ability to process postal mail is restricted.

To find out more about living and working in Argyll & Bute visit us at: [www.argyll-bute.gov.uk](http://www.argyll-bute.gov.uk)

**Comhairle Earra – Ghàidheal agus Bhòid**

**Argyll Bute COUNCIL**

[www.highland.gov.uk](http://www.highland.gov.uk)

**The Highland Council**  
**Comhairle na Gàidhealtachd**

**TOWN AND COUNTRY PLANNING (SCOTLAND) ACT 1997**  
**PLANNING (LISTED BUILDING AND CONSERVATION AREAS) (SCOTLAND) ACT 1997**

The applications listed below, along with plans and other documents submitted with them, may be examined online at <http://wam.highland.gov.uk>.

Written comments should be made to the EPC at the contact details below within the time period indicated from the date of this notice. Anyone making a representation about this proposal should note that their letter or email will be disclosed to any individual or body who requests sight of representations in respect of this proposal.

Reference Number	Development Address	Proposal Description
20/01648/FUL	Land 40M NW Of Aldi North Road, Fort William	Formation of a vehicular access off the A82 North Road
20/01714/FUL	Glenmamie, Lochailort	Change of use for holiday 4 pods and parking
20/01602/FUL	Talamh Nua Ariundle, Strontian	Erection of house and letting unit
20/01596/FUL	Land 140M SW Of Seaview Cleadale, Isle of Eigg	Erection of house

**Time period for comments is 14 days**

ePlanning Centre, The Highland Council, Glenurquhart Road, INVERNESS IV3 5NX  
Email: [eplanning@highland.gov.uk](mailto:eplanning@highland.gov.uk)

**NOTICE OF PRE-APPLICATION CONSULTATION (PAC) EVENT**

AquaMoor Ltd has been appointed as an agent to handle Marine License applications for clients planning to establish algal farms at the following locations: 56.598N 5.369W; 56.505N 5.454W; 56.495N 5.463W; 56.678N 6.003W & 56.925N 7.505W. Subject to licensing consent, these farms will be deployed in Q4 2020. PAC events would normally be held at a local Community Centre but due to Covid-19 restrictions they are to be held as an online consultation instead. The PAC event, including presentation of the prospective licence applications, will now be held as a Zoom Webinar from 13:00-16:00 on Thursday 2nd July. For further information regarding the planned activity please register for the PAC event or submit a comment by the 26th June by email to [licensing@aquamoort.co.uk](mailto:licensing@aquamoort.co.uk). Comments should not be sent to MS-LOT - there will be an opportunity for representations to be made to MS-LOT on the application.

**Proposed Division of the Croft by Owner-occupier Crofter**

Mary Keith is applying to divide the croft at Keills, Jura, into 6 new crofts.

Written comments from those with a relevant interest (which may be made public) to: Crofting Commission, Leachkin Road, Inverness IV3 8NW, [info@crofting.gov.scot](mailto:info@crofting.gov.scot) within 28 days from the date of this advert.

**Proposed Assignment of a Croft**

John Angus Gillies is applying to assign the tenancy of the croft at Fladda Island Croft, Fladda Island, Isle of Raasay to Mr John Cater of 3 Fladda Island, Isle of Raasay.

Written comments from those with a relevant interest (which may be public) to:- Crofting Commission, Leachkin road, Inverness, IV3 8NW, [info@crofting.gov.scot](mailto:info@crofting.gov.scot) by 18th June 2020.

**Fourteen years of digital archives Available to Digital subscribers**

**The Oban Times** & WEST HIGHLAND TIMES  
**LOCHABER TIMES** & OBAN TIMES

**Like**

like us on **facebook**

[www.facebook.com/obantimes](http://www.facebook.com/obantimes)

## PUBLIC NOTICES

**THE HIGHLAND COUNCIL  
B8006 LOCHYSIDE JUNCTION (WEST)  
(TEMPORARY ROAD CLOSURE) ORDER 2021**

Notice is hereby given that on 25th February 2021 The Highland Council made an Order in terms of section 14(1)(a) of the Road Traffic Regulation Act 1984, as amended entitled as above.

The Order has been made to provide the Network Rail with a safe working area whilst carrying out essential repairs at the level crossing.

The order shall come into operation at 10pm on Wednesday 24th March 2021 and will remain in effect until 6am on Thursday 25th March 2021. Throughout that period, the use by vehicles of the length of road specified in the Schedule hereto except for use by emergency services is prohibited each night between 10pm and 6am.

While the prohibition applies access will be maintained for emergency service vehicles. All other traffic may access Caol via the A830T/B8006 east junction, adjacent to Farmfoods.

A copy of the Order can be inspected via the council website. <http://www.hIGHLAND.gov.uk/troconsultations>

25 February 2021: Richard Porteous, Roads Operations Manager, Highland Council, Carr's Corner Industrial Estate, Fort William PH33 6TL.

**SCHEDULE**

Length of Road Affected

B8006 Lochyside

Commencing at the junction of the B8006/A830T west junction, extending in a southerly direction for 97 metres or thereby as shown coloured red on the plan annexed and signed as relative hereto.

**NOTICE OF PRE-APPLICATION  
CONSULTATION (PAC) EVENT**

Seaweed Farming Scotland Ltd is planning to establish two algal farms in the Firth of Lorn near Lismore (56°27.5'N 5°34.2'W) and Kerrera (56°21.47'N 5°35.47'W). Subject to licensing consent, these farms will be deployed in summer 2021. PAC events would normally be held at a local Community Centre but due to Covid restrictions they are to be held as an online consultation instead. The PAC event, including presentation of the prospective licence applications, will now be held as a Zoom Webinar from 14:00-16:00 on Thursday 15th April. For further information regarding the planned activity please register for the PAC event or submit a comment by the 14th April by email to [info@seaweedfarmingScotland.com](mailto:info@seaweedfarmingScotland.com). Comments should not be sent to MS-LOT - there will be an opportunity for representations to be made to MS-LOT on the application.



Blast site: **Banavie Quarry**  
**Fort William**

Date of Blast: **Thursday 4th March**

Time of Blast:

**12:00hrs – 14:00hrs**

**Argyll and Bute Council****PLANNING**

**TOWN AND COUNTRY PLANNING (SCOTLAND) ACT 1997,  
AS AMENDED ADVERTISEMENT UNDER SECTION 67(2) OF  
THE MAKING OF A REVOCATION ORDER OR MODIFICATION ORDER**

Planning Permission in Principle for erection of dwellinghouse AT:  
Land South Of Tigh Shee Ardun Isle of Mull Argyll And Bute

REFERENCE NUMBER: 19/00453/PPP

NOTICE IS HEREBY GIVEN that Argyll and Bute Council have made an order under section 65 of the Town and Country Planning (Scotland) Act 1997 to revoke the above planning permission.

The Council have been notified by the owner or lessee (if any); the occupier of the land, and all persons who in the Council's opinion will be affected by the Order that they do not object to the Order.

Any person who will be affected by the Order and who wishes for an opportunity of appearing before and being heard by a person appointed by the Scottish Ministers, must give notice in writing to The Scottish Ministers, Planning and Architecture Division, Planning Decisions, 2F (South), Victoria Quay, Edinburgh, EH6 6QU not later than 1st April 2021.

If no such notice is given by that date the Order will take effect by virtue of the provisions of Section 67(7) of the Town and Country Planning (Scotland) Act 1997 on 15th April 2021 without being confirmed by The Scottish Ministers.

Date 4th March 2021

David Logan, Head of Legal and Regulatory Support,

Argyll and Bute Council, Kilmory, Lochgilphead

To find out more about living and working in

Argyll & Bute visit us at:

[www.argyll-bute.gov.uk](http://www.argyll-bute.gov.uk)

Comhairle Earra – Ghàidheal agus Bhòid



Oban Times Oban Times  
RECRUITMENT RECRUITMENT

## RECRUITMENT

# DO YOU RUN A HOSPITALITY OR TOURISM BUSINESS? ARE YOU LOOKING TO RECRUIT?

We hope that soon, businesses like yours will once again be able to reopen and it looks like 'Staycation' is going to be the buzz word this season.

The Oban Times is offering very low cost advertising packages, combining the power of our newspapers, with the digital expertise of HIJOBS. Over 200,000 people in Scotland use HIJOBS every month.

**Find the right candidate quickly, in any corner of the country.**

For more information please get in touch.

Call Nicky on 01631 568014 or email [nmurphy@obantimes.co.uk](mailto:nmurphy@obantimes.co.uk)



**HIJOBS** The Oban Times **LOCHABER TIMES**  
Campbeltown **Courier** Argyllshire **Advertiser** Arran **Banner**

Subject **Zoom Invitation**

From



To

Date 02/06/2021 12:37

---

Topic: Seaweed Farming Scotland PAC event

Time: Jun 2, 2021 02:00 PM London

Join Zoom Meeting

<https://us02web.zoom.us/j/86282109788?pwd=Ulp6RitnQUk1Yy9SZ2NhL09NalkyQT09>

On 02/06/2021 11:08,

Hi

I hope all's good with you. I was just wondering if you might have a spare 5 minutes for a quick catch u soon?

Thanks,

**| Marine Sustainability Advisor – Aquaculture and Northwest Area**

**NatureScot** | Temporarily home-working | 0131 316 2695

nature.scot | @nature\_scot | *Scotland's Nature Agency* | *Buidheann Nàdair na h-Alba*



NatureScot is the operating name of Scottish Natural Heritage.

--

\*\*\*\*\*

This email and any files transmitted with it are confidential and intended solely for the use of the individual or entity to whom they are addressed. If you have received this email in error please notify the system manager or the sender.

Please note that for business purposes, outgoing and incoming emails from and to NatureScot may be monitored.

Tha am post-dealain seo agus fiosrachadh sam bith na chois dìomhair agus airson an neach no buidheann ainmichte a-mhàin. Mas e gun d' fhuair sibh am post-dealain seo le mearachd, cuiribh fios dhan manaidsear-siostaim no neach-sgrìobhaidh.

Thoiribh an aire airson adhbharan gnothaich, 's dòcha gun tèid sùil a chumail air puist-dealain a' tighinn a-steach agus a' dol a-mach bho NatureScot.

\*\*\*\*\*

Subject **Re: Entanglement meeting**

From



To

Date 29/06/2021 10:46

---

Hi

Hope the following is of some help for you to find a good viewpoint for the farm at Aird na Cuile.

Farm site location is:

<https://w3w.co/exotic.snores.surcharge>

View point walking from Lergas would be somewhere near here:

<https://w3w.co/snowmen.satellite.cosmetic>

Viewpoint walking from Gallanach would be somewhere near here:

<https://w3w.co/hitters.prepare.redeemed>

I'm available w/c 12th July so happy to meet with some of your team then and also happy to provide some photo's of working at sea on a seaweed farm.

Enjoy the good weather!

Kind regards

On 29/06/2021 09:36,

Hi

I'm not sure whether you sent this by mistake or the text has somehow disappeared? Either way it would be good to pick up on this at some point soon if you have a chance.

Thanks,

---

**From:**

**Sent:** 28 June 2021 15:25

**To:**

**Subject:** Re: Entanglement meeting

On 08/06/2021 10:44,

Hi

Further to our recent discussion, it would be good to arrange a meeting to discuss entanglement consideration farms. I contacted [redacted] also keen to attend so it would most likely be myself, [redacted] and a couple of other NatureScot who have involvement in cetaceans and / or entanglement issues.

It would be great if you could help us understand more about a) the various different equipment configurations currently in use / could be used b) the measures employed to ensure that each configuration remains tensioned while growing and while not in use – thereby reducing risk. If possible it would be useful to have some diagrams to hand around each layout / configuration – even if it's just hand drawn diagrams for the moment. It would also be useful to explain what is equipment left in the water when the growing lines are removed and also to touch on productivity etc, as this will all be relevant to entanglement considerations.

We would also be happy to discuss the idea of producing some best practice guidelines to help set all of this out for both existing and prospective operators and also for regulators and other key stakeholders.

If you would be happy to meet to discuss this further then let me know when would be good for you. I think Eilish next week but any time after that would be fine.

Hope to hear from you soon.

**| Marine Sustainability Advisor – Aquaculture and Northwest Area**

**NatureScot** | Temporarily home-working | 0131 316 2695

nature.scot | @nature\_scot | *Scotland's Nature Agency* | *Buidheann Nàdair na h-Alba*

NatureScot is the operating name of Scottish Natural Heritage.

--

\*\*\*\*\*  
This email and any files transmitted with it are confidential and intended solely for the use of the individual or entity to whom they are addressed. If you have received this email in error please notify the system manager or the sender.


Please note that for business purposes, outgoing and incoming emails from and to NatureScot may be monitored.

Tha am post-dealain seo agus fiosrachadh sam bith na chois diomhair agus airson an neach no buidheann ainmichte a-mhàin. Mas e gun d' fhuair sibh am post-dealain seo le mearachd, cuiribh fios dhan manaidsear-siostaim no neach-sgrìobhaidh.

Thoiribh an aire airson adhbharan gnothaich, 's dòcha gun tèid sùil a chumail air puist-dealain a' tighinn a-steach agus a' dol a-mach bho NatureScot.

\*\*\*\*\*



Subject **RE: Pre-Application Consultation on AtoN Requirements in Argyll**  
From   
To  
Date 16/08/2021 12:24

---

---

Good morning

Apologies for the delay in my response to you.

Thank you for sending through the information on your trial seaweed sites.

Having assessed the proposed locations, I can offer the following comments/ navigational requirements

All sites will require navigational marking in the form of yellow Lit Special Mark Buoys (LSMB's) with yell  
Please note: the conditions below are not to be taken as a formal response, and although unlikely, may  
change once I receive the official Council Planning and Marine Licence applications.

- **Eriska Shoal:** Will require 2 LSMB's; displaying a character of FI Y 5s, positioned at the South seaward corners of the longline.
- **Lismore:** Will require 2 LSMB's; displaying a character of FI (4) Y 12s, positioned at the Northeastern and Southwestern seaward corners of the Longline.
- **Loch Feochan:** Most likely will require a LSMB; displaying a character of FI Y 5s, positioned at the Southwestern seaward corner of the longline. This may require a second, due to the mariner at Ardoran, but I will assess further official applications.
- **Shuna:** Will require 2 LSMB's: displaying a character of FI Y 5s, positioned at the South seaward corners of the longline.

All the above sites can be marked with a 1000mm diameter buoy, as is standard practice for aquaculture. They will require to have a nominal range of 2 nautical miles (again, standard practice).

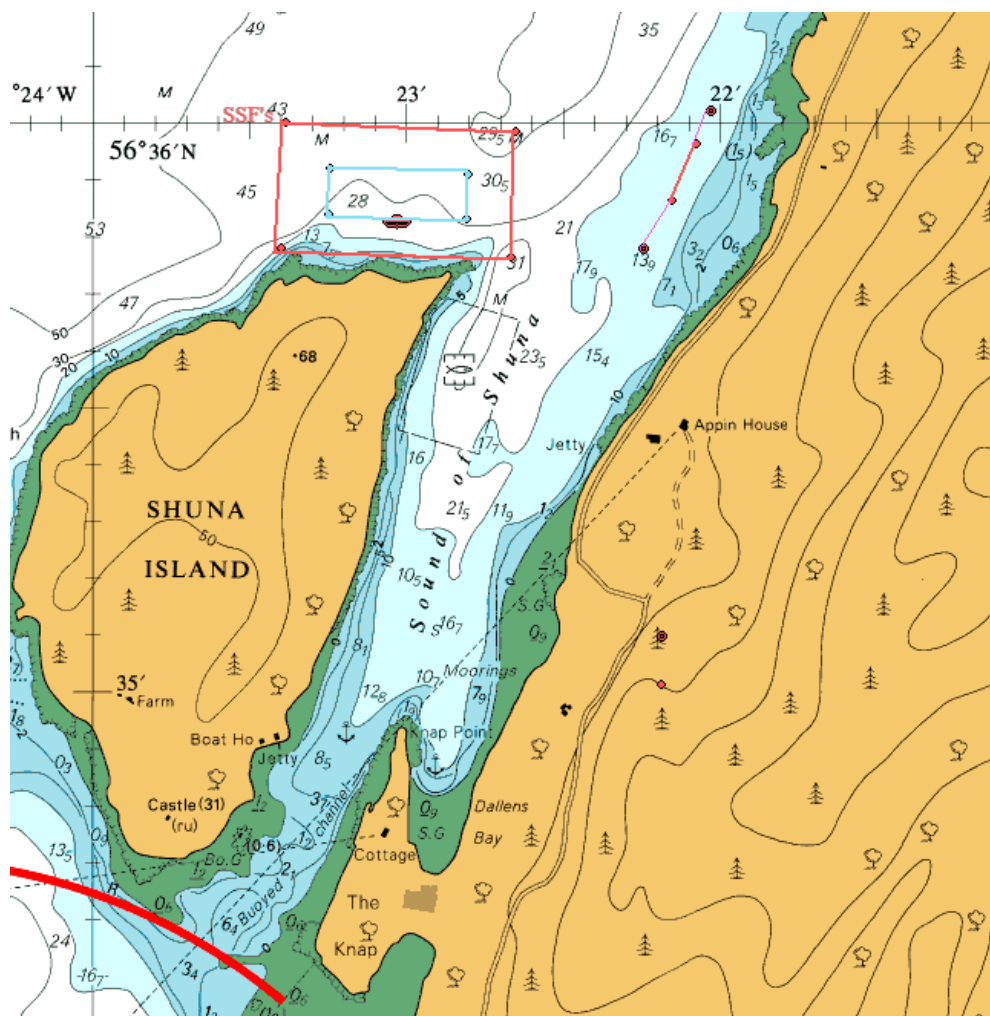
- **South of Kerrera:** Will require 2 LSMB's: displaying a character of FI (4) Y 12s, positioned at the Northeastern and Southwestern corners of the longline, a radar reflector, and Cat 2 navigation lights. Kerrera will require 1500mm

In addition, as the above are pilot locations, presumably with your intention to deploy full scale sites based on the outcome(s) of the trial, it is pertinent for me to raise the following for your awareness;

**Loch Feochan:** There would be limited room to expand in this location, certainly to the West.

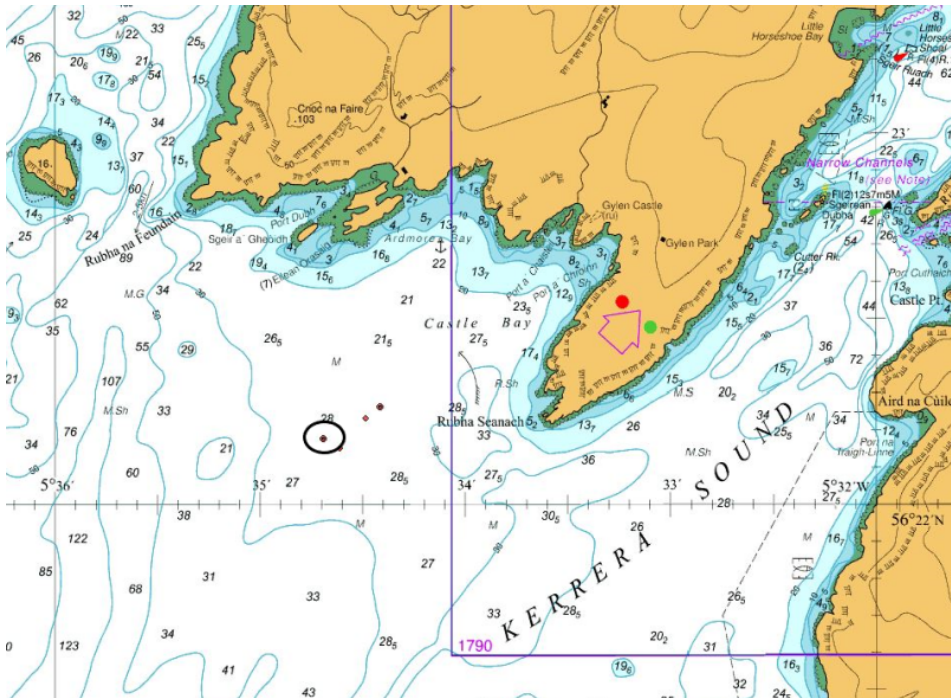
**South of Kerrera:** A full scale site in this location will require more significant navigational marking in the form of cardinal marks. A thorough NRA (Navigational Risk Assessment) may be required.

**Shuna:** Scottish Sea Farms are relocating their finfish farm to the North of the island (having been processed both PP and ML within the past few months). Thus, we would not agree to further expansion here beyond the single trial line. Appreciate this may come as a surprise.



An additional note FYI : The licence co-ordinates of the mooring points for Eriska, Shuna and Kerrera in charts you supplied are incorrect– please see below:





Appreciate, this is lengthy and somewhat of an information overload, so more than happy to talk things phone or virtually (MS Team/Zoom) if it is easier.

Hope this helps.

Kind regards,

#### Official - Northern Lighthouse Board Email

#### Coastal Inspector

Navigation Team, 84 George Street, Edinburgh, EH2 3DA

0131 473 3155,

[www.nlb.org.uk](http://www.nlb.org.uk)



**Our mission:** To deliver in the most sustainable way practicable, a reliable, efficient and cost-effective A service for the benefit and safety of all Mariners.



---

**From:**

**Sent:** 10 August 2021 11:03

**To:**

**Subject:** Pre-Application Consultation on AtoN Requirements in Argyll

Dear

Further to our conversation this morning, please find attached information on the 5 pilot sites that we are planning to deploy this year. These deployments will be operated to establish the quantity of seaweed species that can be grown at each site.

The first attachment shows the general locations and the other 5 files show the specific locations of the pilot long line with co-ordinates of moorings and cushion buoys. I don't believe that the sites at Eriska or Feochan will present any risk to navigation due to their positioning. It is our intention to focus on the sites at Lismore and Kerrera due to their more exposed nature.

I would welcome your comments on the requirement or otherwise for Navigation marks at the sites and in particular for the sites at Lismore and Kerrera, your recommendations as to where additional marks should be located.

Many thanks & Best Regards

---

**Founder / CEO**



**Seaweed Farming Scotland Limited**

9A Bankhead Medway  
Edinburgh  
EH11 4BY  
Scotland, UK

[www.seaweedfarmingscotland.com](http://www.seaweedfarmingscotland.com)

recommend that you subject your own communications to virus checking procedures. This footnote also email message has been swept for the presence of computer viruses, spam and other unacceptable con

Click [here](#) to report this email as spam.

This email has been virus scanned by MailControl - [www.mailcontrol.com](http://www.mailcontrol.com)

Subject **Zoom Meeting Invitation**

From



To

Date 19/04/2021 10:53

---

Topic: My Meeting

Time: Apr 19, 2021 11:00 AM London

Join Zoom Meeting

<https://us02web.zoom.us/j/89920064948?pwd=d3hDUjUyZThpL29CWES0VEVTRlo2QT09>

On 15/04/2021 18:33,

Hello

11:00 on Monday 19th is perfect.

Look forward to seeing you.

Very best regards

Sent from my iPhone

On 15 Apr 2021, at 18:13,

Thanks

Could we schedule call for 1100 on Monday 19th?

Best regards

Sent from my Galaxy

----- Original message -----

From:

Date: 15/04/2021 15:54 (GMT+00:00)

To:

Subject: Re: RE-ISSUE - PAC Event - Seaweed Farming Scotland Zoom Meeting Today

Helic

Thank you for your response. I am available on Monday 19th anytime, Tuesday 20th morning only or Wednesday morning only.

I would be most interested to learn more of your proposals

Very best regards

Chair, WCRIFG

On Thursday, 15 April 2021, 13:38:00 BST,

Hello

Thanks for your response. I would be happy to arrange a suitable time to review this with you on a 1 to 1 basis.

Regards

On 15/04/2021 13:16,

Hello

Thank you for your invite  
, however I can't manage this afternoon

Very best regards

Chair WCRIFG

Sent from my iPhone

On 15 Apr 2021, at 13:00,

Please find a link below inviting you to a scheduled Zoom meeting.

Topic: Seaweed Farming Scotland Pre Application Consultation event  
Time: Apr 15, 2021 02:00 PM London

Join Zoom Meeting  
<https://us02web.zoom.us/j/84690960009?pwd=bnZqQkpkSIFlWkJKYkdRDFkNjRpQT09>


If you are unable to attend the consultation please email me directly with any queries. The presentation will be posted on Seaweed Farming Scotland's website following the event.

--

**Director**

**AquaMoor Limited**  
[www.aquamoor.co.uk](http://www.aquamoor.co.uk)

This email and any files transmitted with it are 'confidential' and intended solely for the use of the individual or entity to whom they are addressed. The unauthorised use, disclosure, copying or alteration of this message is 'strictly' forbidden. If you have received this email in error please notify the sender and AquaMoor postmaster [accounts@aquamoor.co.uk](mailto:accounts@aquamoor.co.uk). We may monitor all communications through our network. If you contact us, we may store your name and address to facilitate communication with you. Any views expressed in this message are those of the individual sender, except where the message explicitly states otherwise. We take reasonable precautions to ensure our communications are virus free. However, we cannot accept responsibility for any virus transmitted by us and recommend that you subject your own communications to virus checking procedures. This footnote also confirms that this email message has been swept for the presence of computer viruses, spam and other unacceptable content.

Subject **Re: RE-ISSUE - PAC Event - Seaweed Farming Scotland Zoom Meeting Today**  
From   
To  
Date 15/04/2021 18:13

---

Thanks  
Could we schedule call for 1100 on Monday 19th?  
Best regards

Sent from my Galaxy

---

Thanks Could we schedule call for 1100 on Monday 19th?Best

---

----- Original message -----

From:  
Date: 15/04/2021 15:54 (GMT+00:00)  
To:  
Subject: Re: RE-ISSUE - PAC Event - Seaweed Farming Scotland Zoom Meeting Today

Hello

Thank you for your response. I am available on Monday 19th anytime, Tuesday 20th morning only or Wednesday morning only.

I would be most interested to learn more of your proposals

Very best regards

Chair, WCRIFG

On Thursday, 15 April 2021, 13:38:00 BST,

Hello

Thanks for your response. I would be happy to arrange a suitable time to review this with you on a 1 to 1 basis.

Regards

On 15/04/2021 13:16,

Hello

Thank you for your invite  
, however I can't manage this afternoon

Very best regards

Chair WCRIFG

Sent from my iPhone

On 15 Apr 2021, at 13:00,

Please find a link below inviting you to a scheduled Zoom meeting.

Topic: Seaweed Farming Scotland Pre Application Consultation event  
Time: Apr 15, 2021 02:00 PM London

Join Zoom Meeting  
<https://us02web.zoom.us/j/84690960009?pwd=bnZqQkpkSIFlWkJKYkdtRDFkNjRpQT09>



==

**AquaMoor Limited**  
[www.aquamoor.co.uk](http://www.aquamoor.co.uk)

----- Original message -----From: [\[mailto:scott@seaweed.com\]](#) Date: 15/04/2021 15:54 (GMT+00:00) To: [\[mailto:scott@seaweed.com\]](#)  
Subject: Re: RE-ISSUE - PAC Event - Seaweed Farming Scotland Zoom Meeting

Today Hello .Thank you for your response. I am available on Monday 19th anytime, Tuesday 20th morning only or Wednesday morning only.I would be most interested to learn more of your proposalsVery best

Join Zoom Meeting

<https://us02web.zoom.us/j/84690960009?pwd=bnZqQkpkSlFlWkJKYkdtRDFkNjRpQT09>

If you are unable to attend the consultation please email me directly with any queries. The presentation will be posted on Seaweed Farming Scotland's website following the event.--

This email and any files transmitted with it are 'confidential' and intended solely for the use of the individual or entity to whom they are addressed. The unauthorised use, disclosure, copying or alteration of this message is 'strictly' forbidden. If you have received this email in error please notify the sender and AquaMoor postmaster [accounts@aquamoor.co.uk](mailto:accounts@aquamoor.co.uk). We may monitor all communications through our network. If you contact us, we may store your name and address to facilitate communication with you. Any views expressed in this message are those of the individual sender, except where the message explicitly states otherwise. We take reasonable precautions to ensure our communications are virus free. However, we cannot accept responsibility for any virus transmitted by us and recommend that you subject your own communications to virus checking procedures. This footnote also confirms that this email message has been swept for the presence of computer viruses, spam and other unacceptable content.

**From:**  
**To:**  
**Subject:** Re: 00010118, 00010119, 00010120 & 00010121 - Seaweed Farming Scotland Ltd - Algal Farms - Various Locations  
**Date:** 13 January 2023 13:38:35  
**Attachments:** [Sebb8213.png](#)

---

Good afternoon

Thanks for your email. The three species that will be cultivated at these sites are *Alaria esculenta*, *Saccharina latissima* and *Laminaria digitata* and the intention is to use the crop for food and pharmaceutical applications.

Kind regards

---

**Founder / CEO**



**Seaweed Farming Scotland Limited**

9A Bankhead Medway  
Edinburgh  
EH11 4BY  
Scotland, UK

[www.seaweedfarmingscotland.com](http://www.seaweedfarmingscotland.com)

This email and any files transmitted with it are 'confidential' and intended solely for the use of the individual or entity to whom they are addressed. The unauthorised use, disclosure, copying or alteration of this message is 'strictly' forbidden. If you have received this email in error please notify the sender and Seaweed Farming Scotland postmaster [info@seaweedfarmingscotland.com](mailto:info@seaweedfarmingscotland.com). We may monitor all communications through our network. If you contact us, we may store your name and address to facilitate communication with you. Any views expressed in this message are those of the individual sender, except where the message explicitly states otherwise. We take reasonable precautions to ensure our communications are virus free. However, we cannot accept responsibility for any virus transmitted by us and recommend that you subject your own communications to virus checking procedures. This footnote also confirms that this email message has been swept for the presence of computer viruses, spam and other unacceptable content.

On 13/01/2023 13:00,

Good afternoon

I am the licensing casework officer that has been assigned to process the above applications. Please can you advise of the species of seaweed that is to be cultivated at each of these sites? Also, whilst I appreciate that these are trial sites, please can you advise as to whether the intention would be to utilise seaweed harvested from each of these sites for food or for use in pharmaceuticals.

Kind regards,

Marine Licensing Casework Officer

**Marine Scotland** - Marine Planning & Policy

Scottish Government | Marine Laboratory | 375 Victoria Road | Aberdeen | AB11 9DB

General Email: [MS.marinelicensing@gov.scot](mailto:MS.marinelicensing@gov.scot)

Website: <http://www.gov.scot/Topics/marine/Licensing/marine>

***COVID-19: Marine Scotland - Licensing Operations Team( MS-LOT) is working from home and as a result determination of applications may take longer than our stated timelines. In addition MS-LOT is unable to respond to phone enquiries, please communicate with MS- LOT via email. Email addresses are [MS.MarineRenewables@gov.scot](mailto:MS.MarineRenewables@gov.scot) for marine renewables correspondence or [MS.MarineLicensing@gov.scot](mailto:MS.MarineLicensing@gov.scot) for all licensing queries.***

\*\*\*\*\*

This e-mail (and any files or other attachments transmitted with it) is intended solely for the attention of the addressee(s). Unauthorised use, disclosure, storage, copying or distribution of any part of this e-mail is not permitted. If you are not the intended recipient please destroy the email, remove any copies from your system and inform the sender immediately by return.

Communications with the Scottish Government may be monitored or recorded in order to secure the effective operation of the system and for other lawful purposes. The views or opinions contained within this e-mail may not necessarily reflect those of the Scottish Government.

\*\*\*\*\*