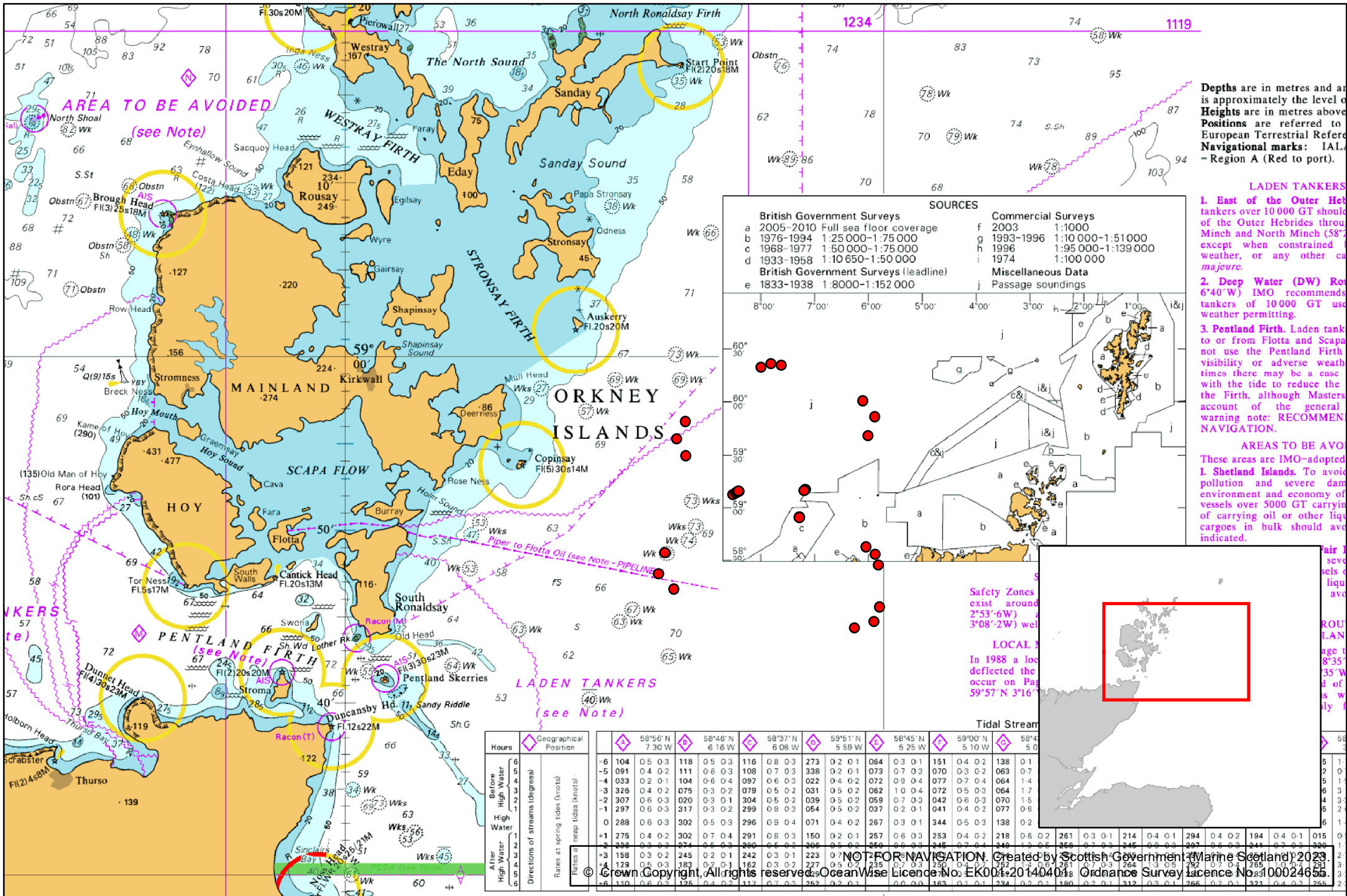


Annex One to EPS/BS-00010227

Chart showing location of Licensed Activity



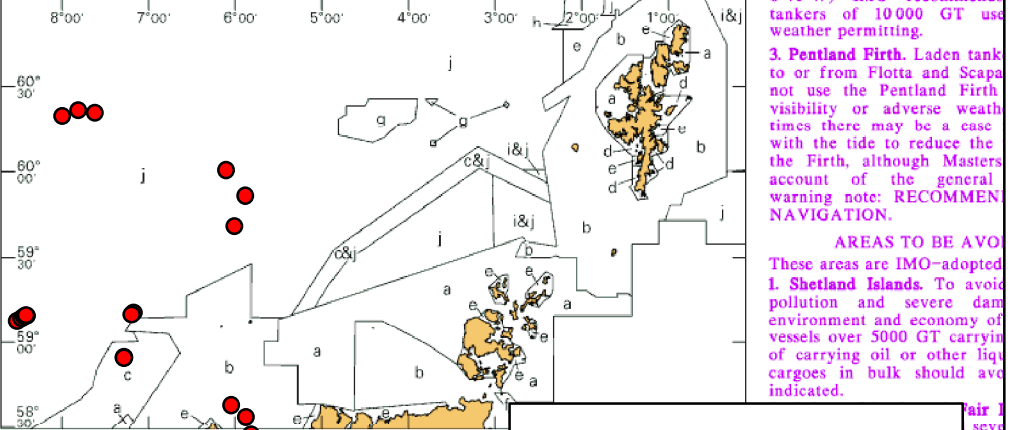
Depths are in metres and are approximately the level of Heights are in metres above Positions are referred to European Terrestrial Reference Navigational marks: IALA - Region A (Red to port).

SOURCES

British Government Surveys	Commercial Surveys
a 2005-2010 Full sea floor coverage	f 2003 1:1000
b 1976-1994 1:25 000-1:75 000	g 1993-1996 1:10 000-1:51 000
c 1968-1977 1:50 000-1:75 000	h 1996 1:95 000-1:139 000
d 1933-1958 1:10 650-1:50 000	i 1974 1:100 000
British Government Surveys (leadline)	Miscellaneous Data
e 1833-1938 1:8000-1:152 000	j Passage soundings

1. East of the Outer Hebrides tankers over 10 000 GT should of the Outer Hebrides through Minch and North Minch (58°), except when constrained by weather, or any other cause majeure.
2. Deep Water (DW) Row (6°40'W) IMO recommends tankers of 10 000 GT use weather permitting.
3. Pentland Firth. Laden tank to or from Flotta and Scapa not use the Pentland Firth, visibility or adverse weather times there may be a case with the tide to reduce the the Firth, although Masters account of the general warning note: RECOMMEN NAVIGATION.

AREAS TO BE AVOIDED
These areas are IMO-adopted 1. Shetland Islands. To avoid pollution and severe damage environment and economy of vessels over 5000 GT carrying of carrying oil or other liquid cargoes in bulk should avoid indicated.



Hours	Geographical Position	58°56' N 7 30 W	58°48' N 6 16 W	58°37' N 6 08 W	59°51' N 5 59 W	58°45' N 5 25 W	59°00' N 5 10 W	58°44' N 5 0							
Before High Water	Directions of streams (degrees)	-6 104	0 5 0 3	118	0 5 0 3	116	0 8 0 3	273	0 2 0 1	064	0 3 0 1	151	0 4 0 2	138	0 1
High Water	Rates at spring tides (knots)	-5 091	0 4 0 2	111	0 6 0 3	108	0 7 0 3	338	0 2 0 1	073	0 7 0 3	070	0 3 0 2	063	0 7
After High Water	Rates at neap tides (knots)	-4 033	0 2 0 1	104	0 6 0 4	097	0 6 0 3	022	0 4 0 2	072	0 9 0 4	077	0 7 0 4	064	1 4
High Water	Directions of streams (degrees)	-3 326	0 4 0 2	075	0 3 0 2	079	0 5 0 2	031	0 5 0 2	062	1 0 0 4	072	0 5 0 3	064	1 7
Before High Water	Rates at spring tides (knots)	-2 307	0 6 0 3	020	0 3 0 1	304	0 5 0 2	039	0 5 0 2	069	0 7 0 3	042	0 6 0 3	070	1 5
High Water	Rates at neap tides (knots)	-1 297	0 6 0 3	317	0 3 0 2	299	0 8 0 3	054	0 5 0 2	037	0 2 0 1	041	0 4 0 2	077	0 8
After High Water	Directions of streams (degrees)	0 288	0 6 0 3	302	0 5 0 3	296	0 9 0 4	071	0 4 0 2	067	0 3 0 1	344	0 5 0 3	138	0 2
Before High Water	Rates at spring tides (knots)	+1 275	0 4 0 2	302	0 7 0 4	291	0 8 0 3	150	0 2 0 1	257	0 6 0 3	253	0 4 0 2	218	0 6 0 2
High Water	Rates at neap tides (knots)	2 338	0 3 0 2	274	0 5 0 3	260	0 5 0 3	266	0 5 0 3	246	0 7 0 3	246	0 5 0 3	207	0 3 0 3
After High Water	Directions of streams (degrees)	+2 158	0 3 0 2	245	0 2 0 1	242	0 3 0 1	223	0 7 0 3	207	0 5 0 2	207	0 3 0 3	214	0 4 0 1
Before High Water	Rates at spring tides (knots)	1 129	0 5 0 3	183	0 9 0 1	162	0 3 0 3	277	0 5 0 2	235	0 7 0 3	264	0 7 0 4	265	0 3
High Water	Rates at neap tides (knots)	1 110	0 6 0 3	125	0 4 0 2	117	0 7 0 3	252	0 2 0 1	163	0 1 0 1	234	0 2 0 1	180	0 2 0 1
After High Water	Directions of streams (degrees)	2 110	0 6 0 3	125	0 4 0 2	117	0 7 0 3	252	0 2 0 1	163	0 1 0 1	234	0 2 0 1	180	0 2 0 1