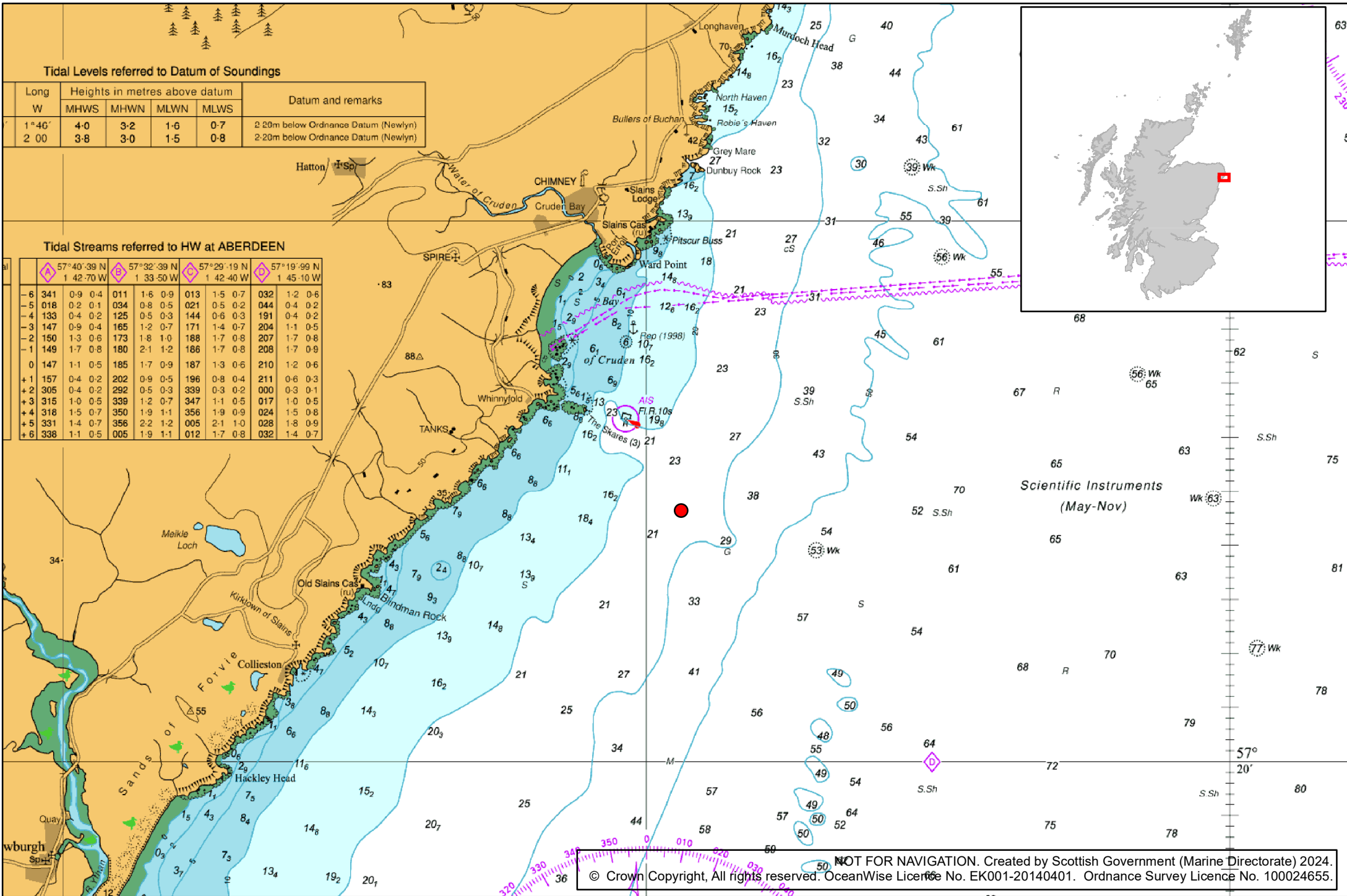


ANNEX ONE to Marine Licence MS-00010601
 Chart showing the location of Licensed Activity



Tidal Levels referred to Datum of Soundings

| Long W | Heights in metres above datum | | | | Datum and remarks |
|-------------|-------------------------------|------|------|------|-------------------------------------|
| | MHWS | MHWN | MLWN | MLWS | |
| 1° 46' 2 00 | 4.0 | 3.2 | 1.6 | 0.7 | 2.20m below Ordnance Datum (Newlyn) |
| | 3.8 | 3.0 | 1.5 | 0.8 | 2.20m below Ordnance Datum (Newlyn) |

Tidal Streams referred to HW at ABERDEEN

| Lat | 57° 40' 39" N 1 42.70 W | | 57° 32' 39" N 1 33.50 W | | 57° 29' 19" N 1 42.40 W | | 57° 19' 99" N 1 45.10 W | |
|-----|----------------------------|---------|----------------------------|---------|----------------------------|---------|----------------------------|---------|
| | -6 | 341 | 0.9 0.4 | 011 | 1.6 0.9 | 013 | 1.5 0.7 | 032 |
| -5 | 018 | 0.2 0.1 | 034 | 0.8 0.5 | 021 | 0.5 0.2 | 044 | 0.4 0.2 |
| -4 | 133 | 0.4 0.2 | 125 | 0.5 0.3 | 144 | 0.6 0.3 | 191 | 0.4 0.2 |
| -3 | 147 | 0.9 0.4 | 165 | 1.2 0.7 | 171 | 1.4 0.7 | 204 | 1.1 0.5 |
| -2 | 150 | 1.3 0.6 | 173 | 1.8 1.0 | 188 | 1.7 0.8 | 207 | 1.7 0.8 |
| -1 | 149 | 1.7 0.8 | 180 | 2.1 1.2 | 186 | 1.7 0.8 | 208 | 1.7 0.9 |
| 0 | 147 | 1.1 0.5 | 185 | 1.7 0.9 | 187 | 1.3 0.6 | 210 | 1.2 0.6 |
| +1 | 157 | 0.4 0.2 | 202 | 0.9 0.5 | 196 | 0.8 0.4 | 211 | 0.6 0.3 |
| +2 | 305 | 0.4 0.2 | 292 | 0.5 0.3 | 339 | 0.3 0.2 | 000 | 0.3 0.1 |
| +3 | 315 | 1.0 0.5 | 339 | 1.2 0.7 | 347 | 1.1 0.5 | 017 | 1.0 0.5 |
| +4 | 318 | 1.5 0.7 | 350 | 1.9 1.1 | 356 | 1.9 0.9 | 024 | 1.5 0.8 |
| +5 | 331 | 1.4 0.7 | 356 | 2.2 1.2 | 005 | 2.1 1.0 | 028 | 1.8 0.9 |
| +6 | 338 | 1.1 0.5 | 005 | 1.9 1.1 | 012 | 1.7 0.8 | 032 | 1.4 0.7 |

NOT FOR NAVIGATION. Created by Scottish Government (Marine Directorate) 2024.
 © Crown Copyright, All rights reserved. OceanWise Licence No. EK001-20140401. Ordnance Survey Licence No. 100024655.