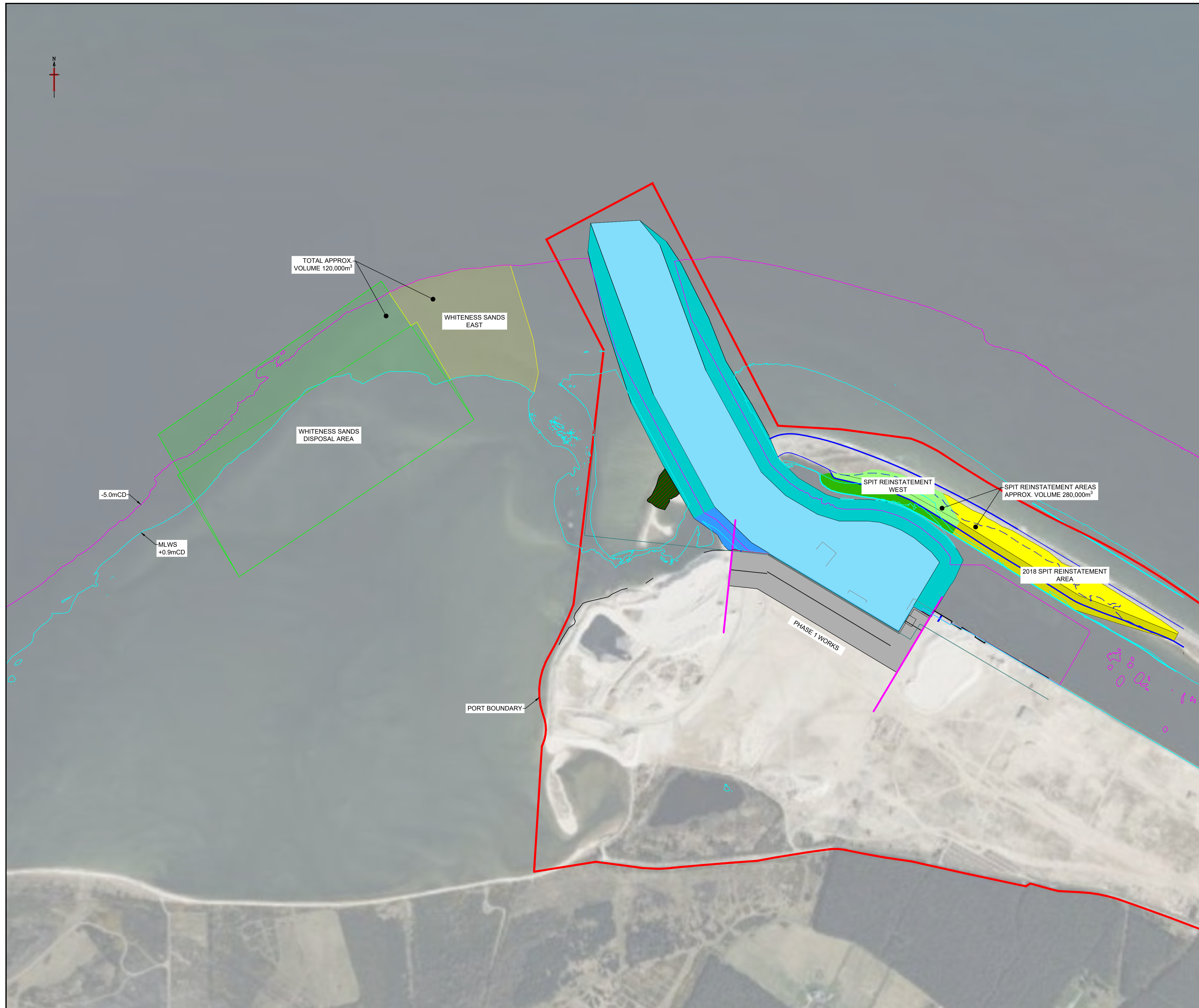


Figure 2. Beneficial reuse of dredge material at Whiteness Head Spit (Drawing Reference Number: ArdPhase1-HAV-WP3-ZZ-DR-C-0006)



- NOTES:
1. DO NOT SCALE FROM THIS DRAWING.
  2. ALL DIMENSIONS ARE IN METRES UNLESS STATED OTHERWISE.
  3. ALL LEVELS ARE GIVEN IN METRES ABOVE CHART DATUM (m ACD). CORRECTION FOR ORDNANCE DATUM IS -2.14m (RELATIVE TO ORDNANCE DATUM AT NEWLYN).

Rev	Rev. Date	Purpose of revision	Drawn	Checked	Rev'd
P01	18/04/2024	FOR INFORMATION			



Project  
**ARDERSIER PORT REDEVELOPMENT PHASE 1**

Drawing title  
**BENEFICIAL REUSE AREAS FOR CROWN ESTATES**

Drawing status  
**FOR INFORMATION**

Scale: 1:5000 @A1 DO NOT SCALE  
 Drawing number: ArdPhase1-HAV-WP3-ZZ-DR-C-0006 Rev: P01

© Copyright 2024 Haventus. This drawing has been prepared by Haventus for the Ardersier Port Redevelopment project's exclusive use. It is not intended for use by any other person or any other purpose. Haventus accepts no liability or responsibility whatsoever for, or in respect of, any use of, or reliance upon, this drawing by any third party.

Figure 3. Land storage area bund (Applicant drawing reference number 670191-018)

