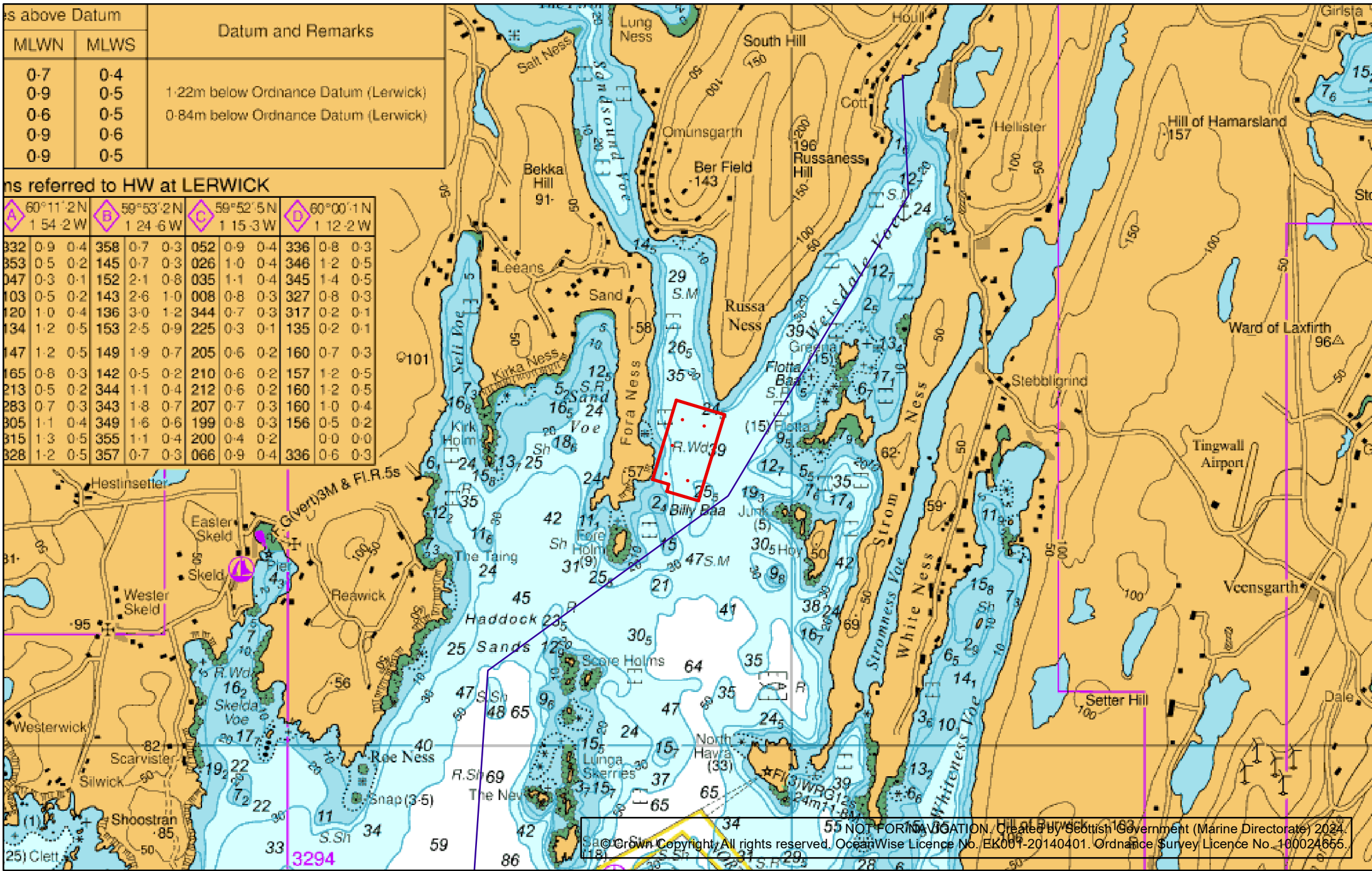


ms above Datum		Datum and Remarks
MLWN	MLWS	
0.7	0.4	1.22m below Ordnance Datum (Lerwick) 0.84m below Ordnance Datum (Lerwick)
0.9	0.5	
0.6	0.5	
0.9	0.6	
0.9	0.5	

ns referred to HW at LERWICK

A 60°11'2"N 1 54.2 W			B 59°53'2"N 1 24.6 W			C 59°52'5"N 1 15.3 W			D 60°00'1"N 1 12.2 W		
332	0.9	0.4	358	0.7	0.3	052	0.9	0.4	336	0.8	0.3
353	0.5	0.2	145	0.7	0.3	026	1.0	0.4	346	1.2	0.5
047	0.3	0.1	152	2.1	0.8	035	1.1	0.4	345	1.4	0.5
103	0.5	0.2	143	2.6	1.0	008	0.8	0.3	327	0.8	0.3
120	1.0	0.4	136	3.0	1.2	344	0.7	0.3	317	0.2	0.1
134	1.2	0.5	153	2.5	0.9	225	0.3	0.1	135	0.2	0.1
147	1.2	0.5	149	1.9	0.7	205	0.6	0.2	160	0.7	0.3
165	0.8	0.3	142	0.5	0.2	210	0.6	0.2	157	1.2	0.5
213	0.5	0.2	344	1.1	0.4	212	0.6	0.2	160	1.2	0.5
283	0.7	0.3	343	1.8	0.7	207	0.7	0.3	160	1.0	0.4
305	1.1	0.4	349	1.6	0.6	199	0.8	0.3	156	0.5	0.2
315	1.3	0.5	355	1.1	0.4	200	0.4	0.2	0.0	0.0	0.0
328	1.2	0.5	357	0.7	0.3	066	0.9	0.4	336	0.6	0.3



55 NOT FOR NAVIGATION, Created by Scottish Government (Marine Directorate) 2024.  
 © Crown Copyright. All rights reserved. OceanWise Licence No. EK001-20140401. Ordnance Survey Licence No. 100024656.