

Northern Lighthouse Board

CAPTAIN PHILLIP DAY
DIRECTOR OF MARINE OPERATIONS

Your Ref: LF00005-LET-241-BOWL (NSP)
Our Ref: AJ/OPS/ML/O6_01_287

Ms Jessica Drew
Marine Licensing Casework Officer
Marine Scotland – Marine Planning and Policy
Marine Laboratory
375 Victoria Road
Aberdeen
AB11 9DB

84 George Street
Edinburgh EH2 3DA
Switchboard: 0131 473 3100
Fax: 0131 220 2093
Website: www.nlb.org.uk
Email: enquiries@nlb.org.uk



25 October 2015

Dear Jessica,

**BOWL SECTION 36 Consent Condition 18 (Partial) and the Marine Licence
(Offshore Transmission Works) Condition 3.2.2.9 (Partial) – Navigational
Safety Plan (NSP)**

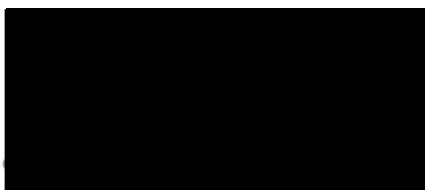
Thank you for your correspondence dated 02 October 2015 regarding the submission of the proposed post-consent Navigation Safety Plan (NSP) to satisfy the above conditions of consent by **Beatrice Offshore Windfarm Limited** to install and operate wind turbines, offshore sub-stations and the associated electrical interconnecting and export cables at their wind farm site in the outer Moray Firth.

We note that the Navigational Safety Plan for the site will be for two of the three phases of the wind farm life, namely the construction and operational phases and that the Emergency Response Co-operation Plan (ERCoP) will be submitted approximately 6 months prior to the commencement of the construction phase.

NLB would require to be consulted on the ERCoP for the wind farm and any additional Navigational Safety Plan submitted relating to the de-commissioning phase.

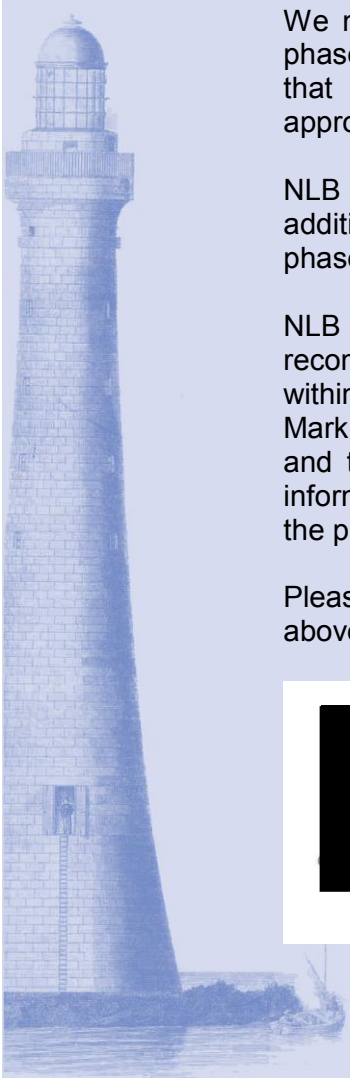
NLB are content with the proposals within the Navigational Safety Plan and that recommendations for the marking and lighting for the construction phase contained within the document are consistent with that of the previously submitted Lighting and Marking Plan (LMP). We will continue with the regular communications with BOWL and their representatives as the project progresses to ensure the mariner is best informed of the works and any location of operations being carried out in relation to the project.

Please advise if we can be of any further assistance, or require clarification any of the above.



the safety of

to: ISO 9001:2000 · The International Safety Management Code (ISM) · OHSAS



Dinsdale R (Rosanne)

From: Nick Salter <Nick.Salter@mcga.gov.uk>
Sent: 15 October 2015 13:45
To: Drew J (Jessica)
Cc: Bain N (Nicola) (MARLAB); Ford A (Alexander)
Subject: RE: BOWL Navigational Safety Plan
Attachments: LF000005-PLN-128 Beatrice Navigational Safety Plan v1_NS_Comments_15.10.....pdf

Dear Jessica,

Please find attached the NSP with my comments. In the main I'm pretty content - just minor amendments really.

Could you please confirm in which of BOWL's plans they will/have include post-construction surveys? We have a requirement for bathymetric surveys to be carried out following installation of generation and transmission works but I don't think I have seen any confirmation yet. I might be wrong...

Best regards,

Nick

Nick Salter
Offshore Renewables Advisor
Navigation Safety Branch
Maritime and Coastguard Agency
Tel: 023 8032 9448
Mob: [REDACTED]
Email: nick.salter@mcga.gov.uk

From: navigationsafety
Sent: 02 October 2015 11:02
To: Nick Salter
Subject: FW: BOWL Navigational Safety Plan

Nick Salter
Offshore Renewables Advisor
Navigation Safety Branch
Maritime and Coastguard Agency
Tel: 023 8032 9448
Mob: [REDACTED]
Email: nick.salter@mcga.gov.uk

From: Jessica.Drew@gov.scot [<mailto:Jessica.Drew@gov.scot>]
Sent: 02 October 2015 09:12
To: navigation@nlb.org.uk; navigationsafety
Subject: BOWL Navigational Safety Plan

Dear Sir/Madam

Please find attached a proposed post-consent 'Navigational Safety Plan ("NSP") (Revision 01, Issued on 30/09/2015) and covering letter addressed to Marine Scotland Licensing Operations Team ("MS-LOT") from BOWL.

The purpose of the NSP is to attempt to partially satisfy the requirement of condition 18 of the section 36 consent awarded to BOWL in March 2014; and condition 3.2.2.9 of the associated BOWL Offshore Transmission Works marine licence issued in September 2014. At this stage the NSP contains neither part 'f' of condition 18 of the section 36 consent nor part 'f' of condition 3.2.2.9 of the associated BOWL Offshore Transmission Works marine licence issued in September 2014.

Please find a link to the relevant documents which are online.
(<http://www.gov.scot/Topics/marine/Licensing/marine/scoping/Beatrice>).

The conditions state that the plan is to be submitted to the Scottish Ministers for their written approval; following a consultation with the Maritime and Coastguard Association and the Northern Lighthouse Board. MS-LOT hereby asks each stakeholder to review the attached plan in order to determine whether it is fit for purpose for the Scottish Ministers to give it their written approval.

Please can each stakeholder review the NSP by **Wednesday the 28th October**. MS-LOT welcomes any comments each stakeholder may have. If you wish to submit comments, please reply to this email or to ms.marinelicensing@scot.gov

Should you have any queries please do not hesitate to contact me.

Yours faithfully

Jessica Drew
Marine Licensing Casework Officer
Marine Scotland – Marine Planning & Policy Division
Scottish Government, Marine Laboratory, 375 Victoria Road, Aberdeen, AB11 9DB
Tel: +44 (0)1224 295414
S/B: +44 (0)1224 876544
Fax: +44 (0)1224 295524
e. jessica.drew@gov.scot
w: <http://www.gov.scot/marinescotland>

This e-mail (and any files or other attachments transmitted with it) is intended solely for the attention of the addressee(s). Unauthorised use, disclosure, storage, copying or distribution of any part of this e-mail is not permitted. If you are not the intended recipient please destroy the email, remove any copies from your system and inform the sender immediately by return.

Communications with the Scottish Government may be monitored or recorded in order to secure the effective operation of the system and for other lawful purposes. The views or opinions contained within this e-mail may not necessarily reflect those of the Scottish Government.

Tha am post-d seo (agus faidhle neo ceanglan còmhla ris) dhan neach neo luchd-ainmichte a-mhàin. Chan eil e ceadaichte a chleachdadh ann an dòigh sam bith, a' toirt a-steach còraichean, foillseachadh neo sgaoileadh, gun chead. Ma 's e is gun d'fhuair sibh seo le gun fhiosd', bu choir cur às dhan phost-d agus lethbhreac sam bith air an t-siostam agaibh, leig fios chun neach a sgaoil am post-d gun dàil.

Dh'fhaodadh gum bi teachdaireachd sam bith bho Riaghaltas na h-Alba air a chlàradh neo air a sgrùdadh airson dearbhadh gu bheil an siostam ag obair gu h-èifeachdach neo airson adhbhar laghail eile. Dh'fhaodadh nach eil beachdan anns a' phost-d seo co-ionann ri beachdan Riaghaltas na h-Alba.

The original of this email was scanned for viruses by the Government Secure Intranet virus scanning service supplied by Vodafone in partnership with Symantec. (CCTM Certificate Number 2009/09/0052.) This email has been certified virus free.

Communications via the GSi may be automatically logged, monitored and/or recorded for legal purposes.

This email has been scanned by the BT Assure MessageScan service
The service is delivered in partnership with Symantec.cloud

For more information please visit <http://www.globalservices.bt.com>

=====



Subject to the need to keep up to date file records, please consider your environmental responsibility before printing this email



Subject to the need to keep up to date file records, please consider your environmental responsibility before printing this email



Subject to the need to keep up to date file records, please consider your environmental responsibility before printing this email

This email and any files transmitted with it are private and

intended solely for the use of the addressee.

If you are not the intended recipient, the email and associated

files have been transmitted to you in error: any copying, distribution

or other use of the information contained in them is strictly prohibited.

Nothing in this email may be interpreted as a contractual or other legal commitment on the part of the Maritime and Coastguard Agency unless confirmed by a communication signed by or on behalf of the Chief Executive.

The MCA's computer systems may be monitored and communications carried on them recorded, to secure the effective operation of the system and for other lawful purposes.

If you are of the opinion that you have received this email in error, please contact postmaster@mcga.gov.uk

This email was scanned by the Government Secure Intranet anti-virus service supplied by Vodafone in partnership with Symantec. (CCTM Certificate Number 2009/09/0052.) In case of problems, please call your organisations IT Helpdesk. Communications via the GSi may be automatically logged, monitored and/or recorded for legal purposes.

This email has been received from an external party and has been swept for the presence of computer viruses.

A large white three-bladed wind turbine stands on a yellow and black steel jacket foundation in the middle of the sea. The sky is a clear, deep blue. In the foreground, a large splash of white water is visible, likely from a boat's wake. In the background, other smaller offshore structures are visible on the horizon.

Beatrice Offshore Wind Farm Consent Plan

Navigational Safety Plan

September 2015

The logo features a stylized sunburst or fan-like graphic composed of several curved lines in shades of blue and green, positioned above the company name.
Beatrice
Offshore Windfarm Ltd

[Page intentionally left blank]

Project Title/ Location	Beatrice Offshore Wind Farm
Project Reference Number	LF0000005
Date:	September 2015

Beatrice Offshore Wind Farm


Navigational Safety Plan

Pursuant to 36 Consent Condition 18 (Partial) and Marine Licence
(Offshore Transmission Works) Condition 3.2.2.9 (Partial)

For approval of the Scottish Ministers

This document contains proprietary information belonging to Beatrice Offshore Windfarm Ltd and/or affiliated companies and shall be used only for the purpose for which it was supplied. It shall not be copied, reproduced, disclosed or otherwise used, nor shall such information be furnished in whole or in part to third parties, except in accordance with the terms of any agreement under which it was supplied or with the prior consent of Beatrice Offshore Windfarm Ltd and shall be returned upon request.

© Copyright of Beatrice Offshore Windfarm Ltd 2015.

Rev	Prepared By	Sign Off	Checked By	Sign Off	Approved By	Sign Off	Date of Issue
01	GoBe Consultants Ltd & Anatec	Steve Bellew	BOWL	Johnathan Wilson	Steven Wilson, Senior PM, BOWL		30/09/15

Consent Plan Overview

Purpose of the Plan

This Navigational Safety Plan (NSP) has been prepared to address the specific requirements of the relevant conditions attached to Section 36 Consent and Marine Licences issued to Beatrice Offshore Windfarm Limited (BOWL).

The overall aim of the NSP is to set out the navigational safety measures to be applied during the construction and operation of the Beatrice Wind Farm and Offshore Transmission Works (OfTW).

Scope of the Plan

The NSP covers, in line with the requirements of Section 36 and Marine Licence conditions, and in line industry standards and good practice, the following:

- Navigational safety measures during construction: Temporary lighting and marking; buoyage; safety zones; management of the construction area; recommended routes and entry/exit gates; and, vessel safety requirements.
- Navigational safety measures during operation: Marine coordination; safety zones; management of operations and maintenance activities; recommended routes and entry/exit gates; and, vessel safety requirements.
- Anchoring areas.
- Notifications to other stakeholder and sea users.
- Emergency response.

Structure of the Plan

The NSP is structured as follows:

Sections 1 to 4 set out the scope and objectives of the NSP, provide an overview of the Project, set out broad statements of compliance and detail the process for making updates and amendments to this document.

Section 5 describes the navigational safety measures to be applied during construction.

Section 6 describes the navigational safety measures to be applied during operation.

Sections 7 to 9 set out information on anchoring, notifications to other sea users, and emergency response, which are applicable to all phases of the Development.

Section 10 confirms that the measures set out in the NSP comply with the requirements of Marine and Coastguard Agency published guidance.

Section 11 confirms that the measures set out in the NSP are compliant with those described and assessed in the original Application.

Appendices list relevant legislation, demonstrate compliance with the original Application and MCA guidance, and provide a list of stakeholders to which navigational notifications will be issued.

Plan Audience

This NSP is intended to be referred by personnel involved in the design, construction and operation of the Beatrice Project, including BOWL personnel, a future Offshore Transmission Operator, Key Contractors and Subcontractors.

Plan Locations

Copies of this NSP are to be held in the following locations:

- BOWL Head Office;
- At the premises of any agent, Key Contractor or Subcontractor acting on behalf of BOWL;
- All site offices dealing with marine operations;
- The BOWL Marine Coordination Centre at Wick; and
- On all vessels.

Table of Contents

List of Abbreviations and Definitions	8
1 Introduction	13
1.1 Background	13
1.2 Objectives of this Document	13
1.3 Linkages with other Consent Plans	19
1.4 Structure of this NSP	19
2 BOWL Statements of Compliance	21
2.1 Introduction	21
2.2 Statements of Compliance	21
2.3 Legislative Requirements	22
3 Updates and Amendments to this NSP	23
4 Project Overview	25
4.1 Introduction	25
4.2 Development Overview	25
4.3 Key Milestone Dates	28
4.4 BOWL and Key Contractor Roles and Responsibilities	29
5 Navigational Safety Measures during Construction	31
5.1 Introduction	31
5.2 Temporary Lighting and Marking	31
5.3 Buoyage	32
5.4 Construction Exclusion (Safety) Zones	34
5.5 Management of the Construction Area (including Safety Zones)	35
5.6 Recommended Routes and Entry/Exit Gates	35
5.7 Construction Vessels	36
5.8 Cable Laying and other RAM operations	36
6 Navigational Safety Measures during Operation and Maintenance	38
6.1 Introduction	38
6.2 Marine Coordination	38
6.3 Operational Exclusion (Safety) Zones	38
6.4 Management of Operations and Maintenance Activities	39
6.5 Recommended Routes and Entry/Exit Gates	39

6.6	Operation and Maintenance Vessels.....	39
6.7	Restricted in the Ability to Manoeuvre (RAM) operations.....	40
6.8	Subsea Cable Inspections.....	40
7	Anchoring Areas.....	41
7.1	Available Anchorages.....	41
7.2	Anchorage Areas to be Avoided	44
8	Notices to Mariners and Radio Navigation Warnings.....	46
8.1	Introduction	46
8.2	Local Notices to Mariners (LNtM)	46
8.3	Admiralty Notices to Mariners (UK Hydrographic Office)	47
8.4	Kingfisher Bulletins and KIS-ORCA.....	48
8.5	Radio Navigational Warnings	49
8.6	Other Notifications.....	50
9	Emergency Response	52
9.1	Emergency Response and Cooperation Plan	52
9.2	Marine Incident Reporting	52
10	Compliance with Marine Guidance Note 371.....	54
11	Compliance with the Application, ES and SEIS	55
11.1	Introduction	55
11.2	Delivery of Mitigation Proposed in the ES/SEIS.....	55
12	References	56
	Appendix A: Legislation, Policy and Guidance	58
	Appendix B: ES and SEIS Commitments	59
	Appendix C: Local Notices to Mariners Distribution List	63
	Appendix D: MGN 371 Compliance Audit	65

List of Abbreviations and Definitions

Term	Definition / Description
2007 Regulations	The Electricity (Offshore Generating Stations) (Safety Zones) (Applications Procedures and Control of Access) Regulations 2007.
AC	Alternating Current.
AIS	Automatic Identification System.
BOWL	Beatrice Offshore Windfarm Limited (Company Number SC350248) and having its registered office at Inveralmond House, 200 Dunkeld Road, Perth, PH1 3AQ.
CAA	Civil Aviation Authority.
CaP	The Cable Plan as required for approval under Condition 19 of the S36 consent and Condition 3.2.2.10 of the OfTW Marine Licence.
CCTV	Closed-circuit Television.
CFMS	Commercial Fisheries Mitigation Strategy.
CMS	Construction Method Statement as required for approval under Condition 11 of the S36 Consent and Condition 3.2.2.4 of the OfTW Marine Licence.
COLREGS	Convention on the International Regulations for Preventing Collisions at Sea.
Commencement of the Wind Farm/OfTW	The date on which Construction begins on the site of the Wind Farm or the OfTW (as appropriate) in accordance with the S36 Consent or OfTW Marine Licence (as appropriate).
Company	BOWL.
Consent Conditions	The terms that are imposed on BOWL under the S36 Consent or Marine Licence Consent that must be fulfilled throughout the period that the Consents are valid.
Construction	As defined at section 64(1) of the Electricity Act 1989, read with section 104 of the Energy Act 2004.
DECC	Department of Energy and Climate Change.
Decommissioning Programme	A programme for decommissioning the relevant object, to be submitted by the Company to the Secretary of State under section 105(2) of the Energy Act 2004 (as amended).
Development	The Beatrice Offshore Wind Farm in the outer Moray Firth, comprising the Wind Farm and the OfTW.
DIO	Defence Infrastructure Organisation.
EGC	Enhanced Group Call.
EMP	Environmental Management Plan as required for approval under

Term	Definition / Description
	Condition 15 of the S36 Consent and Condition 3.2.1.2 of the OfTW Marine Licence
ERCoP	Emergency Response Co-operation Plan.
ES	Environmental Statement submitted to the Scottish Ministers by the Company on 23 April 2012 as part of the Application.
FI	Flash, denotes a flashing light characteristic used in short range aids to navigation.
HAT	Highest Astronomical Tide.
HLV	Heavy-Lift Vessel.
HSE	Health and Safety Executive.
IALA	International Association of Marine Aids to Navigation and Lighthouse Authorities.
IALA Recommendation O-139	IALA Recommendation O-139 On The Marking of Man Made Offshore Structures.
IHO	International Hydrographic Organisation.
IMO	International Maritime Organisation.
Key Contractors	The Contractors appointed for the individual work streams of Marine Installation; Transmission; and WTGs.
KIS-ORCA	Kingfisher Information Service - Offshore Renewable & Cable Awareness.
LAT	Lowest Astronomical Tide.
Licencing Authority	Marine Scotland Licensing and Operation Team on behalf of The Scottish Ministers.
LMP	Lighting and Marking Plan as required for approval under Condition 20 of the S36 Consent and Condition 3.2.2.14 of the OfTW Marine Licence.
LNtoM	Local Notice to Mariners.
M+F	Both merchant ships and fishing vessels.
MAIB	Marine Accident Investigation Branch.
Marine Coordination	The management and surveillance of people, vessels and offshore structures to ensure the safe preparation and execution of offshore activities, in order to minimise the probability of an incident, and to provide effective response if an incident does occur.

Term	Definition / Description
Marine Licences	The written consents granted by the Scottish Ministers under Section 20(1) of the Marine (Scotland) Act 2010 and Part 4 of the Marine and Coastal Access Act 2009, dated 2 September 2014.
MARPOL	International Convention for the Prevention of Pollution from Ships.
MCA	Maritime and Coastguard Agency.
MF	Medium frequency.
MFOWDG	Moray Firth Offshore Wind Developers Group.
MGN	Marine Guidance Note.
MHWS	Mean high water springs.
MSN	Merchant shipping notices.
NAVAREA	Navigational Area; a geographic area in which various governments are responsible for navigation and weather warning.
NAVAREA1	NAVAREA1 relates to the United Kingdom.
Navtex	Navigational Telex - an international automated medium frequency direct-printing service for delivery of navigational and meteorological warnings and forecasts, as well as urgent marine safety information to ships.
NLB	Northern Lighthouse Board.
NM	Nautical miles.
NRA	Navigational Risk Assessment.
NSP	Navigational Safety Plan as required for approval under Condition 18 of the S36 Consent and Condition 3.2.2.9 of the OfTW Marine Licence.
NtM	Notice to Mariners.
O&M	Operations and Maintenance.
OfCOM	Office of Communications.
OFTO	Offshore Transmission Operator.
OfTW	The Offshore Transmission Works. The OfTW includes the transmission cable required to connect the Wind Farm to the Onshore Transmission Works. This covers the Offshore Transformer Modules (OTMs) and the cable route from the OTMs to the Mean High Water Springs (MHWS) at the landfall west of Portgordon on the Moray coast.
OMP	The Operation and Maintenance Programme as required for approval under S36 Consent condition 17 and OfTW Marine Licence condition 3.2.3.2.

Term	Definition / Description
OREI	Offshore Renewable Energy Installation.
OTM	Offshore Transformer Module means an alternating current (AC) OSP which is a standalone modular unit that utilises the same substructure and foundation design as a wind turbine generator.
RAM	Restricted in the Ability to Manoeuvre.
S36 Consent	Consent granted by the Scottish Ministers under Section 36 of The Electricity Act 1989 to construct and operate the Beatrice Offshore Wind farm electricity generating station, dated 19 th March 2014.
SafetyNET	SafetyNET is the international service for the broadcast and automatic reception of maritime safety information and search and rescue related information via EGC.
SEIS	Supplementary Environmental Information Statement submitted to the Scottish Ministers by the Company on 29 May 2013 as part of the Application.
SHL	Seaway Heavy Lifting Offshore Contractors BV.
Site	The area outlined in red in Figure 1 attached to the S36 Consent at Annex 1, and in black in the Marine Licences in Part 4, i.e. the boundary of the Wind Farm and OfTW.
SOLAS	International Convention for the Safety of Life at Sea.
STCW	The International Convention on Standards of Training, Certification and Watchkeeping for Seafarers.
STDL	Siemens Transmission and Distribution Ltd.
Subcontractors	Subcontractors to the Key Contractors.
SWPL	Siemens Wind Power Ltd.
UKHO	United Kingdom Hydrographic Office.
VHF	Very High Frequency.
VMP	Vessel Management Plan as required for approval under Condition 16 of the S36 consent and Condition 3.2.2.8 of the OfTW Marine Licence.
Wind Farm	The offshore array development as assessed in the ES including wind turbines, their foundations, inter-array cabling and meteorological masts.
Works	The Beatrice Offshore Windfarm Ltd. Wind Farm or Offshore Transmission Works (the OfTW), as described in the Marine Licences.
WTG	Wind Turbine Generator.

Term	Definition / Description
WWNWS	Worldwide Navigational Warning Service.
WZ	UK Coastal Navigational Warnings.
Y	Yellow, a term used to describe the characteristic colour of short range aids to navigation.

1 Introduction

1.1 Background

- 1.1.1 The Beatrice Offshore Wind Farm received consent under Section 36 of the Electricity Act 1989 from the Scottish Ministers on 19 March 2014 (the S36 Consent) and was granted two Marine Licences from the Scottish Ministers, for the Wind Farm and associated Offshore Transmission Works (OfTW), dated 2 September 2014 (the Marine Licences). The Wind Farm and the OfTW are jointly referred to as the 'Development'.

1.2 Objectives of this Document

- 1.2.1 The S36 Consent and Marine Licences contain a variety of conditions that must be discharged through approval by the Scottish Ministers/Licensing Authority prior to the commencement of any offshore construction works. One such requirement is the approval of a Navigational Safety Plan (NSP), which is to provide details of the measures that will be used to manage navigational safety throughout construction, operation and decommissioning (where applicable) of the Development.
- 1.2.2 The relevant conditions setting out the requirement for a NSP for approval, and which are to be discharged by this NSP, are presented in full in Table 1.1. Note that a full Emergency Response and Coordination Plan (ERCoP) is yet to be prepared and is not included as part of this NSP; BOWL are not therefore seeking the discharge of the relevant parts of the S36 and OfTW Marine Licence conditions relating to Emergency Response and Coordination arrangements but rather will submit details separately for approval at a later stage.
- 1.2.3 This document is intended to satisfy the remaining requirements of Condition 18 of the S36 Consent and Condition 3.2.2.9 of the Marine Licence (OfTW) conditions by providing a navigational safety plan that can be practically implemented during construction and operation (and in the case of emergency response also decommissioning¹) to ensure safe navigation.
- 1.2.4 This NSP sets out means to mitigate risks to vessels working on the Development, as well as third party vessels, during construction and operation and maintenance to ensure that navigational safety is not compromised.
- 1.2.5 Note that during the operational phase, the OfTW assets will be sold to an Offshore Transmission Operator (OFTO) and thereafter the responsibility for the implementation of and compliance with this NSP in so far as it applies to the OfTW assets will transfer to the OFTO. BOWL would prefer to maintain responsibility for managing the OfTW in this regard, providing that an agreement can be reached with the OFTO. However, in

¹ Broader navigational safety measures to be applied during decommissioning will be developed separately, in line with the Decommissioning Programme and in accordance with the relevant conditions of the S36 Consent and the OfTW Marine Licence.

the absence of such an agreement being reached, the OFTO will be responsible for the implementation of this NSP in relation to the operation of the OfTW.

Table 1.1 - NSP consent conditions to be discharged by this document

Ref.	Condition Text	Where Addressed
Section 36 Consent Condition 18	The Company must, no later than 6 months prior to the Commencement of the [Wind Farm], submit a Navigational Safety Plan ("NSP"), in writing, to the Scottish Ministers for their written approval.	This document sets out the NSP for approval by the Scottish Ministers.
	Such approval may only be granted following consultation by the Scottish Ministers with Maritime and Coastguard Agency (MCA), Northern Lighthouse Board (NLB) and any other navigational advisors or organisations as may be required at the discretion of the Scottish Ministers.	To be undertaken by the Scottish Ministers.
	The NSP must include, but not be limited to, the following issues: a) Navigational safety measures;	Section 5 (construction) and Section 6 (operation)
	b) Construction exclusion zones;	Section 5.4 (construction) (see also Section 6.3 (operation))
	c) Notice(s) to Mariners and Radio Navigation Warnings;	Section 8
	d) Anchoring areas;	Section 7
	e) Temporary construction lighting and marking;	Section 5.2
	f) Emergency response and co-ordination arrangements for the construction, operation and decommissioning phases of the Works; and	See Section 9 – Full ERCoP to be submitted separately for approval
	g) Buoyage.	Section 5.3 (construction buoyage) No buoyage is required during operation
	The Company must confirm within the NSP that they have taken into account and adequately addressed all of the recommendations of the MCA in the current Marine Guidance Note (MGN) 371, and its annexes that may be appropriate to the [Wind Farm], or any other relevant document which may supersede said guidance.	Section 10 and Appendix D
OfTW Marine Licence Condition	The [OfTW] must, at all times, be constructed and operated in accordance with the approved NSP (as updated and amended from time to time by the Company).	This document sets out the NSP for approval by the Licensing

Ref.	Condition Text	Where Addressed
3.2.2.9		Authority.
	Any updates or amendments made to the NSP by the Company must be submitted, in writing, by the Company to the Scottish Ministers for their written approval.	To be undertaken by the Licencing Authority.
	The NSP must include, but not be limited to, the following issues: a) Navigational safety measures;	Section 5 (construction) and Section 6 (operation)
	b) Construction exclusion zones;	Section 5.4 (construction) (see also Section 6.3 (operation))
	c) Notice(s) to Mariners and Radio Navigation Warnings;	Section 8
	d) Anchoring areas;	Section 7
	e) Temporary construction lighting and marking;	Section 5.2
	f) Emergency response and co-ordination arrangements for the construction, operation and decommissioning phases of the Works; and	See Section 9 – Full ERCoP to be submitted separately for approval
	g) Buoyage.	Section 5.3 (construction buoyage) No buoyage is required during operation
	The Licensee must confirm within the NSP that they have taken into account and adequately addressed all of the recommendations of the MCA in the current Marine Guidance Note 371, and its annexes, that may be appropriate to the [OfTW], or any other relevant document which may supersede said guidance.	Section 10 and Appendix D

1.2.6 In addition to the specific consent requirements for a NSP and the requirements thereof (as set out in Table 1.1), this NSP also includes information in respect of a number of other conditions within the Project consents which are linked to the matter of navigational safety; these are set out in Table 1.2.

1.2.7 Whilst this NSP does not seek to explicitly discharge these conditions, it provides the relevant information on the measures to be put in place to allow them to be discharged prior to commencement of the Development, and/or during the progress of construction and during operation.

Table 1.2 - Other consent conditions relevant to this NSP

Reference	Summary of condition	Where addressed
Wind Farm Marine Licence Condition 3.2.1.3	<p>Navigational and Aviation Safety and Charting</p> <p>The Licensee must, as soon as reasonably practicable prior to Commencement of the [Wind Farm], notify the UK Hydrographic Office ("UKHO") of the proposed works to facilitate the promulgation of maritime safety information and updating of nautical charts and publications through the national Notice to Mariners system.</p> <p>The Licensee must, as soon as reasonably practicable prior to the Commencement of the [Wind Farm], ensure that local mariners, fishermen's organisations and HM Coastguard, in this case Maritime Rescue Coordination Centre Shetland, are made fully aware of the Licensable Marine Activity through local Notice to Mariners or any other appropriate means.</p> <p>The Licensee must ensure that details of the [Wind Farm] are promulgated in the Kingfisher Fortnightly Bulletin, as soon as reasonably practicable prior to Commencement of the [Wind Farm] to inform the Sea Fish Industry of the vessel routes, the timings and the location of the [Wind Farm] and of the relevant operations.</p> <p>The Licensee must prior to Commencement of the [Wind Farm], complete an "Application for Statutory Sanction to Alter/Exhibit" form and submit this to the Northern Lighthouse Board ("NLB") for the necessary sanction to be granted.</p> <p>The Licensee must, prior to Commencement of the [Wind Farm], ensure that the location of all WTGs is made available for inclusion in the Clyde Cruising Club Sailing Directions and Anchorages.</p> <p>The Licensee must, prior to the Commencement of the [Wind Farm], and following confirmation of the approved Design Specification and Layout Plan ("DSLPL") by the Licensing Authority, provide the precise location and maximum heights of all WTGs, meteorological mast(s) and construction equipment over 150 m above lowest astronomical tide ("LAT"), and details of any lighting fitted to all WTGs, to the UKHO for aviation and nautical charting purposes.</p>	Section 8
Wind Farm Marine Licence Condition 3.2.2.3	<p>Navigational safety</p> <p>The Licensee must notify the UKHO of the progress of the [Wind Farm] to facilitate the promulgation of maritime safety information and updating of nautical charts and publications through the national Notice to Mariners system.</p> <p>The Licensee must notify, from Kirkwall to Peterhead, local mariners, fishermen's organisations and HM Coastguard, in this case Maritime Rescue Coordination Centre Shetland, of the progress of the [Wind Farm] through local Notice to Mariners or any other appropriate means.</p> <p>The Licensee must ensure that the progress of the [Wind Farm] is promulgated in the Kingfisher Fortnightly Bulletin to inform the Sea Fish Industry of the vessel routes, the timings and the location of the [Wind Farm] and of the relevant operations.</p> <p>.....</p> <p>The Licensee must ensure that no radio beacon or radar beacon operating in the Marine frequency bands are installed or used on the [Wind Farm] without the prior written approval of the Office of Communications ("OfCom").</p> <p>.....</p>	Section 8
Wind Farm Marine Licence	<p>Navigational safety</p> <p>The Licensee must notify the UKHO of the Completion of the [Wind Farm] to facilitate the promulgation of maritime safety information and</p>	Section 8

Reference	Summary of condition	Where addressed
Condition 3.2.3.2	<p>updating of nautical charts and publications through the national Notice to Mariners system.</p> <p>The Licensee must, within 1 month of the Completion of the [Wind Farm], provide the “as-built” positions and maximum heights of all WTGs, along with any sub-sea infrastructure, to the UKHO for aviation and nautical charting purposes.</p> <p>The Licensee must ensure that local mariners, fishermen's organisations and HM Coastguard, in this case Maritime Rescue Coordination Centre Shetland, are made fully aware of the Completion of the [Wind Farm].</p> <p>The Licensee must ensure that the Completion of the [Wind Farm] is promulgated in the Kingfisher Fortnightly Bulletin to inform the Sea Fish Industry.</p> <p>.....</p> <p>The Licensee must ensure that no radio beacon or radar beacon operating in the Marine frequency bands are installed or used on the [Wind Farm] without the prior written approval of OfCom.</p>	
OfTW Marine Licence Condition 3.2.2.14	<p>Navigational and Aviation Safety and Charting</p> <p>The Licensee must, as soon as reasonably practicable prior to Commencement of the [OfTW], notify the UK Hydrographic Office (“UKHO”) of the proposed works to facilitate the promulgation of maritime safety information and updating of nautical charts and publications through the national Notice to Mariners system.</p> <p>The Licensee must, as soon as reasonably practicable prior to the Commencement of the [OfTW], ensure that local mariners, fishermen's organisations and HM Coastguard, in this case Maritime Rescue Coordination Centre Shetland, are made fully aware of the Licensable Marine Activity through local Notice to Mariners or any other appropriate means. The Licensee must consult with the Buckie Harbour Master where appropriate, who may wish to issue local warnings to alert those navigating in the vicinity to the presence of the [OfTW] during construction.</p> <p>The Licensee must ensure that details of the [OfTW] are promulgated in the Kingfisher Fortnightly Bulletin, as soon as reasonably practicable prior to the Commencement of the [OfTW] to inform the Sea Fish Industry of the vessel routes, the timings and the location of the [OfTW] and of the relevant operations.</p> <p>The Licensee must prior to Commencement of the [OfTW], complete an “Application for Statutory Sanction to Alter/Exhibit” form and submit this to the NLB for the necessary sanction to be granted.</p> <p>The Licensee must, prior to Commencement of the [OfTW], ensure that the location of all OSPs and cables are made available for inclusion in the Clyde Cruising Club Sailing Directions and Anchorages.</p> <p>.....</p> <p>The Licensee must, prior to the Commencement of the [OfTW], and following confirmation of the approved DSLP by the Licensing Authority, provide the precise location and maximum heights of all OSPs, and construction equipment over 150 m above lowest astronomical tide (“LAT”), and details of any lighting fitted to all OSPs, to the UKHO for aviation and nautical charting purposes.</p>	Section 8
OfTW Marine Licence Condition 3.2.3.5	<p>Navigational safety</p> <p>The Licensee must notify the UKHO of the progress of the [OfTW] to facilitate the promulgation of maritime safety information and updating of nautical charts and publications through the national Notice to Mariners system.</p>	Section 8

Reference	Summary of condition	Where addressed
	<p>The Licensee must notify, from Kirkwall to Peterhead, local mariners, fishermen's organisations and HM Coastguard, in this case Marine Rescue Coordination Centre Shetland, of the progress of construction of the [OfTW] through local Notice to Mariners or any other appropriate means.</p> <p>The Licensee must ensure that the progress of construction of the [OfTW] is promulgated in the Kingfisher Fortnightly Bulletin to inform the Sea Fish Industry of the vessel routes, the timings and the location of the [OfTW] and of the relevant operations.</p> <p>.....</p> <p>The Licensee must ensure that no radio beacon or radar beacon operating in the marine frequency bands are installed or used on the [OfTW] without the prior written approval of the Office of Communications ("OfCom").</p> <p>.....</p>	
OfTW Marine Licence Condition 3.2.4.5	<p>Navigational safety</p> <p>The Licensee must notify the UKHO of the Completion of the [OfTW] to facilitate the promulgation of maritime safety information and updating of nautical charts and publications through the national Notice to Mariners system.</p> <p>The Licensee must, within 1 month of Completion of the [OfTW], provide the "as-built" positions and maximum heights of all OSPs, along with any sub-sea infrastructure, to the UKHO for aviation and nautical charting purposes.</p> <p>The Licensee must ensure that local mariners, fishermen's organisations and HM Coastguard, in this case Marine Rescue Coordination Centre Shetland, are made fully aware of the Completion of the [OfTW].</p> <p>The Licensee must ensure that the Completion of the [OfTW] is promulgated in the Kingfisher Fortnightly Bulletin to inform the Sea Fish Industry.</p> <p>.....</p> <p>The Licensee must ensure that no radio beacon or radar beacon operating in the marine frequency bands are installed or used on the [OfTW] without the prior written approval of the OfCom.</p>	Section 8
OfTW Marine Licence Condition 3.2.3.6	<p>Markings, lighting and signals of the [OfTW]</p> <p>The Licensee must ensure site boundaries are marked by Cardinal Mark buoys (number to be determined when the final layout of the [OfTW] is known). The Cardinal Mark buoys shall be a minimum of 3 metres in diameter at the waterline, have a focal plane of at least 3 metres above the waterline and be of suitable construction for the sea conditions commonly experienced in the Outer Moray Firth. The light range on these buoys shall be 5 nautical miles. All required buoyage shall remain in place until Completion of the [OfTW] or otherwise notified by the Licensing Authority.</p> <p>[...]</p>	Section 5.3

1.3 Linkages with other Consent Plans

- 1.3.1 This NSP document sets out the proposed navigational safety measures for the Wind Farm and OfTW. However, ultimately it will form part of a suite of approved documents that will provide the framework for the construction process – namely the other Consent Plans required under the S36 Consent and Marine Licences.
- 1.3.2 The consent conditions relating to this NSP do not explicitly identify linkages between this and other Consent Plans (see Table 1.1). However, other conditions in the consents require that several Consent Plans be consistent with the NSP; these plans are identified in Table 1.3.

Table 1.3 – NSP linkages with other Consent Plans

Other Consent Plan	Consistency with and linkage to NSP
The Vessel Management Plan (VMP) (required under S36 Consent Condition 16 and OfTW Marine Licence Condition 3.2.2.8)	The VMP will consider the management and coordination of vessels. The VMP must be, so far as is reasonably practicable, consistent with the NSP.
The Construction Method Statement (CMS) (required under S36 Consent Condition 11 and OfTW Marine Licence Condition 3.2.2.4)	The purpose of the CMS is to detail the methods that will be implemented during the construction of the Development. The CMS is, so far as is reasonably practicable, consistent with the NSP.
Operation and Maintenance Programme (OMP) (required under S36 Consent Condition 17 and OfTW Marine Licence Condition 3.2.3.2)	The OMP sets out the procedures and good working practices for the operational and maintenance (O&M) phase of the Development. The OMP must be, so far as is reasonably practicable, consistent with the NSP.

1.4 Structure of this NSP

- 1.4.1 In response to the specific requirements of the S36 Consent and the OfTW Marine Licence conditions, this NSP has been structured so as to be clear that each part of the specific requirements have been met and that the relevant information to allow the Scottish Ministers to approve the NSP has been provided. The document structure is set out in Table 1.4.

Table 1.4 – NSP document structure

Section		Summary of Content
1	Introduction	Background to consent requirements and overview of the NSP scope and structure; and Identifies those other Consent Plans relevant to the navigational safety and the linkage between those plans and the NSP.
2	BOWL Statements of Compliance	Sets out the BOWL statements of compliance in relation to the NSP consent conditions.
3	Updates and Amendments to this NSP	Sets out the procedures for any required updating to or amending of the approved NSP and subsequent further approval by the Scottish Ministers.
4	Project Overview	Provides an overview of the project details relevant to the NSP.
5	Navigational safety measures - construction	Sets out the navigational safety measures to be adopted during the construction phase including temporary lighting and marking, buoyage, safety zones (including management of safety zones), recommended routes and entry and exit points, construction vessels and cable laying and other restricted in ability to manoeuvre (RAM) operations.
6	Navigational safety measures - operation	Sets out the navigational safety measures to be adopted during the operational phase including marine co-ordination, safety zones, management of operations and maintenance activities, recommended routes and entry and exit points, operations and maintenance vessels and RAM operations and subsea cable inspections.
7	Anchoring areas	Describes the areas that may be used for anchoring (and areas to be avoided).
8	Notices to Mariners and radio navigation warnings	Sets out the notices to mariners, radio navigational safety warnings and other notifications to be promulgated at various stages of the development (prior to, during and following construction – and during operation).
9	Emergency Response	Sets out the framework for the emergency response procedure and marine incident reporting.
10	Compliance with MGN371	Provides an audit of the relevant parts of MGN371 to demonstrate that this NSP addresses all the relevant requirements.
11	Compliance with the Application, ES and SEIS	Sets out how the mitigation measures related to navigational safety identified in the ES and SEIS are to be delivered.

2 BOWL Statements of Compliance

2.1 Introduction

2.1.1 The following statements are intended to re-affirm the BOWL commitment to ensuring that the Development is constructed and operated in such a manner as to meet the relevant legislative requirements set out by the project consents but also broader legislative requirements; specifically it sets out:

- A number of statements of compliance relating to this NSP and the broader requirements of the project consents; and
- Legislative requirements.

2.1.2 Where an OFTO, rather than BOWL, is responsible for the long-term operation of the OfTW, they will be required to ensure compliance with this NSP in relation to the OfTW.

2.2 Statements of Compliance

2.2.1 BOWL in undertaking the construction and operation of the Development will require compliance with this NSP as approved by the Scottish Ministers (and as updated or amended from time to time following the procedure set out in Section 3 of this NSP).

2.2.2 Where significant updates or amendments to this NSP are required, BOWL will ensure the Scottish Ministers are informed as soon as reasonably practicable and where necessary the NSP will be updated and amended (see Section 3 below).

2.2.3 BOWL in undertaking the construction and operation of the Development will require compliance with other, relevant Consent Plans as approved by the Scottish Ministers and identified in Section 1.3 above.

2.2.4 BOWL in undertaking the construction and operation of the Development will require compliance with the limits defined by the original application and the project description defined in the Environmental Statement (ES) and Supplementary Environmental Information Statement (SEIS) and referred to in Annex 1 of the S36 Consent in so far as they apply to this NSP (unless otherwise approved in advance by the Scottish Ministers / the Licensing Authority) (see Section 11).

2.2.5 BOWL will require that all construction vessels meet the required, recognised standards and will comply with the international maritime rules (as adopted by the flag state) and regulations. Where necessary, BOWL will conduct appropriate independent vessel audits on all construction vessels to ensure they meet these standards and are fit for purpose for their prescribed roles.

2.2.6 Through conditions of contract, BOWL will require all construction vessels to comply with the procedures and requirements set out in this NSP and in any other relevant consent plans such as the CMS, the VMP, the LMP, the OMP and the EMP.

2.3 Legislative Requirements

- 2.3.1 BOWL will, in undertaking the construction and operation of the Development, require compliance with all relevant legislation and that all necessary licences and permissions are obtained by the Key Contractors and Subcontractors, through conditions of contract and by an appropriate auditing process.
- 2.3.2 BOWL will comply - and require that BOWL contractors comply - with the requirements of relevant environmental and maritime legislation as standard. A register of relevant legislation, policy and guidance with which this NSP complies is presented in Appendix A.

3 Updates and Amendments to this NSP

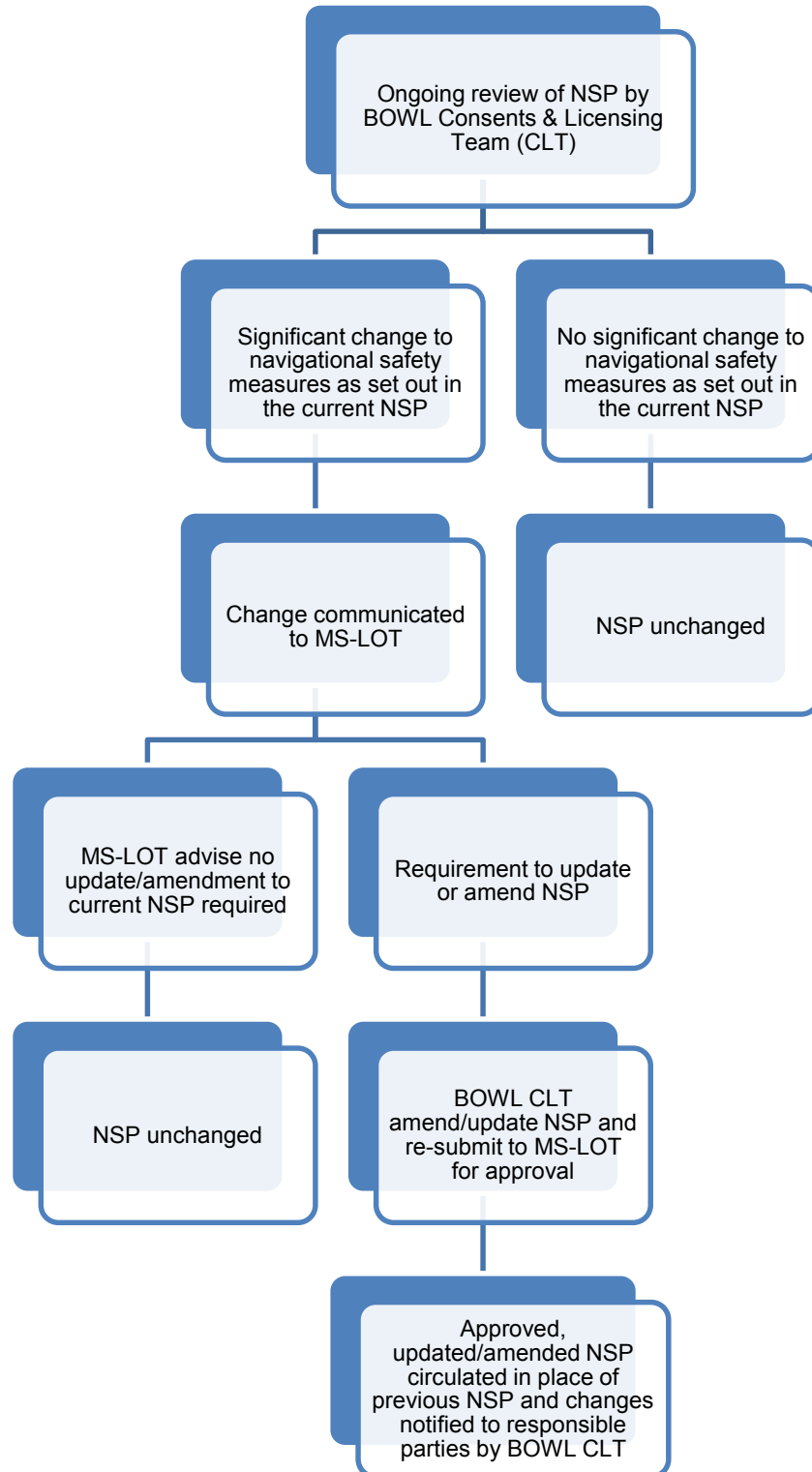
3.1.1 This NSP sets out the proposed navigational safety measures to be applied throughout the Development.

3.1.2 The S36 Consent condition recognises that updates or amendments to this NSP may be required, stating that:

The Development [Wind Farm] must, at all times, be constructed and operated in accordance with the approved NSP (as updated and amended from time to time by the Company [BOWL]). Any updates or amendments made to the NSP by the Company [BOWL] must be submitted, in writing, by the Company [BOWL] to the Scottish Ministers for their written approval.

3.1.3 Where it is necessary to update this NSP in light of any significant new information related to navigational safety requirements, BOWL propose to use the change management process set out in Figure 3.1 to identify such information, communicate necessary changes to the Scottish Ministers, re-draft the NSP, seek further approval of amendments or updates, and disseminate the updated version of the NSP.

Figure 3.1 – NSP change management procedure



4 Project Overview

4.1 Introduction

4.1.1 This section provides a brief overview of the Development relevant to the NSP and sets out in relation to BOWL and the Key Contractors, main roles and responsibilities.

4.2 Development Overview

4.2.1 The Development will consist of the following main components:

- A total generating capacity of up to 588MW;
- Up to 84 wind turbines of 7MW rated generating capacity;
- Jacket substructures each installed on four pile foundations driven into the seabed;
- Two AC substation platforms, referred to as offshore transformer modules (OTMs) to collect the generated electricity and transform the electricity from 33kV to 220kV for transmission to shore;
- A network of circa 170 to 190km of inter-array, buried or (if burying is not possible) mechanically protected, subsea cables to connect strings of turbines together and to connect the turbines to the OTMs;
- 2 buried or (if burying is not possible) protected, subsea export cables, totalling circa 130km in length, to transmit the electricity from the OTMs to the land fall at Portgordon and connecting to the onshore buried export cables for transmission to the onshore substation and connection to the National Grid network; and
- Minor ancillary works such as the potential deployment of met buoys and permanent navigational marks.

4.2.2 Figure 4.1 below shows the location of the Development in the Moray Firth, and identifies potential construction and operation ports. BOWL has identified Wick Harbour as the location of the Marine Co-ordination Centre and as the Operations and Maintenance (O&M) port; Nigg, Ardersier or Invergordon are most likely to be selected as the construction laydown port.

4.2.3 Figure 4.2 below sets out the final layout of the Wind Farm array, including the locations of the wind turbines and OTMs. Note that Figure 4.2 includes two spare locations. These spare locations would only be utilised in the event of difficulties being encountered during the foundation installation operations at one of the wind turbine or OTM locations that could not be otherwise overcome by micro-siting.

4.2.4 The minimum air gap between HAT and the rotor blade tips will be 28.5 metres (exceeding the minimum requirement of 22m above MHWS set out by the MCA in MGN 371).

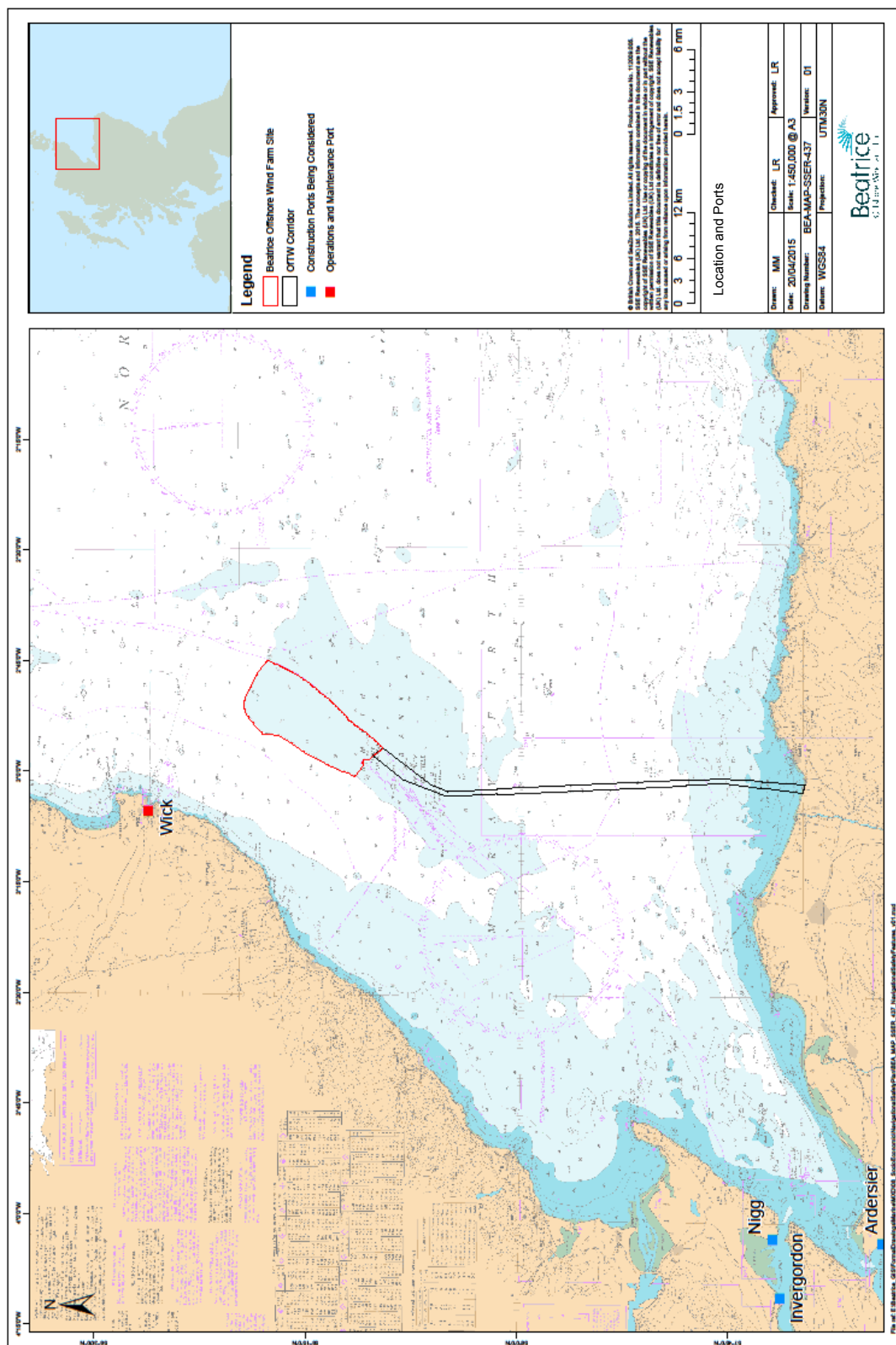
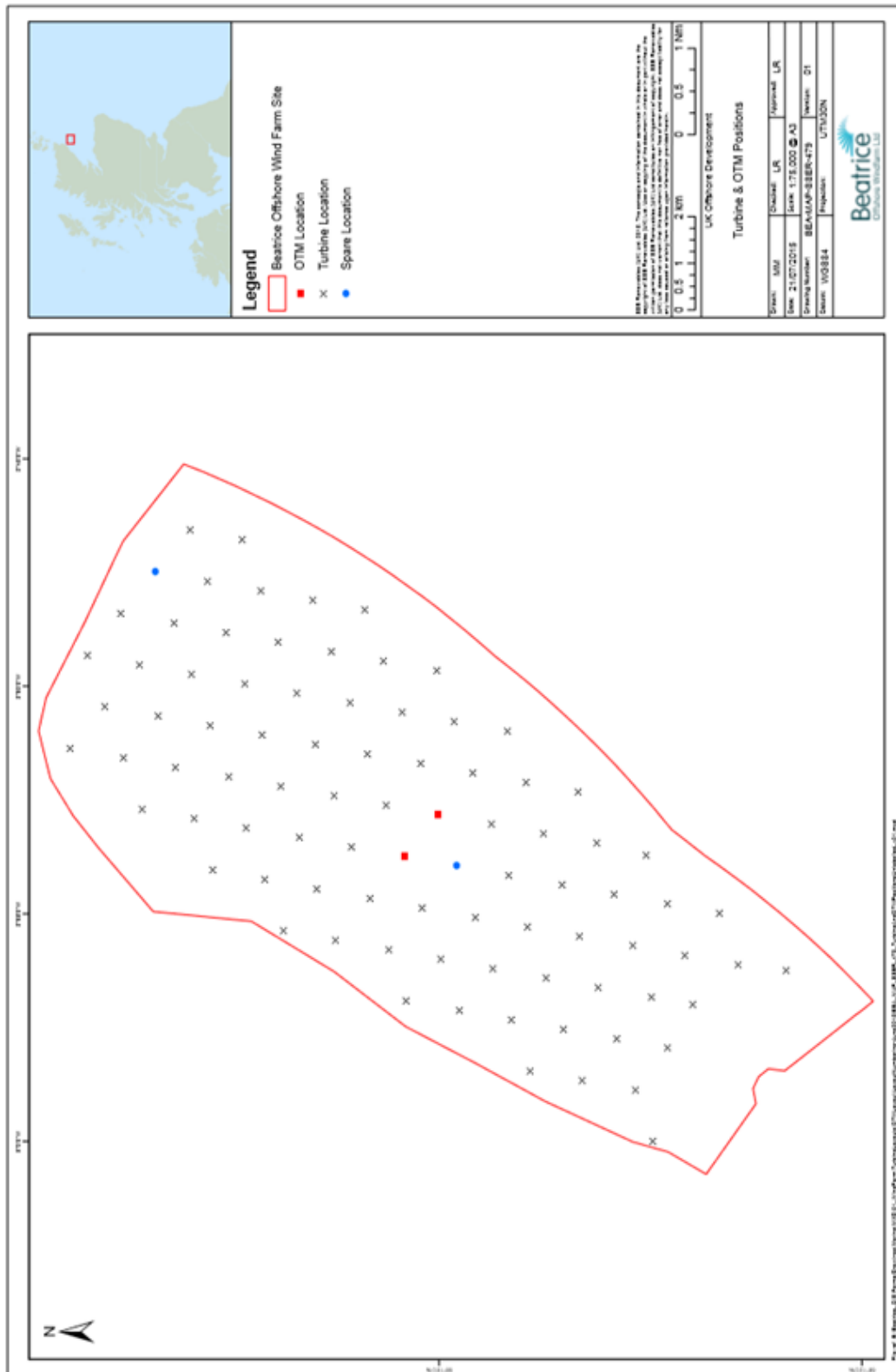


Figure 4.1 – Wind Farm location and OFTW cable route and Main Ports



4.3 Key Milestone Dates

4.3.1 The key milestone dates for the construction of the Development are presented in Table 4.1 below.

Table 4.1 - Summary of key milestone dates

Milestone	Anticipated Programme
Wind Farm	
Commencement of Wind Farm	April 2017
Mobilisation of Plant, Delivery of Materials to Onshore Laydown Areas (where required)	To match installation timings as set out below Onshore laydown of wind turbine components over the period from Q1 2018 and throughout the turbine installation period.
Timing and Sequencing of Construction Work	<p>Pile Foundations:</p> <ul style="list-style-type: none"> • April - November 2017 • April - September 2018 • (Installation December 2017 – March 2018 possible but unlikely) <p>Jackets:</p> <ul style="list-style-type: none"> • May - September 2017 • April – September 2018 <p>Wind turbines:</p> <ul style="list-style-type: none"> • June - September 2018 • April – August 2019 <p>Inter-array Cables:</p> <ul style="list-style-type: none"> • July - September 2017 • April - October 2018 • April – June 2019
Final Commissioning of Wind Farm	October 2019
OfTW	
Commencement of OfTW	April 2017
Mobilisation of Plant and Delivery of Materials	To match installation timings as set out below
Timing and Sequencing of Construction Work	<p>Pile Foundations:</p> <ul style="list-style-type: none"> • April 2017 <p>Jackets:</p> <ul style="list-style-type: none"> • September 2017 <p>OTM Topsides:</p> <ul style="list-style-type: none"> • April 2018 <p>Export Cables:</p> <ul style="list-style-type: none"> • July – October 2017 • March – June 2018
Final Commissioning of OfTW	October 2019

4.3.2 It is currently anticipated that the offshore construction works will be carried on:

- Primarily during the Spring – Autumn period (i.e. between April and October/November); and
- Around the clock (i.e. 24 hour working, 7 days a week unless noted otherwise).

4.4 BOWL and Key Contractor Roles and Responsibilities

4.4.1 All Masters of vessels, agents, Key Contractors and Subcontractors engaged in the construction or operation of the development will be required to comply with the approved NSP insofar as it is relevant to their engagement. BOWL will provide a copy of this NSP, and any subsequently amended versions of this NSP, to the Masters of any vessels, agents, contractors or sub-contractors engaged in the Development.

4.4.2 In summary, during the construction phase the Key Contractors will be:

- Seaway Heavy Lifting Offshore Contractors BV (SHL);
- Siemens Wind Power Ltd (SWPL); and
- Siemens Transmission and Distribution Ltd (STDL).

4.4.3 In summary, the main roles and responsibilities of the Key contractors will be as follows:

- SHL:
 - Wind turbine and OTM jacket foundation and substructure installation using SHL vessel(s) (with Subcontractors used for additional barges, anchor handling tugs and towing tugs as required);
 - OTM topside lift using SHL heavy lift vessel (with Subcontractors used for additional barges, anchor handling tugs and towing tugs as required); and
 - Inter-array cable installation (using subcontracted cable laying, trenching and support vessels and subcontractors).
- SWPL:
 - Management of the construction laydown port facility where the wind turbine components will be pre-assembled ready for installation;
 - Wind turbine installation using a jack-up vessel; and
 - Wind turbine cable connections and commissioning works (with subcontracted crew transfer vessels used to transport personnel to carry out completion and commissioning activities);
- STDL:
 - Export cable laying and trenching (using Subcontractors (Nexans) and cable laying, trenching and support vessels); and
 - OTM topside supply and commissioning (with subcontracted crew transfer vessels used to transport personnel to carry out OTM completion and commissioning activities).

4.4.4 During the operations and maintenance phase, BOWL will contract appropriate companies to undertake maintenance and repairs as required. The types of activities that will be undertaken will include the following:

- Maintenance and servicing of wind turbines and OTMs;
- Maintenance of lighting and marking;
- Monitoring of scour around wind farm structures and cables; and
- Where necessary, monitoring and repair of inter-array and/or export cables.

4.4.5 As stated in paragraph 1.2.5, during the operational phase, the OfTW assets will be sold to an Offshore Transmission Operator (OFTO) and thereafter the responsibility for the implementation of and compliance with this NSP in so far as it applies to the OfTW assets will transfer to the OFTO. BOWL would prefer to maintain responsibility for managing the OfTW in this regard, providing that an agreement can be reached with the OFTO. However, in the absence of such an agreement being reached, the OFTO will be responsible for the implementation of this NSP in relation to the operation of the OfTW.

5 Navigational Safety Measures during Construction

5.1 Introduction

5.1.1 The following section sets out the navigational safety measures that BOWL will implement during the construction of the Wind Farm and OfTW, including details on matters specifically required by the consent conditions, namely:

- Temporary construction lighting and marking;
- Buoyage; and
- Construction exclusion (safety) zones.

5.1.2 In addition it sets out a number of additional requirements relating to:

- Recommended routes and entry and exit gates;
- Matters relating to construction vessels; and
- Cable laying and other Restricted Ability to Manoeuvre (RAM) activities.

5.1.3 Details of anchoring areas, the promulgation of Notices to Mariners and Radio Navigational Warnings and emergency response and coordination arrangements are set out separately in Sections 7, 8 and 9 respectively of this NSP.

5.1.4 Matters related to navigational safety during operation are addressed separately under Section 6 below.

5.2 Temporary Lighting and Marking

5.2.1 Marine and aviation marking, including lights, visual marks and construction buoyage will be provided in accordance with NLB, Civil Aviation Authority (CAA), MCA, and the Defence Infrastructure Organisation (DIO) requirements. The detailed requirements are set out for approval in the LMP and following the requirements of the NLB (in the case of marine navigational lighting and marking) and the CAA and MOD (DIO) (in the case of aviation marking and lighting).

5.2.2 In summary, NLB have confirmed that there are no lighting or marking requirements for each installed jacket foundation or wind turbine prior to commissioning, but subject to the caveat that if structures are left over the winter period (October to March), BOWL's Key Contractors (on behalf of BOWL) will be required to mark the structures with temporary yellow lights, with the following characteristics:

- Fixed structures marked with a FI Y 2.5s light (visible through 360°) with a 2 nautical mile range.

5.2.3 In consultation with the NLB, it was agreed that the lighting and marking of temporary structures will be agreed as construction progresses, and in advance of the first winter period of the construction programme.

5.2.4 Construction buoyage is described separately under section 5.3 below.

5.2.5 Prior to commencing construction of the Development, BOWL will complete an “Application for Statutory Sanction to Alter/Exhibit” form and submit this to the NLB for the necessary sanction to be granted.

5.3 Buoyage

5.3.1 The construction area will be the area bounded by the construction buoyage, as defined following consultation with NLB.

5.3.2 In summary, the construction buoyage will be comprised of:

- Cardinal buoys on the principle compass points; and
- Four special mark buoys.

5.3.3 Figure 5.1 shows the proposed construction area and construction buoyage for the Wind Farm.

5.3.4 The Cardinal Mark buoys will be a minimum of 3 metres in diameter at the waterline, have a focal plane of at least 3 metres above the waterline and be of suitable construction for the sea conditions experienced in the Outer Moray Firth. The light range on these buoys shall be 5 nautical miles.

5.3.5 To date during consultation with NLB, no requirement for buoyage to demarcate the export cable works during cable installation works has been indicated (although this is a specific requirement set out in the OfTW marine licence consent condition (see Table 1.1). As a result, buoyage to demarcate the export cable route is not currently proposed in this NSP (or in the LMP submitted for approval).

5.3.6 In addition, It is envisaged that at particular times, for example when vessels are vulnerable due to partially completed construction works, the construction area will be monitored by guard vessels to further protect and provide information to any third party vessels.

5.3.7 The construction areas demarcated by the buoyage around the Wind Farm will be areas within which vessels are advised not to transit or enter. Information relating to the buoyage will be promulgated in Admiralty Notices to Mariners, Local Notice to Mariners and radio navigational warnings as set out in Section 8 of this NSP

5.3.8 Following the final commissioning of the wind farm the buoyage used during the construction period will be removed (NLB have indicated that no buoyage will be required during the operational phase of the Development).

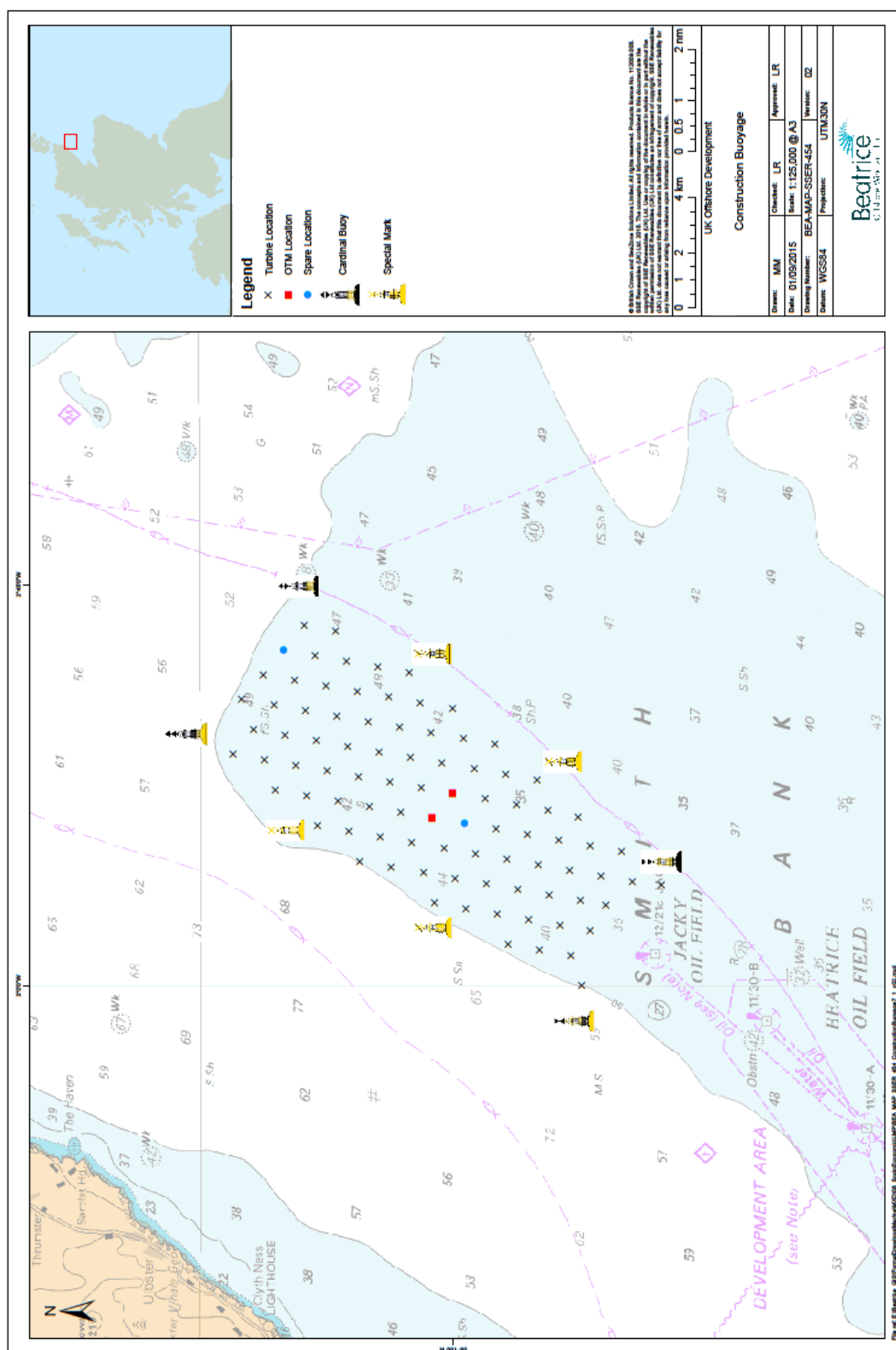



Figure 5.1 – Wind Farm Construction Buoyage

5.4 Construction Extension (Safety) Zones

- 5.4.1 Section 95 and Schedule 16 of the Energy Act 2004 set out the basic requirements for applying for a safety zone to be placed around or adjacent to an offshore renewable energy installation (OREI). The Electricity (Offshore Generating Stations) (Safety Zones) (Applications Procedures and Control of Access) Regulations 2007 clarify the requirements for applications. It applies to territorial waters in or adjacent to Scotland and within the Renewable Energy Zone.
- 5.4.2 An application will be made to the Department for Environment and Climate Change (DECC) for Safety Zones whilst also serving notice of the application to Marine Scotland, in line with the 2007 Regulations and will be accompanied by a layout plan and construction programmes, and will also include proposals for notifying relevant stakeholders.
- 5.4.3 During construction, an application will be made for safety zones of 500 metres around the construction works (this will act to prohibit other marine users from entering the designated safety zone area, apart from during emergency incidents and with the exception of those vessels engaged in construction activities).
- 5.4.4 The construction safety zones will be applied on a “rolling” basis i.e. their application will follow the progress of the construction activities as it proceeds across the wind farm area. Construction safety zones would be applied around the major installation works, including:
- Installation of foundation piles;
 - Installation of jacket substructures;
 - Erection of the wind turbines on the foundation;
 - Installation of the OTM foundation piles and jacket substructure;
 - Installation of the OTM topsides;
 - Inter-array cable connections on the wind turbine jacket substructures;
 - Inter-array cable connections to the OTM; and
 - Export cable connections to the OTM.
- 5.4.5 In addition, it is envisaged that smaller safety zones of 50m radius may also be applied for and would be employed around partially completed structures but where active construction work is not underway (for example around pile stick-ups, installed jackets, or installed but not yet commissioned wind turbines etc.).
- 5.4.6 The status and location of safety zones within the wind farm will be promulgated on a regular basis throughout the construction period via the method set out in Section 8 of this NSP.

- 5.4.7 In line with the guidance set out in MGN 371, in gaining consent for a Safety Zone, BOWL agrees to monitor the safety zone for infringements. Any infringements will be notified to the  A along with supporting evidence of the infringement (for example in the form of Radar or AIS data or footage from Closed Circuit Television (CCTV) monitoring, or other supporting evidence provided by site vessels.

5.5 Management of the Construction Area (including Safety Zones)

- 5.5.1 BOWL (or the nominated Key Contractor) will establish a Marine Coordination Centre from where construction activities will be managed, including all communications internally and to third parties (see Section 8). Ultimately this marine coordination centre will be based at Wick Harbour.
- 5.5.2 Movements of vessels around the Development (those engaged in the construction of the development and vessels passing nearby) will be monitored from the Marine Coordination Centre.
- 5.5.3 The Marine Coordinator and their support team, based at the Marine Coordination Centre, will obtain and provide localised weather information for vessels working on the Development to plan the construction activities. The Centre will also maintain a copy of the ERCoP (see Section 9) and will be the main point of contact in the event of emergency incidents.
- 5.5.4 Permission for construction vessels to enter the construction area and safety zones will be managed by the Marine Coordination Centre, for example using a Permit to Work system.
- 5.5.5 The Marine Coordination Centre will establish protocols for approaching and leaving the worksite as well as management systems to record the work being undertaken and the vessels and personnel undertaking that work.
- 5.5.6 The Marine Coordination Centre will also ensure the safety of the site using appropriate methods such as guard vessels where appropriate. Systems will be in place to prevent unauthorised vessels entering the site or posing a risk to themselves or vessels engaged in the construction works.

5.6 Recommended Routes and Entry/Exit Gates

- 5.6.1 BOWL will identify suitable vessel transport routes and entry/exit points to the construction areas. These defined routes and entry/exit points will be used by construction vessels² to ensure they do not increase the risk of encounters with other

² It is noted that recommended routes are not compulsory and the Master of any vessel may alter their vessels course should navigational safety dictate in line with COLREGs.

commercial, recreational or fishing traffic within the Moray Firth, and to ensure local users are aware of areas where they are likely to encounter vessels associated with construction of the Development, as well as being designed to minimise impacts on sensitive bird and marine mammal species.

- 5.6.2** During the construction phase liaison will also be ongoing with local port operators to appropriately manage vessel movements in the wider Moray Firth area.

5.7 Construction Vessels

- 5.7.1 BOWL will require that all construction and operational vessels meet the required, recognised standards and will comply with the international maritime rules (as adopted by the relevant flag state) and regulations for their class and area of operation.
- 5.7.2 BOWL will conduct independent vessel audits on construction vessels as necessary to check that they meet these standards and are appropriate for the purpose of their prescribed roles.
- 5.7.3 Vessel crews will be required to meet the requirements for the size, type and area of operation in line with the Standards for Training, Certification and Watch keeping (STCW) set out by the International Maritime Organisation, and any site specific requirements implemented by BOWL above minimum standards.
- 5.7.4 Key Contractors on behalf of BOWL will require that all construction and operational vessels will comply with the procedures and requirements set out in this NSP.
- 5.7.5 All construction vessels will be equipped with AIS receivers and transmitters.

5.8 Cable Laying and other RAM operations

- 5.8.1 RAM vessels will be utilised during cable installation works. RAM vessels are those restricted in their ability to manoeuvre as a result of the nature of their work and therefore unable to keep out of the way of another vessel. They will comply with the International Convention for the Prevention of Collisions at Sea (COLREGS), which is the international convention regulating vessel movements. All vessels regardless of nationality are required to comply with this Convention to ensure that they do not interact with vessels that are restricted in their navigational ability.
- 5.8.2 RAM vessels will transmit safety warning on Very High Frequency (VHF) to inform other vessels of their actions, using the 'Sécurité' message if the messages contain important safety information relevant to navigation. Communications between the RAM vessels and the Marine Coordination Centre will be ongoing throughout their operation.
- 5.8.3 RAM vessels will comply with vessel type regulation information transmitted through the Automatic Identification System (AIS), and show current navigational status at all

times to ensure other vessels equipped with AIS can identify that they are a vessel engaged in a restricted operation.

- 5.8.4 Cable laying activities will be publicised through the notification procedures (see Section 8.0), and if necessary, guard vessels will be employed during the cable laying period.

6 Navigational Safety Measures during Operation and Maintenance

6.1 Introduction

6.1.1 The following section sets out the navigational safety measures that BOWL and the OFTO (i.e. BOWL in relation to the Wind Farm and the OFTO or BOWL in relation to the OfTW) will implement during the operation of the Wind Farm and OfTW, including details on:

- Marine Coordination;
- Operational exclusion (safety) zones;
- Management of operations and maintenance activity;
- Recommended routes and entry/exit gates;
- Operations and maintenance vessels
- RAM operations; and
- Subsea cable inspections.

6.1.2 Details of anchoring areas, the promulgation of Notices to Mariners and Radio Navigational Warnings and emergency response and coordination arrangements are set out separately in Sections 7, 8 and 9 respectively of this NSP.

6.2 Marine Coordination

6.2.1 Operations and maintenance (O&M) activities will also be managed from the Marine Coordination Centre at Wick Harbour. The Marine Coordination Centre will be the focus of marine activities and coordinate all communications internally and to third parties. It will also maintain a copy of the ERCoP (Section 9) and will be the main point of contact in the event of emergency incidents.


6.2.2 The Marine Coordination Centre, part of the necessary O&M facilities, will monitor the vessel movements around the Development using AIS, radar and Closed-circuit Television (CCTV). Using these facilities other marine users in and around the Development will be monitored from the control centre, including potential Safety Zone infringements when safety zones are in place. This will be in addition to visual observations by personnel on Wind Farm vessels (including guard vessels) working within and around the Development.

6.3 Operational Exclusion (Safety) Zones

6.3.1 BOWL does not currently propose to apply for routine safety zones during the operational phase of the Development. However, this decision will be kept under review and where it is considered necessary for purposes of safe navigation BOWL may consider applying for 50 metre "Operational" Safety Zone around structures.

Where necessary an application would be submitted to the DECC with a safety case demonstrating the requirement.

6.3.2 BOWL will apply for safety zones of 500 metres to be applied during major maintenance work such as replacement of a turbine blade, or during “unplanned” works, such as to repair major faults. It is envisaged that only works that would require the use of a heavy lift vessel (HLV) or jack-up vessel would require the imposition of these safety zones, due to such vessels being restricted ability to manoeuvre and due to the nature of the these maintenance operations.

6.3.3 As per MGN 371, in applying and gaining consent for a safety zone BOWL agrees to monitor the safety zone for unlawful infringements. Any infringements should be notified to the  A along with supporting evidence of the infringement.

6.4 Management of Operations and Maintenance Activities

6.4.1 The Marine Coordination Centre will establish protocols for approaching and leaving the Development site, and manage systems to record the work being undertaken, and vessels and personnel undertaking the work.

6.4.2 The Marine Coordination Centre, manned 24 hours per day, will ensure the safety of the site using appropriate monitoring methods including CCTV, AIS, radar and, where necessary, guard vessels.

6.5 Recommended Routes and Entry/Exit Gates

6.5.1 As for construction, BOWL will identify suitable vessel transport routes and entry/exit points to the operational wind farm. These defined routes and entry/exit points will be used by operations and maintenance vessels³ to ensure they do not increase the risk of encounters with other commercial, recreational or fishing traffic within the Moray Firth, and to ensure local users are aware of areas where they are likely to encounter vessels associated with the operation and maintenance of the Development, as well as being designed to minimise impacts on sensitive bird and marine mammal species.

6.5.2 During the operational phase, liaison will also be ongoing with local port operators to appropriately manage vessel movements in the wider Moray Firth area.

6.6 Operation and Maintenance Vessels

6.6.1 All vessels used on site during the operational phase will be required to meet the required, recognised standards and will comply with the international maritime rules

³ It is noted that recommended routes are not compulsory and the Master of any vessel may alter their vessels course should navigational safety dictate in line with COLREGs.

(as adopted by the relevant flag state) and regulations for their class and area of operation.

6.6.2 BOWL will conduct independent vessel audits on operational vessels as necessary to check that they meet these standards and are appropriate for the purpose of their prescribed roles.

6.6.3 Vessel crews will be required to meet the requirements for the size, type and area of operation in line with the STCW set out by the International Maritime Organisation, and any site specific requirements implemented by BOWL above minimum standards.

6.6.4 All operational and maintenance vessels will be installed with AIS receivers and transmitters.

6.7 Restricted in the Ability to Manoeuvre (RAM) operations

6.7.1 Vessels restricted in their ability to manoeuvre (RAM) may be used during maintenance operations and will comply with COLREGS. They will transmit safety warnings on VHF to inform other vessels of their actions, using the 'Sécurité' message if the messages contain important safety information relevant to navigation.

6.7.2 Cable maintenance will be publicised through the notification procedures (see Section 8), and where necessary, guard vessels will be employed during the cable maintenance period.

6.8 Subsea Cable Inspections

6.8.1 The subsea export and inter-array cables will be subject to periodic inspection to ensure they remain buried and protected.

6.8.2 Concerns noted by other users of the sea, or via the inspection process in relation to cable burial will be promulgated via the methods set out in Section 8. The MCA will be informed of any significant changes in burial depth or cable protection.

7 Anchoring Areas

7.1 Available Anchorages

7.1.1 Figure 7.1 illustrates the locations of known small and large anchorage areas within the Moray Firth relative to the Wind Farm and the OfTW and Table 7.1 summarises the relevant details of the anchorages (noting that a vessel can anchor in any water it deems safe and where anchoring is not prohibited).

7.1.2 Anchoring is at the decision of the vessel Master but can be in conjunction with information provided by the Marine Coordination Centre or port authorities where relevant. Standard marine practice however requires that a vessel anchors having considered various factors such as:

- Water depth;
- Seabed type and charted hazards including cables/pipelines;
- Weather and tidal information including current and predicted weather;
- Avoidance of prohibited anchorage areas;
- Consideration for other anchored vessels;
- Avoidance of known areas of other marine activity such as fishing or recreational boating; and
- Avoidance of main commercial routes, pilot boarding areas or other navigational features such as spoil grounds or subsea cables.

7.1.3 Construction vessels requiring anchorage within the Development area will request permission to do so from the Marine Coordination Centre.

Table 7.1 - Summary of Anchorage Areas within Moray Firth

(Note this table contains all charted anchorages and not all anchorages will be suitable for all vessel types).

Anchorage	Description
1. Freswick Bay	Anchorage is afforded to coasters in a depth of 6m, sand, in the northern part of the bay; care is necessary to avoid a dangerous wreck near the centre of the bay.
2. Sinclair's Bay	In fine settled weather, Sinclair's Bay affords fair anchorage but it is not safe in unsettled conditions. With winds between southwest and southeast the best berth is in the southern part of the bay in a depth of 16m with Ackergill Tower bearing 230° and Noss Head bearing 105° as indicated on the chart.
3. Littleferry	Anchorage can be found in about 3m southeast of the village of Littleferry, noting that submarine cables are laid across Littleferry between the disused peers.
4. Dornoch Firth	There is anchorage in depths of 6-7m, mud and sand, fair holding, eight cables east-south-east of Dornoch Point as indicated on the chart; the berth is sheltered from north easterly swell by Gizzen Briggs.

Anchorage	Description
5. Wilkhaven	0.5NM east of Wilkhaven in depths of 13-14m with the extremity of Tarbat Ness bearing 321°.
6. Rockfield	0.5NM east of Rockfield in a depth of about 15m with the extremity of the land bearing 017°.
7. Shandwick Bay	Off Shandwick Bay with the breakwater at Balintore bearing 314° distant 0.45 cables in a depth of 14m, sand, fair holding only; there is nearly always a swell in this anchorage and is untenable in easterly weather. Great care must be taken to avoid a submarine oil pipeline which, as indicated on the chart, is landed in Shandwick Bay from the Beatrice Oil Field.
8. Cromarty Firth Inner Anchorage	There is anchorage anywhere in the fairway between Cromarty and Invergordan in depths not exceeding 30m. In the vicinity of Invergordan the holding ground is only fair and deep water space is restricted; large vessels anchored in this vicinity may experience difficulty when getting under way during the out-going tidal stream. Numbered anchor berths for ships are indicated on the chart.
9. Cromarty Harbour Anchorage	Anchorage can be found for coasters about 0.2NM west of the harbour in a depth of about 6m as indicated on the chart.
10. Cromarty Firth Outer Anchorage	There is an anchorage for tankers in a depth of about 21m, sand and mud, 3.25NM east-south-east of South Sutor as indicated on the chart. Additionally, four anchorage berths, numbered 14 – 17, for other vessels lie between 0.7NM and 1.75NM south east of South Sutor.
11. Burghead Outer Anchorage	A recommended anchorage lies 1NM west of the harbour entrance in a depth of about 11m, sand. Disused cables in this vicinity are no longer considered a hazard but a submarine outfall pipe, over which depths may be about 2.5m less than charted on account of rock protection, extends 0.55NM north west from the extremity of Burghead.
12. Lossiemouth Outer Anchorage	<p>If anchoring temporarily to await suitable tides for entry mariners are advised to keep Civesea Skerries Light open north of Stotfield Head and to remain in depths of not less than 10m.</p> <p>The best berth for larger vessels is in a depth of about 13m with the harbour entrance bearing 242° and Halliman Skerries Beacon (2NM west-north-west) bearing 277° as indicated on the chart. The holding ground in this berth is good, but 0.2NM farther east the bottom is rocky and the holding bad.</p> <p>Whenever anchoring off Lossiemouth care is necessary to avoid a submarine outfall, the extremity of which is marked by a buoy (special) 0.5NM north east of the harbour entrance.</p>
13. Spey Bay	Anchorage is available anywhere in Spey Bay west of the meridian 3° West, but mariners are advised to remain in depths of not less than 10m. In the event of strong north east winds the anchorage should be vacated at once as in these conditions the sea quickly starts to break at a considerable distance offshore.

Anchorage	Description
14. Cullen Bay	<p>Anchorage can be found in the outer part of Cullen Bay, as indicated on the chart, with the railway viaduct bearing 193° and Scar Nose bearing about 280° in depths of 9-11m.</p> <p>Port Long (close west of Logie Head), a rocky cove with a sandy bottom, is used as a temporary refuge by local craft unable to make Cullen Harbour during strong winds from the northern quadrant.</p>
15. Sandend Bay	<p>Sandend Bay is entered between Redhythe Point (57° 41'N, 2°43'W) and Garron Point (1NM west) and has a sandy beach at its head. The village of Sandend, where there is a small boat harbour, lies in the south west corner of the bay.</p>
16. Whitehills	<p>Vessels awaiting sufficient tide to permit entering Whitehills Harbour can anchor, as indicated on the chart, 0.5NM offshore north west of the harbour entrance, with Durn Hill bearing 203°, in a depth of about 12m.</p>
17. Macduff Outer Anchorage	<p>Recommended anchorage area located approximately 1.0 – 2.5NM north of the entrance to Macduff Harbour. Holding ground consists of fine sand, shingle and pebbles in depths of 34 -38m. Care should be taken to avoid the subsea cable to the west of the anchorage area.</p>
18. Gamrie Bay and Gardenstown	<p>Gamrie Bay extends between More Head (57° 41'N, 2°22'W) and Crovie Head (1.25NM northeast) and anchorage can be obtained within the bay as indicated on the chart.</p> <p>Gardenstown Harbour dries but has depths of 2.7m and 3.5m at high water neap tides and high water spring tides respectively, and quays with a total length of about 510m. During north east winds there is considerable swell in the harbour but Craig Dagerty and the ridge to the south afford good shelter from north westerly winds. At the village of Crovie, 0.7NM north east of Gardenstown, there is a pier and a landing slip which covers at high water spring tides.</p>
19. Pennan Bay and Cullykhan Bay	<p>Pennan Bay and Cullykhan Bay are two small rocky bays which lie adjacent to each other in an indentation of the coast between Pennan Head (57° 41' N, 2° 15'W) and Lion's Head (0.9NM west-north-west) on which there are some buildings and the ruins of Fiddes Fort. The village of Pennan lies at the foot of steep cliffs at the head of Pennan Bay, the easterly of the two bays.</p> <p>Tamhead and Howdman, two drying rocks lies, respectively, in the approach to Pennan Bay and Cullykhan Bay. Local knowledge is required to enter the bays.</p> <p>Two small piers at the eastern end of Pennan Village afford shelter to fishing boats which are hauled out of the water in bad weather.</p>
20. Aberdour Bay	<p>Aberdour Bay is entered between Quarry Head (57° 41'N, 2° 10'W) and Strahangles Point (1.5NM west) and affords anchorage as indicated on the chart.</p>

7.2 Anchorage Areas to be Avoided

- 7.2.1 The consultation undertaken with the MCA and NLB to date has not indicated the need for any specific areas to be avoided by construction vessels when anchoring; operational experience may however identify such areas and where this is the case such areas will be communicated to all relevant vessels engaged in construction or operational activity.

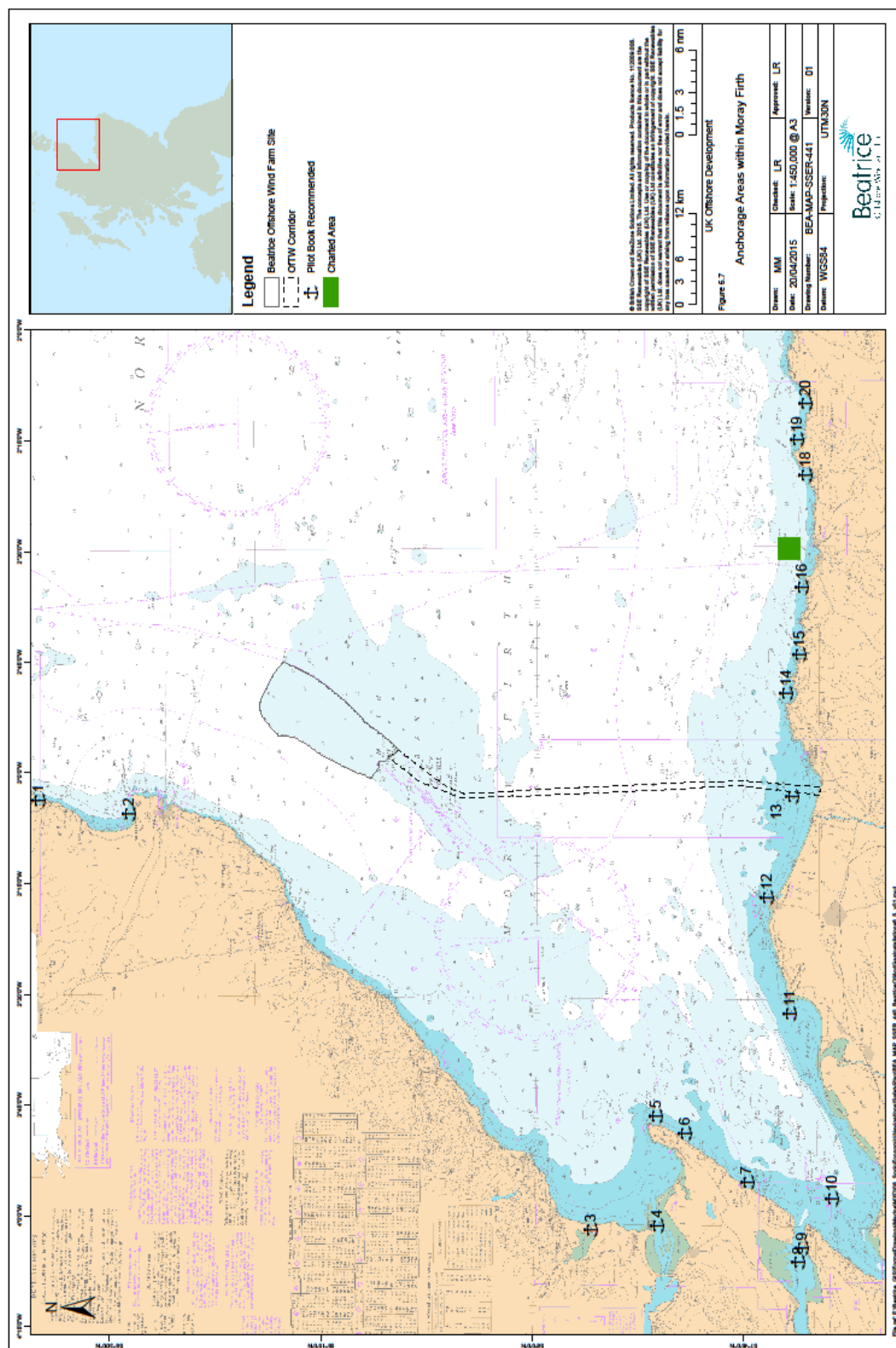


Figure 7.1 – Anchorage Areas in the Moray Firth

8 Notices to Mariners and Radio Navigation Warnings

8.1 Introduction

- 8.1.1 This section provides information on the proposed approach to distributing and issuing Notice(s) to Mariners (NtMs) and other appropriate notifications to the relevant stakeholders and other marine users to advise them of matters affecting navigational safety.
- 8.1.2 During construction, Key Contractors (via the Marine Coordination Centre) will be responsible for issuing NtMs.
- 8.1.3 During operation, NtMs will be issued by the Marine Coordination Centre.

8.2 Local Notices to Mariners (LNtM)

- 8.2.1 Local Notices to Mariners (LNtMs) will be issued as required during the construction and operation of the Development to advise stakeholders and marine users of local matters affecting navigational safety. Specific actions that will be completed during the various phases of the Development are set out in the Sections below. LNtMs will be issued to the organisations listed in Appendix C.
- 8.2.2 The LNtMs issued will be concise, detailing navigational safety information and may include, but not be limited to, the information set out in Table 8.1.

Table 8.1 - Local Notice to Mariners content

Title	Clearly state the document is an LNtM and a short relevant title about the scope of the topic. This should include the date of issue and the notice number.
Supplementary information	Details of the organisation and project issuing the LNtM and any relevant LNtMs issued prior to the current one.
Detail	<ul style="list-style-type: none"> • Date/Time of start/finish and location of work (coordinates). • Vessels on Site including call signs. • Activity being undertaken. • Specific risks to navigation and presence of safety zones if applicable.
Contact details	Sufficient details to allow mariners to contact the organisation issuing the LNtM.

LNtM Issued Prior to the Commencement of the Development

- 8.2.3 Prior to construction commencing local mariners, fishermen's organisations and HM Coastguard, in this case, Maritime Rescue Coordination Centre Shetland, will be made

fully aware of the Licensable Marine Activity through LNtMs (or any other appropriate means).

LNtM Issued During Construction

- 8.2.4 The Marine Coordination Centre will notify, from Kirkwall to Peterhead, local mariners, fishermen's organisations and HM Coastguard, in this case Maritime Rescue Coordination Centre Shetland, of the progress of the construction of the Development. This will include any faults to aids to navigation which may impact navigational safety.

LNtM Issued Upon Commissioning and During Operation

- 8.2.5 Local mariners, fishermen's organisations and HM Coastguard, in this case Maritime Rescue Coordination Centre Shetland, will be made fully aware of the completion of the construction works and the commissioning of the Development.
- 8.2.6 Relevant stakeholders will be informed via LNtMs of any planned and unplanned maintenance activities that are outside the day to day maintenance activities carried out at the Development.

8.3 Admiralty Notices to Mariners (UK Hydrographic Office)

- 8.3.1 Admiralty Notices to Mariners (NtMs) are issued by the UK Hydrographic Office (UKHO) and can include chart corrections. The UKHO issues these on a weekly basis to provide physical corrections to charts and associated publications. It is the responsibility of mariners to look up the Weekly Editions of Admiralty NtMs which can be found on the UKHO website and to make any necessary corrections to the charts on board their vessel.

NtMs Issued Prior to the Commencement of the Development

- 8.3.2 BOWL will, as soon as reasonably practicable prior to construction commencing on the Development, require that the UKHO is notified of the proposed Development to facilitate the promulgation of maritime safety information and updating of nautical charts and publications through the national Notice to Mariners system.
- 8.3.3 As soon as reasonably practicable prior to Commencement of the Development, but following approval of the DSLP, BOWL will provide the precise location and maximum heights of all wind turbine generators, OTMs and construction equipment over 150 m above LAT and details of any lighting fitted to all wind turbines and OTMs, to the UKHO for aviation and nautical charting purposes.

NtMs Issued During Construction

- 8.3.4 The UKHO will be notified of the progress of the construction of the Development to facilitate the promulgation of maritime safety information and updating of nautical charts and publications through the national Notice to Mariners system.

Temporary and Preliminary (T&P) NtMs

- 8.3.5 Temporary and Preliminary (T&P) NtMs is a type of NtM which indicates works about to commence and temporary changes to charts. The Marine Coordination Centre will issue these NtMs when required during the construction period.
- 8.3.6 A T&P NtM will be issued by the Marine Coordination Centre to UKHO at the start of the construction works and the UKHO is likely to issue the NtM as a chart correction covering the Development site as “Construction in Progress” until it is fully completed.

NtMs Issued Upon Commissioning

- 8.3.7 BOWL will notify the UKHO of the Completion of the construction of the Development to facilitate the promulgation of maritime safety information and updating of nautical charts and publications through the national Notice to Mariners system.
- 8.3.8 BOWL will, within 1 month of the Completion of the construction of the Development, provide the “as-built” positions and maximum heights of all wind turbines, OTMs and any sub-sea infrastructure, to the UKHO for aviation and nautical charting purposes.

UK Hydrographic Charts

- 8.3.9 Wind turbines will be charted by the UK Hydrographic Office using the magenta turbine tower or wind farm area chart symbol (found in publication ‘NP 5011 - Symbols and Abbreviations used in Admiralty Charts’) on appropriate scale charts.
- 8.3.10 Submarine inter-array cables associated with Wind Farm will also be charted on the appropriate scale charts.

8.4 Kingfisher Bulletins and KIS-ORCA

- 8.4.1 The Kingfisher Information Service - Offshore Renewable & Cable Awareness project (KIS-ORCA) is a joint initiative between Subsea Cables UK and Renewable UK and is being managed by the Kingfisher Information Service of Seafish. Information is available in fortnightly bulletins (Kingfisher - offshore wind and marine renewables) or downloadable from the KIS-ORCA website.

KIS-ORCA Notifications Prior to the Commencement of the Development

- 8.4.2 BOWL will require that details of the Development are promulgated in the Kingfisher Fortnightly Bulletin, as soon as reasonably practicable prior to Commencement of the Construction of the Development to inform the Sea Fish Industry of the vessel routes, the timings and the location of the Development, and of the relevant operations.

KIS-ORCA Notifications During Construction

- 8.4.3 BOWL, through the Marine Coordination Centre, will require that the progress of the construction of the Development is promulgated in the Kingfisher Fortnightly Bulletin to inform the Sea Fish Industry of the vessel routes, the timings and the location of construction activities.
- 8.4.4 Notifications to the Kingfisher Fortnightly Bulletin may include, for example, an overview of the project, roles and responsibilities, method statements relevant to the scope of work for which the notification is issued, offshore activity schedule, navigational safety procedures, advisory exclusion zones or safety zones, and any relevant drawings or other project information.

KIS-ORCA Notifications Upon Commissioning and During Operation

- 8.4.5 BOWL will require that the Completion of the Development is promulgated in the Kingfisher Fortnightly Bulletin to inform the Sea Fish Industry.
- 8.4.6 BOWL will require that notices are issued to the Kingfisher Fortnightly Bulletin detailing any planned and unplanned maintenance activities that are outside the day to day maintenance activities carried out at the development.

8.5 Radio Navigational Warnings

- 8.5.1 Radio Navigational Warnings may be issued if an activity or incident poses a danger to other marine users. Examples of when Radio Navigational Warnings could be issued at the Development are:
- Failures to light signals, fog signals, buoys or other aids to navigation;
 - Establishing major new aids to navigation;
 - Cable laying activities; or
 - Other underwater operations that may constitute potential dangers in or near shipping lanes.
- 8.5.2 Once details of an activity on site have been issued through the standard NtM process, the UKHO will then decide if the warning should be transmitted as a Radio Navigational Warning. The UKHO will then issue the navigational warning.

8.5.3 In the context of Radio Navigational Warnings the UKHO act as the NAVAREA I (NE Atlantic) Co-ordinator for the International Maritime Organization (IMO) and International Hydrographic Organization (IHO) Worldwide Navigational Warning Service (WWNWS) and also as the United Kingdom National Co-ordinator for issuing coastal navigational warnings. The MCA however is the overarching body responsible for broadcasting the warnings and is the organisation responsible for charging to broadcast them.

8.5.4 For information, the broadcasts are under the control of the UKHO but tend to be made as follows:

- For vessels in NAVAREA1 broadcasts are made through EGC Safety NET within 30 minutes of receiving the navigational warning or at the next scheduled broadcast (every 12 hours);
- Broadcast by Navtex twice a day as UK Coastal Navigational Warnings (WZs) by appropriate Navtex stations at each transmission time (every 4 hours) or upon receipt of the information if it is of a vital nature; and
- Broadcast by VHF or Medium Frequency (MF) radio from selected MCA stations at the next scheduled broadcast and every 12 hours thereafter.

8.5.5 BOWL will require that no radio beacon or radar beacon operating in the Marine frequency bands are installed or used during the construction and operation and maintenance of the Development without the prior written approval of the Office of Communications ("OfCom").

8.6 Other Notifications

8.6.1 This section sets out other notifications that will be issued in line with the Wind Farm and OfTW Marine Licence conditions.

Clyde Cruising Club- Sailing Directions

8.6.2 The Clyde Cruising Club has published Sailing Directions for Scottish waters since its inception in 1909. They publish the North & Northeast Scotland and Orkney Islands sailing direction, which covers the Scottish coast from Cape Wrath to Peterhead, including Inverness Firth and the entrance to the Caledonian Canal.

8.6.3 BOWL will, prior to Commencement of construction of the Development, require that the location of all wind turbines and OTMs is made available for inclusion in the Clyde Cruising Club Sailing Directions and Anchorages.

8.6.4 During construction and O&M, the Marine Coordination Centre will issue construction and major maintenance notifications to the Clyde Cruising Club.

8.6.5 The as-built locations will be available from the UKHO within 1 month of completion of the construction works, for inclusion into an amendment to the Sailing Direction.

Buckie Harbour Master

- 8.6.6 BOWL and their Key Contractors will consult with the Buckie Harbour Master where appropriate, who may wish to issue local warnings to alert those navigating in the vicinity to the presence of the OfTW installation works during the construction period.

9 Emergency Response

9.1 Emergency Response and Cooperation Plan

9.1.1 BOWL proposes to prepare and issue to MS-LOT/the Licensing Authority in consultation with the MCA, a full ERCoP for the Development (following the MCA template) for approval, no later than 6 months prior to construction commencing.

9.1.2 The Plan will include, but not be limited to, the following information:

1. Roles and responsibilities of the company in an emergency;
2. Details of the installation to be built;
3. Coastguard operations centre;
4. SAR Facilities and their response capability;
5. Medical advice and assistance;
6. Firefighting, chemical hazards, trapped persons etc;
7. Survivors shore reception arrangements;
8. Suspension/ termination of SAR action;
9. Criminal action and accidents to persons;
10. Media relations;
11. Exercises;
12. Unexploded ordnance and wreck materials located on or near to OREIs;
13. Wreck or wreck materials; and
14. Counter pollution.

9.2 Marine Incident Reporting

9.2.1 In relation to environmental, SHE or pollution incidents, an incident reporting process is set out in the Environmental Management Plan (EMP), submitted for approval, which will be followed by all vessels and personnel. This sets out the reporting process to be followed and the roles and responsibilities in relation to incident reporting and management.

9.2.2 Matters relating to emergency response, including the reporting of any such incidents will be set out for approval in the ERCoP (see Section 9.2 above).

UK Marine Reporting Requirements

9.2.3 In addition, within UK waters, all vessels are required to report any incidents related to navigational safety by the quickest means possible to the Marine Accident and Investigation Branch (MAIB). The MAIB has a dedicated reporting line for this purposes +44 (0)23 8023 2527. This line is staffed 24 hours a day. This includes all accidents and serious injuries.

9.2.4 Information required will include:

- Details of the incident;
- Vessel details; and
- Details of personnel involved.

10 Compliance with Marine Guidance Note 371

10.1.1 The S36 Consent and OfTW Marine Licence conditions set out in Table 1.1 require BOWL to demonstrate that this NSP has adequately addressed all of the recommendations of the current Marine Guidance Note 371 (MGN371), and its annexes that may be appropriate to the Development (or any other relevant document which may supersede said guidance).

10.1.2 The latest version of MGN 371 (MCA, 2008) has therefore been reviewed and all appropriate recommendations (at this pre-construction stage of the development) have been identified. In each case, it has been indicated where each of these recommendations has been addressed within the NSP (or other relevant consent plan) for the Development. The results of this audit of the requirements of MGN371 is set out in Appendix D.

10.1.3 It should be noted that some recommendations within MGN 371 in relation to evacuation (winching) from turbines are not relevant to the NSP and therefore no cross reference is provided.

11 Compliance with the Application, ES and SEIS

11.1 Introduction

11.1.1 In addition to the conditions presented in Table 1.1, Condition 8 of the S36 Consent states:

The Development [Wind Farm] must be constructed and operated in accordance with the terms of the Application and related documents, including the accompanying ES, the SEIS and Annex 1 of this letter, except in so far as amended by the terms of this section 36 consent.

11.1.2 Section 11.2 set out information from the ES/SEIS with regard to the delivery of the stated navigation safety-related mitigation.

11.2 Delivery of Mitigation Proposed in the ES/SEIS

11.2.1 The ES and SEIS detailed a number of mitigation commitments specific to the design of the Development. Measures relevant to navigational safety are presented in full in Appendix B, which also identifies where each commitment has been addressed within the NSP or within other BOWL Consent Plans where appropriate.

12 References

Guidance

DECC (2007), Guidance Notes - Applying for Safety Zones Around Offshore Renewable Energy Installations;

Health and Safety Executive (HSE) (2015) Guidance on The Construction (Design and Management) Regulations 2015 L153.

HSE (2011), A Quick Guide to Health and Safety in Ports, INDG 446.

International Association of Marine Aids to Navigation and Lighthouses (IALA) (20014), Recommendations 0-139 (The Marking of Man-Made Offshore Structures, Edition 2).

Maritime and Coastguard Agency (MCA) (2008a), Marine Guidance Note (MGN) 371: Offshore renewable energy installations (OREIs): guidance on UK navigational practice, safety and emergency response issues. Available online:

<https://www.gov.uk/government/publications/mgn-371-offshore-renewable-energy-installations-oreis> [accessed 30/01/15].

MCA (2008b) MGN 372 M+F Offshore Renewable Energy Installations (OREIs) Guidance to Mariners Operating in the Vicinity of UK OREIs. Available online:

<https://www.gov.uk/government/publications/mgn-371-offshore-renewable-energy-installations-oreis>

MCA (2014), Offshore Renewable Energy Installations, Emergency Response Cooperation Plans (ERCoP) for Construction and Operations Phase, and Requirements for Emergency Response and SAR Helicopter Operations, as updated 4th November 2014. Available online: <https://www.gov.uk/government/publications/offshore-renewable-energy-installations-orei>

Relevant Legislation

Energy Act 2004, Chapter 2, Section 95-97, Available online:

<http://www.legislation.gov.uk/ukpga/2004/20/contents> (accessed 20/01/15).

Health and Safety at Work Act 1974

Health and Safety at Work etc. Act 1974 (Application outside Great Britain) Order 2013 implemented in the UK through Merchant Shipping Notices (MSN)

International Regulations for Preventing Collisions and Sea 1972 (COLREGS), as amended

MCA (2002), Search and Rescue Framework for the United Kingdom of Great Britain and Northern Ireland;

Merchant Shipping Act 1995.

MSN 1781: The Merchant Shipping (Distress Signals & Prevention of Collisions) Regulations 1996.

Safety of Life at Sea (SOLAS) Convention, as implemented in the UK through The Merchant Shipping (Safety of Navigation) Regulations 2002.

STCW – International Convention on Standards of Training, Certification and Watchkeeping for Seafarers, 1995, implemented through the Merchant Shipping (Training and Certification) Regulations 1997 (as amended).

The Construction (Design and Management) Regulations 2015 (the CDM Regulations).

The Electricity (Offshore Generating Stations) (Safety Zones) (Application Procedures and Control of Access) Regulations 2007, Available online:

<http://www.legislation.gov.uk/uksi/2007/1948/contents/made> (accessed 20/01/15).

The Pilotage Act 1987.

Appendix A: Legislation, Policy and Guidance

The following relevant legislation, policy and guidance regarding the safe navigation at sea is applicable to this NSP:

- United Nations Conventions on the Law of the Sea;
- International Regulations for Preventing Collisions and Sea 1972 (COLREGS);
- Safety of Life at Sea (SOLAS) Convention 1974, as implemented in the UK through The Merchant Shipping (Safety of Navigation) Regulations 2002;
- International Convention on Standards of Training, Certification and Watchkeeping for Seafarers (STCW), 1978, as amended, implemented through the Merchant Shipping (Training and Certification) Regulations 1997 (as amended);
- International Convention for the Prevention of Pollution from Ships (MARPOL) (1973/1978);
- Merchant Shipping Act (1995);
- The Construction (Design and Management) Regulations 2007 (the CDM Regulations);
- MCA (2008) MGN 371 M+F Offshore Renewable Energy Installations (OREIs) - Guidance on UK Navigational Practices. Safety and Emergency Response Issues (including subsequent updates in 2014);
- MCA (2008b) MGN 372 M+F Offshore Renewable Energy Installations (OREIs) Guidance to Mariners Operating in the Vicinity of UK OREIs;
- DECC (2007), Guidance Notes - Applying for Safety Zones Around Offshore Renewable Energy Installations;
- MCA (2008), Search and Rescue Framework for the United Kingdom of Great Britain and Northern Ireland; and
- International Association of Marine Aids to Navigation and Lighthouses (IALA) Recommendations 0-139 (The Marking of Man-Made Offshore Structures, Edition 2) (IALA, 2013).

BOWL, BOWL's contractors and sub-contractors, and all vessel operators are required to comply with UK and international legislation relevant to their vessels flag state. The Development has been designed to comply with legislation and relevant guidance in relation to offshore navigational safety, and this NSP has been developed to be compliant with the legislation and relevant guidance.

Appendix B: ES and SEIS Commitments

Document	Chapter No.	Chapter	Details of commitment	Reference to Section in NSP
ES	7	Project Description	During all marine operations a relevant safety zone will be applied for the construction, commissioning and operational phases of the project.	Section 5.4 (construction) and Section 6.3 (operation)
ES	7	Project Description	Temporary safety zones will be marked with a navigation buoy at each corner of the zone. The zone will be subject to a Notice to Mariners' as a temporary construction site and off limits to third parties. The zones will be advertised using the proper channels and liaison will take place prior to implementation with the relevant local sea users and bodies, including the port authorities	Section 5.4 (construction safety zones) and Section 6.3 (operational safety zones) Section 5.3 (construction buoyage) Section 8 (Notices to Mariners)
ES	7	Project Description	Where necessary along the Offshore Transmission Works cable route, guard boats or standby boats will be employed to guard specific points. A vessel will also be nominated to monitor the safety zones and guard against any infringements	Section 5.4 (construction safety zones) and Section 5.3 (buoyage)
ES	7	Project Description	A 500 m (the maximum permissible under international law - UNCLOS) safety zone will be in place around each turbine during construction, major maintenance, and decommissioning	Section 5.4 (construction) and Section 6.3 (operation)
ES	7	Project Description	A Control Centre, part of the necessary O&M facilities, will have an Automatic Identification System (AIS), Radar coverage, and CCTV coverage, which will identify vessels with AIS transmitters entering into the safety zone during construction and commissioning activities. This will be in addition to visual observations by personnel on Wind Farm vessels or guard vessels working within and around the Wind Farm Site and OfTW corridor. Any vessel identified or observed to stray in to the safety zone will be contacted by a designated member of the crew of the Wind Farm or guard vessel.	Section 5.5 (construction management) and Section 6.2 (operational management)
ES	7	Project Description	If an operational safety zone is required, it will be subject to a Notice to Mariners' as a temporary construction site and off limits to third parties. Furthermore during maintenance operations this would be extended to 500 m (the maximum permissible under international law) around the relevant structures.	Section 6.3 (operation)

Document	Chapter No.	Chapter	Details of commitment	Reference to Section in NSP
ES	7	Project Description	An AIS and CCTV from an onshore Control Centre will be in place to monitor vessel movements within the Wind Farm	Section 6.2
ES	16	Commercial Fisheries	The developer will apply for safety zones during the construction phase.	Section 5.4
ES	18	Shipping and Navigation	Safety Zones will be applied for in line with DECC guidance.	Section 5.4
ES	18	Shipping and Navigation	Appropriate liaison will be undertaken to ensure information on the Wind Farm and special activities is circulated in Notices to Mariners, Navigation Information Broadcasts and other appropriate media.	Section 8
ES	18	Shipping and Navigation	The Wind farm and associated submarine inter-array cables will be charted by the UK Hydrographic Office (UKHO) in Admiralty Charts	Section 8
ES	18	Shipping and Navigation	An Emergency Response Co-operation Plan (ERCoP) for the Wind Farm (as per the MCA template), will be in place pre-construction	Section 9 (ERCoP to be submitted separately for approval)
ES	30	Other Issues	During construction and operation of the Wind Farm there will be ongoing liaison with the operators of all infrastructure in the Moray Firth.	Section 5.5 (construction management) and Section 6.4 (operational management)
ES	30	Other Issues	During construction and operation BOWL will liaise with operators of Ports and Harbours in the Moray Firth to ensure BOWL are aware of any concerns and can act upon them	Section 5.6 (construction routes and entry/exit points) and Section 6.5 (operation routes and entry/exit points) Section 8 (notifications)
ES	30	Other Issues	During construction of the Wind Farm, safety zones will be in operation	Section 5.4
SEIS	3	EIA	Need to notify UK Hydrographic Office (UKHO) of turbine and met mast locations and heights pre-construction.	Section 8
SEIS	13	Shipping and Navigation	There will be continued dialogue within the MFOWDG throughout the development process to support the effective management of cumulative and in combinations effects to navigation safety.	Section 8 and see also the CFMS

Document	Chapter No.	Chapter	Details of commitment	Reference to Section in NSP
SEIS	13	Shipping and Navigation	Further assessment of the use of operational safety zones will be carried out once detailed design of the OfTW has been completed. It is acknowledged that these will require full justification on grounds of navigational safety. If safety zones are not justified, the NRA would be updated to assess any changes in risk as a result of their removal.	Section 6.3
SEIS	13	Shipping and Navigation	The detailed Emergency Response Plans, which will be produced during the final design stage and submitted for approval prior to construction commencing, will reflect the requirements at the time of writing.	Section 9 (ERCoP to be submitted separately for approval)
SEIS	13	Shipping and Navigation	500 m safety exclusion zone to be implemented during construction	Section 5.4
SEIS	15	Shipping and Navigation	Consideration of a requirement for 500 m safety zones around construction activities and a 50 m safety zone during the operational phase;	Section 5.4 (construction) and Section 6.3 (operation)
SEIS	15	Shipping and Navigation	An ERCoP for the Wind Farm will be put in place pre-construction.	Section 9 (ERCoP to be submitted separately for approval)
ES	28	Shipping and Navigation OfTW	A [Marine Coordination Centre] will monitor AIS and record the movements of ships around the export cable(s) as well as company vessels working at the cable route	Section 5.5 (construction management) and Section 6.2 & 6.4 (marine coordination and operational management)
ES	7	Project Description	A Control Centre, part of the necessary O&M facilities, will have an Automatic Identification System (AIS)	Section 5.5 (construction management) and Section 6.2 & 6.4 (marine coordination and operational management)
ES	7	Project Description	Radar coverage, and CCTV coverage, which will identify vessels with AIS facilities entering into the safety zone during construction and commissioning activities. This will be in addition to visual observations by personnel on Wind Farm vessels or guard vessels working within and around the Wind Farm Site and OfTW corridor. Any vessel identified or observed to stray in to the safety zone will be	Section 5.4 (construction safety zones) and Section 5.5 (management)

Document	Chapter No.	Chapter	Details of commitment	Reference to Section in NSP
			contacted by a designated member of the crew of the Wind Farm or guard vessel.	
ES	7	Project Description	A Control Centre will monitor AIS and non-AIS vessels by CCTV and record the movements of vessels around the Wind Farm as well as company vessels working at the site	Section 5.5 (construction management) and Section 6.4 (operational management)
ES	28	Shipping and Navigation OfTW	BOWL will use the draft template created by the MCA to formulate an emergency response plan and site Safety Management Systems, in consultation with the MCA	Section 9 (ERCoP to be submitted separately for approval)
ES	28	Shipping and Navigation OfTW	The Safety Management System will include an incident/accident reporting system which will ensure that incidents and near misses to be recorded and reviewed to monitor the effectiveness of the risk control measures in place at the site	Section 9 (ERCoP to be submitted separately for approval)

Appendix C: Local Notices to Mariners Distribution List

Organisation	Contact
Aberdeen MRCC	SAR.response@mcga.gov.uk
Banff Harbour Marina	roads@aberdeenshire.gov.uk
Buckie Fishery Office Clyde Cruising Club (as per S36)	fo.buckie@scotland.gsi.gov.uk
Moray Council Buckie Harbour	buckieharbour@moray.gov.uk
Clyde Cruising Club (as per S36)	office@clyde.org
Cromarty Firth Port Authority including Nigg	cfpa@cfpa.co.uk
Findhorn Marina	info@findhornmarina.com
Fraserburgh Fishery Office	fo.fraserburgh@scotland.gsi.gov.uk
Fraserburgh Harbour	andrew@fraserburgh-harbour.co.uk
Ithaca Energy (Jacky & Beatrice Oil Field Operator)	TBC
Kingfisher and KIS-ORCA	kingfisher@seafish.co.uk
Lossiemouth Marina	info@lossiemouthmarina.com
Macduff Harbour	roads@aberdeenshire.gov.uk
Maritime Rescue Coordination Centre Shetland	TBC
Ministry of Defence	TBC
MORL Developers	TBC
Nairn Harbour	nairn.harbourmaster@gmail.com
Northern Lighthouse Board	navigation@nlb.org.uk
Port of Inverness	hm@portofinverness.co.uk
Scottish Fishermen's Federation	sff@sff.co.uk
Scottish Royal Yachting Association	admin@ryascotland.org.uk

Trinity House Navigational Directorate	Navigation.Director@thls.org
UK Hydrographic Offices	noticetomariners@ukho.gov.uk
Whitehills Marina	TBC
Wick Harbour Authority	malcolm.bremner@wickharbour.co.uk

Appendix D: MGN 371 Compliance Audit

MGN 371 Requirement	Where Addressed in NSP
Developers are responsible for ensuring that formally agreed variations in the co-ordinates of site perimeters and individual OREI structures are made available, on request, to interested parties at all project stages, including application for consent, development, array variation, operation and decommissioning.....For mariners' use, appropriate data should also be provided in latitude / longitude formats.	Section 8 - notifications This will also be included in the requirements of the ERCoP which will be drafted separately for approval
Recommended minimum safe (air) clearance between sea level conditions at Mean High Water Springs (MHWS) and wind turbines rotors are that they should be suitable for the vessel types identified in the traffic survey but generally not less than 22 metres, unless developers are able to offer proof that no risk exists to any vessel type with air drafts greater than the requested minimum.	Section 4.2 (project details)
It is considered necessary that a hydrographic survey of the site and its immediate environs extending to 500m outside the development area to be undertaken at each of the following stages: <ul style="list-style-type: none"> a) As part of the consent application b) Following installation of the development. c) On a pre-established periodicity during the life of the development (with survey frequency being determined by, amongst other considerations, the mobility of the seabed). d) Following decommissioning of all or part of the development. 	Surveys of the seabed required by the S36 and Marine Licence conditions following construction will be set out in the Project Environmental Management Plan (PEMP) and DP. The specification of these surveys will be agreed with MS-LOT but will take account of the requirements of MGN371 where relevant.
If the establishment of the development will alter maritime traffic patterns by necessitating vessels to avoid the area by seeking an alternative passage over areas last surveyed on UK Hydrographic Office nautical charts prior to 1986, it may be considered necessary that a hydrographic survey of these alternative passages and their immediate environs extending to 500m outside the alternative passages be undertaken.	Not applicable
All hydrographic surveys listed above should fulfil the requirements of International Hydrographic Organisation (IHO) Order 1 standard multibeam bathymetry in every respect, with final data being supplied as a digital density data set, and erroneous soundings flagged as deleted but included in the data set. A full report detailing survey methodology and equipment should accompany the surveys. On completion of each survey,	The methodologies to be applied to post-construction surveys will be set out in the PEMP. The methodologies and standards applied in the

results should be forwarded to the Hydrography Manager (MCA).	conduct of these surveys will be agreed with MS-LOT but will take account of the requirements of MGN371 where relevant.
It is recommended that, where possible, individual OREI marking should conform to a “spread sheet” layout, i.e. lettered on the horizontal axis, and numbered on the vertical axis. The detail of this will depend on the shape, geographical orientation and potential future expansion of each OREI development. MCA will advise on the specific requirements for each development.	The LMP provides details of the identification markings (which have been signed off in consultation with the MCA).
<u>Annex 5.</u> 1. Design Requirements.	
<i>All wind turbine generators and other OREI individual structures will each be marked with a clearly visible unique identification characters which can be seen by both vessels at sea level and aircraft (helicopters and fixed wing) from above.</i>	The LMP sets out the proposed marking including identification characters and in compliance with the requirements of MGN371.
<i>The identification characters shall each be illuminated by a low-intensity light visible from a vessel thus enabling the structure to be detected at a suitable distance to avoid a collision with it. For offshore wind farms, the size of the identification characters in combination with the lighting should be such that, under normal conditions of visibility and all known tidal conditions, they are clearly readable by an observer, stationed 3 metres above sea levels, and at a distance of a least 150 metres from the turbine...It is recommended that lighting for this purpose be hooded or baffled so as to avoid unnecessary light pollution or confusion with navigation marks. (Precise dimensions to be determined by the height of lights and necessary range of visibility of the identification numbers).</i>	The LMP sets out the proposed marking including identification characters and in compliance with the requirements of MGN371.
For aviation purposes, OREI structures should be marked with hazard warning lighting in accordance with CAA guidance and also with unique identification numbers (with illumination controlled from the site control centre and activated ‘as required’) on the upper works of the OREI structure so that aircraft can identify each installation from a height of 500 feet (150 metres) above the highest part of the OREI structure	The LMP sets out the requirements for aviation marking and lighting.
Wind Turbine Generators (WTG) shall have high contrast markings (dots or stripes) placed at 10 metre intervals on both sides of the blades to provide SAR helicopter pilots with a hover-reference point.	The LMP sets out the requirements for Blade Hover Reference Marking.

All OREI generators and transmission systems should be equipped with control mechanisms that can be operated from the OREI Central Control Room or through a single contact point.	The ERCoP (Section 9 of this NSP) will set out liaison agreements between BOWL and the coastguard, including contact details of the marine co-ordination centre which shall act as the single point of contact.
Throughout the design process for an OREI, appropriate assessments and methods for safe shutdown should be established and agreed, through consultation with MCA's Navigation Safety Branch, Search and Rescue Branch and other emergency support services.	The ERCoP (Section 9 of this NSP) will outline liaison agreements between BOWL and the coastguard, including protocol (and ability) for safe shutdown.
The OREI control mechanisms should allow the Control Room, single contact point Operator to fix and maintain the position of WTG blades, nacelles and other appropriate OREI moving parts to configurations determined by the Maritime Rescue Co-ordination Centre (MRCC). This same Operator must be able to immediately effect the control of offshore substations and export cables.	The ERCoP (Section 9 of this NSP) will outline liaison agreements between BOWL and the coastguard and provide further detail on the ability of the control room manager to fix and maintain the position of WTGs and component parts.
Nacelle hatches and other OREI enclosed spaces in which personnel are working should be capable of being opened from the outside. This will allow rescuers (e.g. helicopter winch-man) to gain access to such spaces if the occupants are unable to assist and when sea-borne approach is not possible. These spaces may be secured when no site personnel are present. OREI access areas, nacelle roofs and landing platforms should also be fitted with clearly marked safe areas, railings, hand holds and/or strong points for the securing of safety harnesses.	The ERCoP (Section 9 of this NSP) will outline evacuation procedures from WTGs to be followed.
WTG access ladders, although designed for entry by trained personnel using specialised equipment and procedures for turbine maintenance in calm weather, could conceivably be used, in an emergency situation, to provide refuge on the turbine structure for distressed mariners. This scenario should therefore be considered when identifying the optimum position of such ladders and take into account the prevailing wind, wave and tidal conditions.	<p>The ERCoP (Section 9 of this NSP) will outline evacuation procedures from WTGs to be followed including use of access ladders.</p> <p>Detailed design work on the wind turbine substructures (jackets) will take account of prevailing metocean conditions in designing the position of the access ladders.</p>

1. Operational Requirements	
The Central Control Room, or mutually agreed single contact point, should be manned 24 hours a day.	Section 6.4 (Marine Coordination Centre) provides an overview of the of the operational marine coordination centre.
The Central Control Room operator, or mutually agreed single contact point, should have a chart indicating the GPS position and unique identification numbers of each of the WTGs in the wind farm or individual devices in other types of OREI.	The ERCoP (Section 9 of this NSP) will outline the detail of the marine coordination centre and its commitment to have an appropriate chart with information as requested by the MCA.
All MRCCs will be advised of the contact telephone number of the Central Control Room, or single contact point (and vice versa).	The ERCoP (Section 9 of this NSP) will provide contact details of the marine coordination centre.
All MRCCs will have a chart indicating the GPS position and unique identification number of each of the WTGs in all wind farms or all devices in other types of OREI.	The ERCoP (Section 9 of this NSP) will outline liaison agreements (and provision of appropriate resources) with all MRCCs.
All search and rescue helicopter bases will be supplied with an accurate chart of all the OREI and their GPS positions.	The ERCoP (Section 9 of this NSP) will outline liaison agreements (and provision of appropriate resources) with all SAR helibases.
The Civil Aviation Authority shall be supplied with accurate GPS positions of all OREI structures for civil aviation navigation charting purposes.	Section 8 (notification of coordinates to UKHO for aviation charting)
2. Operational Procedures	
Upon receiving a distress call or other emergency alert from a vessel which is concerned about a possible collision with a WTG or is already close to or within a wind farm, or when the MRCC receives a report that persons are in actual or possible danger in or near to a wind farm and search and rescue aircraft and/or rescue boats or craft are required to operate over or within the wind farm, the MRCC will establish the position of the vessel and the identification numbers of any WTGs which are visible to the vessel. This information will be passed immediately to the Central Control Room, or single contact point, by the MRCC. A	The ERCoP (Section 9 of this NSP) will outline liaison agreements between BOWL and the coastguard and provide further detail on SAR protocol.

similar procedure will be followed when vessels are close to or within other types of OREI site.	
The control room operator, or single contact point, should immediately initiate the shut-down procedure for those WTGs as requested by the MRCC/SC, and maintain the WTG in the appropriate shut-down position, as requested by the MRCC, or as agreed with MCA Navigation Safety Branch or Search and Rescue Branch for that particular installation, until receiving notification from the MRCC that it is safe to restart the WTG.	The ERCoP (Section 9 of this NSP) will outline liaison agreements between BOWL and the coastguard, including protocol (and ability) for safe shutdown.
Communication procedures should be tested satisfactorily at least twice a year. Shutdown and other procedures should be tested as and when mutually agreed with MCA.	The ERCoP (Section 9 of this NSP) will outline liaison agreements between BOWL and the coastguard, including the agreed periodicity for testing of communication procedures as well as SAR events.
3. SAR Helicopter Procedures / Requirements	
If winching is to take place from/to a WTG, the WTG blades will have to be feathered and the rotor brakes applied (where feasible blades should be pinned - perhaps before major works commence). The nacelle should be rotated so that the blades are at 90 degrees off the wind with the wind blowing on to the left side of the nacelle e.g. if wind is blowing from 270 degrees, the nacelle will need to be rotated to right so that the hub is facing 360 degrees.	The ERCoP (Section 9 of this NSP) will outline procedures to be followed during WTG shut down and winching events.
If winching is to take place to/from a nacelle, wherever possible wind farm personnel should be in the nacelle to assist the winchman.	The ERCoP (Section 9 of this NSP) will outline procedures to be followed during winching events.
In poor visibility or at night, any lighting on WTGs may be required to be switched on or off - at the discretion of the helicopter pilot.	The LMP sets out the requirements for aviation lighting.