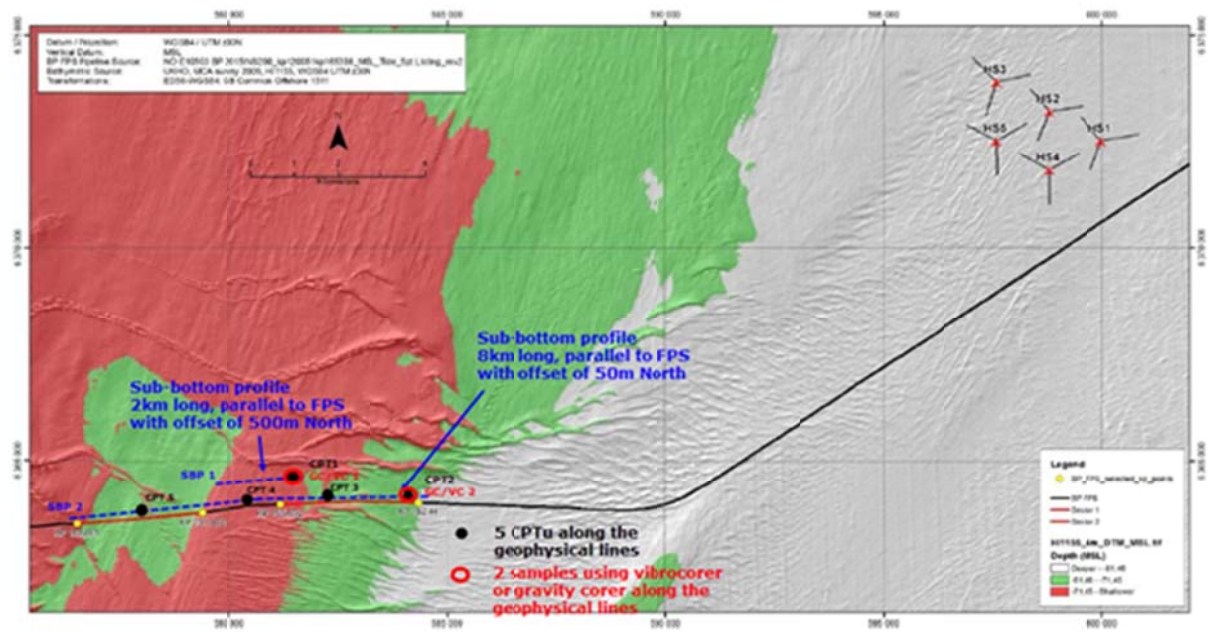


Location of activity - Hywind Scotland geotechnical survey near FPS - SBP



Line ID	Easting [m] **	Northing [m] **
SBP 1	584446,39	6364285,19
	580838,17	6364228,69
	580592,45	6364217,01
	577293,18	6363839,32
	576593,59	6363780,19
SBP 2	581408,74	6364251,57
	579948,13	6364103,71

** The coordinates are approximate values

Location ID	Target penetration [m]	Easting [m] **	Northing [m] **
CPT 01	6.0	581408,74	6364251,57
VC/GC 01 *	3.0	581408,74	6364251,57
CPT 02	6.0	584446,39	6364285,19
VC/GC 02 *	3.0	584446,39	6364285,19
CPT 03	6.0	580838,17	6364228,69
CPT 04	6.0	580592,45	6364217,01
CPT 05	6.0	577293,18	6363839,32

* VC/GC = Vibrocoring or Gravity coring

** The coordinates are approximate values