

The logo for Moray West Offshore Windfarm. It features the word "MORAY WEST" in a bold, dark teal sans-serif font. Below it, the words "OFFSHORE WINDFARM" are written in a lighter green, all-caps sans-serif font. The letter 'O' in "MORAY" is stylized as a green circle with a white horizontal line through its center. In the background, there is a large, faint green circular graphic composed of several segments, resembling a stylized sun or a wind turbine hub.

# **MORAY WEST**

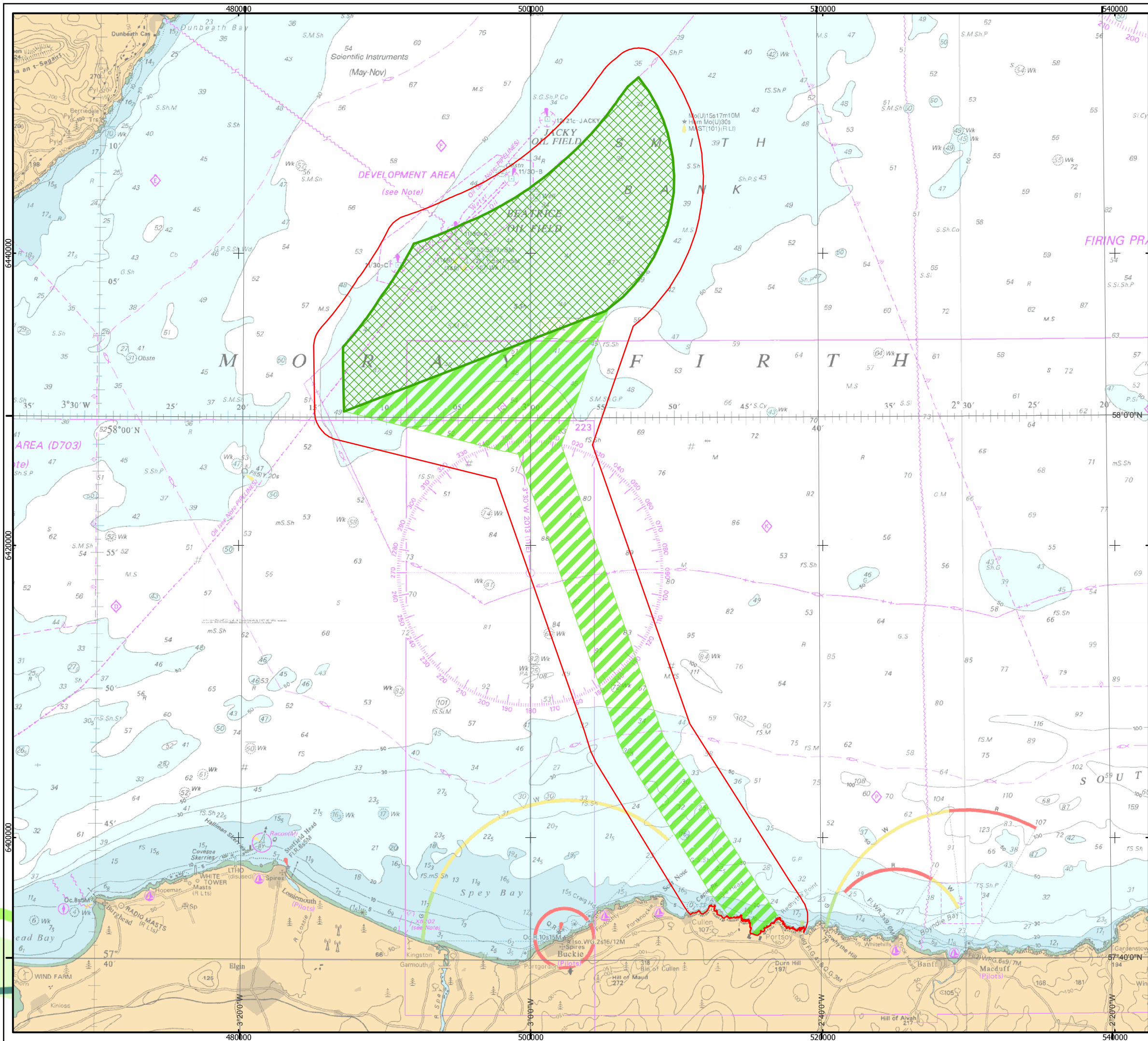
## **OFFSHORE WINDFARM**

A series of overlapping, wavy lines in shades of green and teal, creating a sense of movement and depth. These lines are positioned above a solid dark teal rectangular area that serves as the background for the lower text.

### **Offshore EIA Report**

Moray Offshore Windfarm (West) Limited

### **Chapter 16 Archaeology and Cultural Heritage – Figures**



# MORAY WEST OFFSHORE WINDFARM

## KEY

-  Moray West Site
-  Offshore Export Cable Corridor
-  Development Archaeological Study Area (ASA)

Horizontal Scale: 1:250,000 A3 Chart  
0 5,000 10,000 Meters

Geodetic Parameters: WGS84 UTM Zone 30N

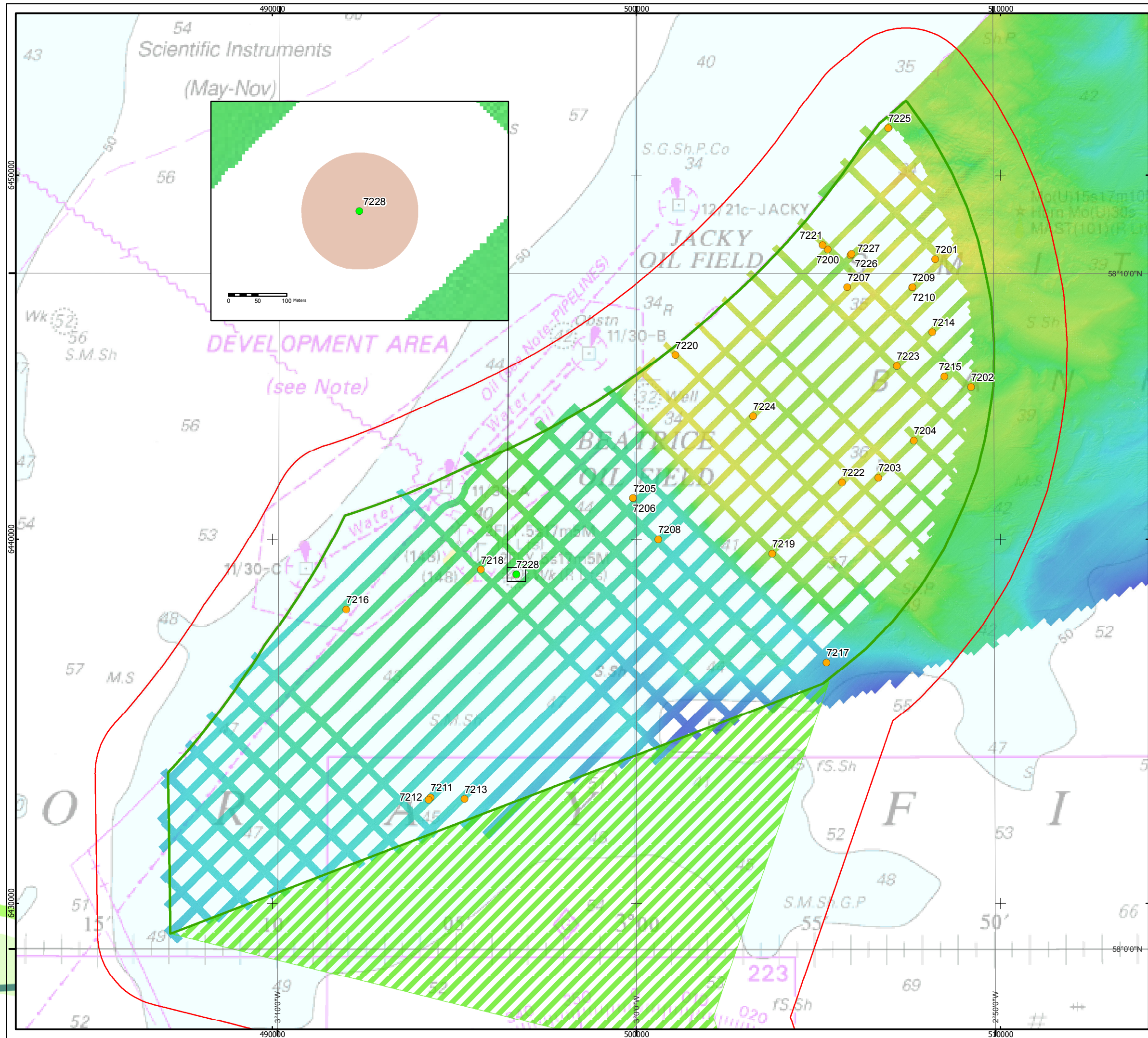
Produced: KJF  
Reviewed: RC  
Approved: FG

Date: 06/03/2018 Revision: C  
REF: 8460005-PPW0180-GOE-MAP-030

Figure 16.4.1 Location Map

Moray Offshore  
Windfarm (West) Ltd





# MORAY WEST OFFSHORE WINDFARM

## KEY

- Moray West Site
- Offshore Export Cable Corridor
- Bathymetry Survey Lines
- Development Archaeological Study Area (ASA)
- A2 (Uncertain origin of possible archaeological interest)
- A3 (Historic record of possible archaeological interest with no corresponding geophysical anomaly)
- 7228 100 m Archaeological Exclusion Zone

Horizontal Scale: 1:100,000

0 2,000 4,000 Meters

A3 Chart

N

Geodetic Parameters: WGS84 UTM Zone 30N

Produced: KJF  
Reviewed: RC  
Approved: FG

Date: 06/03/2018

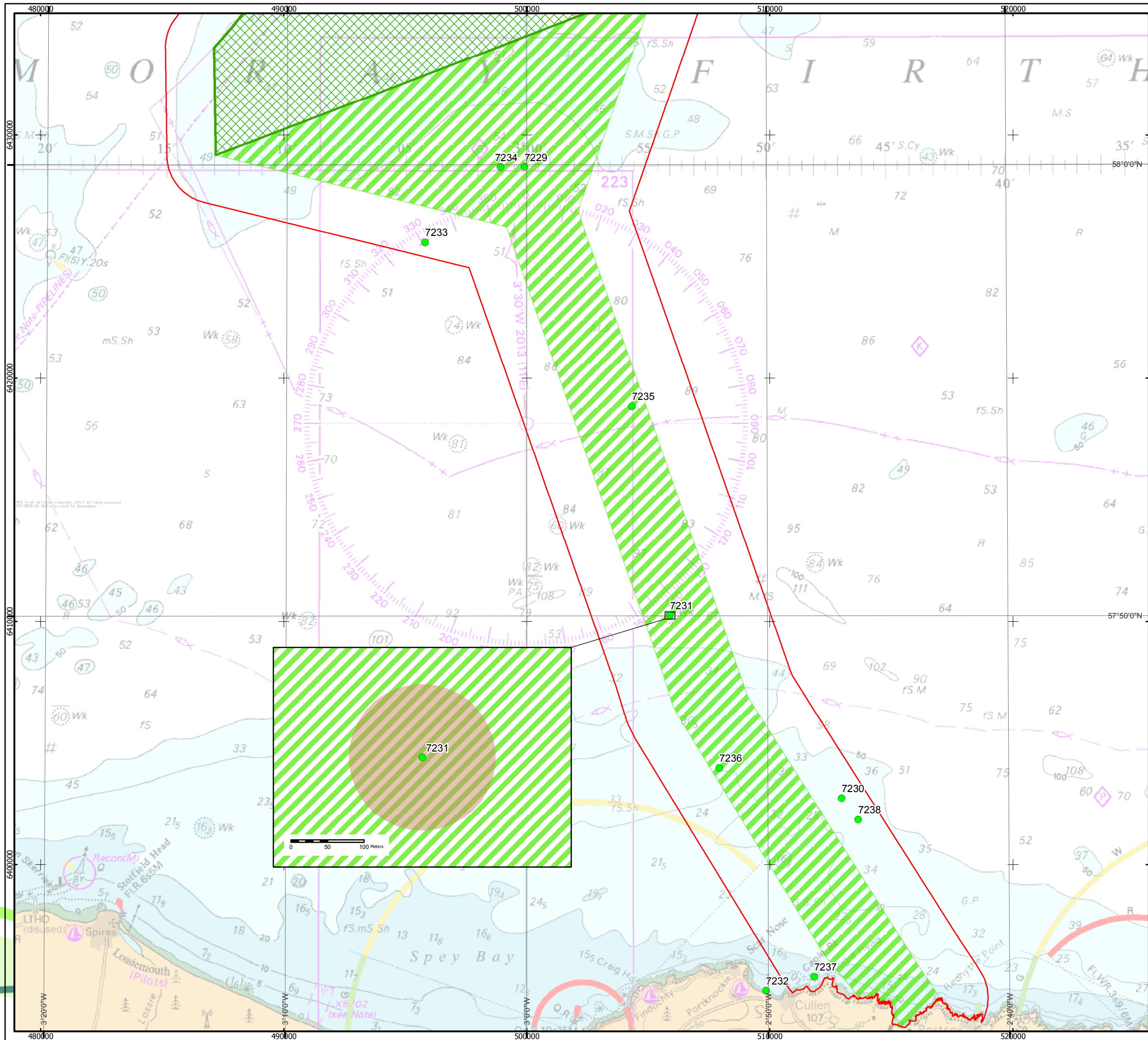
Revision: B

REF: 8460005-PPW0180-GOE-MAP-031

Figure 16.4.2 Seabed Features  
of Archaeological Potential  
within Moray West Site

Moray Offshore  
Windfarm (West) Ltd





# MORAY WEST OFFSHORE WINDFARM

## KEY

- Moray West Site
- Offshore Export Cable Corridor
- Development Archaeological Study Area (ASA)
- A3 (Historic record of possible archaeological interest with no corresponding geophysical anomaly)
- 7231 100 m Archaeological Exclusion Zone

Horizontal Scale: 1:150,000

A3 Chart

0 2,500 5,000 Meters

Geodetic Parameters: WGS84 UTM Zone 30N

Produced: KJF  
Reviewed: RC  
Approved: FG

Date: 06/03/2018

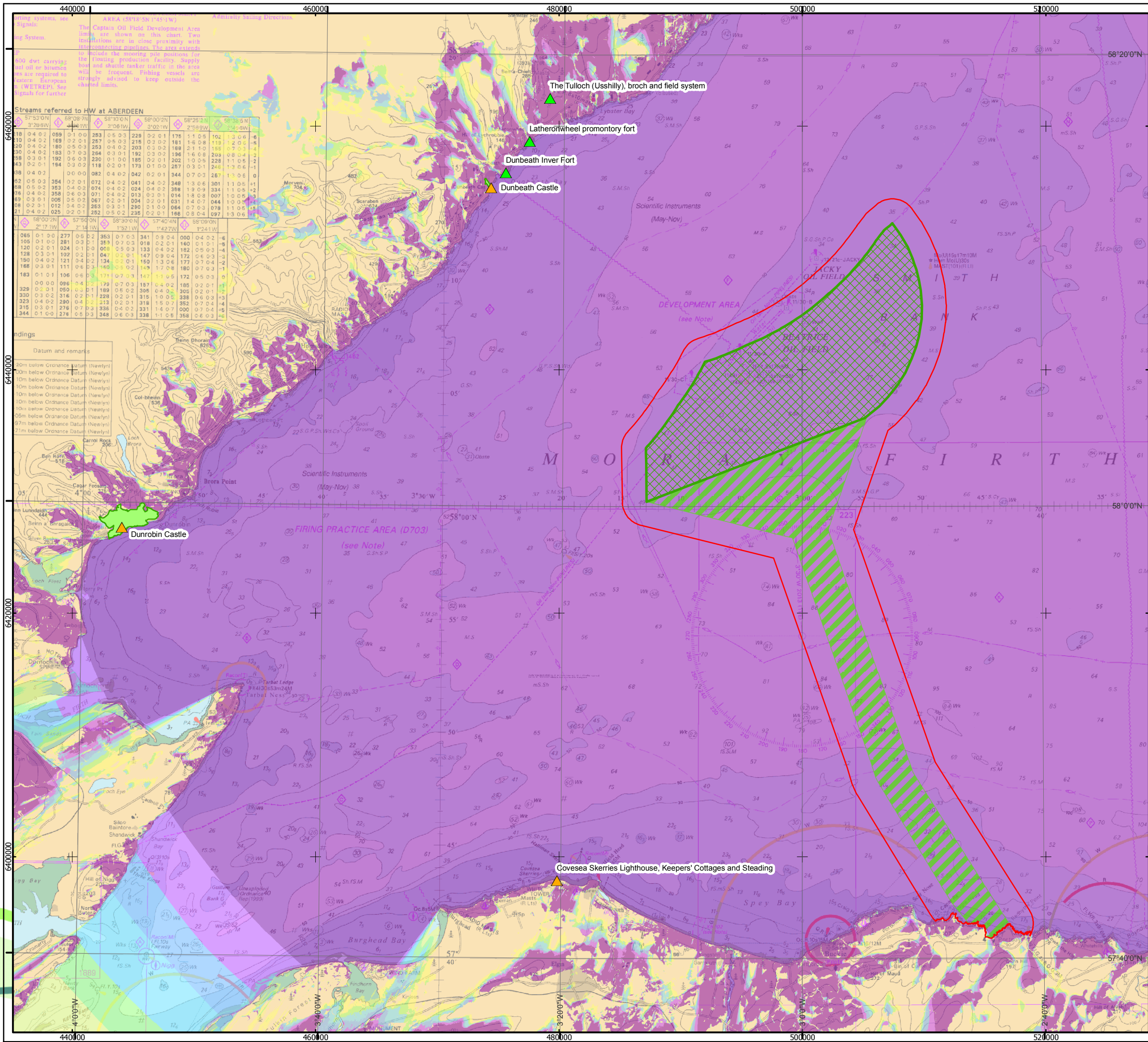
Revision: B

REF: 8460005-PPW0180-GOE-MAP-032

Figure 16.4.3 Seabed Features of Archaeological Potential within the Export Cable Route

Moray Offshore  
Windfarm (West) Ltd





# MORAY WEST OFFSHORE WINDFARM

**KEY**

- Moray West Site
- Offshore Export Cable Corridor
- Development Archaeological Study Area (ASA)
- Scheduled Monuments
- Category A-listed Structure
- Garden and Designed Landscapes

**No. of Turbines (285m) Visible**

	0
	1 - 10
	11 - 20
	21 - 30
	31 - 40
	41 - 51
	52 - 62

Horizontal Scale: 1:300,000  
A3 Chart  
0 5,000 10,000 Meters

Geodetic Parameters: WGS84 UTM Zone 30N

Produced: KJF  
Reviewed: RC  
Approved: FG

Date: 14/03/2018  
Revision: C

REF: 8460005-PPW0180-GOE-MAP-033

Figure 16.4.4 Onshore Receptors within the ZTV Identified for Setting Impacts

Moray Offshore Windfarm (West) Ltd



© Crown copyright and database rights 2018 Ordnance Survey 0100031673. © Local Government Information House Limited copyright and database rights 2018 0100031673. Moray Offshore Windfarm (West) Limited © 2018. This document is the property of contractors and sub-contractors and shall not be reproduced nor transmitted without prior written approval.

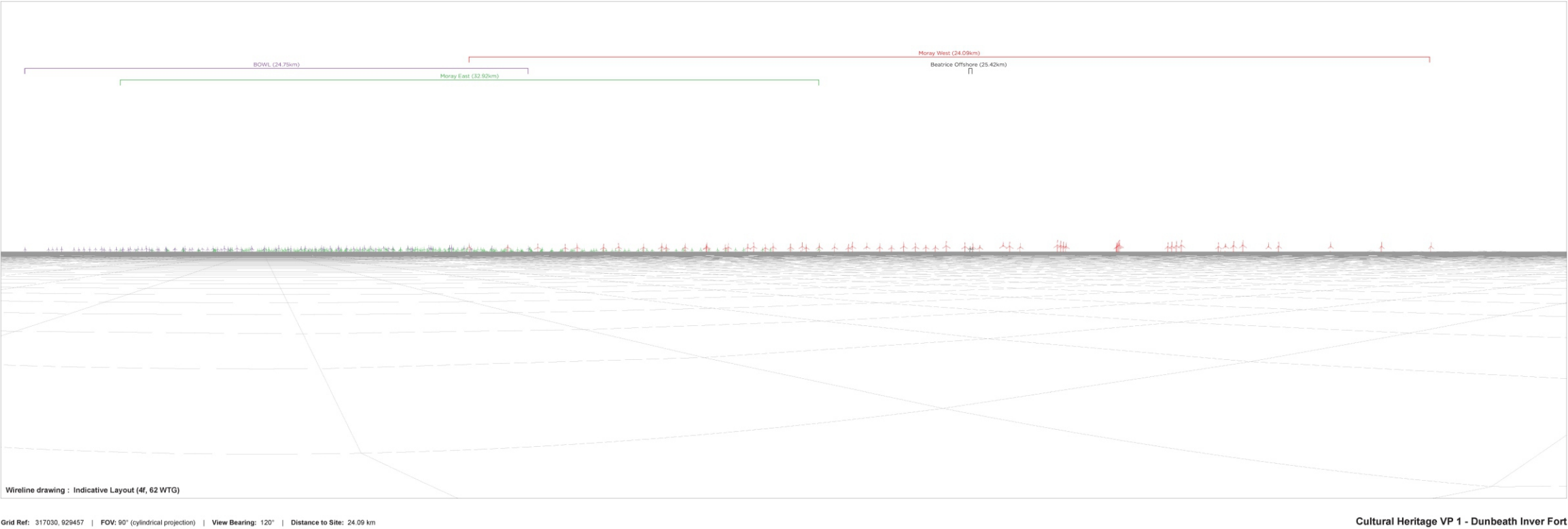


Figure 16.7.1a Dunbeath Inver Forth (SM5073): Cumulative Wirelines

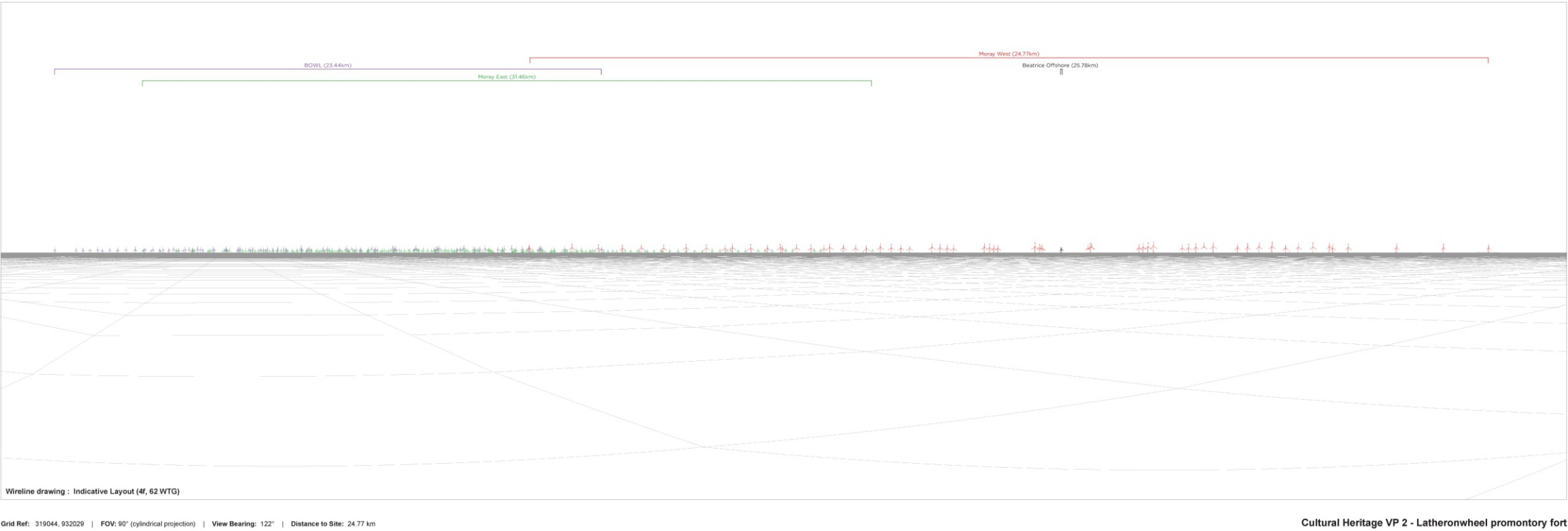


Figure 16.7.1b Latheronwheel Promontory Fort (SM5182): Cumulative Wirelines

Geodetic Parameters: N/A

Produced: KJF  
Reviewed: RC  
Approved: FG

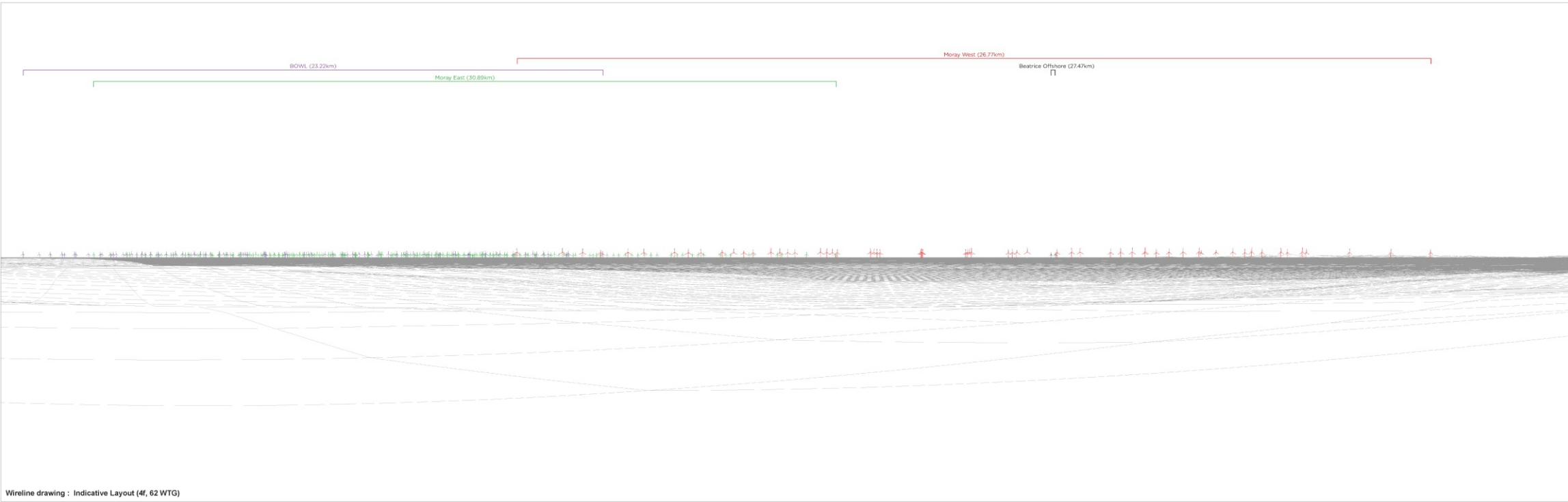
Date: 13/03/2018 Revision: B  
REF: 8460005-PPW0180-GOE-MAP-030

Figure 16.7.1 Dunbeath Inver Forth (SM5073) and Latheronwheel Promontory Fort (SM5182): Cumulative Wirelines

Moray Offshore  
Windfarm (West) Ltd



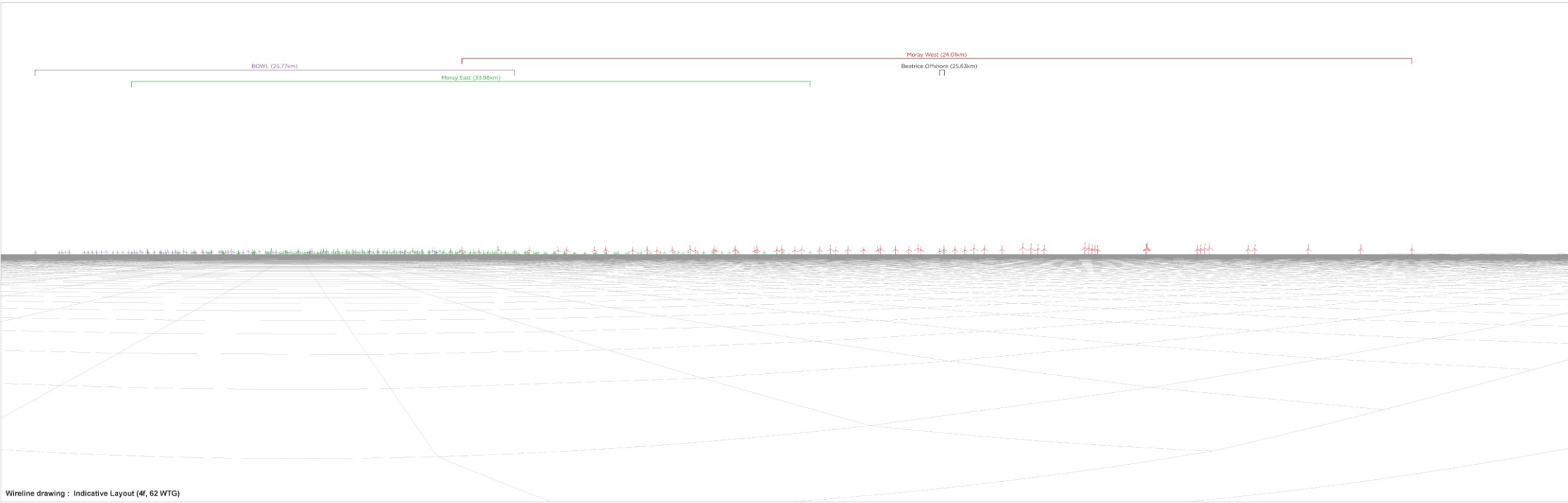
© Crown copyright and database rights 2018 Ordnance Survey 0100031673. © Local Government Information House Limited copyright and database rights 2018 0100031673. Moray Offshore Windfarm (West) Limited © 2018. This document is the property of contractors and sub-contractors and shall not be reproduced nor transmitted without prior written approval.



Grid Ref: 320757, 935527 | FOV: 90° (cylindrical projection) | View Bearing: 130° | Distance to Site: 26.77 km

Cultural Heritage VP 3 - The Tulloch (Usshilly), broch and field system

Figure 16.7.2a The Tulloch (Usshilly), Broch and Field System (SM599): Cumulative Wirelines



Grid Ref: 315801, 928264 | FOV: 90° (cylindrical projection) | View Bearing: 118° | Distance to Site: 24.01 km

Cultural Heritage VP 5 - Dunbeath Castle

Figure 16.7.2b Dunbeath Castle (LB7936): Cumulative Wirelines

Geodetic Parameters: N/A

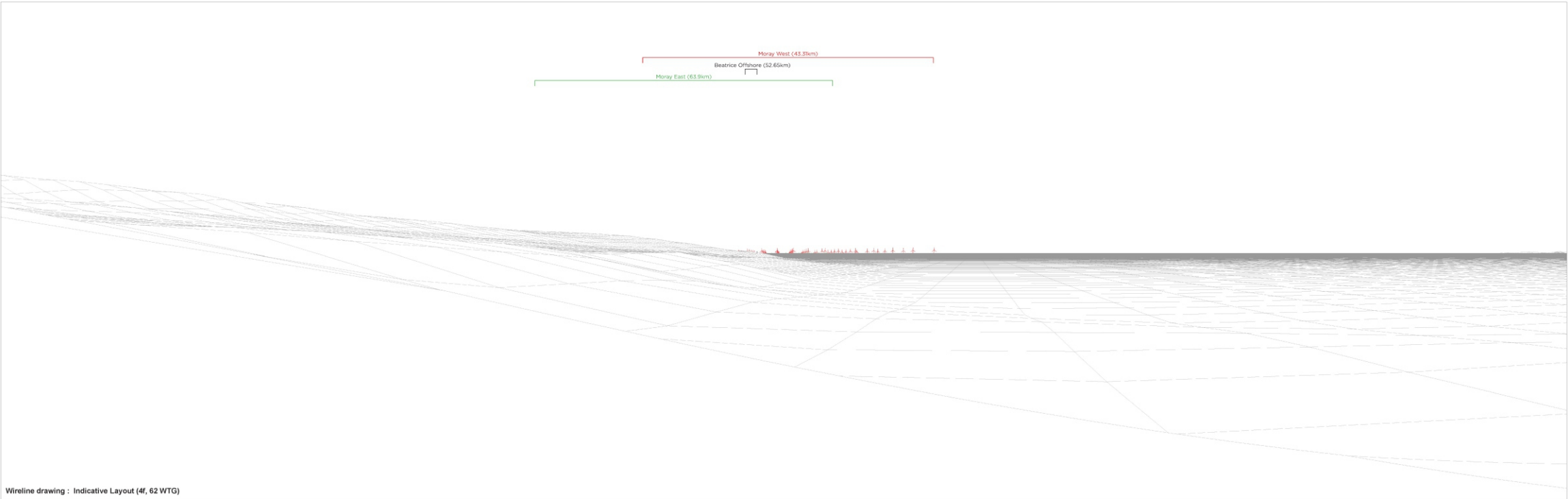
Produced: KJF  
Reviewed: RC  
Approved: FG

Date: 13/03/2018	Revision: B
REF: 8460005-PPW0180-GOE-MAP-033	

Figure 16.7.2 The Tulloch (Usshilly), Broch and Field System (SM599) and Dunbeath Castle (LB7936): Cumulative Wirelines



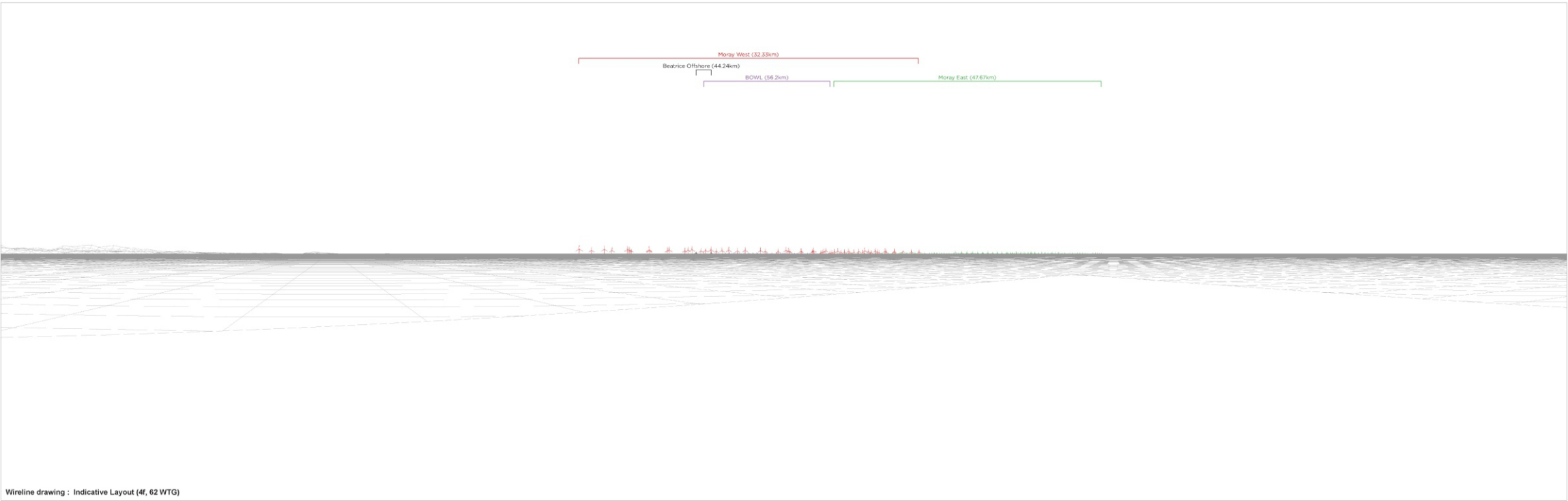
© Crown copyright and database rights 2018 Ordnance Survey 0100031673. © Local Government Information House Limited copyright and database rights 2018 0100031673. Moray Offshore Windfarm (West) Limited © 2018. This document is the property of contractors and sub-contractors and shall not be reproduced nor transmitted without prior written approval.



Grid Ref: 285049, 900820 | FOV: 90° (cylindrical projection) | View Bearing: 79° | Distance to Site: 43.31 km

Cultural Heritage VP 4 - Dunrobin Castle

Figure 16.7.3a Dunrobin Castle (LB7044): Cumulative Wirelines



Grid Ref: 320375, 871273 | FOV: 90° (cylindrical projection) | View Bearing: 26° | Distance to Site: 32.33 km

Cultural Heritage VP 9 - Covesea Skerries Lighthouse, Keepers' Cottages and Steading

Figure 16.7.3b Covesea Skerries Lighthouse, Keeper's Cottage and Steading (LB3705): Cumulative Wirelines

Geodetic Parameters: N/A

Produced: KJF  
Reviewed: RC  
Approved: FG

Date: 13/03/2018 | Revision: B

REF: 8460005-PPW0180-GOE-MAP-034

Figure 16.7.3 Dunrobin Castle (LB7044) and Covesea Skerries Lighthouse, Keeper's Cottage and Steading (LB3705): Cumulative Wirelines

Moray Offshore  
Windfarm (West) Ltd