



MORAY WEST

OFFSHORE WINDFARM

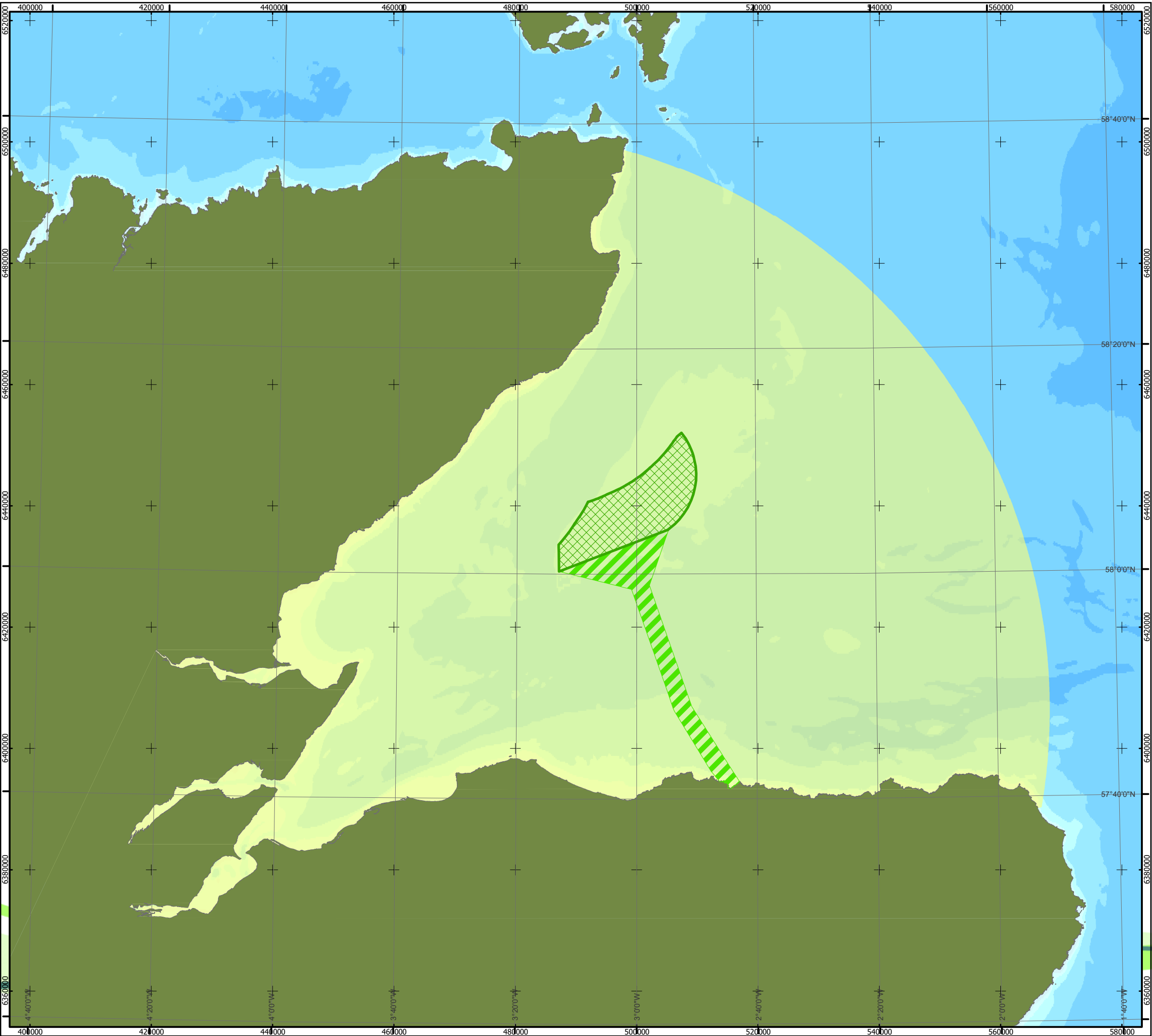


Offshore EIA Report

Moray Offshore Windfarm (West) Limited

Chapter 17 Other Human Activities– Figures

Moray Offshore Windfarm (West) Limited © 2018. This document is the property of contractors and sub-contractors and shall not be reproduced nor transmitted without prior written approval.
Contains OS data © Crown copyright and database right (2018).
Digital bathymetry has been derived from the EMOdnet Bathymetry portal (<http://www.emodnet-bathymetry.eu>).




MORAY WEST OFFSHORE WINDFARM

KEY

-  Moray West Site
-  Offshore Export Cable Corridor
-  Study Area

Bathymetry (m LAT)

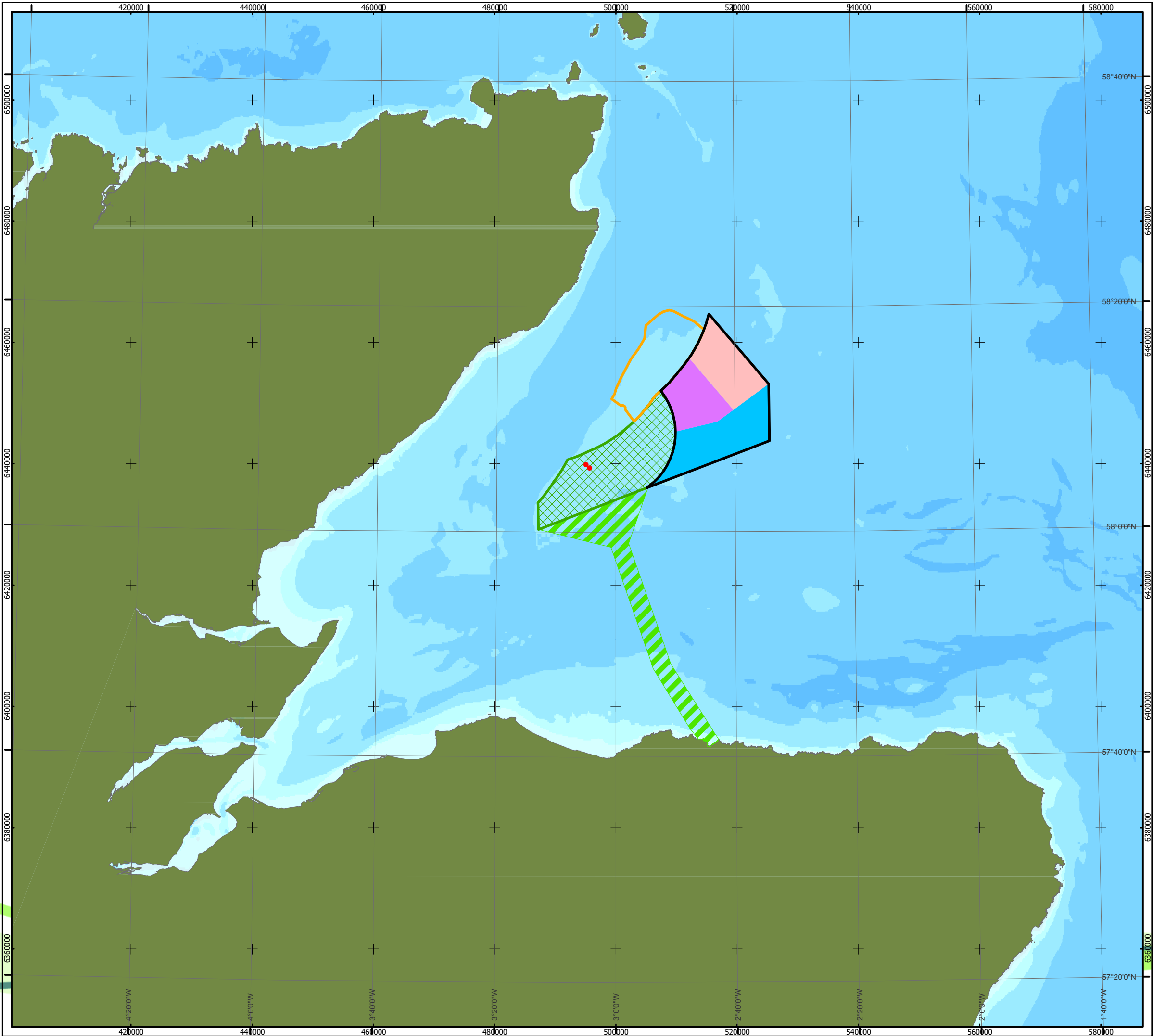
-  ≤500
-  ≤100
-  ≤50
-  ≤20
-  ≤10

Horizontal Scale: 1:600,000
A3 Chart
0 10,000 20,000 Meters
Geodetic Parameters: WGS84 UTM Zone 30N
Produced: RC
Reviewed: SM
Approved: FG
Date: 28/03/2018 Revision: A
REF: 8460005-PPW0180-GOE-MAP-013

Figure 17.4.1: Other Human
Activities Study Area

Moray Offshore
Windfarm (West) Ltd

Moray Offshore Windfarm (West) Limited © 2018. This document is the property of contractors and sub-contractors and shall not be reproduced nor transmitted without prior written approval.
Contains OS data © Crown copyright and database right (2018).
Digital bathymetry has been derived from the EMODnet Bathymetry portal (<http://www.emodnet-bathymetry.eu>).



MORAY WEST OFFSHORE WINDFARM

KEY

- Moray West Site
- Offshore Export Cable Corridor
- MacColl Offshore Wind Farm
- Stevenson Offshore Wind Farm
- Telford Offshore Wind Farm
- Moray East Offshore Wind Farm Site
- Beatrice Offshore Wind Farm
- Beatrice Demonstrator Turbine

Bathymetry (m LAT)

- ≤500
- ≤100
- ≤50
- ≤20
- ≤10

Horizontal Scale: 1:600,000

0 11,000 22,000 Meters



Geodetic Parameters: WGS84 UTM Zone 30N

Produced: RC
Reviewed: SM
Approved: FG

Date: 17/04/2018

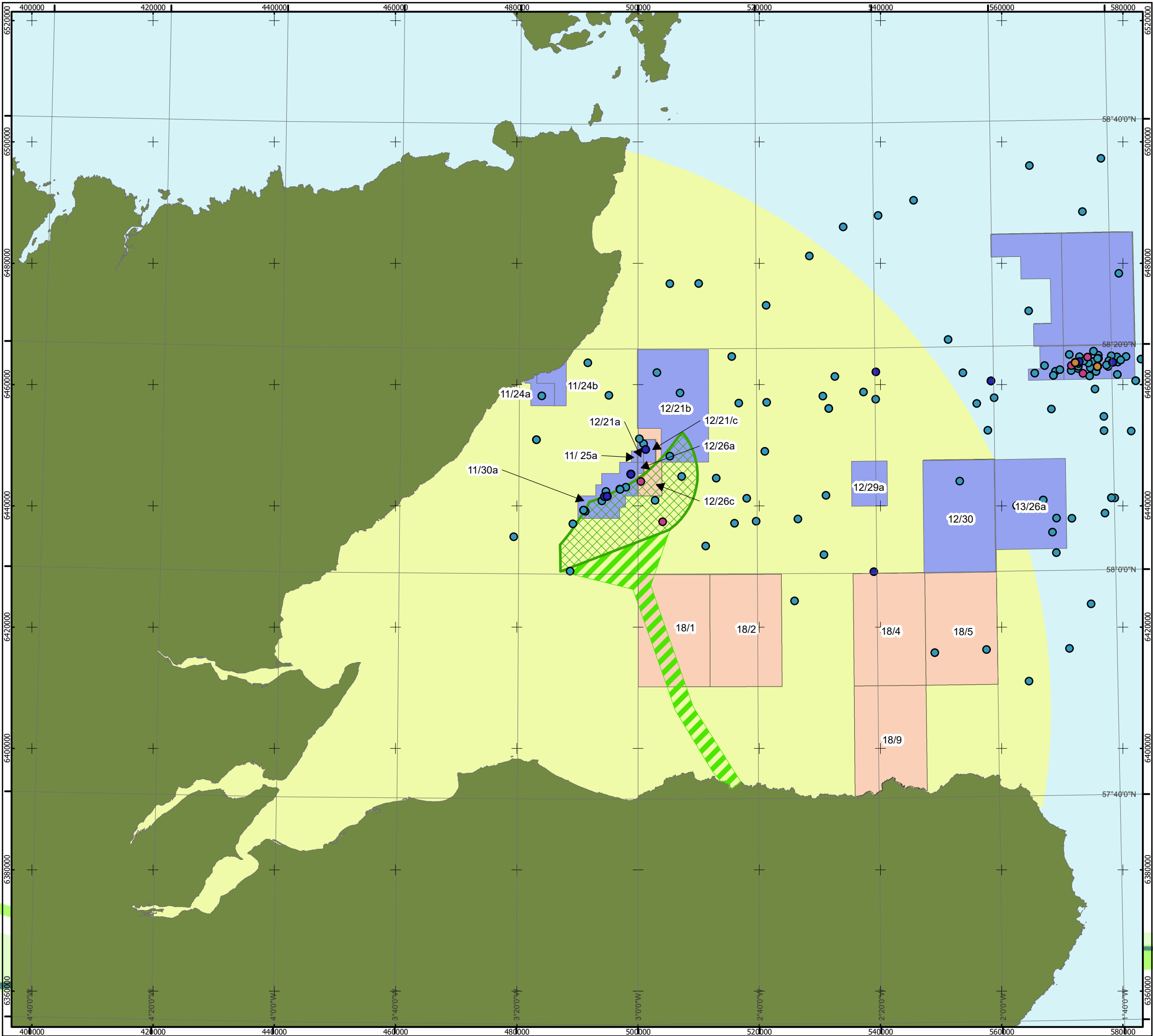
Revision: B

REF: 8460005-PPW0180-GOE-MAP-014

Figure 17.4.2: Other Offshore
Wind Farm Developments

Moray Offshore
Windfarm (West) Ltd

Moray Offshore Windfarm (West) Limited © 2018. This document is the property of contractors and sub-contractors and shall not be reproduced nor transmitted without prior written approval.
Contains OS data © Crown copyright and database right (2018).
Digital bathymetry has been derived from the EMOdnet Bathymetry portal (<http://www.emodnet-bathymetry.eu>).
Contains public sector information licensed under the Open Government License v3.0 – Data obtained from CD4 – Oil and Gas Data UK



MORAY WEST

OFFSHORE WINDFARM

KEY

- Moray West Site
- Offshore Export Cable Corridor
- Study Area
- Licensed Offshore Oil and Gas Blocks
- 28th Round Second Tranche Blocks Provisionally Awarded

Oil and/or Gas Well

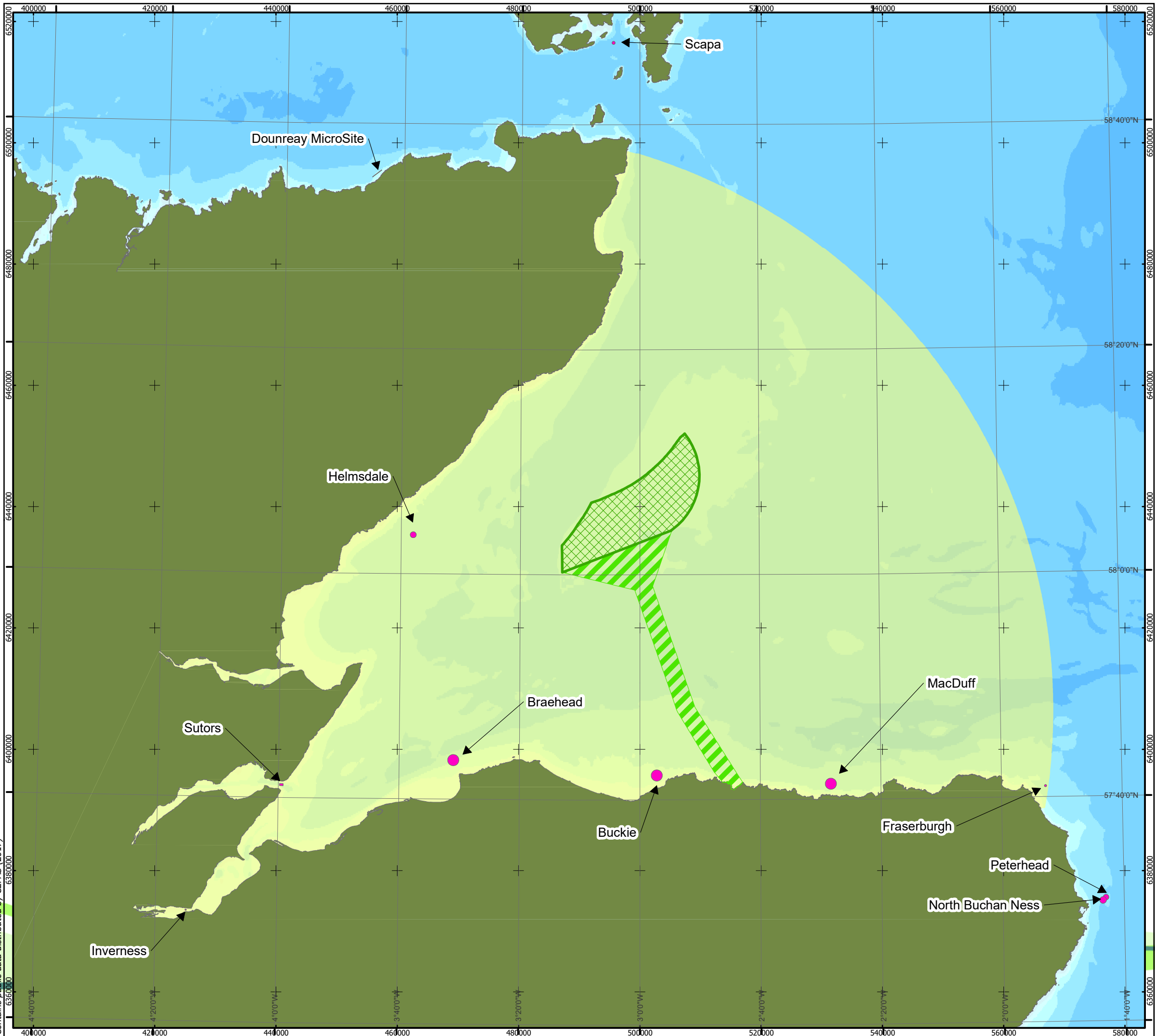
- Drilling
- Completed
- Plugged and
- Suspended

Horizontal Scale: 1:600,000
A3 Chart
0 10,000 20,000 Meters
Geodetic Parameters: WGS84 UTM Zone 30N
Produced: RC
Reviewed: SM
Approved: FG
Date: 03/05/2018
Revision: B
REF: 8460005-PPW0180-GOE-MAP-015

Figure 17.4.3: Oil and Gas Infrastructure and Licenced Blocks

Moray Offshore Windfarm (West) Ltd

Moray Offshore Windfarm (West) Limited © 2018. This document is the property of contractors and sub-contractors and shall not be reproduced nor transmitted without prior written approval.
Contains OS data © Crown copyright and database right (2018)
Contains public data distributed by CEFRAS (2017)

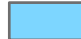




MORAY WEST OFFSHORE WINDFARM

KEY

-  Moray West Site
-  Offshore Export Cable Corridor
-  Study Area
-  Open Marine Disposal Site

Bathymetry (m LAT)

-  ≤500
-  ≤100
-  ≤50
-  ≤20
-  ≤10

Horizontal Scale: 1:600,000

0 10,000 20,000 Meters



Geodetic Parameters: WGS84 UTM Zone 30N

Produced: RC
Reviewed: SM
Approved: FG

Date: 04/04/2018

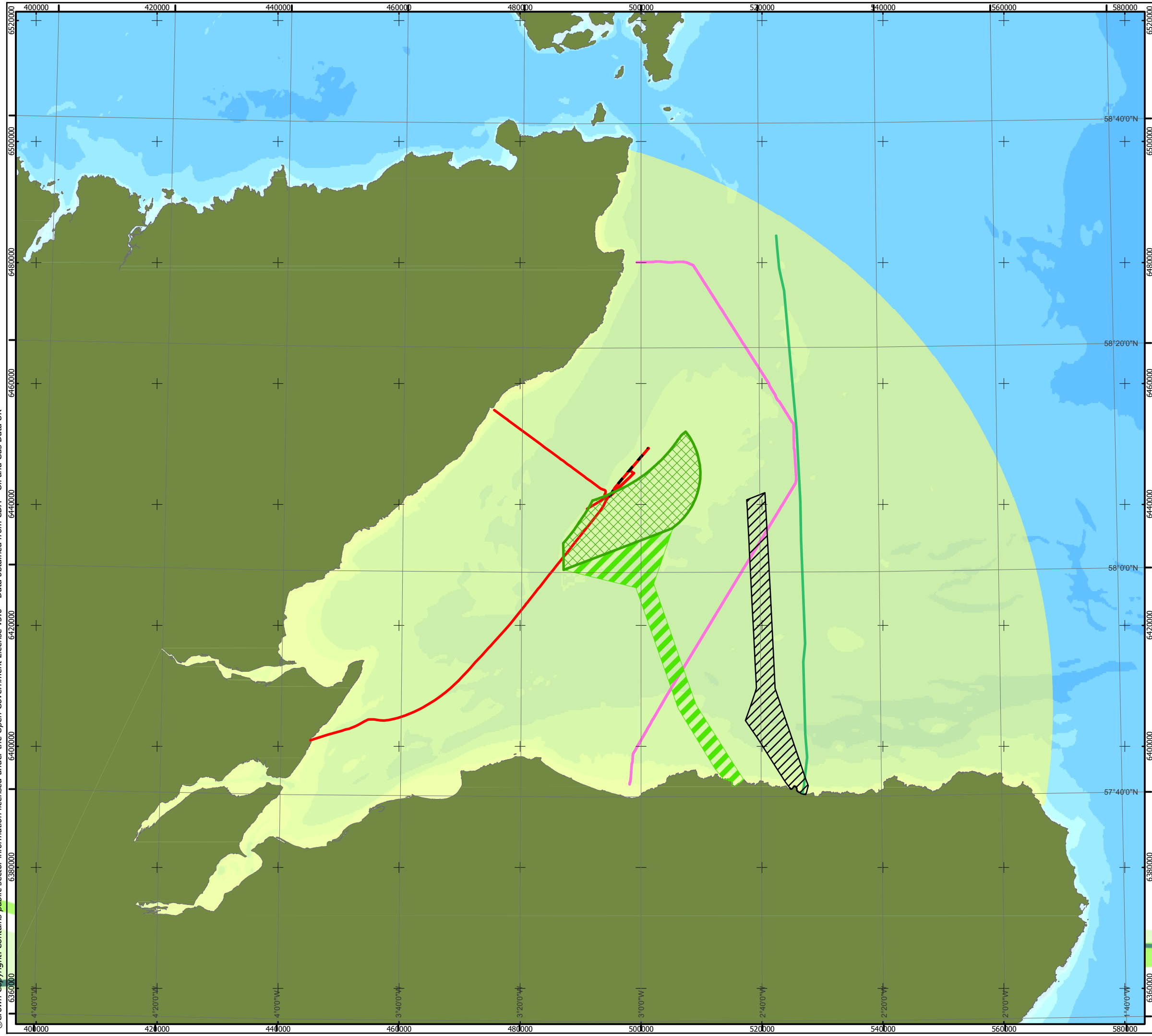
Revision: B

REF: 8460005-PPW0180-GOE-MAP-016

Figure 17.4.4: Open Marine
Disposal Sites

Moray Offshore
Windfarm (West) Ltd

Moray Offshore Windfarm (West) Limited © 2018. This document is the property of contractors and sub-contractors and shall not be reproduced nor transmitted without prior written approval.
Contains OS data © Crown copyright and database right (2019).
Digital bathymetry has been derived from the EMOdnet Bathymetry portal (<http://www.emodnet-bathymetry.eu>).
©Crown Copyright. Contains public sector information licensed under the Open Government License v3.0 – Data obtained from CDA – Oil and Gas Data UK



MORAY WEST OFFSHORE WINDFARM

- KEY**
- Moray West Site
 - Offshore Export Cable Corridor
 - Beatrice Offshore Wind Farm Export Cable Corridor
 - Moray East Offshore Export Cable Corridor
 - Caithness - Moray - Shetland HVDC Link
 - PLU2561 Beatrice AP to Jacky 86.5mm Power Cable
 - SHEFA-2 Fiber Optic Submarine Cable
 - Beatrice Pipeline
 - Study Area

- Bathymetry (m LAT)**
- <=500
 - <=100
 - <=50
 - <=20
 - <=10

Horizontal Scale: 1:600,000
0 10,000 20,000 Meters
A3 Chart

Geodetic Parameters: WGS84 UTM Zone 30N

Produced: RC
Reviewed: SM
Approved: FG

Date: 03/05/2018
Revision: B
REF: 8460005-PPW0180-GOE-MAP-017

Figure 17.4.5: Subsea Cables and Pipelines

Moray Offshore
Windfarm (West) Ltd