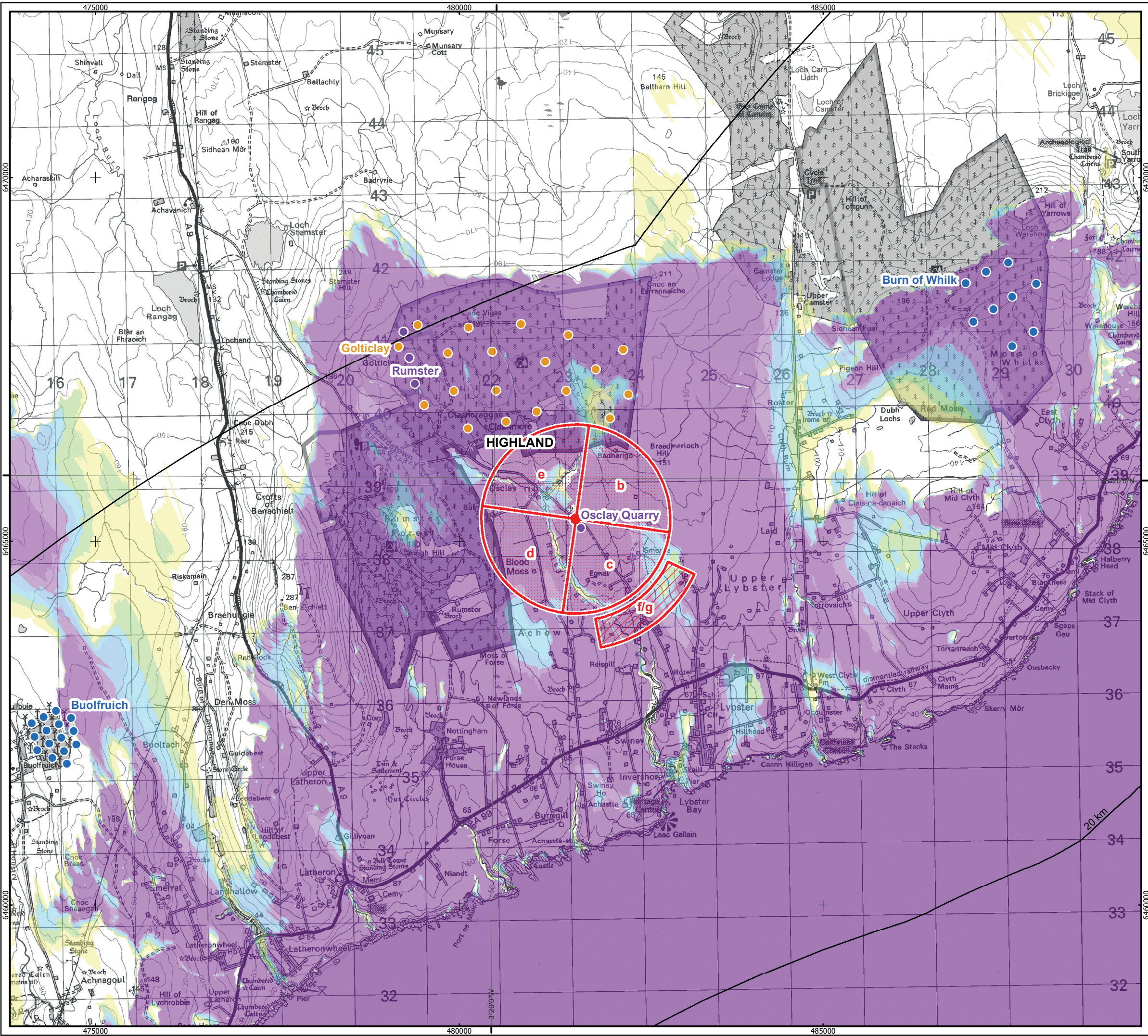


Grid Ref **323133 938505** Distance to nearest turbine **28.42km** AOD **122m**

FOV shown in included Highland Council 75mm Views

Approach from A99. Turn off to north signed Achavanich, west of Lybster. Viewpoint is close to high point on the road to the south of the junction with the minor road south of Osclay.



MORAY WEST OFFSHORE WINDFARM

KEY

50km Study Area Boundary

10km Distance Radii

Viewpoint Location

Views used from this location

Fields of View used in Panoramic Views

Field of View used in Photomontages

Cumulative Wind Farms

Operational / Under Construction

Consented

Application

Zone of Theoretical Visibility - No. of Turbines (285m) Visible*

1 - 10

11 - 20

21 - 30

31 - 40

41 - 50

51 - 62

Note:
* For Full ZTV parameters see Figure 14.7.1

Horizontal Scale: 1:50,000 A3 Chart

0 1,000 2,000 Meters

Geodetic Parameters: WGS84 UTM Zone 30N

Produced: MJF

Reviewed: RC

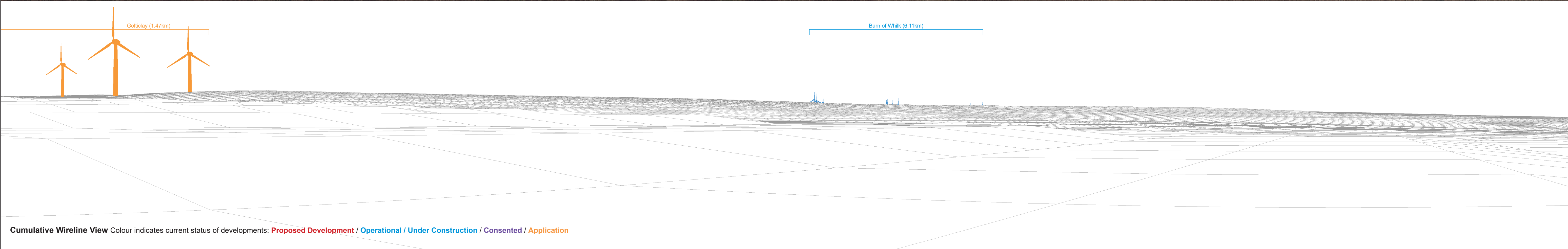
Approved: FG

Date: 07/05/2018 Revision: D

REF: 8460005-PPW0180-GOE-MAP-155

Figure 14.7.14a Viewpoint 6
Minor Road (south-east of Osclay) -
Viewpoint Location

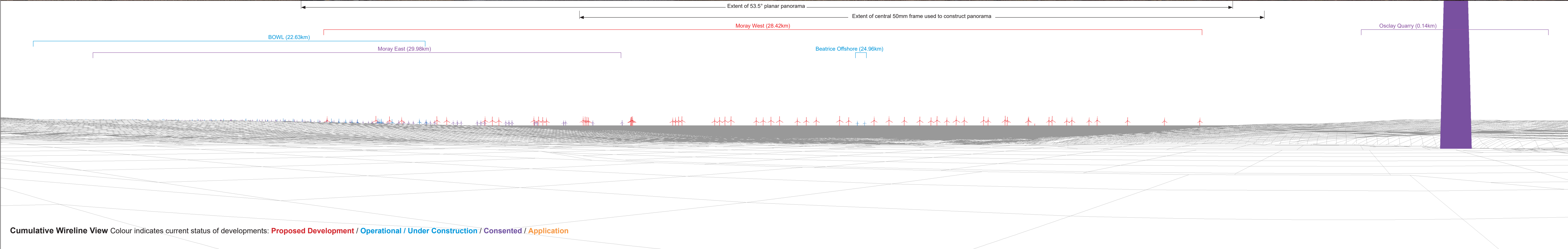
Moray Offshore
Windfarm (West) Ltd





Baseline View (BOWL has been photomontaged into this view)

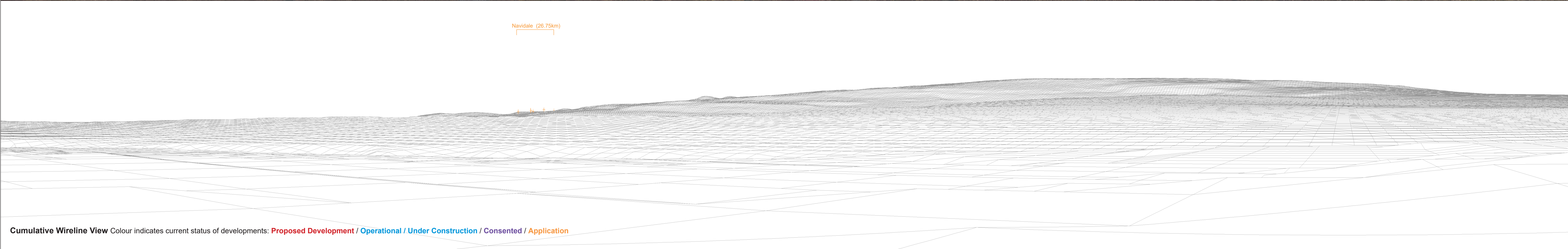
This image provides landscape and visual context only





Baseline View

This image provides landscape and visual context only



Cumulative Wireline View Colour indicates current status of developments: Proposed Development / Operational / Under Construction / Consented / Application



Baseline View

This image provides landscape and visual context only

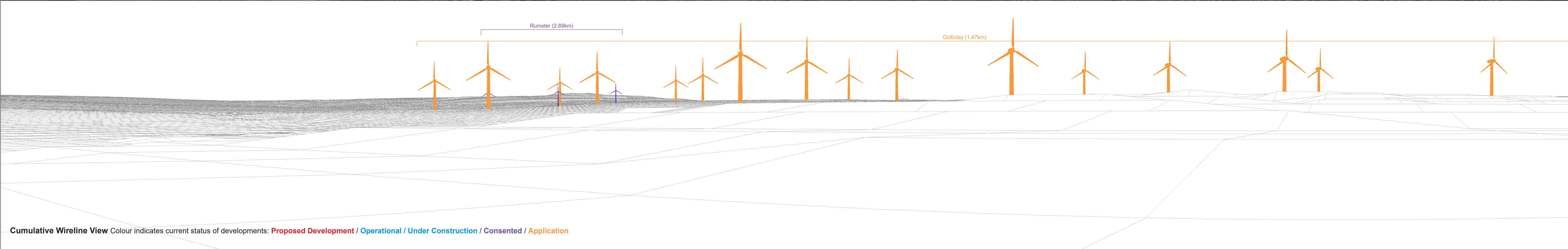
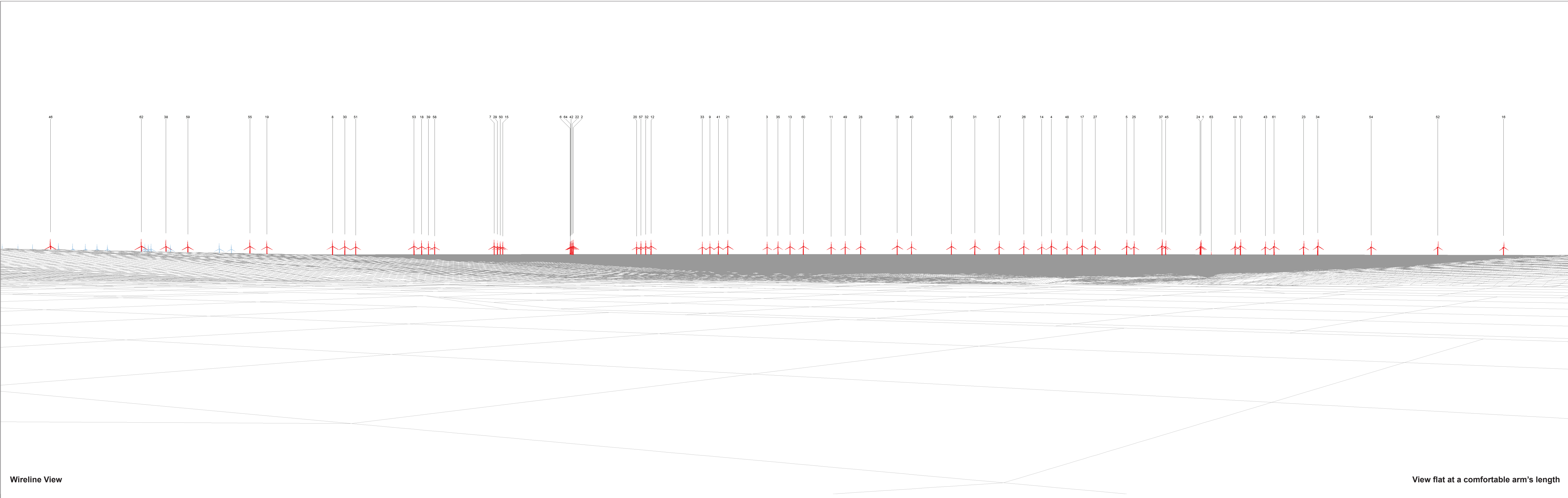


Figure 14.7.14e

04 / 06 / 2018 | 160969_WDA | 180604_160969_WDA_LVIA_SNH_THC_COMB_REV.G



OS reference	323133 E 938505 N	Horizontal field of view	53.5° (planar projection)	Camera height	1.5 m AGL
Elevation	122 m AOD	Principal distance	812.5 mm		
Direction of view	147°	Paper size	841 x 297 mm (half A1)		
Nearest turbine	28.42 km	Correct printed image size	820 x 260 mm		

Figure 14.7.14f
Viewpoint 6 : Minor Road (south-east of Osclay) Wireline
© Crown copyright and database rights (2018) OS (license No 0100058708)



Photomontage

View flat at a comfortable arm's length

OS reference	323133 E 938505 N	Horizontal field of view	53.5° (planar projection)	Camera	Canon EOS 5D Mark II	Figure 14.7.14g
Elevation	122 m AOD	Principal distance	812.5 mm	Lens	EF50mm f/1.4 USM	Viewpoint 6 : Minor Road (south-east of Osclay) Photomontage
Direction of view	147°	Paper size	841 x 297 mm (half A1)	Camera height	1.5 m AGL	
Nearest turbine	28.42 km	Correct printed image size	820 x 260 mm	Date & time taken	24/12/2017 12:23	



© Crown copyright and database rights (2018) OS (license No 0100058708)

Distance to nearest turbine: 28.42km Camera: Canon EOS 5D Mark II Focal length: 75mm Camera height: 1.5m Date: 24/12/2017 Time: 12:23

This image should be viewed at a comfortable arm's length (approx. 500mm).

Figure 14.7.14h

Viewpoint 6 : Minor Road (south-east of Osclay) 75mm Single Frame Photomontage