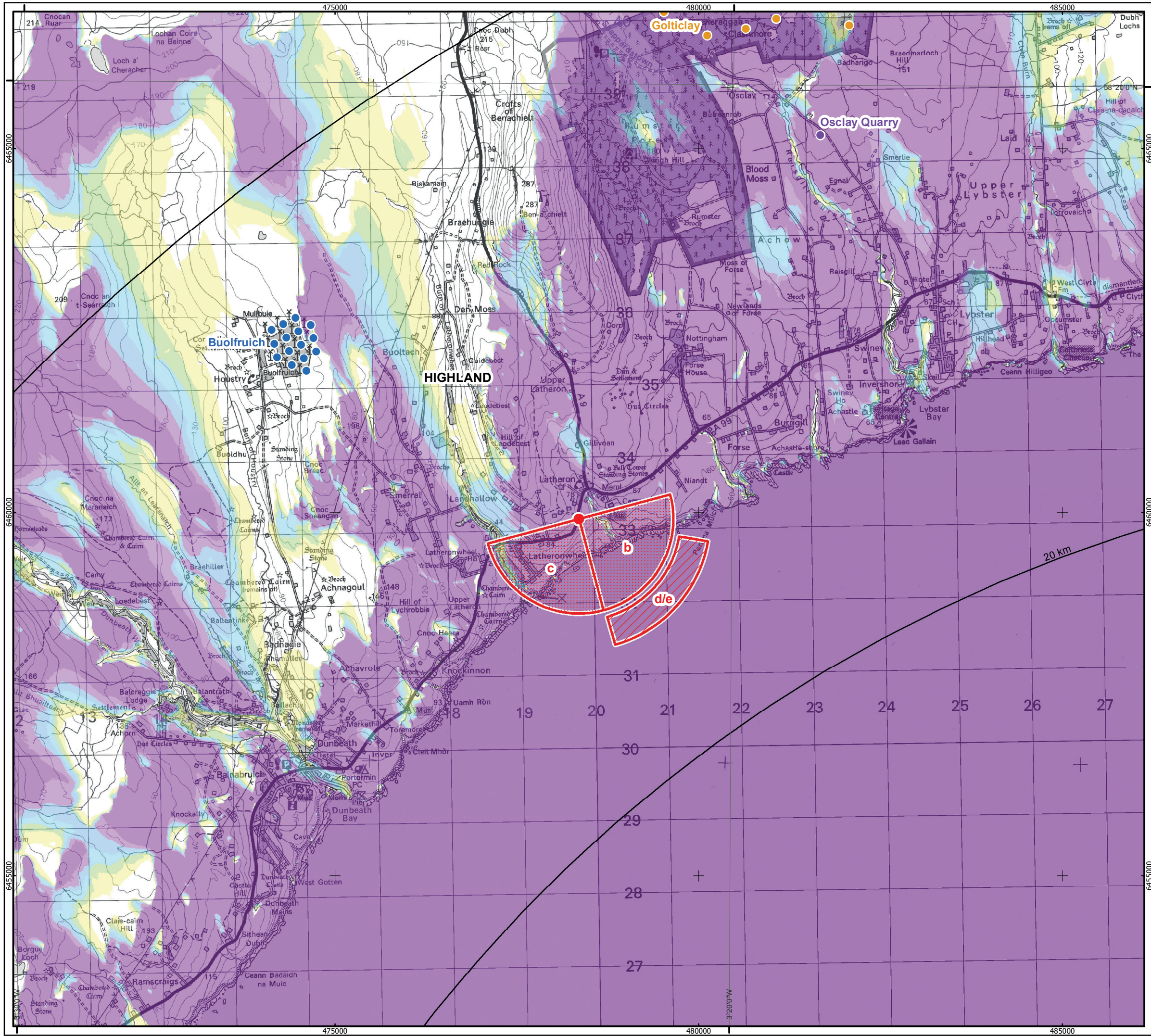


Grid Ref **319803 933152** Distance to nearest turbine **25.24km** AOD **79m**

FOV shown in included Highland Council 75mm Views

View from just inside stone enclosure, close to layby on A9 to south of Latheron



MORAY WEST OFFSHORE WINDFARM

KEY

50km Study Area Boundary

10km Distance Radii

Viewpoint Location

Views used from this location

Fields of View used in Panoramic Views

Field of View used in Photomontages

Cumulative Wind Farms

Operational / Under Construction

Consented

Application

Zone of Theoretical Visibility - No. of Turbines (285m) Visible*

1 - 10

11 - 20

21 - 30

31 - 40

41 - 50

51 - 62

Note:

* For Full ZTV parameters see Figure 14.7.1

Horizontal Scale: 1:50,000

0 1,000 2,000 Meters

Geodetic Parameters: WGS84 UTM Zone 30N

Produced: MJF

Reviewed: RC

Approved: FG

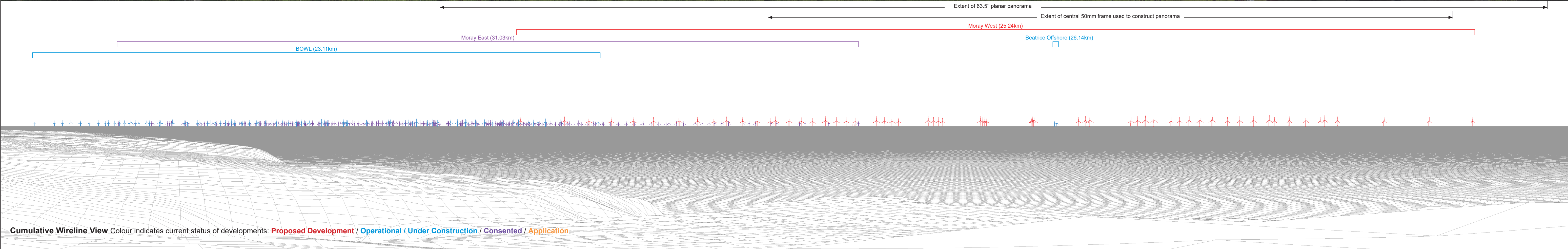
Date: 07/05/2018

Revision: D

REF: 8460005-PPW0180-GOE-MAP-157

Figure 14.7.16a Viewpoint 8
Latheron (A9) - Viewpoint Location

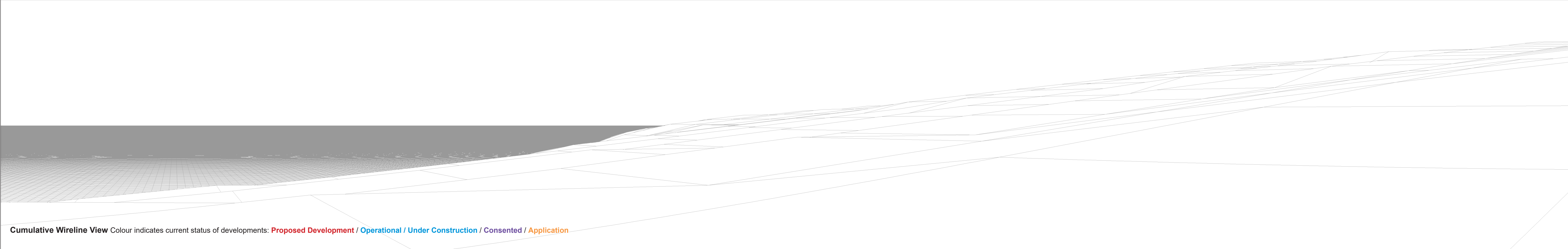
Moray Offshore
Windfarm (West) Ltd





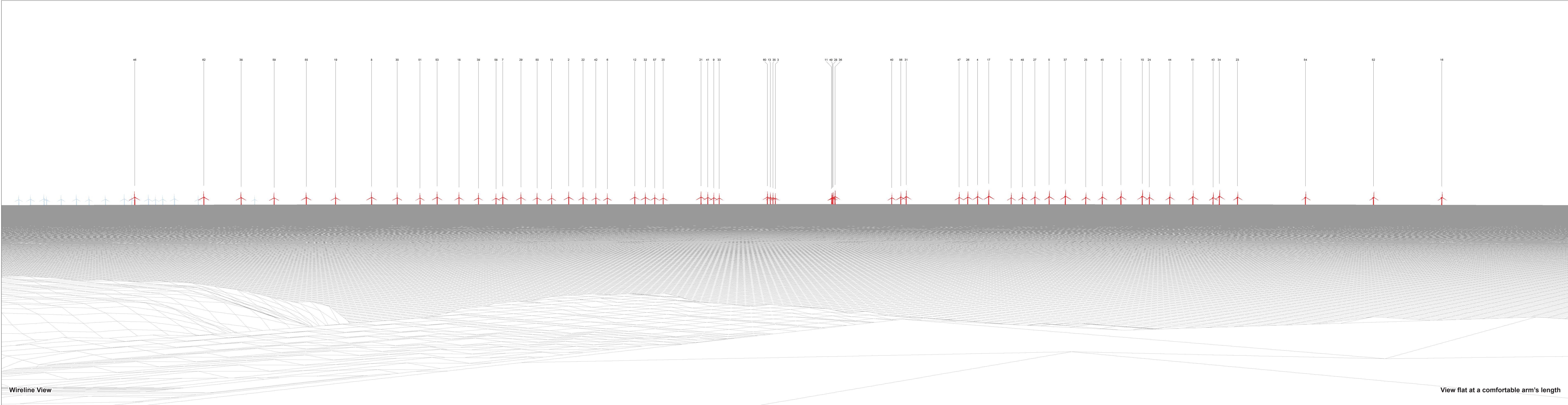
Baseline View

This image provides landscape and visual context only



Cumulative Wireline View Colour indicates current status of developments: Proposed Development / Operational / Under Construction / Consented / Application

04/09/2018 160959_VDA\160959_VDA_LWA_SNI_THC_COMB_REV.G



Wireline View

View flat at a comfortable arm's length

OS reference	319803 E 933152 N	Horizontal field of view	63.5° (planar projection)	Camera	Canon EOS 5D Mark II
Elevation	79 m AOD	Principal distance	812.5 mm	Lens	EF50mm f/1.4 USM
Direction of view	137°	Paper size	1027.7 x 297 mm	Camera height	1.5 m AGL
Nearest turbine	25.24 km	Correct printed image size	1006.7 x 260 mm	Date & time taken	04/09/2011 10:58

Figure 14.7.16d
Viewpoint 8 : Latheron (A9) Wireline (63.5° HFOV)
© Crown copyright and database rights 2017 Ordnance Survey 0100031673

04/06/2018 11:00:00 WDA 1160803 WDA LVIA SNH THC COMB REV G



Photomontage

View flat at a comfortable arm's length

OS reference	319803 E 933152 N	Horizontal field of view	63.5° (planar projection)	Camera	Canon EOS 5D Mark II
Elevation	79 m AOD	Principal distance	812.5 mm	Lens	EF50mm f/1.4 USM
Direction of view	137°	Paper size	1027.7 x 297 mm	Camera height	1.5 m AGL
Nearest turbine	25.24 km	Correct printed image size	1006.7 x 260 mm	Date & time taken	04/09/2011 10:58

Figure 14.7.16e
Viewpoint 8 : Latheron (A9) Photomontage (63.5° HFOV)



Distance to nearest turbine: 25.24km Camera: Canon EOS 5D Mark II Focal length: 75mm Camera height: 1.5m Date: 04/09/2011 Time: 10:58

This image should be viewed at a comfortable arm's length (approx. 500mm).

Figure 14.7.16f

Viewpoint 8 : Latheron (A9) 75mm Single Frame Photomontage