

502224 Limekilns Main St. SPS Outfall – Outline Method Statement

General

Materials stored within aBV Site Compound and not on beach

Access will be taken via route indicated on sketch below

Access taken on falling tide once tide has receded sufficiently

All plant used on beach to use biodegradable oils

Spill kits to be available adjacent to Works Area

Excavated materials to be set aside and re-used as backfill material around bases

Install Pre-cast Concrete Bases

Engineer mark out positions of bases and issue Permit to Dig

Identify number of bases to be installed based on tidal window available each day

Excavate to formation at each location

Place 100-150mm of concrete to bed pre-cast base

Bases placed in position to line/level

Backfill around bases with excavated material and compact

Pipe Installation

Pipes lifted from compound to beach using excavator and tracked dumper

Pipes set to correct line and level.

Pipe fixings secured – each pipe must be completely secured before the next pipe can be fitted to ensure no unsecured pipes are left on bases overnight.

Joints to be wrapped with appropriate wrapping

Tie-in to Existing

Once all new bases and pipes have been installed including Duck-bill Flap Valve, connection may be made to existing

Flow to be isolated at Outfall manhole using stopper – tanker available in event of high flows

Section of existing pipe to be removed

New connection pipe to be fitted

Remove stopper

Removal of Redundant Pipe and Bases

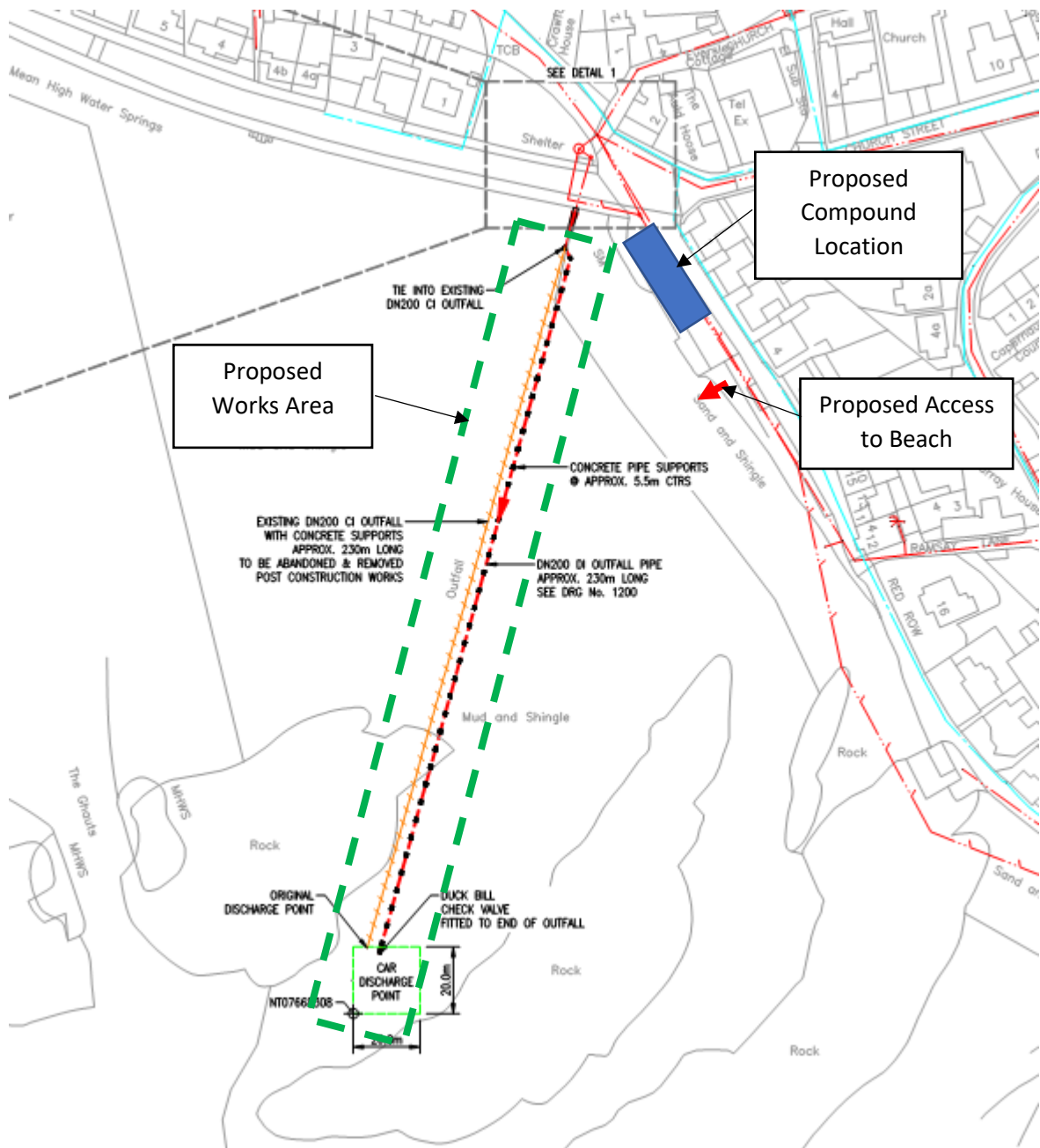
Cute holding down brackets and load pipe sections into tracked dumper.

Deposit pipe sections in Metal skip for disposal/recycling

Excavate around concrete sections to expose; lift sections into tracked dumper

Stockpile concrete sections in compound for disposal to recycling facility

502224 Limekilns Main St. SPS Outfall – Outline Method Statement



Redacted

502224 Limekilns Main St. SPS Outfall

Outline Method Statement Layout

Redacted