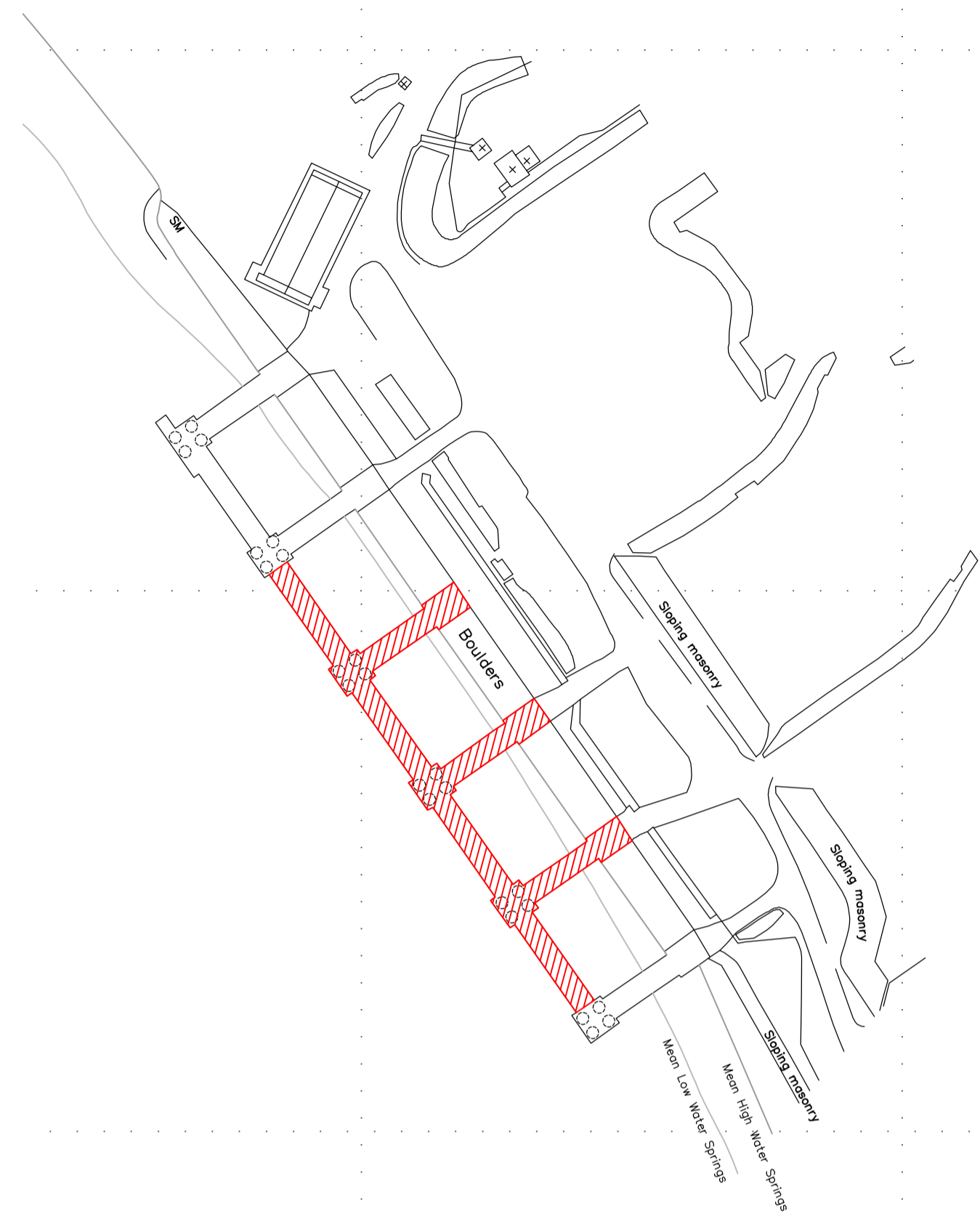
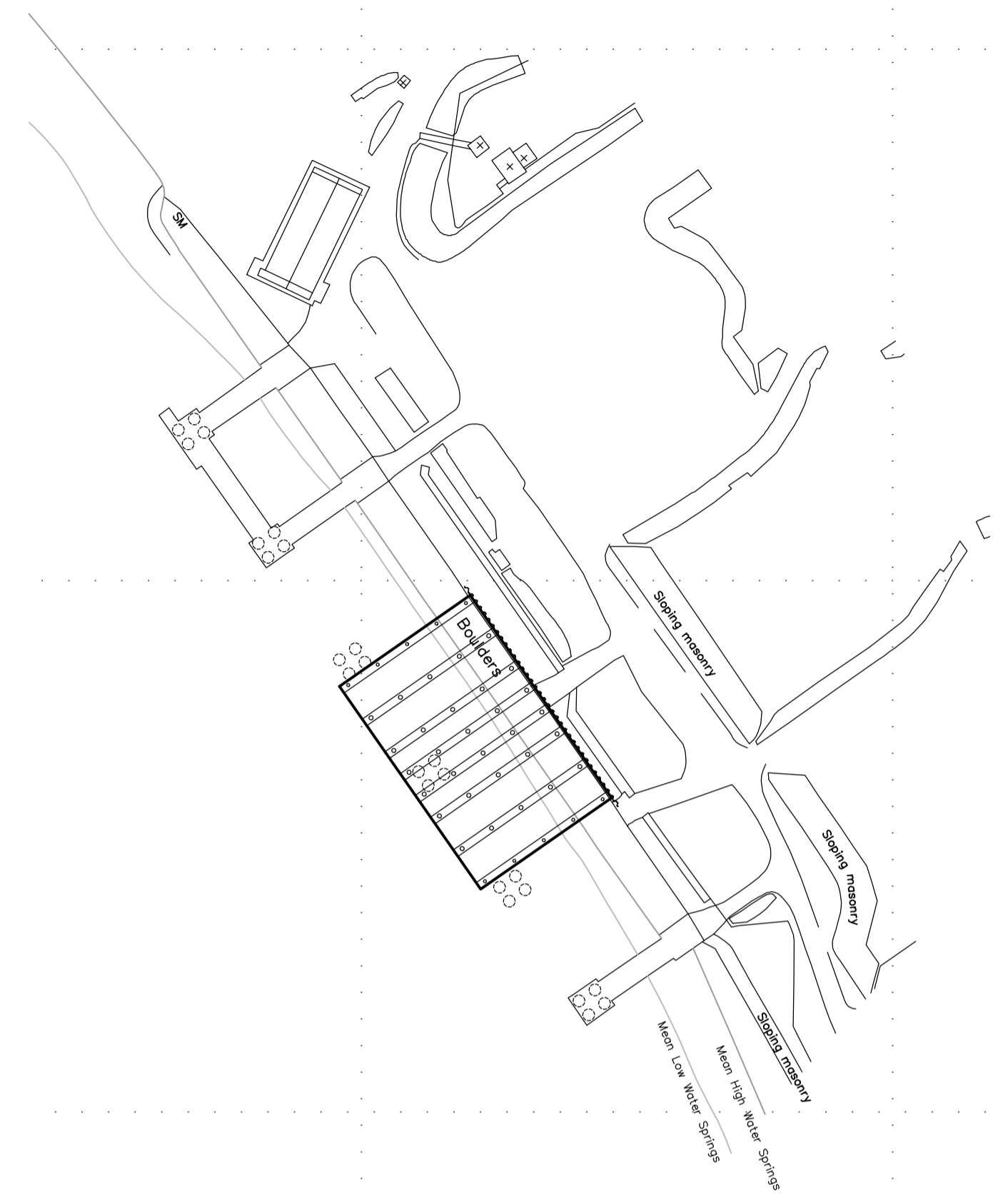


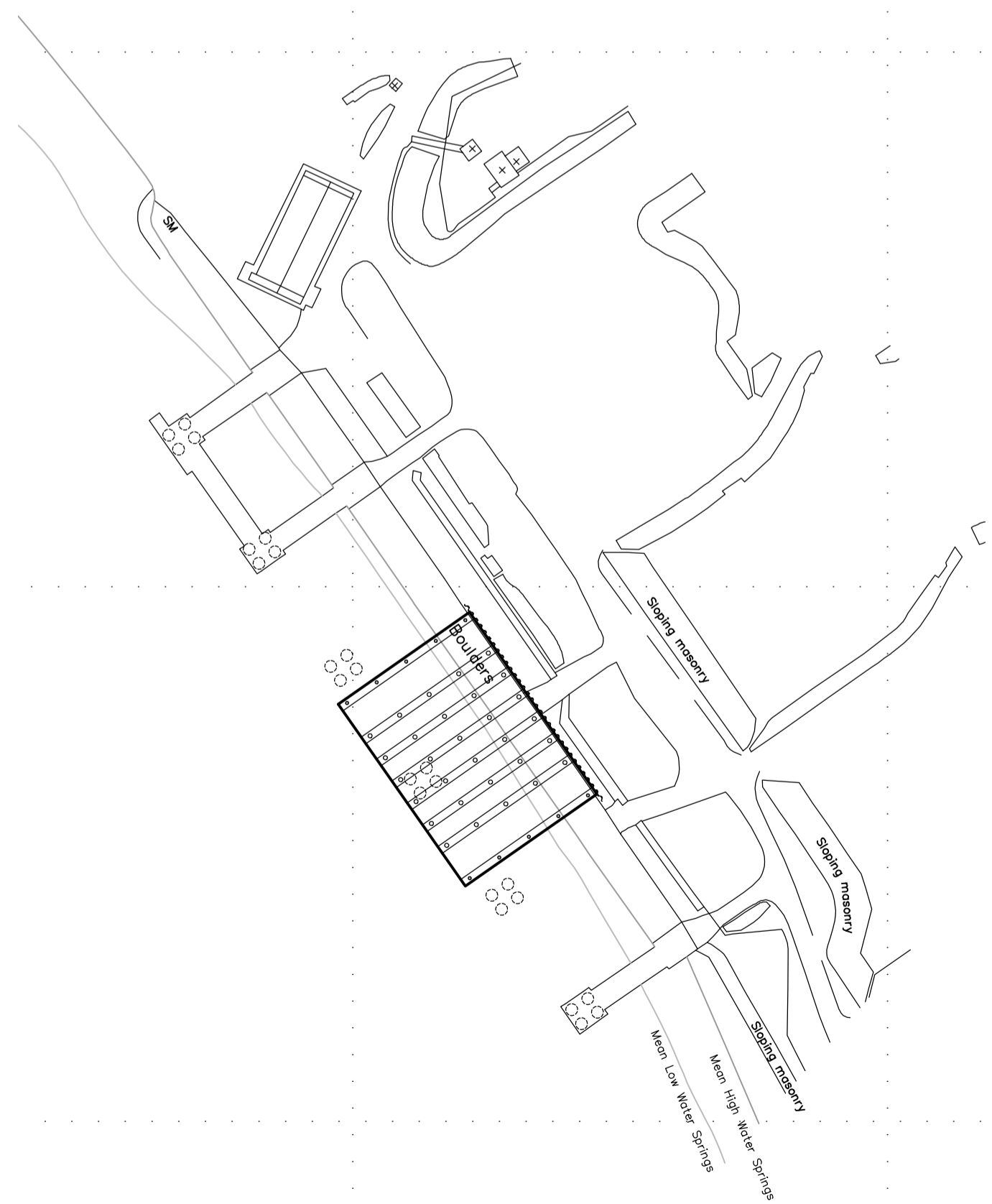
EXISTING LAYOUT
SCALE 1 : 1000



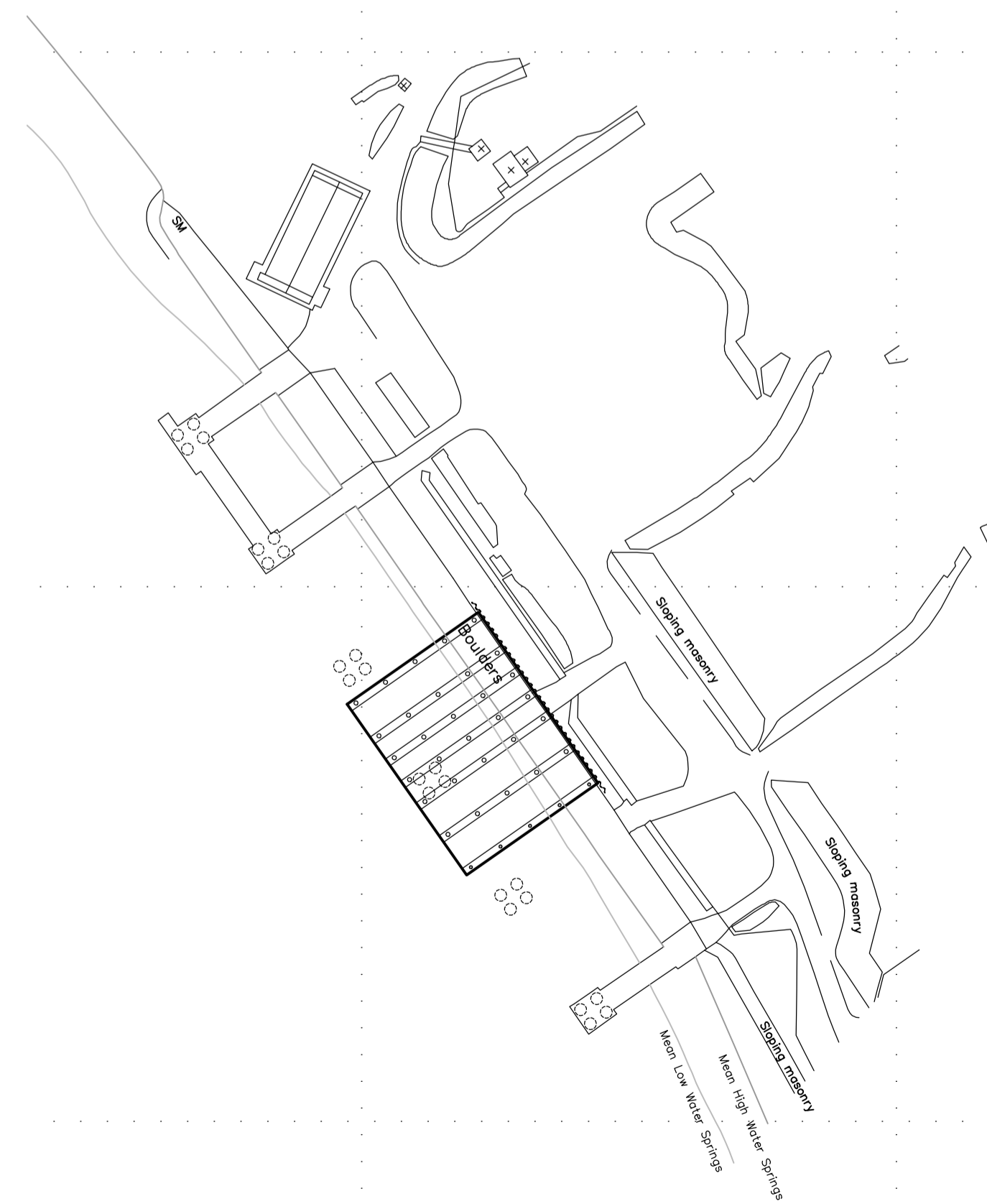
DEMOLITIONS PLAN
SCALE 1 : 1000



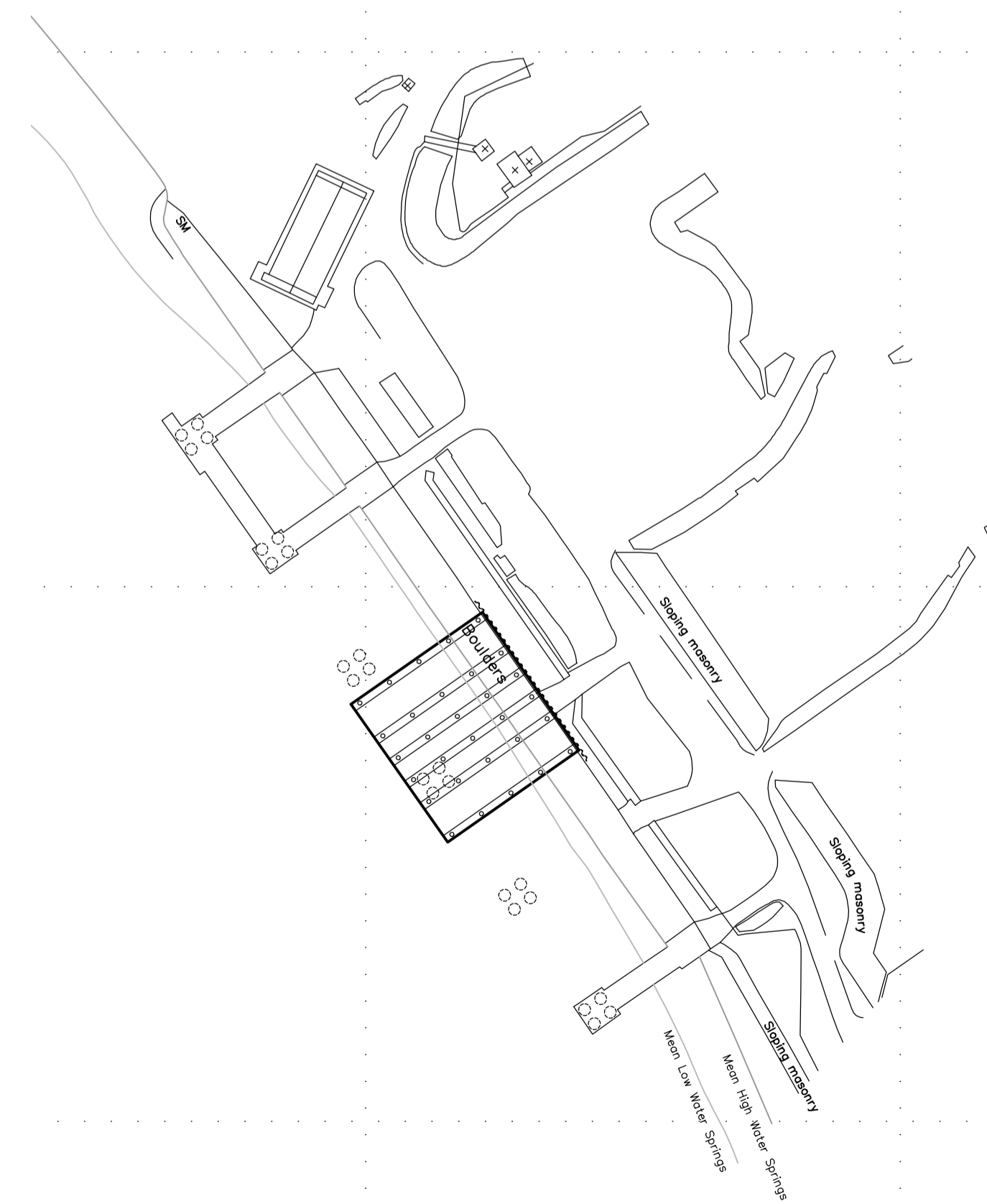
PROPOSED PLAN - OPTION 1
SCALE 1 : 1000



PROPOSED PLAN - OPTION 2
SCALE 1 : 1000



PROPOSED PLAN - OPTION 3
SCALE 1 : 1000



PROPOSED PLAN - OPTION 4
SCALE 1 : 1000

A	01.02.19	DRAWING REVISED TO REFLECT CLIENT COMMENTS	W.J.	J.McL.
REV	DATE	REVISION DESCRIPTION	DRN	VER

THIS DRAWING IS COPYRIGHT © DO NOT SCALE FROM THIS DRAWING.



Civil Engineers
Structural Engineers
Principal Designers
Architects
Geotechnical services
Environmental services

142 St. Vincent Street, Glasgow G2 5LA.
Tel : 0141 227 3060 - Fax : 0141 248 9542
www.arch-henderson.co.uk - email : glasgow@arch-henderson.co.uk

Offices in : Aberdeen, Dundee, Falkland Islands, Glasgow, Inverness, Lerwick, Southampton, Stromness and Thurso

PROJECT :
**MALIN GROUP PROPERTIES LIMITED
CARLESS SUSPENDED DECK OPTION STUDY**

TITLE :
**EXISTING, DEMOLITIONS AND
PROPOSED LAYOUTS**

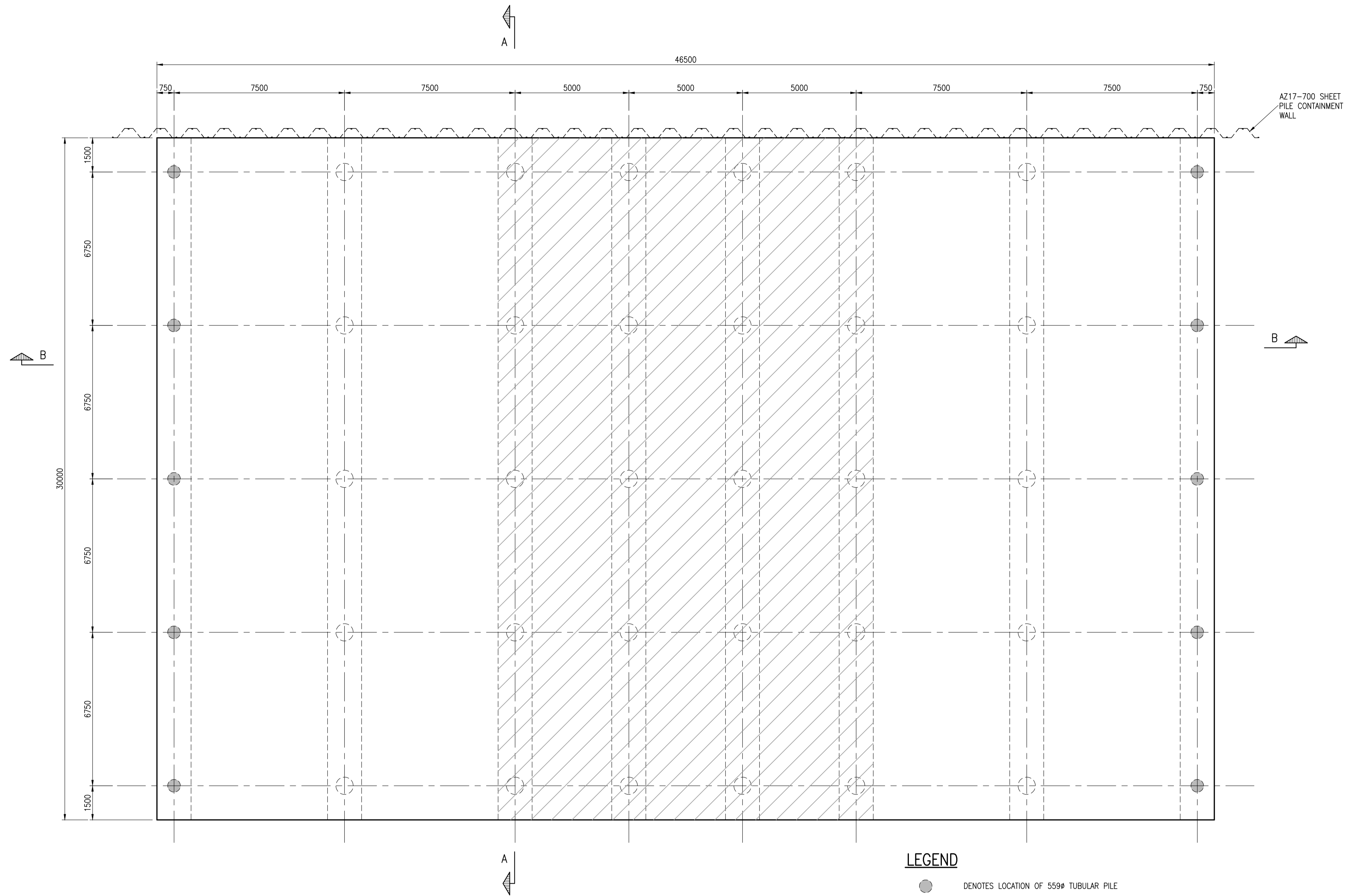
DRAWN : W.J.	DATE : 20.12.18	VERIFIED : J.McL.	APPROVED : G.B.
-----------------	--------------------	----------------------	--------------------

SCALE : (A1)
1 : 1000
DRAWING STATUS :
PRELIMINARY

DO NOT SCALE	DRAWING No : 185057/001	REV : A
--------------	----------------------------	------------




NOTES

1. THE FOLLOWING DESIGN ASSUMPTIONS HAVE BEEN MADE
 ROCK LEVEL = -35m C.D.
 LENGTH OF JETTY = 46.5m
 WIDTH OF JETTY = 30m
 COPE/DECK LEVEL = +6.2m C.D.
 DESIGN DREDGE LEVEL = -7.5m C.D.
2. THE JETTY IS DESIGNED FOR THE FOLLOWING LOADINGS:
 GENERAL TRAFFIC AREAS - 7.5T/m²
 HEAVY LIFT AREA - 15T/m²
3. THE JETTY HAS BEEN DESIGNED FOR A HORIZONTAL LOAD OF 50T IN ANY DIRECTION.
4. THE JETTY HAS BEEN DESIGNED TO HAVE A DESIGN LIFE OF 50 YEARS.



DECK PLAN
SCALE 1 : 100

LEGEND

-  DENOTES LOCATION OF 559Ø TUBULAR PILE
-  DENOTES LOCATION OF 762Ø TUBULAR PILE
-  DENOTES EXTENT OF HEAVY LIFT AREA

REV	DATE	REVISION DESCRIPTION	DRN	VER
THIS DRAWING IS COPYRIGHT © DO NOT SCALE FROM THIS DRAWING.				

Arch Henderson
1919

Civil Engineers
Structural Engineers
Principal Designers
Architects
Geotechnical services
Environmental services

142 St. Vincent Street, Glasgow G2 5LA.
Tel : 0141 227 3060 - Fax : 0141 248 9542
www.arch-henderson.co.uk - email : glasgow@arch-henderson.co.uk

Offices in : Aberdeen, Dundee, Falkland Islands, Glasgow, Inverness, Lerwick, Southampton, Stranraer and Thurso

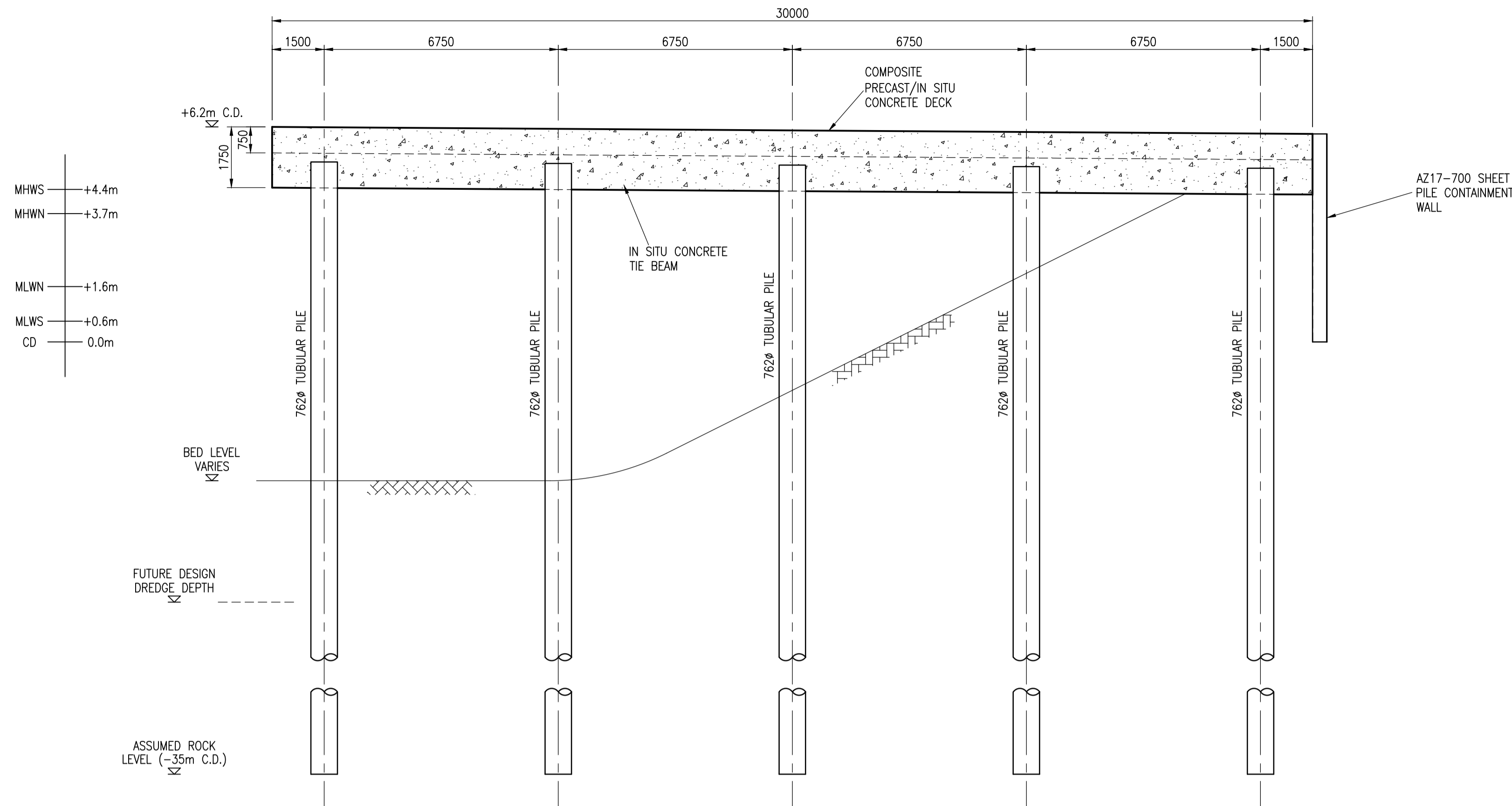
PROJECT :
**MALIN GROUP PROPERTIES LIMITED
CARLESS SUSPENDED DECK OPTION STUDY**

TITLE :
**OPTION 1
GENERAL ARRANGEMENT**

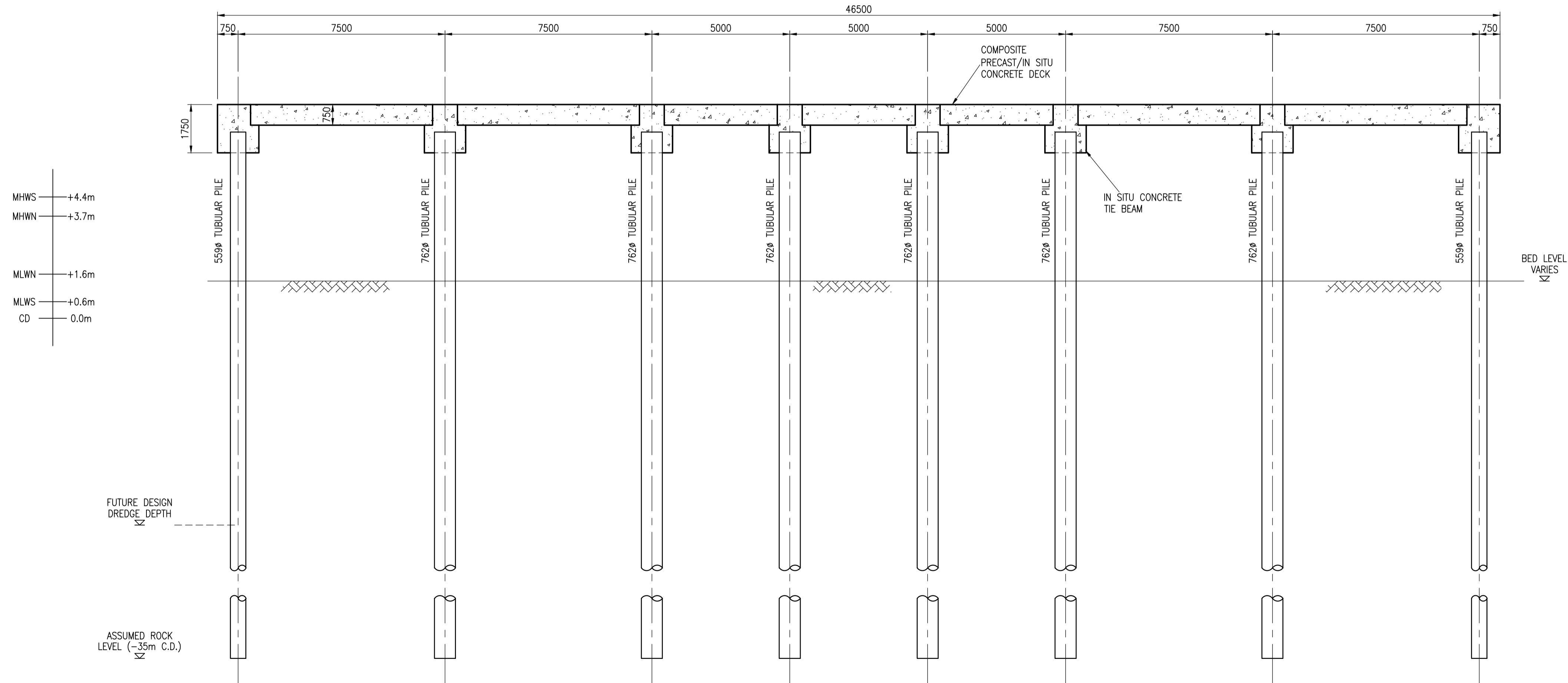
DRAWN : W.J.	DATE : 20.12.18	VERIFIED : J.McL.	APPROVED : G.B.
-----------------	--------------------	----------------------	--------------------

SCALE : (A1) AS SHOWN	DRAWING STATUS : PRELIMINARY
--------------------------	---------------------------------

DRAWING No : 185057/002	REV : /
----------------------------	------------



SECTION A-A
SCALE 1 : 100



SECTION B-B
SCALE 1 : 100

REV	DATE	REVISION DESCRIPTION	DRN	VER
THIS DRAWING IS COPYRIGHT © DO NOT SCALE FROM THIS DRAWING.				



Civil Engineers
Structural Engineers
Principal Designers
Architects
Geotechnical services
Environmental services

142 St. Vincent Street, Glasgow G2 5LA.
Tel : 0141 227 3060 - Fax : 0141 248 9542
www.arch-henderson.co.uk - email : glasgow@arch-henderson.co.uk

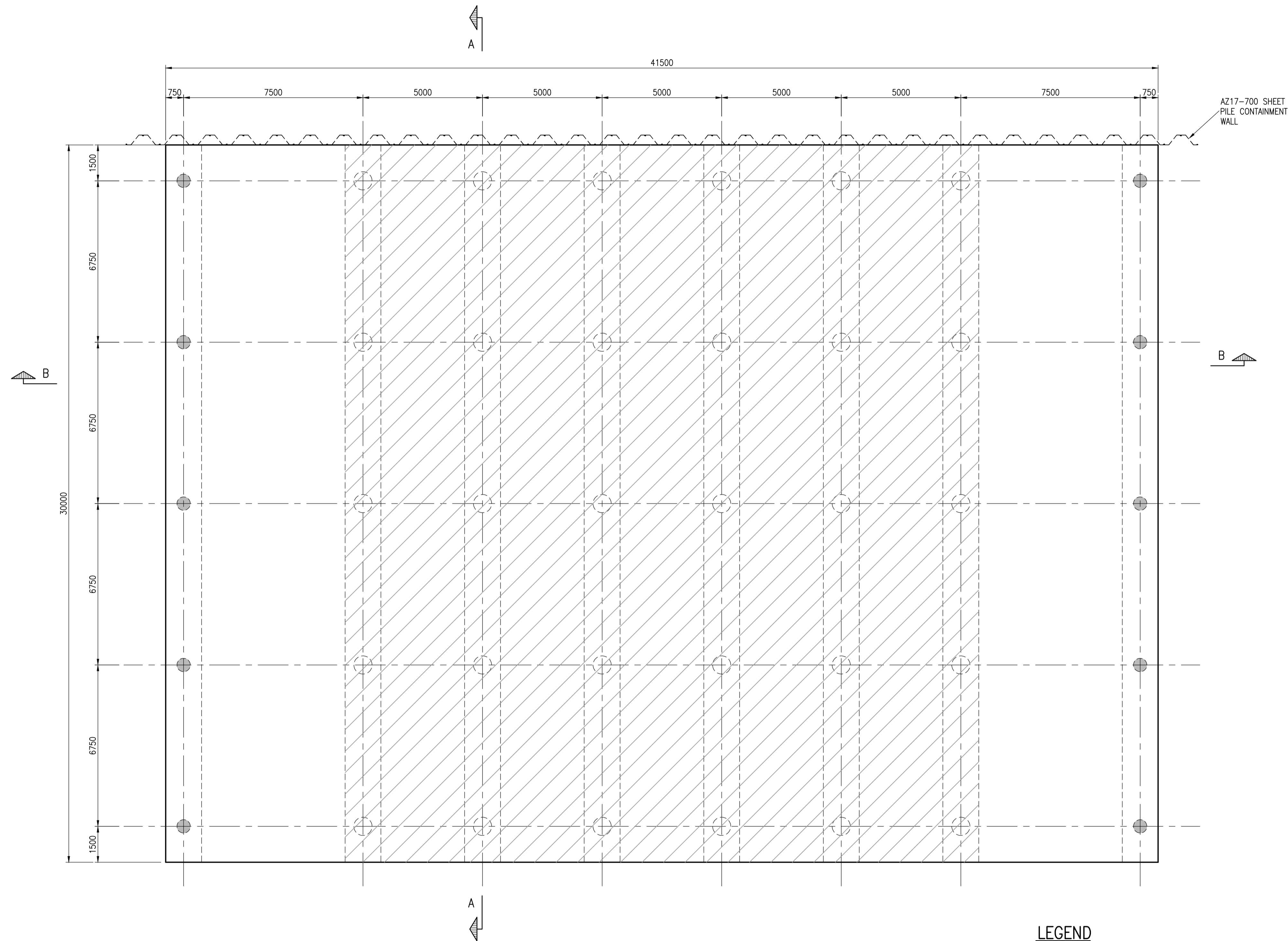
Offices in : Aberdeen, Dundee, Falkland Islands, Glasgow, Inverness, Lerwick, Southampton, Stranraer and Thurso

PROJECT :
**MALIN GROUP PROPERTIES LIMITED
CARLESS SUSPENDED DECK OPTION STUDY**

TITLE :
**OPTION 1
TYPICAL SECTIONS**

DRAWN : W.J.	DATE : 20.12.18	VERIFIED : J.McL.	APPROVED : G.B.
SCALE : (A1) AS SHOWN		DRAWING STATUS : PRELIMINARY	

DRAWING No : 185057/003	REV : /
----------------------------	------------



DECK PLAN
SCALE 1 : 100

LEGEND

- DENOTES LOCATION OF 559 ϕ TUBULAR PILE
- ⊗ DENOTES LOCATION OF 762 ϕ TUBULAR PILE
- DENOTES EXTENT OF HEAVY LIFT AREA

NOTES

1. THE FOLLOWING DESIGN ASSUMPTIONS HAVE BEEN MADE
ROCK LEVEL = -35m C.D.
LENGTH OF JETTY = 41.5m
WIDTH OF JETTY = 30m
COPE/DECK LEVEL = +6.2m C.D.
DESIGN DREDGE LEVEL = -7.5m C.D.
2. THE JETTY IS DESIGNED FOR THE FOLLOWING LOADINGS:
GENERAL TRAFFIC AREAS = 7.5T/m²
HEAVY LIFT AREA = 15T/m²
3. THE JETTY HAS BEEN DESIGNED FOR A HORIZONTAL LOAD OF 50T IN ANY DIRECTION.
4. THE JETTY HAS BEEN DESIGNED TO HAVE A DESIGN LIFE OF 50 YEARS.

REV	DATE	REVISION DESCRIPTION	DRN	VER
THIS DRAWING IS COPYRIGHT © DO NOT SCALE FROM THIS DRAWING.				

Arch Henderson
1919

142 St. Vincent Street, Glasgow G2 5LA.
Tel : 0141 227 3060 - Fax : 0141 248 9542
www.arch-henderson.co.uk - email : glasgow@arch-henderson.co.uk

Offices in : Aberdeen, Dundee, Falkland Islands, Glasgow, Inverness, Lerwick, Southampton, Stranraer and Thurso

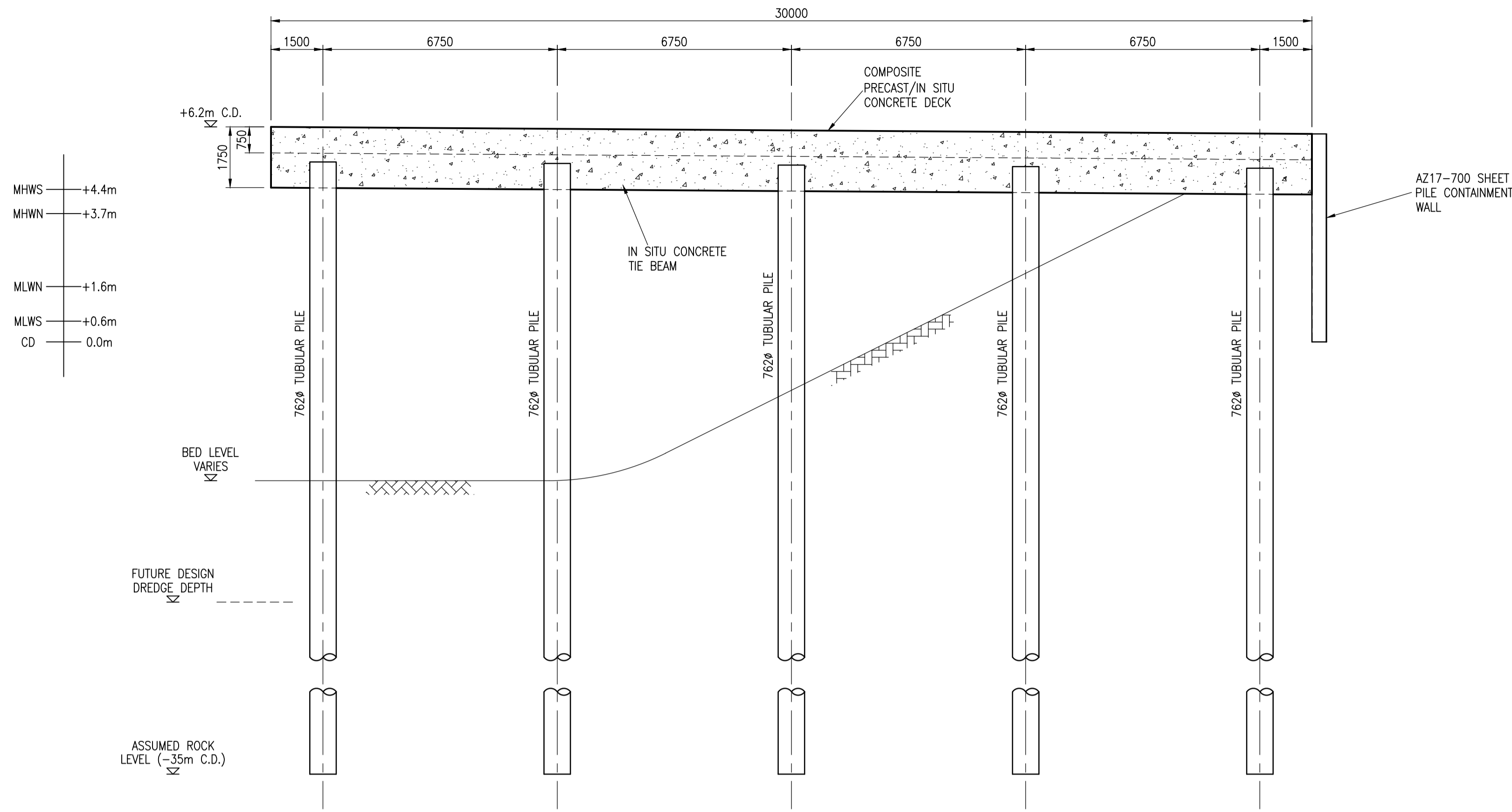
Civil Engineers
Structural Engineers
Principal Designers
Architects
Geotechnical services
Environmental services

PROJECT :
**MALIN GROUP PROPERTIES LIMITED
CARLESS SUSPENDED DECK OPTION STUDY**

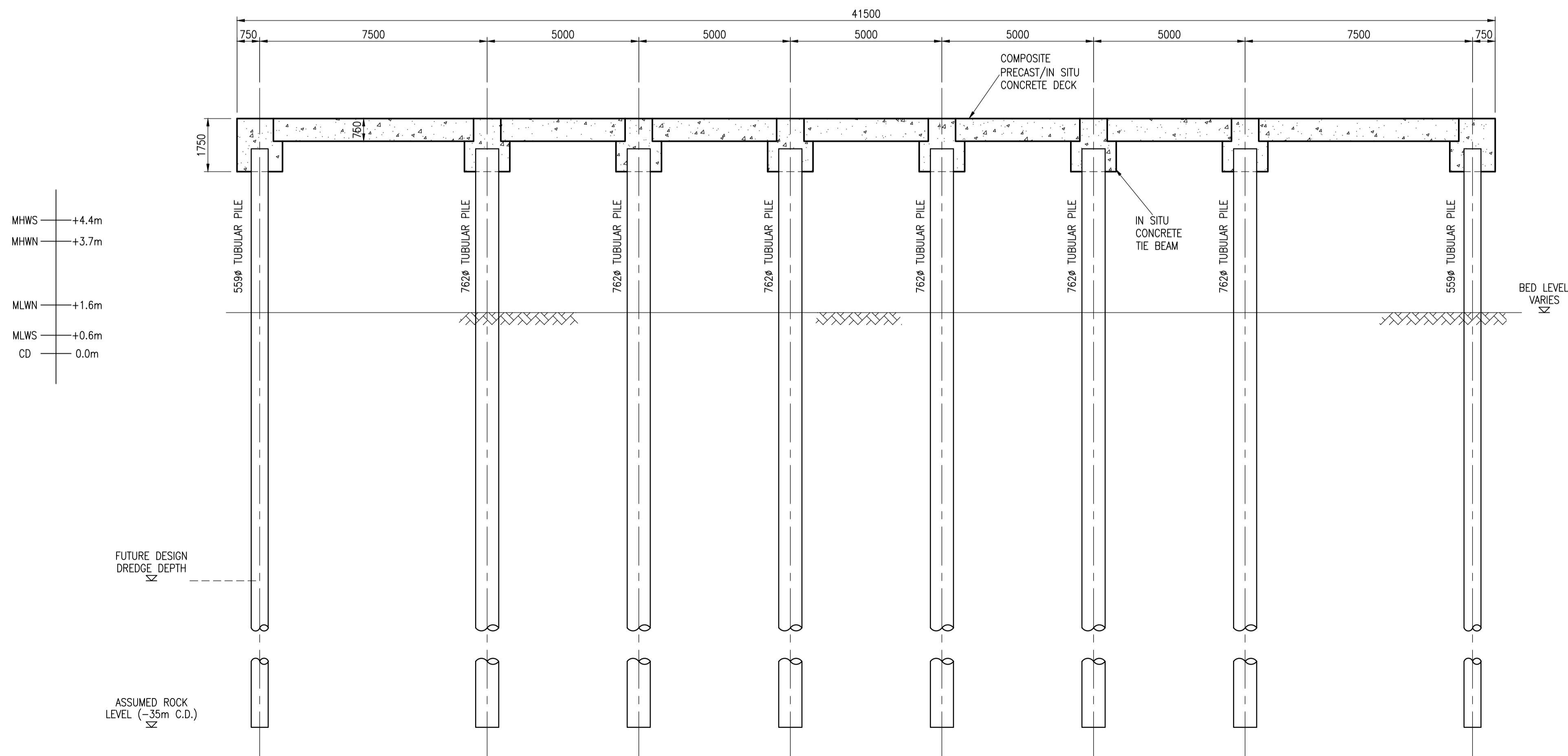
TITLE :
**OPTION 2
GENERAL ARRANGEMENT**

DRAWN : W.J.	DATE : 20.12.18	VERIFIED : J.McL.	APPROVED : G.B.
SCALE : (A1) AS SHOWN		DRAWING STATUS : PRELIMINARY	

DRAWING No : 185057/004	REV : /
-----------------------------------	------------



SECTION A-A
SCALE 1 : 100



SECTION B-B
SCALE 1 : 100

REV	DATE	REVISION DESCRIPTION	DRN	VER
THIS DRAWING IS COPYRIGHT © DO NOT SCALE FROM THIS DRAWING.				

Arch Henderson
1919

Civil Engineers
Structural Engineers
Principal Designers
Architects
Geotechnical services
Environmental services

142 St. Vincent Street, Glasgow G2 5LA.
Tel : 0141 227 3060 - Fax : 0141 248 9542
www.arch-henderson.co.uk - email : glasgow@arch-henderson.co.uk

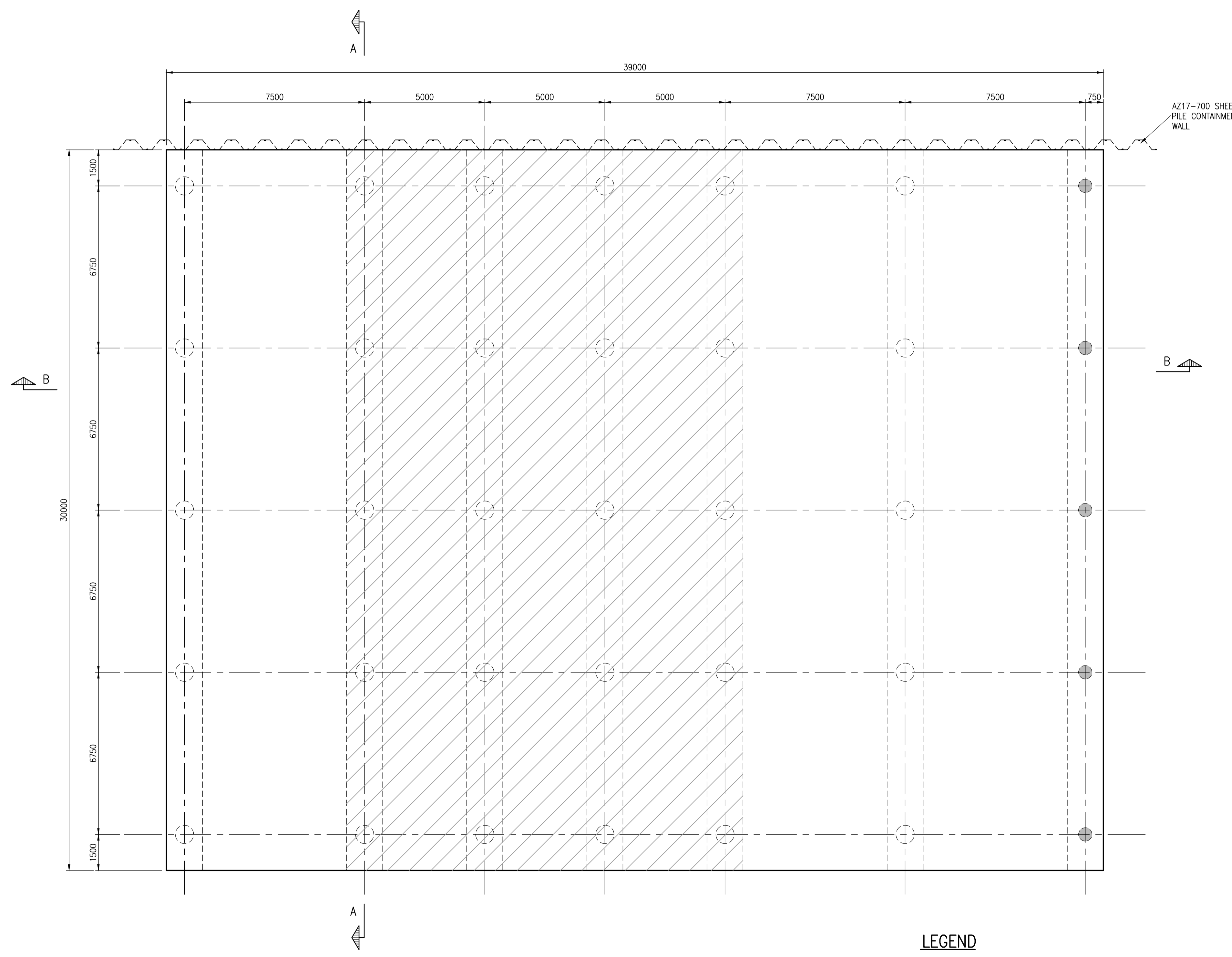
Offices in : Aberdeen, Dundee, Falkland Islands, Glasgow, Inverness, Lerwick, Southampton, Stranraer and Thurso

PROJECT :
**MALIN GROUP PROPERTIES LIMITED
CARLESS SUSPENDED DECK OPTION STUDY**

TITLE :
**OPTION 2
TYPICAL SECTIONS**

DRAWN : W.J.	DATE : 20.12.18	VERIFIED : J.McL.	APPROVED : G.B.
SCALE : (A1) AS SHOWN		DRAWING STATUS : PRELIMINARY	

DO NOT SCALE DRAWING No : **185057/005** REV : /



DECK PLAN
SCALE 1 : 100

- LEGEND**
- DENOTES LOCATION OF 559# TUBULAR PILE
 - DENOTES LOCATION OF 762# TUBULAR PILE
 - ▨ DENOTES EXTENT OF HEAVY LIFT AREA

- NOTES**
- THE FOLLOWING DESIGN ASSUMPTIONS HAVE BEEN MADE
ROCK LEVEL = -35m C.D.
LENGTH OF JETTY = 39m
WIDTH OF JETTY = 30m
COPE/DECK LEVEL = +6.2m C.D.
DESIGN DREDGE LEVEL = -7.5m C.D.
 - THE JETTY IS DESIGNED FOR THE FOLLOWING LOADINGS:
GENERAL TRAFFIC AREAS - 7.5T/m²
HEAVY LIFT AREA - 15T/m²
 - THE JETTY HAS BEEN DESIGNED FOR A HORIZONTAL LOAD OF 50T IN ANY DIRECTION.
 - THE JETTY HAS BEEN DESIGNED TO HAVE A DESIGN LIFE OF 50 YEARS.

REV	DATE	REVISION DESCRIPTION	DRN	VER
THIS DRAWING IS COPYRIGHT © DO NOT SCALE FROM THIS DRAWING.				

Arch Henderson
1919

Civil Engineers
Structural Engineers
Principal Designers
Architects
Geotechnical services
Environmental services

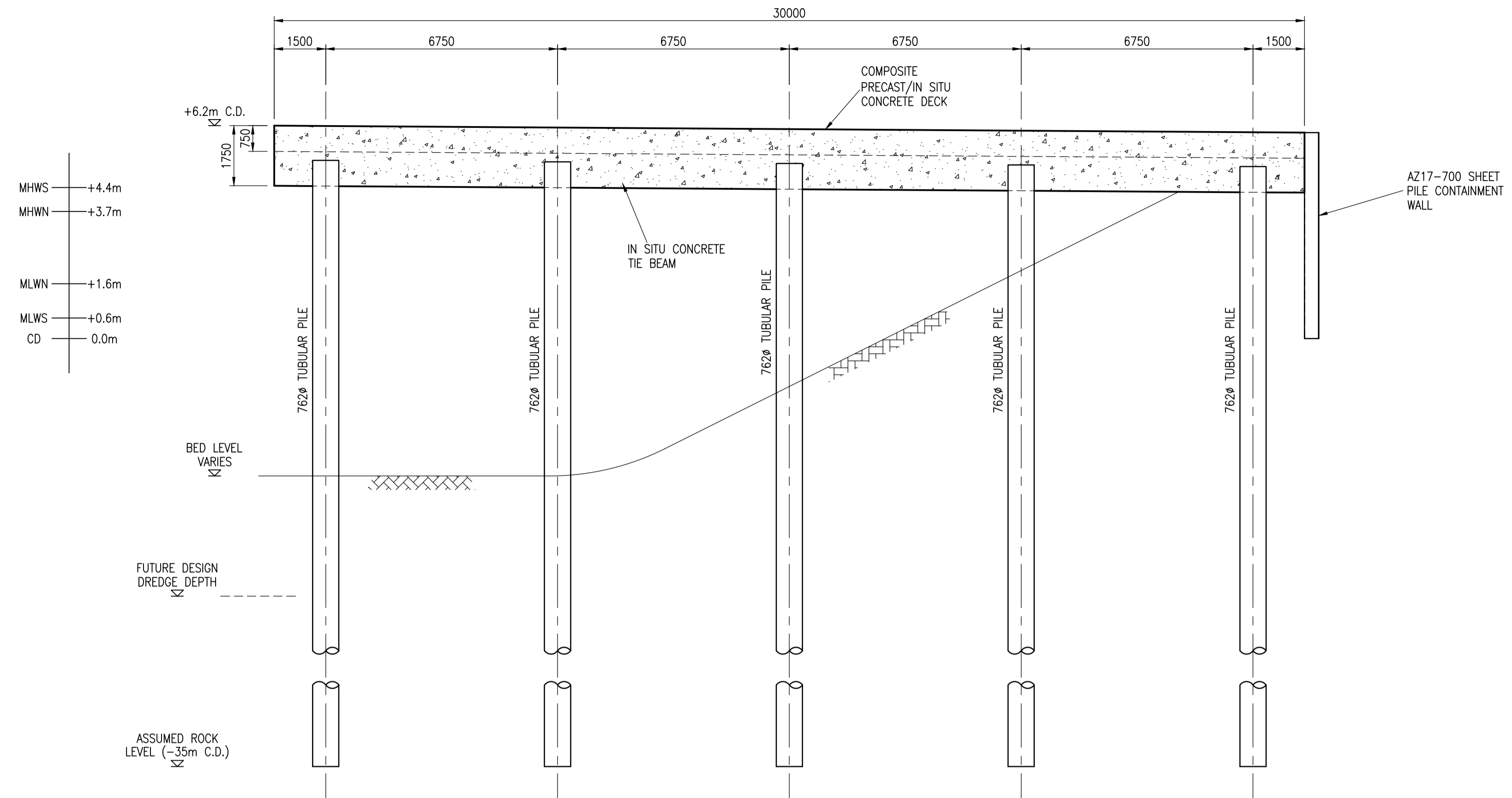
142 St. Vincent Street, Glasgow G2 5LA.
Tel : 0141 227 3060 - Fax : 0141 248 9542
www.arch-henderson.co.uk - email : glasgow@arch-henderson.co.uk

Offices in : Aberdeen, Dundee, Falkland Islands, Glasgow, Inverness, Lerwick, Southampton, Stranraer and Thurso

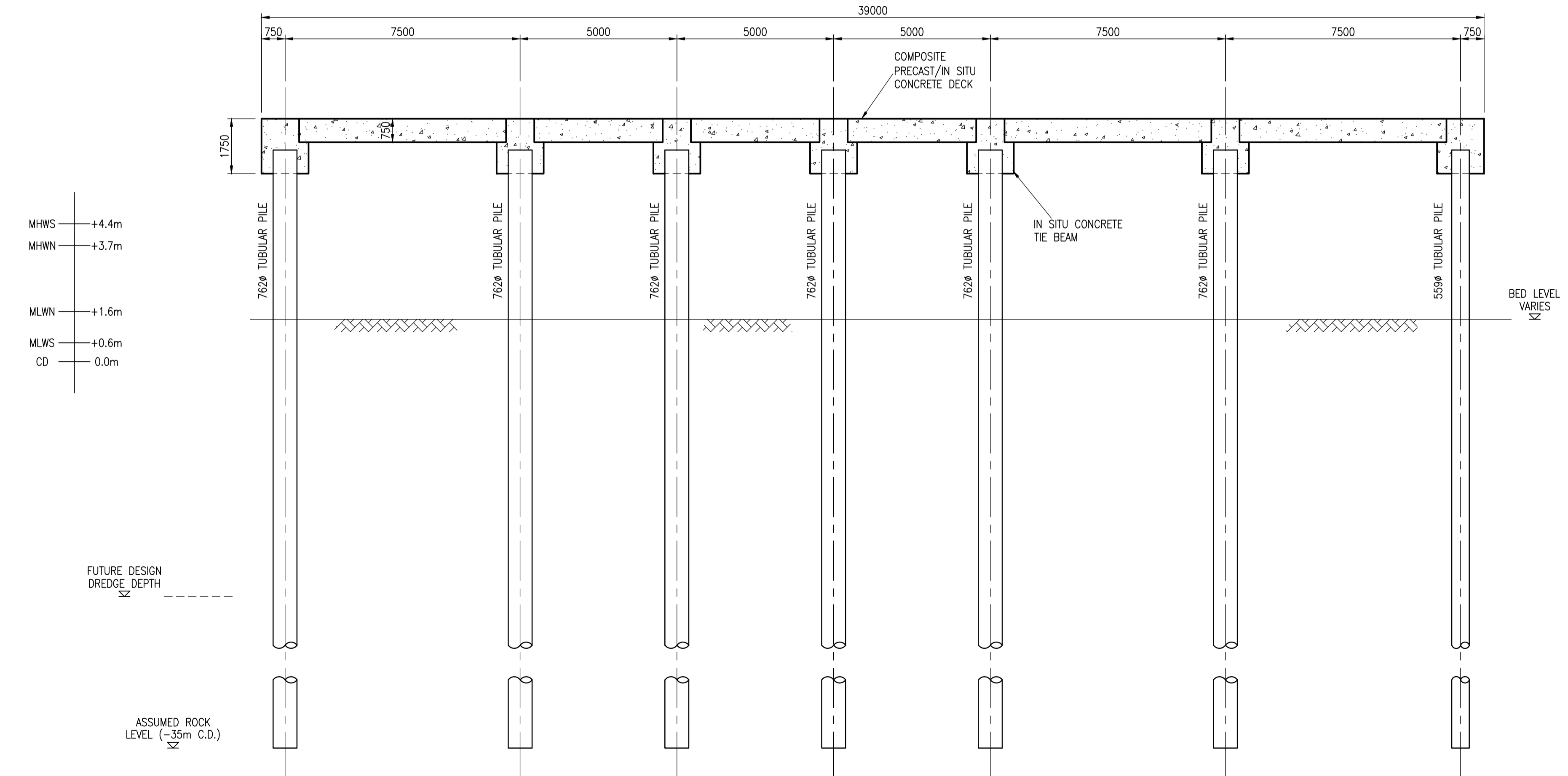
PROJECT :
**MALIN GROUP PROPERTIES LIMITED
CARLESS SUSPENDED DECK OPTION STUDY**

TITLE :
**OPTION 3
GENERAL ARRANGEMENT**

DRAWN : W.J.	DATE : 20.12.18	VERIFIED : J.McL.	APPROVED : G.B.
SCALE : (A1) AS SHOWN		DRAWING STATUS : PRELIMINARY	
DRAWING No : 185057/006			REV : /



SECTION A-A
SCALE 1 : 100



SECTION B-B
SCALE 1 : 100

REV	DATE	REVISION DESCRIPTION	DRN	VER
THIS DRAWING IS COPYRIGHT © DO NOT SCALE FROM THIS DRAWING.				

Arch Henderson
1919

Civil Engineers
Structural Engineers
Principal Designers
Architects
Geotechnical services
Environmental services

142 St. Vincent Street, Glasgow G2 5LA.
Tel : 0141 227 3060 - Fax : 0141 248 9542
www.arch-henderson.co.uk - email : glasgow@arch-henderson.co.uk

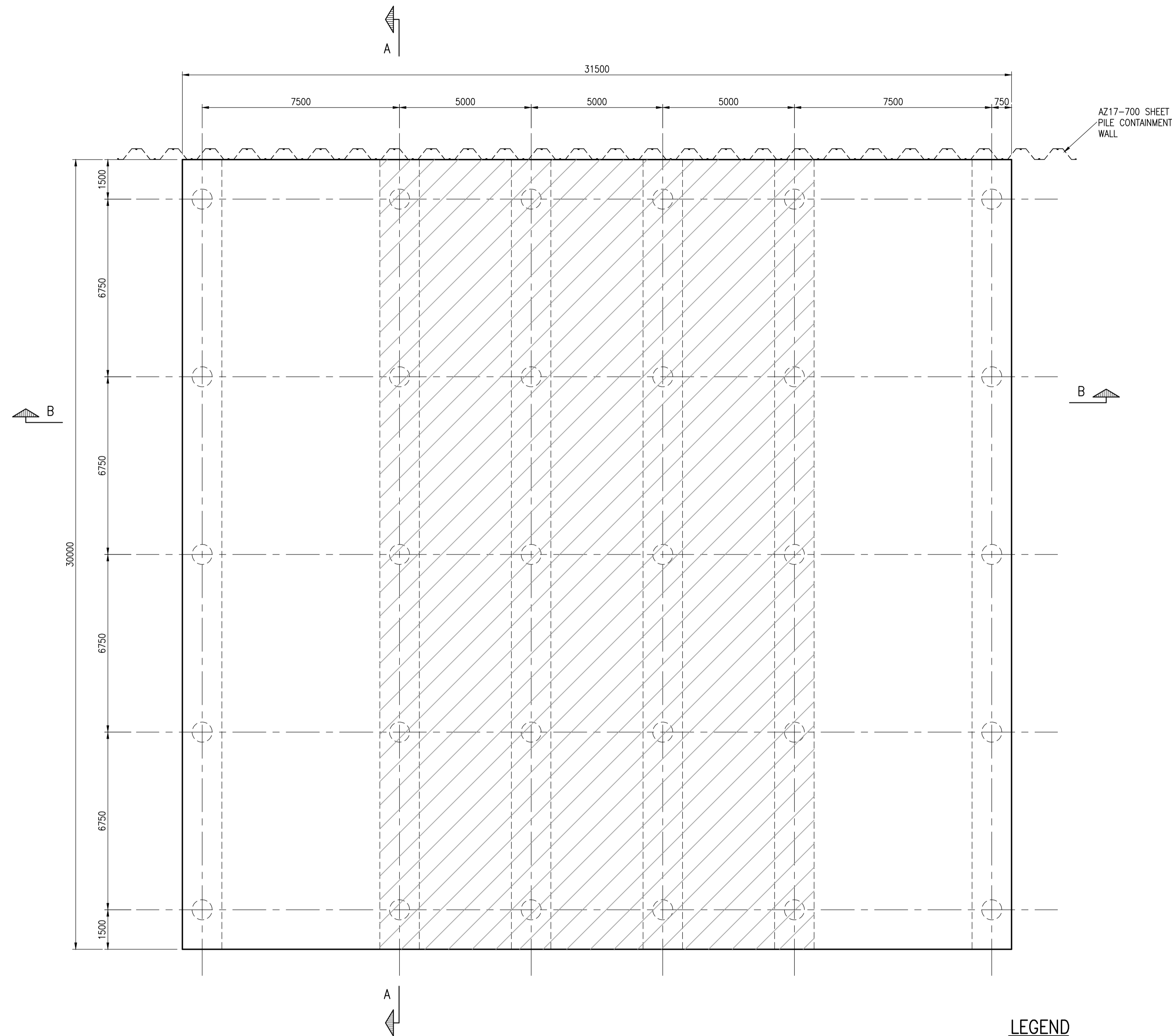
Offices in : Aberdeen, Dundee, Falkland Islands, Glasgow, Inverness, Lerwick, Southampton, Stranraer and Thurso

PROJECT :
**MALIN GROUP PROPERTIES LIMITED
CARLESS SUSPENDED DECK OPTION STUDY**

TITLE :
**OPTION 3
TYPICAL SECTIONS**



DRAWN : W.J.	DATE : 20.12.18	VERIFIED : J.McL.	APPROVED : G.B.
SCALE : (A1) AS SHOWN		DRAWING STATUS : PRELIMINARY	

DO NOT SCALE	DRAWING No : 185057/007	REV : /
--------------	-----------------------------------	------------



DECK PLAN
SCALE 1 : 100

LEGEND

-  DENOTES LOCATION OF 762Ø TUBULAR PILE
-  DENOTES EXTENT OF HEAVY LIFT AREA

NOTES

1. THE FOLLOWING DESIGN ASSUMPTIONS HAVE BEEN MADE
ROCK LEVEL = -35m C.D.
LENGTH OF JETTY = 31.5m
WIDTH OF JETTY = 30m
COPE/DECK LEVEL = +6.2m C.D.
DESIGN DREDGE LEVEL = -7.5m C.D.
2. THE JETTY IS DESIGNED FOR THE FOLLOWING LOADINGS:
GENERAL TRAFFIC AREAS - 7.5T/m²
HEAVY LIFT AREA - 15T/m²
3. THE JETTY HAS BEEN DESIGNED FOR A HORIZONTAL LOAD OF 50T IN ANY DIRECTION.
4. THE JETTY HAS BEEN DESIGNED TO HAVE A DESIGN LIFE OF 50 YEARS.

REV	DATE	REVISION DESCRIPTION	DRN	VER
-----	------	----------------------	-----	-----

THIS DRAWING IS COPYRIGHT © DO NOT SCALE FROM THIS DRAWING.



Civil Engineers
Structural Engineers
Principal Designers
Architects
Geotechnical services
Environmental services

142 St. Vincent Street, Glasgow G2 5LA.
Tel : 0141 227 3060 - Fax : 0141 248 9542
www.arch-henderson.co.uk - email : glasgow@arch-henderson.co.uk

Offices in : Aberdeen, Dundee, Falkland Islands, Glasgow, Inverness, Lerwick, Southampton, Stranraer and Thurso

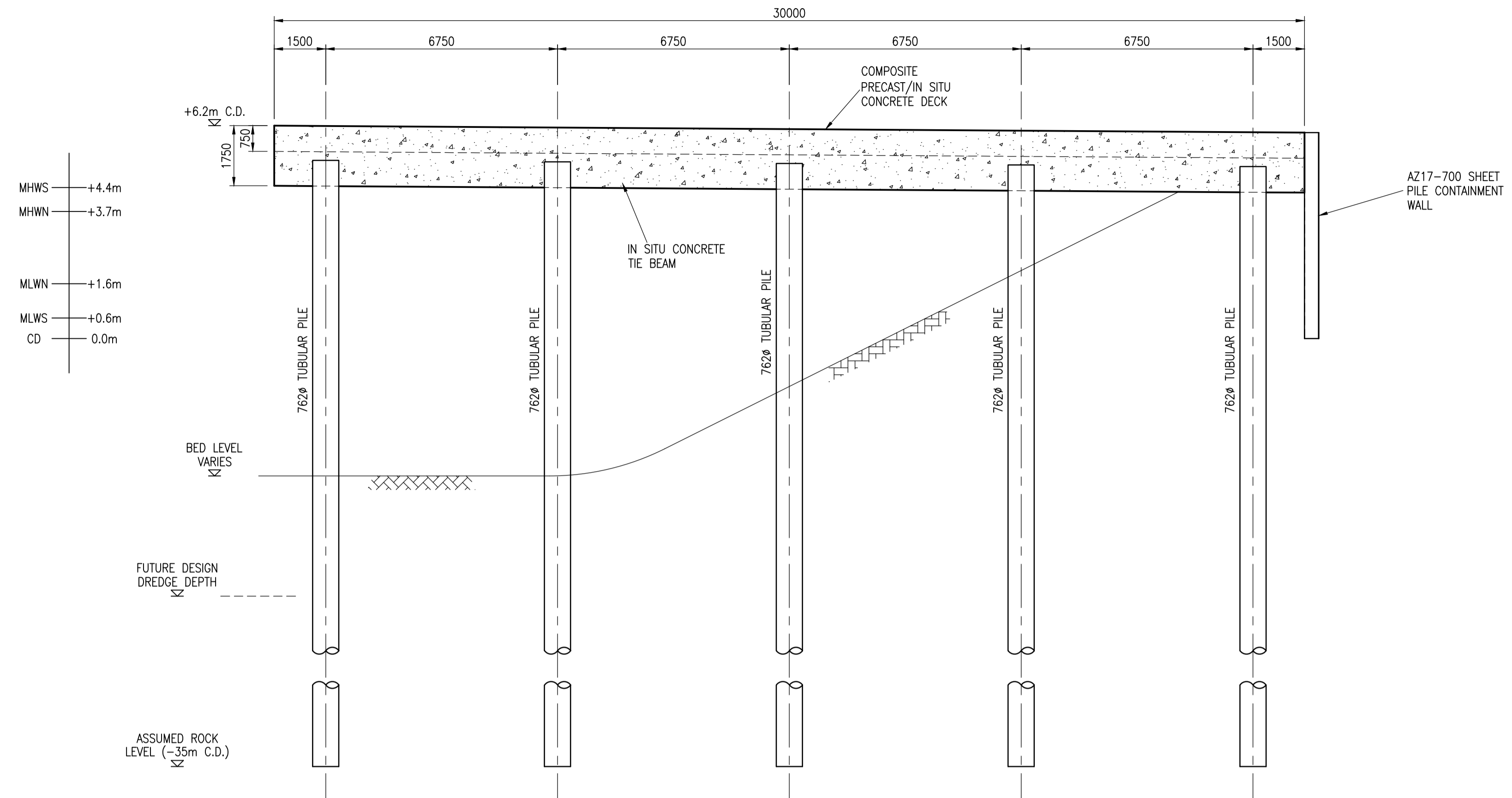
PROJECT :
**MALIN GROUP PROPERTIES LIMITED
CARLESS SUSPENDED DECK OPTION STUDY**

TITLE :
**OPTION 4
GENERAL ARRANGEMENT**

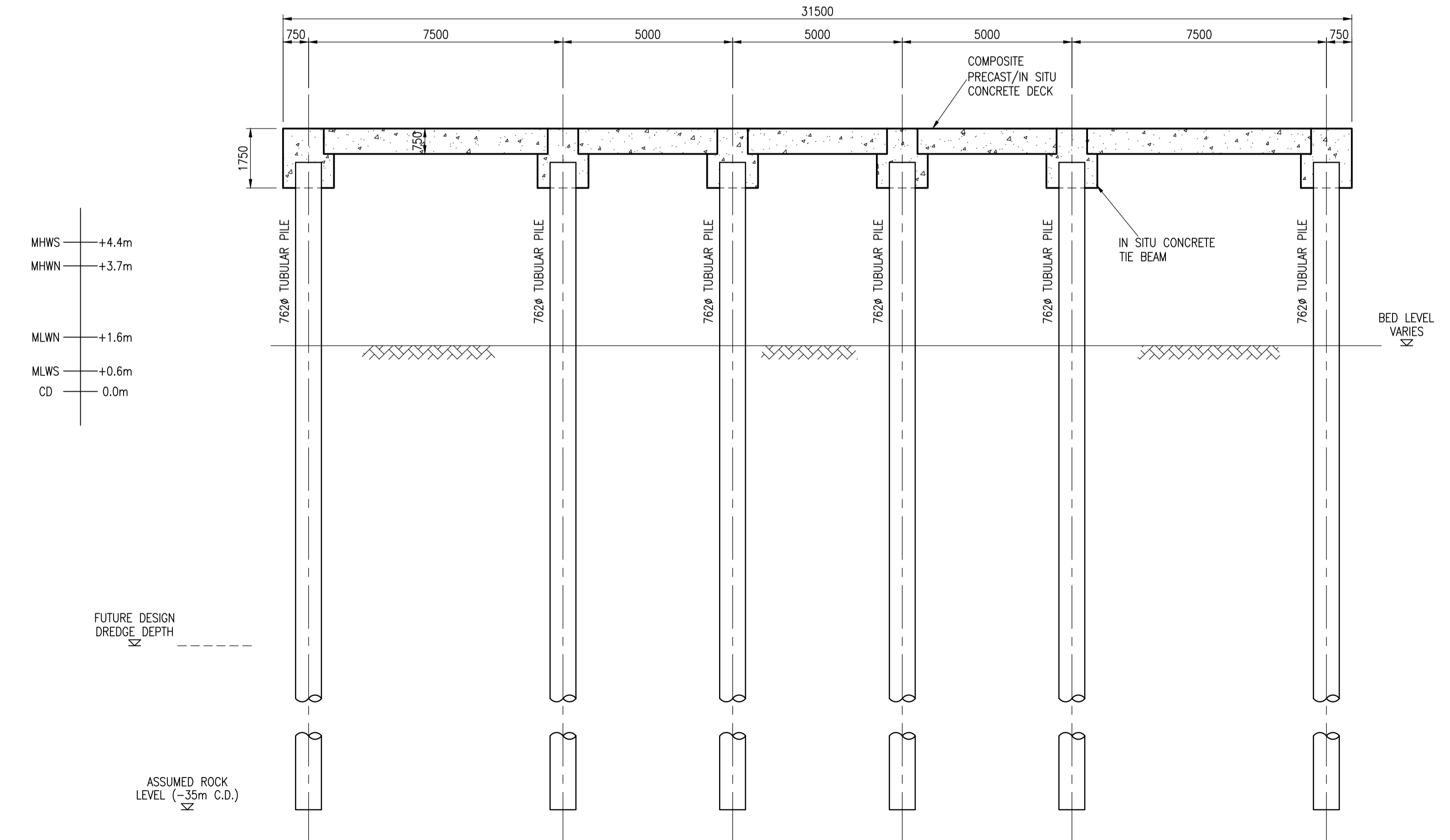
DRAWN : W.J.	DATE : 20.12.18	VERIFIED : J.McL.	APPROVED : G.B.
-----------------	--------------------	----------------------	--------------------

SCALE : (A1) AS SHOWN	DRAWING STATUS : PRELIMINARY
--------------------------	---------------------------------

DRAWING No : 185057/008	REV : /
----------------------------	------------



SECTION A-A
SCALE 1 : 100



SECTION B-B
SCALE 1 : 100

REV	DATE	REVISION DESCRIPTION	DRN	VER
THIS DRAWING IS COPYRIGHT © DO NOT SCALE FROM THIS DRAWING.				

Arch Henderson
1919

Civil Engineers
Structural Engineers
Principal Designers
Architects
Geotechnical services
Environmental services

142 St. Vincent Street, Glasgow G2 5LA.
Tel : 0141 227 3060 - Fax : 0141 248 9542
www.arch-henderson.co.uk - email : glasgow@arch-henderson.co.uk

Offices in : Aberdeen, Dundee, Falkland Islands, Glasgow, Inverness, Lerwick, Southampton, Stranraer and Thurso

PROJECT :
**MALIN GROUP PROPERTIES LIMITED
CARLESS SUSPENDED DECK OPTION STUDY**

TITLE :
**OPTION 4
TYPICAL SECTIONS**

DRAWN : W.J.	DATE : 20.12.18	VERIFIED : J.McL.	APPROVED : G.B.
SCALE : (A1) AS SHOWN		DRAWING STATUS : PRELIMINARY	

DRAWING No : 185057/009	REV : /
-----------------------------------	------------