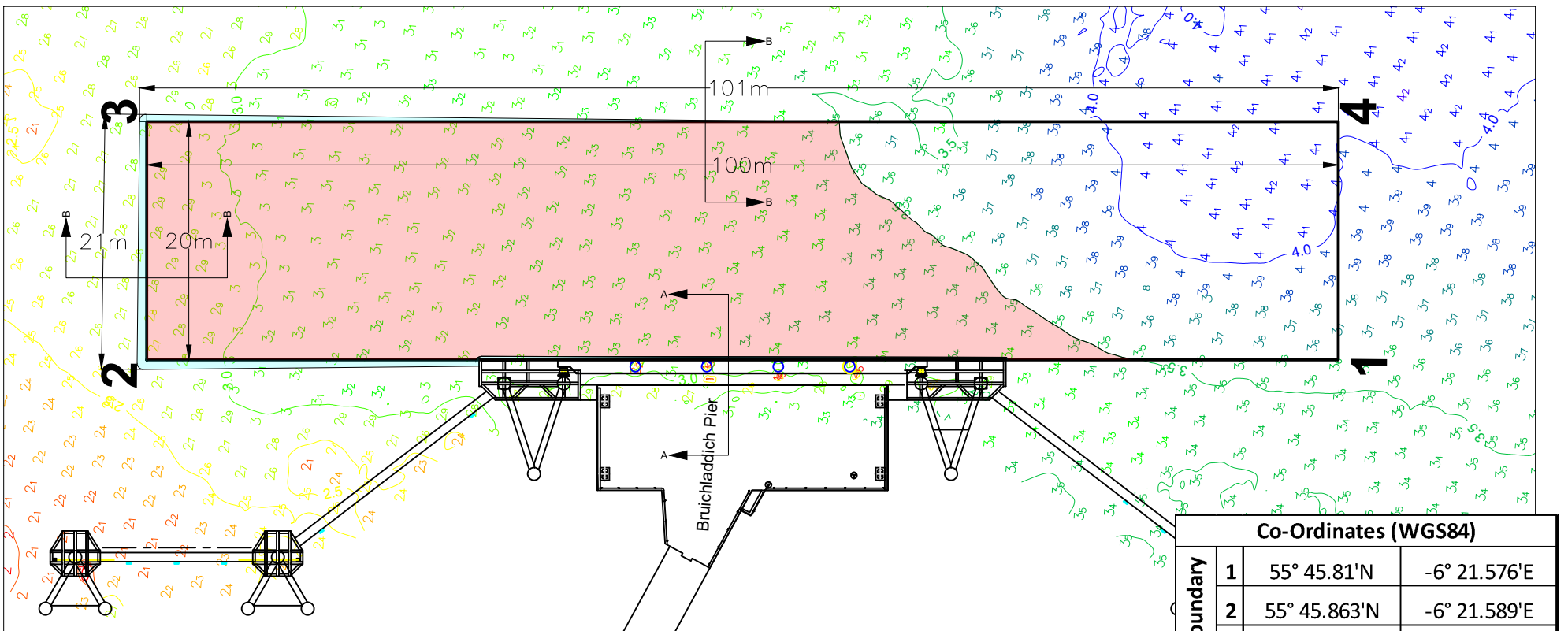


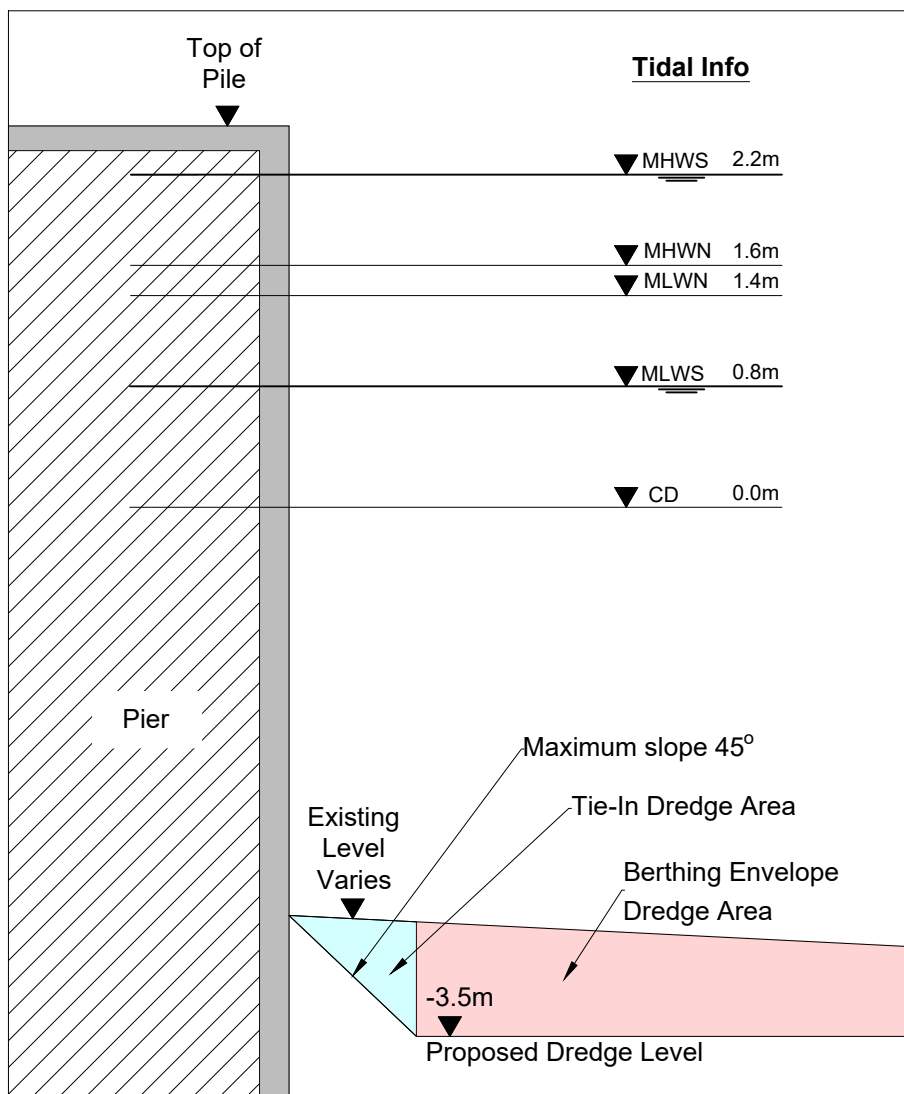
ARGYLL & BUTE COUNCIL --- DEVELOPMENT AND INFRASTRUCTURE SERVICES



Proposed Dredge Area Plan

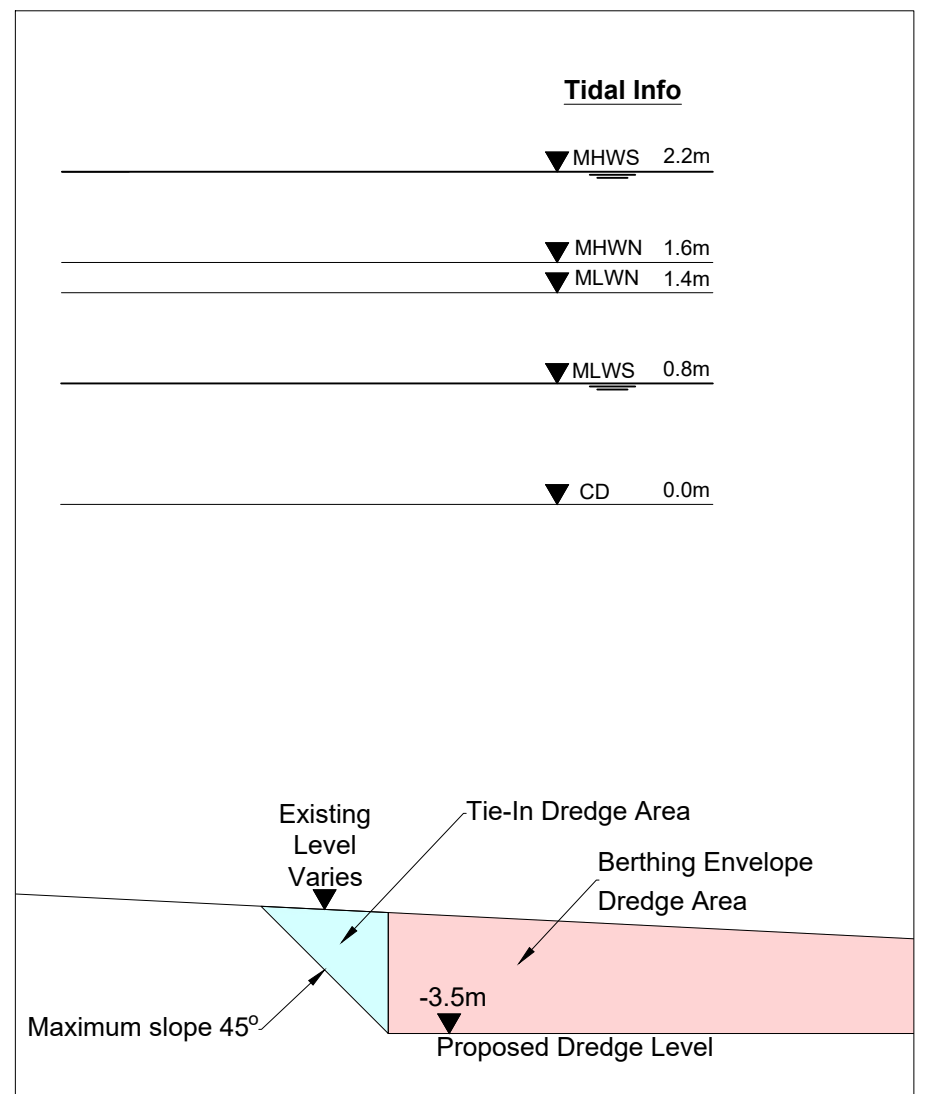
see note 3
Scale 1:500

Co-Ordinates (WGS84)		
Site Boundary	1	55° 45.81'N -6° 21.576'E
	2	55° 45.863'N -6° 21.589'E
	3	55° 45.864'N -6° 21.571'E
	4	55° 45.811'N -6° 21.557'E



Section A-A

Vertical Scale 1:50



Section B-B

Vertical Scale 1:50

NOTES :

- 1) All dimensions are in metres unless noted otherwise.
- 2) All levels are in metres below Chart Datum.
- 3) 2015 Bathymetric Survey levels shown in Proposed Dredge Area Plan.

© Crown copyright and database right 2019. All right reserved.
Ordnance Survey Licence number 100023368

TITLE	Director of Development and Infrastructure Services Pippa Milne		
	DESIGNED BY	JS	DRAWING NUMBER:
DESIGN OFFICE, MANSE BRAE, LOCHGILPHEAD, ARGYLL, PA31 8RD	DRAWN BY	JS	00040-29 / 005
	CHECKED BY	ES	SCALE:
	APPROVED BY	ES	As Shown at A3
	DATE	18/09/19	