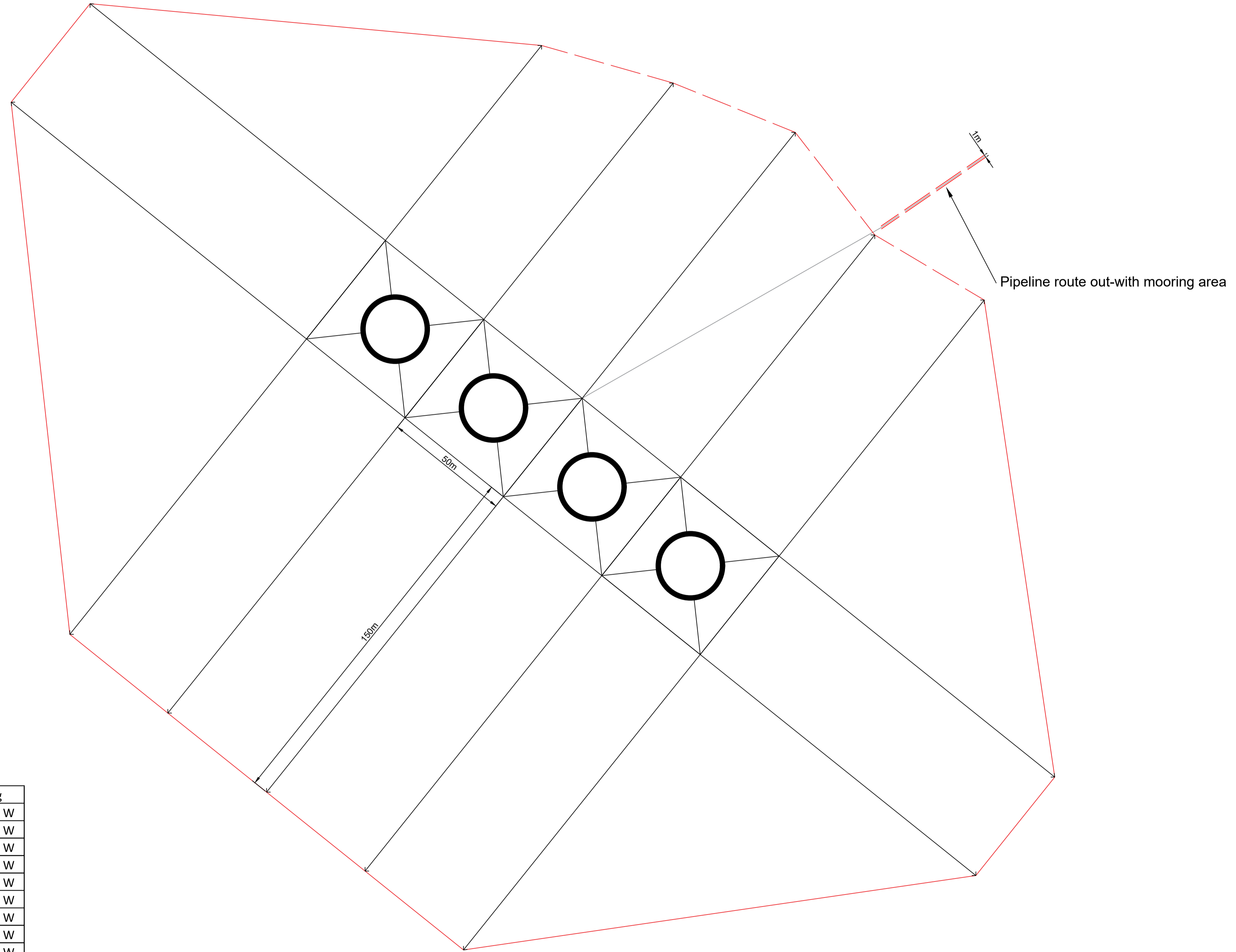
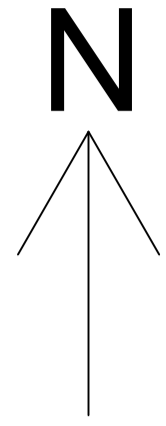


Site Plan -Lochmaddy Freshwater Abstraction & Storage Site



Location:	Lat	Long
Storage site centre	57° 36.912' N	7° 7.013' W
External edges	57° 36.931' N	7° 6.832' W
	57° 36.828' N	7° 6.834' W
	57° 36.809' N	7° 6.869' W
	57° 36.811' N	7° 7.076' W
	57° 36.829' N	7° 7.108' W
	57° 36.850' N	7° 7.145' W
	57° 36.867' N	7° 7.174' W
	57° 36.889' N	7° 7.213' W
	57° 37.002' N	7° 7.204' W
	57° 37.019' N	7° 7.162' W
	57° 36.998' N	7° 6.992' W
	57° 36.986' N	7° 6.941' W
	57° 36.971' N	7° 6.896' W
	57° 36.948' N	7° 6.871' W

* Boundary follows shoreline between these two locations

General Notes

No.	Revision/Issue	Date

Firm Name and Address

Project Name and Address
 FW Abstraction/Storage
 Caolas
 Lochmaddy
 North Uist

Project	Site Plan	Sheet
Date	13.03.2020	1
Scale	As noted	