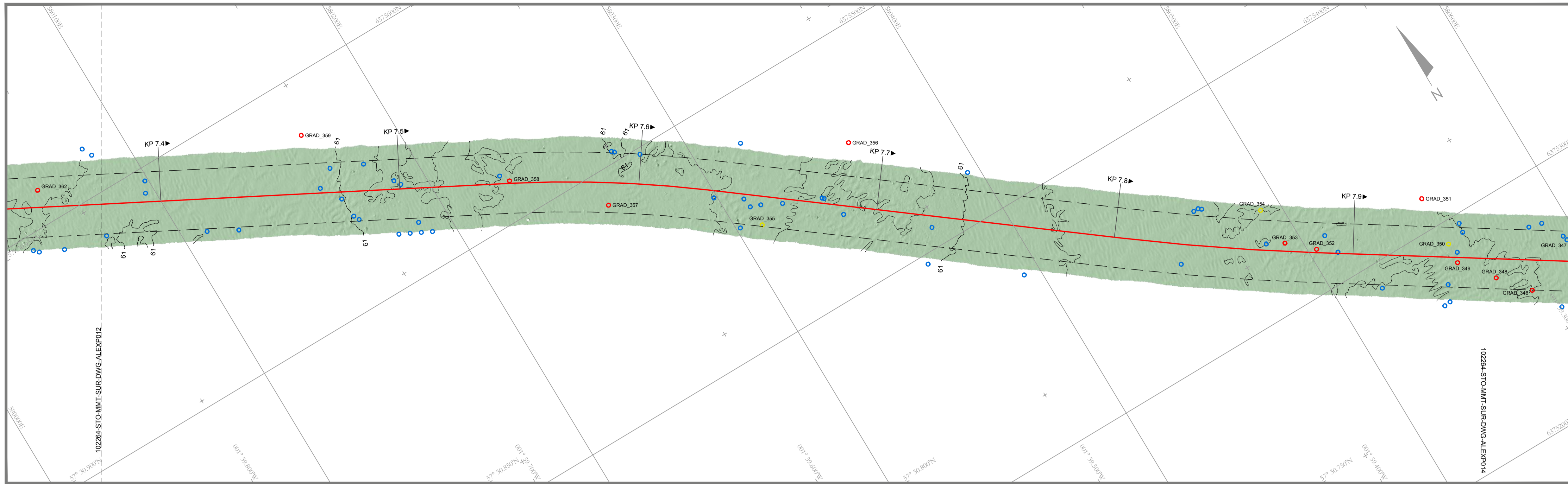


BATHYMETRY - Horizontal Scale 1:1000



SURVEY NOTES

Horizontal Datum	: WGS84, Grid north displayed in charts
Projection	: UTM Zone 30 N, Chart Latitude and Longitude are given in format DMMM mmm
Central Scale Factor	: 0.9996
False Easting	: 500 000 m
False Northing	: 0 m
Latitude Origin	: 0°
Central Meridian	: 3° 00' 00"W
Dimensions	: In metres unless otherwise stated
Vertical Reference	: LAT
Height Model	: DTU10
Reference Document	: ST16826 Hywind Scotland UXO Survey Report: C178-MMT-G-RA-0005
Coastline	: From background database (for guidance only)
Survey Date	: April - May 2016
Offshore vessel	: MV Edda Fonn
Positioning	: Seapath with Fugro Starpack XP
Secondary Positioning	: Fugro Starpack XP
USBL Positioning	: Kongsberg HHPAP 500
ROV	: Kystdesign Supporter
INS Primary UW Positioning	: IXSEA ROVINS
INS Secondary UW Positioning	: IXSEA Octans 3000
Multibeam Echo Sounder	: Dual F230nc 2024 (200-400 kHz)
Side Scan Sonar	: Edgetech 4200 (300/600 kHz)
Gradiometer	: Innovatum Gradiometer Array (12 sensor)

LEGEND

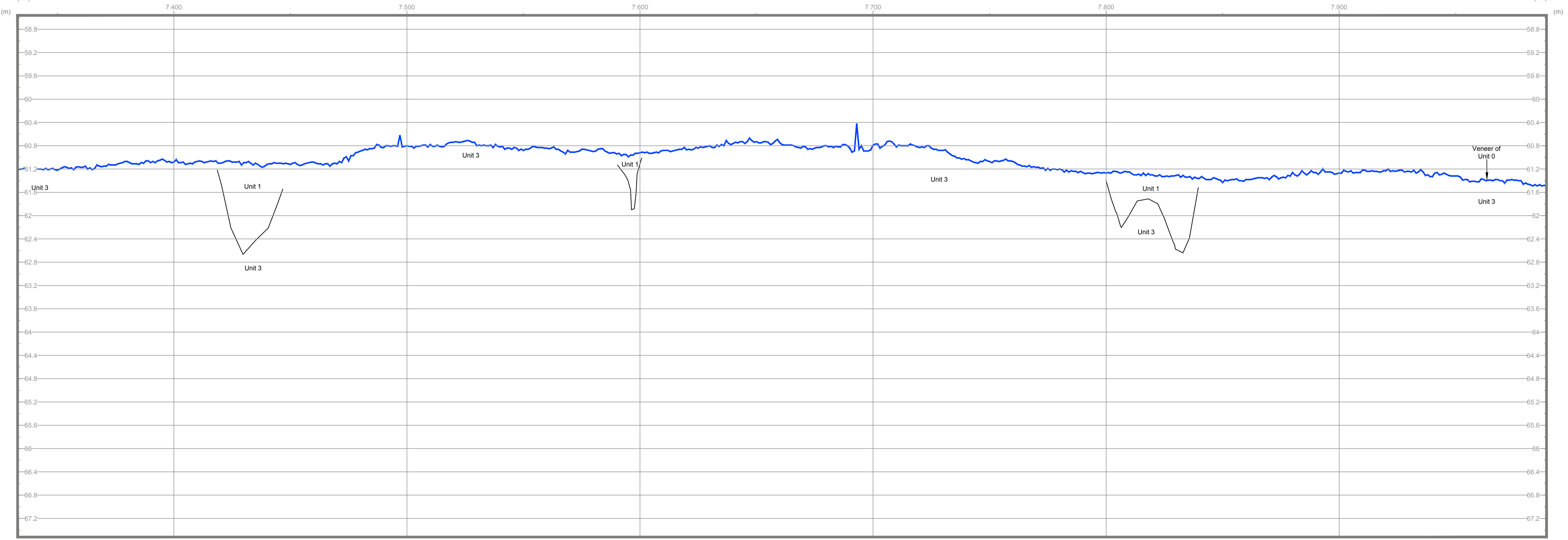
	Surveyed Cable Route with KP		Matchline to neighbouring chart
	Adjacent Surveyed Cable Route		Detected Cables Survey 2013
	Geophysical Survey Corridor		Planned Anchor Lines (client supplied)
	Territorial Border		Wind Turbine Generator (client supplied)

BATHYMETRY

	Water Depth Contour (interval 0.2 m)		GRAD_001 Potential UXO (<10kg)
	Water Depth Contour (interval 1 m) with labels		GRAD_001 Potential UXO (>10kg)
	BOR-001 Borehole Location with ID *		G-001 ROV Inspected Target with ID **
	CPT-001 CPT Location with ID *		Gradiometer Anomaly

Notes:
 * Borehole and CPT locations taken from Statoil Doc. No.: C178-GGI-G-RA-00002_02
 ** ROV Inspected position refers to As-Found or Re-located target position

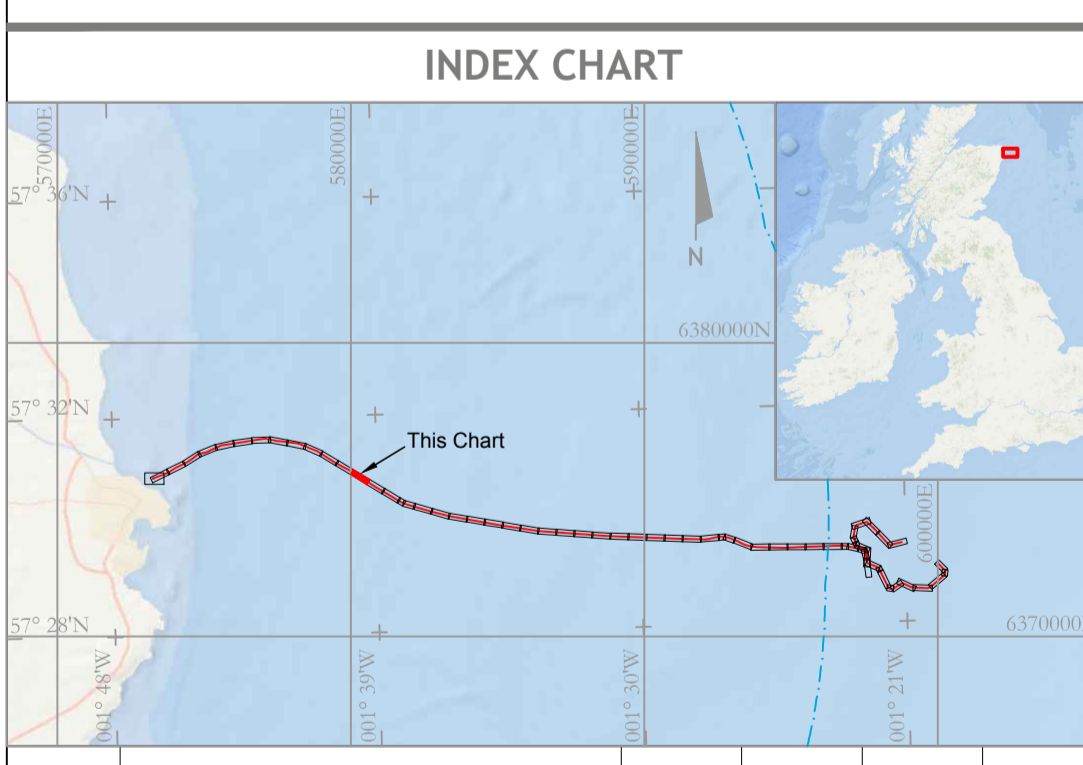
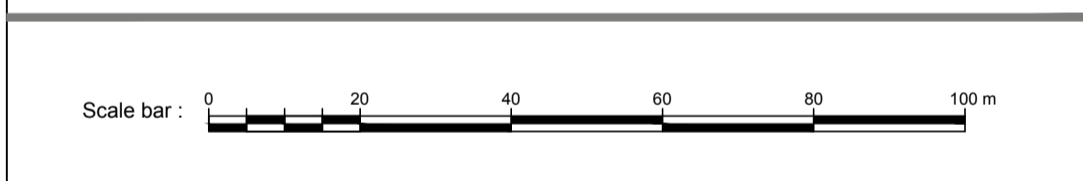
LONGITUDINAL PROFILE WITH SHALLOW GEOLOGY - Vertical Scale 1:40



LONGITUDINAL PROFILE WITH SHALLOW GEOLOGY

	Seabed Profile		Internal Reflector
	Reflector		C-034 Sampling Location with ID

Unit	Acoustic Characteristics	Geological interpretation
0	Good acoustic penetration. Medium to high reflectivity. Limited to rare internal structure.	Holocene deposits, typically consisting of gravely silty fine to medium SAND along the cable route and slightly silty fine to medium SAND in proximity to the wind farm area.
1	Good acoustic penetration. Medium to high reflectivity. Limited to rare internal structure.	Forth Formation, slightly silty to silty, very gravely, fine to coarse SAND.
2a	Varying degrees of penetration. Low to high reflectivity. Low to high amplitude internal reflectors alternating with transparent sections, occasionally with parallel to sub parallel internal reflectors	Witch Ground Formation - Witch member, very soft to firm, slightly silty, slightly sandy to sandy, slightly gravely CLAY.
2b	Varying degrees of penetration. Low to high reflectivity. Low to high amplitude internal reflectors alternating with transparent sections, occasionally with parallel to sub parallel internal reflectors	Witch Ground Formation - Fladen member, soft to firm slightly sandy slightly gravely CLAY.
3a	No acoustic penetration. Top of unit characterised by irregular high amplitude reflector. Associated with mounded numerous boulder areas where outcropping. (Usually indistinguishable from Unit 2 where buried).	Wee Bankie Formation, stiff to hard, slightly sandy gravely CLAY.
3b	Varying degrees of penetration. Low to high reflectivity. Low to high amplitude near chaotic internal reflectors	Wee Bankie Formation, silty to very silty SAND.
4	No acoustic penetration. Top of unit characterised by irregular reflector of high amplitude.	BEDROCK



ENGINEERING DATA

A	Issued For Use	JH	HA	KG	20160712
02	For Client Review	JH	HA	KG	20160614
Revision	Revision Description	Drawn	Checked	Approved	Date
Contractor: MMT Sven Kallifelts Gata 11 SE-426 71 Västra Frölunda Sweden Tel: +46 31 762 03 00 info@mmt.se					
Survey date:	April - May 2016	Project:	2016 Hywind UXO Survey UK EAST COAST		
Horizontal Scale:	1:1000	Title:	Alignment Chart KP 7.333 - KP 7.989		
Profile Vertical Scale:	1:40	Export Cable H55 - Peterhead			
Chart size:	ISO A1 - 841 x 594 mm	Report No.	ST16826		
		Drawing No.	102264-STO-MMT-SUR-DWG-ALEXP013		
		C178-MMT-G-YA-00014-01		A	
		Client Drawing No.	Revision		