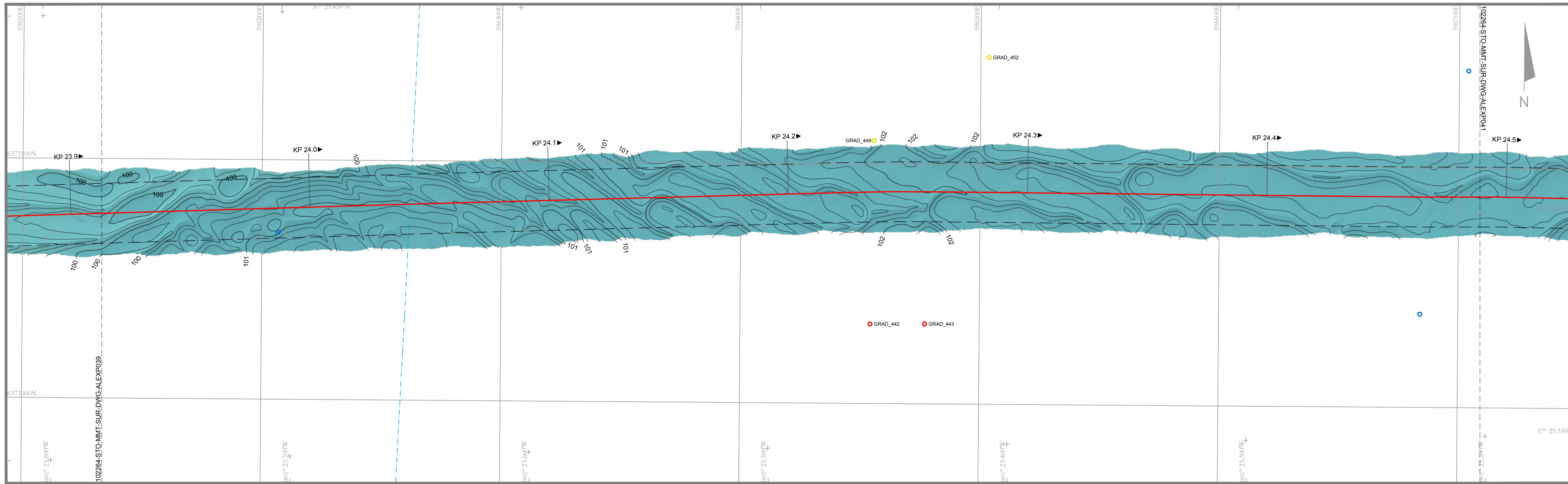


BATHYMETRY - Horizontal Scale 1:1000



### SURVEY NOTES

Horizontal Datum	: WGS84, Grid north displayed in charts
Projection	: UTM Zone 30 N
Chart Latitude and Longitude	: are given in format DMM mmm
Scale Factor	: 0.9996
False Easting	: 500 000 m
False Northing	: 0 m
Latitude Origin	: 0°
Central Meridian	: 3° 00' 00"W
Dimensions	: in metres unless otherwise stated
Vertical Reference	: LAT
Height Model	: DTU10
Reference Document	: ST16826 Hywind Scotland UXO Survey Report: C178-MMT-G-RA-00005
Coastline	: From background database (for guidance only)
Survey Date	: April - May 2016

Offshore vessel	: MV Edda Fonn
Positioning	: Seapath with Fugro Starpack XP
Secondary Positioning	: Fugro Starpack XP
USBL Positioning	: Kongsberg HYPAP 500
ROV	: Kystdesign Supporter
INS Primary UW Positioning	: IXSEA ROVINS
INS Secondary UW Positioning	: IXSEA Octans 3000
Multibeam Echo Sounder	: Dual F2500 (200-400 kHz)
Side Scan Sonar	: Edgetech 4200 (300/600 kHz)
Gradiometer	: Innovatum Gradiometer Array (12 sensor)

### LEGEND

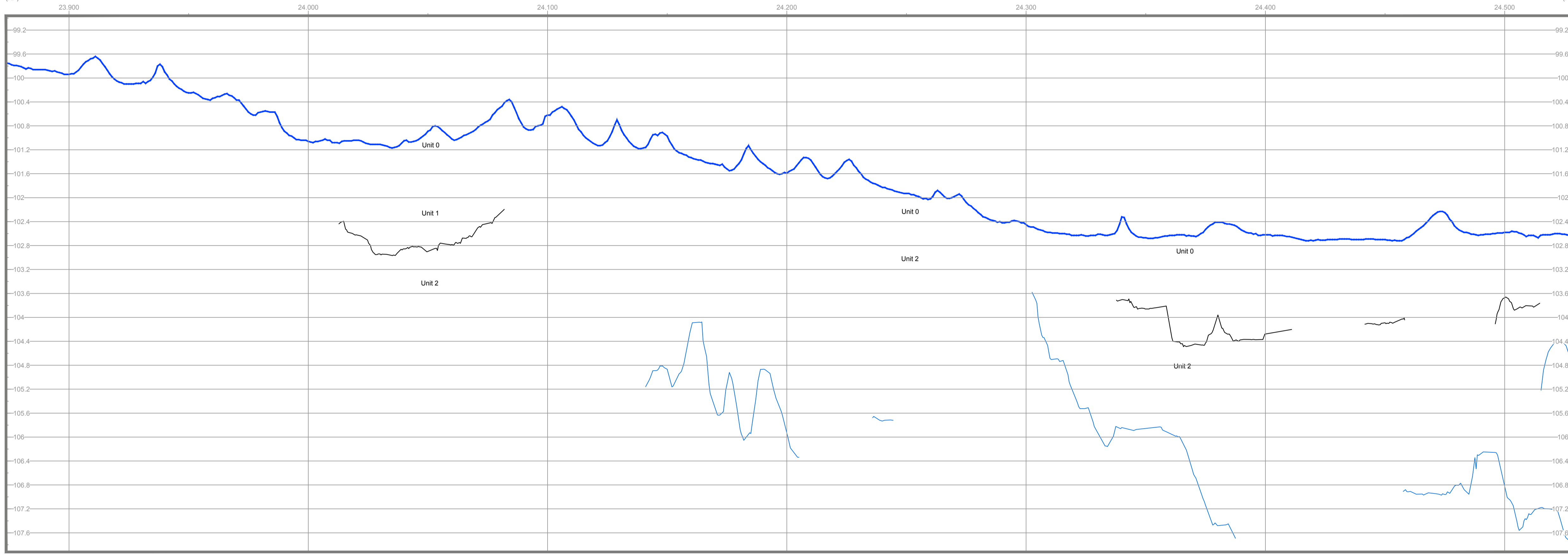
	Surveyed Cable Route with KP		Matchline to neighbouring chart
	Adjacent Surveyed Cable Route		Detected Cables Survey 2013
	Planned Anchor Lines (client supplied)		Planned Anchor Lines (client supplied)
	Geophysical Survey Corridor		Wind Turbine Generator (client supplied)
	Territorial Border		

### BATHYMETRY

	Water Depth Contour (interval 0.2 m) with labels		Potential UXO (5-10kg)
	Water Depth Contour (interval 1 m) with labels		Potential UXO (>10kg)
	Borehole Location with ID *		ROV Inspected Target with ID **
	CPT Location with ID *		Gradiometer Anomaly

Notes:  
 \* Borehole and CPT locations taken from Statoil Doc. No.: C178-GGI-G-RA-00002\_02  
 \*\* ROV Inspected position refers to As-Found or Re-located target position

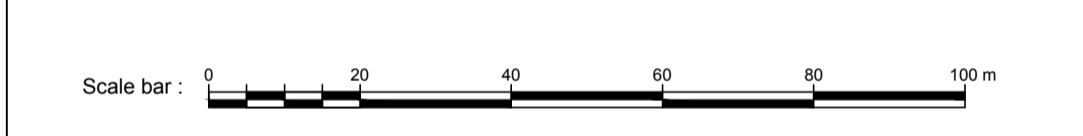
LONGITUDINAL PROFILE WITH SHALLOW GEOLOGY - Vertical Scale 1:40



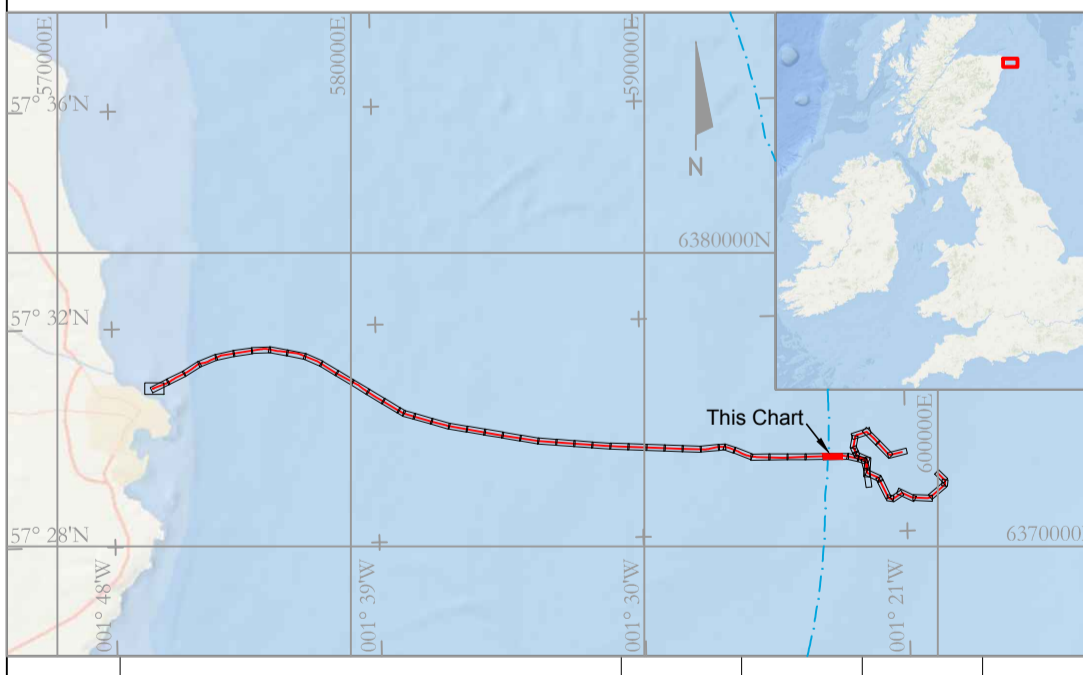
LONGITUDINAL PROFILE WITH SHALLOW GEOLOGY

	Seabed Profile		Internal Reflector
	Reflector		Sampling Location with ID

Unit	Acoustic Characteristics	Geological interpretation
0	Good acoustic penetration. Medium to high reflectivity. Limited to rare internal structure.	Holocene deposits, typically consisting of gravely silty fine to medium SAND along the cable route and slightly silty fine to medium SAND in proximity to the wind farm area.
1	Good acoustic penetration. Medium to high reflectivity. Limited to rare internal structure.	Forth Formation, slightly silty to silty, very gravely, fine to coarse SAND.
2a	Varying degrees of penetration. Low to high reflectivity. Low to high amplitude internal reflectors alternating with transparent sections, occasionally with parallel to sub parallel internal reflectors	Witch Ground Formation - Witch member, very soft to firm, slightly silty, slightly sandy to sandy, slightly gravely CLAY.
2b	Varying degrees of penetration. Low to high reflectivity. Low to high amplitude internal reflectors alternating with transparent sections, occasionally with parallel to sub parallel internal reflectors	Witch Ground Formation - Fladen member, soft to firm slightly sandy slightly gravely CLAY.
3a	No acoustic penetration. Top of unit characterised by irregular high amplitude reflector. Associated with mounded numerous boulder areas where outcropping. (Usually indistinguishable from Unit 2 where buried).	Wee Bankie Formation, stiff to hard, slightly sandy gravely CLAY.
3b	Varying degrees of penetration. Low to high reflectivity. Low to high amplitude near chaotic internal reflectors	Wee Bankie Formation, silty to very silty SAND.
4	No acoustic penetration. Top of unit characterised by irregular reflector of high amplitude.	BEDROCK



INDEX CHART



ENGINEERING DATA

Revision	Revision Description	Drawn	Checked	Approved	Date
A	Issued For Use	JH	HA	KG	20160712
02	For Client Review	JH	HA	KG	20160614

Contractor:		
MMT Sven Kallifelts Gata 11 SE-426 71 Västra Frölunda Sweden		Tel: +46 31 762 03 00 info@mmt.se
Survey date:	April - May 2016	Project:
Horizontal Scale:	1:1000	2016 Hywind UXO Survey UK EAST COAST
Profile Vertical Scale:	1:40	Title: Alignment Chart KP 23.874 - KP 24.530 Export Cable H55 - Peterhead
Chart size:	ISO A1 - 841 x 594 mm	Report No. ST16826
		Drawing No. 102264-STO-MMT-SUR-DWG-ALEXP040
		C178-MMT-G-YA-00041-01
		Client Drawing No. A
		Revision