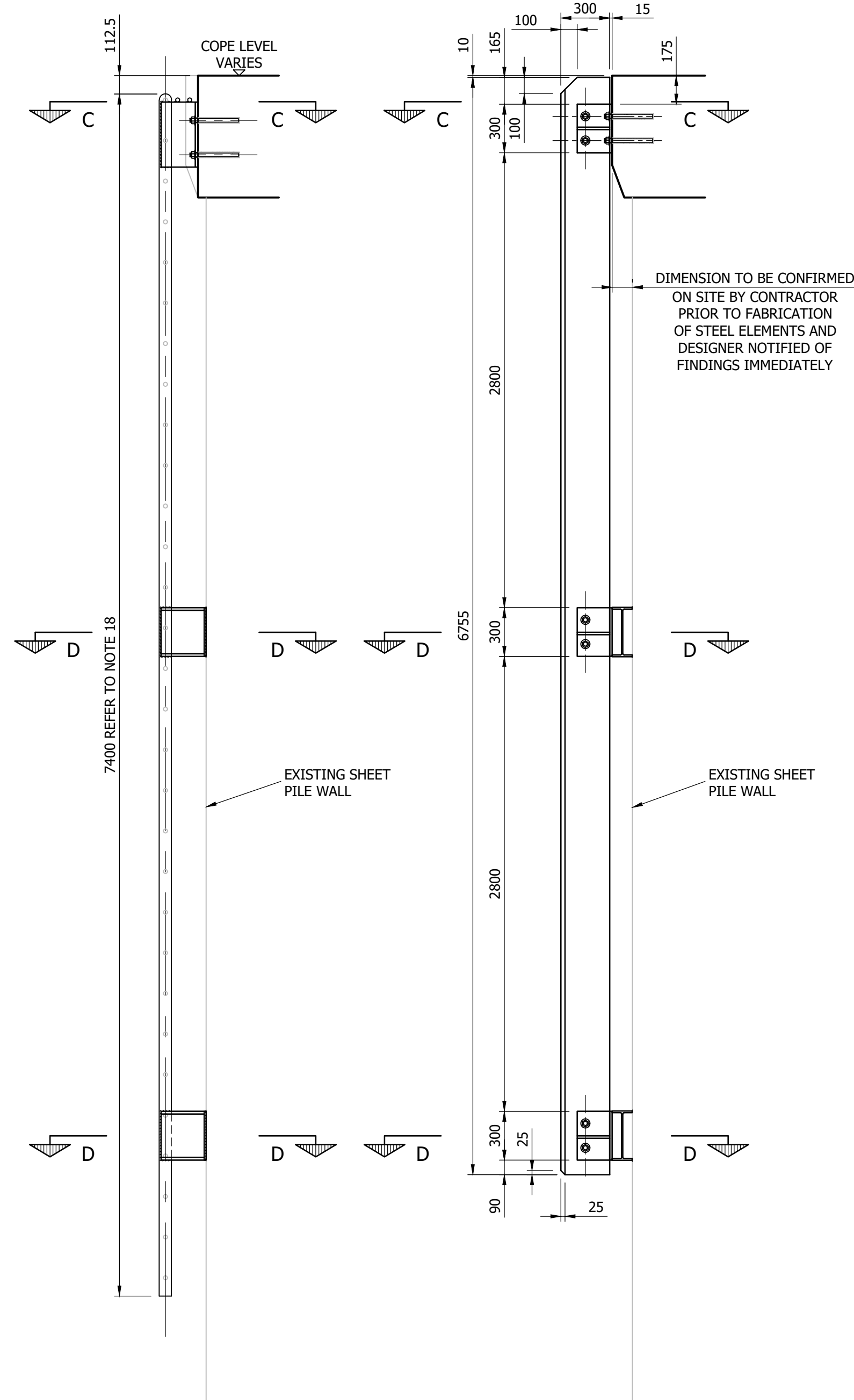
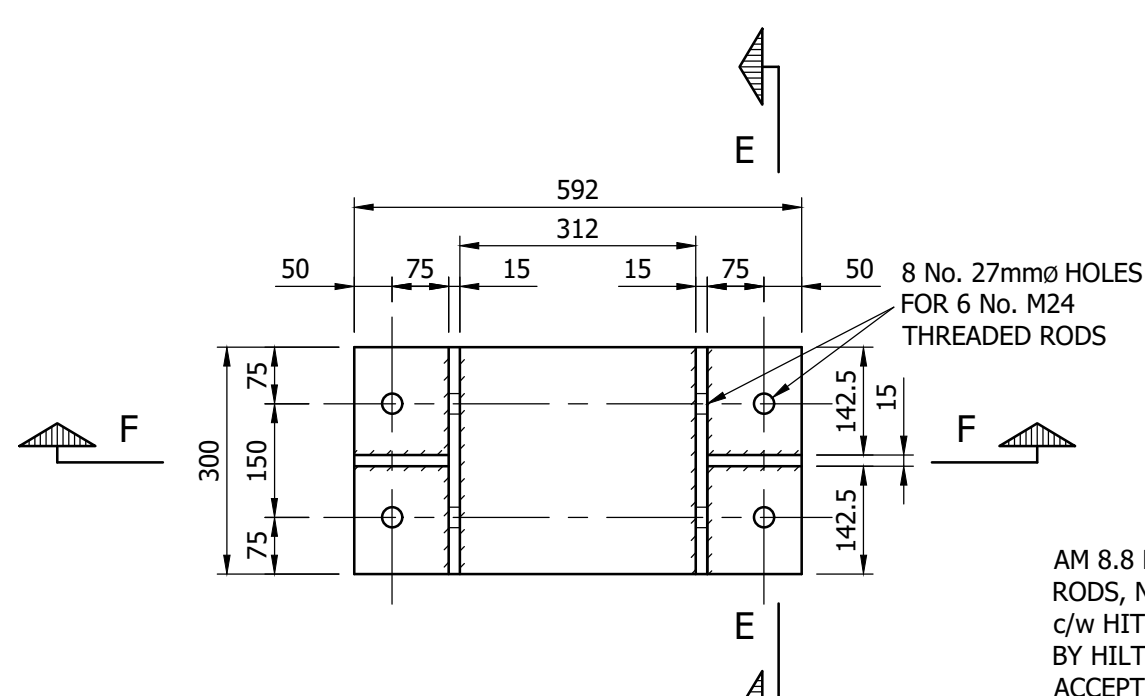


**ELEVATION ON NEW LADDER**  
SCALE 1 : 25

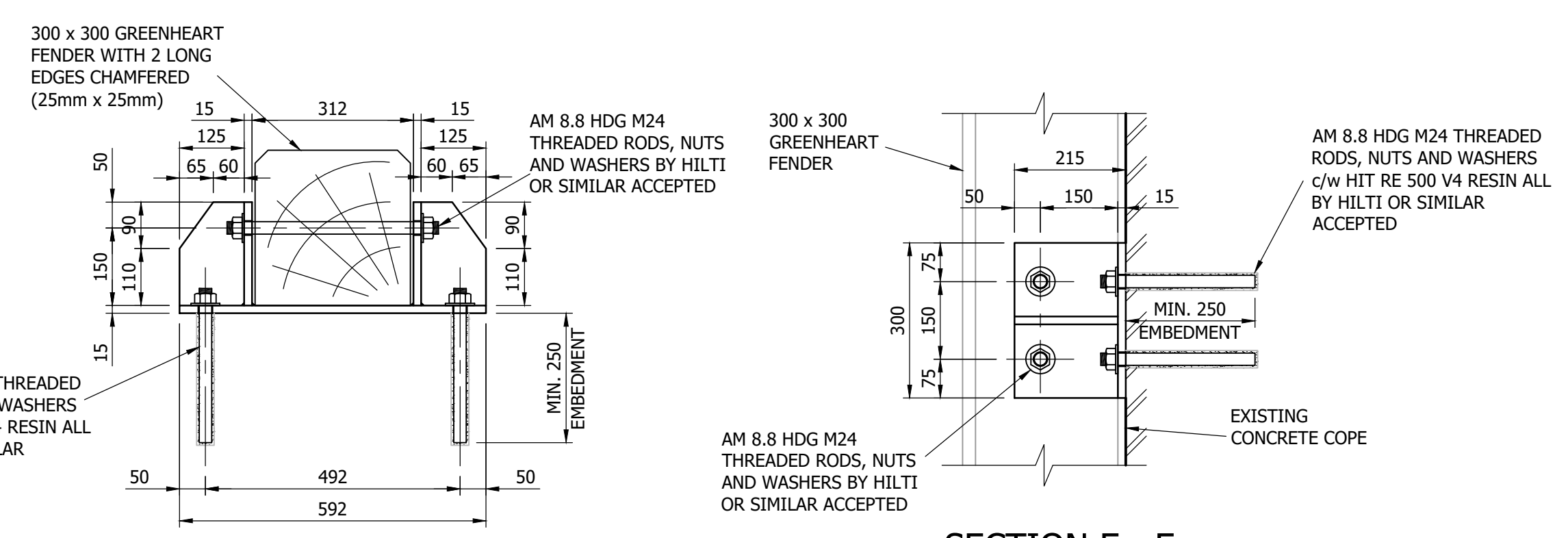


**SECTION A - A**  
SCALE 1 : 25

**SECTION B - B**  
SCALE 1 : 25



**ELEVATION ON FENDER FIXING BRACKET**  
SCALE 1 : 10

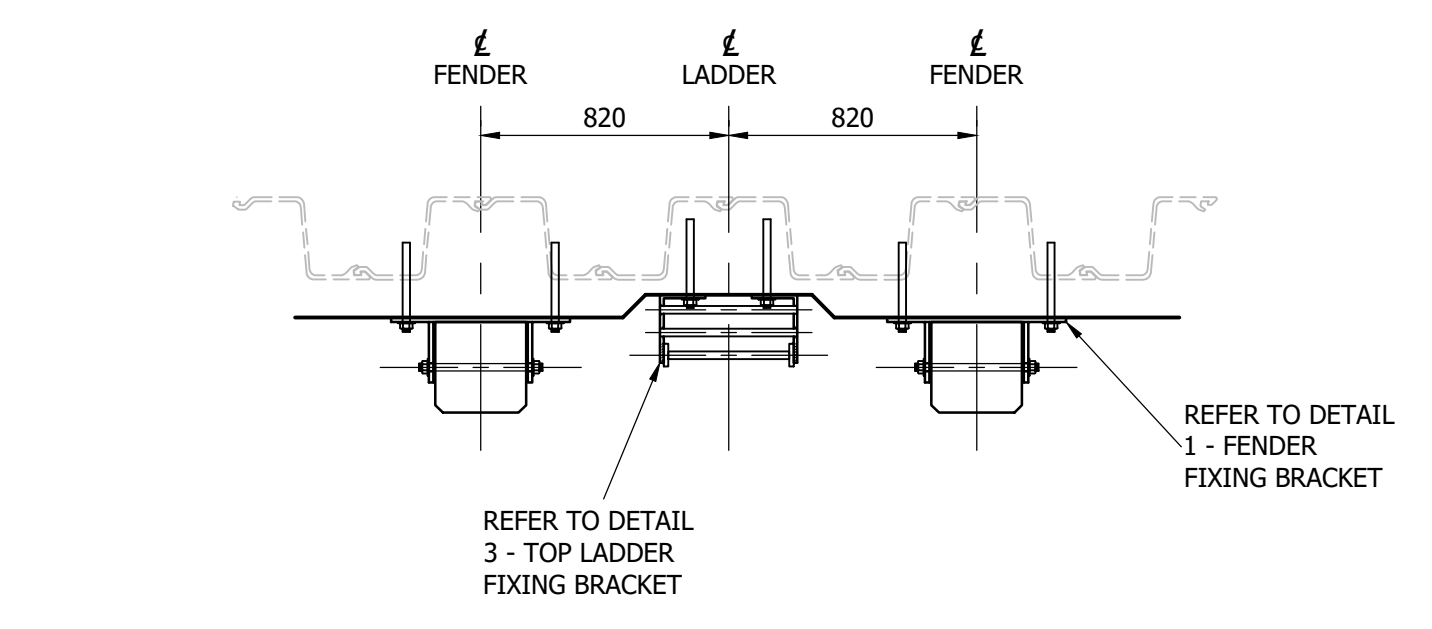


**SECTION F - F**  
SCALE 1 : 10

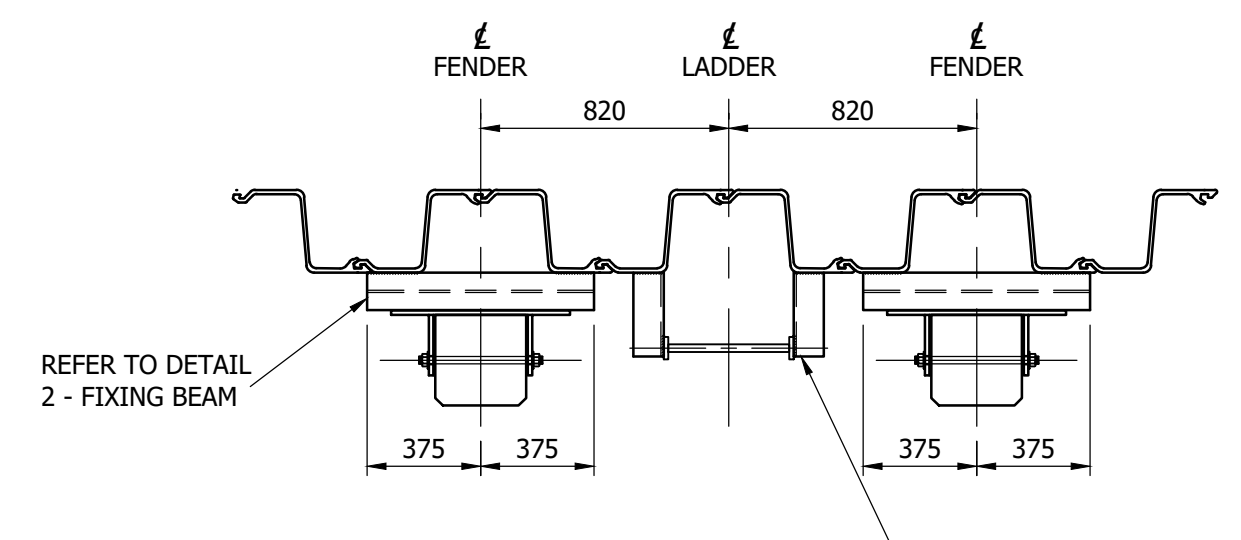
**SECTION E - E**  
SCALE 1 : 10

**DETAIL 1 - FENDER FIXING BRACKET**

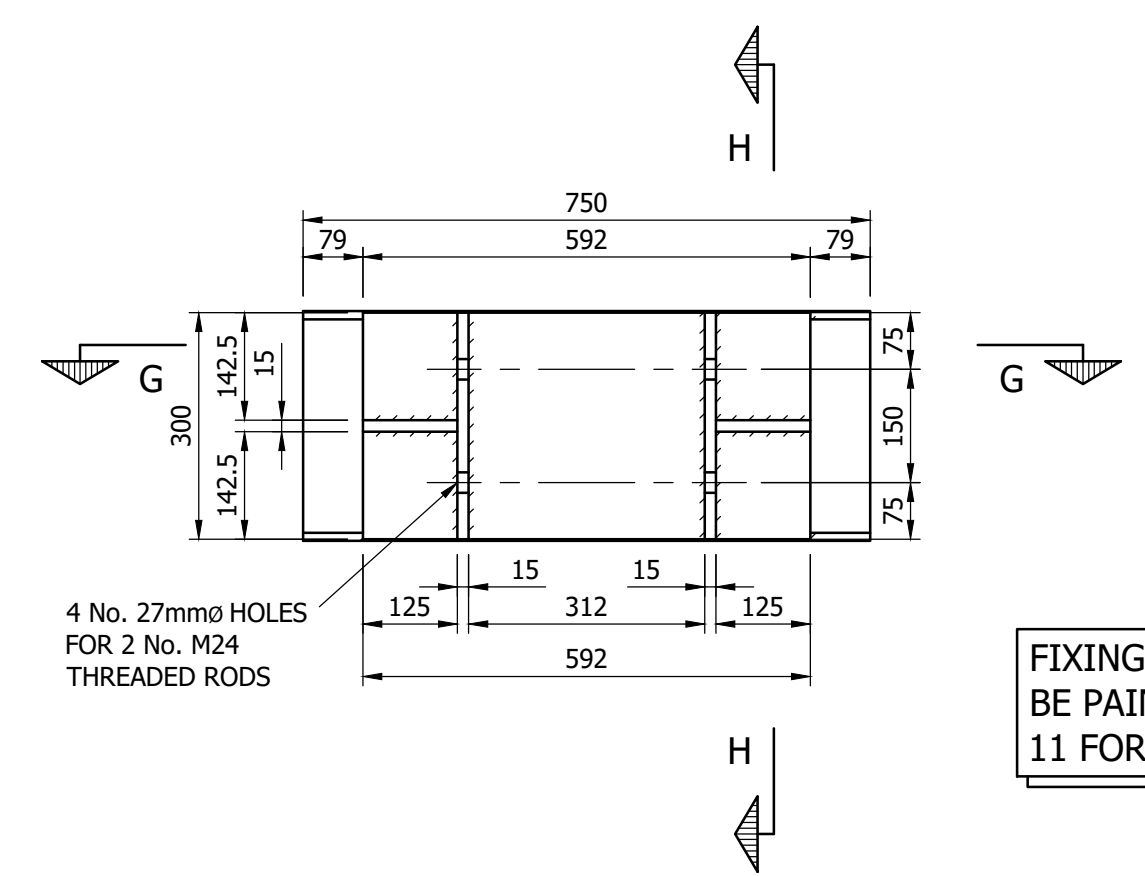
2 No. REQUIRED THUS



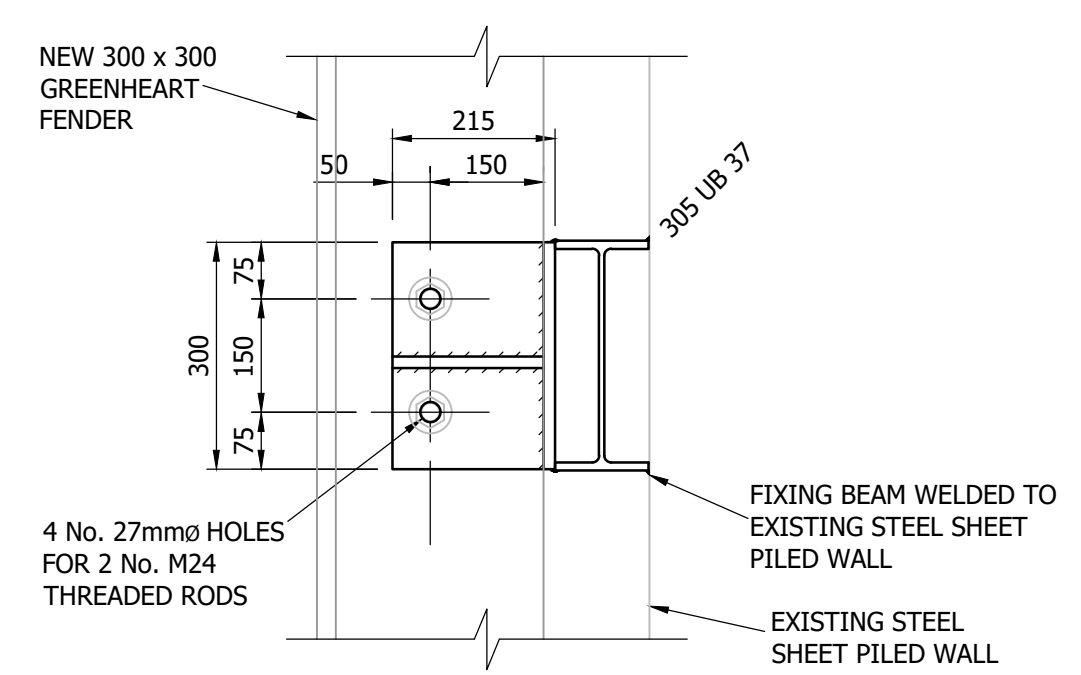
**SECTION C - C**  
SCALE 1 : 25



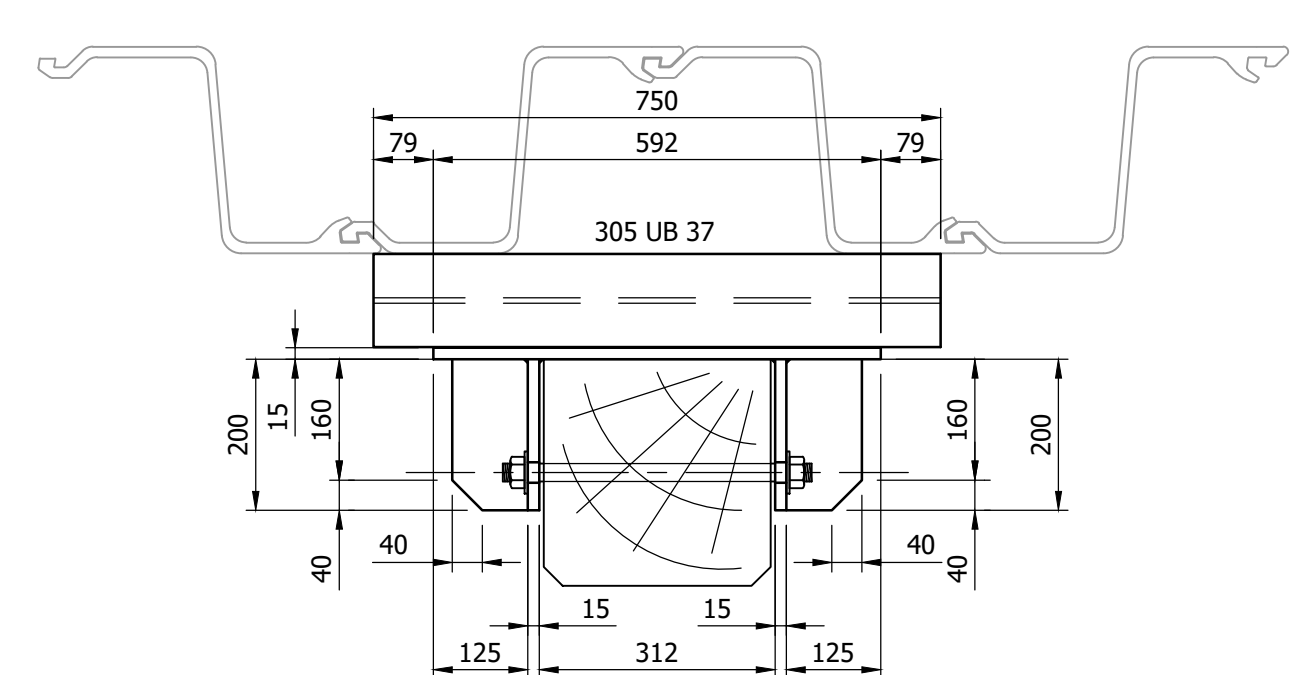
**SECTION D - D**  
SCALE 1 : 25



**ELEVATION ON FIXING BEAM**  
SCALE 1 : 10



**SECTION H - H**  
SCALE 1 : 10



**SECTION G - G**  
SCALE 1 : 10

**DETAIL 2 - FIXING BEAM**

4 No. REQUIRED THUS

**NOTES**

1. STEELWORK HOT ROLLED SECTIONS TO BS EN 10365 : 2017.
2. ALL STEELWORK GRADE S355 JO UNLESS NOTED OTHERWISE.
3. BOLTS TO BS 3692 GRADE 8.8 GALVANISED IN 3mm CLEARANCE HOLES UNLESS NOTED OTHERWISE.
4. WELDING IN ACCORDANCE WITH BS EN 1011-1 : 2009. FILLET WELDS ARE 6mm UNLESS NOTED OTHERWISE. FILLET WELDS ARE CONTINUOUS TO FORM A COMPLETE SEAL WHERE TWO MEMBERS JOIN OR ABUT.
5. ALL STEELWORK HOT DIP GALVANISED TO BS EN ISO 1461 TO A NOMINAL DRY FILM THICKNESS OF 140 MICRONS UNLESS NOTED OTHERWISE.
6. ALL STEELWORK CLEANED TO BS EN ISO 8501-1 PREPARATION GRADE SA 2.5.
7. NO IDENTIFICATION MARKS ARE WELDED, PRINTED OR STAMPED TO VISIBLE STEELWORK.
8. ALL MATERIALS, FABRICATION AND WORKMANSHIP IN ACCORDANCE WITH NATIONAL STEELWORK SPECIFICATION FOR BUILDING CONSTRUCTION 6th EDITION AS PUBLISHED BY BCSA & SCI.
9. EXECUTION OF STEEL WORKS TO BS EN 1090 EXECUTION CLASS EXC2.
10. TOLERANCES OF NEW WORKS COMPLY WITH EXECUTION CLASS EXC2.
11. STEELWORK FOR FIXING BEAMS IS TO BE PAINTED WITH A PAINT SYSTEM WHICH HAS A SERVICE LIFE OF 15 YEARS TO FIRST MAINTENANCE UNDER EXPOSURE CONDITIONS CX AND WATER/SOIL CATEGORY LM2 AS APPROPRIATE IN ACCORDANCE WITH THE RECOMMENDATIONS OF BS EN ISO 12944-2 UNLESS STATED OTHERWISE. COLOUR OF PAINT TO BE BLACK.
12. WHERE WELDING HAS TAKEN PLACE UNDERWATER, STEEL IS TO BE PAINTED WITH BELZONA 5831 LT AND APPLIED IN STRICT ACCORDANCE WITH THE MANUFACTURERS WRITTEN RECOMMENDATIONS.
13. CONTRACTOR TO CONFIRM PLUMBNESS OF LADDERS AND TIMBER FENDERS PRIOR TO FINAL WELDING OF FIXING BRACKETS AND PACKER PLATES TO UB.
14. THE CONTRACTOR IS TO SATISFY THEMSELVES THAT THE EXISTING SHEET PILES HAVE A SUITABLE RESIDUAL THICKNESS OF STEEL THAT ALLOWS WELDING OF NEW STEELWORK TO THE EXISTING STEEL PILES WITHOUT RISK OF BURN THROUGH.
15. FOR LOCATIONS OF NEW LADDERS REFER TO ARCH HENDERSON DRAWING NUMBER 235053/001.
16. REFER TO ARCH HENDERSON DRAWING NUMBER 235053/003 FOR DETAILS 3 AND 4.
17. THE VERTICAL FACE OF THE CONCRETE COPE IS TO BE SCANNED USING A COVERMETER OR SIMILAR TO DETERMINE THE LOCATION OF EXISTING REINFORCEMENT PRIOR TO DRILLING FOR RESIN ANCHORS. NO EXISTING REINFORCEMENT IS TO BE CUT WITHOUT THE PRIOR ACCEPTANCE OF THE DESIGNER.
18. THE CONTRACTOR IS TO CONFIRM COPE LEVEL AT EACH LADDER LOCATION AND THE CORRESPONDING LADDER LENGTH, TO ENSURE THE BOTTOM RUNG OF EACH LADDER IS AT A MINIMUM LEVEL OF -1.3m CD.

2 No. LADDERS REQUIRED THUS

REV	DATE	REVISION DESCRIPTION	DRN	VER
THIS DRAWING IS COPYRIGHT . DO NOT SCALE FROM THIS DRAWING.				

**Arch Henderson** 1919

Civil Engineers  
Structural Engineers  
Principal Designers  
Architects  
Geotechnical services  
Environmental services

142 St. Vincent Street, Glasgow G2 5LA.  
Tel : 0141 227 3060 - Fax : 0141 248 9542  
www.arch-henderson.co.uk - email : glasgow@arch-henderson.co.uk

Offices in : Aberdeen, Dundee, Falkland Islands, Glasgow, Inverness, Lewick, Southampton, Stranraer and Thurso

PROJECT :  
**INVERCLYDE COUNCIL  
GREENOCK WATERFRONT REMEDIAL WORKS**

TITLE :  
**TYPICAL LADDER DETAILS  
SHEET 1 OF 2**

DRAWN : W.J.	DATE : 10/11/2023	VERIFIED : H.D.	APPROVED : M.S.
-----------------	----------------------	--------------------	--------------------

SCALE : (A1) AS SHOWN @ A1	DRAWING STATUS : TENDER
-------------------------------	----------------------------

DRAWING No : 235053/002	REV : /
----------------------------	------------