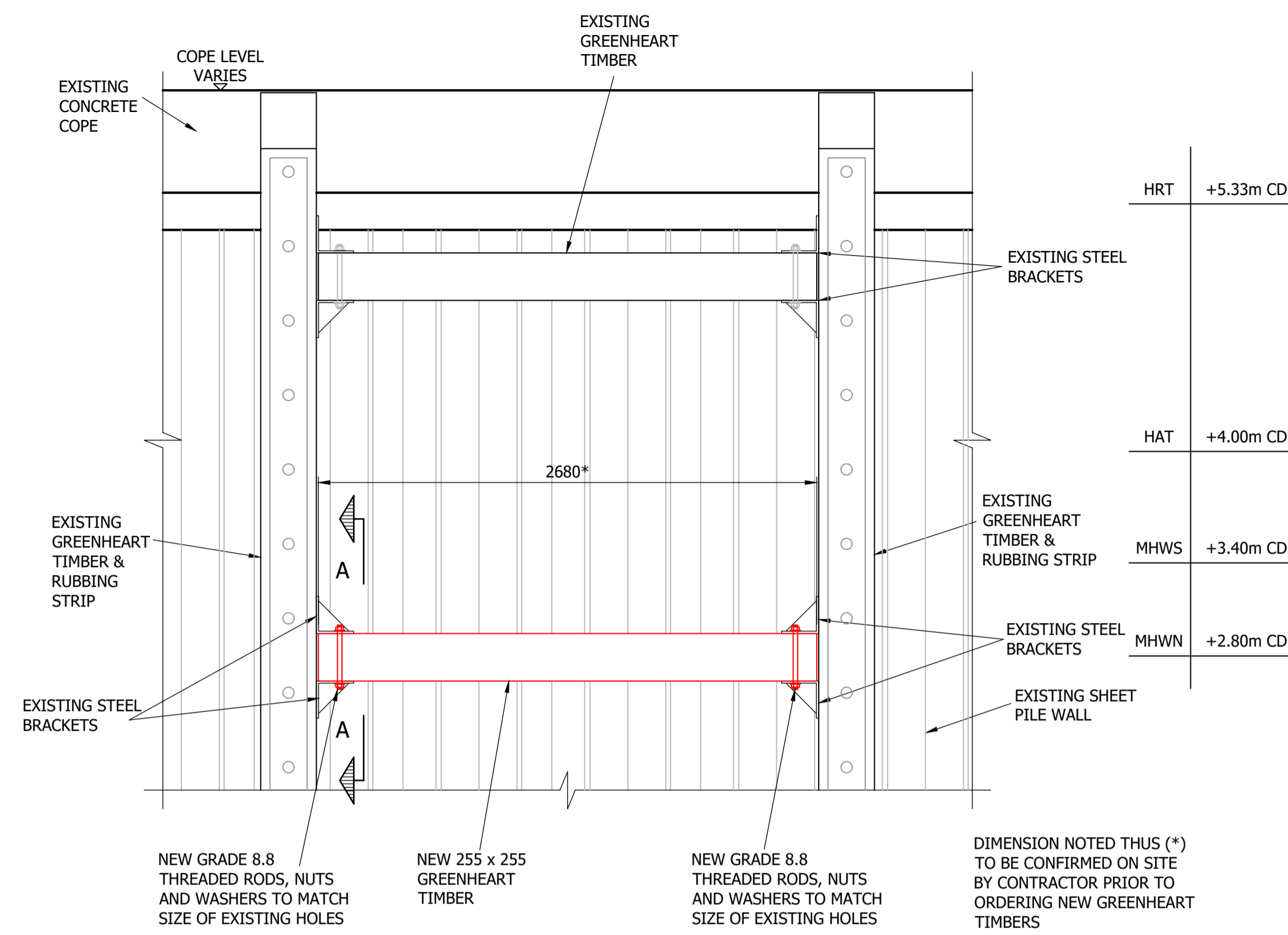


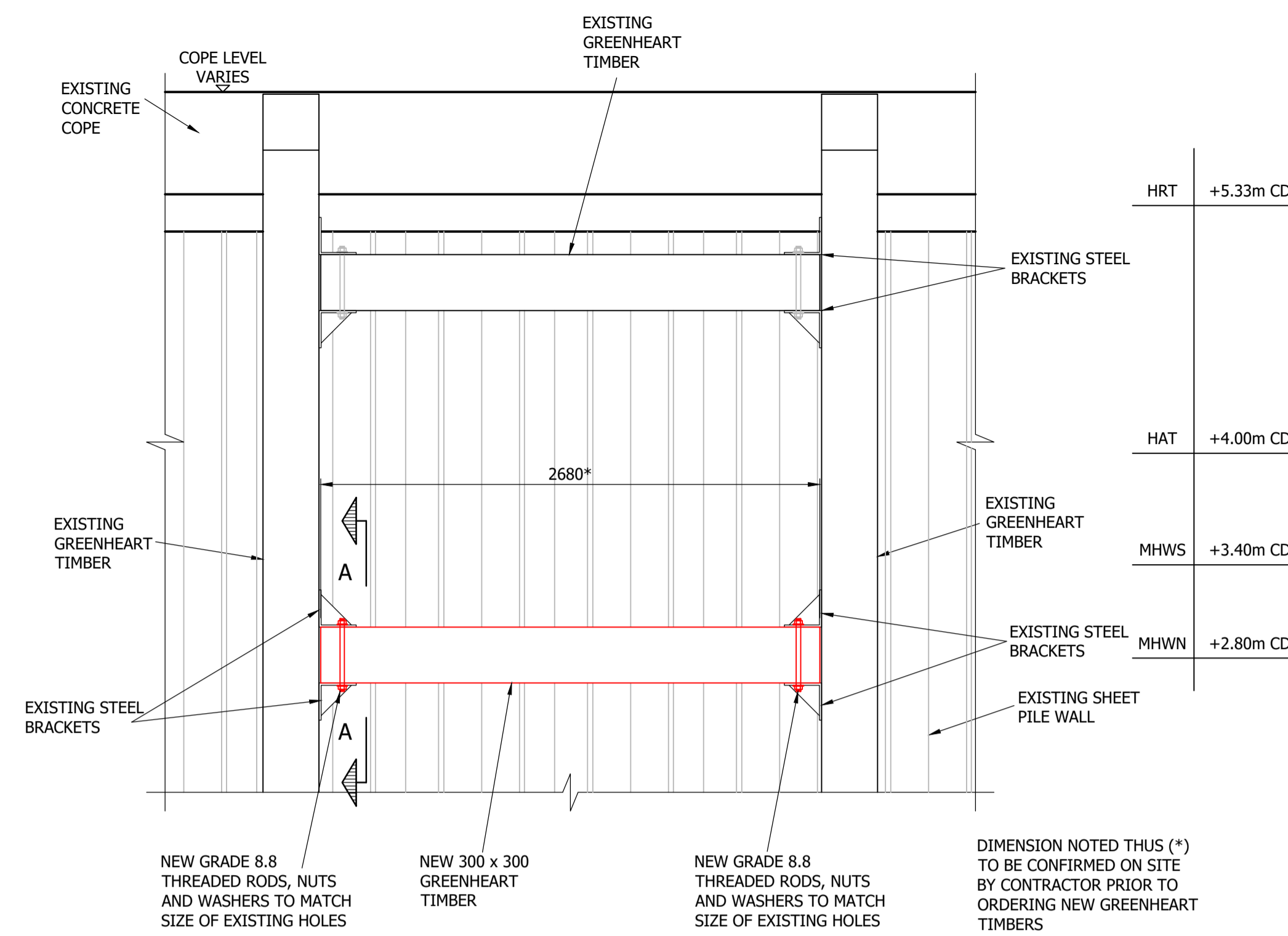
NOTES

1. FOR NOTES REFER TO ARCH HENDERSON DRAWING NUMBER 235053/002.
2. FOR LOCATIONS OF TIMBER REPAIRS REFER TO ARCH HENDERSON DRAWING NUMBER 235053/001.



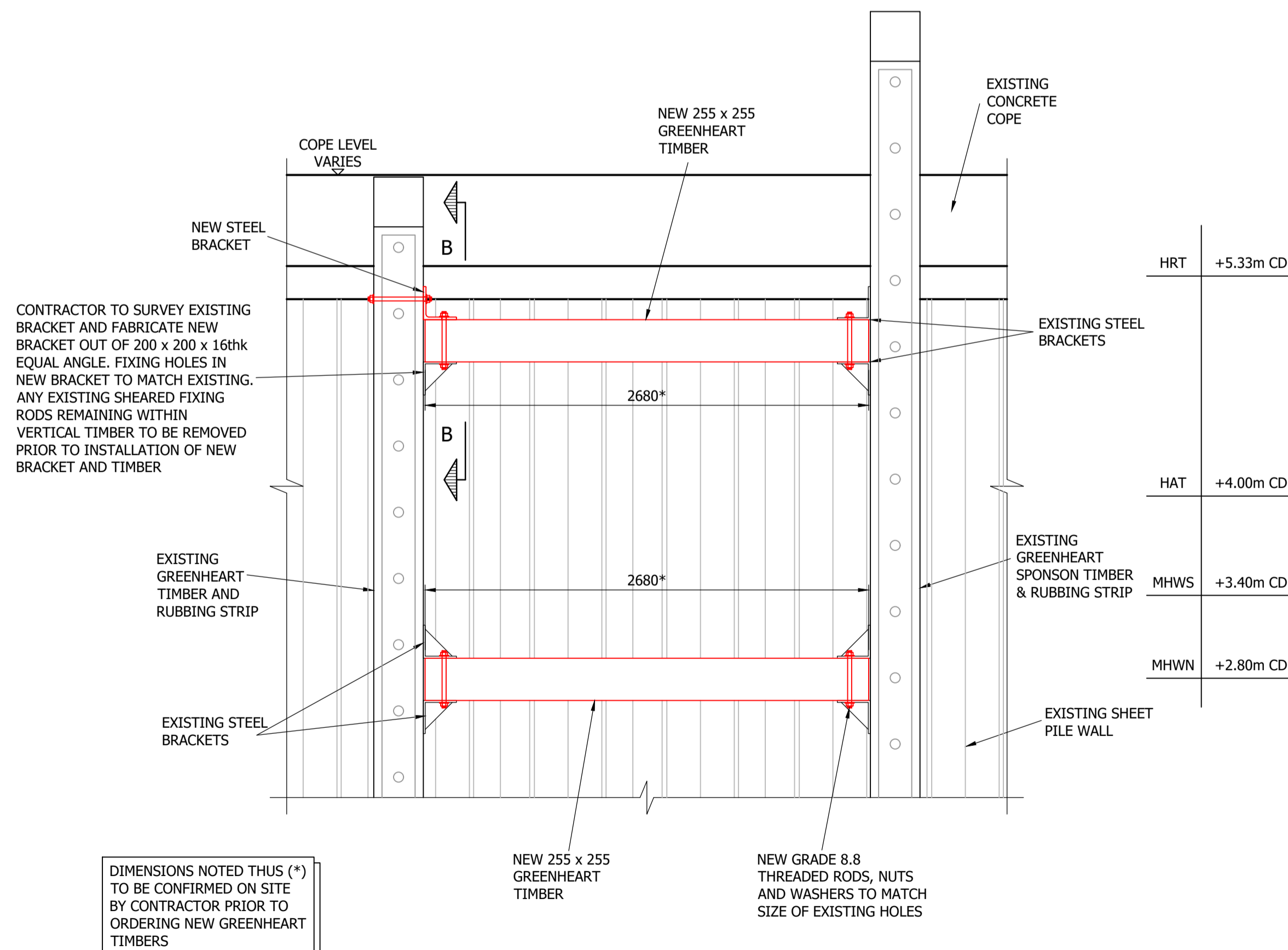
ELEVATION ON MISSING TIMBERS ch178 TO ch181

SIMILAR DETAIL AT THE FOLLOWING 2 No. LOCATIONS ch214 TO ch217 AND ch233 TO ch236
SCALE 1 : 25



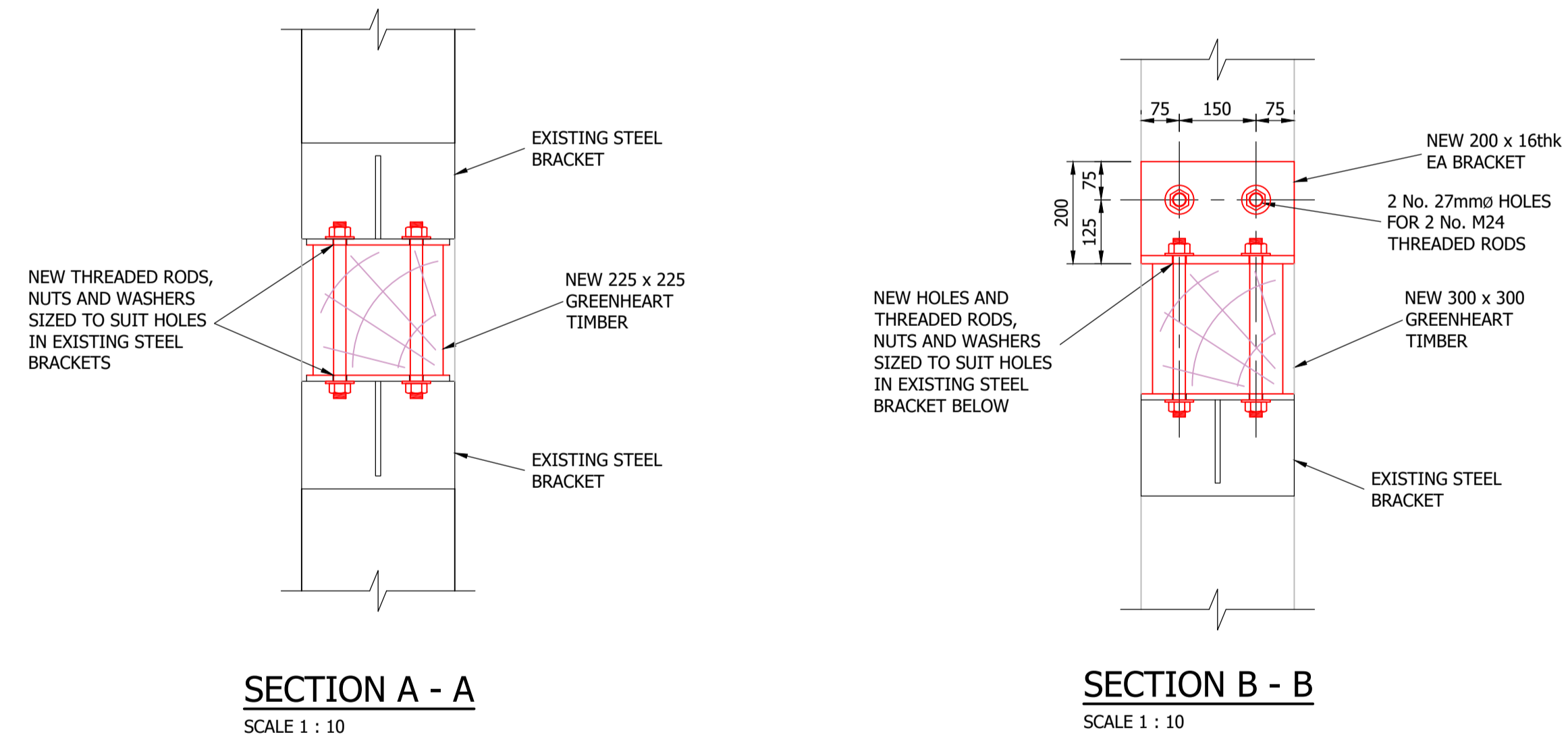
ELEVATION ON MISSING TIMBERS ch254 TO ch257

SIMILAR DETAIL AT THE FOLLOWING 2 No. LOCATIONS ch261 TO ch264 AND ch265 TO ch268
SCALE 1 : 25



ELEVATION ON MISSING TIMBERS ch203 TO ch206

SCALE 1 : 25



SECTION A - A

SCALE 1 : 10

SECTION B - B

SCALE 1 : 10

REV	DATE	REVISION DESCRIPTION	DRN	VER
THIS DRAWING IS COPYRIGHT © DO NOT SCALE FROM THIS DRAWING.				

Arch Henderson 1919

Civil Engineers
Structural Engineers
Principal Designers
Architects
Geotechnical services
Environmental services

142 St. Vincent Street, Glasgow G2 5LA.
Tel : 0141 227 3060 - Fax : 0141 248 9542
www.arch-henderson.co.uk - email : glasgow@arch-henderson.co.uk

Offices in : Aberdeen, Dundee, Falkland Islands, Glasgow, Inverness, Lewick, Southampton, Straness and Thurso

PROJECT :
**INVERCLYDE COUNCIL
GREENOCK WATERFRONT REMEDIAL WORKS**

TITLE :
**TYPICAL TIMBER REPAIR DETAILS
SHEET 1 OF 2**

DRAWN : W.J.	DATE : 10/11/2023	VERIFIED : H.D.	APPROVED : M..S.
SCALE : (A1) AS SHOWN @ A1		DRAWING STATUS : TENDER	

DRAWING No : 235053/004	REV : /
----------------------------	------------