

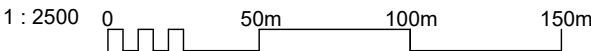
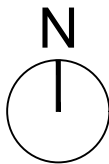
Note to Designers and Contractors

Under the CDM2015 regulations BSC has sought to eliminate or reduce risks where possible as part of the design process.

Significant residual risks, or areas of work that require special attention during construction, which have been identified by BSC, are indicated on project drawings by the following symbol

It is anticipated that other designers and contractors will co-operate to identify any potential construction hazards and to eliminate them where possible.

Measures to minimise residual hazards will be reviewed on a regular basis.



REV	DATE	DESCRIPTION	DRN
-----	------	-------------	-----

Bracewell Stirling CONSULTING

5 Ness Bank, Inverness, IV2 4SF 01463 233760
Unit 19, Scion House, Stirling University Innovation Park, Stirling FK9 4NF 01786 232777
8 High Street, Oban, PA34 4BG 01631 359054

MOORINGS APPLICATION
AT KILCHOAN
ESTATE

MOORING DRAWING

SCALE:	1:2500	DRAWN:	--
PAPER SIZE:	A3	DATE:	Aug 2025
DWG No.	5294-02-200	REV.	-