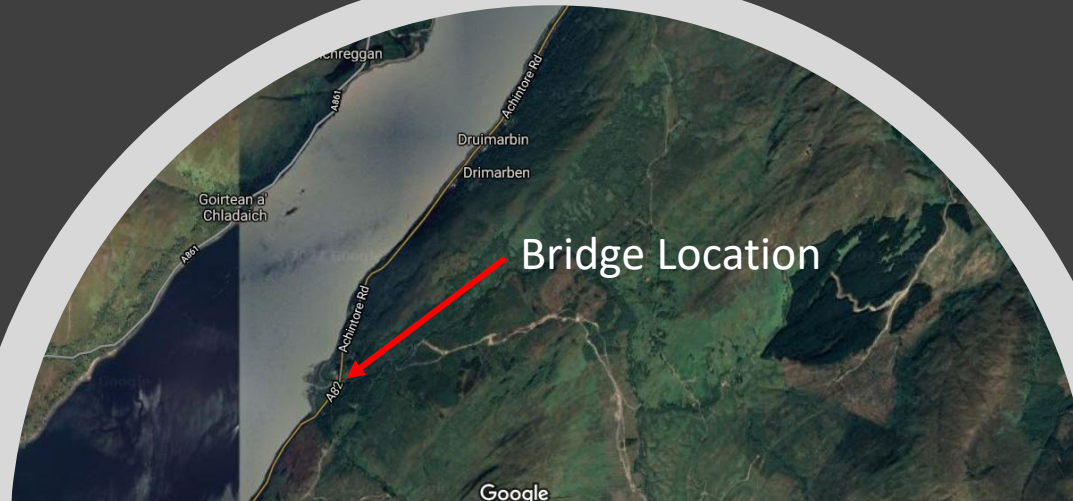




A82 960 Kiachnish Scour Works Presentation Slides

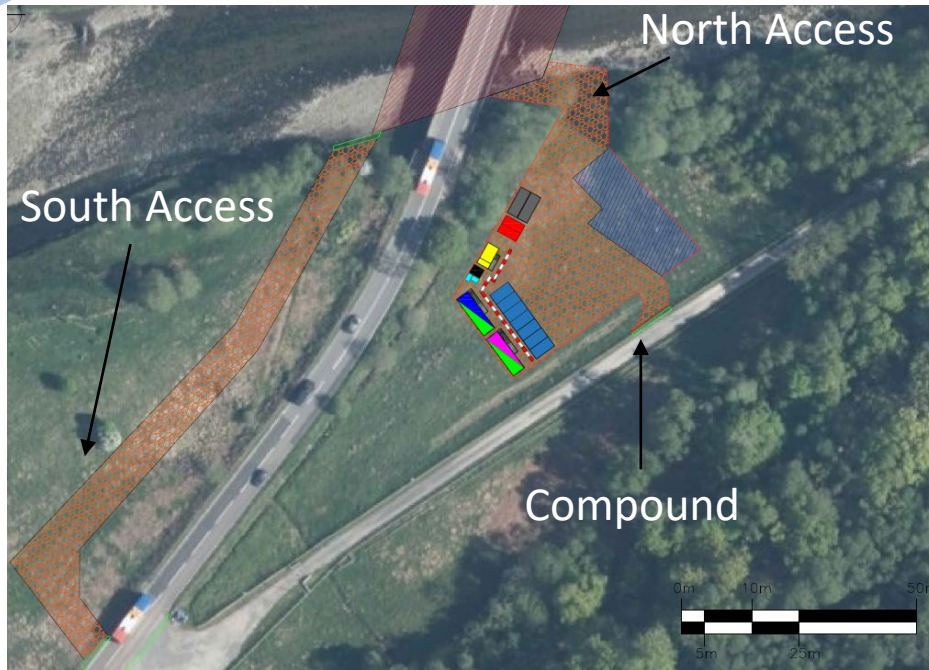


A82 960 Kiachnish Scour Works – Construction Sequence

Phasing - Construction period: 14 Weeks

- 0 Site Mobilisation & Traffic management
- 1 Phasing Overview
- 2 Dam Installation and Main Works Overview
- 3 Miscellaneous & Site Demobilisation





- Welfare facilities include 32ft Office, 2no. Canteen for distancing and Drying Room
- Access to main compound from private road off A82. Consent to be agreed.
- Access off A82, opposite of compound to access the West side of the structure.



- Single Lane closure constructing temporary access road to South side of the structure.
- Traffic management required for 1 week during site setup and 1 week during demobilisation.
- Traffic management section to span across private road access, therefore 3-way lights will be required

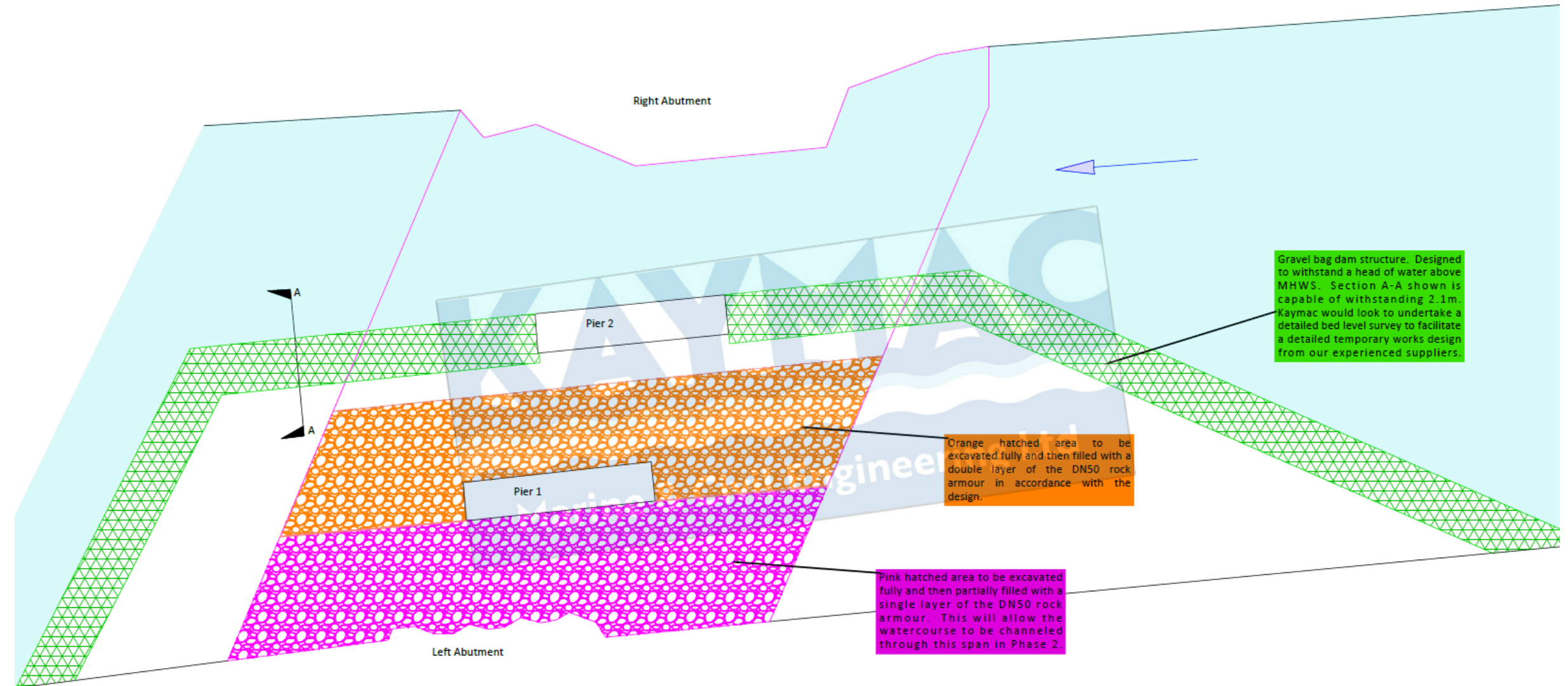


Phasing Overview

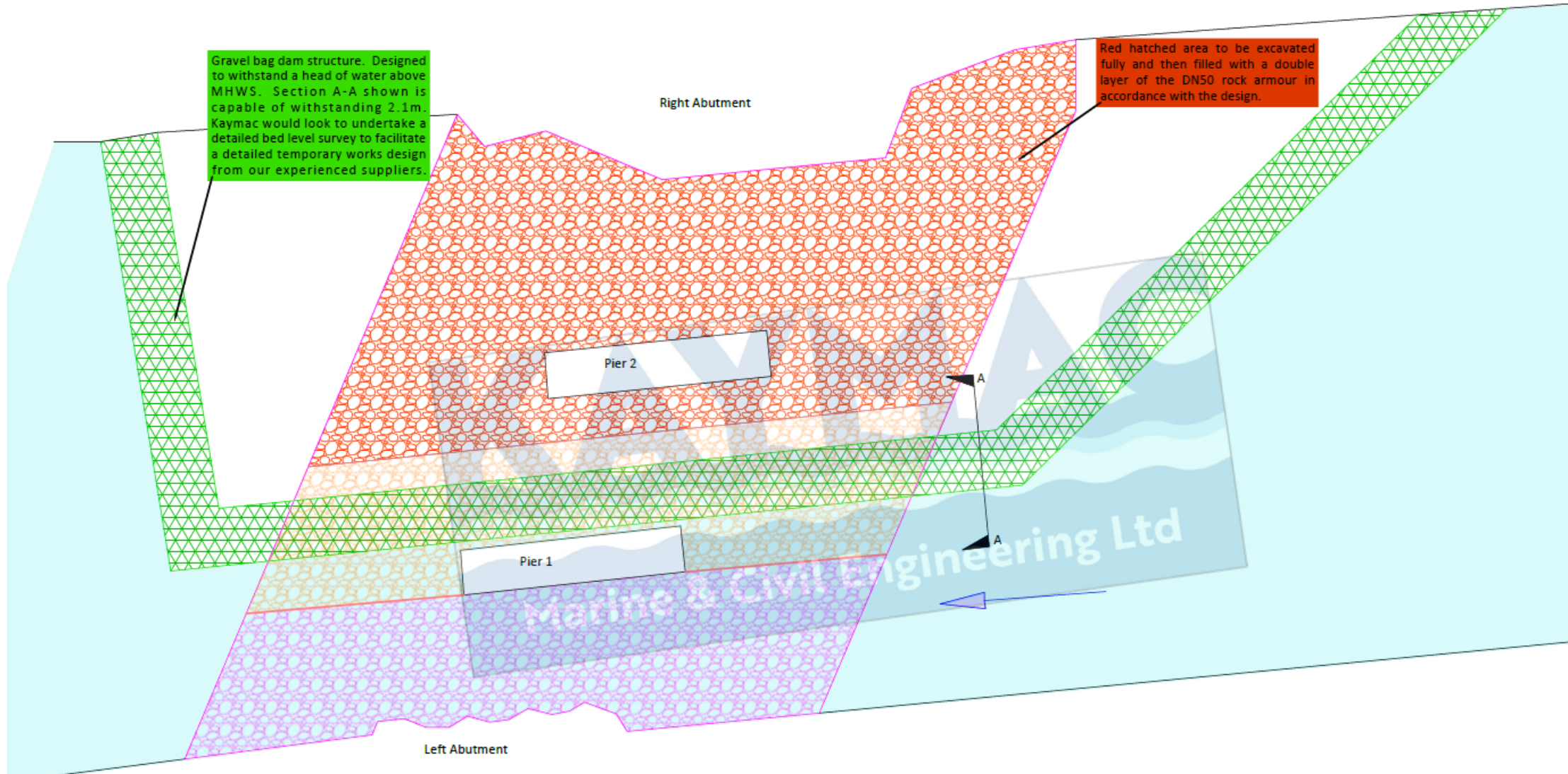
- Set up traffic management
- Form access roads and set up compound
- Install dam system Phase 1(dry span)
- Dig to formation level Phase 1
- Install mattress Phase 1
- Install gabion stone Phase 1
- Regrade embankment North
- Carry out concrete repairs Phase 1
- Install dam system Phase 2
- Dig to formation level Phase 2
- Install mattress Phase 2
- Install gabion stone Phase 2
- Regrade embankment South
- Carry out concrete repairs Phase 2
- Install dam system Phase 3
- Dig to formation level Phase 3
- Install mattress Phase 3
- Install gabion stone Phase 3
- Carry out concrete repairs Phase 3
- Remove access roads and demob



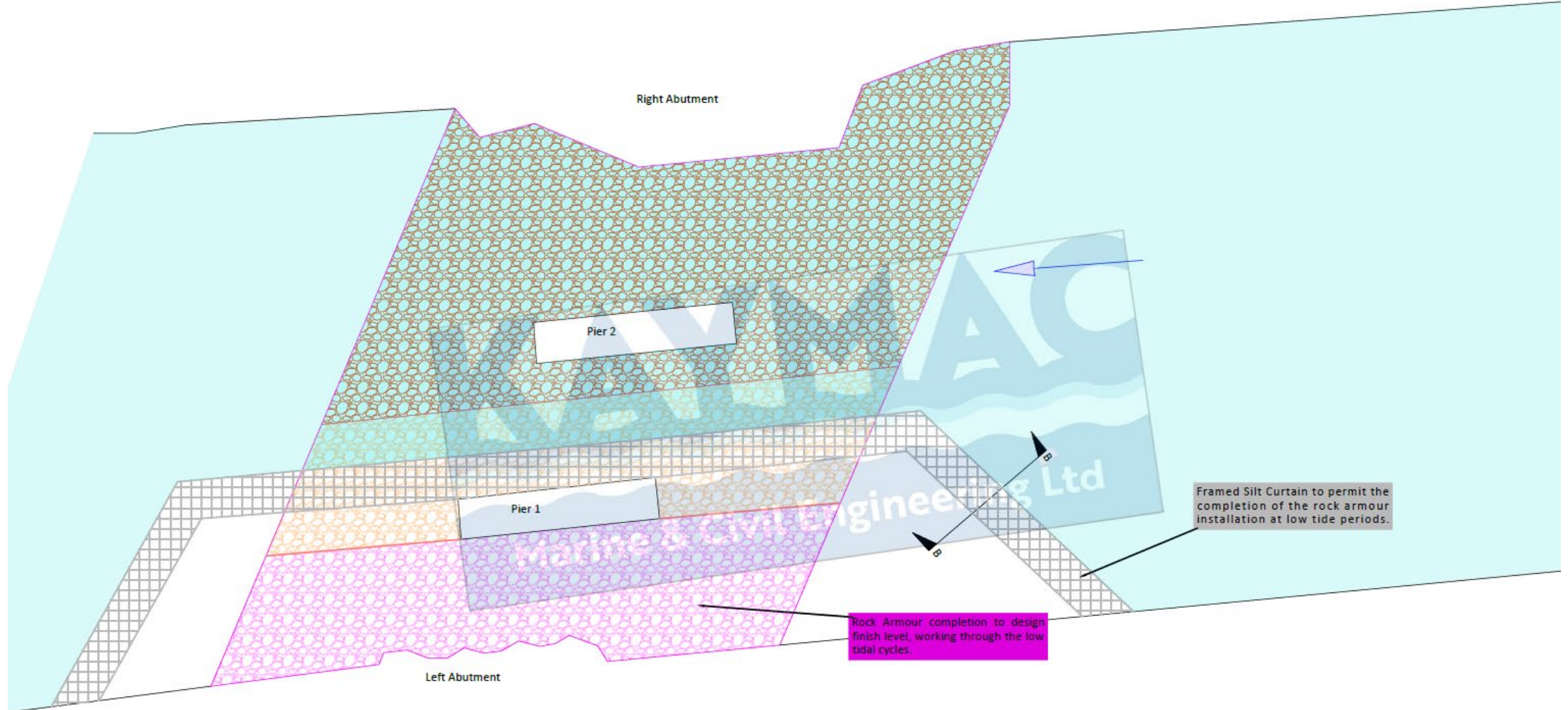
Dam Installation Phase 1



Dam Installation Phase 2



Dam Installation Phase 3



Demobilisation Phases

- Remove dam & pump system
- Remove access roads and hardstanding
- Set up traffic management
- Replace fencing
- Tree planting
- Reinststate/improve private access road



- Sign off completed contracted work with BEAR engineer
- Demobilise Site (Welfare collected and final Site tidy)
- Compile and issue handback file to BEAR Scotland

ANY QUESTIONS?

