

COPYRIGHT, DESIGNS AND PATENTS ACT 1988  
 This drawing may not be reproduced, copied or  
 the Executive Chief Officer of Infrastructure &  
 Environment.  
 © THE HIGHLAND COUNCIL

**Notes**  
 © Crown copyright and database rights 2021 OS  
 100026088. You are granted a non-exclusive,  
 Licensed Data for non-commercial purposes for  
 the period during which The Highland Council  
 sub-licence, distribute, sell or otherwise make  
 available the Licensed Data to third parties in any  
 form or by any means, provided the terms of this  
 licence shall be reserved to OS.

Site boundary



Revision Details

Rev	By	Check	Date

**The Highland Council**  
**Comhairle na Gàidhealtachd**

**INFRASTRUCTURE &  
 ENVIRONMENT**  
 PROJECT DESIGN UNIT  
 Osprey House  
 Alness Point Business Park  
 Alness IV17 0UP  
 E-Mail : high.buchanan@highland.gov.uk

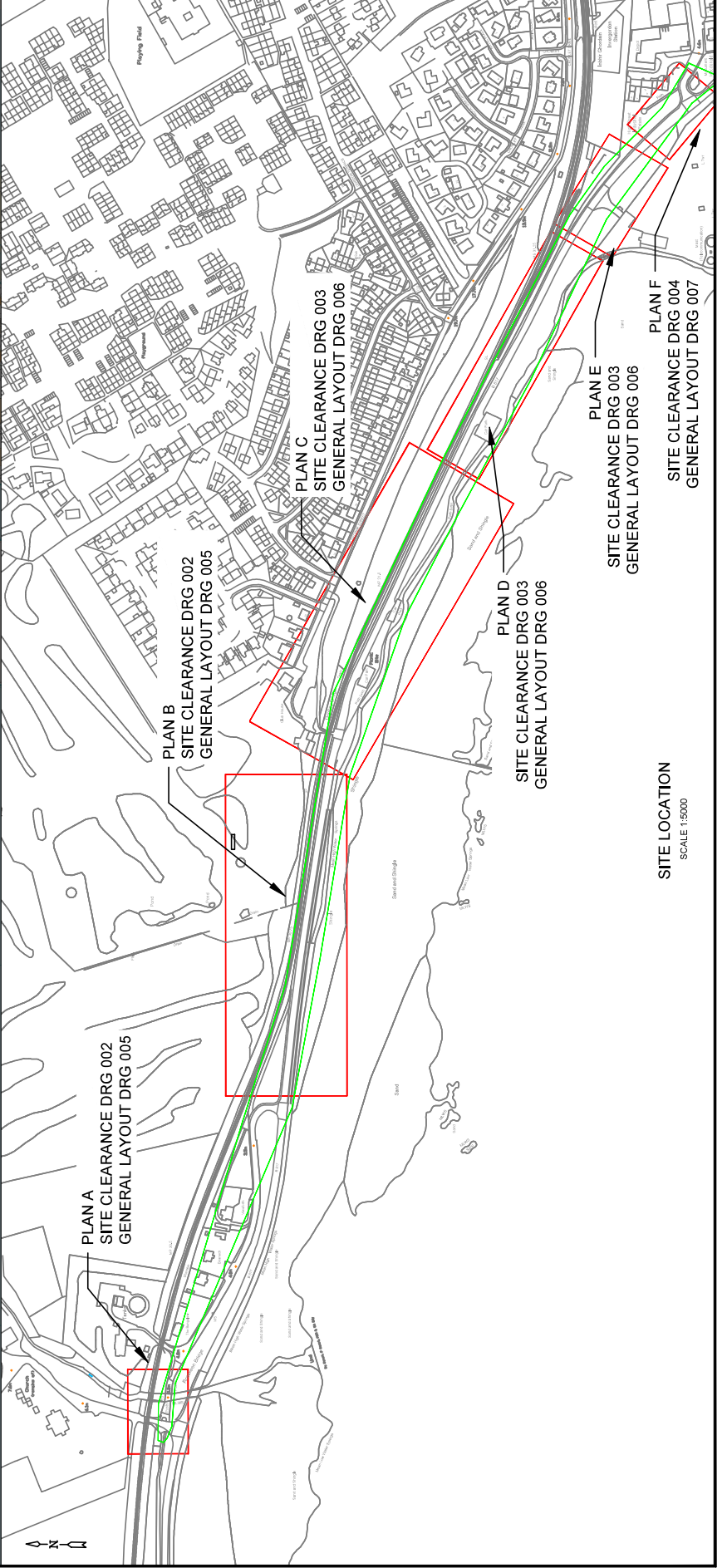
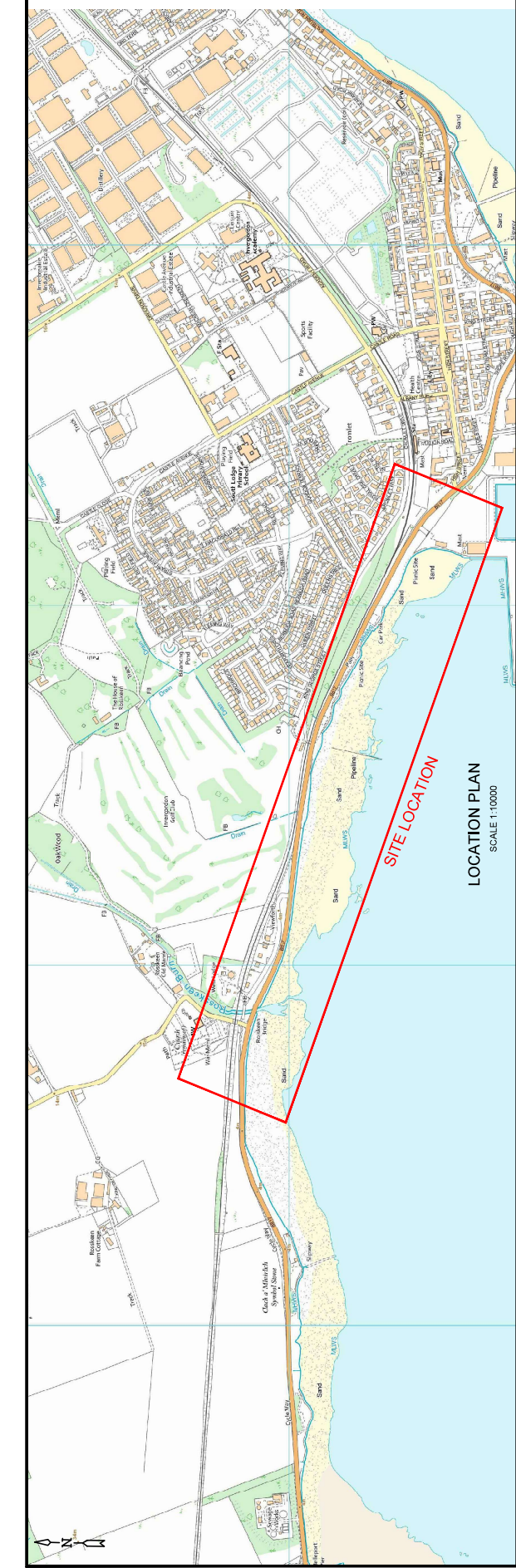
Project  
 ROSSKEEN TO INVERGORDON  
 ACTIVE TRAVEL IMPROVEMENTS

Title  
 LOCATION PLAN

Scale (at A3)

Drawn	JC	Date	14/10/2025
Checked	HB	Date	14/10/2025

Project No. 200319  
 Drawing No. 001 Rev. 0



This drawing may not be reproduced, copied or used in any way without the written permission of the Executive Officer of Infrastructure & Environment.  
 © THE HIGHLAND COUNCIL

**Notes**  
 1. Prepare pits for guardrail foundations.  
 2. Excavate and remove kerbing.  
 3. Remove existing bollards (and 2).  
 4. Excavate in preparation for new gully.  
 5. Remove gully.  
 6. Excavate and remove kerbing.  
 7. Excavate and remove kerbing.  
 8. Excavate and remove kerbing.  
 9. Excavate and remove kerbing.  
 10. Excavate and remove kerbing.  
 11. Excavate and remove kerbing.  
 12. Excavate and remove kerbing.  
 13. Excavate and remove kerbing.  
 14. Excavate and remove kerbing.  
 15. Excavate and remove kerbing.  
 16. Excavate and remove kerbing.  
 17. Excavate and remove kerbing.  
 18. Excavate and remove kerbing.  
 19. Excavate and remove kerbing.  
 20. Excavate and remove kerbing.  
 21. Excavate and remove kerbing.  
 22. Excavate and remove kerbing.  
 23. Excavate and remove kerbing.  
 24. Excavate and remove kerbing.  
 25. Excavate and remove kerbing.  
 26. Excavate and remove kerbing.  
 27. Excavate and remove kerbing.  
 28. Excavate and remove kerbing.  
 29. Excavate and remove kerbing.  
 30. Excavate and remove kerbing.  
 31. Excavate and remove kerbing.  
 32. Excavate and remove kerbing.  
 33. Excavate and remove kerbing.  
 34. Excavate and remove kerbing.  
 35. Excavate and remove kerbing.  
 36. Excavate and remove kerbing.  
 37. Excavate and remove kerbing.  
 38. Excavate and remove kerbing.  
 39. Excavate and remove kerbing.  
 40. Excavate and remove kerbing.  
 41. Excavate and remove kerbing.  
 42. Excavate and remove kerbing.  
 43. Excavate and remove kerbing.  
 44. Excavate and remove kerbing.  
 45. Excavate and remove kerbing.  
 46. Excavate and remove kerbing.  
 47. Excavate and remove kerbing.  
 48. Excavate and remove kerbing.  
 49. Excavate and remove kerbing.  
 50. Excavate and remove kerbing.  
 51. Excavate and remove kerbing.  
 52. Excavate and remove kerbing.  
 53. Excavate and remove kerbing.  
 54. Excavate and remove kerbing.  
 55. Excavate and remove kerbing.  
 56. Excavate and remove kerbing.  
 57. Excavate and remove kerbing.  
 58. Excavate and remove kerbing.  
 59. Excavate and remove kerbing.  
 60. Excavate and remove kerbing.  
 61. Excavate and remove kerbing.  
 62. Excavate and remove kerbing.  
 63. Excavate and remove kerbing.  
 64. Excavate and remove kerbing.  
 65. Excavate and remove kerbing.  
 66. Excavate and remove kerbing.  
 67. Excavate and remove kerbing.  
 68. Excavate and remove kerbing.  
 69. Excavate and remove kerbing.  
 70. Excavate and remove kerbing.  
 71. Excavate and remove kerbing.  
 72. Excavate and remove kerbing.  
 73. Excavate and remove kerbing.  
 74. Excavate and remove kerbing.  
 75. Excavate and remove kerbing.  
 76. Excavate and remove kerbing.  
 77. Excavate and remove kerbing.  
 78. Excavate and remove kerbing.  
 79. Excavate and remove kerbing.  
 80. Excavate and remove kerbing.  
 81. Excavate and remove kerbing.  
 82. Excavate and remove kerbing.  
 83. Excavate and remove kerbing.  
 84. Excavate and remove kerbing.  
 85. Excavate and remove kerbing.  
 86. Excavate and remove kerbing.  
 87. Excavate and remove kerbing.  
 88. Excavate and remove kerbing.  
 89. Excavate and remove kerbing.  
 90. Excavate and remove kerbing.  
 91. Excavate and remove kerbing.  
 92. Excavate and remove kerbing.  
 93. Excavate and remove kerbing.  
 94. Excavate and remove kerbing.  
 95. Excavate and remove kerbing.  
 96. Excavate and remove kerbing.  
 97. Excavate and remove kerbing.  
 98. Excavate and remove kerbing.  
 99. Excavate and remove kerbing.  
 100. Excavate and remove kerbing.

**KEY**

- GENERAL SITE CLEARANCE IN PREPARATION FOR REVISION WORKS
- EXISTING KERBING TO BE REMOVED
- REMOVE 150mm OF EXISTING TURF AND SOIL
- CHANGE MARKS
- EXISTING GULLY
- LENGTH OF EXISTING ROAD SYSTEM TO BE REMOVED
- STARTING EDGING KERB TO BE REMOVED
- AREA OF SURFACING TO BE REMOVED

Revision	Date	By	Check	Drawn	Scale

**The Highland Council**  
**Comhairle na Gàidhealtachd**

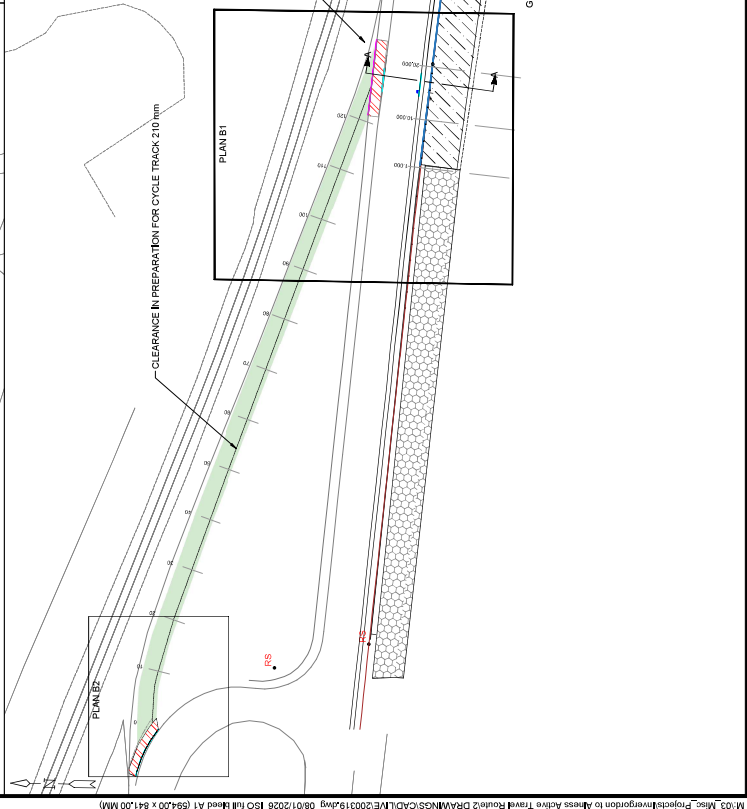
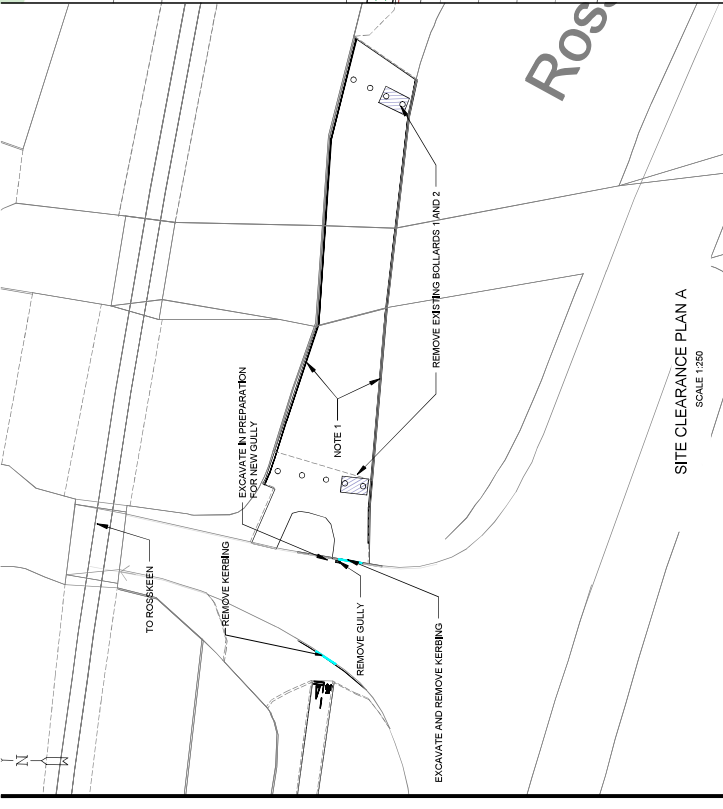
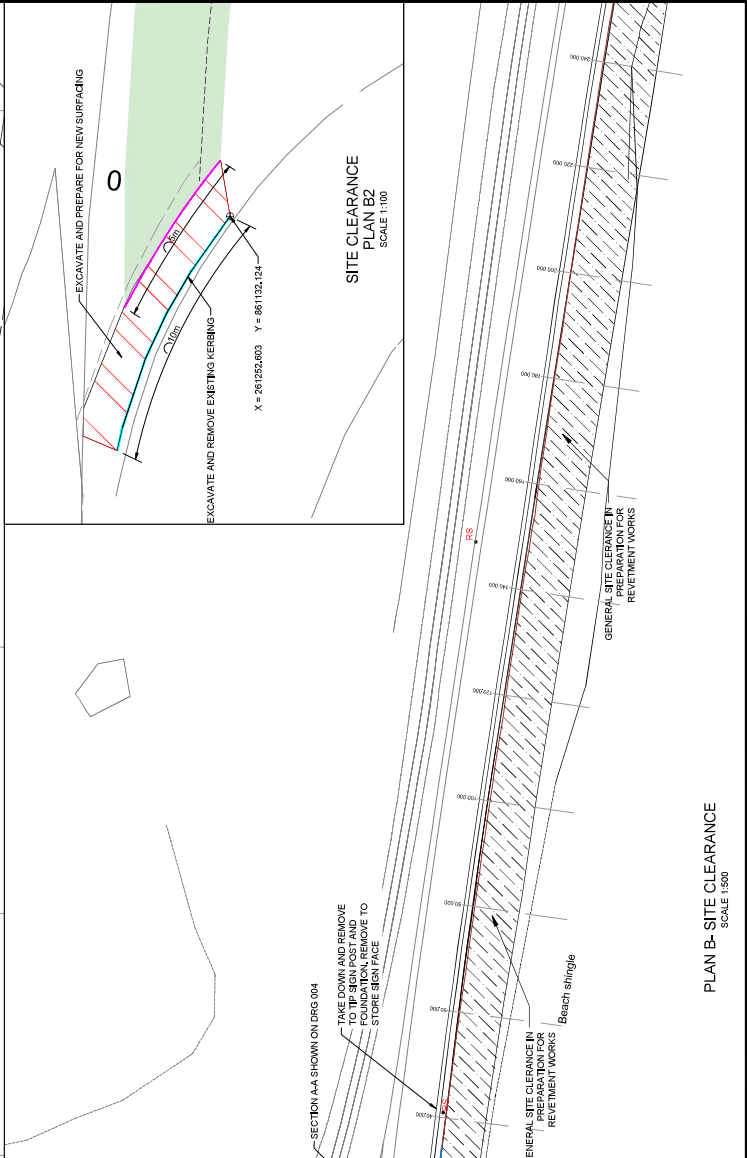
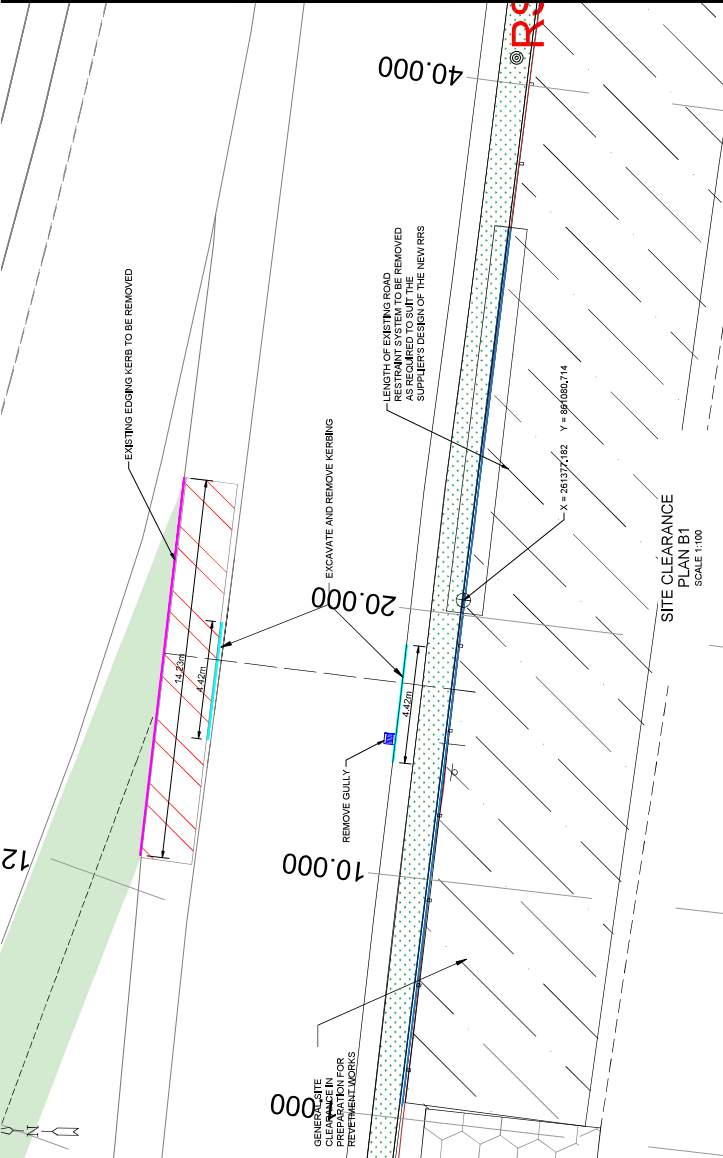
**INFRASTRUCTURE & ENVIRONMENT**

PROJECT DESIGN UNIT  
 1st Floor, 100  
 Alness Plant Business Park  
 Alness, IV17 0UP  
 E-Mail: [infra.en@highland.gov.uk](mailto:infra.en@highland.gov.uk)

PROJECT  
 ROSSKEEN TO INVERGORDON  
 ACTIVE TRAVEL IMPROVEMENTS

SHEET (OF 41)  
 SITE CLEARANCE 1 OF 2

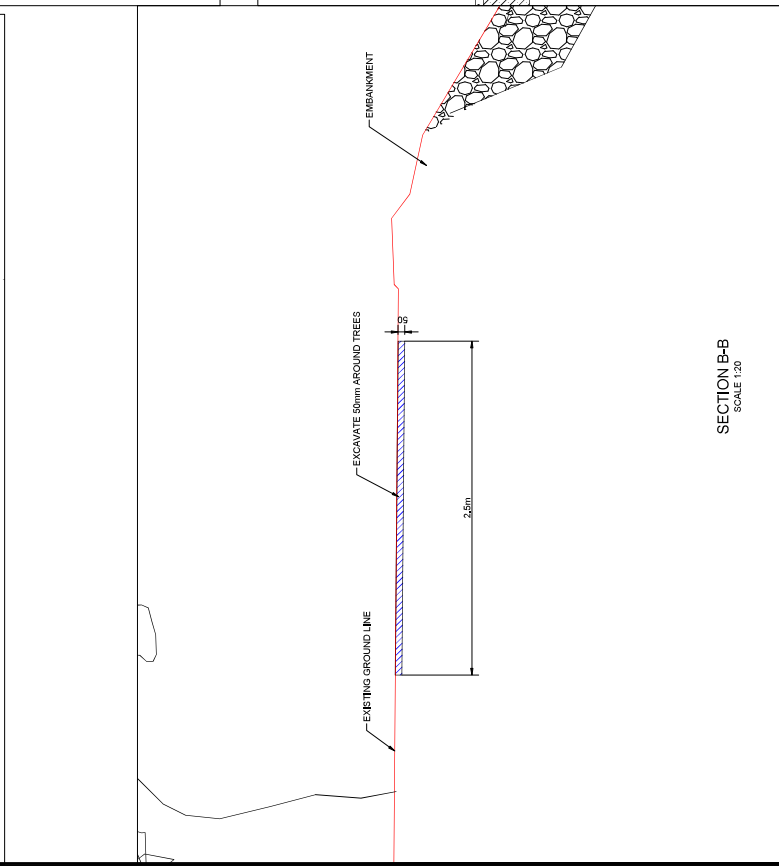
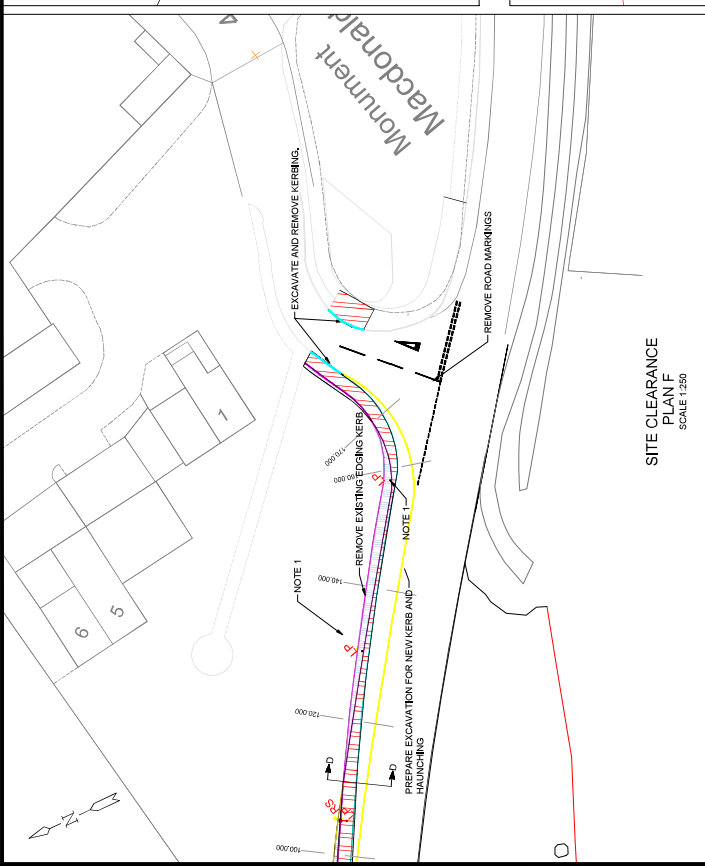
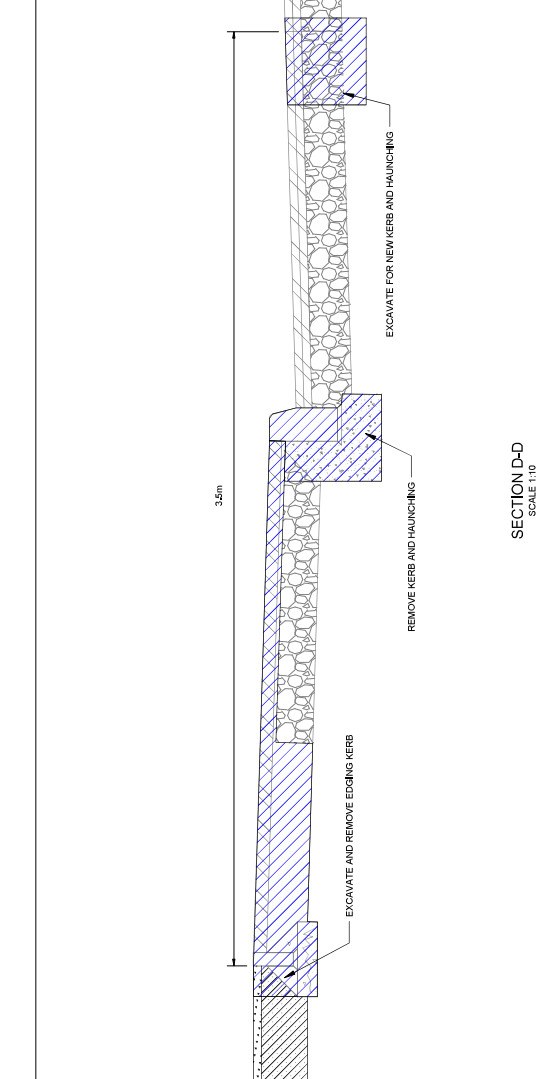
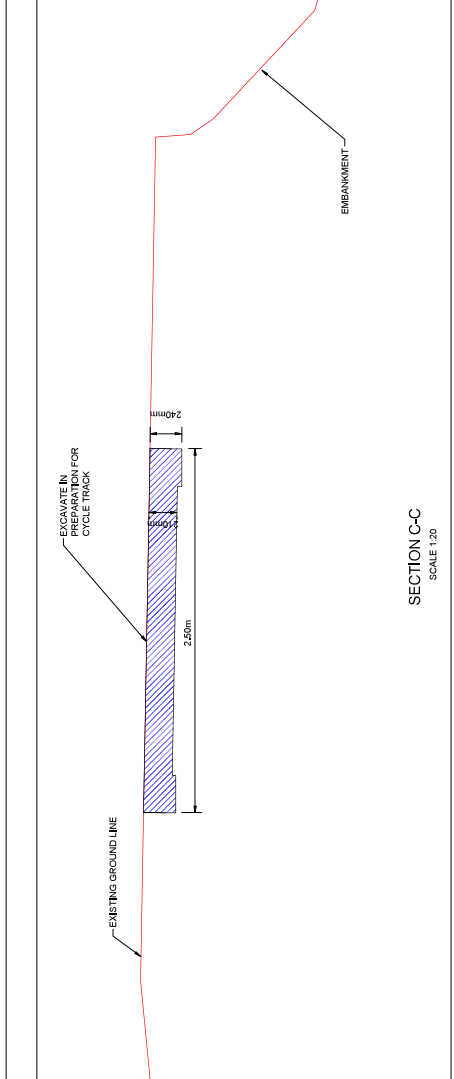
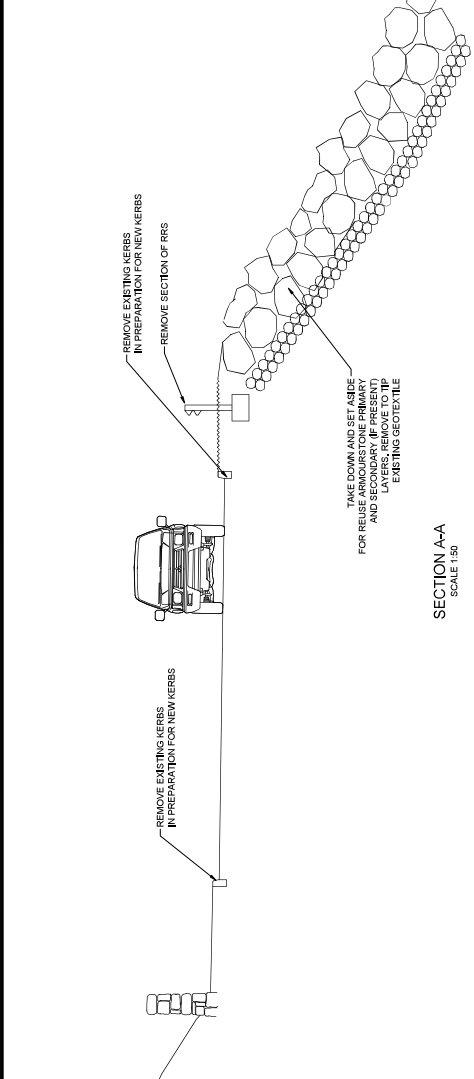
<b>As Shown</b>	
Drawn	IC
Checked	HB
Issue No.	200319
Drawing No.	002
Rev.	0





**Notes**  
 1. This drawing is a design and does not constitute a contract. It is the responsibility of the client to ensure that the design is suitable for the intended use. You are not permitted to copy, sub-license, distribute, or otherwise use this drawing or its contents in any form. Third party rights to enforce the terms of this license shall be reserved to OS.

- KEY**
- AREA OF SURFACING TO BE REMOVED
  - EXISTING KERBING TO BE REMOVED
  - CHANGING MARKS
  - REMOVE EXISTING EDGING KERB
  - REMOVE EXISTING NEW TRENCH FOR KERB
  - 1. TAKE DOWN AND REMOVE STORE LIGHTING COLUMN
  - CUT IN TO EXISTING EMBANKMENT
  - AREA TO BE REMOVED



**Revision Details**

Rev	Drawn	Checked	Date

**The Highland Council**  
**Comhairle na Gàidhealtachd**

**INFRASTRUCTURE & ENVIRONMENT**  
 PROJECT DESIGN UNIT  
 Olegry House  
 Achna Point Business Park  
 Achna, Invermoriston  
 E4441 | 01463 810000 | [infrastructure@highland.gov.uk](mailto:infrastructure@highland.gov.uk)

**Project**  
 ROSSKEEN TO INVERGORDON  
 ACTIVE TRAVEL IMPROVEMENTS

**Scale (if A1)**

**As Shown**

Drawn	Date
JC	24/11/2025

Checked	Date
JB	24/11/2025

**Project No.** 200319  
**Drawing No.** 004  
**Rev.** 0

**SECTION D-D**  
 SCALE 1:10

**SECTION B-B**  
 SCALE 1:20



**Notes**  
 1. This drawing is a design and shall be used in accordance with the terms of the contract. It is the responsibility of the client to ensure that the design is suitable for the intended use and that all necessary permissions are obtained.  
 2. The client shall be responsible for obtaining all necessary permissions and consents for the proposed works.  
 3. The client shall be responsible for ensuring that the proposed works are carried out in accordance with the design and specifications.  
 4. The client shall be responsible for ensuring that the proposed works are completed within the agreed programme of works.  
 5. The client shall be responsible for ensuring that the proposed works are completed to the satisfaction of the client.  
 6. The client shall be responsible for ensuring that the proposed works are completed in accordance with the relevant legislation and standards.  
 7. The client shall be responsible for ensuring that the proposed works are completed in accordance with the relevant health and safety legislation and standards.  
 8. The client shall be responsible for ensuring that the proposed works are completed in accordance with the relevant environmental legislation and standards.  
 9. The client shall be responsible for ensuring that the proposed works are completed in accordance with the relevant planning legislation and standards.  
 10. The client shall be responsible for ensuring that the proposed works are completed in accordance with the relevant building regulations and standards.  
 11. The client shall be responsible for ensuring that the proposed works are completed in accordance with the relevant fire safety legislation and standards.  
 12. The client shall be responsible for ensuring that the proposed works are completed in accordance with the relevant accessibility legislation and standards.  
 13. The client shall be responsible for ensuring that the proposed works are completed in accordance with the relevant equality legislation and standards.  
 14. The client shall be responsible for ensuring that the proposed works are completed in accordance with the relevant data protection legislation and standards.  
 15. The client shall be responsible for ensuring that the proposed works are completed in accordance with the relevant information rights legislation and standards.  
 16. The client shall be responsible for ensuring that the proposed works are completed in accordance with the relevant consumer protection legislation and standards.  
 17. The client shall be responsible for ensuring that the proposed works are completed in accordance with the relevant contract law legislation and standards.  
 18. The client shall be responsible for ensuring that the proposed works are completed in accordance with the relevant tort law legislation and standards.  
 19. The client shall be responsible for ensuring that the proposed works are completed in accordance with the relevant criminal law legislation and standards.  
 20. The client shall be responsible for ensuring that the proposed works are completed in accordance with the relevant civil law legislation and standards.

1. Install new gully, Reference to HCD on drawing 11
2. New Bench, Refer to Detail 11 on drawing 11
3. Place 10m, Refer to Detail 9 on drawing 11
4. Blazes to be planned proposed for contrast, Refer to Appendix 20.1.

**PROPOSED ELECTRICAL**

- TYPE 1/IV FOOTWAY - RESURFACE USING 200mm THICK AC10 SURFACE COURSE TO DETAIL SECTION 1-1 ON DRG 7.
- TYPE F/M FOOTWAY - RESURFACE WITH 400 CLEAN STONE, PAVED WITH 200mm x 200mm x 20mm SQUARE AND PARALLEL LAYING. RESURFACE AND COURSE, REFER TO DETAIL SECTION 3-3 AREA TO BE FILLED WITH CLASS SA TOPSOIL AND SEED.
- BUS LANY SURFACING APPENDIX 71 ON DRG 9 FOR DETAIL
- SHARED PATH SURFACING APPENDIX 71 ON DRG 9 FOR DETAIL
- BOL DOWNED IN RECREATION AREA, REFER TO DETAIL SECTION 1-1 ON DRG 11.12.

**CHANGE MARKS**

- LAMP POST TO BE REERECTED TO NEW LOCATION 500mm FROM VERGE

**The Highland Council**  
**Comhairle na Gàidhealtachd**

**INFRASTRUCTURE & ENVIRONMENT**  
 PROJECT DESIGN UNIT  
 Odey House  
 Alness Point Business Park  
 Alness, 14 001  
 PH20 1JG  
 E-MAIL: [infrastructure@highland.gov.uk](mailto:infrastructure@highland.gov.uk)

ROSSKEEN TO INVERGORDON  
 ACTIVE TRAVEL IMPROVEMENTS

Drawn	JC	Date	24/11/2025
Checked	JB	Drawn	24/11/2025
Project No.	200319		
Drawing No.	006	Rev.	0

