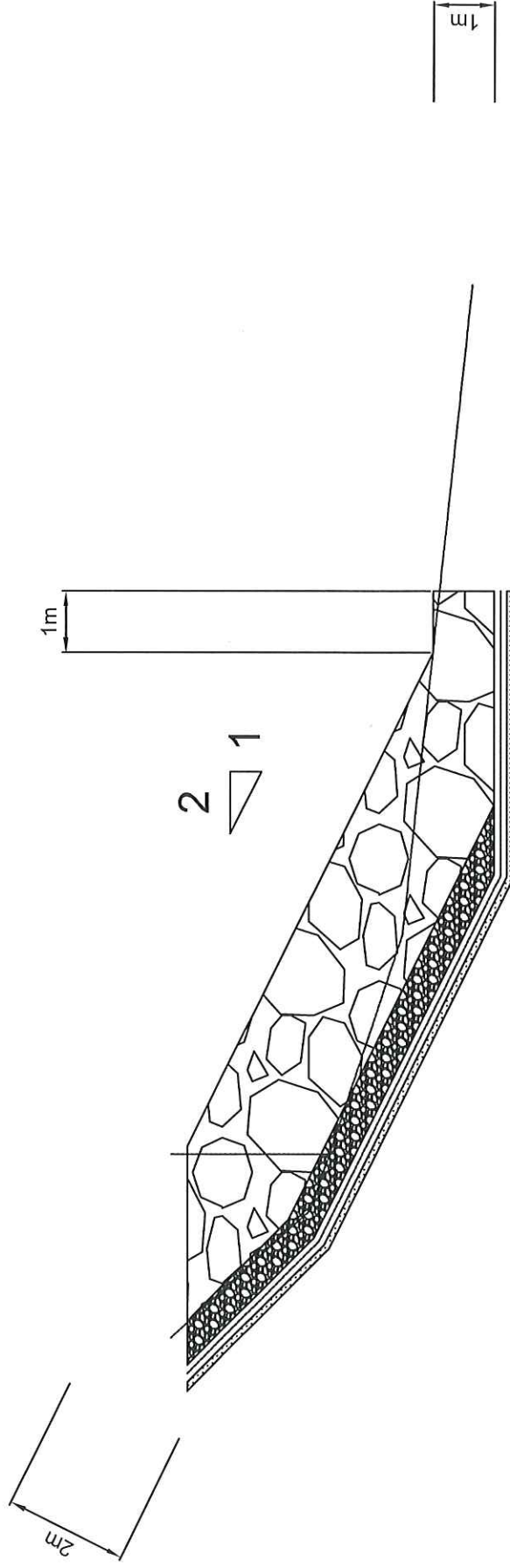
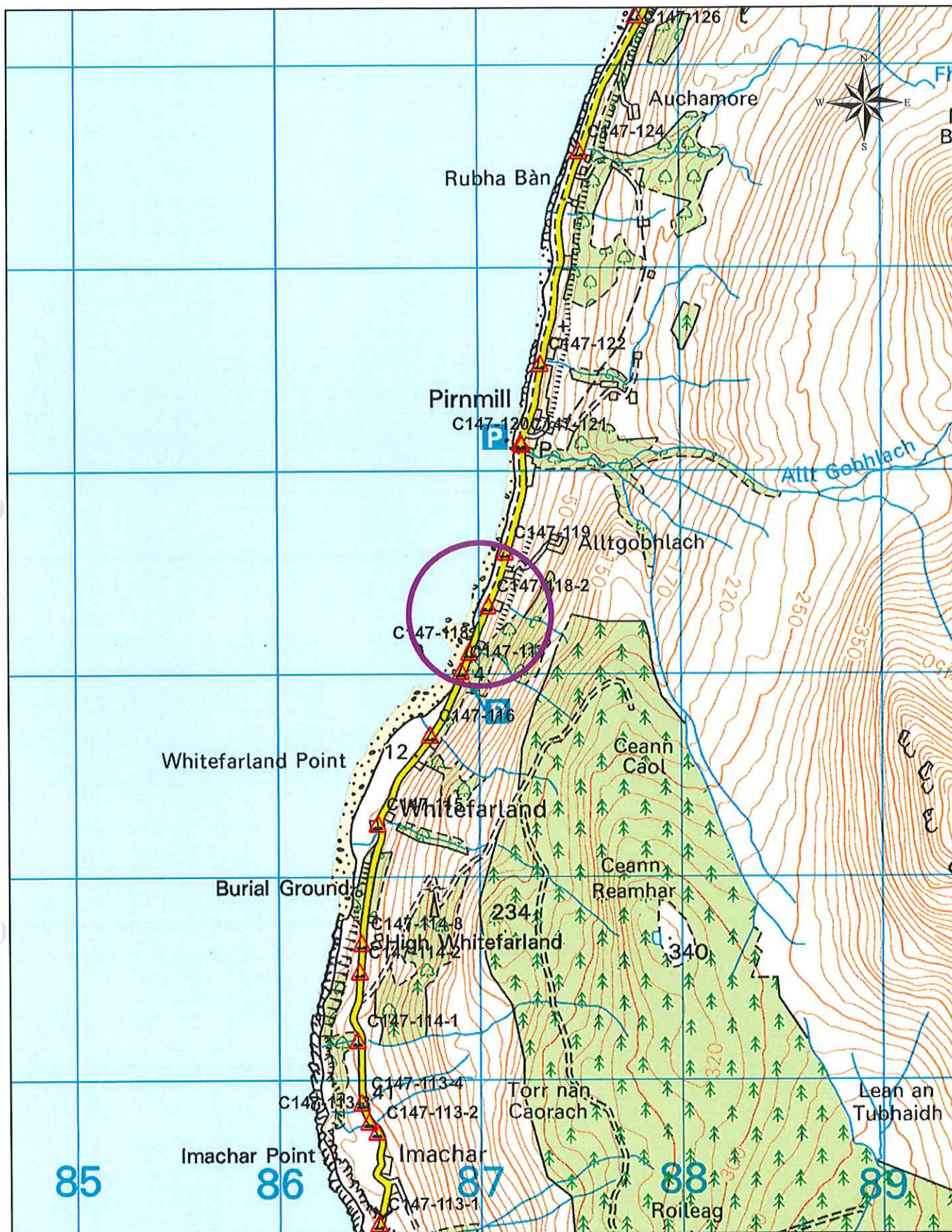



Pirnmill Armour Rock Section



Armour Rock 2m
Filter Rock 500mm
Geotextile ---
Sand 100mm

Dimensions in metres
Scale 1:100



 <p>North Ayrshire Council Commercial Services - Roads Cunninghame House, Irvine. KA12 8EE</p> <p>Head of Commercial Services R. McCutcheon</p>	<p>Coastal Protection Works Proposed Armour Rock Pirmill, Arran Location Plan (187012 E, 643277 N)</p>	<p>Date : 17/01/2019</p> <p>Scale : 1:25,000</p> <p>Drawing No. : Location Plan</p> <p>File No : Pirmill Coastal Protection</p>
<p>"This map is reproduced from the OS map by North Ayrshire Council with the permission of the Controller of Her Majesty's Stationery Office, © Crown copyright. Unauthorised reproduction infringes Crown Copyright and may lead to prosecution or civil proceedings. Licence Number: 100023393."</p>		

Outline Method Statement:-

Scope of Works:

The installation of a rock armour revetment as an extension to an existing rock armour revetment which will replace failed gabion baskets and replacement of washed out verge. This is to protect the Road asset for the community.

Location of Works:

South of Pirnmill on the C147 of the road network, Arran.

Site Work Sequence:

1. Enact traffic management, vehicular lane closure for safety zone.
2. Site to be made secure with temporary fencing.
3. Remove gabions.
4. Excavate for rock armour revetment construction.
5. Make up earthworks outline with excavated acceptable fill.
6. Lay sand layer to protect geotextile layer, cover 1:2 slope with a filter rock layer, which will also protect geotextile during armour rock placement
7. Place armour rock with 3 point lock..
8. Fill voids to beach level with previously excavated beach material.
9. Clear site on completion.

Hazards, Risks Assessments & Control Measures:

The work will involve working in or in the vicinity of coastal water and the Contractor should be aware of his responsibilities regarding pollution and the risk of prosecution by Marine Scotland if pollution occurs as a result of the works. In particular he should take care not to pollute the water with fuel or silt etc. Guidelines are to be adhered to.

A safety plan must be developed and approval prior to work commencing to address the following health, safety and welfare issues:

1. Working in the vicinity of utilities
 2. Working in or over water
 3. Working at height
 4. Facilities/ arrangements for welfare of the workforce
 5. Emergency procedures
 6. First aid
- Work Activity Risk Assessment:

Work Activity	Risk	Control Measures Required
Location and access	Vehicle accidents	Ensure appropriate traffic management is implemented including adequate arrangements for the uplift and delivery of materials to the site.
Pedestrian / Cycles movement and control	Accidents involving members of the public	Implement pedestrian / cycles management in accordance with Chapter 8 of the Traffic Signs Manual. Traffic lights and a lane or road closure will be required if any plant, vehicles or materials are required to be located on the carriageway or unloaded on the carriageway.
Welfare facilities		HSE Construction Information Sheet 59
Working in or above water	Slipping and injuring Drowning Contamination of watercourse	Appropriate PPE to be worn and suitable method of access down watercourse banking is to be employed. Work is <u>not</u> to be undertaken during periods of high water levels. No lone working. Employ suitable containment measures refer to guidance and inform Marine Scotland immediately of any significant incidents.
Working at height	Operatives falling causing injury Materials falling causing injury	Provide details of a safe system of work. Ensure all access equipment is in a good state of repair and appropriate for the work being undertaken. Ensure working area is kept tidy and materials are placed a suitable distance from openings. Appropriate PPE to be worn.
Manual handling	Personal injury, lacerations, strains.	Method statement to be provided. Operatives should have appropriate training in the lifting of heavy and awkward loads. Appropriate PPE to be worn. Use lifting aids where appropriate.
Plant and machinery	Injury, impact,	Disengage plant and machinery when unattended. Remove to safe area at meal times. Ensure equipment has been checked and is in good working order. Wear appropriate PPE. Use banksman as appropriate.
Confined Spaces	Vermin, Trapping, Suffocation	Safe entry procedures, lifting, moving.

Public Utility plans to be supplied.

Programme:

The works are to proceed at Late 2019.....

Health & Safety Requirements:

1. Operatives must have appropriate skills, knowledge, experience, and training. Proof of training will be requested from operatives on site, so operatives must carry their training cards. Details of certification of operatives and supervisory personnel on site, inclusive of first aiders shall be kept in the Health & Safety File on site.
2. A site induction must be provided to the operatives to confirm the nature of the work required, method statements and the health and safety procedures in place. Site operatives must sign to confirm that they have been inducted.
3. The site induction must confirm emergency procedures, including first aid and fire provisions.
4. Method statements, risks assessments and COSHH assessments must be on site and available to the workforce.
5. Mechanical lifting equipment required.
6. Plant and machinery certification to be kept in the Health & Safety File on site.
7. All plant to use a banksman where required.

PPE:

Appropriate PPE is to be worn as per site induction.

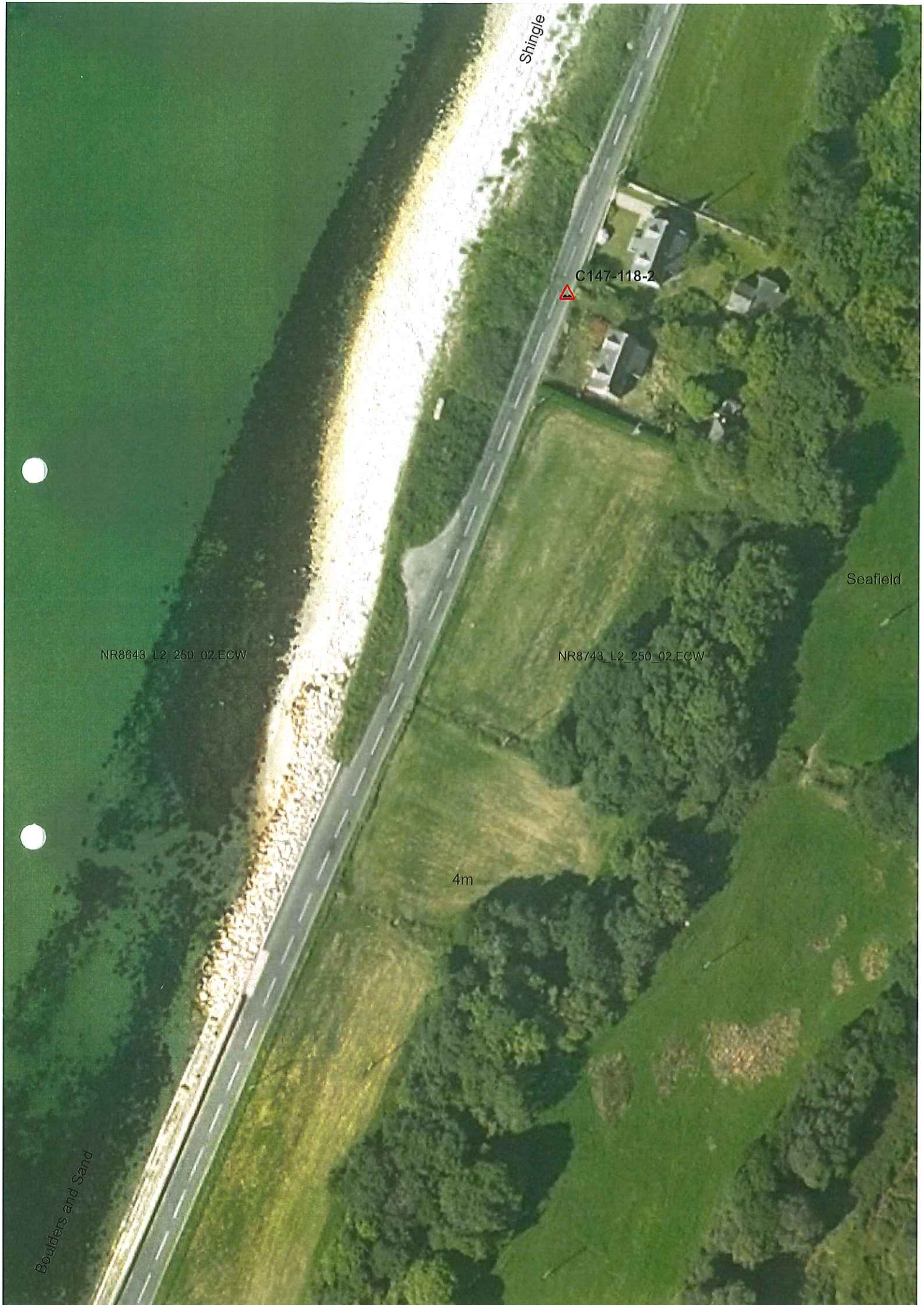
All workers are responsible for taking care of their PPE.

Environmental Risks & Control Measures:

Noise levels to be comply with Control of Noise and Vibration on Construction & Open Sites.

Waste Management:

The contractor removing waste off site requires to be a registered waste carrier.



Boulders and Sand

Shingle

NR8643_L2_250_02.ECW

NR8743_L2_250_02.ECW

4m

C147-118-2

Seafield

