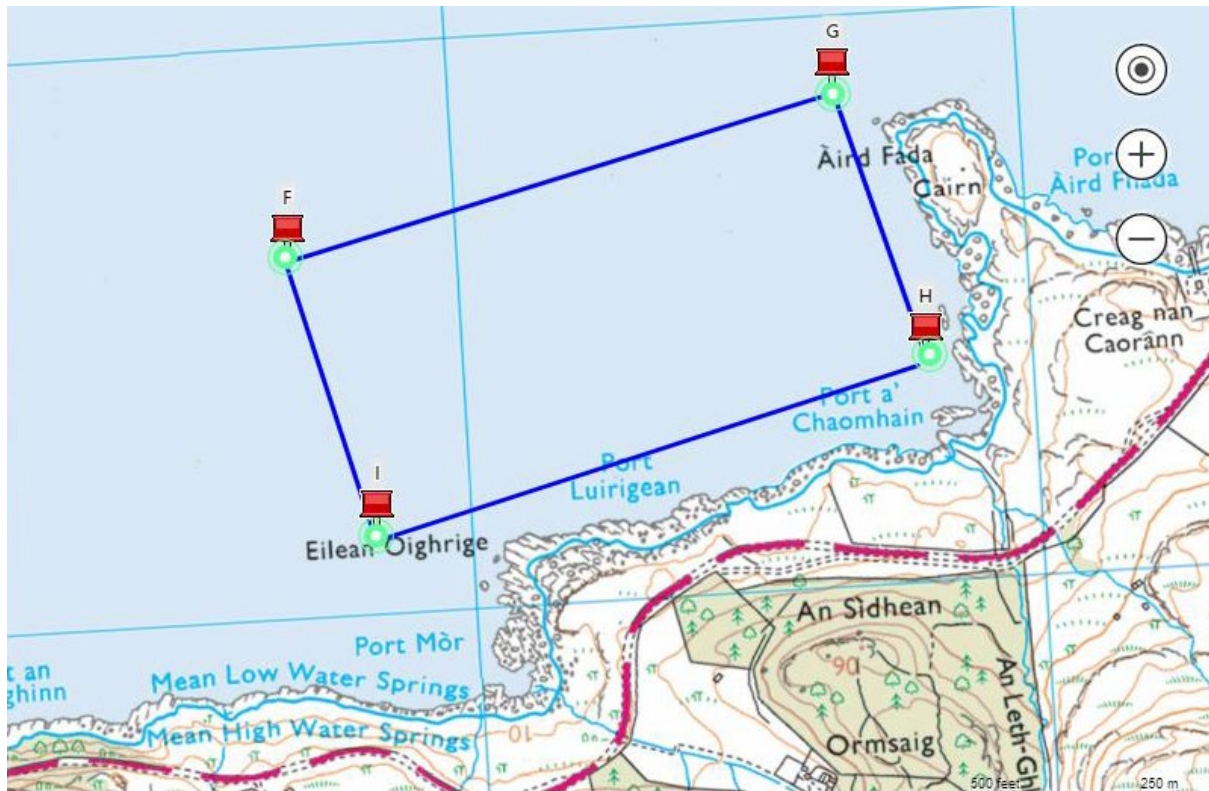


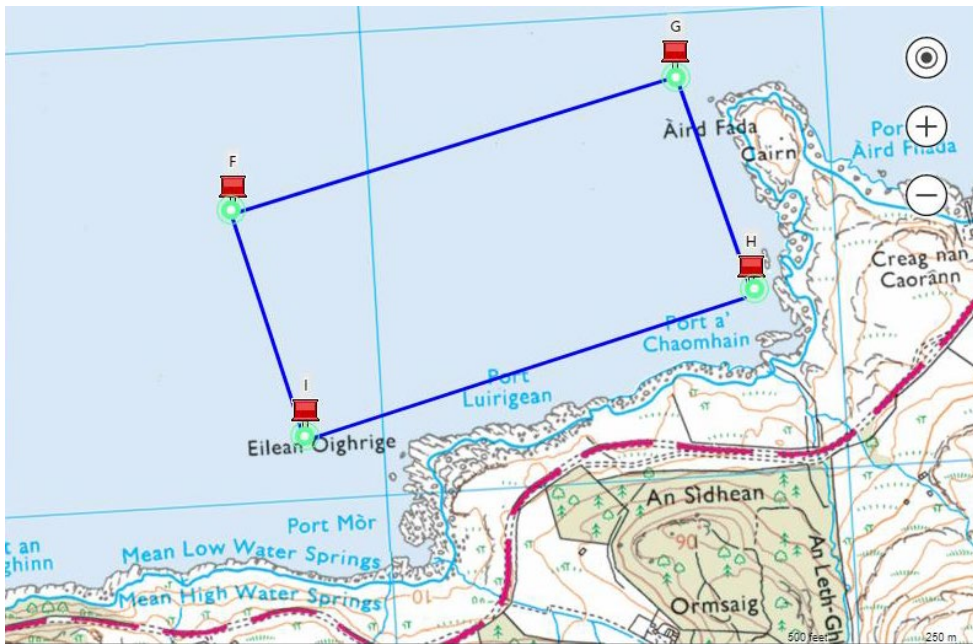
## Aird Fada site



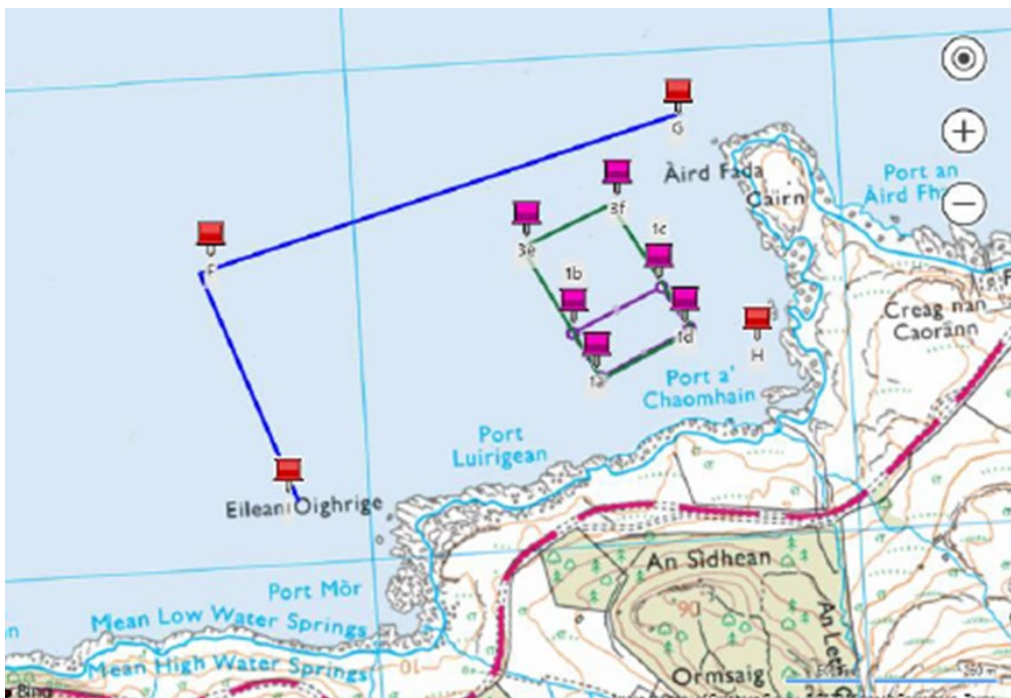
The potential site Aird Fada, is on the north coast of Ross of Mull at the entrance to Loch Scridain. The outer limits to the Aird Fada site are bounded by the Lat/Lon in the table below and can be seen at this [LINK](#).

Points	Grid Reference	Lat (dec deg)	Lon (dec deg)	N	Lat (dec min)	W	Lon (dec min)
<b>F</b>	NM 43702 24635	56.344458	-6.1492846	56	20.667	6	8.957
<b>G</b>	NM 44675 24868	56.347074	-6.1338136	56	20.824	6	8.029
<b>H</b>	NM 44810 24395	56.342904	-6.1311743	56	20.574	6	7.870
<b>I</b>	NM 43831 24142	56.340111	-6.1467243	56	20.407	6	8.803
<b>1a</b>	NM 44478 24361	56.342421	-6.1364973	56	20.545	6	8.190
<b>1b</b>	NM 44436 24455	56.343242	-6.1372751	56	20.595	6	8.237
<b>1c</b>	NM 44617 24534	56.344045	-6.1344266	56	20.643	6	8.066
<b>1d</b>	NM 44664 24442	56.343252	-6.1335844	56	20.595	6	8.015
<b>3e</b>	NM 44350 24637	56.344826	-6.1388322	56	20.690	6	8.330
<b>3f</b>	NM 44541 24711	56.345599	-6.1358174	56	20.736	6	8.149

**Aird Fada site** Points F,G,H & I are the outer limits of the licensed site.



**Aird Fada site** Point 1a, 1b, 1c & 1d are the 1<sup>st</sup> phase deployment points showing the layout of the actual 2 Ha Seaweed Farm and points 3e & 3f are the 2<sup>nd</sup> phase deployment points to give a 6 Ha Seaweed Farm .



Anchor points holding the lines will stretch out underwater 50m to 100m from the Seaweed Farm depending on depth. The Seaweed Farm will be positioned to ensure the anchors do not interact with any submerged Rocky Reefs, settling in soft pelagic mud instead.