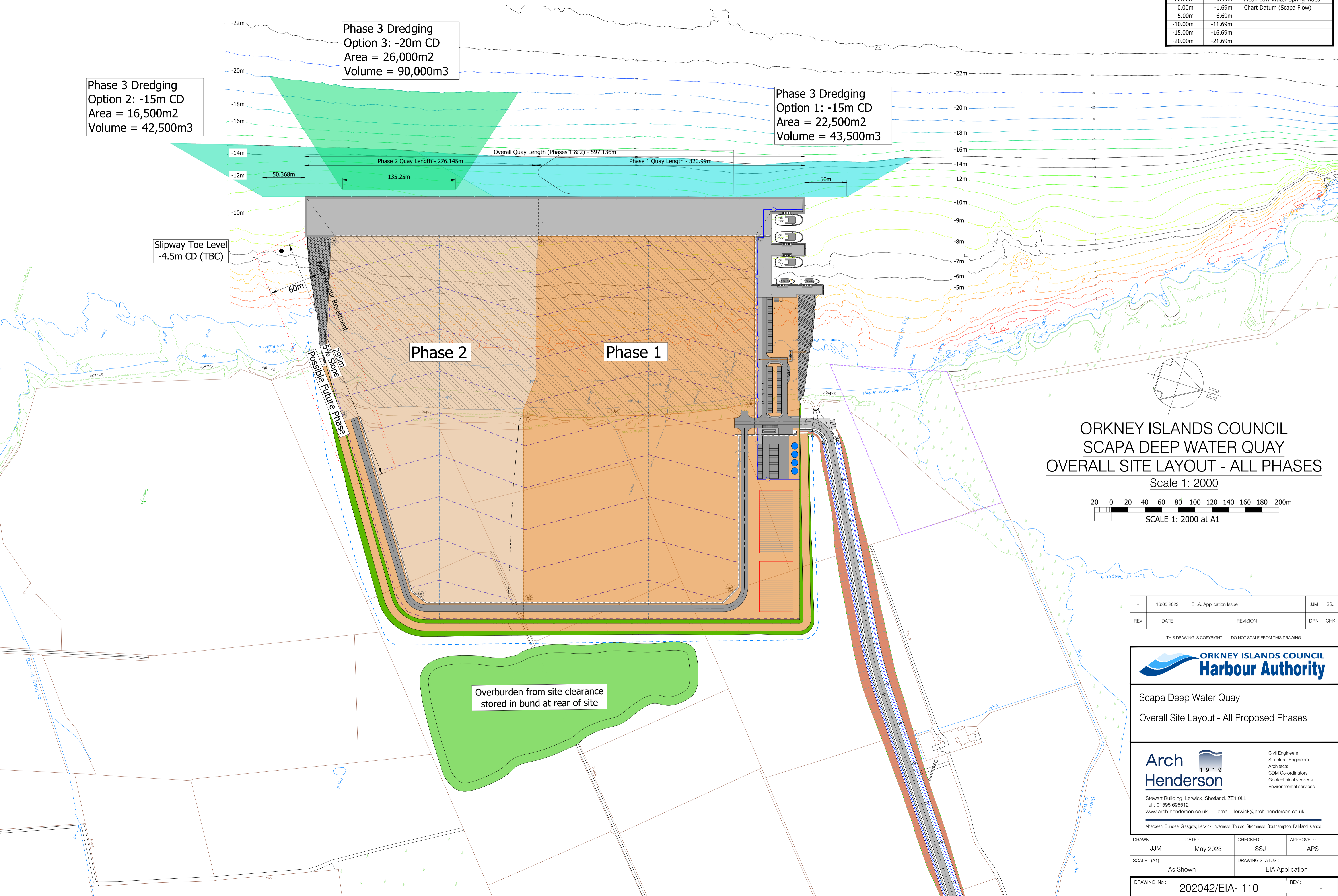
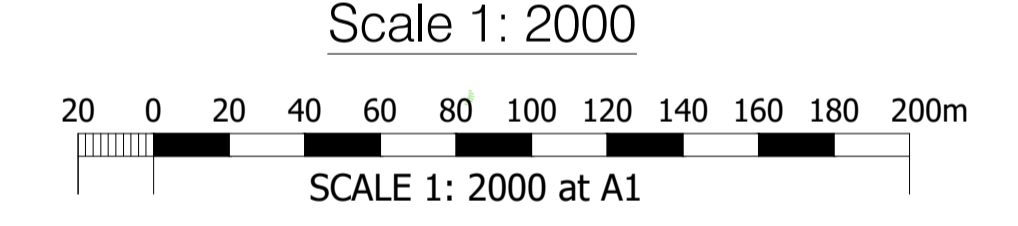


Chart Datum (Scapa Flow)	Ordnance Datum (Newlyn)	Quay Heights and Tide Data Scapa Deep Water Quay
+7.00m	+5.31m	Quay Edge Level
+3.60m	+1.91m	Mean High Water Spring Tides
+1.69m	0.00m	Ordnance Datum (Newlyn)
+0.70m	-0.99m	Mean Low Water Spring Tides
0.00m	-1.69m	Chart Datum (Scapa Flow)
-5.00m	-6.69m	
-10.00m	-11.69m	
-15.00m	-16.69m	
-20.00m	-21.69m	



ORKNEY ISLANDS COUNCIL
SCAPA DEEP WATER QUAY
OVERALL SITE LAYOUT - ALL PHASES



REV	DATE	REVISION	DRN	CHK
-	16.05.2023	E.I.A. Application Issue	JJM	SSJ

THIS DRAWING IS COPYRIGHT. DO NOT SCALE FROM THIS DRAWING.



Scapa Deep Water Quay
Overall Site Layout - All Proposed Phases

Arch Henderson 1919

Civil Engineers
Structural Engineers
Architects
CDM Co-ordinators
Geotechnical services
Environmental services

Stewart Building, Lerwick, Shetland, ZE1 0LL.
Tel: 01595 695512
www.arch-henderson.co.uk - email: lerwick@arch-henderson.co.uk

Aberdeen, Dundee, Glasgow, Lerwick, Inverness, Thurso, Stromness, Southampton, Falkland Islands

DRAWN: JJM	DATE: May 2023	CHECKED: SSJ	APPROVED: APS
SCALE: (A1)	As Shown	DRAWING STATUS: EIA Application	
DRAWING No: 202042/EIA- 110		REV: -	