



Bowdun Offshore Wind Farm, Report to Inform Appropriate Assessment

Part 3, Appendix 3A: Offshore Ornithology
Special Protection Area Apportioning Technical
Report

TWP-BOW-RPS-ENV-RPT-00038 | April 2026



Contents

1	Introduction	1
2	Methodology	3
2.1	Species	3
2.2	Apportioning of Potential Impacts During the Breeding Season	3
2.3	Immature and Sabbatical Birds During the Breeding Season	6
2.4	Apportioning of Potential Impacts During the Non-breeding Season	11
3	Results	13
3.2	Fulmar.....	13
3.3	Gannet	17
3.4	Kittiwake.....	18
3.5	Great Black-backed Gull.....	22
3.6	Herring Gull.....	23
3.7	Arctic Tern.....	24
3.8	Guillemot.....	25
3.9	Razorbill.....	26
3.10	Puffin.....	28
4	Discussion	30
4.2	Results	30
4.3	Methodology – Assumptions and Caveats	37
4.4	Immature Proportions	37
	References	38
	Annex A. Colony Distance from the Array Area	40
	Annex B. Full Breeding Season Apportioning Results	80

List of Tables

Table 2.1: Foraging Ranges Used to Determine Connectivity of Colonies with the Array Area During the Breeding Season, Taken from Woodward <i>et al.</i> (2019)	4
Table 2.2: Number of Birds Assigned to Different Age Class Categories During Site-specific Surveys of the Array Area During the Breeding Season	7
Table 2.3: Steps Used to Account for the Underestimation of Immature Kittiwake Using DAS Imagery	7
Table 2.4: Proportion of Age Classes Used for Species Which Could Not be Aged Using DAS Data. Survival Rates are Derived From Information Presented in Horswill and Robinson (2015).....	9
Table 2.5: Sabbatical Rates Used During the Assessment.....	10
Table 2.6: BDMPS Estimates from Furness (2015) Used to Carry Out Non-breeding Season Apportioning ¹	11
Table 3.1: Apportioning Values for Fulmar During the Breeding Season.....	13
Table 3.2: Apportioning Value for Fulmar During Winter and Migration Seasons	15
Table 3.3: Apportioning Values for Gannet During the Breeding Season	17
Table 3.4: Apportioning Values for Gannet During Both Autumn and Spring Migration	18
Table 3.5: Apportioning Values for Kittiwake During the Breeding Season	19
Table 3.6: Apportioning Values for Kittiwake During Both Autumn and Spring Migration	20
Table 3.7: Apportioning Values for Great Black-backed Gull During the Breeding Season.....	22
Table 3.8: Apportioning Values for Great Black-backed Gull During the Non-breeding Season.....	22
Table 3.9: Apportioning Values for Herring Gull During the Breeding Season	23
Table 3.10: Apportioning Values for Arctic Tern During the Breeding Season	24
Table 3.11: Apportioning Values for Arctic Tern During the Non-breeding Season. All counts are Composed of Adults and Immatures	24
Table 3.12: Apportioning Values for Guillemot During the Breeding and Non-breeding Season	25
Table 3.13: Apportioning Values for Razorbill During the Breeding Season	26
Table 3.14: Apportioning Values for Razorbill During Migration and Winter	27
Table 3.15: Apportioning Values for Puffin During the Breeding Season	28
Table 3.16: Apportioning Values for Puffin During the Non-breeding Season.....	29
Table 4.1: Apportioning Values Used to Apportion Mortalities from Displacement and CRM Analysis. Only SPAs with an Apportioning Value Greater Than 0.000 for Either Season Have Been Presented	32

List of Figures

Figure 1.1: Offshore Ornithology Study Area.....	2
--	---

Glossary

Defined Term	Definition
Array Area	The Array Area is the area in which the Offshore Generation Assets will be located.
Digital Aerial Surveys (DAS)	A method for undertaking baseline ornithological and marine mammal data collection surveys. Usually undertaken over a period of 24 months.
Displacement	An impact that occurs when an animal is forced away from an area of habitual usage. This can be temporary (i.e. a ship moving) or permanent (i.e. the placement of offshore infrastructure).
Effect	Term used to express the consequence of an impact i.e. the result of change or changes on specific environmental resources or receptors. The significance of an effect is determined by correlating the magnitude of the impact with the importance, or sensitivity of the receptor or resource in accordance with defined significance criteria.
Environmental Impact Assessment (EIA)	Assessment of the potential likely significant effects of the Proposed Development on the physical, biological, and human environment during construction, Operation and Maintenance (O&M) and decommissioning.
Export Cable Corridor	The area seaward of MHWS which connects the Array Area with the Landfall within which the Offshore Export Cables will be installed.
Habitats Regulations Appraisal (HRA)	An assessment carried out under the Habitats Regulations to determine if a plan or project could adversely affect the integrity of a European site.
Inter-Array Cables (IAC)	Cables which link the Wind Turbines to each other and with the OSPs.
Interconnector Cables	Cables which will connect individual OSPs to each other to provide redundancy against cable failure elsewhere.
Landfall	The area in which the Offshore Export Cables make landfall and is also the transitional area between the Offshore Transmission Assets and the Onshore Transmission Assets. Located in the Intertidal Area at Benholm.
Plan Option Area (POA)	A location identified in the Sectoral Marine Plan (SMP) as a preferred area for commercial scale offshore wind development.
Population Viability Analysis (PVA)	Numerical modelling of a population which looks at the difference between the baseline (counterfactual) and impacted scenarios. PVA is used to understand how the population growth rate and population size is affected by the predicted impact.
Proposed Development	Term used to define the Offshore Infrastructure associated with the Project seaward of MHWS for which consent is being sought. Further details of the parameters are included in Report to Inform Appropriate Assessment (RIAA), Part 1: Introduction
Qualifying Features	The features for which a European site has been officially designated to protect.
Report to Inform Appropriate Assessment (RIAA)	The RIAA provides detailed information to support the process of AA (undertaken by the competent authority) as part of the HRA, which evaluates the potential impacts of a project or plan on European Sites.

Defined Term	Definition
Scoping Opinion	A document produced by MD-LOT which is issued in response to submission and review of the Offshore Scoping Report. The Scoping Opinion is supported with feedback and advice from consultees, which details what is expected to be included in the Offshore EIA Report and what can be scoped out of the EIA process.
Sectoral Marine Plan (SMP)	A plan developed by the Scottish Government which provide the strategically planned spatial footprint for offshore wind development in Scotland.
Special Protection Areas (SPAs)	SPAs are sites that are designated to protect rare or vulnerable birds (as listed on Annex I of the Directive 2009/147/EC on the conservation of wild birds), as well as regularly occurring migratory species.
Study Area	For each environmental topic, the baseline environment will be characterised, and the potential environmental impacts will be described within a topic-specific study area. Specific study areas are defined for each topic and are based on the maximum spatial extent across which potential impacts of the Project may be experienced by the relevant receptors (i.e. Zone of Influence).
Thistle Wind Partners (TWP)	Company established for the development of the Project.
Wind Turbines	Structures comprising of a tubular tower, rotor blades, and a nacelle which houses the Wind Turbine generator.

Acronyms

Acronym	Definition
AOB	Apparently Occupied Burrows
AON	Apparently Occupied Nests
AOS	Apparently Occupied Sites
AOT	Apparently Occupied Territories
BDMPS	Biologically Defined Minimum Population Scales
CRM	Collision Risk Modelling
DAS	Digital Aerial Survey
EIA	Environmental Impact Assessment
HRA	Habitats Regulations Appraisal
IAC	Inter-Array Cable
IND	Individuals
OSP	Offshore Substation Platform
O&M	Operation and Maintenance
POA	Plan Option Area
RIAA	Report to Inform Appropriate Assessment
SMP	Sectoral Marine Plan
SPA	Special Protection Area
VOR	Valued Ornithological Receptor

Table of Units

Units	Definition
%	Percent
km	Kilometre
km ²	Square kilometre

1 Introduction

- 1.1.1 This Ornithology Technical Report presents the offshore ornithology species apportioning for the Bowdun Offshore Wind Farm (OWF) Project (hereafter referred to as the ‘Proposed Development’). The Proposed Development covers the Option Lease Area that is located in the E3 Plan Option Area (POA), as detailed in the Sectoral Marine Plan (SMP) for Offshore Wind Energy (Scottish Government, 2020), and the Offshore Export Cable Corridor. The Site Boundary of the Proposed Development covers the Array Area and Export Cable Corridor (Figure 1.1). The Array Area covers an area of 187 km², is located 38 km offshore at its closest point, and will comprise the Wind Turbines (fixed foundation), Inter-Array Cables (IACs), Offshore Substation Platforms (OSPs), Interconnector Cables, and any necessary scour/cable protection. The Export Cable Corridor consists of up to three Offshore Export Cables which make Landfall at Benholm, Aberdeenshire.
- 1.1.2 Marine renewable developments, such as the Proposed Development, are often within the foraging range of several breeding seabird colonies, including those designated as Special Protected Areas (SPAs). It is therefore important to determine the potential impact on seabirds named as qualifying features and/or named as part of species assemblages within these SPAs using apportioning.
- 1.1.3 To apportion the impacts of displacement and Collision Risk Modelling (CRM) on seabirds during the breeding season, NatureScot (2018) presents a theoretical approach. This approach involves determining which seabird colonies are within foraging range and therefore have connectivity with the Array Area for each species, before calculating proportions of individuals likely to come from each colony. For the non-breeding season, the standard approach to apportioning uses information presented in Furness (2015). Once determined, these proportions, or apportioning values, can then be used to distribute impacts across both SPA and non-SPA colonies.
- 1.1.4 The results from this technical report will be applied to the findings from the Volume 3, Technical Appendix 11.3: Displacement Technical Report (TWP-BOW-RPS-OFE-RPT-00021) and Volume 3, Technical Appendix 11.4: Collision Risk Modelling Technical Report (TWP-BOW-RPS-OFE-RPT-00022) of the Offshore Environmental Impact Assessment (EIA) Report, and accompanies Volume 2, Chapter 11: Offshore Ornithology (TWP-BOW-RPS-OFE-RPT-00026) to support the consent application for the Proposed Development. The results of this appendix are also used within the Report to Inform Appropriate Assessment (RIAA), Part 3: Special Protection Areas and Ramsar Sites as part of the Habitats Regulations Appraisal (HRA) for the Proposed Development.

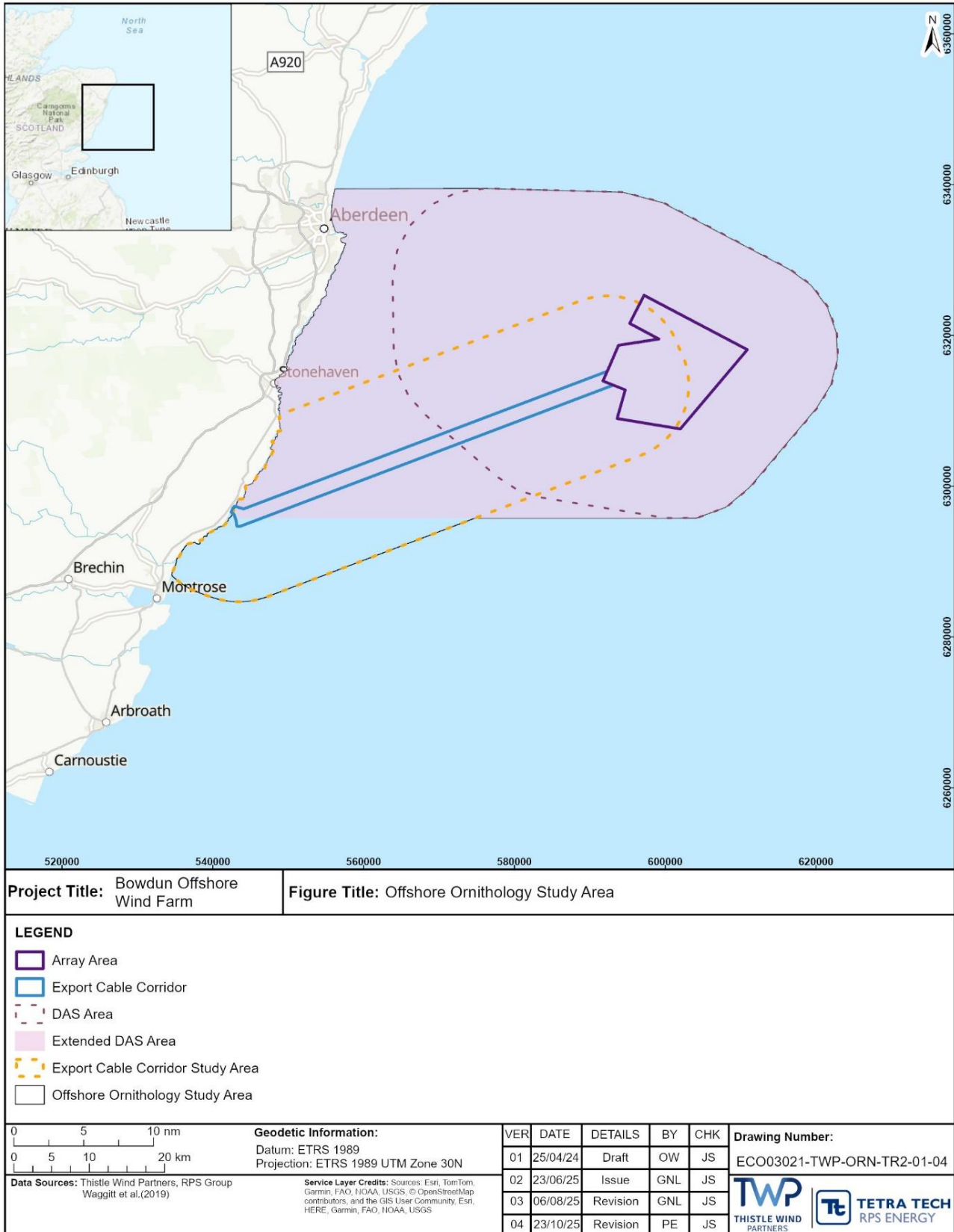


Figure 1.1: Offshore Ornithology Study Area

2 Methodology

2.1 Species

2.1.1 Apportioning was carried out for all species identified as Valued Ornithological Receptors (VOR). A species was identified as a VOR based on their abundance within the Array Area Study Area, their vulnerability to impacts (as described in Bradbury *et al.*, 2014) and their status as a qualifying feature of SPAs with theoretical connectivity to the Array Area. A detailed description of this process is presented in Section 4.3: Identification of Valued Ornithological Receptors of Volume 3, Technical Appendix 11.1: Offshore Ornithology Baseline Characterisation (TWP-BOW-RPS-OFE-RPT-00020) of the Offshore EIA Report.

2.1.2 Breeding season and non-breeding season apportioning was carried out when appropriate for the nine species screened in for the assessment of collision risk and/or displacement:

- northern fulmar *Fulmarus glacialis*, hereafter ‘fulmar’;
- northern gannet *Morus bassanus*, hereafter ‘gannet’;
- black-legged kittiwake *Rissa tridactyla*, hereafter ‘kittiwake’;
- great black-backed gull *Larus marinus*;
- European herring gull *Larus argentatus*, hereafter ‘herring gull’;
- Arctic tern *Sterna paradisaea*;
- common guillemot *Uria aalge*, hereafter ‘guillemot’;
- razorbill *Alca torda*; and
- Atlantic puffin *Fratercula arctica*, hereafter ‘puffin’.

2.1.3 Apportioning was carried out for impacts from displacement, collision, and the combined impact of displacement and collision, depending on the species. Specifically, displacement impacts were apportioned for Auk species (guillemot, razorbill and puffin) and fulmar; CRM impacts were apportioned for Arctic tern, herring gull and great black-backed gull; and both displacement and CRM were apportioned for gannet and kittiwake (see Volume 3, Technical Appendix 11.1: Offshore Ornithology Baseline Characterisation (TWP-BOW-RPS-OFE-RPT-00020) of the Offshore EIA Report for more information on impact selection for species).

2.2 Apportioning of Potential Impacts During the Breeding Season

2.2.1 Although the Marine Scotland Apportioning Tool (Butler *et al.*, 2020) is available to carry out apportioning for three species (guillemot, kittiwake, and razorbill), apportioning was carried out following the theoretical approach presented by NatureScot (2018) for all species. This method was implemented as the Apportioning Tool relies on data from the Seabird 2000 census which has been superseded by the Seabird Count census (Burnell *et al.*, 2023) carried out between 2015 to 2021.

2.2.2 The NatureScot (2018) approach has two stages. Firstly, a long list of colonies, and the number of breeding adults present, with connectivity to the Proposed Development must be collated. Once the long list has been compiled, calculations are subsequently carried out to determine the proportional weightings, hereafter ‘apportioning values’, for each colony.

Determining Colonies with Connectivity to the Proposed Development

2.2.3 Adults are central place foragers during the breeding season, meaning that they are strongly associated with a breeding colony. Due to this, the individuals impacted by the Proposed Development are expected to be associated with colonies within foraging range of the Array Area. These colonies are said to have connectivity with the Proposed Development.

2.2.4 A colony is said to have connectivity if the distance from the Array Area is less than or equal to the recommended foraging ranges, derived from Woodward *et al.* (2019), and presented in NatureScot (2023a) guidance (Table 2.1), then the colony was determined to have connectivity with the Proposed Development.

Table 2.1: Foraging Ranges Used to Determine Connectivity of Colonies with the Array Area During the Breeding Season, Taken from Woodward *et al.* (2019)

Species	Mean max foraging range (km)	Standard deviation (SD) (km)	Foraging range used for apportioning (km)
Fulmar	542.3	657.9	1,200.2
Gannet ¹	315.2	194.2	509.4
Kittiwake	156.1	144.5	300.6
Great black-backed gull	73.0	-	73.0
Herring gull	58.8	26.8	85.6
Arctic tern	25.7	14.8	40.5
Guillemot ²	55.5	39.7	95.2
Razorbill ³	73.8	48.4	122.2
Puffin	137.1	128.3	265.4

¹For gannet, a foraging range of 590.0 km, 516.7 km and 709.0 km were used to determine connectivity for Forth Islands SPA, Grassholm SPA and St Kilda SPA following NatureScot guidance (2023a).

²For guillemot, a foraging range of 153.7 km was used to determine connectivity for all Northern Isle SPAs and colonies following NatureScot guidance (2023a).

³For razorbill, a foraging range of 164.6 km was used to determine connectivity for all Northern Isle SPAs and colonies following NatureScot guidance (2023a).

2.2.5 By-sea distances were used throughout apportioning, instead of ‘straight-line’ distances, as these better represent the real-life movements of seabirds. For SPA colonies, distances were measured from the closest edge of the Array Area to the closest edge of the SPA boundary when determining connectivity. For non-SPA colonies, distances were measured to the closest count section, or sub-site, within the Seabird Monitoring Programme database. Distances are presented in Annex A.

2.2.6 Once colonies with connectivity to the Array Area had been determined, the number of breeding adults at each colony were collated. Counts for SPA colonies were taken from the Seabird Counts census (Burnell *et al.*, 2023) where possible¹. Remaining colony counts were taken from the Seabird Monitoring Programme database. For each non-SPA colony, the most recent counts available in the data were used, unless the most recent count was taken before 2000. In these cases, it was assumed the colony no longer exists, and the sub-site was excluded.

2.2.7 All counts were converted to individuals (IND) using the following rules:

- counts measured in Apparently Occupied Nests (AON), Apparently Occupied Sites (AOS), Apparently Occupied Burrows (AOB) and Apparently Occupied Territories (AOT) were multiplied by two; and
- for guillemot and razorbill, counts measured in IND were multiplied by a conversion factor of 1.34 (in accordance with Walsh *et al.*, 1995)².

Apportioning Calculations

2.2.8 To determine the resulting weighting for each colony, three colony-specific weighting factors were applied to each colony using the following formula (NatureScot, 2018):

$$\text{Resulting weighting} = \left(\frac{\text{Colony population}}{\text{Sum of populations}} \right) \times \left(\frac{\sum(\text{Distance})^2}{\text{Distance}^2} \right) \times \left(\frac{\left(\frac{1}{\text{Prop of foraging range at sea}} \right)}{\sum \left(\frac{1}{\text{Prop of foraging range at sea}} \right)} \right)$$

2.2.9 The first weighting factor applied to each colony accounts for the fact that larger colonies are expected to contribute more individuals to those found in the Array Area. Colony counts used were collated as previously described.

2.2.10 It is assumed that as the distance from the colony increases the density of birds will decrease by a factor proportional to $1/\text{distance}^2$ as area increases proportionally to πr^2 . To account for this trend in seabird density, a second weighting based on $1/\text{distance}^2$ was used.

2.2.11 Following NatureScot (2018) guidance, by-sea distances were measured from the centre of the Array Area to the geometrical centre of the colony where possible when calculating resulting weighting. Each SPA was treated as one colony, meaning a single point was used to measure distances for each SPA.

¹ Colony counts were taken for the North Caithness Cliffs SPA in 2023 and the East Caithness Cliffs in 2024 and 2025. These surveys were undertaken by the North-East and Eastern Ornithology Group (NEEOG). Results from these surveys are presented in Volume 3, Technical Appendix 11.1: Offshore Ornithology Baseline Characterisation Report (TWP-BOW-RPS-OFE-RPT-00020) of the Offshore EIA Report. Although these survey counts are not used in the impact assessment, they are used to provide important contextual information on recent populations trends for these SPAs in the RIAA, Part 3: Special Protection Areas and Ramsar sites (TWP-BOW-RPS-ENV-RPT-00012).

² Walsh *et al.* (1995) states that a count of 1 IND is equivalent to 0.67 breeding pairs for guillemot and razorbill. Therefore, in order to correct counts recorded in IND so that one IND is equal to half of a breeding pair, a correction factor of 1.34 was applied to counts. An example of the working used to determine this correction factor using a count of 10 IND is shown below:

1. Calculation of breeding pairs using original count: 10 IND x 0.67 = 6.7 breeding pairs
2. Calculation of IND from breeding pairs: 6.7 breeding pairs x 2 = 13.4 IND (corrected)
3. Calculation of correction factor: 13.4 IND (corrected) / 10 IND = 1.34

For non-SPA colonies which consisted of sub-sites represented by point locations, the distance to each sub-site was measured and the mean distance was used in calculations.

- 2.2.12 The geometric centre of Forth Islands SPA, was not found to be representative of the location of breeding colonies. Due to this, the Isle of May was used as the location for all species included in analysis other than gannet. For gannet, distances were measured to Bass Rock.
- 2.2.13 The third weighting accounts for an increase in bird density with a decrease in the proportion of foraging range at sea. The proportion of the foraging range at sea was calculated by creating a buffer, with a radius equal to the relevant foraging range (Table 2.1), around each colony point.
- 2.2.14 Once resulting weightings were calculated by multiplying the three weightings, the apportioning values were calculated for each colony by dividing the resultant weighting by the sum of all the resultant weightings.

2.3 Immature and Sabbatical Birds During the Breeding Season

- 2.3.1 During the breeding season, seabird populations are likely to consist of multiple age classes, including breeding adults, immature birds (i.e. those which have not yet reached breeding age) and non-breeding adults (i.e. birds which have reached breeding age but are not breeding).
- 2.3.2 It is important to identify the proportion of breeding adults as this is relevant for the HRA, which focuses on the breeding adult portion of seabird populations.

Proportion of Immature Birds

- 2.3.3 A significant proportion of seabird populations are comprised of immature birds which have not yet reached the age of breeding. It is important to distinguish between age classes, as a proportion of these immature birds will return to natal colonies during the breeding season alongside adult birds. Within this appendix, site-specific Digital Aerial Survey (DAS), flown over the Ornithology Array Area Study Area (Figure 1.1), and data from Horswill and Robinson (2015) have been used to determine the proportion of immatures present.
- 2.3.4 Site-specific DAS data can be used to calculate the proportion of immatures for gannet, kittiwake, and large gull species as immatures and adults are easily distinguishable. The proportion of the immatures observed within the DAS data are presented in Table 2.2. This method was not used for great black-backed gull, as no individuals were observed within the Array Area during the breeding season.

Table 2.2: Number of Birds Assigned to Different Age Class Categories During Site-specific Surveys of the Array Area During the Breeding Season

Species	Breeding Season	Number of Birds for which Age was not Identified	Number of Adults Observed	Number of Immatures Observed	Proportion of Adult Birds (%)	Proportion of Immature Birds (%)
Gannet	Mid-March to September	25	386	11	97.23	2.77
Kittiwake	Mid-April to August	302	449	14	96.98	3.02
Herring gull	April to August	169	59	18	76.62	23.38

2.3.5 For kittiwake, the identification of different age classes can vary. For example, one year old individuals can be easily identified due to differences in plumage compared to adults. However, other age classes, such as second- and third-year old individuals, are not possible to be identified using at-sea data (Coulson, 2011; Olsen and Larsson, 2003). Due to this it is likely that the proportion of immatures presented in Table 2.2 is an underestimation and therefore the proportion of breeding adults is an overestimation.

2.3.6 To correct for the underestimation of immature birds, values from Horswill and Robinson (2015) have been used as shown in Table 2.3. It is likely that the proportion of immatures derived using this correction is still a slight underestimation as second- and third-year immatures show a greater affinity for natal waters than first-year birds.

Table 2.3: Steps Used to Account for the Underestimation of Immature Kittiwake Using DAS Imagery

Step in analysis	Formula	Value
(A) Proportion of immatures identified in DAS (assumed to be 1 year old)	Number immatures/Number of individuals aged	3.02%
(B) Survival rate immature age classes (Horswill and Robinson, 2015)	NA	0.854
(C) Proportion of kittiwake assigned to two year old birds	$C = A \times B$	2.58%
(D) Proportion of kittiwake assigned to three year old birds	$D = C \times B$	2.21%
(E) Proportion of kittiwake assumed to be juvenile/immature	$E = A + C + D$	7.81%
(F) Proportion of kittiwake assumed to be adult	$F = 100\% - E$	92.19%

2.3.7 For species which could not be aged using DAS data, the proportion of adults was derived from survival rates presented in Horswill and Robinson (2015). From these rates, the stable age structure and proportion of each age class within the population was calculated (Table 2.4).

Table 2.4: Proportion of Age Classes Used for Species Which Could Not be Aged Using DAS Data. Survival Rates are Derived From Information Presented in Horswill and Robinson (2015)

Species	Parameter	Age Class (years)										Productivity (chicks per pair)	
		0 to 1	1 to 2	2 to 3	3 to 4	4 to 5	5 to 6	6 to 7	7 to 8	8 to 9	Adult		
Fulmar	Survival rate	0.845	0.845	0.845	0.845	0.845	0.845	0.845	0.845	0.845	0.936	0.936	0.419
	Proportion in population	0.101	0.086	0.073	0.062	0.053	0.045	0.039	0.033	0.028	0.480		
Great black-backed gull	Survival rate	0.930	0.930	0.930	0.930	0.930	-	-	-	-	0.930	0.930	1.139
	Proportion in population	0.194	0.156	0.126	0.102	0.082	-	-	-	-	0.340		
Herring gull	Survival rate	0.798	0.834	0.834	0.834	0.834	-	-	-	-	0.834	0.834	0.920
	Proportion in population	0.178	0.141	0.117	0.097	0.080	-	-	-	-	0.387		
Arctic tern	Survival rate	0.837	0.837	0.837	0.837	-	-	-	-	-	0.837	0.837	0.380
	Proportion in population	0.116	0.103	0.091	0.080	-	-	-	-	-	0.611		
Guillemot	Survival rate	0.560	0.792	0.917	0.939	0.939	0.939	-	-	-	0.939	0.939	0.672
	Proportion in population	0.168	0.091	0.070	0.062	0.056	0.051	-	-	-	0.501		
Razorbill	Survival rate	0.794	0.794	0.895	0.895	0.895	-	-	-	-	0.895	0.895	0.570
	Proportion in population	0.145	0.113	0.088	0.078	0.069	-	-	-	-	0.508		
Puffin	Survival rate	0.892	0.892	0.892	0.760	0.805	-	-	-	-	0.906	0.906	0.617
	Proportion in population	0.143	0.124	0.108	0.094	0.069	-	-	-	-	0.463		

Proportion of Sabbatical Birds

- 2.3.8 It is important to consider adults which are not breeding, hereby known as sabbatical birds, as including non-breeding adults during apportioning is likely to lead to an overestimation of the potential impacts (Marine Scotland, 2017a; 2017b).
- 2.3.9 To account for sabbatical birds within a given sea area, published estimates, advised by Marine Scotland (2017a; 2017b), have been used during the assessment (Table 2.5).

Table 2.5: Sabbatical Rates Used During the Assessment

Species	Sabbatical Rate Used (%)
Fulmar	0
Gannet	10
Kittiwake	10
Great black-backed gull	35
Herring gull	35
Arctic tern	0
Guillemot	7
Razorbill	7
Puffin	7

2.4 Apportioning of Potential Impacts During the Non-breeding Season

2.4.1 The method used to carry out apportioning during the non-breeding season varied by species, following the recommendations by NatureScot (2023b). For the majority of species, apportioning was carried out using information from the Biologically Defined Minimum Population Scales (BDMPS) presented in Furness (2015). For guillemot and herring gull a different approach was taken, as explained at 2.4.4 to 2.4.7 below.

All Species Except Guillemot and Herring Gull

2.4.2 For the relevant species, the number of UK individuals (adults and immatures) from each SPA were divided by the relevant BDMPS estimates (Furness, 2015) shown in Table 2.6.

Table 2.6: BDMPS Estimates from Furness (2015) Used to Carry Out Non-breeding Season Apportioning¹

Species	Season	Season Definition	BDMPS estimate (adults and immature)
Fulmar	Winter	November	568,736
	Migration	September and October; December to March	957,502
Gannet	Autumn	September to November	456,299
	Spring	December to March	248,385
Kittiwake	Autumn migration	August to December	829,937
	Spring migration	January to April	627,816
Great black-backed gull	Non-breeding	September to March	91,399
Arctic tern	Migration seasons	July to early September; late April to May	163,930
Razorbill	Migration	August to October; January to March	591,874
	Winter	November to December	218,622
Puffin	Non-breeding	Mid-August to March	231,957

¹Non-breeding season apportioning was not carried using BDMPS estimates for two VORs: guillemot and herring gull.

2.4.3 The number of adults and immatures present within each BDMPS were taken from Furness (2015) where possible. For SPA colonies found to have connectivity with the Proposed Development during the breeding season which are not presented within Furness (2015), the number of immatures from each SPA have been calculated using the breeding adult counts from Burnell *et al.* (2023) multiplied by the number of immatures per adult reported in Furness (2015). The number of individuals from each SPA within the BDMPS have been calculated using the proportion of birds present in the BDMPS area from the nearest named designated site.

Guillemot

- 2.4.4 For guillemot, NatureScot (2023a) advises the use of the mean max foraging range plus one Standard Deviation (SD) (Woodward *et al.*, 2019; Table 2.1) to define non-breeding season regional populations. This is due to evidence from Buckingham *et al.* (2022) which found that guillemots are likely to stay within the vicinity of their breeding colonies during the non-breeding season.
- 2.4.5 Due to this a theoretical approach (NatureScot, 2018) has been used to apportion impacts to guillemots during the non-breeding season, and the non-breeding season regional population is assumed to be the same as the breeding season regional population throughout the assessment.

Herring Gull

- 2.4.6 To apportion impacts during the non-breeding season for herring gull, the number of mortalities were apportioned using the values calculated using the NatureScot (2018) method. Once calculated, a correction (0.675) to account for the influx of birds from non-UK and west coast UK colonies was applied, following the methodology used in the assessment for Berwick Bank Offshore Wind Farm (SSE Renewables, 2022). This correction was used to calculate the non-breeding season regional population.
- 2.4.7 To calculate the non-breeding regional population for herring gull, the foraging range population (19,101) was used following advice from the Scoping Opinion (MD-LOT, 2024). A correction factor was added to the foraging range population to allow for the influx of birds from west coast and non-UK colonies, using BDMPS proportions (Furness, 2015). In Furness (2015), there is a total of 466,511 herring gull in the 'UK North Sea and Channel' BDMPS, 314,860 of which are from north coast colonies, 135,130 of which are from non-UK colonies, and 16,521 of which are from west coast colonies (Furness, 2015). The proportion of herring gull from UK North Sea and Channel colonies is therefore 0.675 (314,860/466,511). Applying this proportion to the foraging range population gives a non-breeding population of 28,298 (19,101/0.675).

3 Results

- 3.1.1 The results of breeding and non-breeding season apportioning analysis are presented in Sections 3.2 to 3.10.
- 3.1.2 The apportioning values presented are the proportional weighting for each colony, meaning that values of 1.000 equate to 100%, 0.100 equates to 10% and 0.010 equates to 1%. Any designated colonies with an apportioning value of 0.000 have been excluded. For a full list of designated sites, see Annex B.

3.2 Fulmar

- 3.2.1 Apportioning was carried out for impacts from displacement in fulmar. Breeding season apportioning values for SPAs which include fulmar as a qualifying feature or named as part of the seabird assemblage and are within foraging range of the Array Area are presented in Table 3.1. Apportioning weightings for non-designated breeding colonies are presented in Annex B. Apportioning values for the non-breeding season (winter and migration) are presented in Table 3.2.

Table 3.1: Apportioning Values for Fulmar During the Breeding Season

SPA	Colony count (AOS) (Burnell et al., 2023)	Number of breeding adults (individuals)	Distance to the Array Area (km)	Proportion of foraging range at sea	Resulting weighting	Apportioning value
Buchan Ness to Collieston Coast	826	1,652	55.88	0.676	0.327	0.060
Calf of Eday	2,324	4,648	275.74	0.719	0.036	0.007
Cape Wrath	1,477	2,954	321.17	0.754	0.016	0.003
Clare Island	2,647	5,294	975.71	0.849	0.003	0.001
Cliffs of Moher	4,801	9,602	1,076.06	0.821	0.004	0.001
Copinsay	1,618	3,236	228.29	0.712	0.036	0.007
East Caithness Cliffs	13,964	27,928	190.53	0.712	0.452	0.083
Fair Isle	32,491	64,982	285.11	0.710	0.471	0.087
Fetlar	9,177	18,354	451.74	0.717	0.053	0.010
Flamborough and Filey Coast	846	1,692	321.22	0.586	0.012	0.002

SPA	Colony count (AOS) (Burnell et al., 2023)	Number of breeding adults (individuals)	Distance to the Array Area (km)	Proportion of foraging range at sea	Resulting weighting	Apportioning value
Flannan Isles	3,066	6,132	485.72	0.812	0.013	0.002
Foula	10,253	20,506	354.36	0.725	0.094	0.017
Fowlsheugh	525	1,050	51.30	0.677	0.246	0.045
Handa	723	1,446	361.40	0.757	0.006	0.001
Hermaness, Saxa Vord and Valla Field	13,208	26,416	470.05	0.719	0.070	0.013
Hoy	20,541	41,082	233.21	0.722	0.438	0.081
Mingulay and Berneray	7,048	14,096	585.69	0.799	0.022	0.004
North Caithness Cliffs	15,370	30,740	221.21	0.718	0.366	0.067
North Rona and Sula Sgeir	2,210	4,420	382.88	0.786	0.016	0.003
Noss	5,092	10,184	353.17	0.712	0.048	0.009
Rousay	2,192	4,384	266.18	0.723	0.036	0.007
Shiant Isles	1,506	3,012	443.67	0.779	0.008	0.002
St Kilda	29,186	58,372	552.99	0.827	0.097	0.018
Sumburgh Head	5,950	11,900	321.31	0.711	0.068	0.012
Troup, Pennan and Lion's Heads	1,894	3,788	107.04	0.687	0.201	0.037
West Westray	1,214	2,428	278.84	0.726	0.018	0.003
Non-designated sites¹	-	290,530	-	-	-	0.416

¹Non-designated colonies include non-SPA colonies and SPA colonies for which fulmar are not a qualifying feature and/or named within a qualifying seabird assemblage.

Table 3.2: Apportioning Value for Fulmar During Winter and Migration Seasons

SPA ¹	Winter			Migration		
	BDMPS population (no. of individuals)	SPA population within BDMPS (no. of individuals)	Apportioning value	BDMPS population (no. of individuals)	SPA population within BDMPS (no. of individuals)	Apportioning value
Buchan Ness to Collieston Coast	568,736	2,422	0.004	957,502	4,090	0.004
Calf of Eday	568,736	3,264	0.006	957,502	5,143	0.005
Copinsay	568,736	2,888	0.005	957,502	4,551	0.005
East Caithness Cliffs	568,736	25,166	0.044	957,502	42,492	0.044
Fair Isle	568,736	52,538	0.092	957,502	82,780	0.086
Fetlar	568,736	35,011	0.062	957,502	24,882	0.026
Flamborough and Filey Coast	568,736	1,556	0.003	957,502	2,627	0.003
Flannan Isles	568,736	566	0.001	957,502	545	0.001
Foula	568,736	35,011	0.062	957,502	55,164	0.058
Fowlsheugh	568,736	342	0.001	957,502	577	0.001
Hermaness, Saxa Vord and Valla Field	568,736	12,404	0.022	957,502	19,544	0.020
Hoy	568,736	34,706	0.061	957,502	54,684	0.057
Mingulay and Berneray	568,736	698	0.001	957,502	673	0.001
North Caithness Cliffs	568,736	25,251	0.044	957,502	39,786	0.042
North Rona and Sula Sgeir	568,736	386	0.001	957,502	372	0.000
Noss	568,736	9,299	0.016	957,502	14,652	0.015
Rousay	568,736	1,825	0.003	957,502	2,876	0.003
Shiant Isles	568,736	339	0.001	957,502	326	0.000
St Kilda	568,736	5,099	0.009	957,502	4,914	0.005

SPA ¹	Winter			Migration		
	BDMPS population (no. of individuals)	SPA population within BDMPS (no. of individuals)	Apportioning value	BDMPS population (no. of individuals)	SPA population within BDMPS (no. of individuals)	Apportioning value
Sumburgh Head	568,736	413	0.001	957,502	651	0.001
Troup, Pennan and Lion's Heads	568,736	3,181	0.006	957,502	5,371	0.006
West Westray	568,736	1,200	0.002	957,502	1,890	0.002

¹SPA colonies with an apportioning value of 0.000 for both winter and migration have been removed. For a full list of designated sites, see Annex B.

²SPA colony not presented in Furness (2015) but was found to have connectivity within the Array Area during the breeding season.

3.3 Gannet

3.3.1 Apportioning was carried out for impacts from collision and displacement in gannet. Breeding season apportioning values for SPAs which include gannet as a qualifying feature or named as part of the seabird assemblage and are within foraging range of the Array Area are presented in Table 3.3. Apportioning weightings for non-designated breeding colonies are presented in Annex B. Apportioning values for the non-breeding season (autumn and spring migration) are presented in Table 3.4.

Table 3.3: Apportioning Values for Gannet During the Breeding Season

SPA	Colony count (AOS/AON) (Burnell <i>et al.</i> , 2023)	Number of breeding adults (individuals)	Distance to the Array Area (km)	Proportion of foraging range at sea	Resulting weighting	Apportioning value
Fair Isle	4,971	9,942	285.11	0.855	0.029	0.009
Flamborough and Filey Coast	13,392	26,784	321.22	0.605	0.087	0.027
Forth Islands	75,259	150,518	127.89	0.733	2.559	0.798
Hermaness, Saxa Vord and Valla Field	29,562	59,124	470.05	0.865	0.063	0.020
North Rona and Sula Sgeir	12,271	24,542	382.88	0.883	0.039	0.012
Noss	13,765	27,530	353.17	0.851	0.053	0.016
St Kilda	60,290	120,580	552.99	0.858	0.094	0.029
Sule Skerry and Sule Stack	9,065	18,130	305.64	0.880	0.045	0.014
Non-designated sites ¹	-	27,904	-	-	-	0.074

¹Non-designated colonies include non-SPA colonies and SPA colonies for which gannet are not a qualifying feature and/or named within a qualifying seabird assemblage.

²The distance from the Array Area was measured from Bass Rock, the only breeding colony of gannet within Forth Islands SPA.

Table 3.4: Apportioning Values for Gannet During Both Autumn and Spring Migration

SPA	Autumn Migration			Spring Migration		
	BDMPS population (no. of individuals)	SPA population within BDMPS (no. of individuals)	Apportioning value	BDMPS population (no. of individuals)	SPA population within BDMPS (no. of individuals)	Apportioning value
Ailsa Craig	456,299	4,395	0.010	248,385	0	0.000
Fair Isle	456,299	11,364	0.025	248,385	8,036	0.032
Flamborough and Filey Coast	456,299	38,249	0.084	248,385	22,653	0.091
Forth Islands	456,299	191,857	0.420	248,385	113,627	0.457
Grassholm	456,299	6,365	0.014	248,385	0	0.000
Hermaness, Saxa Vord and Valla Field	456,299	70,526	0.155	248,385	49,875	0.201
North Rona and Sula Sgeir	456,299	4,834	0.011	248,385	0	0.000
Noss	456,299	28,285	0.062	248,385	20,003	0.081
St Kilda	456,299	31,242	0.068	248,385	0	0.000
Sule Skerry and Sule Stack	456,299	2,450	0.005	248,385	0	0.000

3.4 Kittiwake

3.4.1 Apportioning was carried out for impacts from collision and displacement in kittiwake. Breeding season apportioning values for SPAs which include kittiwake as a qualifying feature or named as part of the seabird assemblage and are within foraging range of the Array Area are presented in Table 3.5. Apportioning weightings for non-designated breeding colonies are presented in Annex B. Apportioning values for the non-breeding season (autumn and spring migration) are presented in Table 3.6.

Table 3.5: Apportioning Values for Kittiwake During the Breeding Season

SPA	Colony count (AON) (Burnell et al., 2023)	Number of breeding adults (individuals)	Distance to the Array Area (km)	Proportion of foraging range at sea	Resulting weighting	Apportioning value
Buchan Ness to Collieston Coast	11,295	22,590	55.88	0.721	0.933	0.213
Copinsay	955	1,910	228.29	0.833	0.004	0.001
East Caithness Cliffs	24,479	48,958	190.53	0.773	0.162	0.037
Farne Islands	4,402	8,804	150.62	0.612	0.059	0.013
Flamborough and Filey Coast	45,504	91,008	321.22	0.589	0.139	0.032
Forth Islands	4,542	9,084	115.07 ²	0.609	0.105	0.024
Fowlsheugh	14,039	28,078	51.30	0.673	1.474	0.337
Marwick Head	906	1,812	264.96	0.839	0.003	0.001
North Caithness Cliffs	5,571	11,142	221.21	0.805	0.026	0.006
St Abb's Head to Fast Castle	5,150	10,300	127.88	0.601	0.097	0.022
Troup, Pennan and Lion's Heads	10,616	21,232	107.04	0.735	0.234	0.054
West Westray	2,755	5,510	278.84	0.859	0.008	0.002
Non-designated sites¹	-	58,398	-	-	-	0.257

¹Non-designated colonies include non-SPA colonies and SPA colonies for which kittiwake are not a qualifying feature and/or named within a qualifying seabird assemblage.

²The distance from the Array Area was measured to the Isle of May instead of the geometric centre

Table 3.6: Apportioning Values for Kittiwake During Both Autumn and Spring Migration

SPA ¹	Autumn Migration			Spring Migration		
	BDMPS population (no. of individuals)	SPA population within BDMPS (No. of individuals)	Apportioning value	BDMPS population (No. of individuals)	SPA population within BDMPS (no. of individuals)	Apportioning value
Buchan Ness to Collieston Coast	829,937	23,880	0.029	627,816	21,673	0.035
Calf of Eday	829,937	1,422	0.002	627,816	1,291	0.002
Cape Wrath	829,937	1,117	0.001	627,816	571	0.001
Copinsay	829,937	1,268	0.002	627,816	1,151	0.002
East Caithness Cliffs	829,937	76,941	0.093	627,816	69,828	0.111
Fair Isle	829,937	1,468	0.002	627,816	1,332	0.002
Farne Islands	829,937	6,555	0.008	627,816	5,950	0.009
Flamborough and Filey Coast SPA	829,937	71,623	0.086	627,816	65,002	0.104
Forth Islands	829,937	5,902	0.007	627,816	5,357	0.009
Foula	829,937	623	0.001	627,816	565	0.001
Fowlsheugh	829,937	17,778	0.021	627,816	16,134	0.026
Hermaness, Saxa Vord and Valla Field SPA	829,937	744	0.001	627,816	676	0.001
Hoy	829,937	756	0.001	627,816	686	0.001
Marwick Head	829,937	1,002	0.001	627,816	909	0.001
North Caithness Cliffs	829,937	19,326	0.023	627,816	17,539	0.028
North Colonsay and Western Cliffs	829,937	601	0.001	627,816	307	0.000
Noss	829,937	965	0.001	627,816	876	0.001
Rathlin Island	829,937	856	0.001	627,816	437	0.001
Rousay	829,937	3,359	0.004	627,816	3,048	0.005
St Abb's Head to Fast Castle	829,937	6,479	0.008	627,816	5,880	0.009

SPA ¹	Autumn Migration			Spring Migration		
	BDMPS population (no. of individuals)	SPA population within BDMPS (No. of individuals)	Apportioning value	BDMPS population (No. of individuals)	SPA population within BDMPS (no. of individuals)	Apportioning value
Sumburgh Head	829,937	400	0.000	627,816	363	0.001
Troup, Pennan and Lion's Heads	829,937	28,362	0.034	627,816	25,740	0.041
West Westray	829,937	22,953	0.028	627,816	20,831	0.033

¹SPA colonies with an apportioning value of 0.000 for both autumn and spring migration have been removed. For a full list of designated sites, see Annex B.

3.5 Great Black-backed Gull

Apportioning was carried out for impacts from collision in great black-backed gull. There are no SPAs which include great black-backed gull as a qualifying feature or named as part of the seabird assemblage within foraging range of the Array Area. Consequently, only apportioning for non-designated sites is presented in Table 3.7. Apportioning weightings for non-designated breeding colonies are presented in Annex B. Apportioning values for the non-breeding season are presented in

3.5.1 Table 3.8.

Table 3.7: Apportioning Values for Great Black-backed Gull During the Breeding Season

SPA	Colony count (Burnell <i>et al.</i> , 2023)	Number of breeding adults (individuals)	Distance of the Array Area (km)	Proportion of foraging range at sea	Resulting weighting	Apportioning value
Non-designated sites¹	-	161	-	-	-	1.000

¹Non-designated colonies include non-SPA colonies and SPA colonies for which great black-backed gull are not a qualifying feature and/or named within a qualifying seabird assemblage.

Table 3.8: Apportioning Values for Great Black-backed Gull During the Non-breeding Season

SPA	BDMPS population (no. of individuals)	SPA population within BDMPS (no. of individuals)	Apportioning value
Calf of Eday	91,399	1,270	0.014
Copinsay	91,399	985	0.011
East Caithness Cliffs	91,399	791	0.009
Hoy	91,399	271	0.003
Isles of Scilly	91,399	245	0.003
North Rona and Sula Sgeir	91,399	52	0.001

3.6 Herring Gull

3.6.1 Apportioning was carried out for impacts from collision in herring gull. Breeding season apportioning values for SPAs which include herring gull as a qualifying feature or named as part of the seabird assemblage and are within foraging range of the Array Area are presented in Table 3.9. Apportioning weightings for non-designated breeding colonies are presented in Annex B. As described in Section 2.3, a correction (0.675) for the non-breeding season is to be applied after apportioning impacts using breeding season apportioning values.

Table 3.9: Apportioning Values for Herring Gull During the Breeding Season

SPA	Colony count (AON) (Burnell <i>et al.</i> , 2023)	Number of breeding adults (individuals)	Distance to the Array Area (km)	Proportion of foraging range at sea	Resulting weighting	Apportioning value
Buchan Ness to Collieston Coast	2,077	4,154	55.88	0.704	0.239	0.181
Fowlsheugh	1,035	2,070	51.30	0.542	0.184	0.139
Non-designated sites¹	-	12,951	-	-	-	0.680

¹Non-designated colonies include non-SPA colonies and SPA colonies for which herring gull are not a qualifying feature and/or named within a qualifying seabird assemblage.

3.7 Arctic Tern

3.7.1 Apportioning was carried out for impacts from collision in Arctic tern. No sites with Arctic tern (Table 3.10) as a qualifying feature or named component of the seabird assemblage were found to be within foraging range of the Proposed Development. Apportioning weightings for non-designated breeding colonies are presented in Annex B. Apportioning values for the non-breeding season are presented in Table 3.11.

Table 3.10: Apportioning Values for Arctic Tern During the Breeding Season

SPA	Colony count (AON) (Burnell <i>et al.</i> , 2023)	Number of breeding adults (individuals)	Distance to the Array Area (km)	Proportion of foraging range at sea	Resulting weighting	Apportioning value
Non-designated sites¹	-	3,196	-	-	-	1.000

¹Non-designated colonies include non-SPA colonies and SPA colonies for which Arctic tern are not a qualifying feature and/or named within a qualifying seabird assemblage.

Table 3.11: Apportioning Values for Arctic Tern During the Non-breeding Season. All counts are Composed of Adults and Immatures

SPA	BDMPS population (no. of individuals)	SPA population within BDMPS (no. of individuals)	Apportioning value
Auskerry	163,930	1,872	0.011
Coquet Island	163,930	3,442	0.021
Farne Islands	163,930	5,402	0.033
Forth Islands	163,930	745	0.005
Papa Stour	163,930	2,925	0.018
Papa Westray (North Hill and Holm)	163,930	439	0.003
Rousay	163,930	150	0.001
Sumburgh Head	163,930	507	0.003
West Westray	163,930	1,248	0.008

¹SPA colonies with an apportioning value of 0.000 have been removed. For a full list of designated sites, see Annex B.

3.8 Guillemot

3.8.1 Apportioning was carried out for impacts from displacement in guillemot. Apportioning values for SPAs which include guillemot as a qualifying feature or named as part of the seabird assemblage and are within foraging range of the Array Area are presented in Table 3.12. Following NatureScot (2023a) guidance, the same apportioning values were used for both breeding and non-breeding seasons. Apportioning weightings for non-designated breeding colonies are presented in Annex B.

Table 3.12: Apportioning Values for Guillemot During the Breeding and Non-breeding Season

SPA	Colony count (Burnell et al., 2023)	Number of breeding adults (individuals)	Distance to the Array Area (km)	Proportion of foraging range at sea	Resulting weighting	Apportioning value
Buchan Ness to Collieston Coast	29,433	39,440	55.88	0.714	0.216	0.201
Fowlsheugh	69,828	93,570	51.30	0.558	0.780	0.724
Non-designated sites¹	-	10,959	-	-	-	0.075

¹Non-designated colonies include non-SPA colonies and SPA colonies for which guillemot are not a qualifying feature and/or named within a qualifying seabird assemblage.

3.9 Razorbill

3.9.1 Apportioning was carried out for impacts from displacement in razorbill. Breeding season apportioning values for SPAs which include razorbill as a qualifying feature or named as part of the seabird assemblage and are within foraging range of the Array Area are presented in Table 3.13. Apportioning weightings for non-designated breeding colonies are presented in Annex B. Apportioning values for the non-breeding season (migration and winter) are presented in Table 3.14.

Table 3.13: Apportioning Values for Razorbill During the Breeding Season

SPA	Colony count (Burnell <i>et al.</i> , 2023)	Number of breeding adults (individuals)	Distance to the Array Area (km)	Proportion of foraging range at sea	Resulting weighting	Apportioning value
Forth Islands	5,695	7,631	115.07	0.401	0.094	0.064
Fowlsheugh	14,063	18,844	51.30	0.592	0.790	0.536
St Abb's Head to Fast Castle	2,931	3,928	127.88	0.487	0.032	0.022
Troup, Pennan and Lion's Heads	4,518	6,054	107.04	0.663	0.052	0.035
Non-designated sites ¹	-	15,268	-	-	-	0.343

¹Non-designated colonies include non-SPA colonies and SPA colonies for which razorbill are not a qualifying feature and/or named within a qualifying seabird assemblage.

²The distance from the Array Area was measured to the Isle of May instead of the geometric centre.

Table 3.14: Apportioning Values for Razorbill During Migration and Winter

SPA	Migration			Winter		
	BDMPS population (no. of individuals)	SPA population within BDMPS (no. of individuals)	Apportioning value	BDMPS population (no. of individuals)	SPA population within BDMPS (no. of individuals)	Apportioning value
Cape Wrath	591,874	240	0.000	218,622	575	0.003
East Caithness Cliffs	591,874	41,875	0.071	218,622	9,375	0.043
Fair Isle	591,874	2,974	0.005	218,622	686	0.003
Flamborough and Filey	591,874	33,503	0.057	218,622	7,501	0.034
Flannan Islands	591,874	121	0.000	218,622	289	0.001
Forth Islands	591,874	8,794	0.015	218,622	1,969	0.009
Foula	591,874	1,219	0.002	218,622	281	0.001
Fowlsheugh	591,874	11,805	0.020	218,622	2,643	0.012
Handa	591,874	594	0.001	218,622	1,420	0.006
Mingulay and Berneray	591,874	1,163	0.002	218,622	2,781	0.013
North Caithness Cliffs	591,874	5,525	0.009	218,622	1,275	0.006
North Rona and Sula Sgeir	591,874	125	0.000	218,622	299	0.001
Rathlin Island	591,874	1,770	0.003	218,622	1,539	0.007
Shiant Isles	591,874	489	0.001	218,622	1,168	0.005
Skomer, Skokholm and the Seas off Pembrokeshire	591,874	690	0.001	218,622	600	0.003
St Abb's to Fast Castle	591,874	4,084	0.007	218,622	914	0.004
St Kilda	591,874	196	0.000	218,622	468	0.002
Troup, Pennan and Lion's Heads	591,874	5,839	0.010	218,622	1,307	0.006
West Westray	591,874	1,788	0.003	218,622	412	0.002

3.10 Puffin

3.10.1 Apportioning was carried out for impacts from displacement in puffin. Breeding season apportioning values for SPAs which include puffin as a qualifying feature or named as part of the seabird assemblage and are within foraging range of the Array Area are presented in Table 3.15. Apportioning weightings for non-designated breeding colonies are presented in Annex B. Apportioning values for the non-breeding season are presented in Table 3.16.

Table 3.15: Apportioning Values for Puffin During the Breeding Season

SPA	Colony count (Burnell <i>et al.</i> , 2023)	Number of breeding adults (individuals)	Distance to the Array Area (km)	Proportion of foraging range at sea	Resulting weighting	Apportioning value
Coquet Island	25,029	50,058	182.92	0.577	0.324	0.119
Farne Islands	43,752	87,504	150.62	0.588	0.822	0.301
Forth Islands	42,923	85,846	115.07	0.566	1.434	0.525
Hoy	430	860	233.21	0.803	0.002	0.001
North Caithness Cliffs	3,039	6,078	221.21	0.782	0.020	0.007
Non-designated sites ¹	-	18,477	-	-	-	0.047

¹Non-designated colonies include non-SPA colonies and SPA colonies for which puffin are not a qualifying feature and/or named within a qualifying seabird assemblage.

²The distance from the Array Area was measured to the Isle of May instead of the geometric centre.

Table 3.16: Apportioning Values for Puffin During the Non-breeding Season

SPA¹	BDMPS population (no. of individuals)	SPA population within BDMPS (no. of individuals)	Apportioning value
Coquet Island	231,957	12,858	0.055
Fair Isle	231,957	3,657	0.016
Farne Islands	231,957	41,624	0.179
Flamborough and Filey Coast	231,957	998	0.004
Forth Islands	231,957	64,820	0.279
Foula	231,957	7,686	0.033
Hermaness, Saxa Vord and Valla Field	231,957	8,083	0.035
Hoy	231,957	1,196	0.005
North Caithness Cliffs	231,957	333	0.001
Noss	231,957	274	0.001
Shiant Isles SPA	231,957	266	0.001
St Kilda	231,957	580	0.003
Sule Skerry and Sule Stack	231,957	243	0.001

¹SPA colonies with an apportioning value of 0.000 have been removed. For a full list of designated sites, see Annex B.

4 Discussion

4.1.1 Apportioning was carried out using the NatureScot (2018) approach for all species during the breeding season. During the non-breeding season, apportioning for the majority of species were carried out using information from the BDMPS presented in Furness (2015).

4.2 Results

4.2.1 Mortalities are expected to be widely distributed across designated SPAs for fulmar during the breeding season, with no SPAs expected to contribute more than 10% of individuals within the Array Area, and five designated SPAs contributing over 5%: East Caithness Cliffs SPA (8.3%), Hoy SPA (8.1%), North Caithness Cliffs SPA (6.7%), Fair Isle SPA (8.7%), and Buchan Ness to Collieston Coast SPA (6.0%). In both the winter and migration seasons, Fair Isle SPA had the highest apportioning values (Winter = 9.2%; Migration = 8.6%). The next highest apportioning values for fulmar during the winter and migration seasons are Hoy SPA (Winter = 6.1%, Migration = 5.7%), Fetlar SPA (Winter = 6.2%, Migration = 2.6%), East Caithness Cliffs (Winter = 4.4%, Migration = 4.4%) and North Caithness Cliffs SPA (Winter = 4.4%, Migration = 4.2%).

4.2.2 For gannet, the Forth Islands SPA was found to have the highest apportioning value across all three seasons: breeding season (79.8%), autumn migration (42.0%), and spring migration (45.7%). The only other apportioning value greater than 10% for gannet is Hermaness, Saxa Vord and Valla Field SPA during autumn migration (15.5%) and spring migration (20.1%).

4.2.3 Approximately one third of kittiwake mortalities during the breeding season are expected to impact individuals associated with Fowlsheugh SPA (33.7%), followed by Buchan Ness to Collieston Coast SPA (21.3%). During the autumn and spring migration, East Caithness Cliffs SPA had the highest apportioning values (Autumn = 9.3%, Spring = 11.1%), followed by Flamborough and Filey Coast SPA (Autumn = 8.6%, Spring = 10.4%).

4.2.4 For great black-backed gull, there were no designated SPAs with connectivity to the Proposed Development. The highest apportioning value for the non-breeding season for great black-backed gull was Calf of Eday SPA (1.4%), followed by Copinsay SPA (1.1%).

4.2.5 There were only two designated colonies with connectivity to the Proposed Development during the breeding and non-breeding season for herring gull: Buchan Ness to Collieston Coast SPA (18.1%), and Fowlsheugh SPA (13.9%).

4.2.6 There were no designated SPAs with connectivity to the Proposed Development during the breeding season for the Arctic tern. During the non-breeding season, mortalities were distributed across multiple SPAs meaning the most impacted colonies, such as Farne Islands SPA (3.3%) and Coquet Island SPA (2.1%), were relatively low.

- 4.2.7 For guillemot, there were only two designated SPAs with connectivity to the Proposed Development during the breeding and non-breeding season; Buchan Ness to Collieston Coast SPA (20.1%) and Fowlsheugh SPA (72.4%).
- 4.2.8 For razorbill, the majority of the breeding season impact was attributed to one SPA, Fowlsheugh SPA (53.6%). However, during the non-breeding season the number of mortalities attributed to each colony was much lower and more evenly spread, with the highest apportioning values attributed to East Caithness Cliffs SPA in winter (4.3%), and migration (7.1%).
- 4.2.9 For puffin, the highest apportioning values were attributed to Forth Islands SPA (52.5%), Farne Islands SPA (30.1%), and Coquet Island SPA (11.9%) during the breeding season. During the non-breeding season, the only SPAs to have an apportioning value of over 10% were the Forth Islands SPA (27.9%) and Farne Islands SPA (17.9%).
- 4.2.10 The apportioning values taken forward to apportion mortalities from displacement and CRM are shown in Table 4.1.

Table 4.1: Apportioning Values Used to Apportion Mortalities from Displacement and CRM Analysis. Only SPAs with an Apportioning Value Greater Than 0.000 for Either Season Have Been Presented

SPA	Breeding Season Apportioning Value	Non-breeding Season Apportioning Value ¹
Fulmar		
Buchan Ness to Collieston Coast	0.060	W = 0.004; M = 0.004
Calf of Eday	0.007	W = 0.006; M = 0.005
Cape Wrath	0.003	W = 0.000; M = 0.000
Clare Island	0.001	W = 0.000; M = 0.000
Cliffs of Moher	0.000	W = 0.001; M = 0.000
Copinsay	0.007	W = 0.005; M = 0.005
East Caithness Cliffs	0.083	W = 0.044; M = 0.044
Fair Isle	0.087	W = 0.092; M = 0.086
Fetlar	0.010	W = 0.062; M = 0.026
Flamborough and Filey Coast	0.002	W = 0.003; M = 0.003
Flannan Isles	0.002	W = 0.001; M = 0.001
Foula	0.017	W = 0.062; M = 0.058
Fowlsheugh	0.045	W = 0.001; M = 0.001
Handa	0.001	W = 0.000; M = 0.000
Hermaness, Saxa Vord and Valla Field	0.013	W = 0.022; M = 0.020
Hoy	0.081	W = 0.061; M = 0.057
Mingulay and Berneray	0.004	W = 0.001; M = 0.001
North Caithness Cliffs	0.067	W = 0.044; M = 0.042
North Rona and Sula Sgeir	0.003	W = 0.001; M = 0.000
Noss	0.009	W = 0.016; M = 0.015
Rousay	0.007	W = 0.003; M = 0.003
Shiant Isles	0.002	W = 0.001; M = 0.000
St Kilda	0.018	W = 0.009; M = 0.005

SPA	Breeding Season Apportioning Value	Non-breeding Season Apportioning Value ¹
Sumburgh Head	0.012	W = 0.001; M = 0.001
Troup, Pennan and Lion's Heads	0.037	W = 0.006; M = 0.006
West Westray	0.003	W = 0.002; M = 0.002
Gannet		
Ailsa Craig	-	A = 0.010; S = 0.000
Fair Isle	0.009	A = 0.025; S = 0.032
Flamborough and Filey Coast	0.027	A = 0.084; S = 0.091
Forth Islands	0.798	A = 0.420; S = 0.457
Grassholm	-	A = 0.014; S = 0.000
Hermaness, Saxa Vord and Valla Field	0.020	A = 0.155 ; S = 0.201
North Rona and Sula Sgeir	0.012	A = 0.011; S = 0.000
Noss	0.016	A = 0.062; S = 0.081
St Kilda	0.029	A = 0.068; S = 0.000
Sule Skerry and Sule Stack	0.014	A = 0.005; S = 0.000
Kittiwake		
Buchan Ness to Collieston Coast	0.213	A = 0.029; S = 0.035
Calf of Eday	0.000	A = 0.002; S = 0.002
Cape Wrath	-	A = 0.001; S = 0.001
Copinsay	0.001	A = 0.002; S = 0.002
East Caithness Cliffs	0.037	A = 0.093; S = 0.111
Fair Isle	-	A = 0.002; S = 0.002
Farne Islands	0.013	A = 0.008; S = 0.009
Flamborough and Filey Coast	0.032	A = 0.086; S = 0.104
Forth Islands	0.024	A = 0.007; S = 0.009
Foula	-	A = 0.001; S = 0.001
Fowlsheugh	0.337	A = 0.021; S = 0.026

SPA	Breeding Season Apportioning Value	Non-breeding Season Apportioning Value ¹
Hermaness, Saxa Vord and Valla Field	-	A = 0.001; S = 0.001
Hoy	0.000	A = 0.001; S = 0.001
Marwick Head	0.001	A = 0.001; S = 0.001
North Caithness Cliffs	0.006	A = 0.023; S = 0.028
North Colonsay and Western Cliffs	-	A = 0.001; S = 0.000
Noss	-	A = 0.001; S = 0.001
Rathlin Island	-	A = 0.001; S = 0.001
Rousay	0.000	A = 0.004; S = 0.005
St Abb's Head to Fast Castle	0.022	A = 0.008; S = 0.009
Sumburgh Head	-	A = 0.000; S = 0.001
Troup, Pennan and Lion's Heads	0.054	A = 0.034; S = 0.041
West Westray	0.002	A = 0.028; S = 0.033
Great black-backed gull		
Calf of Eday	-	0.014
Copinsay	-	0.011
East Caithness Cliffs	-	0.009
Hoy	-	0.003
Isles of Scilly	-	0.003
North Rona and Sula Sgeir	-	0.001
Herring gull		
Buchan Ness to Collieston Coast	0.181	0.182 ²
Fowlsheugh	0.139	0.140 ²
Arctic tern		
Auskerry	-	0.011
Coquet Island	-	0.021
Farne Islands	-	0.033

SPA	Breeding Season Apportioning Value	Non-breeding Season Apportioning Value ¹
Forth Islands	-	0.005
Papa Stour	-	0.018
Papa Westray (North Hill and Holm)	-	0.003
Rousay	-	0.001
Sumburgh Head	-	0.003
West Westray	-	0.008
Guillemot		
Buchan Ness to Collieston Coast	0.201	0.201
Fowlsheugh	0.724	0.726
Razorbill		
Cape Wrath	-	W = 0.003; M = 0.000
East Caithness Cliffs	-	W = 0.043; M = 0.071
Fair Isle	-	W = 0.003; M = 0.005
Flamborough and Filey	-	W = 0.034; M = 0.057
Flannan Islands	-	W = 0.001; M = 0.000
Forth Islands	0.064	W = 0.009; M = 0.015
Foula	-	W = 0.001; M = 0.002
Fowlsheugh	0.536	W = 0.012; M = 0.020
Handa	-	W = 0.006; M = 0.001
Mingulay and Berneray	-	W = 0.013; M = 0.002
North Caithness Cliffs	-	W = 0.006; M = 0.009
North Rona and Sula Sgeir	-	W = 0.001; M = 0.000
Rathlin Island	-	W = 0.007; M = 0.003
Shiant Isles	-	W = 0.005; M = 0.001
Skomer, Skokholm and the Seas off Pembrokeshire	-	W = 0.003; M = 0.001

SPA	Breeding Season Apportioning Value	Non-breeding Season Apportioning Value ¹
St Abb's Head to Fast Castle	0.022	W = 0.004; M = 0.007
St Kilda	-	W = 0.002; M = 0.000
Troup, Pennan and Lion's Heads	0.035	W = 0.006; M = 0.010
West Westray	-	W = 0.002; M = 0.003
Puffin		
Coquet Island	0.119	0.055
Fair Isle	-	0.016
Farne Islands	0.301	0.179
Forth Islands	0.525	0.279
Foula	-	0.033
Hermaness, Saxa Vord and Valla Field	-	0.035
Hoy	0.001	0.005
North Caithness Cliffs	0.007	0.001
Noss	-	0.001
Shiant Isles	-	0.001
St Kilda	-	0.003
Sule Skerry and Sule Stack	-	0.001

¹For species where more than one non-breeding season is presented in Furness (2015), multiple apportioning values are reported. 'A' indicates values for autumn migration, 'S' for spring migration, 'M' for migration seasons, and 'W' for winter.

²Once apportioned mortalities have been calculated, a correction of 0.675 is applied.

4.3 Methodology – Assumptions and Caveats

- 4.3.1 The methodology used to carry out apportioning within this report are underlined by various assumptions. For example, it is assumed that birds at sea are evenly distributed which is unlikely due to various factors such as patchy prey distributions. Moreover, it is assumed that breeding colonies are independent of each other and individuals can only be associated with one colony.
- 4.3.2 An alternative approach to non-breeding season apportioning has been used for gannet in other applications (e.g. Xodus, 2024; SSE Renewables, 2022; MacArthur Green, 2015). In these applications, tracking data presented in MacArthur Green (2015) has been used to estimate the number of individuals from each colony expected to travel through the Array Area during migration. The apportioning value is then calculated by dividing the number of individuals from a given SPA expected to travel through the Array Area by the total number of individuals expected to travel through the Array Area. It is expected that using this method would likely result in lower mortalities and impacts to survival rates for colonies, such as Fair Isle SPA and Noss SPA, where tracking data showed that only half of the population within the BDMPS are expected to travel over the Array Area during migration. Moreover, as there are low numbers of gannet present in the non-breeding season, as they migrate south, use of the alternative method would make minimal difference to the predicted impact during the non-breeding season.
- 4.3.3 The Scottish Government’s Ornithology Road Map (Scottish Government, 2022) gave high priority to increasing tracking studies as the resulting data are highly informative on breeding season foraging distribution. Studies reveal significant variation in distribution between colonies and between seasons, so it is important that insights from tracking are used to help add realism to the apportioning process.

4.4 Immature Proportions

- 4.4.1 For some species, such as kittiwake, not all immature age classes can be identified successfully from at-sea imagery collected during DAS. In the case of kittiwake, this could potentially lead to an underestimation of the immature proportion as older immature individuals (two- or three-year old) are more likely to show affinity to natal waters.
- 4.4.2 To account for this the approach described in Section 2.3 was applied. However, this method could still lead to an underestimation of the number of immatures, and therefore an overestimation of the number of adults carried through to assessment.

References

- Bradbury, G., Trinder, M., Furness, B., Banks, A. N., Caldow, R. W. G. and Hume, D. (2014). Mapping Seabird Sensitivity to OWFs. PLoS ONE, 9(9).
- Buckingham, L., Bogdanova, M.I., Green, J.A., Dunn, R.E., Wanless, S., Bennett, S., Bevan, R.M., Call, A., Canham, M., Corse, C.J., Harris, M.P., Heward, C.J., Jardine, D.C., Lennon, J., Parnaby, D., Redfern, C.P.F., Scott, L., Swann, R.L., Ward, R.M., Weston, E.D., Furness, R.W., Daunt, F. (2022). Interspecific variation in non-breeding aggregation: a multi-colony tracking study of two sympatric seabirds. Marine Ecology Progress Series. 684: 181-197.
- Burnell, D., Perkins, A.J., Newton, S.F., Bolton, M., Tierney, T.D. & Dunn, T.E., (2023). Seabirds Count: a census of breeding seabirds in Britain and Ireland (2015 – 2021). Lynx Nature Books, Barcelona.
- Butler, A., Carroll, M., Searle, K., Bolton, M., Waggitt, J., Evans, P., Rehfisch, M., Goddard, B., et al. (2020). Attributing seabirds at sea to appropriate breeding colonies. Scottish Marine and Freshwater Science 11(8). Marine Scotland Science.
- Coulson, J.C. (2011). The Kittiwake. T and AD Poyser, London, UK.
- Furness, R.W. (2015). Non-breeding season populations of seabirds in UK waters: Population sizes for Biologically Defined Minimum Population Scales (BDMPS). Natural England Commissioned Reports, No. 164.
- Horswill, C. and Robinson, R.A. (2015). Review of seabird demographic rates and density dependence. JNCC Report No. 522.
- MacArthur Green (2015). *East Anglia THREE. Information for Habitats Regulations Assessment. Appendix 3: Apportioning of the Flamborough Head and Filey Coast SPA Gannet Population among North Sea Offshore Windfarms.* Available at: https://nsip-documents.planninginspectorate.gov.uk/published-documents/EN010079-002687-ExA;%20FurtherWQApp23.1;%2010.D4.6_EA3%20HRA%20Appendix%203.pdf Accessed on: 22 August 2025.
- Marine Scotland (2017a). *Marine Scotland - Licensing Operations Team Scoping Opinion. Addendum: Ornithology. Scoping Opinion for Inch Cape Offshore Windfarm – Revised Design Parameters – Ornithology.* Available at: <https://marine.gov.scot/sites/default/files/00523413.pdf>. Accessed on: 19 August 2025.
- Marine Scotland (2017b). *Marine Scotland - Licensing Operations Team Scoping Opinion. Scoping Opinion For The Proposed Section 36 Consent And Associated Marine Licence Application For The Revised Seagreen Phase 1 Offshore Project.* Available at: https://marine.gov.scot/sites/default/files/00524860_1.pdf. Accessed on: 19 August 2025.
- MD-LOT (2024). *Scoping Opinion – Bowdun Offshore Wind Farm.* Marine Directorate – Licensing Operations Team. Available at: https://marine.gov.scot/sites/default/files/scoping_opinion_17.pdf Accessed on: 01 May 2025.
- NatureScot. (2018). *Interim Guidance on apportioning impacts from marine renewable developments to breeding seabird populations in SPAs.* Available at: <https://www.nature.scot/doc/interim-guidance-apportioning-impacts-marine-renewable-developments-breeding-seabird-populations>. Accessed on: 19 August 2025.
- NatureScot. (2023a). *Guidance Note 3: Guidance to support Offshore Wind applications: Martine Birds – Identifying theoretical connectivity with breeding site Special protection areas using breeding season foraging ranges.* Available at: <https://www.nature.scot/doc/guidance->

[note-3-guidance-support-offshore-wind-applications-marine-birds-identifying-theoretical](#). Accessed on: 19 August 2025.

NatureScot. (2023b). *Guidance Note 4: Guidance to Support Offshore Wind Applications: Ornithology – Determining Connectivity of Marine birds with Marine Special protection Areas and Breeding Seabirds from Colony SPAs in the Non-Breeding Season*. Available at: <https://www.nature.scot/doc/guidance-note-4-guidance-support-offshore-wind-applications-ornithology-determining-connectivity> Accessed on: 19 August 2025.

Olsen, K.M. and Larsson, H. (2003). *Gulls of Europe, Asia and North America*. Christopher Helm, London.

Scottish Government (2020). *Sectoral Marine Plan for Offshore Wind Energy*. Available at: <https://www.gov.scot/binaries/content/documents/govscot/publications/strategy-plan/2020/10/sectoral-marine-plan-offshore-wind-energy/documents/sectoral-marine-plan-offshore-wind-energy/sectoral-marine-plan-offshore-wind-energy/govscot%3Adocument/sectoral-marine-plan-offshore-wind-energy.pdf> Accessed on: 19 August 2025.

Scottish Government (2022). *Sectoral Marine Plan: roadmap of actions*. Available at: [Sectoral Marine Plan: roadmap of actions - gov.scot](#). Accessed on: 02 April 2026.

SSE Renewables (2022). *Berwick Bank Wind Farm Offshore Environmental Impact Assessment. Appendix 11.5: ornithology Apportioning Technical Report*. Available at: <https://marine.gov.scot/sites/default/files/beae821.pdf> Accessed on: 19 August 2025.

Walsh, P.M., Halley, D.J., Harris, M.P., del Nevo, A., Sim, I.M.W. and Tasker, M.L. (1995). *Seabird monitoring handbook for Britain and Ireland*. JNCC / RSPB / ITE / Seabird Group, Peterborough. ISBN 1 873701 73 X

Woodward, I., Thaxter, C.B., Owen, E. and Cook, A.S.C.P. (2019). Desk-based revision of seabird foraging ranges used for HRA screening. BTO research report No. 724.

Xodus (2024). *Cenos EIA. Appendix 24 – Apportioning Report*. Available at: https://marine.gov.scot/sites/default/files/cenos_eia_vol.4_-_a24_-_apportioning_report_redacted.pdf Accessed on: 19 August 2025.

ANNEX A. COLONY DISTANCE FROM THE ARRAY AREA

A1.1.1 This annex contains the distances used to determine whether seabird SPA’s and non-SPA colonies have connectivity with the Bowdun Offshore Wind Farm (the ‘Proposed Development’) and the distances used during breeding season apportioning calculations. To determine connectivity, the distance from the closest edge of the Array Area to the closest edge or point of the SPA/non-SPA colony was measured. Whereas the distances from the centre of the Array Area to the centre of the SPA/non-SPA colony were used during apportioning calculations.

Table A1.1: Distance of Each SPA and non-SPA Seabird Breeding Colony Included in Apportioning Calculations

Colony	Closest Distance from the Edge of the Array Area to the Closest Edge or Point of the SPA/non-SPA Colony (km)	Centre of the Array Area to the Centre of the SPA/non-SPA Colony (km)
Findon Ness - Hare Ness	37.92	45.97
Girdle Ness to Hare Ness	37.92	45.52
38.3347.05 Burn of Daff	39.06	46.40
South Aberdeenshire - Tysties	37.92	45.97
Newtonhill - Hall Bay	39.79	48.36
Ythan Estuary, Sands of Forvie and Meikle Loch SPA	40.20	52.18
Newton Hill	40.46	49.09
Fowlsheugh SPA	40.93	51.30
Hall Bay to Craigeven Bay	41.02	50.05
Stonehaven to Wine Cove	42.11	51.00
Buchan Ness to Collieston Coast SPA	43.17	55.88
Catterline to Inverbervie	43.80	55.04
Aberdeen City	45.86	53.20
Inverbervie to St Cyrus	49.65	58.60
Westhill, Loch of Skene, Garlogie Gas Station and Leuchar	53.09	60.69

Colony	Closest Distance from the Edge of the Array Area to the Closest Edge or Point of the SPA/non-SPA Colony (km)	Centre of the Array Area to the Centre of the SPA/non-SPA Colony (km)
Peterhead	53.52	64.17
Loch of Skene SPA	56.22	64.64
St Cyrus NNR	60.19	69.06
St Fergus	63.17	73.21
Montrose	64.18	73.21
Inverurie	64.19	71.49
Montrose Basin SPA	65.49	76.72
Montrose to Lunan Bay	64.92	74.99
Fishtown of Usan to River North Esk	65.22	74.41
Lunan Bay to Arbroath	69.54	81.90
Craigoshina	74.50	83.47
Brechin	74.93	84.21
Transco Installations and Birse	75.89	84.56
Forest of Birse	78.20	86.92
Fraserburgh	79.82	90.15
Glen Tanar SPA	80.75	94.12
Sandhaven	82.98	93.06
Loch of Strathbeg SPA	83.37	93.46
Rosehearty to Bay of Cullen	85.32	107.63
Muir of Dinnet SPA	87.09	96.61
Firth of Tay and Eden Estuary SPA	90.05	119.12
Forfar	91.46	101.24
Correen Hills	92.38	100.50

Colony	Closest Distance from the Edge of the Array Area to the Closest Edge or Point of the SPA/non-SPA Colony (km)	Centre of the Array Area to the Centre of the SPA/non-SPA Colony (km)
Troup, Pennan and Lion's Heads SPA	96.95	107.04
Teremny	98.50	106.75
Firth of Forth SPA	98.74	157.43
Loch of Kinnordy SPA	99.02	108.97
Atton	100.07	109.04
Fife Ness to St Andrews	102.83	112.51
Caenlochan SPA	103.19	119.36
Tips of Corsemaul and Tom Mor SPA	104.24	112.72
Lochnagar SPA	104.37	116.86
Forth Islands SPA (Isle of May)	105.41	115.07
Loch of Lintrathen SPA	106.48	116.66
Ballochbuie SPA	107.32	119.89
Cameron Reservoir SPA	109.53	119.90
Portsoy to Cullen	116.52	129.32
St Abb's Head to Fast Castle SPA	117.18	127.88
Forth Islands SPA (Bass Rock)	118.26	127.89
Forest of Clunie SPA	118.57	137.51
St Abbs to Eyemouth	118.65	129.28
Natural Arches -	121.35	130.61
Eyemouth to Burnmouth	121.42	131.19
Dunglass to Fast Castle	121.47	130.74
Portknockie	124.83	134.91
Border to Burnmouth	125.47	135.16

Colony	Closest Distance from the Edge of the Array Area to the Closest Edge or Point of the SPA/non-SPA Colony (km)	Centre of the Array Area to the Centre of the SPA/non-SPA Colony (km)
Strathlene to Portknockie	126.50	137.21
Berwick to Scottish Border	128.12	137.02
Traprain Law SSSI	129.17	138.73
Anagach Woods SPA	131.34	140.80
Northumbria Coast SPA	133.18	184.34
Lindisfarne SPA	134.95	148.61
Loch Leven SPA	140.11	151.66
Farne Islands SPA	140.24	150.62
Carr Craig, Eyebroughy and Haystack	142.29	156.44
Vane Farm RSPB Reserve to Cock Law	143.65	153.27
Greenlaw Moor SPA	144.13	154.13
Bamburgh Castle, Bamburgh	145.13	153.07
Holburn Lake & Moss SPA	146.47	154.73
Bradda Quarry	147.02	154.92
Imperial Dock Lock, Leith SPA	147.83	157.58
Seahouses	147.92	155.93
Fala Flow SPA	150.40	160.94
Edinburgh	150.66	163.32
Moray and Nairn Coast SPA	152.12	162.21
Inchgarvie and Forth Rail Bridge	156.22	165.92
Hopeman Bay	156.43	168.34
Din Moss - Hoselaw Loch SPA	157.24	166.69
Howick - Cullornose Point - Dunstanburgh Castle Point	157.81	168.21

Colony	Closest Distance from the Edge of the Array Area to the Closest Edge or Point of the SPA/non-SPA Colony (km)	Centre of the Array Area to the Centre of the SPA/non-SPA Colony (km)
Gladhouse Reservoir SPA	162.13	173.09
Loch Spynie SPA	162.80	172.89
Coquet Island SPA	174.24	182.92
Westwater SPA	176.03	186.07
East Caithness Cliffs SPA	180.44	190.53
Shandwick to Portmahomack	183.46	194.32
Caithness - Wick Bay to Freshwick Bay	185.84	200.27
Caithness and Sutherland Peatlands SPA	186.35	196.44
Darnaway and Lethen Forest SPA	186.42	196.51
North Sutor to Shandwick	188.41	199.39
South Sutor	190.81	201.01
Brora	192.54	202.63
Dornoch Firth and Loch Fleet SPA	193.84	203.93
Kilmuir to Eathie - Black Isle	194.82	205.90
Caithness Lochs SPA	195.47	205.56
Blyth Power Station	196.08	204.23
Dunrobin	196.24	206.32
South East Sutherland / Alness Bay Ross-shire	199.37	212.95
Little Skerry	201.13	211.21
River Tyne to Seaton Sluice	201.87	213.56
Langholm - Newcastleton Hills SPA	202.61	219.34
Loch Eye SPA	203.18	213.27
Inner Moray Firth SPA	203.31	213.40

Colony	Closest Distance from the Edge of the Array Area to the Closest Edge or Point of the SPA/non-SPA Colony (km)	Centre of the Array Area to the Centre of the SPA/non-SPA Colony (km)
Cromarty Firth SPA	206.37	216.46
Loch Flemington SPA	206.76	216.85
Melvich to Duncansby Stacks SSSI	208.67	237.99
South Ronaldsay	209.96	224.77
Pentland Firth Islands SPA	210.86	220.95
North Caithness Cliffs SPA	211.12	221.21
South Ronaldsay (South East)	211.22	221.30
Morangie Forest SPA	211.48	221.57
Strath Carnaig and Strath Fleet Moors SPA	214.15	224.24
Copinsay SPA	214.50	228.29
South Ronaldsay (West)	216.98	227.06
Burray	217.34	229.35
Lairg and Strath Brora Lochs SPA	217.82	227.91
East Mainland Coast, Shetland SPA	217.87	227.95
Holm	218.29	229.32
Holm, Deerness and Tankerness	218.61	229.29
Hoy and Southwalls	219.02	230.83
Switha SPA	219.17	229.25
Hoy and South Walls - Tysties	219.59	229.79
Glimps Holm	219.84	230.33
Flotta & Calf of Flotta	220.03	231.73
South Walls	220.21	230.29
Hunda	220.71	230.79

Colony	Closest Distance from the Edge of the Array Area to the Closest Edge or Point of the SPA/non-SPA Colony (km)	Centre of the Array Area to the Centre of the SPA/non-SPA Colony (km)
Deerness	220.92	232.97
Rerwick Head to Mirkady Point	223.02	236.89
Calf of Flotta	223.08	233.16
Hoy SPA	223.12	233.21
Scapa Bay to St. Marys	223.38	237.26
Novar SPA	224.07	234.16
Fara	224.74	234.82
Rysa Little and Cava	228.03	238.79
Auskerry SPA	229.26	240.16
Bay of Berstane to Rerwick Head Tankerness	229.44	240.31
Swanbister - Scapa Bay, West Mainland	230.50	241.28
West Mainland (Houton - Stenness Hills)	231.19	241.95
Bay of Meil, Head Of Holland	231.97	242.36
Finstown and Kirkwall	233.19	243.27
Ireland - Houton Head (near gun-replacement)	233.64	246.10
Stronsay	233.76	245.62
Shapinsay (Coastal)	233.88	247.36
Castle Loch, Lochmaben SPA	234.02	243.96
Carness to Skerry of Work, St Ola	234.42	244.51
Shapinsay	234.80	244.89
Orkney Mainland Moors SPA	234.91	244.99
Cromwell Fort to Point of Carness	235.08	245.16
Tingwall to Hatston	235.30	250.47

Colony	Closest Distance from the Edge of the Array Area to the Closest Edge or Point of the SPA/non-SPA Colony (km)	Centre of the Array Area to the Centre of the SPA/non-SPA Colony (km)
Graemsay	235.76	247.28
Ben Wyvis SPA	236.02	246.11
Helliar Holm	236.03	246.11
Teesmouth and Cleveland Coast SPA	237.30	256.85
Yesnaby - Ness Point, Stromness	239.02	252.73
West Mainland (Inland) - HY31	239.14	249.23
Stromness	239.24	249.46
Brig O' Waithe to Hamnavoe, Stromness	239.47	250.07
Grass Holm	240.45	250.67
Gairsay, Hen of Gairsay, Boray Holm, Sweyn Holm	241.81	253.28
Linga Holm	242.43	252.66
Stromness Area, Hundland	242.43	259.88
Papa Stronsay	243.19	253.27
Green Holms	244.67	254.76
Eday	245.11	256.10
West Mainland	245.48	258.70
Holm of Huip and Little Linga Holm	245.55	255.71
Mousland	245.75	256.07
Woodwick House to Tingwall Pier	246.18	256.64
Wyre	246.69	256.78
Point of Hisber to Woodwick House	247.16	258.80
Holms of Spurness	247.28	257.47
Egilsay	247.40	258.65

Colony	Closest Distance from the Edge of the Array Area to the Closest Edge or Point of the SPA/non-SPA Colony (km)	Centre of the Array Area to the Centre of the SPA/non-SPA Colony (km)
Yesnaby to Marwick (West Mainland)	247.41	260.08
West Mainland (Coastal Sites)	248.57	263.26
Rousay Coast	249.02	259.10
East Sanday Coast SPA	249.31	264.33
Rousay - South East	249.40	260.17
Sanday - Stove to Kettletoft	249.61	261.53
Rousay - South and Central	249.64	261.81
Sanday - Spurness	249.90	260.65
Sanday	250.04	261.41
Costa Head	252.74	264.95
Rousay - Central	253.38	263.92
Loch of Banks and The Loons	253.39	263.47
Faray, Holm of Faray and Rusk Holm	253.46	263.55
Sanday - Cata Sand	254.16	264.27
Rousay - Saviskaill Bay Area	254.23	264.59
Marwick Head SPA	254.87	264.96
Costa Head ("Inland")	255.85	265.93
Rousay SPA	256.09	266.18
Westray - Rapness	256.36	266.72
Sanday - Tofts Ness	256.52	266.60
Red Holm	256.64	266.72
Wart Holm	256.90	266.98
Birsay Cliffs - Point of Buckquoy to Loop of Cruie	257.00	267.34

Colony	Closest Distance from the Edge of the Array Area to the Closest Edge or Point of the SPA/non-SPA Colony (km)	Centre of the Array Area to the Centre of the SPA/non-SPA Colony (km)
Brough of Birsay	258.12	268.20
Westray - Swartmill to Rapness	258.43	268.51
Saltburn Coast	259.49	267.82
Westray	259.58	271.99
Sanday - North and Holms of Ire	259.74	270.02
North Ronaldsay	261.08	273.70
Boulby Cliffs	261.62	269.95
Staithe to Sandsend	263.01	274.60
Butt of Lewis to Gress - Lewis	264.39	274.43
Westray - Central	264.51	274.59
Smoo to Melvich	264.65	294.35
North York Moors SPA	265.28	288.21
Calf of Eday SPA	265.66	275.74
N.Yorks Inland Gulls	266.92	275.22
Papa Westray	267.19	278.46
Westray and adjacent Holms - Tysties	268.11	278.19
Westray - North Hill and Loch of Burness	268.26	278.34
West Westray SPA	268.75	278.84
Westray - Aikerness	269.87	280.53
Westray - North West	270.32	280.41
Fair Isle SPA	270.49	285.11
Whitby to Robin Hood's Bay	271.27	280.46
Ravenscar to Robin Hood's Bay	277.33	288.87

Colony	Closest Distance from the Edge of the Array Area to the Closest Edge or Point of the SPA/non-SPA Colony (km)	Centre of the Array Area to the Centre of the SPA/non-SPA Colony (km)
Papa Westray (North Hill and Holm) SPA	279.17	289.25
North Sutherland Islands	282.64	295.60
North Sutherland Coastal Islands SPA	285.58	295.66
Scalby to Rocky Point	290.65	298.98
Sule Skerry and Sule Stack SPA	295.55	305.64
Scarborough to Osgodby Point	295.85	304.91
Flamborough and Filey Coast SPA	300.38	321.22
Faraid Head/ Balnakeil	307.72	318.71
Sumburgh Head SPA	308.75	321.31
Horse Island, Colsay, Little and Ladies Holm to Fitful Head	310.20	321.70
Sumburgh	310.69	322.26
Sumburgh to Peerie Voe of Spiggie	310.70	323.67
Cape Wrath SPA	311.08	321.17
Fitful	313.70	324.72
Huesbreck	320.31	331.21
Flamborough Head South	321.69	330.01
Bridlington	321.75	330.06
Boddam to Cumlewick Ness	324.03	335.12
No Ness to Levenwick and Boddam to Virkie	324.38	334.36
Hallilee	325.39	336.52
Cunningsburgh to Sandwick	325.79	338.13
Peerie Voe of Spiggie to St. Ninian's	327.04	337.12
St. Ninian's Isle	328.12	338.24

Colony	Closest Distance from the Edge of the Array Area to the Closest Edge or Point of the SPA/non-SPA Colony (km)	Centre of the Array Area to the Centre of the SPA/non-SPA Colony (km)
Midi Field	328.39	338.97
Greater Wash SPA	328.63	436.73
Droman to Geodha Ruadh na Fola	328.69	339.33
Bigton to Maywick	329.13	340.27
Maywick to St. Ninians Isle	329.47	340.09
Lower Derwent Valley SPA	329.97	347.25
Helliness	330.83	340.32
Ireland to Maywick	332.26	342.35
Maywick to Scalloway	333.60	344.24
Deepdale	333.66	344.25
West Burra - Shetland	336.79	349.79
Trondra (East Side), East Burra and Houss Ness	338.28	350.60
Bressay	338.73	349.27
Foula SPA	339.25	354.36
Muskna	339.64	350.22
Gulberwick to Fladdabister	339.87	354.19
Noss SPA	340.43	353.17
Hornsea Mere SPA	340.50	349.50
Scalloway Islands	340.90	354.22
Scalloway Islands South	341.20	350.80
Lerwick to Gulberwick	341.36	351.31
Trondra	342.16	352.24
Quarff	342.56	352.68

Colony	Closest Distance from the Edge of the Array Area to the Closest Edge or Point of the SPA/non-SPA Colony (km)	Centre of the Array Area to the Centre of the SPA/non-SPA Colony (km)
Bressay - North	342.71	353.28
Brindister	342.74	354.58
Skeld, Westerwick and Culswick	343.13	355.59
Mainland west: Terns	343.46	358.07
Tronda, East Burra and Houss Ness	344.22	354.30
Reawick	344.76	355.69
Weisdale Voe to Skeld	345.12	355.93
Loch Laxford	346.93	360.34
Saltness to Skeld	347.31	358.77
Hill of Dale	347.73	357.81
Hagmark Hill	348.71	359.31
Vaila	349.45	359.87
Tingwall	349.54	360.17
Scalloway to Semblister	349.78	364.29
Hill of Scarvister	350.04	360.39
Walls to Dales	350.24	360.00
Gremista	350.83	361.46
Walls - Dale	351.26	360.95
Handa SPA	351.31	361.40
Mid Walls	351.92	361.60
Mainland central: Terns	352.22	373.67
Scalloway Islands North	352.27	362.35
Stromness to Binnanness	353.31	363.39

Colony	Closest Distance from the Edge of the Array Area to the Closest Edge or Point of the SPA/non-SPA Colony (km)	Centre of the Array Area to the Centre of the SPA/non-SPA Colony (km)
Humber Estuary SPA	353.90	381.88
Tresta Voe - Weisdale Voe	355.50	365.58
Gruting	356.69	366.77
Effirth to Ness of Bixter	359.16	369.24
Thorne & Hatfield Moors SPA	361.04	374.93
Sandness	361.62	372.97
Aithsting	361.70	372.30
Dale to Huxter	361.96	372.04
Cnoc na Banaraich to Sound of Handa	362.59	372.98
Huxter to Brindister	363.37	374.59
West Burrafirth to Longa Ness	364.21	374.29
Loch of Vaara (Twatt)	364.62	375.44
Sound of Papa	365.09	375.67
Vementry Region	365.36	376.86
Tarbet, Badcail Bay and Edrachillis Bay	365.42	377.38
Holm of Melby, Forewick Holm, Crog Holm, Holm of Culsetter, Isle of Gunniste	365.42	375.51
Papa Little, Linga and Vementry Islets	365.87	376.94
Eddrachillis Bay	366.12	376.20
Nesting / Laxo to Housabister	368.47	378.99
Aith to Brae	369.14	381.17
Grobsness	370.06	380.15
North Mainland 25 - Voe to Logie Hill	370.36	380.44

Colony	Closest Distance from the Edge of the Array Area to the Closest Edge or Point of the SPA/non-SPA Colony (km)	Centre of the Array Area to the Centre of the SPA/non-SPA Colony (km)
Lunning/Levaneap	371.17	383.20
North Mainland 11 - Vidlin Voe to Lunning Sound	371.22	381.30
North Mainland 18 - Ladie Hill to Clubb of Mulla	371.28	381.36
Assynt Lochs SPA	371.54	381.63
Muckle Roe	371.59	382.96
North Mainland 22 - Black Hill to Boat Geo South	371.80	382.94
Whalsay: Western Islands	371.81	382.93
Out Skerries	372.16	384.11
East Loch Nedd to Rubha Creag Lomhair	372.45	382.67
Mainland north: Terns	372.49	387.95
North Rona and Sula Sgeir SPA	372.79	382.88
Lochs of Spiggie and Brow SPA	373.04	383.12
Muckle Roe Bridge to Mangaster	374.48	384.56
Stoer Headland	374.90	385.31
North Mainland 10 - Mangaster to Pinchdyke	375.00	386.09
Sullom Voe	375.07	389.35
Muckle Roe to Ura Firth	375.61	389.49
Port a' Ghleannain to Bay of Culkein	375.73	386.03
North Mainland 21 - Hamar Voe to Mangaster Voe	377.85	387.94
Bay of Stoer	380.30	390.38
North Mainland 3 - Mossbank to Fora Ness	380.59	391.22
North Mainland 19 - Ness of Hillswick	380.74	392.34
Hillswick	381.32	392.55

Colony	Closest Distance from the Edge of the Array Area to the Closest Edge or Point of the SPA/non-SPA Colony (km)	Centre of the Array Area to the Centre of the SPA/non-SPA Colony (km)
North Mainland 13 - Hamna Voe to Sand Voe	382.60	394.37
Heylor to Stenness	382.83	396.56
North Mainland 7 - Ay Wick to Firth	383.50	393.58
Stenness to Hillswick	383.84	394.51
Yell Sound Islands	384.01	399.80
Glasleac Island, Soyea Island, Rubha Rodha, Loch Roe	384.30	395.31
North Roe to Gluss Ayre	384.55	398.72
Inverpolly, Loch Urigill and nearby Lochs SPA	384.56	394.65
Yell - East Coast	387.45	397.53
Fraochlan to Lochinver	387.81	398.99
Yell & Yell Sound Islands: Terns	390.25	400.33
Enard Bay	390.99	402.64
Rubha Coigeach	392.23	403.11
North Mainland 24 - Paidland Vird to Stourl	393.15	404.24
Lewis Peatlands SPA	395.31	405.39
Ness and Barvas, Lewis SPA	396.87	406.96
Fethaland to North Roe	396.97	409.39
Ronas Voe to the Ness	397.83	408.42
North Mainland 6 - Fethaland to Burravoe	398.10	409.53
Sandvoe to Uyea	398.23	408.98
Summer Isles	398.42	411.83
Sandvoe to Fethaland	398.78	410.49
Ulsta to Whalefirth (Yell)	399.43	409.51

Colony	Closest Distance from the Edge of the Array Area to the Closest Edge or Point of the SPA/non-SPA Colony (km)	Centre of the Array Area to the Centre of the SPA/non-SPA Colony (km)
Ronas Hill to Uyea	399.54	409.62
Papa Stour SPA	401.31	411.39
Yell - Whale Firth to Gloup	403.19	420.50
Eye Peninsula - Lewis	403.39	419.48
Priest Island (Summer Isles) SPA	404.61	414.70
Meall Mor and Isle Martin	407.33	417.82
Whalefirth to Aastack	409.55	421.10
Loch Brooms	410.89	420.97
Unst - south west	412.85	425.48
Gloup Ness to Gutcher (N.W. Yell)	413.09	423.38
Gruinard Bay	415.68	425.76
Unst - Balta and Huney	415.75	425.83
Wester Ross Lochs SPA	417.76	427.85
Crossbost to Arnish - Lewis	420.24	431.81
Rubha Reidh Peninsula	422.03	437.69
Loch Ewe	423.63	433.72
The Taing - The Nev	423.66	433.74
Tolsta Chaolais to Bragair - Lewis	425.35	442.27
Ronas Hill - North Roe and Tingon SPA	425.44	435.53
SE Lewis	426.92	437.00
Loch Maree SPA	429.11	439.20
Kebock Head - Lewis	430.63	441.55
Shiant Isles SPA	433.58	443.67

Colony	Closest Distance from the Edge of the Array Area to the Closest Edge or Point of the SPA/non-SPA Colony (km)	Centre of the Array Area to the Centre of the SPA/non-SPA Colony (km)
Gibraltar Point SPA	433.86	444.31
Otterswick and Graveland SPA	436.09	446.18
The Wash SPA	436.31	461.41
Loch Gairloch	437.47	448.14
Campay - Lewis	440.46	450.54
Fetlar SPA	441.65	451.74
Bearasay - Lewis	442.28	452.36
Floday - Lewis	442.63	452.71
Old Hill - Lewis	442.68	452.77
Ramna Stacks and Gruney SPA	444.27	454.36
Bluemull and Colgrave Sounds SPA	444.48	454.57
Pabay Mor	445.36	455.45
Brenish to Valtos - Lewis	446.92	463.70
North Harris Mountains SPA	451.98	462.07
N Norfolk Coast SPA	452.59	466.63
Loch Torridon	452.60	463.73
Rubha Hunish	453.50	467.81
Applecross and Crowlin Islands	457.13	478.51
West Coast of the Outer Hebrides SPA	457.68	467.77
Hermaness, Saxa Vord and Valla Field SPA	459.96	470.05
Staffin	460.62	470.70
Rona	461.66	473.13
East Trotternish	467.13	479.50

Colony	Closest Distance from the Edge of the Array Area to the Closest Edge or Point of the SPA/non-SPA Colony (km)	Centre of the Array Area to the Centre of the SPA/non-SPA Colony (km)
Scarp Island - Harris	467.39	477.48
Skye	470.54	499.50
Raasay	473.84	483.93
Ascrib Islands	474.54	484.62
Flannan Isles SPA	475.63	485.72
Lewis and Harris - Tysties	476.98	487.06
West Inverness-shire Lochs SPA	477.27	487.36
Toe Head - Harris	478.01	488.09
Kyleakin to Portree	484.40	496.12
North Uist Machair and Islands SPA	485.03	495.12
Cuillins SPA	485.48	495.57
Skye: Meanish Pier to Druim Slachaidh	487.56	499.77
North Uist	492.05	505.33
Mointeach Scadabhaigh SPA	496.76	506.84
Skye: Hoe Point to Meanish	496.94	507.76
Skye - Strathaird	507.07	517.46
Outer Thames Estuary SPA	514.07	522.10
Great Yarmouth North Denes SPA	515.18	523.21
Aird and Borve, Benbecula SPA	515.24	525.33
Causamul, Haskeir, Boreray and Spuir	516.53	526.61
Broadland SPA	517.62	525.65
Breydon Water SPA	519.80	527.82
South Uist Machair and Lochs SPA	521.10	531.19

Colony	Closest Distance from the Edge of the Array Area to the Closest Edge or Point of the SPA/non-SPA Colony (km)	Centre of the Array Area to the Centre of the SPA/non-SPA Colony (km)
Isle of Eigg (Summer Isles)	533.32	543.41
Monach Islands SPA	533.44	543.52
Canna and Sanday SPA	535.19	545.28
South Uist	535.33	549.78
Rum SPA	535.81	545.90
Muck	540.24	551.39
Benacre to Easton Bavents SPA	541.91	549.94
Kilpheder and Smerclate, South Uist SPA	541.97	552.06
St Kilda SPA	542.90	552.99
Ardnamurchan and Loch Sunart	547.24	561.09
Minsmere-Walberswick SPA	551.09	559.12
Eoligarry, Barra SPA	552.66	562.75
Mull	559.49	581.80
Sandlings SPA	565.70	573.72
Sound of Pabbay	566.80	583.38
Alde-Ore Estuary SPA	570.39	578.42
Coll and Tiree SPA	572.61	582.70
Mingulay and Berneray SPA	575.60	585.69
Breckland SPA	575.67	583.70
Coll SPA	580.23	590.32
Deben Estuary SPA	581.87	589.90
Staffa	585.50	595.58
Coll (corncrake) SPA	586.33	596.42

Colony	Closest Distance from the Edge of the Array Area to the Closest Edge or Point of the SPA/non-SPA Colony (km)	Centre of the Array Area to the Centre of the SPA/non-SPA Colony (km)
Moidart and Ardgour SPA	587.16	597.25
Loch Shiel SPA	591.89	601.98
Tiree	591.90	601.98
Sleibhtean agus Cladach Thiriodh (Tiree Wetlands and Coast) SPA	592.16	602.25
Stour and Orwell Estuaries SPA	594.93	602.96
Stac Mhic Mhurchaidh, Reidh Eilean, Eilean Annraidh, Eilean Chalba	595.24	606.67
Bawdsey	597.30	605.32
North West Iona	598.07	608.15
Treshnish Isles SPA	599.38	609.46
South West Iona & Soa	599.72	611.26
Tiree (corncrake) SPA	600.18	610.27
Hamford Water SPA	603.13	611.16
Jura (West)	609.36	619.44
Ouse Washes SPA	610.42	618.45
Cnuic agus Cladach Mhuile SPA	611.70	621.78
Glas Eileanan SPA	618.50	628.59
Colne Estuary (Mid-Essex Coast Phase 2) SPA	618.66	626.69
Abberton Reservoir SPA	622.99	631.02
Blackwater Estuary (Mid-Essex Coast Phase 4) SPA	625.86	633.89
Dengie (Mid-Essex Coast Phase 1) SPA	629.97	638.00
Foulness (Mid-Essex Coast Phase 5) SPA	635.21	643.24

Colony	Closest Distance from the Edge of the Array Area to the Closest Edge or Point of the SPA/non-SPA Colony (km)	Centre of the Array Area to the Centre of the SPA/non-SPA Colony (km)
Jura, Scarba and the Garvellachs SPA	641.27	651.35
Crouch & Roach Estuaries (Mid-Essex Coast Phase 3) SPA	643.16	651.18
North Colonsay and Western Cliffs SPA	643.21	653.30
Oronsay and South Colonsay SPA	650.90	660.99
Thanet Coast & Sandwich Bay SPA	656.07	664.10
Benfleet and Southend Marshes SPA	657.61	665.64
Thames Estuary & Marshes SPA	663.88	671.91
The Swale SPA	665.36	673.39
Medway Estuary & Marshes SPA	666.14	674.17
Gruinart Flats, Islay SPA	667.29	677.38
Stodmarsh SPA	667.81	675.84
Rinns of Islay SPA	669.78	679.87
Knapdale Lochs SPA	670.12	680.21
Sound of Gigha SPA	679.51	689.60
Bridgend Flats, Islay SPA	680.71	690.80
Laggan, Islay SPA	684.16	694.25
St Margaret's	685.35	695.29
Eilean na Muice Duibhe (Duich Moss) SPA	686.82	696.91
Fan Bay	689.19	697.21
Langdon Cliffs	689.69	697.71
Islay - West (Port Askaig to Bruichladdich)	693.34	706.13
Shakespeare/Abbots Cliff	694.20	702.54
The Oa SPA	694.91	704.99

Colony	Closest Distance from the Edge of the Array Area to the Closest Edge or Point of the SPA/non-SPA Colony (km)	Centre of the Array Area to the Centre of the SPA/non-SPA Colony (km)
Kintyre Goose Roosts SPA	701.26	711.35
Islay - East (Port Askaig to Bowmore)	711.38	721.46
Arran Moors SPA	711.96	722.05
East Jura	713.53	724.91
Garvan Islands	716.08	726.16
Inishtrahull SPA	717.18	727.27
Dungeness, Romney Marsh and Rye Bay SPA	718.75	726.78
Renfrewshire Heights SPA	722.09	732.18
Ashdown Forest SPA	722.80	730.83
Malin Head SPA	726.80	736.89
Inner Clyde SPA	727.01	737.10
Loch Lomond SPA	729.37	739.46
Trawbreaga Bay SPA	730.20	740.28
Lenan Head to Tullagh Point	730.96	743.07
Rathlin Island SPA	731.84	741.93
Skerry Islands	734.24	848.21
Causeway Coast	734.33	749.65
Giant's Causeway Coast	734.33	745.84
North Antrim coast	736.31	746.75
Downhill	738.19	748.53
Sheep Island SPA	739.28	749.37
Binevenagh	739.55	751.38
Horn Head to Fanad Head SPA	740.19	750.28

Colony	Closest Distance from the Edge of the Array Area to the Closest Edge or Point of the SPA/non-SPA Colony (km)	Centre of the Array Area to the Centre of the SPA/non-SPA Colony (km)
Fanad Head SPA	742.33	752.42
Lough Foyle SPA	744.05	754.14
Black Cart SPA	745.87	755.95
East Antrim Coast	746.05	781.14
Craigaig	746.33	756.41
The Gauldrons	746.74	756.82
Largybaan	747.62	758.04
Greers Isle SPA	748.25	758.34
Antrim Hills SPA	748.44	758.53
Lough Foyle SPA	749.70	759.79
Tory Island SPA	750.76	760.85
Leckpatrick, S. of Torr Head	752.90	762.98
Arran	754.56	776.43
Mull of Kintyre	755.77	766.00
Inishbofin, Inishdooney and Inishbeg SPA	756.44	766.53
Lough Swilly SPA	756.65	766.74
Keil Point to Kilmanshennachan	758.62	770.42
Derryveagh And Glendowan Mountains SPA	759.49	769.58
Bute	759.50	777.01
Falcarragh to Meenlaragh SPA	760.85	770.94
The Bastard - Kintyre	762.08	772.26
Inchmarnock Island, Bute	762.13	772.21
Lough Fern SPA	763.62	773.71

Colony	Closest Distance from the Edge of the Array Area to the Closest Edge or Point of the SPA/non-SPA Colony (km)	Centre of the Array Area to the Centre of the SPA/non-SPA Colony (km)
Sanda Islands - Kintyre	764.55	774.63
West Donegal Islands SPA	768.97	779.06
Tory Island and Bloody Foreland	769.42	779.50
West Donegal Coast SPA	769.49	779.58
Muirkirk and North Lowther Uplands SPA	769.54	779.63
Holy Island	775.47	785.56
Little Cumbrae	775.76	785.84
Great Cumbrae Island	776.19	787.47
Hunterston	780.11	790.19
Gweedore Bay Islands	784.31	794.40
Seaford to Beachy Head SSSI	788.46	797.69
Illancrone and Inishkeeragh SPA	789.34	799.43
Ailsa Craig SPA	790.06	800.15
Larne Lough SPA	794.18	804.27
Larne Lough to Portmuck	794.64	806.75
Brighton to Newhaven Cliffs SSSI	795.41	806.68
Muck Island	796.26	806.34
Roaninish SPA	799.46	809.55
Inishkeel SPA	800.15	810.23
Drumshang to Heads of Ayr	800.38	811.25
Culzean Country Park - Sea cliffs	801.32	811.40
Bennane Lea to Games Loup	803.66	813.78
Pinbain Quarry - Kennedy's Pass	803.83	814.02

Colony	Closest Distance from the Edge of the Array Area to the Closest Edge or Point of the SPA/non-SPA Colony (km)	Centre of the Array Area to the Centre of the SPA/non-SPA Colony (km)
Sheskinmore Lough SPA	803.88	813.97
Blackhead	805.20	815.28
Loch Ryan	806.14	818.39
Whitehead	806.63	816.72
Belfast Lough SPA	807.65	817.74
Belfast Lough Open Water SPA	807.83	817.92
Glen App and Galloway Moors SPA	809.81	819.90
Starling Knowe to Downan Point	810.47	820.55
West Coast Wigtownshire	812.99	833.33
Outer Ards SPA	813.75	823.84
Copeland Islands SPA	817.78	827.87
Portpatrick	819.67	830.41
Castle Point to Portankill (Mull of Galloway) - Tysties	821.99	832.07
Loch of Inch and Torrs Warren SPA	823.09	833.18
Strangford Lough SPA	824.48	834.57
Rathlin O'Birne Island SPA	827.53	837.62
Arun Valley SPA	827.81	835.84
Inishduff SPA	828.51	838.60
Sligo Bay	837.28	863.61
Solent and Dorset Coast SPA	838.98	847.01
Port Mona, Devil's Bridge, Laggantalluch Head	846.78	858.16
Pagham Harbour SPA	848.23	856.26
Chichester and Langstone Harbours SPA	852.04	860.06

Colony	Closest Distance from the Edge of the Array Area to the Closest Edge or Point of the SPA/non-SPA Colony (km)	Centre of the Array Area to the Centre of the SPA/non-SPA Colony (km)
Lythe Mead to Carrick-Kee	854.17	864.26
Mull of Galloway	854.68	864.76
Solway Firth SPA	855.00	865.09
Inishmurray SPA	855.16	865.25
Loch Ken and River Dee Marshes SPA	858.45	868.54
Killough Bay SPA	858.55	868.64
DONEGAL BAY SPA	862.03	872.12
Ardboline Island and Horse Island SPA	864.07	874.15
Monreith Cliffs and Scar Rocks	864.43	880.10
Ballintemple and Ballygilgan SPA	864.46	874.55
Drumcliff Bay SPA	866.60	876.69
Sligo/Leitrim Uplands SPA	867.29	877.38
Durnesh Lough SPA	868.81	878.90
Portsmouth Harbour SPA	870.34	878.37
Aughris Head SPA	870.81	880.90
Cummeen Strand SPA	870.89	880.98
Solent & Southampton Water SPA	873.33	881.36
Downpatrick to Creevagh Heads	876.01	886.30
Killala Bay/Moy Estuary SPA	878.15	888.24
Isle of Wight	880.70	888.72
Pettigoe Plateau SPA	881.06	891.15
Sheddock Cliffs - Burrow Head	882.56	894.91
Pettigo Plateau Nature Reserve SPA	882.92	893.01

Colony	Closest Distance from the Edge of the Array Area to the Closest Edge or Point of the SPA/non-SPA Colony (km)	Centre of the Array Area to the Centre of the SPA/non-SPA Colony (km)
Lough Derg (Donegal) SPA	886.14	896.23
Beldog Harbour to Kid Island	886.64	898.19
West Island	888.56	900.70
New Forest SPA	891.65	899.68
Illanmaster SPA	892.24	902.33
Lough Neagh and Lough Beg SPA	892.29	902.38
South Island	894.56	910.38
North Island	895.59	908.28
Maggy's Leap to Newcastle	896.41	906.49
Lough Conn and Lough Cullin SPA	897.32	907.41
Maggy's Leap	897.39	907.47
Stags of Broadhaven SPA	898.26	908.35
Erris Head	898.65	910.12
Blacksod Bay/Broadhaven SPA	901.79	911.88
East Island	903.22	915.89
Meikle Ross & Little Ross	903.94	914.02
Owenduff/Nephin Complex SPA	907.29	917.37
Carrowmore Lake SPA	907.52	917.61
Barlocco	915.05	925.13
Carlingford Lough SPA	917.24	927.32
Avon Valley SPA	918.21	926.24
Mullet Peninsula SPA	919.22	929.31
Termoncarragh Lake and Annagh Machair SPA	919.37	929.46

Colony	Closest Distance from the Edge of the Array Area to the Closest Edge or Point of the SPA/non-SPA Colony (km)	Centre of the Array Area to the Centre of the SPA/non-SPA Colony (km)
Dorset Heathlands SPA	919.38	927.41
Carlingford Lough SPA	921.42	931.51
Inishglora and Inishkeeragh SPA	926.02	936.10
Dundalk Bay SPA	929.23	939.31
Inishkea Islands SPA	932.61	942.70
Poole Harbour SPA	932.70	940.73
Duvillaun Islands SPA	934.00	944.09
St Bees Head and Town	936.50	946.58
Morecambe Bay and Duddon Estuary SPA	937.20	947.29
Stabannan-Braganstown SPA	946.35	956.44
Boyne Estuary SPA	951.60	961.68
South Dorset Coast SSSI	954.24	964.23
Rockabill SPA	954.84	964.92
Liverpool Bay / Bae Lerpwl (England) SPA	955.17	965.25
Liverpool Bay SPA	955.17	965.25
Bills Rocks SPA	956.81	966.90
River Nanny Estuary And Shore SPA	957.06	967.14
River Boyne and River Blackwater SPA	959.91	970.00
Skerries Islands SPA	962.02	972.11
Clare Island SPA	965.62	975.71
Loughshinny to Killiney	966.75	991.43
Portland	968.12	977.88
Lambay Island SPA	969.28	979.37

Colony	Closest Distance from the Edge of the Array Area to the Closest Edge or Point of the SPA/non-SPA Colony (km)	Centre of the Array Area to the Centre of the SPA/non-SPA Colony (km)
Rogerstown Estuary SPA	969.78	979.87
Chesil Beach & the Fleet SPA	972.66	980.69
South West Islands	974.90	984.98
Malahide Estuary SPA	975.66	985.75
Anglesey Terns / Morwenoliaid Ynys Môn SPA	977.37	998.05
Inishturk Island	978.19	988.92
Glannau Ynys Gybi / Holy Island Coast SPA	979.27	989.36
Ireland's Eye SPA	979.97	990.06
Cross Lough (Killadoon) SPA	980.17	990.25
Baldoyle Bay SPA	981.01	991.10
Liverpool Bay / Bae Lerpwl (Wales) SPA	981.83	991.92
Howth Head Coast SPA	982.06	992.15
North Bull Island SPA	983.73	993.82
High Island, Inishshark and Davillaun SPA	984.67	994.76
Inishbofin, Omey Island and Turbot Island SPA	985.06	995.15
Burton Cliff, Burton Bradstock	985.65	993.67
West Bay - Bridport	986.87	994.89
South Dublin Bay and River Tolka Estuary SPA	988.36	998.45
Alderney	992.77	1,000.79
North Pennine Moors SPA	994.02	1,004.11
Dalkey Islands SPA	994.56	1,004.65
Illannanooon SPA	994.75	1,004.84
CRUAGH ISLAND SPA	995.21	1,005.30

Colony	Closest Distance from the Edge of the Array Area to the Closest Edge or Point of the SPA/non-SPA Colony (km)	Centre of the Array Area to the Centre of the SPA/non-SPA Colony (km)
Friar Island	995.23	1,005.31
Bowland Fells SPA	996.92	1,007.01
Leighton Moss SPA	998.03	1,008.12
Ribble & Alt Estuaries SPA	999.36	1,009.44
Lough Carra SPA	999.57	1,009.66
Ynys Seiriol / Puffin Island SPA	999.72	1,009.81
Traeth Lafan / Lavan Sands, Conway Bay SPA	1,002.35	1,012.44
Lough Mask SPA	1,002.60	1,012.69
Wicklow Mountains SPA	1,003.79	1,013.88
Connemara Bog Complex SPA	1,004.11	1,014.20
Bray	1,004.63	1,014.71
Lough Mask SPA	1,007.34	1,017.42
Slyne Head To Ardmore Point Islands SPA	1,009.06	1,019.15
Inland Gwynedd	1,009.55	1,019.63
Lough Corrib SPA	1,011.09	1,021.18
Sidmouth to Beer	1,011.47	1,024.10
The Murrough SPA	1,011.92	1,022.01
Poulaphouca Reservoir SPA	1,014.82	1,024.91
Llanddulas Quarries	1,015.83	1,025.99
Dulas Valley	1,017.74	1,027.82
Martin Mere SPA	1,019.52	1,029.60
Jersey	1,019.76	1,030.48
The Dee Estuary (Wales) SPA	1,020.33	1,030.42

Colony	Closest Distance from the Edge of the Array Area to the Closest Edge or Point of the SPA/non-SPA Colony (km)	Centre of the Array Area to the Centre of the SPA/non-SPA Colony (km)
Sark	1,020.64	1,029.46
Denbeighshire Lakes	1,022.53	1,032.61
Mersey Narrows & North Wirral Foreshore SPA	1,022.68	1,032.77
Brecqhou	1,022.81	1,030.83
The Dee Estuary SPA	1,022.96	1,033.05
Herm	1,023.08	1,031.10
The Dee Estuary (England) SPA	1,023.58	1,033.67
Dyserth Quarry	1,024.50	1,034.59
Straight Point and Otterton Ledge to Big Picket Rock	1,024.54	1,034.73
Jethou	1,025.07	1,033.09
Wicklow Head SPA	1,025.25	1,035.34
Lleyn Peninsula	1,026.42	1,042.31
East Devon Heaths SPA	1,028.37	1,036.40
Glannau Aberdaron ac Ynys Enlli / Aberdaron Coast and Bardsey Island SPA	1,034.26	1,044.35
Mersey Estuary SPA	1,034.96	1,045.05
Exe Estuary SPA	1,035.17	1,043.20
Guernsey	1,035.75	1,044.46
Migneint-Arenig-Dduallt SPA	1,035.76	1,045.85
Northern Cardigan Bay / Gogledd Bae Ceredigion SPA	1,036.56	1,046.65
Dawlish Warren to Teignmouth	1,039.53	1,048.14
Bellangare Bog SPA	1,039.58	1,049.67
Inishmore SPA	1,040.42	1,050.51

Colony	Closest Distance from the Edge of the Array Area to the Closest Edge or Point of the SPA/non-SPA Colony (km)	Centre of the Array Area to the Centre of the SPA/non-SPA Colony (km)
Mynydd Cilan, Trwyn y Wylfa ac Ynysoedd Sant Tudwal SPA	1,042.22	1,052.30
Babbacombe Bay	1,043.55	1,052.03
Northern End of Torbay	1,043.55	1,051.57
Berry Head to Sharkham Point SSSI	1,045.62	1,053.64
Sharkham Point to Start Point (South Hams)	1,048.54	1,063.35
Inner Galway Bay SPA	1,049.14	1,059.23
South Pennine Moors Phase 2 SPA	1,052.77	1,062.86
Berwyn SPA	1,055.31	1,065.40
Cregganna Marsh SPA	1,056.78	1,066.87
Friog	1,064.48	1,074.56
Rahasane Turlough SPA	1,065.07	1,075.16
Cliffs of Moher SPA	1,065.97	1,076.06
Salcombe to Start Point	1,069.44	1,077.46
Craig yr Aderyn (Bird's Rock) SPA	1,069.96	1,080.05
Cahore Marshes SPA	1,073.61	1,083.70
Coole-Garryland SPA	1,073.66	1,083.75
Plymouth to Berry Head Coastline	1,074.58	1,085.95
Slieve Aughty Mountains SPA	1,075.68	1,085.77
Peak District Moors (South Pennine Moors Phase 1) SPA	1,075.77	1,085.86
Bigbury Bay	1,075.91	1,084.69
Lough Rea SPA	1,076.40	1,086.49
Corofin Wetlands SPA	1,078.76	1,088.85
Dyfi Estuary / Aber Dyfi SPA	1,079.55	1,089.64

Colony	Closest Distance from the Edge of the Array Area to the Closest Edge or Point of the SPA/non-SPA Colony (km)	Centre of the Array Area to the Centre of the SPA/non-SPA Colony (km)
Mid-Clare Coast SPA	1,080.22	1,090.31
Lough Cutra SPA	1,081.57	1,091.66
Noss Mayo to Erme Estuary	1,082.78	1,090.80
Wexford Harbour and Slobs SPA	1,087.99	1,098.08
The Raven SPA	1,089.22	1,099.31
Ballyallia Lough SPA	1,090.01	1,100.09
Great Mew Stone (Island)	1,090.82	1,098.84
Tamar Estuaries Complex SPA	1,091.70	1,099.73
North East of Kilkee	1,091.71	1,102.25
Aberystwyth - Llanhystud	1,096.74	1,106.82
Illauonearaun SPA	1,096.78	1,106.87
River Shannon and River Fergus Estuaries SPA	1,097.39	1,107.48
Loop Head Peninsular	1,097.45	1,111.45
Elenydd - Mallaen SPA	1,098.92	1,109.01
Plymouth - Falmouth	1,098.95	1,116.96
Lough Derg (Shannon) SPA	1,099.02	1,109.11
Llanrhyslud - Llansanffraed	1,100.24	1,110.33
Loop Head SPA	1,102.57	1,112.66
Llansantffraid - Aberaeron	1,104.93	1,116.76
New Quay to Lochtyn	1,109.38	1,121.39
Gilfach yr halen	1,109.61	1,119.70
Lady's Island Lake SPA	1,113.55	1,123.64

Colony	Closest Distance from the Edge of the Array Area to the Closest Edge or Point of the SPA/non-SPA Colony (km)	Centre of the Array Area to the Centre of the SPA/non-SPA Colony (km)
Llangrannog to Penpeles (includes Tresaith SSSI and Aberporth)	1,114.26	1,125.43
Cardigan Island and Mwnt to Carreg Lydan	1,114.92	1,125.28
Bannow Bay SPA	1,115.93	1,126.01
Tacumshin Lake SPA	1,115.93	1,126.02
Stack's to Mullaghareirks, West Limerick Hills and Mount Eagle SPA	1,116.44	1,126.53
Kerry Head SPA	1,116.50	1,126.59
Newport to Poppit	1,116.90	1,129.61
Ballyteigue Burrow SPA	1,118.16	1,128.25
Stack's to Mullaghareirk Moutains, West Limerick Hills and Mount Eagle SPA	1,119.66	1,129.74
Keeragh Islands SPA	1,122.08	1,132.17
Saltee Islands SPA	1,124.58	1,134.66
Strumble Head to Fishguard to Newport	1,124.74	1,135.48
Tralee Bay Complex SPA	1,125.40	1,135.49
Stacks to Mullaghreirk Mountains, West Limerick Hills and Mount Eagle SPA	1,125.59	1,135.68
Strumble Head - Pwll Deri	1,125.85	1,137.48
Magharee Islands SPA	1,128.61	1,138.70
Falmouth Bay to St Austell Bay SPA	1,130.74	1,138.76
Aber Bach - Ynys Barry	1,131.26	1,142.53
DINGLE PENINSULA SPA	1,132.46	1,142.55
Abereiddy - Treginnnis, St Davids	1,133.78	1,144.38

Colony	Closest Distance from the Edge of the Array Area to the Closest Edge or Point of the SPA/non-SPA Colony (km)	Centre of the Array Area to the Centre of the SPA/non-SPA Colony (km)
Ramsey and St David's Peninsula Coast SPA	1,136.12	1,146.21
Bishop & Clerks and Ramsey	1,138.25	1,148.33
Stacks to Mullaghreirk Mountains, West Limerick Hills and Mount Eagle SPA	1,141.05	1,151.14
Little Haven to Newgale	1,145.24	1,158.42
Castlemaine Harbour SPA	1,149.89	1,159.98
Blasket Islands SPA	1,150.46	1,160.55
Skomer, Skokholm and the Seas off Pembrokeshire SPA	1,151.45	1,161.54
St Bride's Bay (S & SE)	1,152.63	1,162.83
Grassholm SPA	1,155.41	1,165.50
Iveragh Peninsula SPA	1,161.11	1,171.19
Killarney National Park SPA	1,163.17	1,173.26
Kilcolman Bog SPA	1,164.15	1,174.24
Castlemartin Coast SPA	1,164.82	1,174.91
Creadan Head to Foilakipeen	1,168.44	1,179.65
Cadgwith - Helford River (East Lizard)	1,169.83	1,180.21
Portally to Benlea Head	1,171.95	1,184.49
Eirk Bog SPA	1,175.21	1,185.30
Church Cove 2 - Cadgwith	1,175.28	1,183.64
Tramore Back Strand SPA	1,175.94	1,186.03
Housel to Church Cove 1	1,177.43	1,185.45
St Anne's Head (Renny Slip to Dale)	1,177.87	1,188.61
Mullaghanish to Mushermore Mountains SPA	1,178.14	1,188.22

Colony	Closest Distance from the Edge of the Array Area to the Closest Edge or Point of the SPA/non-SPA Colony (km)	Centre of the Array Area to the Centre of the SPA/non-SPA Colony (km)
Mullion Cliff to Predannack Cliff SSSI	1,180.27	1,188.50
Gunwallor Fishing Cove to Kynance Cove	1,180.49	1,188.81
Freshwater West to West Angle Bay	1,182.06	1,192.69
Puffin Island SPA	1,182.79	1,192.88
Mid-Waterford Coast SPA	1,183.00	1,193.08
Mount's Bay, Cornwall	1,183.69	1,194.16
Skelligs SPA	1,189.68	1,199.77
Cudden Point, Mount's Bay	1,190.36	1,198.38
Marazion Marsh SPA	1,191.20	1,199.23
The Gearagh SPA	1,192.27	1,202.36
Deenish Island and Scariff Island SPA	1,194.02	1,204.11
Barafundle to Giltar Point	1,198.88	1,214.15
Walmore Common SPA	1,199.04	1,209.12
West Penwith	1,199.26	1,231.34
Beara Peninsula SPA	1,202.59	1,212.68
Bae Caerfyrddin / Carmarthen Bay SPA	1,205.47	1,215.56
Helvick Head to Ballyquin SPA	1,208.33	1,218.42
Dungarvan Harbour SPA	1,209.70	1,219.79
Caldey Island	1,210.07	1,221.02
The Bull and the Cow Rock's SPA	1,210.66	1,220.75
Tenby to Amroth	1,211.12	1,221.23
Sheep's Head to Toe Head SPA	1,213.80	1,223.89
Courtmacsherry Bay SPA	1,221.05	1,231.13

Colony	Closest Distance from the Edge of the Array Area to the Closest Edge or Point of the SPA/non-SPA Colony (km)	Centre of the Array Area to the Centre of the SPA/non-SPA Colony (km)
Ardmore to Whiting Bay	1,222.69	1,233.78
Clonakilty Bay SPA	1,222.92	1,233.01
Sovereign Islands SPA	1,227.23	1,237.32
Galley Head to Duneen Point SPA	1,227.66	1,237.75
Seven Heads SPA	1,228.25	1,238.34
Blackwater Estuary SPA	1,229.04	1,239.13
Old Head of Kinsale SPA	1,230.74	1,240.82
Whiting Bay to Youghal Harbour	1,230.89	1,240.97
Burry Inlet SPA	1,232.12	1,242.21
Cork Harbour to Youghal Harbour	1,233.98	1,259.12
Ballymacoda Bay SPA	1,234.14	1,244.23
Blackwater Callows SPA	1,235.77	1,245.86
Lundy	1,239.97	1,250.06
Ballycotton Bay SPA	1,244.41	1,254.50
Isles of Scilly SPA	1,249.23	1,257.26
Cork Harbour SPA	1,254.77	1,264.86
Gower	1,254.99	1,265.07
Godrevy Head to St Agnes SSSI	1,258.44	1,273.78
Hayle - Chapel Porth	1,259.79	1,269.73
Clovelly to Hartland Quay	1,260.89	1,273.17
Welcombe Mouth to Hartland Quay	1,261.68	1,272.85
Morte Point - Bull Point	1,262.98	1,273.06
North Devon Coast	1,265.56	1,283.10

Colony	Closest Distance from the Edge of the Array Area to the Closest Edge or Point of the SPA/non-SPA Colony (km)	Centre of the Array Area to the Centre of the SPA/non-SPA Colony (km)
Penally to Cornakey	1,267.61	1,289.31
Ringabella to Kinsale	1,269.22	1,282.60
West Exmoor Coast and Woods SSSI	1,272.69	1,288.80
Chapel Porth to Perranporth	1,273.78	1,283.22
Ligger Point to Porth	1,280.66	1,292.20
Tintagel Cliffs SSSI	1,284.19	1,319.71
Trevelgue Head to Merope Rocks	1,289.15	1,301.72
Glenthorne to Ivy Stone	1,290.57	1,300.66
Nash Point	1,295.40	1,305.85
North Cornwall Coast	1,299.60	1,309.90
Galley Head / Seven Heads	1,304.58	1,314.66
Round Hill and Pentireglaze, North Cornwall	1,307.03	1,315.05
Pentire Peninsula SSSI	1,307.43	1,315.65
Com Head - North Cornwall	1,308.28	1,316.30
Carnweather Point, North Cornwall	1,309.07	1,317.09
Trevan Point, North Cornwall	1,309.88	1,317.89
Doyden Point, North Cornwall	1,310.30	1,318.32
Severn Estuary (Wales) SPA	1,311.29	1,321.38
Reedy Cliff, North Cornwall	1,311.65	1,319.67
Varley Head, North Cornwall	1,312.21	1,320.23
Pine Haven, North Cornwall	1,312.64	1,320.66
Port Isaac, North Cornwall	1,313.39	1,321.41
Tresungers Point, North Cornwall	1,314.30	1,322.32

Colony	Closest Distance from the Edge of the Array Area to the Closest Edge or Point of the SPA/non-SPA Colony (km)	Centre of the Array Area to the Centre of the SPA/non-SPA Colony (km)
Bounds Cliff - North Cornwall	1,315.30	1,323.32
Delabole Point - North Cornwall	1,316.34	1,324.36
Trerubies Cove - North Cornwall	1,317.59	1,325.61
Severn Estuary (England) SPA	1,318.63	1,328.72
Severn Estuary SPA	1,318.63	1,328.72
Dunderhole Point, North Cornwall	1,321.39	1,329.40
Lye Rock, North Cornwall	1,323.38	1,331.40
Baltimore to Glandore Harbour	1,327.73	1,340.57
Somerset Levels & Moors SPA	1,337.43	1,347.52
Chew Valley Lake SPA	1,350.99	1,361.08
Cape Clear Island	1,356.47	1,367.07
Brow Head/Mizen Head	1,370.21	1,380.30

ANNEX B. FULL BREEDING SEASON APPORTIONING RESULTS

B1.1.1 This annex contains the full results of breeding season apportioning, including non-designated colonies, for nine species:

- Arctic tern *Sterna paradisaea*;
- black-legged kittiwake *Rissa tridactyla*, hereafter ‘kittiwake’;
- herring gull *Larus argentatus*, hereafter ‘herring gull’;
- great black-backed gull *L. marinus*;
- Atlantic puffin *Fratercula arctica*, hereafter ‘puffin’;
- razorbill *Alca torda*;
- common guillemot *Uria aalge*, hereafter ‘guillemot’;
- northern fulmar *Fulmarus glacialis*, hereafter ‘fulmar’; and
- northern gannet *Morus bassanus*, hereafter ‘gannet’.

B1.1.2 For each species, the number of individuals were taken from the Seabird Count Census (Burnell *et al.*, 2023) for SPA colonies where possible. All other counts were taken from the Seabird Monitoring Programme database. Distances used in calculations were measured from the centre of the Array Area to the centre of the colony. As the centre of Forth Islands SPA was not found to be representative of the locations of breeding colonies, the Isle of May was used as the location for all species other than gannet. For gannet, distances were measured to Bass Rock.

Table B.1: Full Breeding Season Apportioning Results, Including Non-designated Sites, for Fulmar

Colony	Number of breeding adults (individuals)	Distance to the Array Area (km)	Proportion of foraging range at sea	Resulting weighting	Apportioning value
Basket Islands SPA	3,768	1,160.55	0.825	0.001	0.000
Buchan Ness to Collieston Coast SPA	1,652	55.88	0.676	0.327	0.060
Calf of Eday SPA	4,648	275.74	0.719	0.036	0.007
Cape Wrath SPA	2,954	321.17	0.754	0.016	0.003
Clare Island SPA	5,294	975.71	0.849	0.003	0.001
Cliffs of Moher SPA	9,602	1,076.06	0.821	0.004	0.001
Copinsay SPA	3,236	228.29	0.712	0.036	0.007
Deenish Island and Scariff Island SPA	802	1,204.11	0.809	0.000	0.000
Dingle Peninsula SPA	1,620	1,142.55	0.821	0.001	0.000
Duvillaun Islands SPA	1,094	944.09	0.854	0.001	0.000
East Caithness Cliffs SPA	27,928	190.53	0.712	0.452	0.083
Fair Isle SPA	64,982	285.11	0.710	0.471	0.087
Fetlar SPA	18,354	451.74	0.717	0.053	0.010
Flamborough and Filey Coast SPA	1,692	321.22	0.586	0.012	0.002
Flannan Isles SPA	6,132	485.72	0.812	0.013	0.002
Foula SPA	20,506	354.36	0.725	0.094	0.017
Fowlsheugh SPA	1,050	51.30	0.677	0.246	0.045
Handa SPA	1,446	361.40	0.757	0.006	0.001
Hermaness, Saxa Vord and Valla Field SPA	26,416	470.05	0.719	0.070	0.013

Colony	Number of breeding adults (individuals)	Distance to the Array Area (km)	Proportion of foraging range at sea	Resulting weighting	Apportioning value
High Island, Inishshark and Davillaun SPA	3,982	994.76	0.851	0.002	0.000
Horn Head to Fanad Head SPA	1,316	750.28	0.803	0.001	0.000
Hoy SPA	41,082	233.21	0.722	0.438	0.081
Iveragh Peninsula SPA	2,060	1,171.19	0.814	0.001	0.000
Kerry Head SPA	602	1,126.59	0.818	0.000	0.000
Lambay Island SPA	750	979.37	0.738	0.000	0.000
Mingulay and Berneray SPA	14,096	585.69	0.799	0.022	0.004
North Caithness Cliffs SPA	30,740	221.21	0.718	0.366	0.067
North Rona and Sula Sgeir SPA	4,420	382.88	0.786	0.016	0.003
Noss SPA	10,184	353.17	0.712	0.048	0.009
Puffin Island SPA	1,340	1,192.88	0.816	0.000	0.000
Rathlin Island SPA	2,076	741.93	0.765	0.002	0.000
Rousay SPA	4,384	266.18	0.723	0.036	0.007
Saltee Islands SPA	714	1,134.66	0.719	0.000	0.000
Shiant Isles SPA	3,012	443.67	0.779	0.008	0.002
Skelligs SPA	1,834	1,199.77	0.817	0.001	0.000
St Kilda SPA	58,372	552.99	0.827	0.097	0.018
Sumburgh Head SPA	11,900	321.31	0.711	0.068	0.012
Tory Island SPA	1,014	760.85	0.808	0.001	0.000

Colony	Number of breeding adults (individuals)	Distance to the Array Area (km)	Proportion of foraging range at sea	Resulting weighting	Apportioning value
Troup, Pennan and Lion's Heads SPA	3,788	107.04	0.687	0.201	0.037
West Donegal Coast SPA	2,836	779.58	0.817	0.002	0.000
West Westray SPA	2,428	278.84	0.726	0.018	0.003
Non-designated sites					
Aber Bach - Ynys Barry	114	1,142.53	0.674	0.000	0.000
Abereiddy - Treginns, St Davids	16	1,144.38	0.676	0.000	0.000
Ailsa Craig SPA	238	800.15	0.736	0.000	0.000
Aith to Brae	170	381.17	0.719	0.001	0.000
Aithsting	23	372.30	0.721	0.000	0.000
Alderney	330	1,000.79	0.606	0.000	0.000
Anglesey Terns / Morwenoliaid Ynys Mon SPA	406	998.05	0.692	0.000	0.000
Applecross and Crowlin Islands	82	478.51	0.761	0.000	0.000
Ardboline Island and Horse Island SPA	36	874.15	0.820	0.000	0.000
Arran	25	776.43	0.737	0.000	0.000
Arran Moors SPA	14	722.05	0.739	0.000	0.000
Ascrib Islands	162	484.62	0.779	0.000	0.000
Aughris Head SPA	164	880.90	0.822	0.000	0.000
Auskerry SPA	396	240.16	0.713	0.004	0.001

Colony	Number of breeding adults (individuals)	Distance to the Array Area (km)	Proportion of foraging range at sea	Resulting weighting	Apportioning value
Babbacombe Bay	38	1,052.03	0.629	0.000	0.000
Barafundle to Giltar Point	136	1,214.15	0.660	0.000	0.000
Barlocco	14	925.13	0.700	0.000	0.000
Bay of Berstane to Rerwick Head Tankerness	678	240.31	0.716	0.007	0.001
Bay of Meil, Head Of Holland	440	242.36	0.717	0.004	0.001
Bay of Stoer	4	390.38	0.758	0.000	0.000
Bearasay - Lewis	264	452.36	0.796	0.001	0.000
Beldog Harbour to Kid Island	726	898.19	0.844	0.000	0.000
Bennane Lea to Games Loup	12	813.78	0.732	0.000	0.000
Berry Head to Sharkham Point SSSI	10	1,053.64	0.629	0.000	0.000
Berwick to Scottish Border	530	137.02	0.662	0.018	0.003
Bigbury Bay	11	1,084.69	0.639	0.000	0.000
Bigton to Maywick	5,979	340.27	0.714	0.030	0.006
Bills Rocks SPA	188	966.90	0.854	0.000	0.000
Binevenagh	17	751.38	0.781	0.000	0.000
Birsay Cliffs - Point of Buckquoy to Loop of Cruie	886	267.34	0.726	0.007	0.001

Colony	Number of breeding adults (individuals)	Distance to the Array Area (km)	Proportion of foraging range at sea	Resulting weighting	Apportioning value
Bishop and Clerks and Ramsey	10	1,148.33	0.680	0.000	0.000
Blackhead	14	815.28	0.750	0.000	0.000
Bluemull and Colgrave Sounds SPA	6,616	454.57	0.718	0.019	0.003
Boddam to Cumlewick Ness	14	335.12	0.712	0.000	0.000
Border to Burnmouth	146	135.16	0.663	0.005	0.001
Boulby Cliffs	110	269.95	0.612	0.001	0.000
Bray	16	1,014.71	0.731	0.000	0.000
Brecqhou	6	1,030.83	0.611	0.000	0.000
Brenish to Valtos - Lewis	1,950	463.70	0.797	0.005	0.001
Bressay	4,616	349.27	0.713	0.022	0.004
Bressay - North	24	353.28	0.714	0.000	0.000
Brig O' Waithe to Hamnavoe, Stromness	30	250.07	0.723	0.000	0.000
Brighton to Newhaven Cliffs SSSI	42	806.68	0.544	0.000	0.000
Brindister	82	354.58	0.715	0.000	0.000
Brora	8	202.63	0.720	0.000	0.000
Brough of Birsay	336	268.20	0.727	0.003	0.000
Burn of Daff	154	47.05	0.678	0.043	0.008
Burray	277	229.35	0.714	0.003	0.001
Burton Cliff, Burton Bradstock	32	993.67	0.611	0.000	0.000

Colony	Number of breeding adults (individuals)	Distance to the Array Area (km)	Proportion of foraging range at sea	Resulting weighting	Apportioning value
Butt of Lewis to Gress - Lewis	2,308	274.43	0.781	0.016	0.003
Cadgwith - Helford River (East Lizard)	22	1,180.21	0.667	0.000	0.000
Caithness - Wick Bay to Freshwick Bay	1,074	200.27	0.711	0.016	0.003
Caithness and Sutherland Peatlands SPA	342	196.44	0.728	0.005	0.001
Calf of Flotta	206	233.16	0.717	0.002	0.000
Campay - Lewis	40	450.54	0.795	0.000	0.000
Canna and Sanday SPA	150	545.28	0.775	0.000	0.000
Cardigan Island and Mwnt to Carreg Lydan	156	1,125.28	0.666	0.000	0.000
Carness to Skerry of Work, St Ola	10	244.51	0.717	0.000	0.000
Carr Craig, Eyebroughy and Haystack	372	156.44	0.692	0.009	0.002
Castle Point to Portankill (Mull of Galloway) - Tysties	12	832.07	0.734	0.000	0.000
Castlemartin Coast SPA	114	1,174.91	0.665	0.000	0.000
Catterline to Inverbervie	708	55.04	0.678	0.144	0.027
Causamul, Haskeir, Boreray and Spuir	38	526.61	0.808	0.000	0.000

Colony	Number of breeding adults (individuals)	Distance to the Array Area (km)	Proportion of foraging range at sea	Resulting weighting	Apportioning value
Causeway Coast	1,760	749.65	0.766	0.002	0.000
Church Cove 2 - Cadgwith	32	1,183.64	0.669	0.000	0.000
Cnuic agus Cladach Mhuile SPA	186	621.78	0.759	0.000	0.000
Coll and Tiree SPA	2,948	582.70	0.780	0.005	0.001
Coll SPA	40	590.32	0.772	0.000	0.000
Copeland Islands SPA	116	827.87	0.745	0.000	0.000
Coquet Island SPA	106	182.92	0.643	0.002	0.000
Costa Head	1,106	264.95	0.724	0.009	0.002
Costa Head ("Inland")	4	265.93	0.725	0.000	0.000
Craigaig	2	756.41	0.754	0.000	0.000
Creadan Head to Foilakipeen	56	1,179.65	0.731	0.000	0.000
Cromwell Fort to Point of Carness	2	245.16	0.718	0.000	0.000
Crossbost to Arnish - Lewis	6	431.81	0.782	0.000	0.000
Cudden Point, Mount's Bay	12	1,198.38	0.673	0.000	0.000
Culzean Country Park - Sea cliffs	18	811.40	0.728	0.000	0.000
Cunningsburgh to Sandwich	5,734	338.13	0.713	0.029	0.005
Dale to Huxter	5,736	372.04	0.723	0.024	0.004

Colony	Number of breeding adults (individuals)	Distance to the Array Area (km)	Proportion of foraging range at sea	Resulting weighting	Apportioning value
Dawlish Warren to Teignmouth	34	1,048.14	0.628	0.000	0.000
Deepdale	66	344.25	0.714	0.000	0.000
Deerness	3,208	232.97	0.714	0.035	0.006
Donegal Bay SPA	142	872.12	0.809	0.000	0.000
Dornoch Firth and Loch Fleet SPA	48	203.93	0.723	0.001	0.000
Downhill	223	748.53	0.779	0.000	0.000
Downpatrick to Creevagh Heads	270	886.30	0.834	0.000	0.000
Droman to Geodha Ruadh na Fola	1,539	339.33	0.756	0.007	0.001
Drumshang to Heads of Ayr	8	811.25	0.727	0.000	0.000
Dulas Valley	2	1,027.82	0.663	0.000	0.000
Dungeness, Romney Marsh and Rye Bay SPA	26	726.78	0.522	0.000	0.000
Dunglass to Fast Castle	132	130.74	0.671	0.005	0.001
Dunrobin	2	206.32	0.722	0.000	0.000
Dyserth Quarry	6	1,034.59	0.657	0.000	0.000
East Antrim Coast	82	781.14	0.756	0.000	0.000
East Island	816	915.89	0.707	0.001	0.000
East Loch Nedd to Rubha Creag Lomhair	10	382.67	0.755	0.000	0.000

Colony	Number of breeding adults (individuals)	Distance to the Array Area (km)	Proportion of foraging range at sea	Resulting weighting	Apportioning value
East Mainland Coast, Shetland SPA	4,204	227.95	0.715	0.047	0.009
East Sanday Coast SPA	684	264.33	0.717	0.006	0.001
East Trotternish	258	479.50	0.769	0.001	0.000
Eday	1,835	256.10	0.719	0.016	0.003
Edinburgh	16	163.32	0.692	0.000	0.000
Effirth to Ness of Bixter	18	369.24	0.719	0.000	0.000
Egilsay	284	258.65	0.720	0.002	0.000
Erris Head	924	910.12	0.850	0.001	0.000
Eye Peninsula - Lewis	962	419.48	0.778	0.003	0.001
Eyemouth to Burnmouth	84	131.19	0.664	0.003	0.001
Falmouth Bay to St Austell Bay SPA	176	1,138.76	0.660	0.000	0.000
Fara	158	234.82	0.719	0.002	0.000
Faraid Head/ Balnakeil	344	318.71	0.748	0.002	0.000
Faray, Holm of Faray and Rusk Holm	566	263.55	0.721	0.005	0.001
Farne Islands SPA	372	150.62	0.650	0.011	0.002
Fethaland to North Roe	1,610	409.39	0.722	0.006	0.001
Fife Ness to St Andrews	22	112.51	0.685	0.001	0.000

Colony	Number of breeding adults (individuals)	Distance to the Array Area (km)	Proportion of foraging range at sea	Resulting weighting	Apportioning value
Findon Ness - Hare Ness	212	45.97	0.677	0.062	0.011
Finstown and Kirkwall	65	243.27	0.719	0.001	0.000
Firth of Forth SPA	10	115.07	0.694	0.000	0.000
Fitful	4	324.72	0.713	0.000	0.000
Floday - Lewis	22	452.71	0.796	0.000	0.000
Flotta and Calf of Flotta	2,426	231.73	0.717	0.026	0.005
Forth Islands SPA	1,362	130.84	0.679	0.049	0.009
Freshwater West to West Angle Bay	4	1,192.69	0.668	0.000	0.000
Friar Island	90	1,005.31	0.850	0.000	0.000
Friog	26	1,074.56	0.662	0.000	0.000
Gairsay, Hen of Gairsay, Boray Holm, Sweyn Holm	546	253.28	0.720	0.005	0.001
Garvan Islands	10	726.16	0.790	0.000	0.000
Giant's Causeway Coast	1,176	745.84	0.773	0.001	0.000
Gilfach yr halen	20	1,119.70	0.659	0.000	0.000
Girdle Ness to Hare Ness	176	45.52	0.677	0.052	0.010
Glannau Aberdaron ac Ynys Enlli/ Aberdaron Coast and Bardsey Island SPA	28	1,044.35	0.685	0.000	0.000

Colony	Number of breeding adults (individuals)	Distance to the Array Area (km)	Proportion of foraging range at sea	Resulting weighting	Apportioning value
Glen App and Galloway Moors SPA	16	819.90	0.731	0.000	0.000
Glimps Holm	34	230.33	0.715	0.000	0.000
Gloup Ness to Gutcher (N.W. Yell)	706	423.38	0.720	0.002	0.000
Graemsay	110	247.28	0.722	0.001	0.000
Grass Holm	34	250.67	0.719	0.000	0.000
Great Mew Stone (Island)	44	1,098.84	0.643	0.000	0.000
Greater Wash SPA	216	436.73	0.544	0.001	0.000
Green Holms	322	254.76	0.718	0.003	0.001
Gremista	8	361.46	0.715	0.000	0.000
Grobsness	12	380.15	0.719	0.000	0.000
Gruinart Flats, Islay SPA	56	677.38	0.768	0.000	0.000
Gruting	2	366.77	0.719	0.000	0.000
Guernsey	11	1,044.46	0.616	0.000	0.000
Gulberwick to Fladdabister	842	354.19	0.714	0.004	0.001
Gunwallor Fishing Cove to Kynance Cove	78	1,188.81	0.671	0.000	0.000
Gweedore Bay Islands	52	794.40	0.813	0.000	0.000
Hagmark Hill	42	359.31	0.718	0.000	0.000
Hall Bay to Craigeven Bay	14	50.05	0.678	0.003	0.001
Hallilee	42	336.52	0.713	0.000	0.000

Colony	Number of breeding adults (individuals)	Distance to the Array Area (km)	Proportion of foraging range at sea	Resulting weighting	Apportioning value
Helliar Holm	312	246.11	0.718	0.003	0.001
Herm	12	1,031.10	0.612	0.000	0.000
Heylor to Stenness	1,788	396.56	0.724	0.007	0.001
Hill of Scarvister	21	360.39	0.721	0.000	0.000
Hillswick	1,082	392.55	0.723	0.004	0.001
Holm	2,250	229.32	0.714	0.025	0.005
Holm of Huip and Little Linga Holm	300	255.71	0.717	0.003	0.000
Holm of Melby, Forewick Holm, Crog Holm, Holm of Culsetter, Isle of Gunniste	26	375.51	0.722	0.000	0.000
Holm, Deerness and Tankerness	94	229.29	0.715	0.001	0.000
Holms of Spurness	94	257.47	0.717	0.001	0.000
Hopeman Bay	54	168.34	0.708	0.001	0.000
Horse Island, Colsay, Little and Ladies Holm to Fitful Head	1,499	321.70	0.712	0.009	0.002
Housel to Church Cove 1	4	1,185.45	0.669	0.000	0.000
Howick - Cullornose Point - Dunstanburgh Castle Point	184	168.21	0.647	0.004	0.001
Howth Head Coast SPA	28	992.15	0.735	0.000	0.000

Colony	Number of breeding adults (individuals)	Distance to the Array Area (km)	Proportion of foraging range at sea	Resulting weighting	Apportioning value
Hoy and Southwalls	1,970	230.83	0.719	0.022	0.004
Huesbreck	20	331.21	0.712	0.000	0.000
Hunda	4	230.79	0.716	0.000	0.000
Huxter to Brindister	4,250	374.59	0.722	0.018	0.003
Illanmaster SPA	220	902.33	0.843	0.000	0.000
Illeunonearaun SPA	114	1,106.87	0.820	0.000	0.000
Inchgarvie and Forth Rail Bridge	300	165.92	0.697	0.007	0.001
Inchmarnock Island, Bute	22	772.21	0.739	0.000	0.000
Inishbofin, Inishdooy and Inishbeg SPA	178	766.53	0.807	0.000	0.000
Inishduff SPA	16	838.60	0.816	0.000	0.000
Inishglora and Inishkeeragh SPA	26	936.10	0.853	0.000	0.000
Inishkea Islands SPA	162	942.70	0.855	0.000	0.000
Inishmore SPA	250	1,050.51	0.831	0.000	0.000
Inishmurray SPA	514	865.25	0.819	0.000	0.000
Inishtrahull SPA	194	727.27	0.789	0.000	0.000
Inishturk Island	5,422	988.92	0.850	0.003	0.001
Inland Gwynedd	6	1,019.63	0.659	0.000	0.000
Inner Moray Firth SPA	4	213.40	0.725	0.000	0.000
Inverbervie to St Cyrus	38	58.60	0.680	0.007	0.001
Ireland to Maywick	2,042	342.35	0.714	0.010	0.002

Colony	Number of breeding adults (individuals)	Distance to the Array Area (km)	Proportion of foraging range at sea	Resulting weighting	Apportioning value
Ireland's Eye SPA	130	990.06	0.737	0.000	0.000
Islay - East (Port Askaig to Bowmore)	8	721.46	0.761	0.000	0.000
Isle of Eigg (Summer Isles)	72	543.41	0.765	0.000	0.000
Isle of Wight	6	888.72	0.574	0.000	0.000
Jersey	234	1,030.48	0.611	0.000	0.000
Jethou	12	1,033.09	0.612	0.000	0.000
Jura, Scarba and the Garvellachs SPA	14	651.35	0.757	0.000	0.000
Keil Point to Kilmanshennachan	48	770.42	0.750	0.000	0.000
Laggan, Islay SPA	18	694.25	0.767	0.000	0.000
Largybaan	4	758.04	0.754	0.000	0.000
Larne Lough to Portmuck	404	806.75	0.751	0.000	0.000
Leckpatrick, S. of Torr Head	26	762.98	0.761	0.000	0.000
Lenan Head to Tullagh Point	200	743.07	0.795	0.000	0.000
Lerwick to Gulberwick	182	351.31	0.714	0.001	0.000
Lewis and Harris - Tysties	30	487.06	0.801	0.000	0.000
Lewis Peatlands SPA	598	405.39	0.786	0.002	0.000
Lindisfarne SPA	328	148.61	0.656	0.009	0.002
Linga Holm	480	252.66	0.716	0.004	0.001

Colony	Number of breeding adults (individuals)	Distance to the Array Area (km)	Proportion of foraging range at sea	Resulting weighting	Apportioning value
Little Cumbrae	22	785.84	0.734	0.000	0.000
Little Haven to Newgale	180	1,158.42	0.670	0.000	0.000
Little Skerry	98	211.21	0.711	0.001	0.000
Liverpool Bay / Bae Lerpwl (Wales) SPA	88	991.92	0.668	0.000	0.000
Llanddulas Quarries	50	1,025.99	0.664	0.000	0.000
Llangrannog to Penpeles (includes Tresaith SSSI and Aberporth)	48	1,125.43	0.663	0.000	0.000
Llanrhyslud - Llansanffraed	28	1,110.33	0.656	0.000	0.000
Llansantffraid - Aberaeron	30	1,116.76	0.657	0.000	0.000
Lleyn Peninsula	14	1,042.31	0.680	0.000	0.000
Loch Laxford	42	360.34	0.754	0.000	0.000
Loch of Banks and The Loons	12	263.47	0.726	0.000	0.000
Loch of Vaara (Twatt)	83	375.44	0.719	0.000	0.000
Loch Ryan	4	818.39	0.727	0.000	0.000
Loch Torridon	8	463.73	0.759	0.000	0.000
Lochs of Spiggie and Brow SPA	1,280	383.12	0.713	0.005	0.001
Loop Head Peninsular	394	1,111.45	0.821	0.000	0.000
Loop Head SPA	90	1,112.66	0.823	0.000	0.000

Colony	Number of breeding adults (individuals)	Distance to the Array Area (km)	Proportion of foraging range at sea	Resulting weighting	Apportioning value
Loughshinny to Killiney	108	991.43	0.736	0.000	0.000
Lunan Bay to Arbroath	473	81.90	0.682	0.043	0.008
Lunning/Levaneap	1,122	383.20	0.717	0.004	0.001
Lythe Mead to Carrick-Kee	12	864.26	0.726	0.000	0.000
Maggy's Leap	4	907.47	0.750	0.000	0.000
Magharee Islands SPA	112	1,138.70	0.819	0.000	0.000
Mainland central: Terns	1	373.67	0.718	0.000	0.000
Mainland north: Terns	24	387.95	0.722	0.000	0.000
Marwick Head SPA	1,260	264.96	0.727	0.010	0.002
Maywick to Scalloway	6,598	344.24	0.715	0.033	0.006
Maywick to St. Ninians Isle	97	340.09	0.714	0.000	0.000
Meall Mor and Isle Martin	2	417.82	0.751	0.000	0.000
Meikle Ross and Little Ross	2	914.02	0.705	0.000	0.000
Melvich to Duncansby Stacks SSSI	100	237.99	0.719	0.001	0.000
Mid Walls	22	361.60	0.721	0.000	0.000
Mid-Waterford Coast SPA	460	1,193.08	0.741	0.000	0.000
Monach Islands SPA	78	543.52	0.805	0.000	0.000

Colony	Number of breeding adults (individuals)	Distance to the Array Area (km)	Proportion of foraging range at sea	Resulting weighting	Apportioning value
Monreith Cliffs and Scar Rocks	8	880.10	0.718	0.000	0.000
Montrose to Lunan Bay	132	74.99	0.681	0.014	0.003
Mount's Bay, Cornwall	68	1,194.16	0.672	0.000	0.000
Mousa SPA	316	336.86	0.712	0.002	0.000
Mousland	15	256.07	0.725	0.000	0.000
Muck	1,434	551.39	0.767	0.003	0.000
Muck Island	144	806.34	0.752	0.000	0.000
Muckle Roe	4,285	382.96	0.720	0.017	0.003
Muckle Roe Bridge to Mangaster	90	384.56	0.720	0.000	0.000
Muckle Roe to Ura Firth	1,224	389.49	0.721	0.005	0.001
Mull	876	581.80	0.758	0.001	0.000
Mynydd Cilan, Trwyn y Wylfa ac Ynysoedd Sant Tudwal SPA	178	1,052.30	0.678	0.000	0.000
Natural Arches -	4	130.61	0.672	0.000	0.000
Ness and Barvas, Lewis SPA	934	406.96	0.785	0.003	0.001
Nesting / Laxo to Housabister	74	378.99	0.716	0.000	0.000
New Quay to Lochтын	74	1,121.39	0.661	0.000	0.000
Newport to Poppit	310	1,129.61	0.667	0.000	0.000
Newton Hill	128	49.09	0.678	0.033	0.006

Colony	Number of breeding adults (individuals)	Distance to the Array Area (km)	Proportion of foraging range at sea	Resulting weighting	Apportioning value
Newtonhill - Hall Bay	228	48.36	0.678	0.060	0.011
No Ness to Levenwick and Boddam to Virkie	10,026	334.36	0.712	0.053	0.010
North Antrim coast	15	746.75	0.776	0.000	0.000
North Colonsay and Western Cliffs SPA	1,078	653.30	0.764	0.001	0.000
North East of Kilkee	502	1,102.25	0.820	0.000	0.000
North Island	324	908.28	0.708	0.000	0.000
North Mainland 10 - Mangaster to Pinchdyke	54	386.09	0.720	0.000	0.000
North Mainland 11 - Vidlin Voe to Lunning Sound	80	381.30	0.716	0.000	0.000
North Mainland 13 - Hamna Voe to Sand Voe	1,234	394.37	0.724	0.005	0.001
North Mainland 18 - Ladie Hill to Clubb of Mulla	10	381.36	0.719	0.000	0.000
North Mainland 19 - Ness of Hillswick	634	392.34	0.723	0.002	0.000
North Mainland 21 - Hamar Voe to Mangaster Voe	350	387.94	0.722	0.001	0.000
North Mainland 22 - Black Hill to Boat Geo South	1,160	382.94	0.721	0.005	0.001

Colony	Number of breeding adults (individuals)	Distance to the Array Area (km)	Proportion of foraging range at sea	Resulting weighting	Apportioning value
North Mainland 24 - Paidland Vird to Stourl	298	404.24	0.722	0.001	0.000
North Mainland 25 - Voe to Logie Hill	2	380.44	0.718	0.000	0.000
North Mainland 3 - Mossbank to Fora Ness	36	391.22	0.719	0.000	0.000
North Mainland 6 - Fethaland to Burravoe	200	409.53	0.722	0.001	0.000
North Mainland 7 - Ay Wick to Firth	32	393.58	0.719	0.000	0.000
North Roe to Gluss Ayre	1,226	398.72	0.721	0.004	0.001
North Ronaldsay	1,514	273.70	0.718	0.012	0.002
North Sutherland Coastal Islands SPA	630	295.66	0.740	0.004	0.001
North Sutherland Islands	770	295.60	0.738	0.005	0.001
North Sutor to Shandwick	296	199.39	0.720	0.004	0.001
North Uist	348	505.33	0.795	0.001	0.000
North Uist Machair and Islands SPA	2	495.12	0.799	0.000	0.000
North York Moors SPA	4	288.21	0.611	0.000	0.000
Northumbria Coast SPA	820	184.34	0.643	0.016	0.003
Noss Mayo to Erme Estuary	8	1,090.80	0.640	0.000	0.000

Colony	Number of breeding adults (individuals)	Distance to the Array Area (km)	Proportion of foraging range at sea	Resulting weighting	Apportioning value
Old Hill - Lewis	108	452.77	0.796	0.000	0.000
Orkney Mainland Moors SPA	6	244.99	0.722	0.000	0.000
Oronsay and South Colonsay SPA	64	660.99	0.765	0.000	0.000
Otterswick and Graveland SPA	5,284	446.18	0.720	0.015	0.003
Out Skerries	1,108	384.11	0.714	0.004	0.001
Pabay Mor	36	455.45	0.796	0.000	0.000
Papa Little, Linga and Vementry Islets	370	376.94	0.720	0.002	0.000
Papa Stour SPA	3,112	411.39	0.724	0.011	0.002
Papa Stronsay	126	253.27	0.715	0.001	0.000
Papa Westray	459	278.46	0.724	0.003	0.001
Papa Westray (North Hill and Holm) SPA	602	289.25	0.724	0.004	0.001
Peerie Voe of Spiggie to St. Ninian's	680	337.12	0.713	0.004	0.001
Pentland Firth Islands SPA	954	220.95	0.714	0.011	0.002
Pinbain Quarry - Kennedy's Pass	2	814.02	0.731	0.000	0.000
Plymouth - Falmouth	78	1,116.96	0.650	0.000	0.000
Plymouth to Berry Head Coastline	4	1,085.95	0.640	0.000	0.000
Point of Hisber to Woodwick House	56	258.80	0.722	0.000	0.000

Colony	Number of breeding adults (individuals)	Distance to the Array Area (km)	Proportion of foraging range at sea	Resulting weighting	Apportioning value
Port a' Ghleannain to Bay of Culkein	10	386.03	0.757	0.000	0.000
Port Mona, Devil's Bridge, Laggantalluch Head	30	858.16	0.729	0.000	0.000
Portally to Benlea Head	46	1,184.49	0.732	0.000	0.000
Portknockie	6	134.91	0.697	0.000	0.000
Portland	40	977.88	0.607	0.000	0.000
Portpatrick	176	830.41	0.735	0.000	0.000
Portsoy to Cullen	244	129.32	0.695	0.009	0.002
Priest Island (Summer Isles) SPA	6	414.70	0.759	0.000	0.000
Ramna Stacks and Gruney SPA	142	454.36	0.722	0.000	0.000
Ramsey and St David's Peninsula Coast SPA	672	1,146.21	0.676	0.000	0.000
Rathlin O'Birne Island SPA	10	837.62	0.822	0.000	0.000
Ravenscar to Robin Hood's Bay	72	288.87	0.600	0.001	0.000
Reawick	1,884	355.69	0.718	0.009	0.002
Rerwick Head to Mirkady Point	496	236.89	0.714	0.005	0.001
Rinns of Islay SPA	326	679.87	0.770	0.000	0.000
Ronas Hill - North Roe and Tingon SPA	1,138	435.53	0.723	0.003	0.001

Colony	Number of breeding adults (individuals)	Distance to the Array Area (km)	Proportion of foraging range at sea	Resulting weighting	Apportioning value
Ronas Hill to Uyea	1,544	409.62	0.723	0.005	0.001
Ronas Voe to the Ness	276	408.42	0.723	0.001	0.000
Rosehearty to Bay of Cullen	474	107.63	0.687	0.025	0.005
Rousay - Central	4	263.92	0.722	0.000	0.000
Rousay - South and Central	174	261.81	0.722	0.001	0.000
Rousay - South East	62	260.17	0.722	0.001	0.000
Rousay Coast	238	259.10	0.721	0.002	0.000
Rubha Coigeach	188	403.11	0.757	0.001	0.000
Rubha Hunish	1,728	467.81	0.775	0.004	0.001
Rubha Reidh Peninsula	44	437.69	0.763	0.000	0.000
Rum SPA	24	545.90	0.770	0.000	0.000
Rysa Little and Cava	388	238.79	0.720	0.004	0.001
Saltburn Coast	160	267.82	0.614	0.002	0.000
Saltness to Skeld	416	358.77	0.718	0.002	0.000
Sanda Islands - Kintyre	86	774.63	0.749	0.000	0.000
Sanday	2,930	261.41	0.718	0.025	0.005
Sanday - Cata Sand	12	264.27	0.717	0.000	0.000
Sanday - North and Holms of Ire	50	270.02	0.719	0.000	0.000
Sanday - Spurness	12	260.65	0.718	0.000	0.000

Colony	Number of breeding adults (individuals)	Distance to the Array Area (km)	Proportion of foraging range at sea	Resulting weighting	Apportioning value
Sanday - Stove to Kettletoft	989	261.53	0.718	0.008	0.002
Sanday - Tofts Ness	32	266.60	0.716	0.000	0.000
Sandness	247	372.97	0.722	0.001	0.000
Sandvoe to Fethaland	1,302	410.49	0.722	0.004	0.001
Sandvoe to Uyea	1,802	408.98	0.723	0.006	0.001
Sark	76	1,029.46	0.611	0.000	0.000
Scalby to Rocky Point	42	298.98	0.597	0.000	0.000
Scalloway Islands	424	354.22	0.717	0.002	0.000
Scalloway Islands North	26	362.35	0.717	0.000	0.000
Scalloway Islands South	122	350.80	0.716	0.001	0.000
Scalloway to Semblister	210	364.29	0.717	0.001	0.000
Scapa Bay to St. Marys	1,658	237.26	0.716	0.017	0.003
Scarborough to Osgodby Point	18	304.91	0.594	0.000	0.000
Seaford to Beachy Head SSSI	10	797.69	0.540	0.000	0.000
Seahouses	4	155.93	0.650	0.000	0.000
Shakespeare/Abbots Cliff	14	702.54	0.511	0.000	0.000
Shandwick to Portmahomack	18	194.32	0.718	0.000	0.000

Colony	Number of breeding adults (individuals)	Distance to the Array Area (km)	Proportion of foraging range at sea	Resulting weighting	Apportioning value
Shapinsay	20	244.89	0.717	0.000	0.000
Shapinsay (Coastal)	1,584	247.36	0.717	0.015	0.003
Sharkham Point to Start Point (South Hams)	80	1,063.35	0.633	0.000	0.000
Sheddock Cliffs - Burrow Head	20	894.91	0.712	0.000	0.000
Sheep Island SPA	122	749.37	0.768	0.000	0.000
Sidmouth to Beer	4	1,024.10	0.621	0.000	0.000
Skeld, Westerwick and Culswick	7,468	355.59	0.719	0.034	0.006
Skerries Islands SPA	62	972.11	0.742	0.000	0.000
Skerry Islands	86	848.21	0.772	0.000	0.000
Skomer, Skokholm and the Seas off Pembrokeshire SPA	1,606	1,161.54	0.676	0.001	0.000
Skye	604	499.50	0.775	0.001	0.000
Skye - Strathaird	8	517.46	0.765	0.000	0.000
Skye: Hoe Point to Meanish	468	507.76	0.783	0.001	0.000
Sleibhtean agus Cladach Thiriodh (Tiree Wetlands and Coast) SPA	104	602.25	0.780	0.000	0.000
Sligo Bay	234	863.61	0.816	0.000	0.000
Smoo to Melvich	2,732	294.35	0.736	0.018	0.003

Colony	Number of breeding adults (individuals)	Distance to the Array Area (km)	Proportion of foraging range at sea	Resulting weighting	Apportioning value
Solent and Dorset Coast SPA	54	847.01	0.579	0.000	0.000
Solway Firth SPA	44	865.09	0.694	0.000	0.000
Sound of Gigha SPA	38	689.60	0.753	0.000	0.000
Sound of Pabbay	150	583.38	0.796	0.000	0.000
Sound of Papa	14	375.67	0.723	0.000	0.000
South Aberdeenshire - Tysties	10	46.40	0.678	0.003	0.001
South Dorset Coast SSSI	20	964.23	0.602	0.000	0.000
South East Sutherland / Alness Bay Ross-shire	38	212.95	0.722	0.000	0.000
South Island	1,272	910.38	0.713	0.001	0.000
South Ronaldsay	14,706	224.77	0.714	0.171	0.031
South Ronaldsay (South East)	260	221.30	0.713	0.003	0.001
South Sutor	110	201.01	0.720	0.002	0.000
South Uist	46	549.78	0.793	0.000	0.000
South West Iona and Soa	22	611.26	0.770	0.000	0.000
South West Islands	354	984.98	0.848	0.000	0.000
St Abb's Head to Fast Castle SPA	384	127.88	0.668	0.015	0.003
St Abbs to Eyemouth	88	129.28	0.666	0.003	0.001

Colony	Number of breeding adults (individuals)	Distance to the Array Area (km)	Proportion of foraging range at sea	Resulting weighting	Apportioning value
St Anne's Head (Renny Slip to Dale)	16	1,188.61	0.670	0.000	0.000
St Bees Head and Town	86	946.58	0.688	0.000	0.000
St Bride's Bay (S and SE)	26	1,162.83	0.671	0.000	0.000
St Cyrus NNR	82	69.06	0.681	0.011	0.002
St Margaret's	14	695.29	0.509	0.000	0.000
St. Ninian's Isle	7,862	338.24	0.714	0.040	0.007
Stac Mhic Mhurchaidh, Reidh Eilean, Eilean Annraidh, Eilean Chalba	10	606.67	0.770	0.000	0.000
Staffa	40	595.58	0.768	0.000	0.000
Staffin	4	470.70	0.771	0.000	0.000
Stags of Broad Haven SPA	448	908.35	0.846	0.000	0.000
Staithe to Sandsend	414	274.60	0.608	0.004	0.001
Starling Knowe to Downan Point	2	820.55	0.734	0.000	0.000
Stenness to Hillswick	1,832	394.51	0.724	0.007	0.001
Stoer Headland	698	385.31	0.759	0.003	0.000
Stonehaven to Wine Cove	126	51.00	0.678	0.030	0.006

Colony	Number of breeding adults (individuals)	Distance to the Array Area (km)	Proportion of foraging range at sea	Resulting weighting	Apportioning value
Straight Point and Otterton Ledge to Big Picket Rock	10	1,034.73	0.624	0.000	0.000
Strangford Lough SPA	4	834.57	0.746	0.000	0.000
Strathlene to Portknockie	114	137.21	0.698	0.004	0.001
Stromness	10	249.46	0.724	0.000	0.000
Stromness Area, Hundland	1,006	259.88	0.724	0.009	0.002
Stromness to Binnness	36	363.39	0.717	0.000	0.000
Stronsay	5,412	245.62	0.715	0.053	0.010
Strumble Head - Pwll Deri	142	1,137.48	0.674	0.000	0.000
Strumble Head to Fishguard to Newport	122	1,135.48	0.671	0.000	0.000
Sule Skerry and Sule Stack SPA	238	305.64	0.749	0.001	0.000
Sullom Voe	328	389.35	0.720	0.001	0.000
Sumburgh to Peerie Voe of Spiggie	23,992	323.67	0.713	0.134	0.025
Summer Isles	114	411.83	0.756	0.000	0.000
Swanbister - Scapa Bay, West Mainland	1,246	241.28	0.718	0.012	0.002
Switha SPA	904	229.25	0.717	0.010	0.002
Tarbet, Badcail Bay and Edrachillis Bay	22	377.38	0.754	0.000	0.000

Colony	Number of breeding adults (individuals)	Distance to the Array Area (km)	Proportion of foraging range at sea	Resulting weighting	Apportioning value
The Bastard - Kintyre	2	772.26	0.748	0.000	0.000
The Oa SPA	170	704.99	0.767	0.000	0.000
The Taing - The Nev	3,160	433.74	0.718	0.010	0.002
The Wash SPA	214	461.41	0.549	0.001	0.000
Tingwall	28	360.17	0.716	0.000	0.000
Tingwall to Hatston	572	250.47	0.720	0.005	0.001
Tiree	32	601.98	0.779	0.000	0.000
Tolsta Chaolais to Bragair - Lewis	1,078	442.27	0.792	0.003	0.001
Tory Island and Bloody Foreland	6	779.50	0.810	0.000	0.000
Treshnish Isles SPA	688	609.46	0.770	0.001	0.000
Tresta Voe - Weisdale Voe	106	365.58	0.717	0.000	0.000
Tronda, East Burra and Houss Ness	102	354.30	0.715	0.000	0.000
Trondra	96	352.24	0.716	0.000	0.000
Trondra (East Side), East Burra and Houss Ness	1,100	350.60	0.715	0.005	0.001
Ulsta to Whalefirth (Yell)	50	409.51	0.721	0.000	0.000
Unst - Balta and Huney	64	425.83	0.717	0.000	0.000
Unst - south west	1,784	425.48	0.719	0.006	0.001
Vaila	2,938	359.87	0.720	0.013	0.002

Colony	Number of breeding adults (individuals)	Distance to the Array Area (km)	Proportion of foraging range at sea	Resulting weighting	Apportioning value
Vementry Region	864	376.86	0.720	0.004	0.001
Walls - Dale	2	360.95	0.720	0.000	0.000
Walls to Dales	1,087	360.00	0.721	0.005	0.001
Weisdale Voe to Skeld	220	355.93	0.718	0.001	0.000
West Bay - Bridport	42	994.89	0.611	0.000	0.000
West Burra - Shetland	1,153	349.79	0.715	0.006	0.001
West Burrafirth to Longa Ness	20	374.29	0.720	0.000	0.000
West Coast of the Outer Hebrides SPA	875	467.77	0.799	0.002	0.000
West Coast Wigtownshire	10	833.33	0.733	0.000	0.000
West Donegal Islands SPA	34	779.06	0.811	0.000	0.000
West Island	166	900.70	0.714	0.000	0.000
West Mainland	39	258.70	0.724	0.000	0.000
West Mainland (Coastal Sites)	20	263.26	0.723	0.000	0.000
West Mainland (Houton - Stenness Hills)	206	241.95	0.720	0.002	0.000
West Mainland (Inland) - HY31	46	249.23	0.722	0.000	0.000
West Penwith	316	1,231.34	0.679	0.000	0.000
Westray	4,034	271.99	0.723	0.032	0.006
Westray - Aikerness	44	280.53	0.725	0.000	0.000

Colony	Number of breeding adults (individuals)	Distance to the Array Area (km)	Proportion of foraging range at sea	Resulting weighting	Apportioning value
Westray - North West	10	280.41	0.725	0.000	0.000
Westray - Rapness	48	266.72	0.722	0.000	0.000
Westray - Swartmill to Rapness	172	268.51	0.722	0.001	0.000
Whalefirth to Aastack	362	421.10	0.721	0.001	0.000
Whalsay: Western Islands	46	382.93	0.716	0.000	0.000
Whitby to Robin Hood's Bay	124	280.46	0.602	0.001	0.000
Whitehead	8	816.72	0.751	0.000	0.000
Wicklow Head SPA	46	1,035.34	0.724	0.000	0.000
Woodwick House to Tingwall Pier	61	256.64	0.721	0.001	0.000
Wyre	10	256.78	0.721	0.000	0.000
Yell - East Coast	60	397.53	0.718	0.000	0.000
Yell - Whale Firth to Gloup	2,424	420.50	0.721	0.008	0.001
Yell and Yell Sound Islands: Terns	32	400.33	0.719	0.000	0.000
Yell Sound Islands	910	399.80	0.720	0.003	0.001
Yesnaby - Ness Point, Stromness	1,566	252.73	0.724	0.014	0.003
Yesnaby to Marwick (West Mainland)	1,464	260.08	0.725	0.012	0.002
Ynys Seiriol / Puffin Island SPA	100	1,009.81	0.675	0.000	0.000

Colony	Number of breeding adults (individuals)	Distance to the Array Area (km)	Proportion of foraging range at sea	Resulting weighting	Apportioning value
Ythan Estuary, Sands of Forvie and Meikle Loch SPA	112	52.18	0.677	0.025	0.005

Table B.2: Full Breeding Season Apportioning Results, Including Non-designated Sites, for Gannet

Colony	Number of breeding adults (individuals)	Distance to the Array Area (km)	Proportion of foraging range at sea	Resulting weighting	Apportioning value
Fair Isle SPA	9,942	285.11	0.855	0.029	0.009
Flamborough and Filey Coast SPA	26,784	321.22	0.605	0.087	0.027
Forth Islands SPA	150,518	127.89	0.733	2.559	0.798
Hermaness, Saxa Vord and Valla Field SPA	59,124	470.05	0.865	0.063	0.020
North Rona and Sula Sgeir SPA	24,542	382.88	0.883	0.039	0.012
Noss SPA	27,530	353.17	0.851	0.053	0.016
St Kilda SPA	120,580	552.99	0.858	0.094	0.029
Sule Skerry and Sule Stack SPA	18,130	305.64	0.880	0.045	0.014
Non-designated sites					
Flannan Isles SPA	10,560	485.72	0.851	0.011	0.003
Foula SPA	4,886	354.36	0.880	0.009	0.003
Marwick Head SPA	18	264.96	0.882	0.000	0.000
St Abb's Head to Fast Castle SPA	22	127.88	0.695	0.000	0.000
Troup, Pennan and Lion's Heads SPA	9,650	107.04	0.820	0.209	0.065
West Westray SPA	2,768	278.84	0.885	0.008	0.003

Table B.3: Full Breeding Season Apportioning Results, Including Non-designated Sites, for Kittiwake

Colony	Number of breeding adults (individuals)	Distance to the Array Area (km)	Proportion of foraging range at sea	Resulting weighting	Apportioning value
Buchan Ness to Collieston Coast SPA	22,590	55.88	0.721	0.933	0.213
Calf of Eday SPA	672	275.74	0.859	0.001	0.000
Copinsay SPA	1,910	228.29	0.833	0.004	0.001
East Caithness Cliffs SPA	48,958	190.53	0.773	0.162	0.037
Farne Islands SPA	8,804	150.62	0.612	0.059	0.013
Fair Isle SPA	896	285.11	0.912	0.001	0.000
Flamborough and Filey Coast SPA	91,008	321.22	0.589	0.139	0.032
Forth Islands SPA	9,084	115.07	0.609	0.105	0.024
Fowlsheugh SPA	28,078	51.30	0.673	1.474	0.337
Hoy SPA	532	233.21	0.820	0.001	0.000
Marwick Head SPA	1,812	264.96	0.839	0.003	0.001
North Caithness Cliffs SPA11,142221.210.8050.0260.006Rousay SPA	660	266.18	0.849	0.001	0.000
St Abb's Head to Fast Castle SPA	10,300	127.88	0.601	0.097	0.022
Troup, Pennan and Lion's Heads SPA	21,232	107.04	0.735	0.234	0.054
West Westray SPA	5,510	278.84	0.859	0.008	0.002
Non-designated sites					
Berwick to Scottish Border	3,054	137.02	0.603	0.025	0.006
Boulby Cliffs	2,880	269.95	0.578	0.006	0.001
Brough of Birsay	2	268.20	0.841	0.000	0.000
Burn of Daff	2,186	47.05	0.683	0.134	0.031

Colony	Number of breeding adults (individuals)	Distance to the Array Area (km)	Proportion of foraging range at sea	Resulting weighting	Apportioning value
Caithness - Wick Bay to Freshwick Bay	90	200.27	0.797	0.000	0.000
Caithness and Sutherland Peatlands SPA	100	196.44	0.781	0.000	0.000
Carr Craig, Eyebroughy and Haystack	804	156.44	0.584	0.005	0.001
Catterline to Inverbervie	4,093	55.04	0.671	0.187	0.043
Coquet Island SPA	932	182.92	0.595	0.004	0.001
Costa Head	46	264.95	0.845	0.000	0.000
Eyemouth to Burnmouth	1,418	131.19	0.603	0.013	0.003
Findon Ness - Hare Ness	2,354	45.97	0.686	0.151	0.035
Firth of Forth SPA	2,310	157.43	0.579	0.015	0.003
Fraserburgh	162	90.15	0.740	0.003	0.001
Girdle Ness to Hare Ness	4,186	45.52	0.689	0.272	0.062
Green Holms	64	254.76	0.847	0.000	0.000
Hall Bay to Craigeven Bay	158	50.05	0.678	0.009	0.002
Holm	22	229.32	0.831	0.000	0.000
Hopeman Bay	1,398	168.34	0.728	0.006	0.001
Howick - Cullornose Point - Dunstanburgh Castle Point	2,672	168.21	0.602	0.015	0.003
Hoy and Southwalls	66	230.83	0.821	0.000	0.000
Lunan Bay to Arbroath	2,362	81.90	0.648	0.051	0.012
Montrose to Lunan Bay	740	74.99	0.654	0.019	0.004
Newton Hill	4	49.09	0.679	0.000	0.000
Newtonhill - Hall Bay	596	48.36	0.681	0.035	0.008

Colony	Number of breeding adults (individuals)	Distance to the Array Area (km)	Proportion of foraging range at sea	Resulting weighting	Apportioning value
North Sutherland Coastal Islands SPA	141	295.66	0.797	0.000	0.000
North Sutor to Shandwick	904	199.39	0.730	0.003	0.001
Northumbria Coast SPA	5,268	184.34	0.593	0.024	0.006
Papa Westray (North Hill and Holm) SPA	30	289.25	0.868	0.000	0.000
Pentland Firth Islands SPA	262	220.95	0.815	0.001	0.000
Peterhead	66	64.17	0.731	0.002	0.000
Portknockie	62	134.91	0.727	0.000	0.000
Portsoy to Cullen	1,032	129.32	0.729	0.008	0.002
Rerwick Head to Mirkady Point	6	236.89	0.836	0.000	0.000
River Tyne to Seaton Sluice	2,022	213.56	0.569	0.007	0.002
Rosehearty to Bay of Cullen	56	107.63	0.740	0.001	0.000
Rousay - South East	254	260.17	0.847	0.000	0.000
Saltburn Coast	2,220	267.82	0.574	0.005	0.001
Sanday - Stove to Kettletoft	102	261.53	0.857	0.000	0.000
Scalby to Rocky Point	90	298.98	0.582	0.000	0.000
Scapa Bay to St. Marys	46	237.26	0.831	0.000	0.000
Scarborough to Osgodby Point	5,018	304.91	0.579	0.009	0.002
Seahouses	412	155.93	0.608	0.003	0.001
Shapinsay (Coastal)	34	247.36	0.843	0.000	0.000
South Aberdeenshire - Tysties	922	46.40	0.685	0.058	0.013
South Ronaldsay	102	224.77	0.822	0.000	0.000
South Sutor	132	201.01	0.726	0.000	0.000

Colony	Number of breeding adults (individuals)	Distance to the Array Area (km)	Proportion of foraging range at sea	Resulting weighting	Apportioning value
Staithe to Sandsend	2,214	274.60	0.582	0.005	0.001
Stonehaven to Wine Cove	87	51.00	0.675	0.005	0.001
Stronsay	315	245.62	0.851	0.001	0.000
Sule Skerry and Sule Stack SPA	186	305.64	0.829	0.000	0.000
Teesmouth and Cleveland Coast SPA	1,124	256.85	0.569	0.003	0.001
Westray	758	271.99	0.858	0.001	0.000
Whitby to Robin Hood's Bay	1,046	280.46	0.584	0.002	0.000
Yesnaby - Ness Point, Stromness	12	252.73	0.831	0.000	0.000
Yesnaby to Marwick (West Mainland)	2	260.08	0.835	0.000	0.000
Ythan Estuary, Sands of Forvie and Meikle Loch SPA	774	52.18	0.708	0.037	0.009

Table B.4: Full Breeding Season Apportioning Results, Including Non-designated Sites, for Great Black-backed Gull

Colony	Number of breeding adults (individuals)	Distance to the Array Area (km)	Proportion of foraging range at sea	Resulting weighting	Apportioning value
NA – no designated sites with connectivity to the Array Area					
Non-designated sites					
Buchan Ness to Collieston Coast SPA	72	55.88	0.684	0.383	0.366
Fowlsheugh SPA	16	51.30	0.548	0.126	0.121
Montrose Basin SPA	2	76.72	0.472	0.008	0.008
Ythan Estuary, Sands of Forvie and Meikle Loch SPA	2	52.18	0.613	0.014	0.013
Aberdeen City	18	53.20	0.511	0.141	0.135
Burn of Daff	2	47.05	0.528	0.019	0.019
Catterline to Inverbervie	4	55.04	0.536	0.028	0.027
Findon Ness - Hare Ness	2	45.97	0.542	0.020	0.019
Hall Bay to Craigeven Bay	2	50.05	0.521	0.017	0.017
Lunan Bay to Arbroath	8	81.90	0.490	0.028	0.026
Montrose	8	73.21	0.487	0.035	0.033
Montrose to Lunan Bay	3	74.99	0.499	0.012	0.012
Newtonhill - Hall Bay	2	48.36	0.520	0.019	0.018
South Aberdeenshire - Tysties	18	46.40	0.531	0.179	0.171
Stonehaven to Wine Cove	2	51.00	0.524	0.017	0.016

Table B.5: Full Breeding Season Apportioning Results, Including Non-designated Sites, for Herring Gull

Colony	Number of breeding adults (individuals)	Distance to the Array Area (km)	Proportion of foraging range at sea	Resulting weighting	Apportioning value
Buchan Ness to Collieston Coast SPA	4,154	55.88	0.704	0.239	0.181
Fowlsheugh SPA	2,070	51.30	0.542	0.184	0.139
Non-designated sites					
Aberdeen City	6,700	53.20	0.558	0.536	0.406
Brechin	42	84.21	0.409	0.002	0.001
Burn of Daff	326	47.05	0.564	0.033	0.025
Catterline to Inverbervie	1,014	55.04	0.533	0.080	0.060
Craigoshina	3	83.47	0.341	0.000	0.000
Findon Ness - Hare Ness	250	45.97	0.577	0.026	0.020
Fraserburgh	126	90.15	0.740	0.003	0.002
Girdle Ness to Hare Ness	134	45.52	0.590	0.014	0.011
Hall Bay to Craigeven Bay	30	50.05	0.542	0.003	0.002
Inverbervie to St Cyrus	56	58.60	0.516	0.004	0.003
Inverurie	44	71.49	0.502	0.002	0.002
Lunan Bay to Arbroath	939	81.90	0.467	0.038	0.029
Montrose	257	73.21	0.486	0.012	0.009
Montrose Basin SPA	790	76.72	0.470	0.036	0.027
Montrose to Lunan Bay	202	74.99	0.488	0.009	0.007
Newton Hill	136	49.09	0.548	0.013	0.010
Newtonhill - Hall Bay	102	48.36	0.554	0.010	0.008
Peterhead	646	64.17	0.741	0.027	0.020
Rosehearty to Bay of Cullen	658	107.63	0.682	0.011	0.008

Colony	Number of breeding adults (individuals)	Distance to the Array Area (km)	Proportion of foraging range at sea	Resulting weighting	Apportioning value
Sandhaven	2	93.06	0.730	0.000	0.000
South Aberdeenshire - Tysties	24	46.40	0.569	0.002	0.002
St Cyrus NNR	2	69.06	0.497	0.000	0.000
St Fergus	50	73.21	0.745	0.002	0.001
Stonehaven to Wine Cove	272	51.00	0.532	0.025	0.019
Transco Installations and Birse	2	84.56	0.310	0.000	0.000
Westhill, Loch of Skene, Garlogie Gas Station and Leuchar	70	60.69	0.508	0.005	0.004
Ythan Estuary, Sands of Forvie and Meikle Loch SPA	74	52.18	0.644	0.005	0.004

Table B.6: Full Breeding Season Apportioning Results, Including Non-designated Sites, for Arctic Tern

Colony	Number of breeding adults (individuals)	Distance to the Array Area (km)	Proportion of foraging range at sea	Resulting weighting	Apportioning value
NA – no designated sites with connectivity to the Array Area					
Non-designated sites					
Ythan Estuary, Sands of Forvie and Meikle Loch SPA	3,196	52.18	0.501	1	1.000

Table B.7: Full Breeding Season Apportioning Results, Including Non-designated Sites, for Guillemot

Colony	Number of breeding adults (individuals)	Distance to the Array Area (km)	Proportion of foraging range at sea	Resulting weighting	Apportioning value
Buchan Ness to Collieston Coast SPA	39,440	55.88	0.714	0.216	0.201
Fowlsheugh SPA	93,570	51.30	0.558	0.780	0.724
Non-designated sites					
Burn of Daff	465	47.05	0.584	0.004	0.004
Catterline to Inverbervie	6,037	55.04	0.542	0.045	0.042
Findon Ness - Hare Ness	1,577	45.97	0.599	0.015	0.014
Girdle Ness to Hare Ness	297	45.52	0.613	0.003	0.003
Lunan Bay to Arbroath	2,006	81.90	0.452	0.008	0.008
Montrose to Lunan Bay	27	74.99	0.473	0.000	0.000
Newton Hill	4	49.09	0.568	0.000	0.000
Newtonhill - Hall Bay	417	48.36	0.574	0.004	0.004
South Aberdeenshire - Tysties	50	46.40	0.593	0.000	0.000
Ythan Estuary, Sands of Forvie and Meikle Loch SPA	79	52.18	0.661	0.001	0.000

Table B.8: Full Breeding Season Apportioning Results, Including Non-designated Sites, for Razorbill

Colony	Number of breeding adults (individuals)	Distance to the Array Area (km)	Proportion of foraging range at sea	Resulting weighting	Apportioning value
Forth Islands SPA	7,631	115.07	0.401	0.094	0.064
Fowlsheugh SPA	18,844	51.30	0.592	0.790	0.536
St Abb's Head to Fast Castle SPA	3,928	127.88	0.487	0.032	0.022
Troup, Pennan and Lion's Heads SPA	6,054	107.04	0.663	0.052	0.035
Non-designated sites					
Buchan Ness to Collieston Coast SPA	7,807	55.88	0.740	0.221	0.150
Burn of Daff	198	47.05	0.631	0.009	0.006
Catterline to Inverbervie	3,727	55.04	0.564	0.142	0.097
Findon Ness - Hare Ness	1,245	45.97	0.644	0.060	0.041
Girdle Ness to Hare Ness	398	45.52	0.655	0.019	0.013
Hall Bay to Craigeven Bay	7	50.05	0.609	0.000	0.000
Lunan Bay to Arbroath	942	81.90	0.427	0.021	0.015
Montrose to Lunan Bay	76	74.99	0.460	0.002	0.001
Newton Hill	188	49.09	0.617	0.008	0.006
Newtonhill - Hall Bay	216	48.36	0.623	0.010	0.007
Portsoy to Cullen	62	129.32	0.522	0.000	0.000
Rosehearty to Bay of Cullen	109	107.63	0.644	0.001	0.001
South Aberdeenshire - Tysties	60	46.40	0.641	0.003	0.002
Stonehaven to Wine Cove	35	51.00	0.597	0.001	0.001
Ythan Estuary, Sands of Forvie and Meikle Loch SPA	198	52.18	0.702	0.007	0.005

Table B.9: Full Breeding Season Apportioning Results, Including Non-designated Sites, for Puffin

Colony	Number of breeding adults (individuals)	Distance to the Array Area (km)	Proportion of foraging range at sea	Resulting weighting	Apportioning value
Coquet Island SPA	50,058	182.92	0.577	0.328	0.119
Farne Islands SPA	87,504	150.62	0.588	0.832	0.301
Forth Islands SPA	85,846	115.07	0.566	1.452	0.525
Hoy SPA	860	233.21	0.803	0.002	0.001
North Caithness Cliffs SPA	6,078	221.21	0.782	0.020	0.007
Non-designated sites					
Auskerry SPA	446	260.69	0.843	0.001	0.000
Atton	100	109.04	0.602	0.002	0.001
Birsay Cliffs - Point of Buckquoy to Loop of Cruie	38	267.34	0.835	0.000	0.000
Brough of Birsay	5	268.20	0.834	0.000	0.000
Buchan Ness to Collieston Coast SPA	352	55.88	0.699	0.020	0.007
Burn of Daff	7	47.97	0.643	0.001	0.000
Caithness - Wick Bay to Freshwick Bay	3	200.27	0.777	0.000	0.000
Carr Craig, Eyebroughy and Haystack	3,778	156.44	0.544	0.036	0.013
Catterline to Inverbervie	10	56.11	0.622	0.001	0.000
Copinsay SPA	1,756	241.37	0.824	0.005	0.002
Costa Head	27	264.95	0.840	0.000	0.000
Deerness	2	234.71	0.827	0.000	0.000
East Caithness Cliffs SPA	368	190.53	0.749	0.002	0.001
Findon Ness - Hare Ness	19	46.68	0.648	0.002	0.001
Flotta and Calf of Flotta	6	231.73	0.805	0.000	0.000
Fowlsheugh SPA	318	51.30	0.627	0.024	0.009

Colony	Number of breeding adults (individuals)	Distance to the Array Area (km)	Proportion of foraging range at sea	Resulting weighting	Apportioning value
Green Holms	33	254.84	0.845	0.000	0.000
Hoy and South Walls - Tysties	88	229.79	0.800	0.000	0.000
Lunan Bay to Arbroath	26	82.98	0.598	0.001	0.000
Marwick Head SPA	2	264.96	0.830	0.000	0.000
Melvich to Duncansby Stacks SSSI	4	237.99	0.788	0.000	0.000
Newton Hill	2	49.77	0.638	0.000	0.000
Newtonhill - Hall Bay	3	49.05	0.640	0.000	0.000
Pentland Firth Islands SPA	9,140	220.95	0.796	0.030	0.011
Portsoy to Cullen	32	129.32	0.698	0.000	0.000
Rerwick Head to Mirkady Point	1	236.89	0.827	0.000	0.000
Rousay SPA	202	266.18	0.847	0.000	0.000
Rysa Little and Cava	2	238.79	0.807	0.000	0.000
Sanday	8	263.38	0.860	0.000	0.000
Shapinsay (Coastal)	12	247.36	0.836	0.000	0.000
Smoo to Melvich	11	294.35	0.783	0.000	0.000
South Ronaldsay	50	224.77	0.805	0.000	0.000
South Walls	1	230.29	0.801	0.000	0.000
Stronsay	1	248.82	0.851	0.000	0.000
Switha SPA	21	229.25	0.801	0.000	0.000
Troup, Pennan and Lion's Heads SPA	60	107.04	0.711	0.001	0.000
Westray - Rapness	1,534	270.00	0.858	0.003	0.001
Yesnaby to Marwick (West Mainland)	9	260.08	0.822	0.000	0.000