

Marine Aquaculture Site **Muck**

Appendix 1: Muck Site Charts

Mowi Scotland Limited

August 2022

Registered in Scotland No. 138843 Registered Office: 1st Floor, Admiralty Park Admiralty Road Rosyth FIFE KY11 2YW	Office postal address: Farms Office Glen Nevis Business Park Fort William PH33 6RX	Email: environment@mowi.com
		Website: http://mowi.com

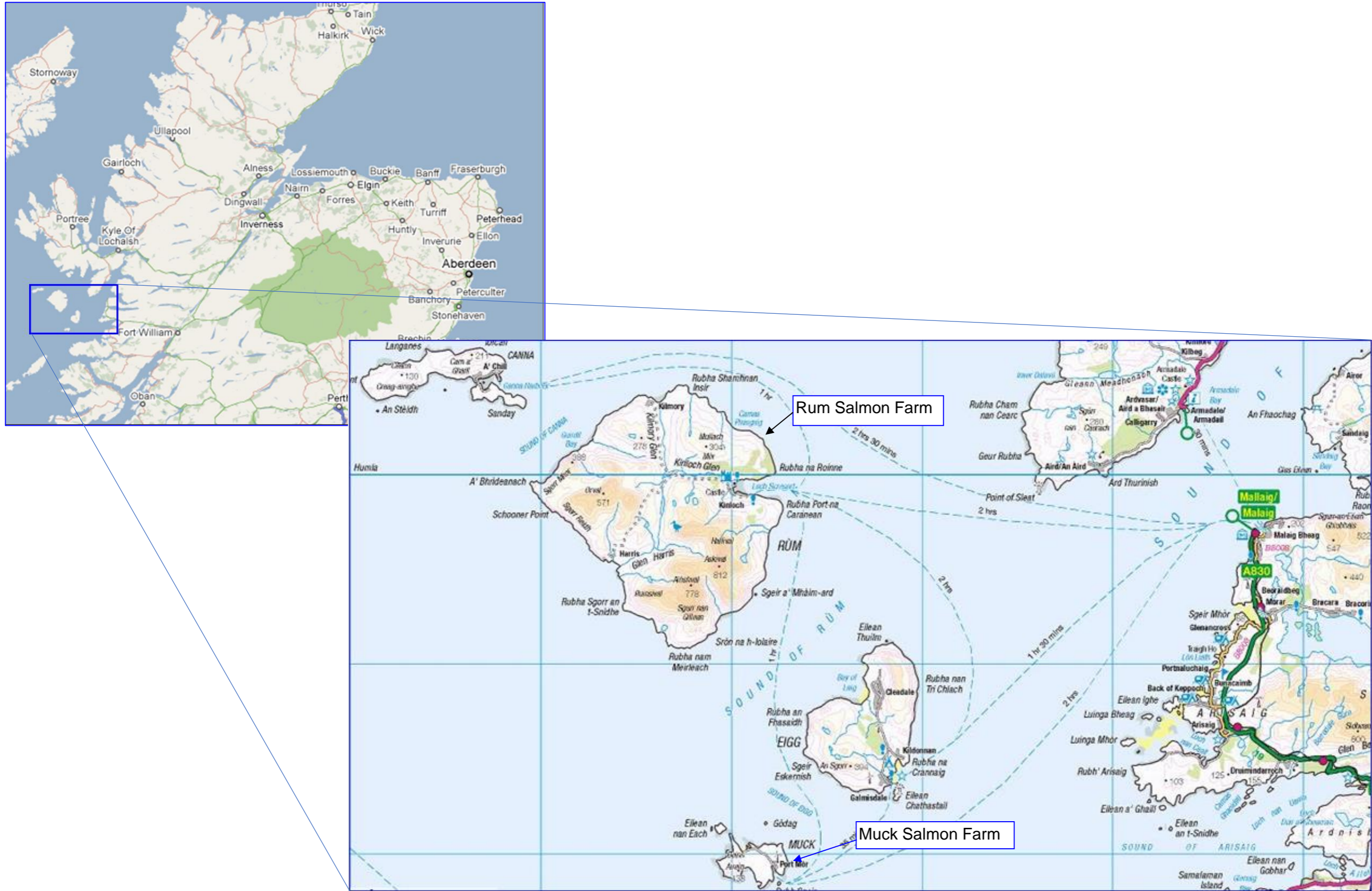


Figure 1: Location of the existing Muck Salmon Farm in relation to the Rum Salmon farm also operated by Mowi Scotland Limited.

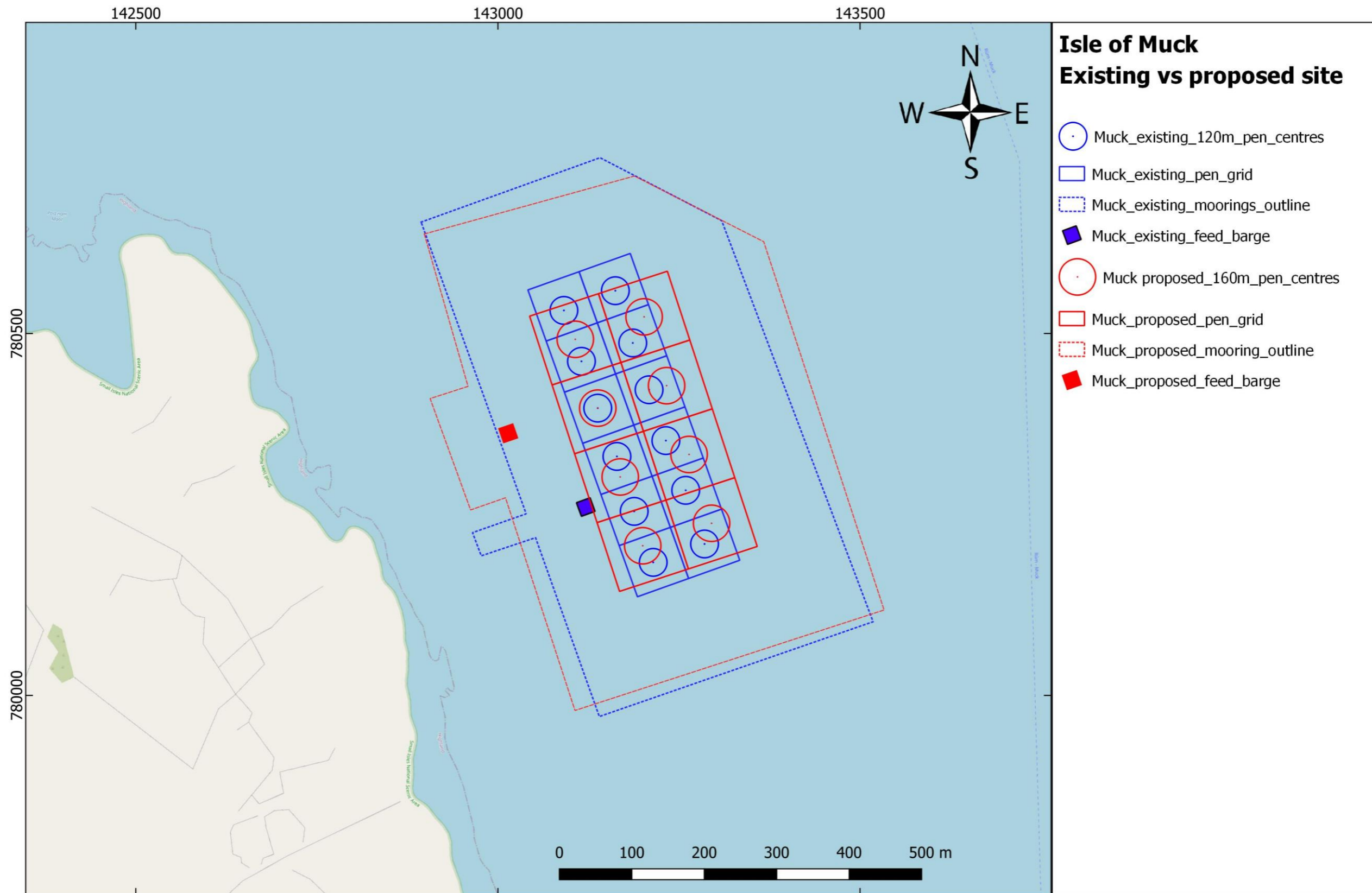


Figure 2: Muck salmon farm location map with existing and proposed site layouts showing all surface equipment and mooring extents.

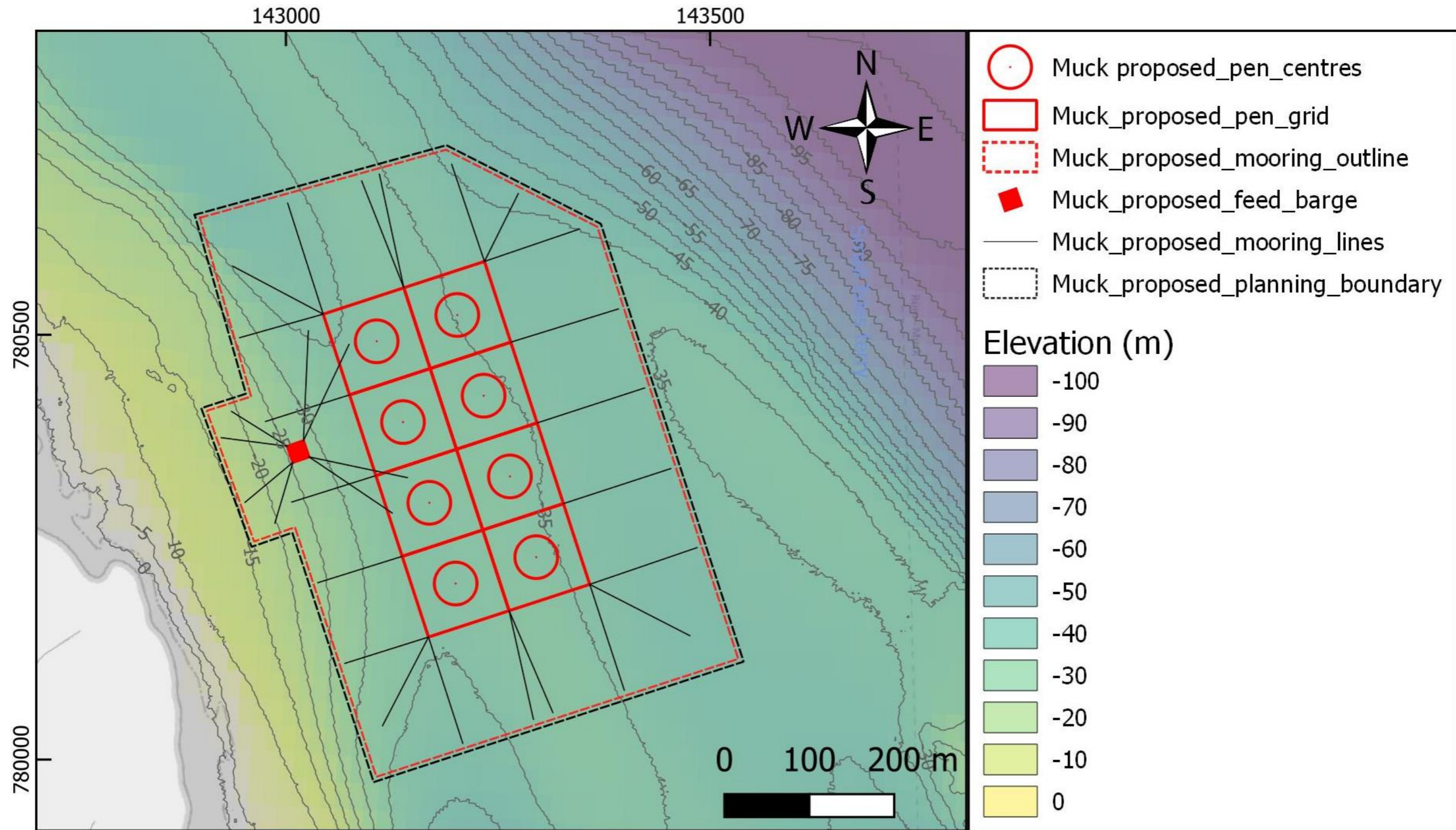


Figure 3: Bathymetry chart: Muck salmon farm detailed proposed site layout showing all surface equipment, provisional mooring extents and water depths.

EXISTING MUCK SITE

PEN CENTRES

56° 50.696'N	6° 12.876'W	E143091	N780532
56° 50.713'N	6° 12.808'W	E143162	N780559
56° 50.659'N	6° 12.848'W	E143115	N780462
56° 50.675'N	6° 12.780'W	E143186	N780487
56° 50.625'N	6° 12.822'W	E143138	N780397
56° 50.641'N	6° 12.754'W	E143209	N780422
56° 50.590'N	6° 12.792'W	E143164	N780330
56° 50.550'N	6° 12.764'W	E143188	N780254
56° 50.513'N	6° 12.734'W	E143214	N780184
56° 50.529'N	6° 12.666'W	E143285	N780209
56° 50.568'N	6° 12.696'W	E143259	N780283
56° 50.604'N	6° 12.727'W	E143232	N780352

PEN GRID OUTLINE

56° 50.696'N	6° 12.876'W	E143091	N780532
56° 50.713'N	6° 12.808'W	E143162	N780559
56° 50.659'N	6° 12.848'W	E143115	N780462
56° 50.675'N	6° 12.780'W	E143186	N780487

MOORING OUTLINE

56° 50.770'N	6° 12.670'W	E143309	N780656
56° 50.811'N	6° 12.840'W	E143344	N780730
56° 50.479'N	6° 12.431'W	E143518	N780102
56° 50.396'N	6° 12.794'W	E143140	N779971
56° 50.755'N	6° 13.077'W	E142894	N780654

FEED BARGE

56° 50.551'N	6° 12.830'W	E143121	N780260
--------------	-------------	---------	---------

PLANNING BOUNDARY

56° 50.770'N	6° 12.670'W	E143309	N780656
56° 50.811'N	6° 12.840'W	E143343	N780730
56° 50.479'N	6° 12.431'W	E143518	N780102
56° 50.396'N	6° 12.794'W	E143140	N779971
56° 50.755'N	6° 13.077'W	E142894	N780654
56° 50.543'N	6° 12.910'W	E154212	N779576
56° 50.527'N	6° 12.981'W	E142965	N780225
56° 50.510'N	6° 12.967'W	E142977	N780193
56° 50.526'N	6° 12.895'W	E143052	N780218

PROPOSED MUCK SITE

PEN CENTRES

56° 50.525'N	6° 12.750'W	E143200	N780207
56° 50.545'N	6° 12.658'W	E143295	N780238
56° 50.575'N	6° 12.786'W	E143169	N780302
56° 50.595'N	6° 12.694'W	E143264	N780333
56° 50.625'N	6° 12.822'W	E143138	N780397
56° 50.645'N	6° 12.731'W	E143233	N780428
56° 50.675'N	6° 12.858'W	E143107	N780492
56° 50.695'N	6° 12.767'W	E143202	N780523

PEN GRID OUTLINE

56° 50.490'N	6° 12.777'W	E143168	N780144
56° 50.530'N	6° 12.594'W	E143358	N780206
56° 50.690'N	6° 12.922'W	E143044	N780524
56° 50.730'N	6° 12.739'W	E143234	N780586

MOORING OUTLINE

56° 50.746'N	6° 13.071'W	E142898	N780638
56° 50.799'N	6° 12.792'W	E143189	N780718
56° 50.756'N	6° 12.611'W	E143367	N780627
56° 50.488'N	6° 12.417'W	E143533	N780118
56° 50.399'N	6° 12.828'W	E143106	N779979
56° 50.554'N	6° 12.939'W	E143010	N780273
56° 50.544'N	6° 12.986'W	E142962	N780256
56° 50.624'N	6° 13.050'W	E142906	N780410
56° 50.635'N	6° 13.000'W	E142959	N780427
56° 50.746'N	6° 13.071'W	E142898	N780638

FEED BARGE

56° 50.602'N	6° 12.941'W	E143014	N780362
--------------	-------------	---------	---------

PLANNING BOUNDARY

56° 50.748'N	6° 13.078'W	E142892	N780641
56° 50.802'N	6° 12.791'W	E143189	N780723
56° 50.758'N	6° 12.607'W	E143371	N780630
56° 50.487'N	6° 12.411'W	E143540	N780115
56° 50.396'N	6° 12.830'W	E143103	N779973
56° 50.551'N	6° 12.942'W	E143007	N780267
56° 50.540'N	6° 12.988'W	E142959	N780250
56° 50.626'N	6° 13.056'W	E142900	N780413
56° 50.637'N	6° 13.006'W	E142953	N780430
56° 50.748'N	6° 13.078'W	E142892	N780641