

A DRAWINGS



0 100 200

Imagery source: Esri, DigitalGlobe, GeoEye, Earthstar Geographic, CNES/Airbus DS, USDA, USGS, AeroGRID, IGN, and the GIS

Legend

- Terrestrial Boundary
- Marine Boundary

Do not scale this map

Client

Clydeport Operations Ltd

Project

Hunterston Construction Yard

Title

Location Map

Status

Final

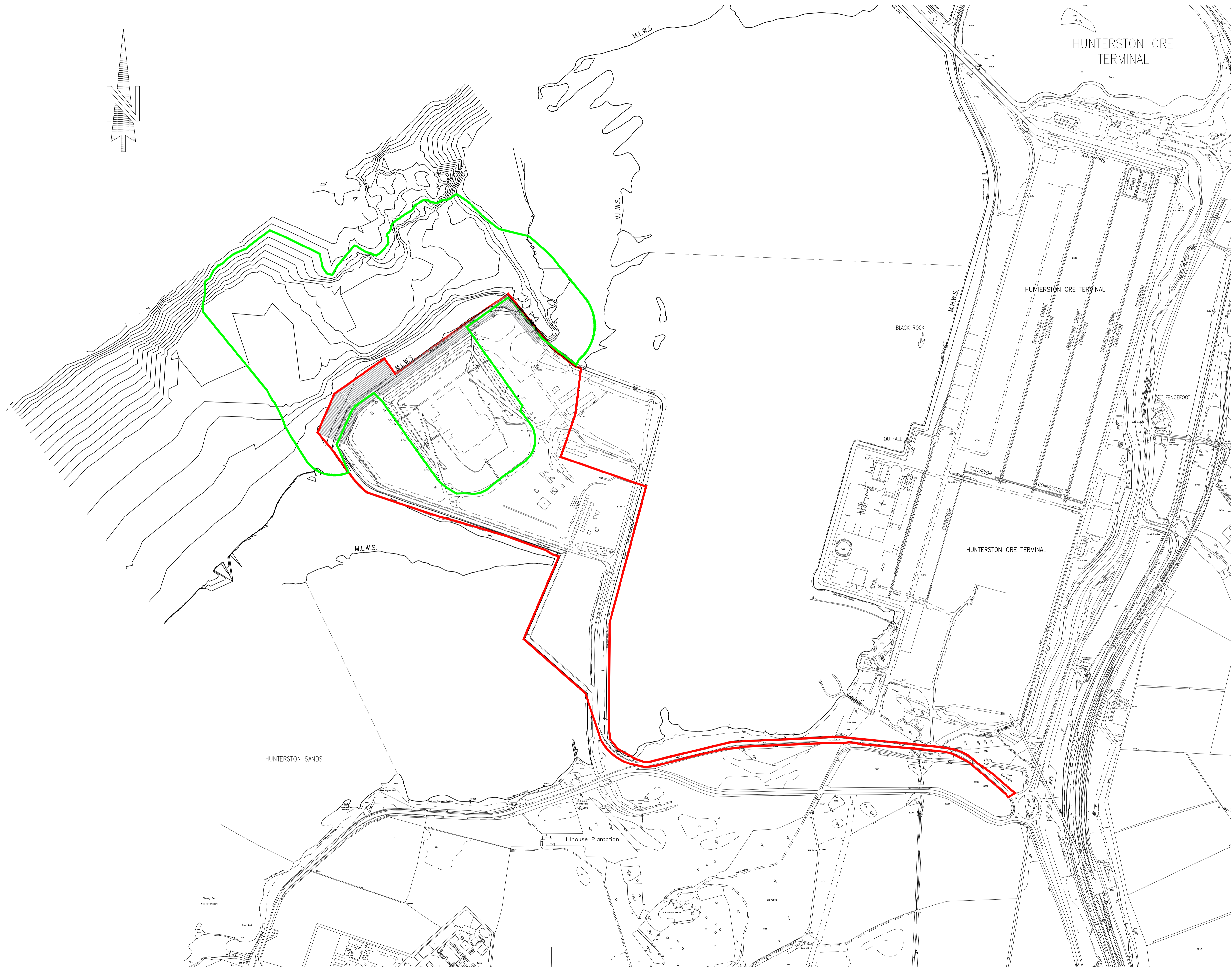
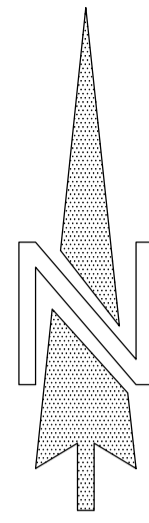
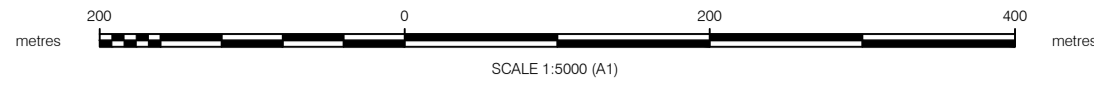
Drawing No. 176482-QGIS001	Revision 1	Date 23 Aug 2023
Drawn JS	Checked GD	Approved GD



Scale 1:8,500 @ A1

Rev	Date	Amendment	Initials
-	-	-	-



Craighall Business Park, Eagle Street, Glasgow, G4 9XA
T: 0141 341 5040 E: info@envirocentre.co.uk W: www.envirocentre.co.uk



LEGEND	
	MARINE CONSENT BOUNDARY
	TERRESTRIAL PLANNING CONSENT BOUNDARY

Reproduced from Ordnance Survey Superplan Data © Crown Copyright all Rights reserved. User licence No. 100002501.

REV	DATE	REVISION DESCRIPTION	DRN	VER
P02	01.09.23	LAYOUT REVISED	JM	A.N.
P01	03.08.23	FIRST ISSUE	LP	A.N.

THIS DRAWING IS COPYRIGHT . DO NOT SCALE FROM THIS DRAWING.

Arch Henderson
1919

Civil Engineers
Structural Engineers
Principal Designers
Architects
Geotechnical services
Environmental services

142 St. Vincent Street, Glasgow G2 5LA.
Tel : 0141 227 3060 - Fax : 0141 248 9542
www.arch-henderson.co.uk - email : glasgow@arch-henderson.co.uk

Offices in: Aberdeen, Dundee, Falkland Islands, Glasgow, Inverness, Lerwick, Southampton, Storness and Thurso

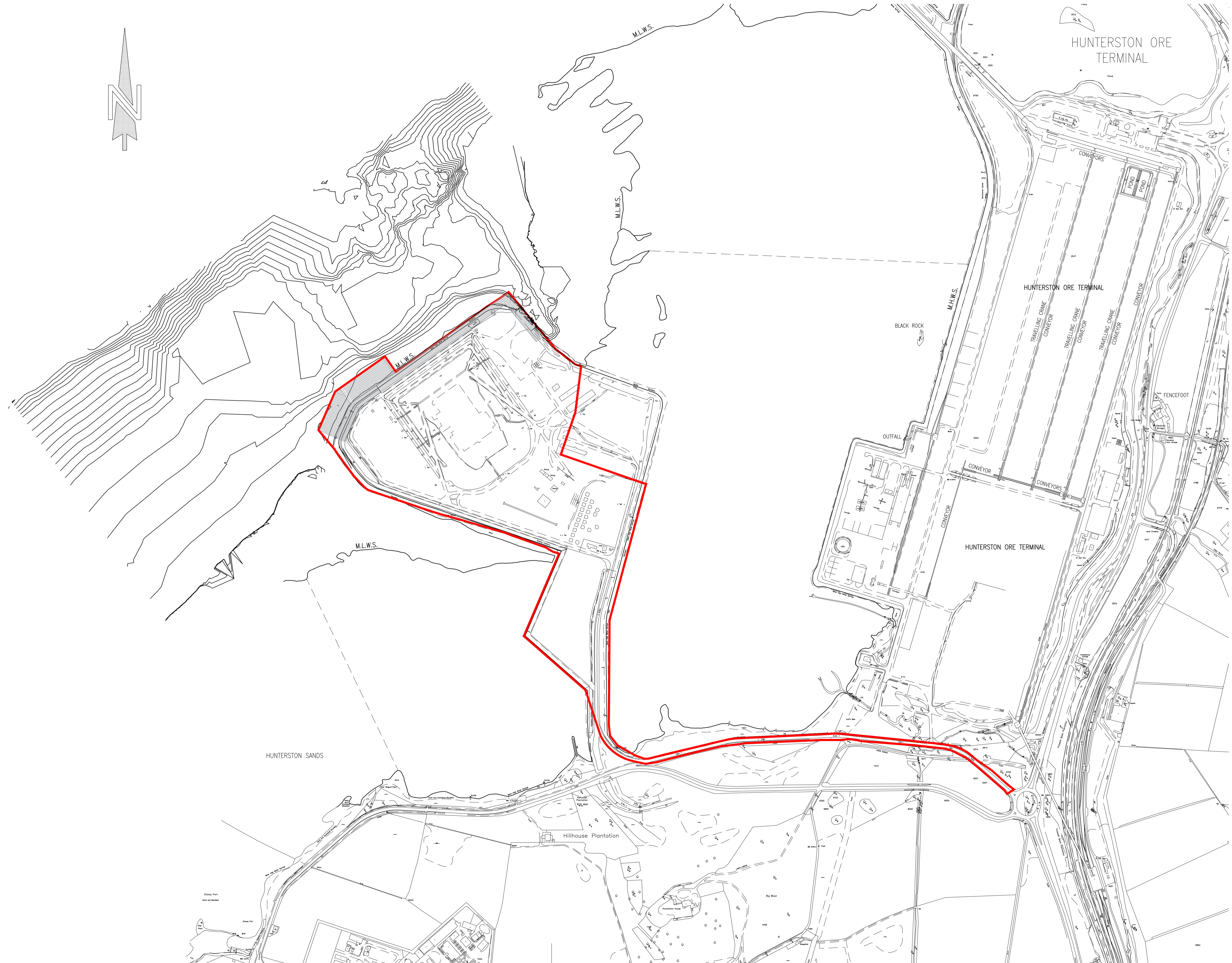
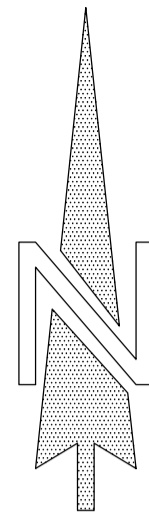
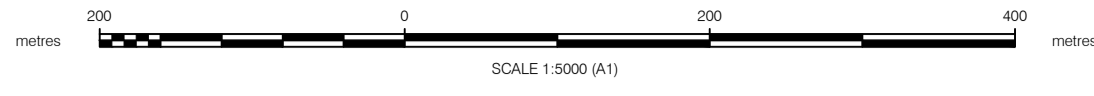
PROJECT :
**CLYDEPORT OPERATIONS LTD
HUNTERSTON CONSTRUCTION YARD**

TITLE :
SITE PLAN CONSENT BOUNDARIES

DRAWN : LP	DATE : 03.08.2023	VERIFIED : A.N.	APPROVED : A.A.K.
---------------	----------------------	--------------------	----------------------

SCALE : (A1) NTS	DRAWING STATUS : PRELIMINARY
---------------------	---------------------------------

DO NOT SCALE	DRAWING No : 235001-HMY-AHN-DR-C-1000	REV : P02
--------------	--	--------------



LEGEND

— PoAN CONSENT BOUNDARY

Reproduced from Ordnance Survey Superplan Data © Crown Copyright all Rights reserved. User licence No. 100002501.

P02	21.09.23	LAYOUT REVISED	JM	A.N.
P01	01.09.23	FIRST ISSUE	JM	A.N.
REV	DATE	REVISION DESCRIPTION	DRN	VER

THIS DRAWING IS COPYRIGHT . DO NOT SCALE FROM THIS DRAWING.

Arch Henderson 1919

Civil Engineers
Structural Engineers
Principal Designers
Architects
Geotechnical services
Environmental services

142 St. Vincent Street, Glasgow G2 5LA.
Tel : 0141 227 3060 - Fax : 0141 248 9542
www.arch-henderson.co.uk - email : glasgow@arch-henderson.co.uk

Offices in: Aberdeen, Dundee, Falkland Islands, Glasgow, Inverness, Lerwick, Southampton, Storness and Thurso

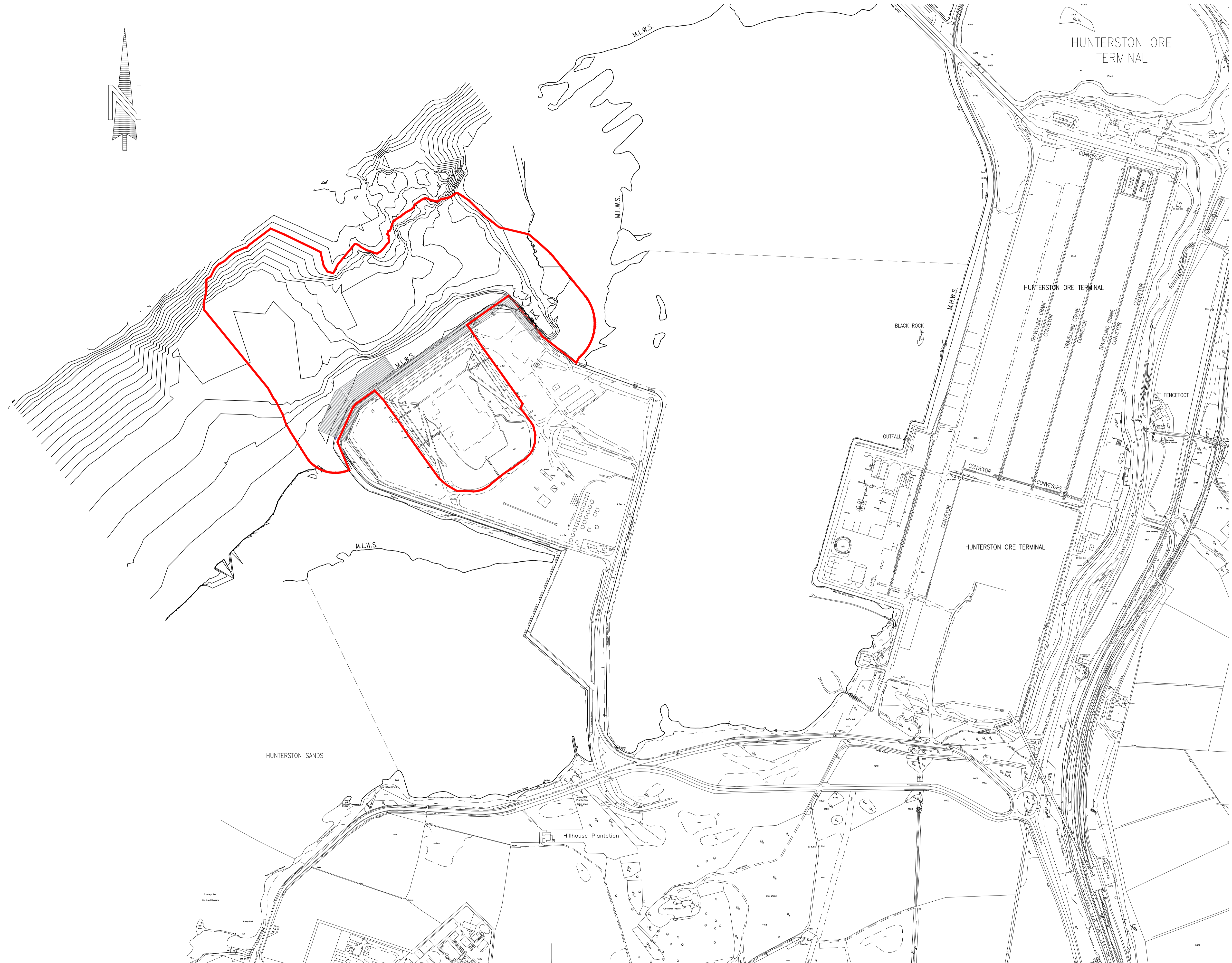
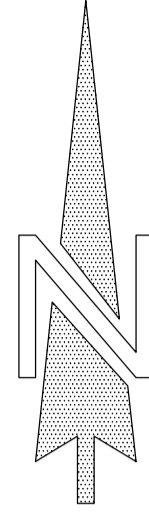
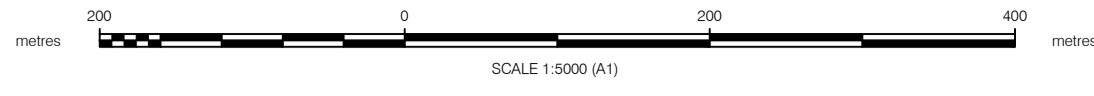
PROJECT :
**CLYDEPORT OPERATIONS LTD
HUNTERSTON CONSTRUCTION YARD**

TITLE :
PoAN CONSENT BOUNDARY

DRAWN : JM	DATE : 01/09/23	VERIFIED : A.N.	APPROVED : A.A.K.
---------------	--------------------	--------------------	----------------------

SCALE : (A1) NTS	DRAWING STATUS : PRELIMINARY
---------------------	---------------------------------

DO NOT SCALE	DRAWING No : 235001-HMY-AHN-DR-C-1001	REV : P02
--------------	--	--------------



LEGEND

— MARINE CONSENT BOUNDARY

Reproduced from Ordnance Survey Superplan Data © Crown Copyright all Rights reserved. User licence No. 100002501.

P02	21.09.23	LAYOUT REVISED	JM	A.N.
P01	01.09.23	FIRST ISSUE	JM	A.N.
REV	DATE	REVISION DESCRIPTION	DRN	VER

THIS DRAWING IS COPYRIGHT . DO NOT SCALE FROM THIS DRAWING.

Arch Henderson 1919

Civil Engineers
Structural Engineers
Principal Designers
Architects
Geotechnical services
Environmental services

142 St. Vincent Street, Glasgow G2 5LA.
Tel : 0141 227 3060 - Fax : 0141 248 9542
www.arch-henderson.co.uk - email : glasgow@arch-henderson.co.uk

Offices in: Aberdeen, Dundee, Falkland Islands, Glasgow, Inverness, Lerwick, Southampton, Storness and Thurso

PROJECT :
**CLYDEPORT OPERATIONS LTD
HUNTERSTON CONSTRUCTION YARD**

TITLE :
MARINE CONSENT BOUNDARY

DRAWN : JM	DATE : 01/09/23	VERIFIED : A.N.	APPROVED : A.A.K.
---------------	--------------------	--------------------	----------------------

SCALE : (A1) NTS	DRAWING STATUS : PRELIMINARY
---------------------	---------------------------------

DO NOT SCALE	DRAWING No : 235001-HMY-AHN-DR-C-1002	REV : P02
--------------	--	--------------



Imagery source: Esri, DigitalGlobe, GeoEye, Earthstar Geographic, CNES/Airbus DS, USDA, USGS, AeroGRID, IGN, and the GIS

Legend

 Dredging Boundary

Do not scale this map

Client
Clydeport Operations Ltd

Project
Hunterston Construction Yard

Title
Maximum Dredging Boundary

Status
Final

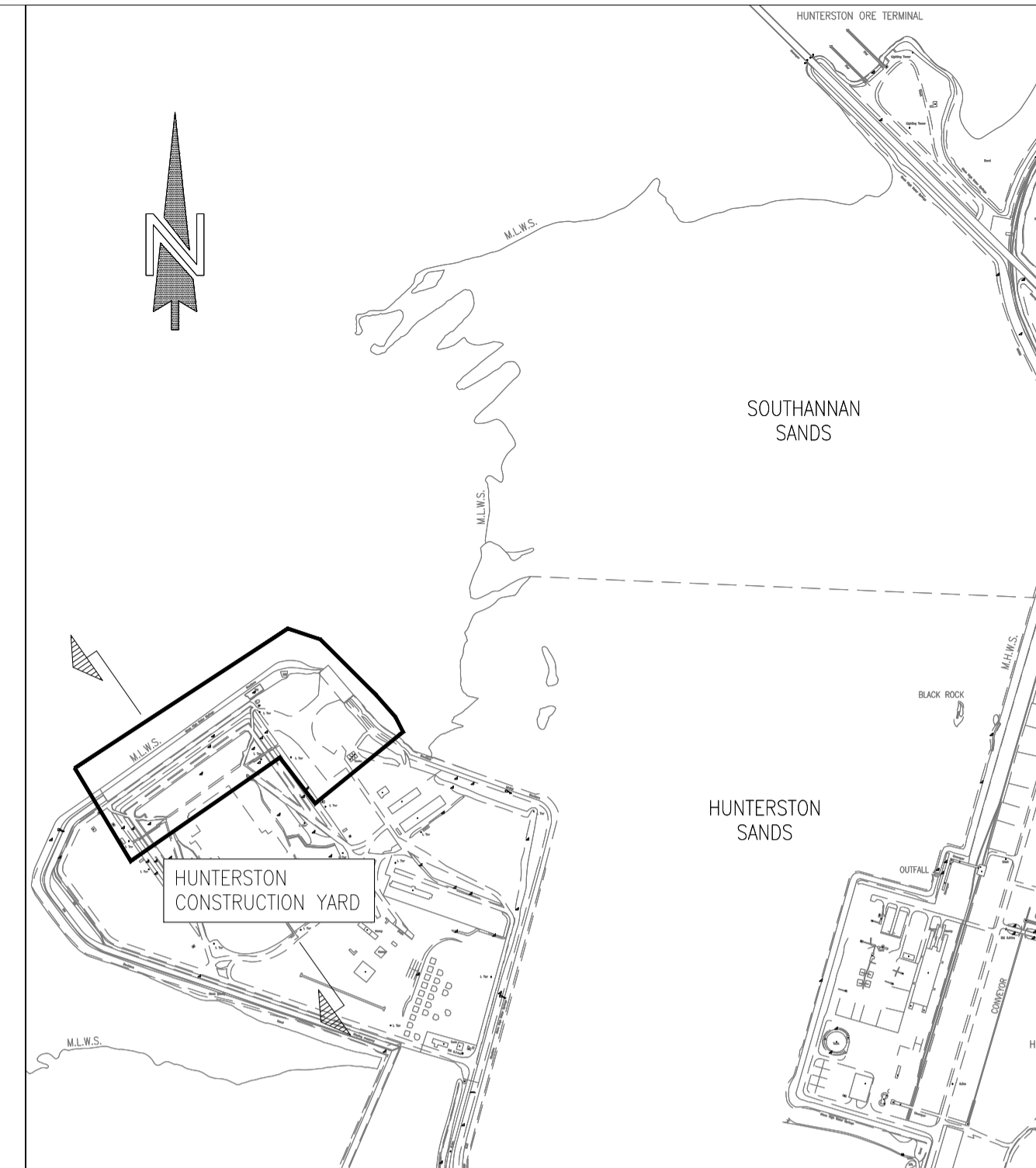
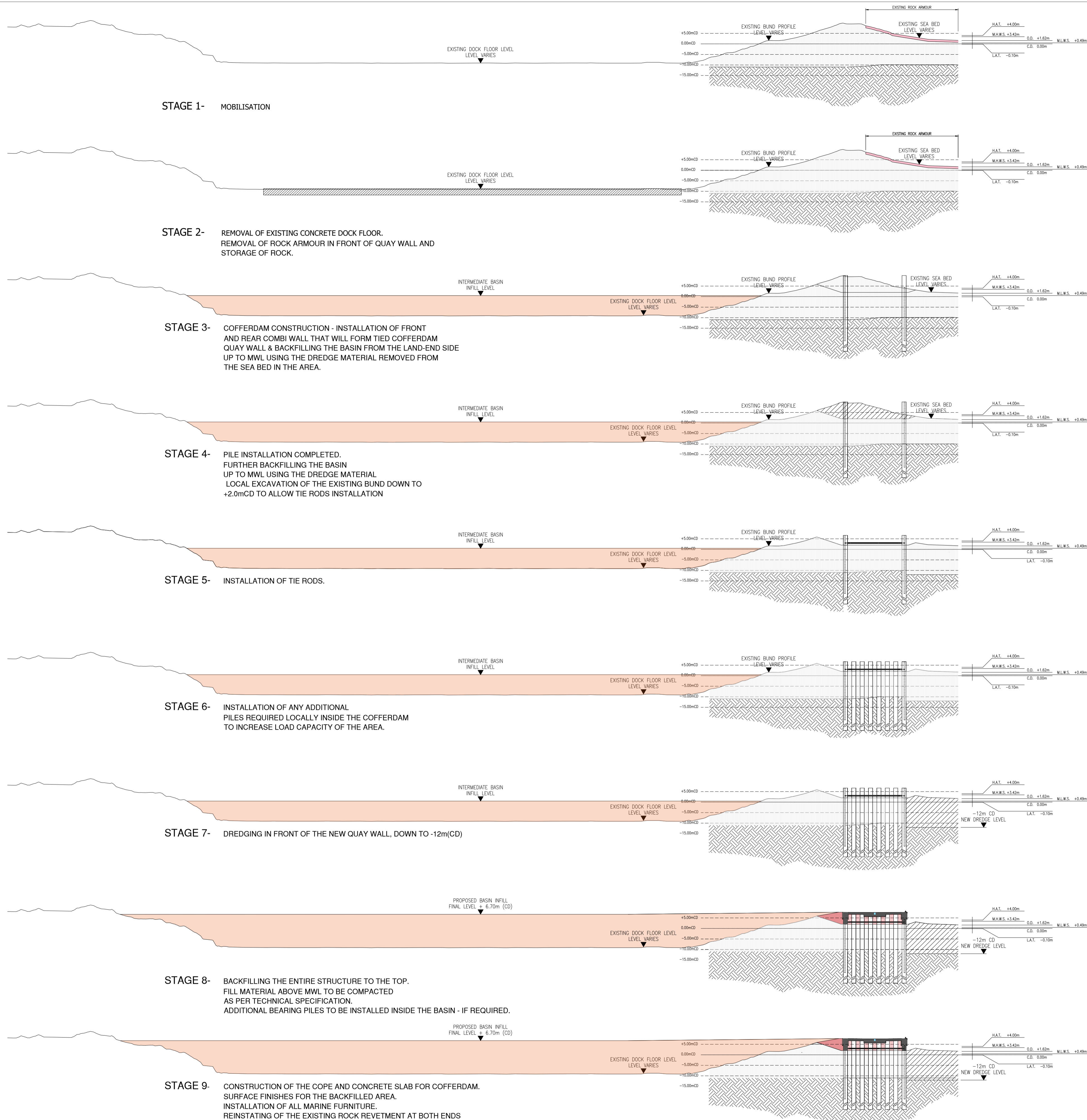
Drawing No. 176482-QGIS007	Revision --	Date 14 Nov 23
Drawn JSH	Checked GD	Approved GD

Scale
1:2,477 @ A1

Rev	Date	Amendment	Initials
-	-	-	-



Craighall Business Park, Eagle Street, Glasgow, G4 9XA
T: 0141 341 5040 E: info@envirocentre.co.uk W: www.envirocentre.co.uk



LOCATION PLAN
1:10,000

Reproduced from Ordnance Survey Superplan Data © Crown Copyright all Rights reserved. User licence No. 100002501.

REV	DATE	REVISION DESCRIPTION	DRN	VER
P03	02.10.23	STAGES 2 AND 5 UPDATED TO SUIT EXISTING ROCK ARMOUR REFERENCE.	K.M.	M.W.
P02	21.09.23	SECOND ISSUE. BASIN SECTIONS REMOVED.	K.M.	A.N.
P01	01.09.23	FIRST ISSUE	JM	A.N.

THIS DRAWING IS COPYRIGHT. DO NOT SCALE FROM THIS DRAWING.

Arch Henderson 1919

Civil Engineers
Structural Engineers
Principal Designers
Architects
Geotechnical services
Environmental services

142 St. Vincent Street, Glasgow G2 5LA
Tel: 0141 227 8060 - Fax: 0141 249 9542
www.arch-henderson.co.uk - email: glasgow@arch-henderson.co.uk

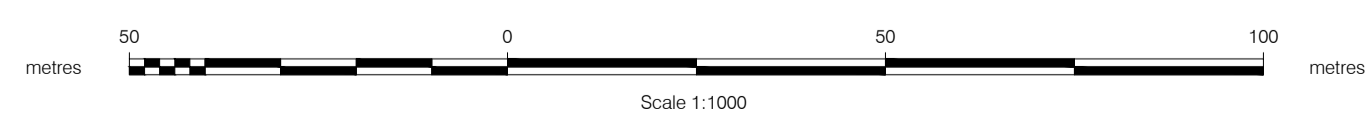
Offices in: Aberdeen, Dundee, Falkland Islands, Glasgow, Inverness, Lewick, Southampton, Storness and Thurso

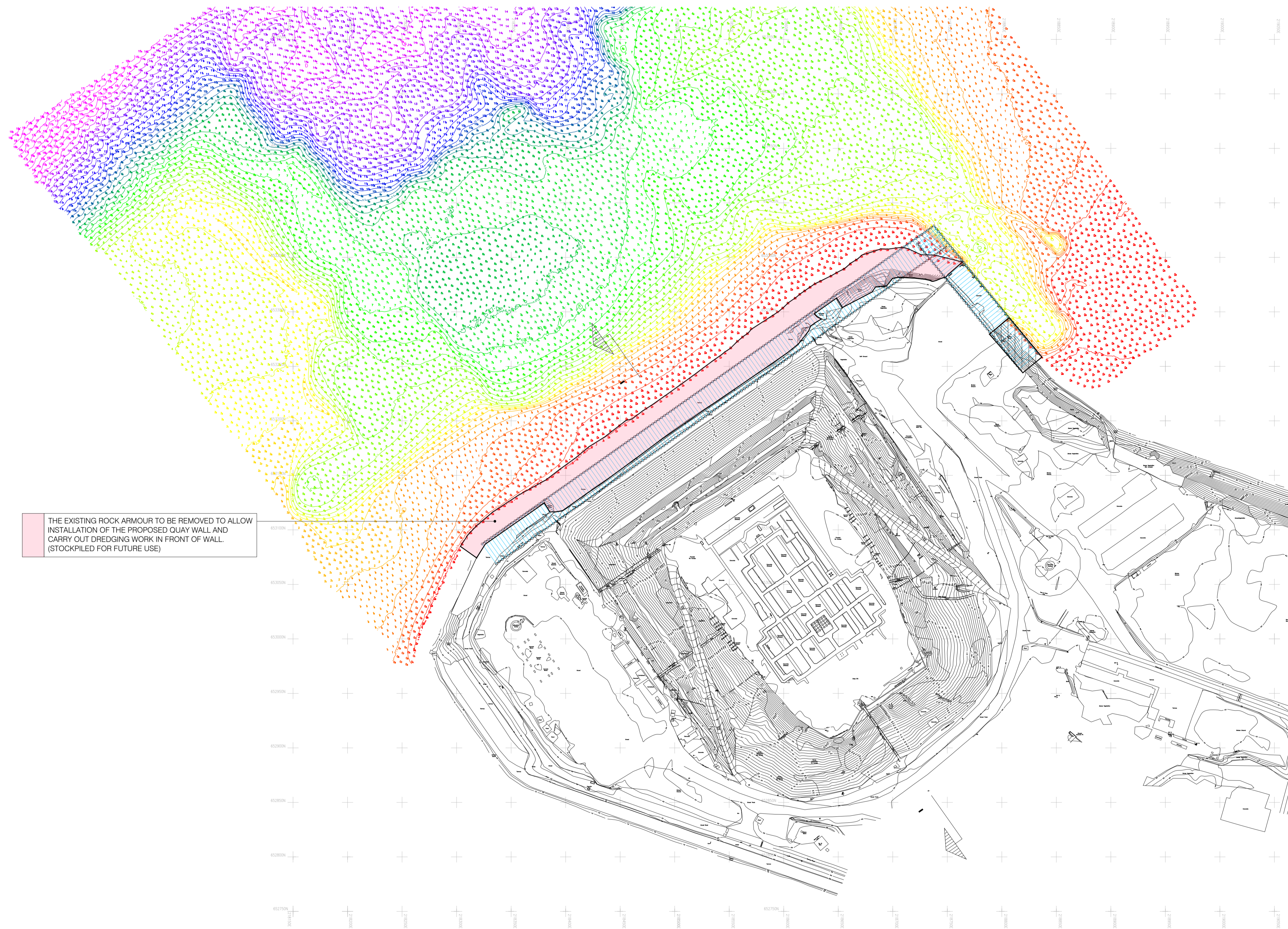
PROJECT:
CLYDEPORT OPERATIONS LTD
HUNTERSTON CONSTRUCTION YARD

TITLE:
CONSTRUCTION PHASE PROCESS
SHEET 1 of 2 - CONCEPT

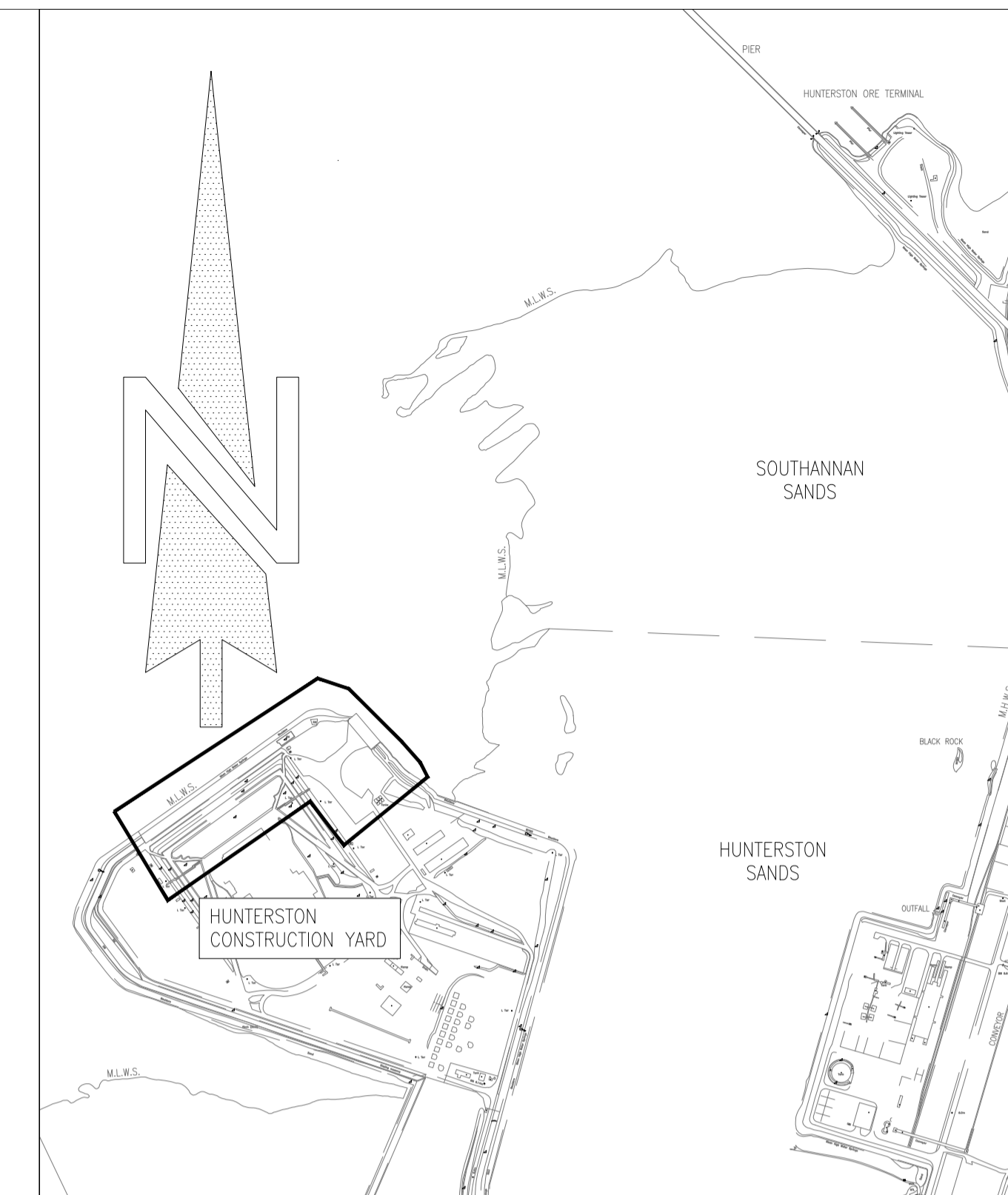
DRAWN: K.M.	DATE: 21/09/23	VERIFIED: M.W.	APPROVED: A.K.
SCALE: (A1) 1:10,000, 1:1000		DRAWING STATUS: PRELIMINARY	

DO NOT SCALE DRAWING No: HMY-AHN-ZZ-XX-SK-C-0001 REV: P03





THE EXISTING ROCK ARMOUR TO BE REMOVED TO ALLOW INSTALLATION OF THE PROPOSED QUAY WALL AND CARRY OUT DREDGING WORK IN FRONT OF WALL. (STOCKPILED FOR FUTURE USE)



LOCATION PLAN
1:10,000

Reproduced from Ordnance Survey Superplan Data © Crown Copyright all Rights reserved. User licence No. 10002501.

REV	DATE	REVISION DESCRIPTION	DRN	VER
P03	02.10.23	EXISTING ROCK ARMOUR REMOVAL LIMITS SHOWN. LAYOUT REVISED.	K.M.	M.W.
P02	21.09.23	SECOND ISSUE. SECTION MARKER ADDED	K.M.	A.N.
P01	01.09.23	FIRST ISSUE	JM	A.N.

THIS DRAWING IS COPYRIGHT . DO NOT SCALE FROM THIS DRAWING.

Arch Henderson 1919

Civil Engineers
Structural Engineers
Principal Designers
Architects
Geotechnical services
Environmental services

142 St. Vincent Street, Glasgow G2 5LA
Tel : 0141 227 3060 - Fax : 0141 249 9542
www.arch-henderson.co.uk - email : glasgow@arch-henderson.co.uk

Offices in: Aberdeen, Dundee, Falkland Islands, Glasgow, Inverness, Lewick, Southampton, Stromness and Thurso

OPTION 1 - CONSTRUCT APPROXIMATELY 450m LONG QUAY WALL WITH ADDITIONAL 150m LONG QUAY AT THE EAST SIDE.

The structure will be constructed in the form of a combined wall, made of large diameter tube piles with sheet AZ piles between. The front wall will be connected to the rear wall using steel tie rods. The large tube piles will be approximately 35m long, driven to refusal specified by the designer- subject to design load requirements. Installation of tie rods above MWL will significantly extend the gap between tides for the rod installation, however it will also potentially increase the length of the piles and therefore will increase the material cost. Potentially, additional tubular piles will be installed within the cofferdam locally to increase the load capacity in the area. The basin located behind the cofferdam will be filled in using the dredged material. Dependent on load confirmation, piled foundations may be required.

- Pros:
- 450m long quay wall will allow various vessels to berth against the structure simultaneously.
 - Additional loading area will be provided at the East side.

- Cons:
- Construction cost significantly higher than for option 3.
 - To reduce the cofferdam construction time at least 8 items of plant will have to drive piles at the same time.
 - East side structure will required to be shared with other site tenant.
 - Dredging restrictions due to environmental limitations.

DO NOT SCALE DRAWING No: HMY-AHN-ZZ-XX-SK-C-0002 REV: P03