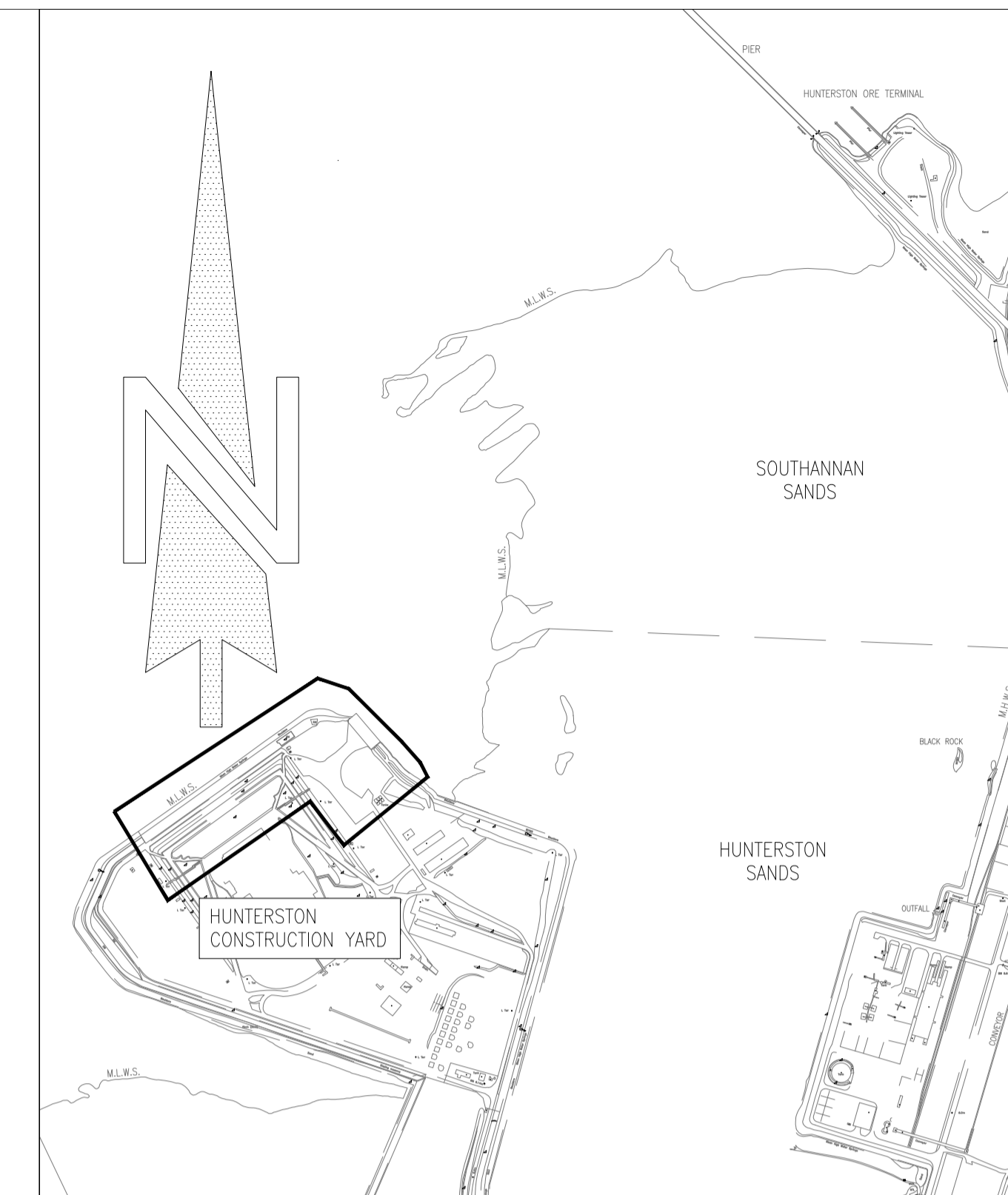


THE EXISTING ROCK ARMOUR TO BE REMOVED TO ALLOW INSTALLATION OF THE PROPOSED QUAY WALL AND CARRY OUT DREDGING WORK IN FRONT OF WALL. (STOCKPILED FOR FUTURE USE)



LOCATION PLAN
1:10,000

Reproduced from Ordnance Survey Superplan Data © Crown Copyright all Rights reserved. User licence No. 10002501.

REV	DATE	REVISION DESCRIPTION	DRN	VER
P03	02.10.23	EXISTING ROCK ARMOUR REMOVAL LIMITS SHOWN. LAYOUT REVISED.	K.M.	M.W.
P02	21.09.23	SECOND ISSUE. SECTION MARKER ADDED	K.M.	A.N.
P01	01.09.23	FIRST ISSUE	JM	A.N.

THIS DRAWING IS COPYRIGHT . DO NOT SCALE FROM THIS DRAWING.

Arch Henderson
1919

Civil Engineers
Structural Engineers
Principal Designers
Architects
Geotechnical services
Environmental services

142 St. Vincent Street, Glasgow G2 5LA
Tel : 0141 227 3060 - Fax : 0141 249 9542
www.arch-henderson.co.uk - email : glasgow@arch-henderson.co.uk

Offices in: Aberdeen, Dundee, Falkland Islands, Glasgow, Inverness, Lewick, Southampton, Stromness and Thurso

PROJECT :
CLYDEPORT OPERATIONS LTD
HUNTERSTON CONSTRUCTION YARD

TITLE :
SCHEME OPTIONS - OPTION 2
FOR DISCUSSION PURPOSES

DRAWN : JM	DATE : 01/09/23	VERIFIED : A.N.	APPROVED :
SCALE : (A1) NTS		DRAWING STATUS : PRELIMINARY	

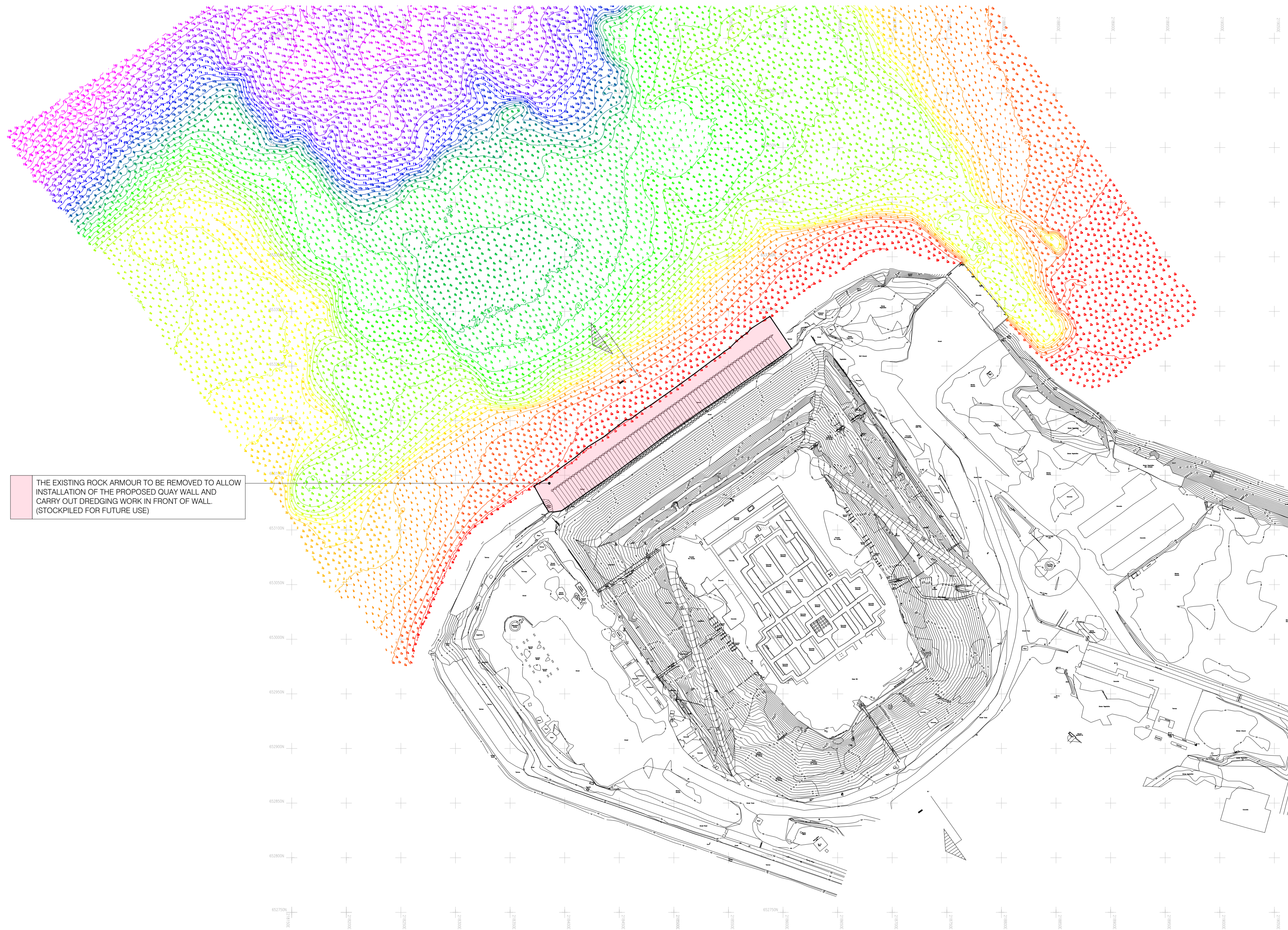
DO NOT SCALE DRAWING No: HMY-AHN-ZZ-XX-SK-C-0003 REV: P03

OPTION 2 - CONSTRUCT APPROXIMATELY 450m LONG QUAY WALL WITH ADDITIONAL 150m LONG ANGLED QUAY TO THE SOUTH WEST.

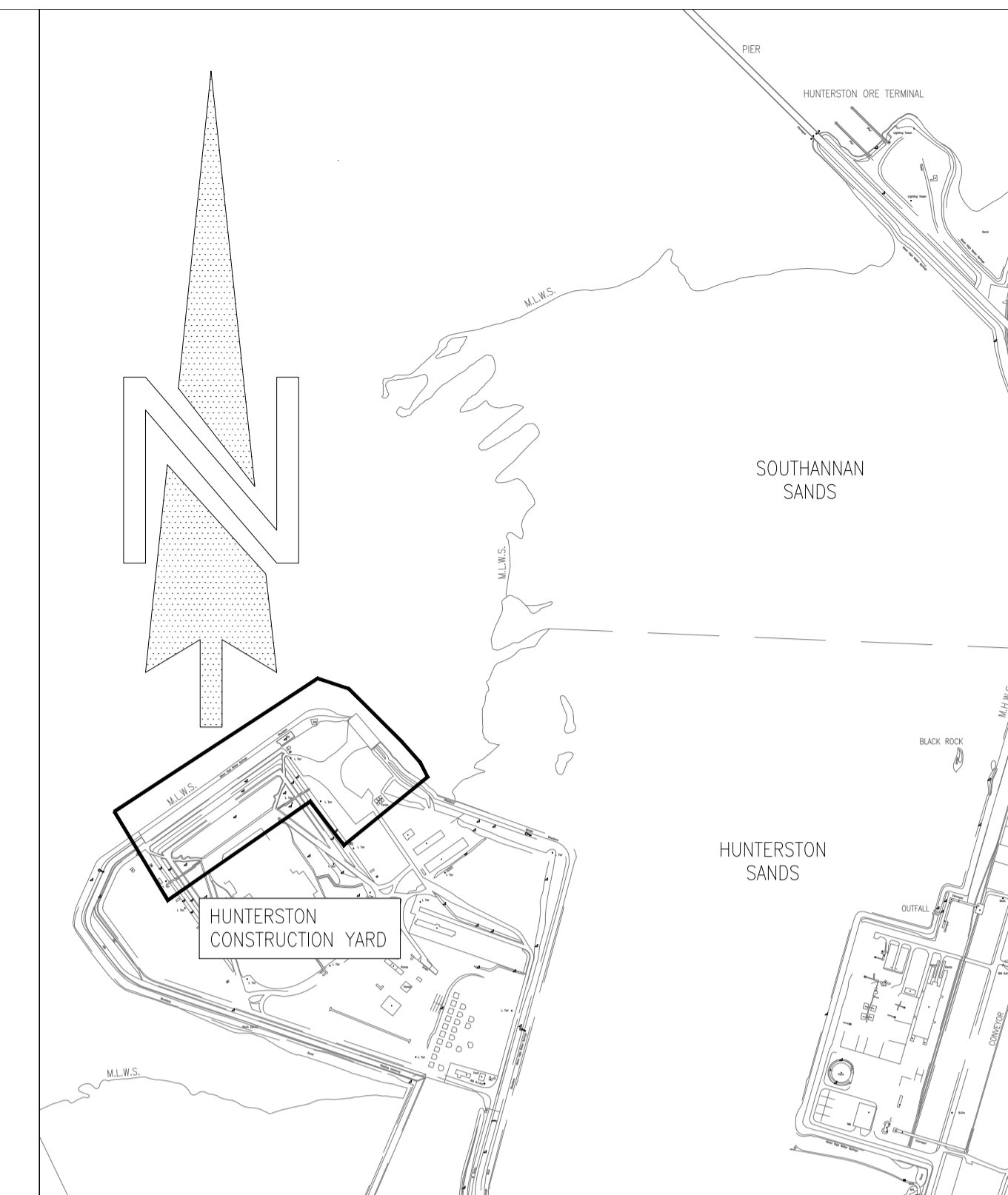
The structure will be constructed in the form of combined wall, made of large diameter tube piles with sheet AZ piles between. The front wall will be connected to the rear wall using steel tie rods. The large tube piles will be approximately 35m long, driven to refusal specified by the designer- subject to design load requirements. Installation of tie rods above MWL will significantly extend the gap between tides for the rod installation, however it will also potentially increase the length of the piles and therefore will increase the material cost. Potentially, additional tubular piles will be installed within the cofferdam locally to increase the load capacity in the area. The basin located behind the cofferdam will be filled in using the dredge material. Dependent on load confirmation, piled foundations may be required.

- Pros:
- 450m long quay wall will allow various vessels to berth against the structure simultaneously.
 - Additional loading area will be provided to the South West.

- Cons:
- Construction cost significantly higher than for option 3.
 - To reduce the cofferdam construction time at least 8 items of plant will have to drive piles at the same time.
 - Dredging restrictions due to environmental limitations.



THE EXISTING ROCK ARMOUR TO BE REMOVED TO ALLOW INSTALLATION OF THE PROPOSED QUAY WALL AND CARRY OUT DREDGING WORK IN FRONT OF WALL. (STOCKPILED FOR FUTURE USE)



LOCATION PLAN
1:10,000

Reproduced from Ordnance Survey Superplan Data © Crown Copyright all Rights reserved. User licence No. 10002501.

REV	DATE	REVISION DESCRIPTION	DRN	VER
P03	02.10.23	EXISTING ROCK ARMOUR REMOVAL LIMITS SHOWN. LAYOUT REVISED.	K.M.	M.W.
P02	21.09.23	SECOND ISSUE. SECTION MARKER ADDED	K.M.	A.N.
P01	01.09.23	FIRST ISSUE	JM	A.N.

THIS DRAWING IS COPYRIGHT . DO NOT SCALE FROM THIS DRAWING.



Civil Engineers
Structural Engineers
Principal Designers
Architects
Geotechnical services
Environmental services

142 St Vincent Street, Glasgow G2 5LA
Tel : 0141 227 3060 - Fax : 0141 249 9542
www.arch-henderson.co.uk - email : glasgow@arch-henderson.co.uk

Offices in: Aberdeen, Dundee, Falkland Islands, Glasgow, Inverness, Lewick, Southampton, Stromness and Thurso

PROJECT :
CLYDEPORT OPERATIONS LTD
HUNTERSTON CONSTRUCTION YARD

TITLE :
SCHEME OPTIONS - OPTION 3
FOR DISCUSSION PURPOSES

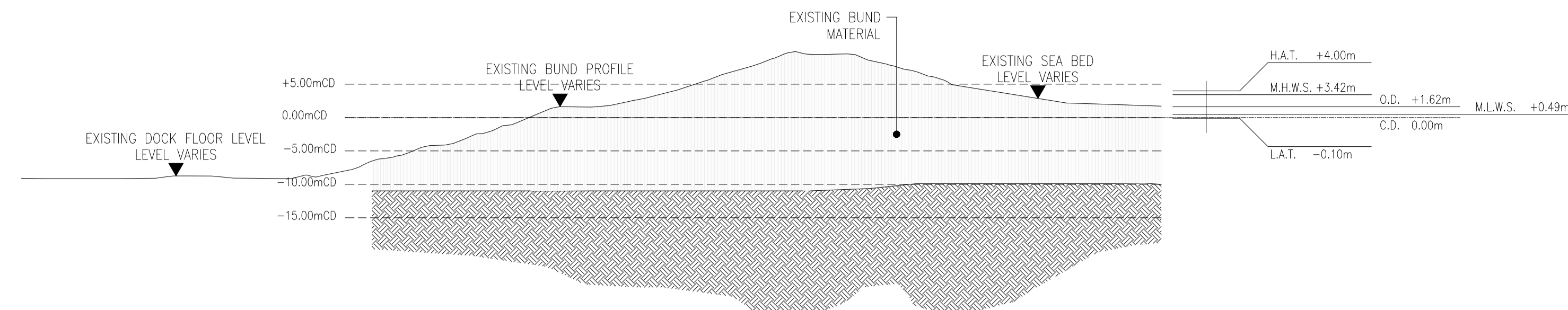
DRAWN : JM	DATE : 01/09/23	VERIFIED : A.N.	APPROVED :
SCALE : (A1) NTS		DRAWING STATUS : PRELIMINARY	

DO NOT SCALE	DRAWING No: HMY-AHN-ZZ-XX-SK-C-0004	REV : P03
--------------	--	--------------

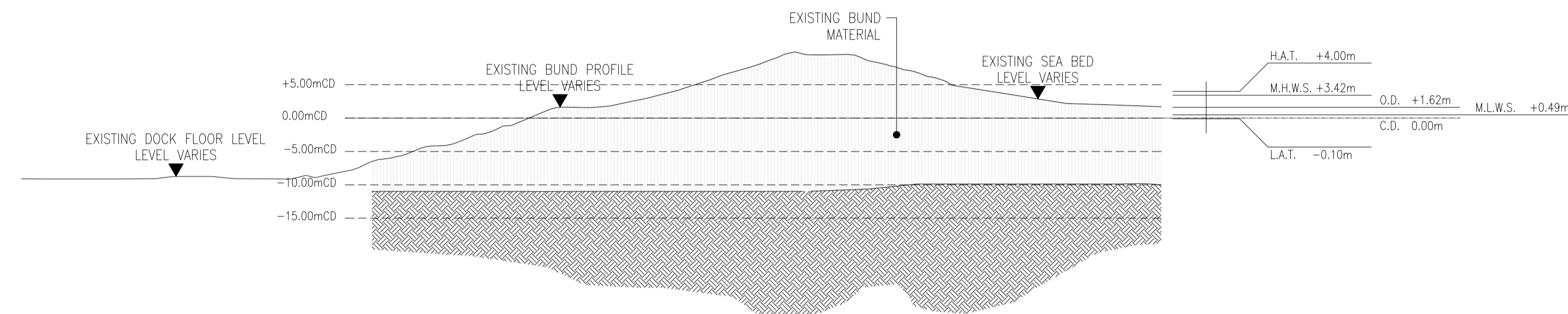
OPTION 3 - CONSTRUCT APPROXIMATELY 250m LONG QUAY WALL.

The structure will be constructed in the form of a combined wall, made of large diameter tube piles with sheet AZ piles between. The front wall will be connected to the rear wall using steel tie rods. The large tube piles will be approximately 35m long, driven to refusal specified by the designer- subject to design load requirements. Installation of tie rods above MWL will significantly extend the gap between tides for the rod installation, however it will also potentially increase the length of the piles and therefore will increase the material cost. Potentially, additional tubular piles will be installed within the cofferdam locally to increase the load capacity in the area. The basin located behind the cofferdam will be filled in using the dredged material. Dependent on load confirmation, piled foundations may be required.

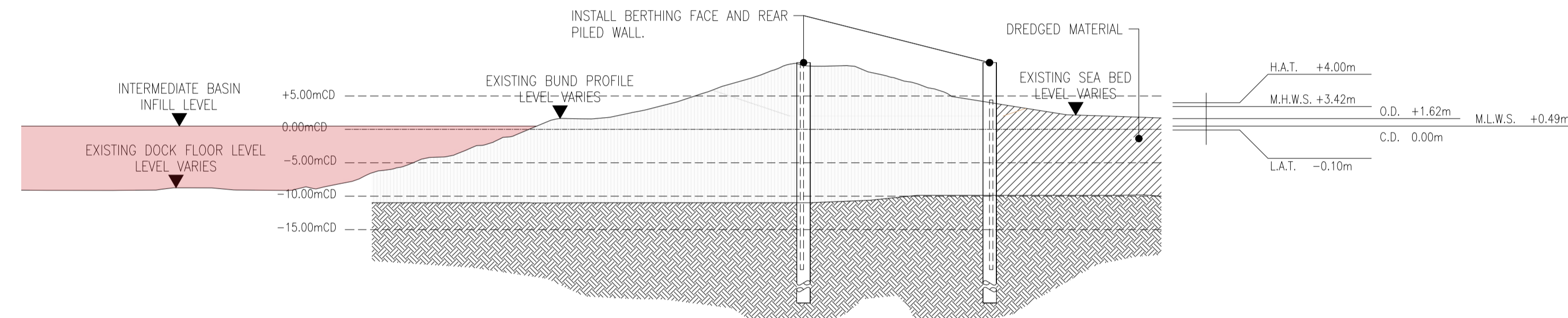
- Pros:
- Lower construction cost in comparison to longer berths.
 - Shorter construction period.
- Cons:
- Due to the berth length, only one vessel will be able to use the site at any time.



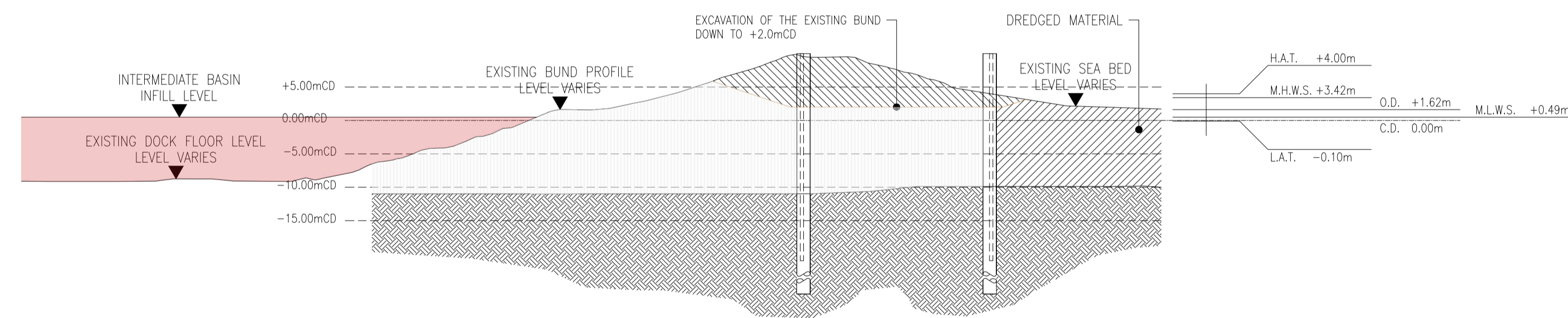
STAGE 1



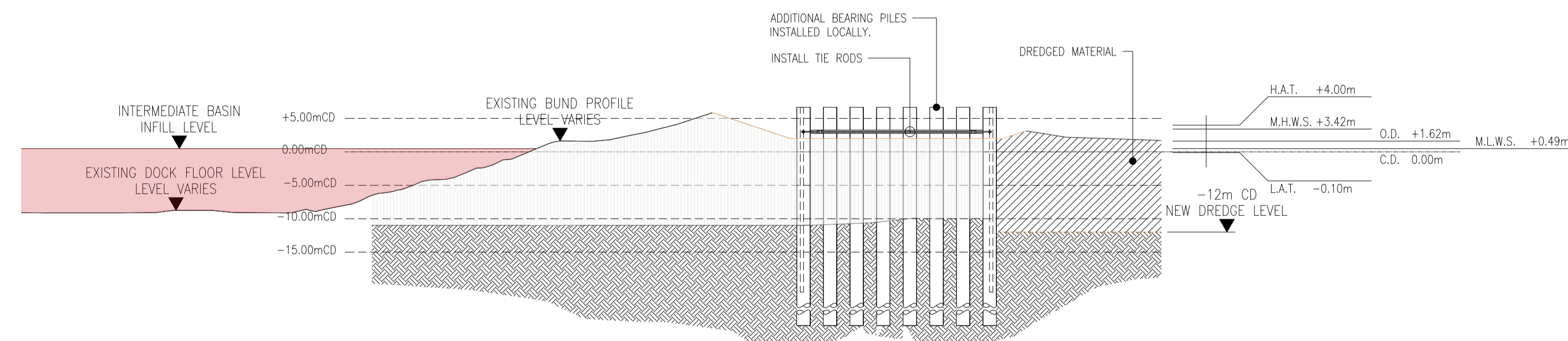
STAGE 2



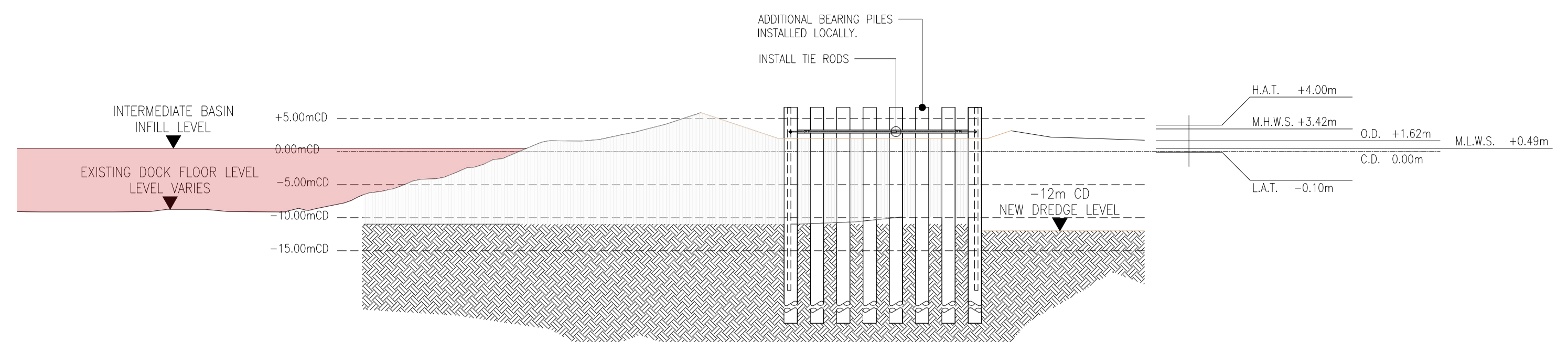
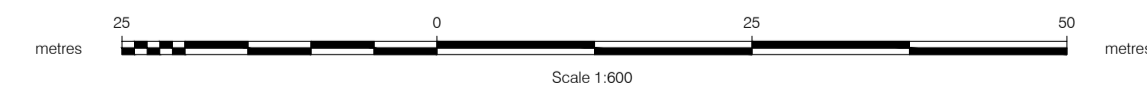
STAGE 3



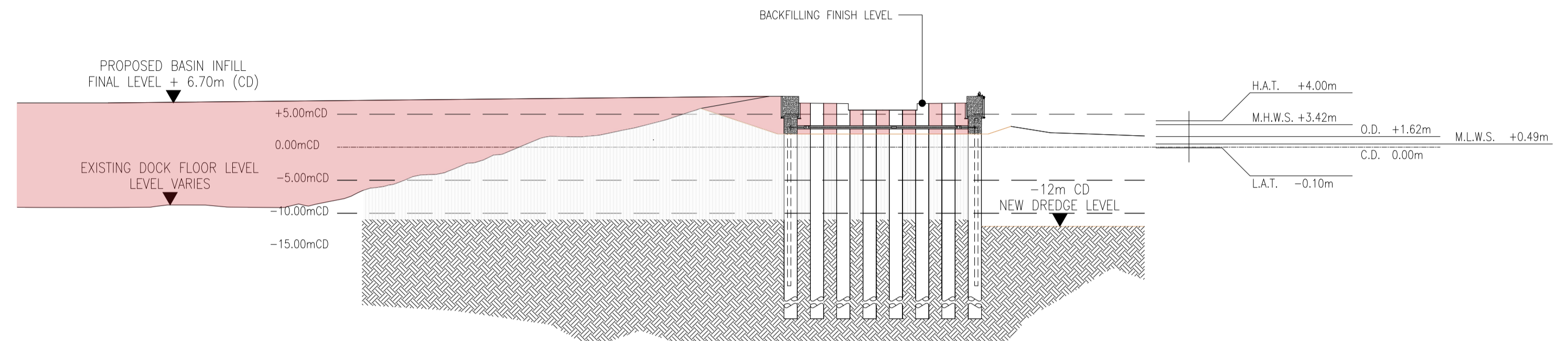
STAGE 4



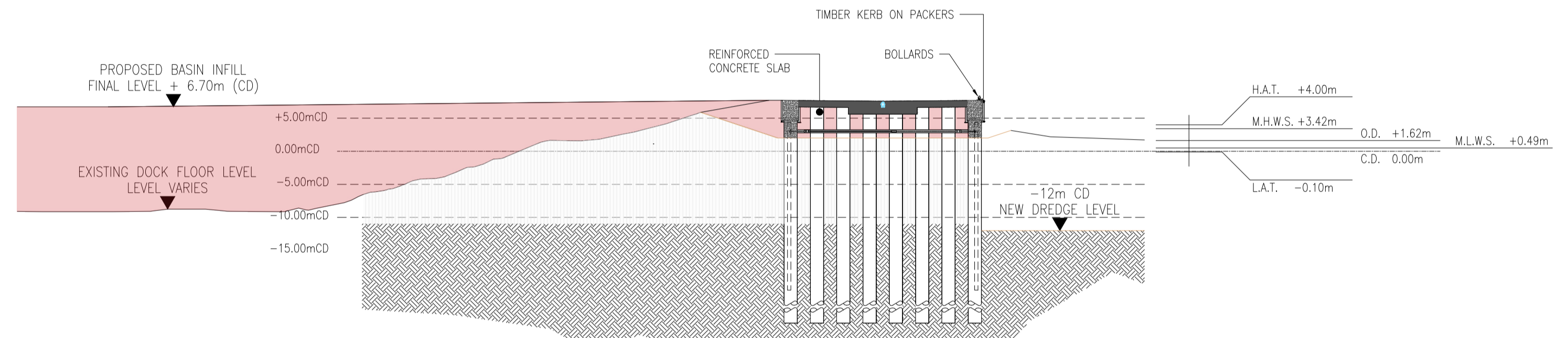
STAGE 5



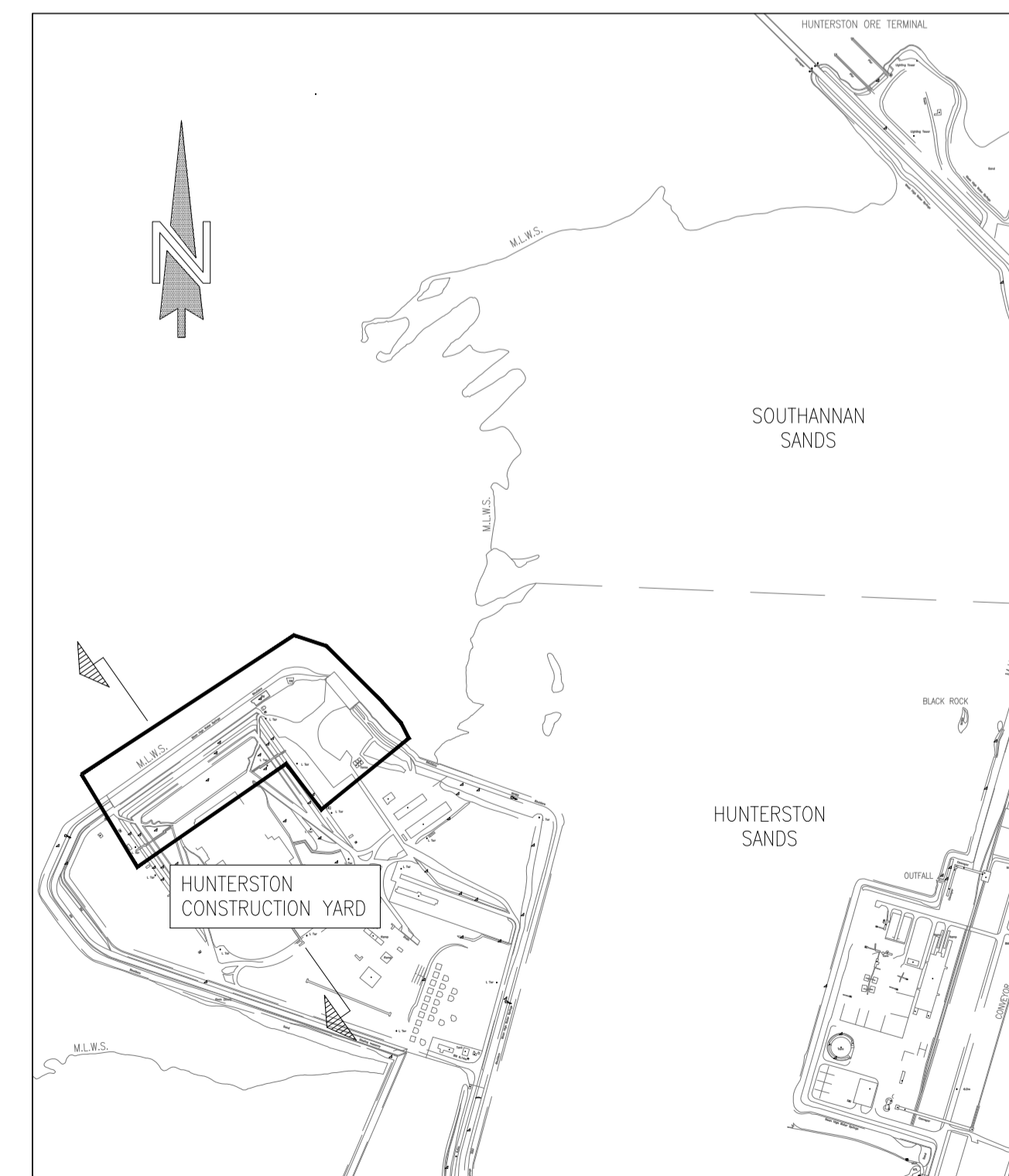
STAGE 6



STAGE 7



STAGE 8



LOCATION PLAN
1:10,000

Reproduced from Ordnance Survey Superplan Data © Crown Copyright all Rights reserved. User licence No. 100002501.

PO1	21.09.23	FIRST ISSUE	K.M.	A.N.
REV	DATE	REVISION DESCRIPTION	DRN	VER

THIS DRAWING IS COPYRIGHT. DO NOT SCALE FROM THIS DRAWING.

Arch Henderson 1919

Civil Engineers
Structural Engineers
Principal Designers
Architects
Geotechnical services
Environmental services

142 St Vincent Street, Glasgow G2 5LA
Tel: 0141 227 3060 - Fax: 0141 249 9542
www.arch-henderson.co.uk - email: glasgow@arch-henderson.co.uk

Offices in: Aberdeen, Dundee, Falkland Islands, Glasgow, Inverness, Lewick, Southampton, Storness and Thurso

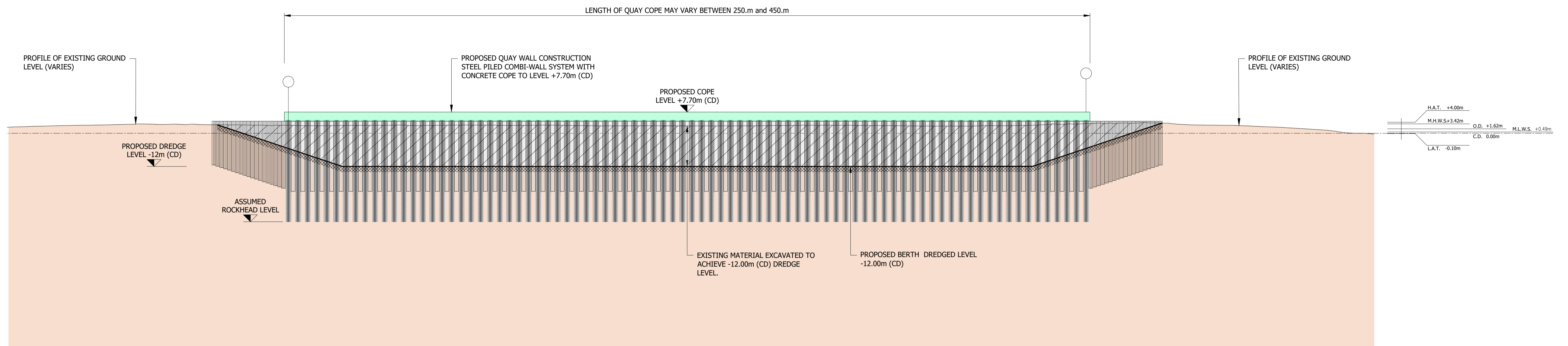
PROJECT :
CLYDEPORT OPERATIONS LTD
HUNTERSTON CONSTRUCTION YARD

TITLE :
CONSTRUCTION PHASE PROCESS
SHEET 2 of 2 - CONCEPT

DRAWN : K.M.	DATE : 21/09/23	VERIFIED : A.N.	APPROVED : A.K.
-----------------	--------------------	--------------------	--------------------

SCALE : (A1) 1:10,000, 1:1000	DRAWING STATUS : PRELIMINARY
----------------------------------	---------------------------------

DRAWING No : HMY-AHN-ZZ-XX-SK-C-0007	REV : P01
---	--------------



QUAY WALL FRONT ELEVATION SHOWING BERTHING AREA DREDGE PROFILE

SCALE 1:750 (A1)



P01	21.09.23	FIRST ISSUE	K.M.	A.N.
REV	DATE	REVISION DESCRIPTION	DRN	VER

THIS DRAWING IS COPYRIGHT © DO NOT SCALE FROM THIS DRAWING.

Arch Henderson 1919

Civil Engineers
Structural Engineers
Architects
Geotechnical services
Environmental services

142 St. Vincent Street, Glasgow G2 5LA.
Tel : 0141 227 3060 - Fax : 0141 248 9542
www.arch-henderson.co.uk - email : glasgow@arch-henderson.co.uk

Offices in : Aberdeen, Dundee, Falkland Islands, Glasgow, Inverness, Lerwick, Southampton, Stromness and Thurso

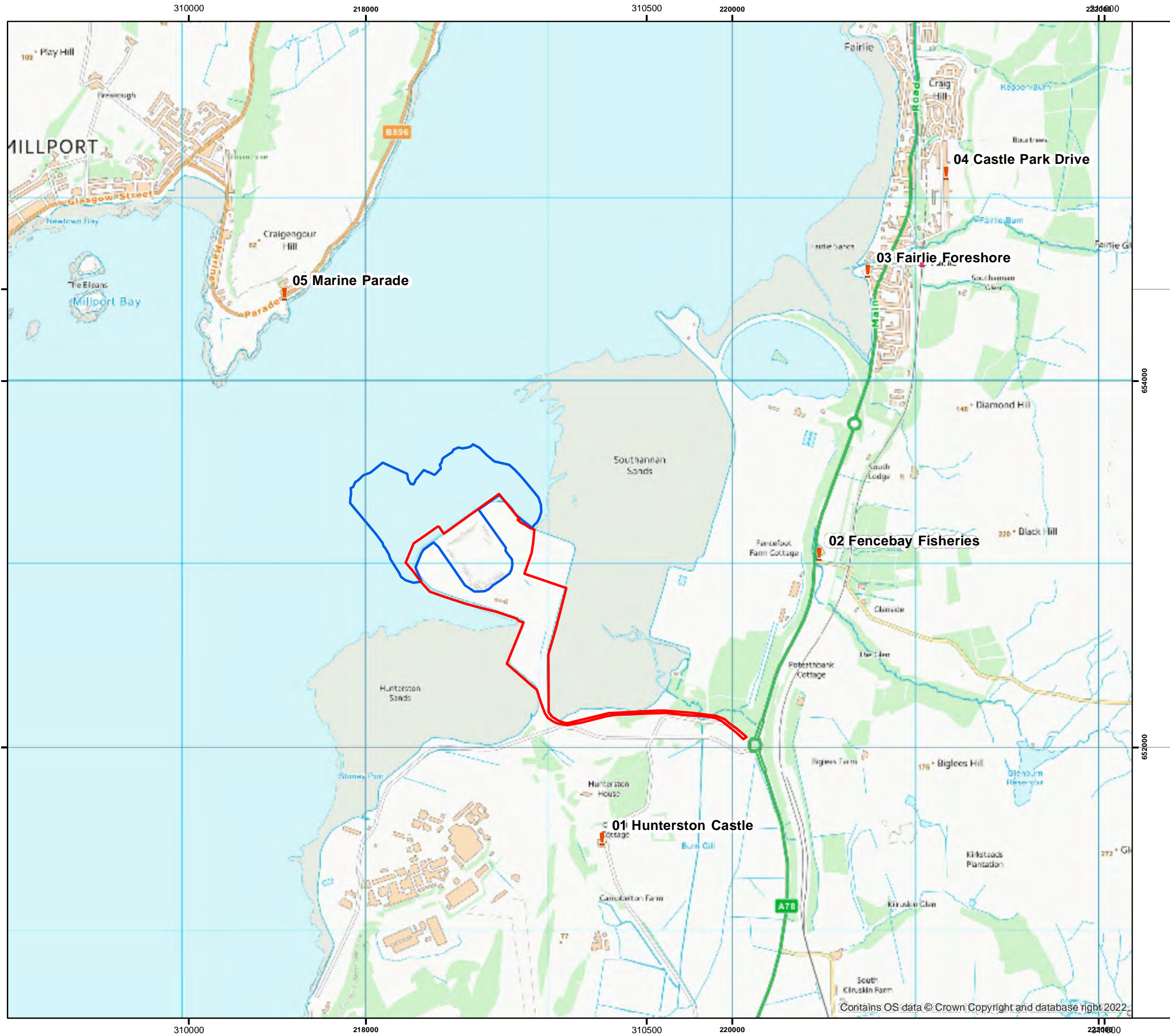
PROJECT :
**CLYDEPORT OPERATIONS LTD
HUNTERSTON CONSTRUCTION YARD**

TITLE :
**CONSTRUCTION PHASE PROCESS
INDICATIVE ELEVATION - CONCEPT**

DRAWN : K.M.	DATE : 21/09/23	VERIFIED : M.W.	APPROVED : A.K.
-----------------	--------------------	--------------------	--------------------

SCALE : (A1) 1:750	DRAWING STATUS : PRELIMINARY
-----------------------	---------------------------------

DO NOT SCALE	DRAWING No : HMY-AHN-ZZ-XX-SK-C-0008	REV : P01
--------------	--	--------------



- Legend**
- Terrestrial Planning Consent Boundary
 - Marine Consent Boundary
 - ! Noise Sensitive receptors

Do not scale this map
Client
 Arch Henderson LLP

Project
 Hunterston Construction Yard

Title
 Noise Sensitive Receptors

Status
FINAL

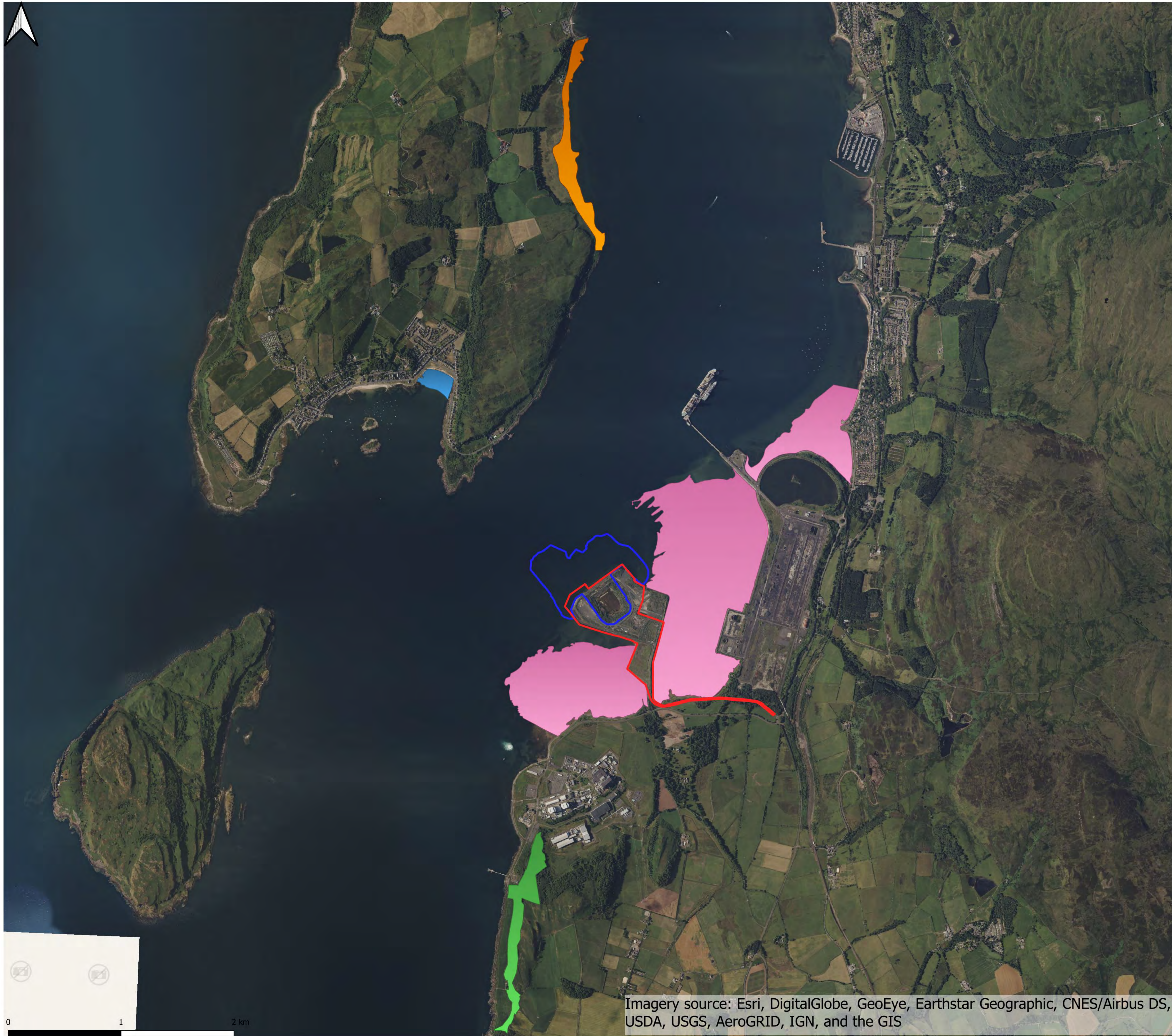
Drawing No. 176482-GIS003	Revision -	Date 21 Aug 2023
Drawn AH	Checked GD	Approved GD

Scale
 1:4,000 @A3

Rev	Date	Amendment	Initials
-	-	-	-

8 Eagle Street, Craighall Business Park, Glasgow, G4 9XA.
 T: 0141 341 5040 E: info@envirocentre.co.uk
 W: www.envirocentre.co.uk

Contains OS data © Crown Copyright and database right 2022



Imagery source: Esri, DigitalGlobe, GeoEye, Earthstar Geographic, CNES/Airbus DS, USDA, USGS, AeroGRID, IGN, and the GIS

Legend

- Terrestrial Boundary
- Marnie Boundary
- Ballochmartin Bay SSSI
- Kames Bay SSSI
- Portencross Woods SSSI
- Southannan Sands SSSI

Do not scale this map

Client
Clydeport Operations Ltd

Project
Hunterston Construction Yard

Title
SSSI map

Status Final

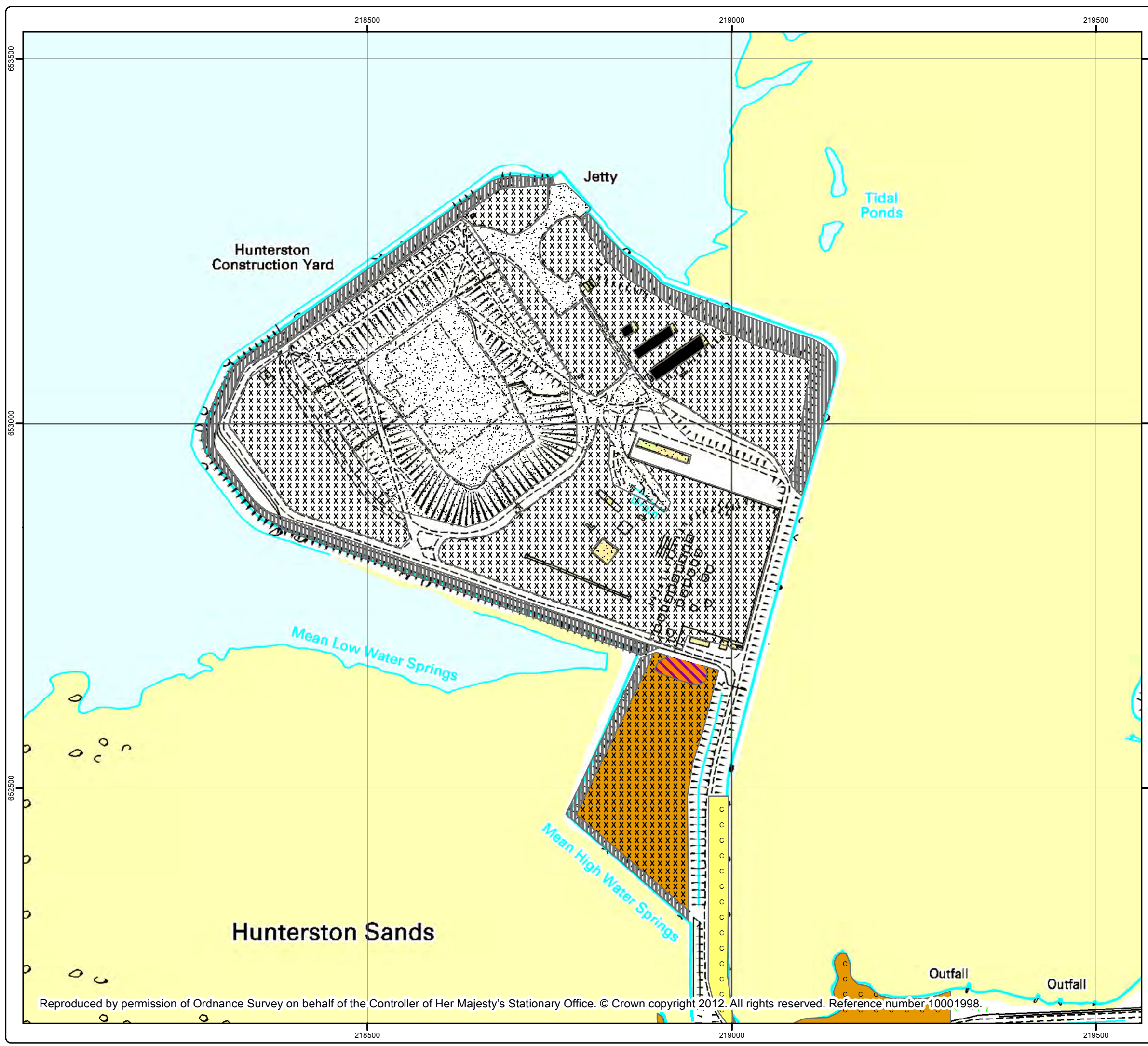
Drawing No. 176482-QGIS006	Revision --	Date 19 Sept 2023
Drawn JSH	Checked GD	Approved GD

Scale 1:16,838 @ A1

Rev	Date	Amendment	Initials
-	-	-	-





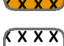






Craighall Business Park, Eagle Street, Glasgow, G4 9XA
T: 0141 341 5040 E: info@envirocentre.co.uk W: www.envirocentre.co.uk



Legend

JNCC Code

-  B4 Improved grassland
-  B5 Marsh/marsh grassland
-  D1 Coastal heathland
-  H8.4 Coastal grassland
-  H8.4/J1.3 Coastal grassland/ESP
-  J1.3 Ephemeral /short perenial
-  J3.5 Sea wall
-  J3.6 Building
-  J4 Bare ground

Do not scale this map

Client
Clydeport

Project
Hunterston Quay

Title
Phase 1 Habitat Survey

Status
FINAL

Drawing No. 161511j-004	Revision
----------------------------	----------

Scale 1:5,000	A3	Date 4 January 2013
------------------	-----------	------------------------

Drawn MN	Checked FM	Approved EC
-------------	---------------	----------------



Craighall Business Park, Eagle Street, Glasgow, G4 9XA
Tel: 0141 341 5040
Fax: 0141 341 5045

Reproduced by permission of Ordnance Survey on behalf of the Controller of Her Majesty's Stationary Office. © Crown copyright 2012. All rights reserved. Reference number 10001998.



Legend

- Curlew Roost Site
- Oystercatcher Roost Site
- Redshank Roost Site
- Wader Roost (Several Species)

Do not scale this map

Client
Clydeport Operations Ltd

Project
Hunterston Construction Yard

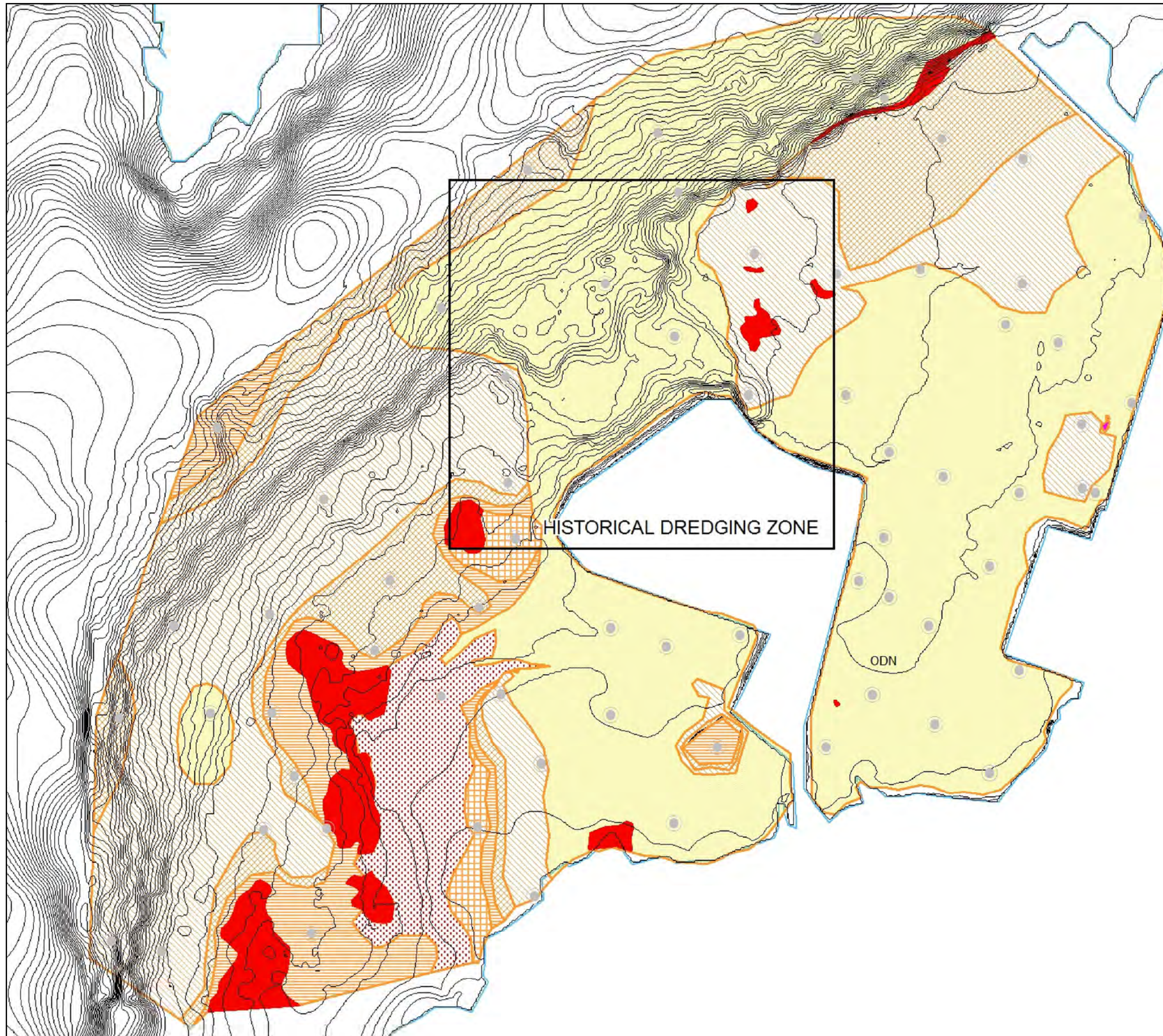
Title
High Tide Wader Roost Sites

Status
Final








Drawing No. 176482-QGIS005	Revision 1	Date 23 Aug 2023
Drawn JS	Checked GD	Approved GD

Scale
1:6,500 @ A1

Rev	Date	Amendment	Initials
-	-	-	-



Legend

-  <1% Gravel
-  1-5% Gravel
-  5-10% Gravel
-  10-25% Gravel
-  25-50% Gravel
-  Boulder field in gravel/sand
-  Boulders or dense gravel (lag deposit)

Do not scale this map

Client
Clydeport

Project
Hunterston Quay

Title
Gravel Deposits

Status
FINAL

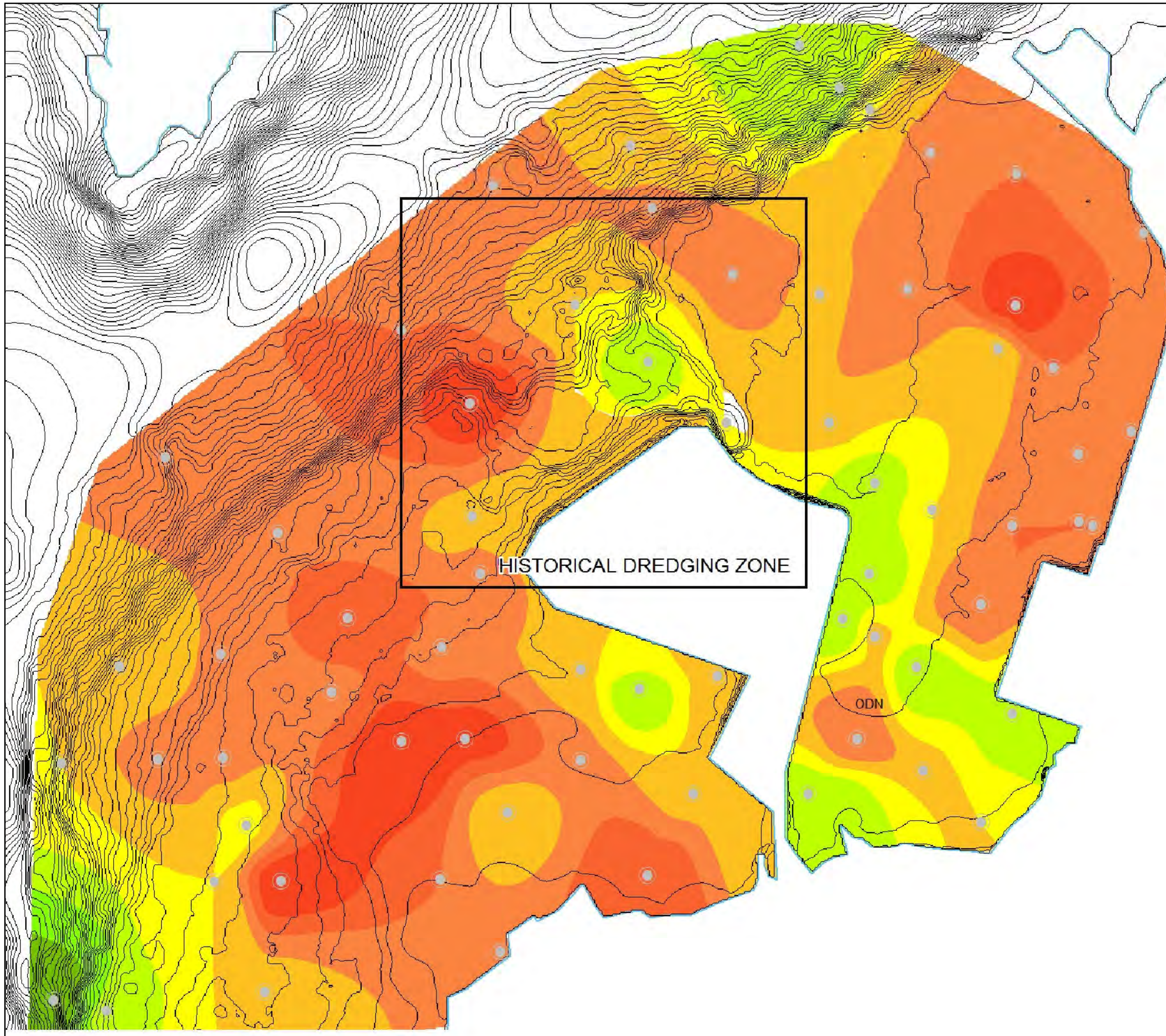
Drawing No. 161511J-007	Revision
----------------------------	----------

Scale NTS	A3	Date 3 January 2013
---------------------	-----------	------------------------

Drawn JS	Checked MN	Approved EC
-------------	---------------	----------------



Craighall Business
Park, Eagle Street,
Glasgow, G4 9XA
Tel: 0141 341 5040
Fax: 0141 341 5045



Legend

DOMINANT SAND MODE
Secondary modes shown as text
PHI UNITS

- 1.5 to 1.75 Medium sand bedload transport
- 1.75 to 2.0 Medium sand bedload transport
- 2.0 to 2.25 Medium sand bedload transport
- 2.25 to 2.5 Sand most easily set in motion by currents
- 2.5 to 2.75 Fine sand fallout zone
- 2.75 to 3.0 Fine sand fallout zone
- 3.0 to 3.25 Very fine sand fallout zone
- 3.25 to 3.5 Very fine sand fallout zone

Do not scale this map

Client
Clydeport

Project
Hunterston Quay

Title
Sand Deposits

Status
FINAL

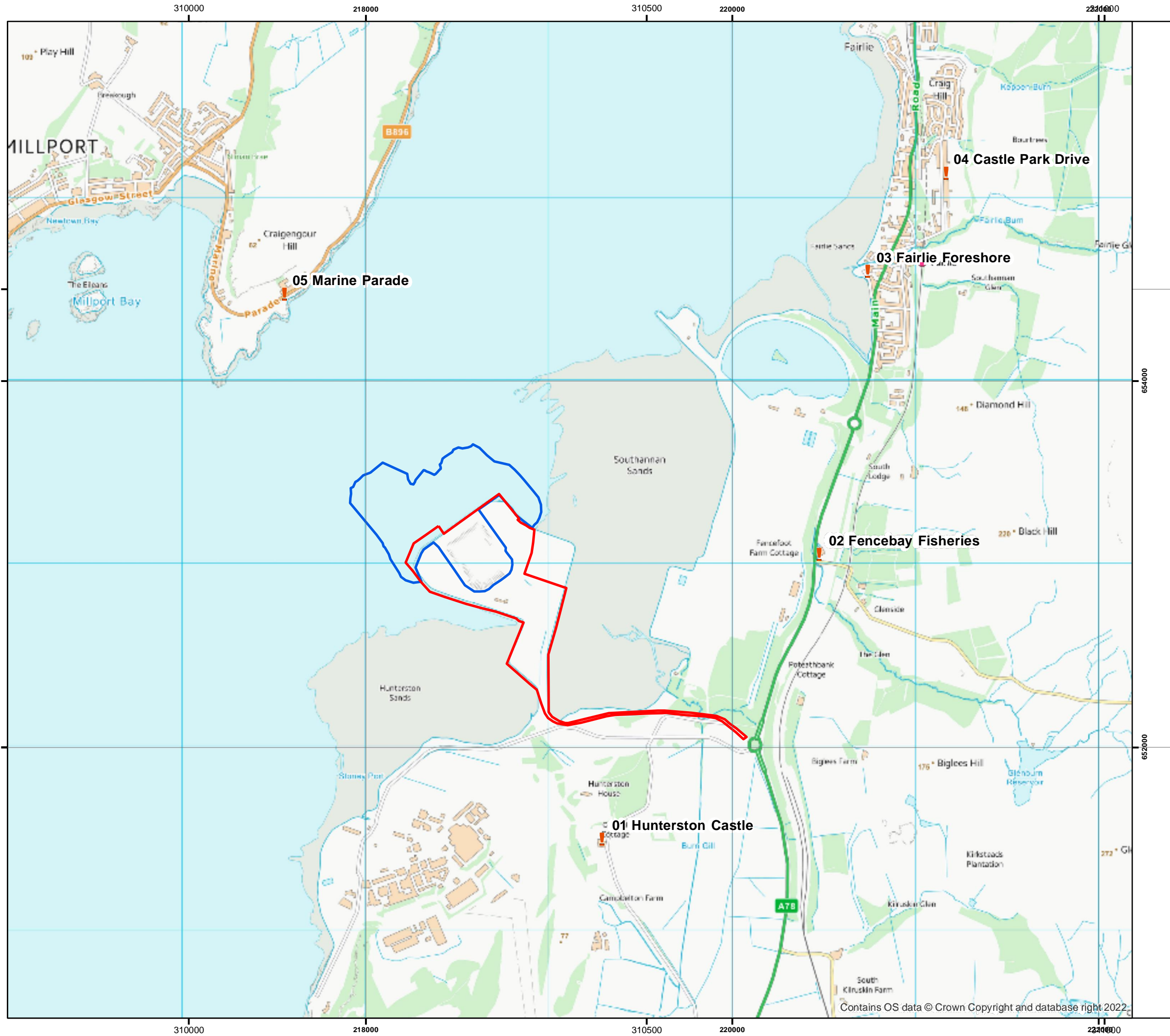
Drawing No. 161511J-008	Revision
----------------------------	----------

Scale NTS	A3	Date 3 January 2013
--------------	-----------	------------------------

Drawn JS	Checked MN	Approved EC
-------------	---------------	----------------



Craighall Business Park, Eagle Street, Glasgow, G4 9XA
Tel: 0141 341 5040
Fax: 0141 341 5045



Legend

- ▭ Terrestrial Planning Consent Boundary
- ▭ Marine Consent Boundary
- ! Noise Sensitive receptors

Do not scale this map
Client
 Arch Henderson LLP

Project
 Hunterston Construction Yard

Title
 Noise Sensitive Receptors

Status
FINAL

Drawing No. 176482-GIS003	Revision -	Date 21 Aug 2023
Drawn AH	Checked GD	Approved GD

Scale
 1:4,000 @A3

Rev	Date	Amendment	Initials
-	-	-	-

8 Eagle Street, Craighall Business Park, Glasgow, G4 9XA.
 T: 0141 341 5040 E: info@envirocentre.co.uk
 W: www.envirocentre.co.uk

Contains OS data © Crown Copyright and database right 2022.