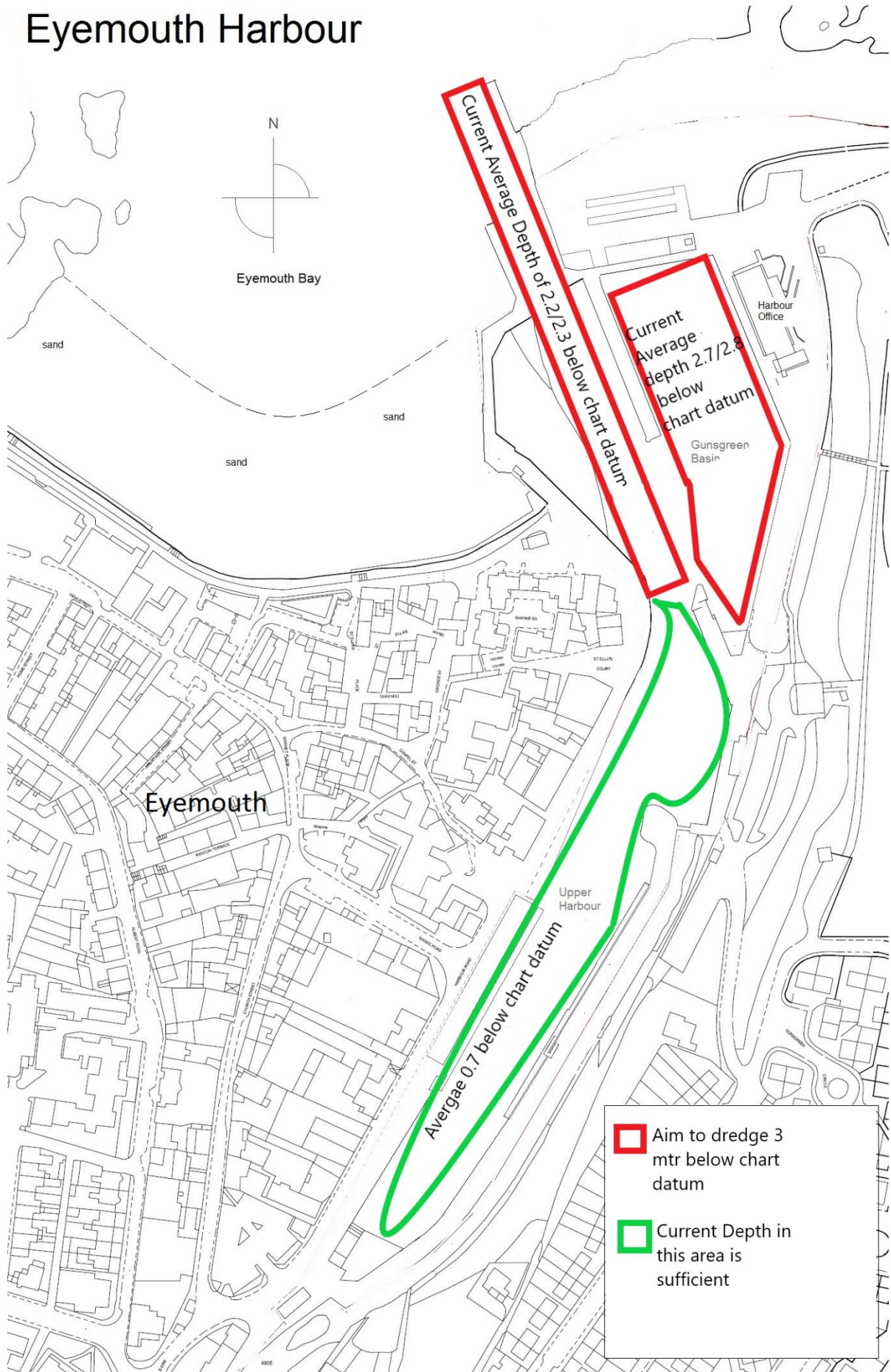


Dredging Area for 2022 Dredging License

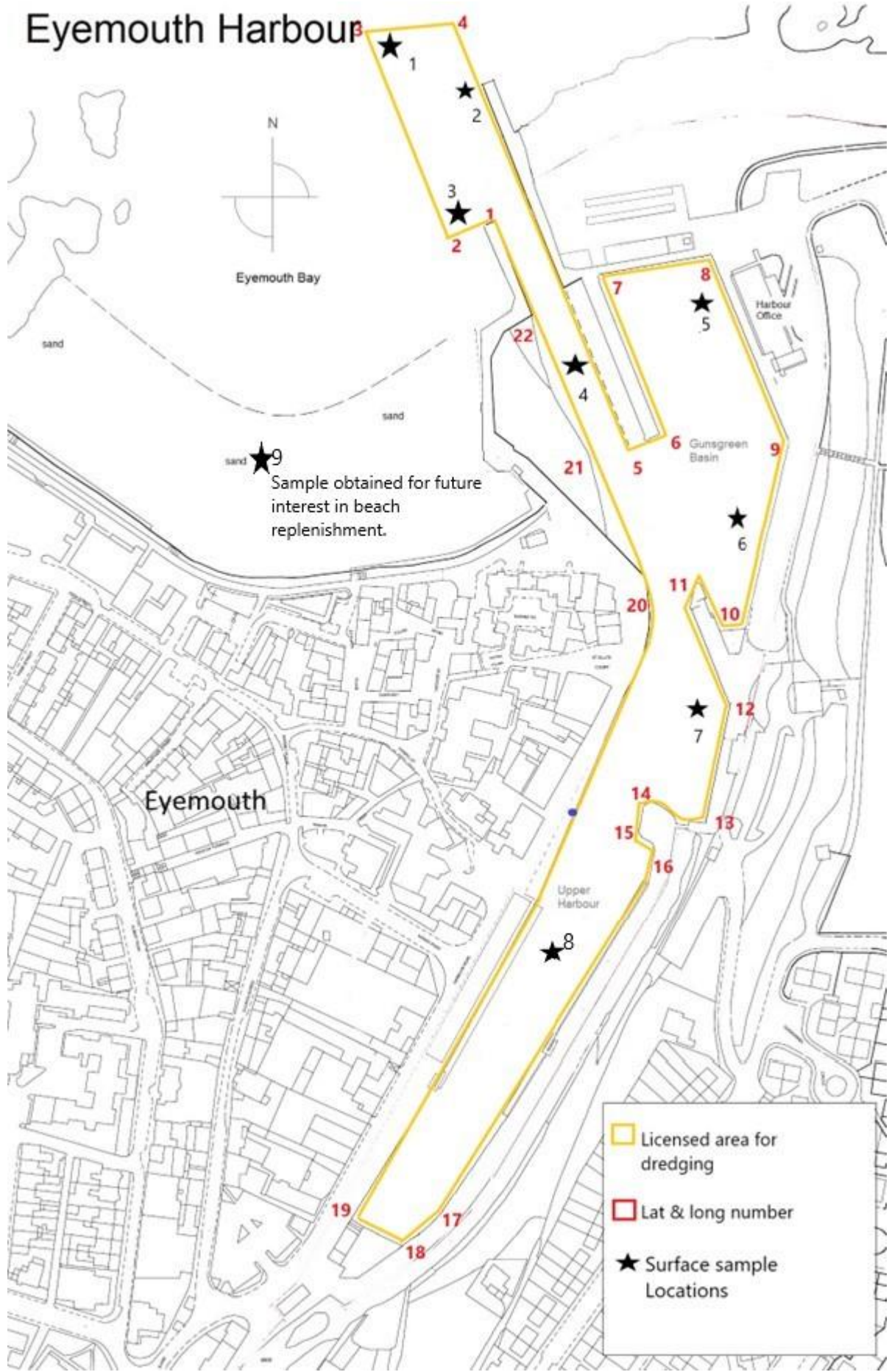
Extended Dredging limit/area Lat and long

Number	Lat	Long
1	55°52.461N	002°05.290W
2	55°52.460N	002°05.300W
3	55°52.530N	002°05.360W
4	55°52.540N	002°05.300W
5	55°52.410N	002°05.210W
6	55°52.420N	002°05.200W
7	55°52.450N	002°05.210W
8	55°52.455N	002°05.180W
9	55°52.410N	002°05.151W
10	55°52.371N	002°05.180W
11	55°52.380N	002°05.190W
12	55°52.345N	002°05.170W
13	55°52.320N	002°05.190W
14	55°52.322N	002°05.210W
15	55°52.311N	002°05.220W
16	55°52.309N	002°05.200W
17	55°52.230N	002°05.280W
18	55°52.210N	002°05.310W
19	55°52.215N	002°05.359W
20	55°52.371N	002°05.200W
21	55°52.415N	002°05.225W
22	55°52.455N	002°05.260W
	Surface Sample locations	
1	55°52.530N	002°05.351W
2	55°52.495N	002°05.290W
3	55°52.460N	002°05.295W
4	55°52.439N	002°05.231W
5	55°52.448N	002°05.180W
6	55°52.489N	002°05.200W
7	55°52.353N	002°05.180W
8	55°52.290N	002°05.250W
	Beach Surface Sample	
9	55°52.423N	002°05.250W

# Eyemouth Harbour



# Eyemouth Harbour



Eyemouth Bay




Sample obtained for future interest in beach replenishment.

Eyemouth

Upper Harbour

Harbour Office

Gunsreen Basin

-  Licensed area for dredging
-  Lat & long number
-  Surface sample Locations



