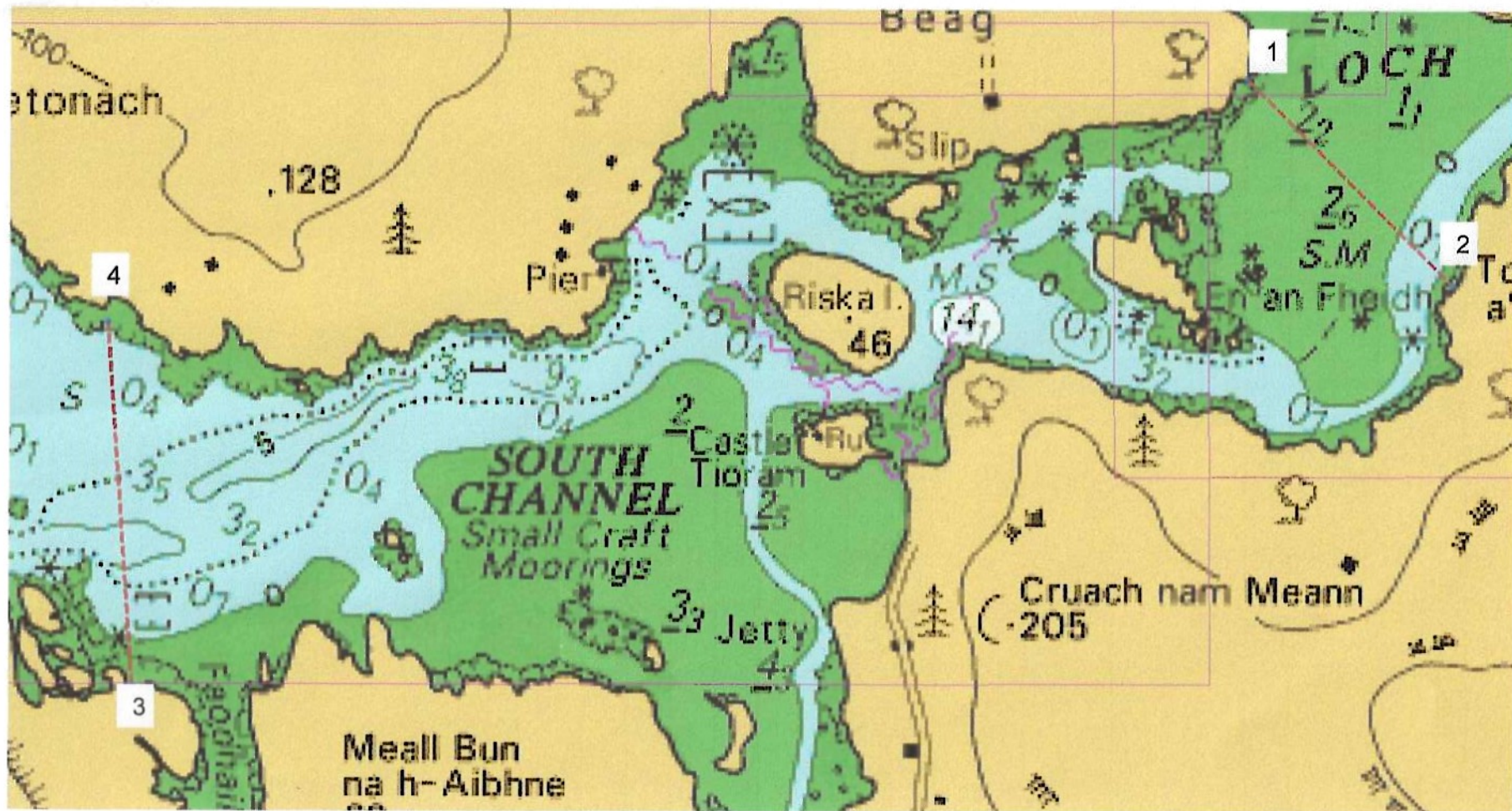


Loch Moidart Mooring Association



In order to be consistent with our seabed agreement with Crown Estate Scotland the moorings area is bounded by two transects crossing the channel as shown in the above chart extract. The coordinates of the end points of the two transects are as follows:

Western Transect

56°46.694N, -5°51.642W (3)

56°47.246N, -5°51.700W (4)

Eastern Transect

56°47.611N, -5°48.556W (1)

56°47.293N, -5°47.989W (2)