

BERWICK BANK WIND FARM OFFSHORE ENVIRONMENTAL IMPACT ASSESSMENT

APPENDIX 10.1, ANNEX E: NOISE CONTOURS FOR PILING AT A SINGLE LOCATION

Document Status					
Version	Purpose of Document	Authored by	Reviewed by	Approved by	Review Date
FINAL	Final	RPS	RPS	RPS	September 2022

Approval for Issue					
Ross Hodson		[Redacted]		29 September 2022	

Prepared by:	RPS
Prepared for:	SSE Renewables
Checked by:	Kerr MacKinnon (SSER)
Accepted by:	Douglas Watson (SSER)
Approved by:	Ross Hodson (SSER)

© Copyright RPS Group Plc. All rights reserved.

The report has been prepared for the exclusive use of our client.

The report has been compiled using the resources agreed with the client and in accordance with the scope of work agreed with the client. No liability is accepted by RPS for any use of this report, other than the purpose for which it was prepared. The report does not account for any changes relating to the subject matter of the report, or any legislative or regulatory changes that have occurred since the report was produced and that may affect the report. RPS does not accept any responsibility or liability for loss whatsoever to any third party caused by, related to or arising out of any use or reliance on the report.

RPS accepts no responsibility for any documents or information supplied to RPS by others and no legal liability arising from the use by others of opinions or data contained in this report. It is expressly stated that no independent verification of any documents or information supplied by others has been made.

RPS has used reasonable skill, care and diligence in compiling this report and no warranty is provided as to the report's accuracy.

CONTENTS

FIGURES

Figure 1:	Unweighted Single Pulse SEL Contours due to Concurrent Piling at Wind Turbine 1 with 4,000 kJ Hammer Energy (dB re $\mu 1$ Pa ² s) Using 4% Reducing to 0.5% Conversion Factor.....	1
Figure 2:	Unweighted Single Pulse SEL Contours due to Concurrent Piling at Wind Turbine 40 with 4,000 kJ Hammer Energy (dB re $\mu 1$ Pa ² s) Using 4% Reducing to 0.5% Conversion Factor.....	1
Figure 3:	Unweighted Single Pulse SEL Contours due to Concurrent Piling at the Central Wind Turbine with 4,000 kJ Hammer Energy (dB re $\mu 1$ Pa ² s) Using 4% Reducing to 0.5% Conversion Factor	2
Figure 4:	Unweighted Single Pulse SEL Contours due to Concurrent Piling at Wind Turbine 135 with 4,000 kJ Hammer Energy (dB re $\mu 1$ Pa ² s) Using 4% Reducing to 0.5% Conversion Factor.....	2
Figure 5:	Unweighted Single Pulse SEL Contours due to Concurrent Piling at Wind Turbine 179 with 4,000 kJ Hammer Energy (dB re $\mu 1$ Pa ² s) Using 4% Reducing to 0.5% Conversion Factor.....	3

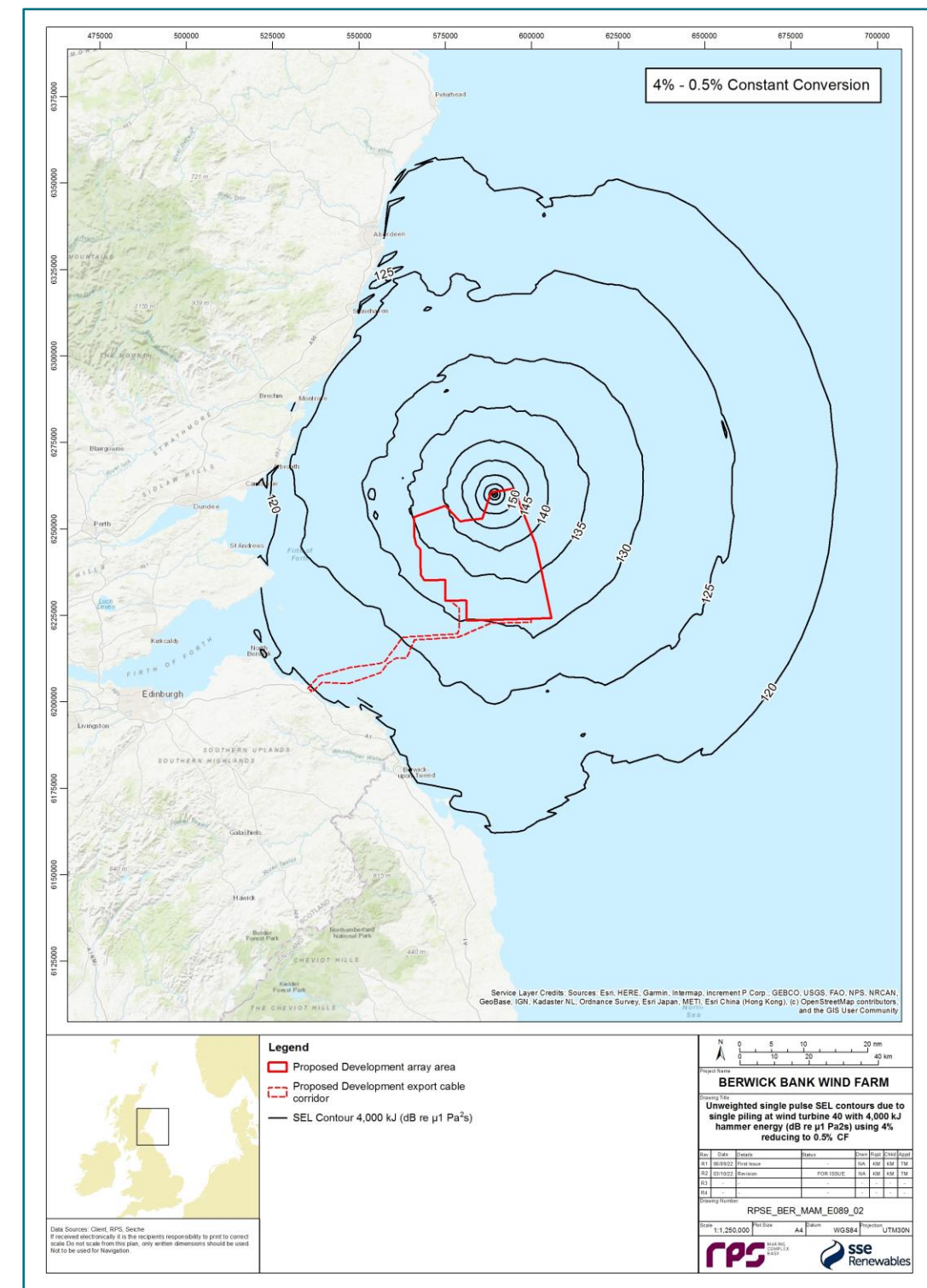
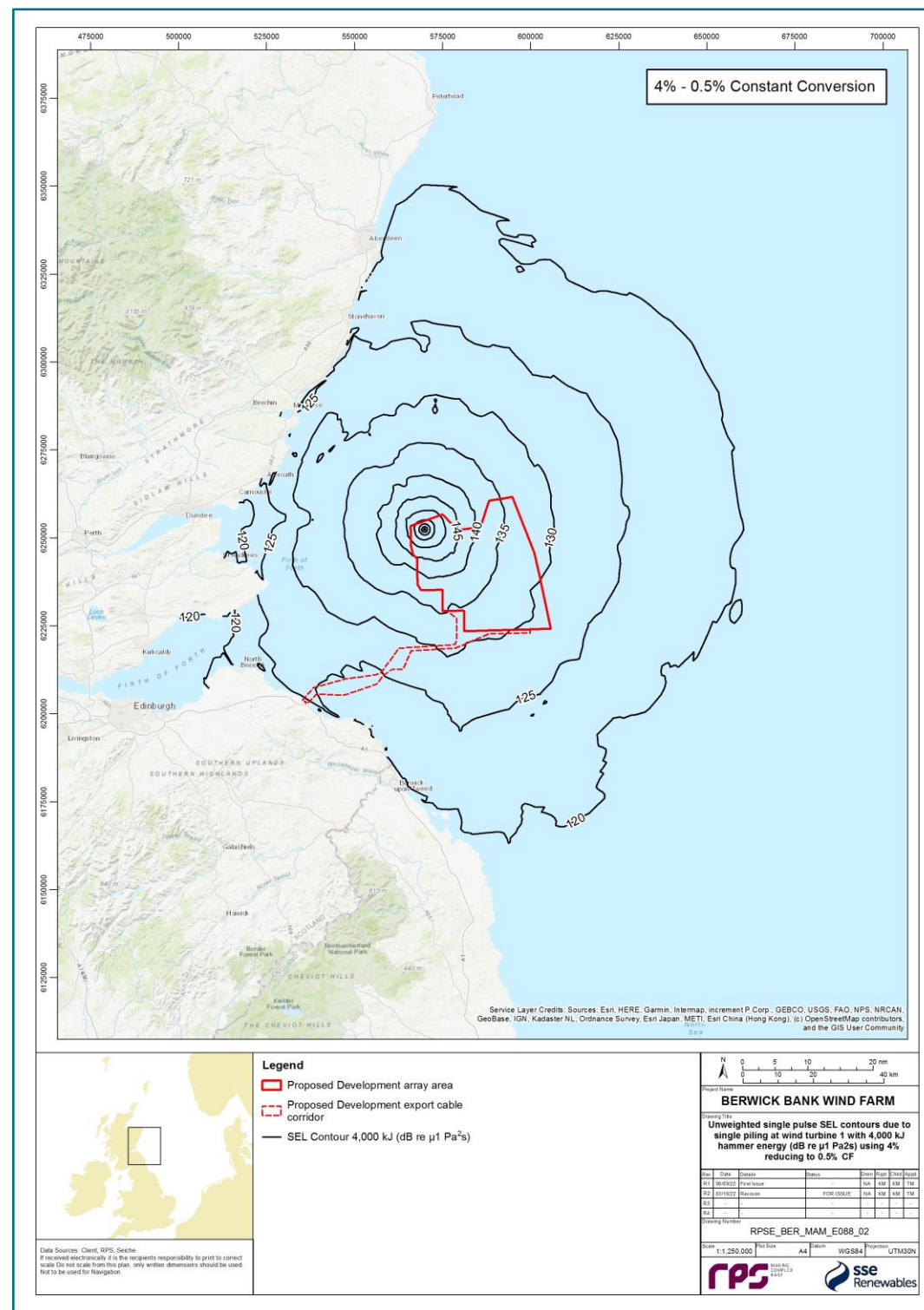


Figure 1: Unweighted Single Pulse SEL Contours due to Concurrent Piling at Wind Turbine 1 with 4,000 kJ Hammer Energy (dB re $\mu 1 \text{ Pa}^2\text{s}$) Using 4% Reducing to 0.5% Conversion Factor

Figure 2: Unweighted Single Pulse SEL Contours due to Concurrent Piling at Wind Turbine 40 with 4,000 kJ Hammer Energy (dB re $\mu 1 \text{ Pa}^2\text{s}$) Using 4% Reducing to 0.5% Conversion Factor

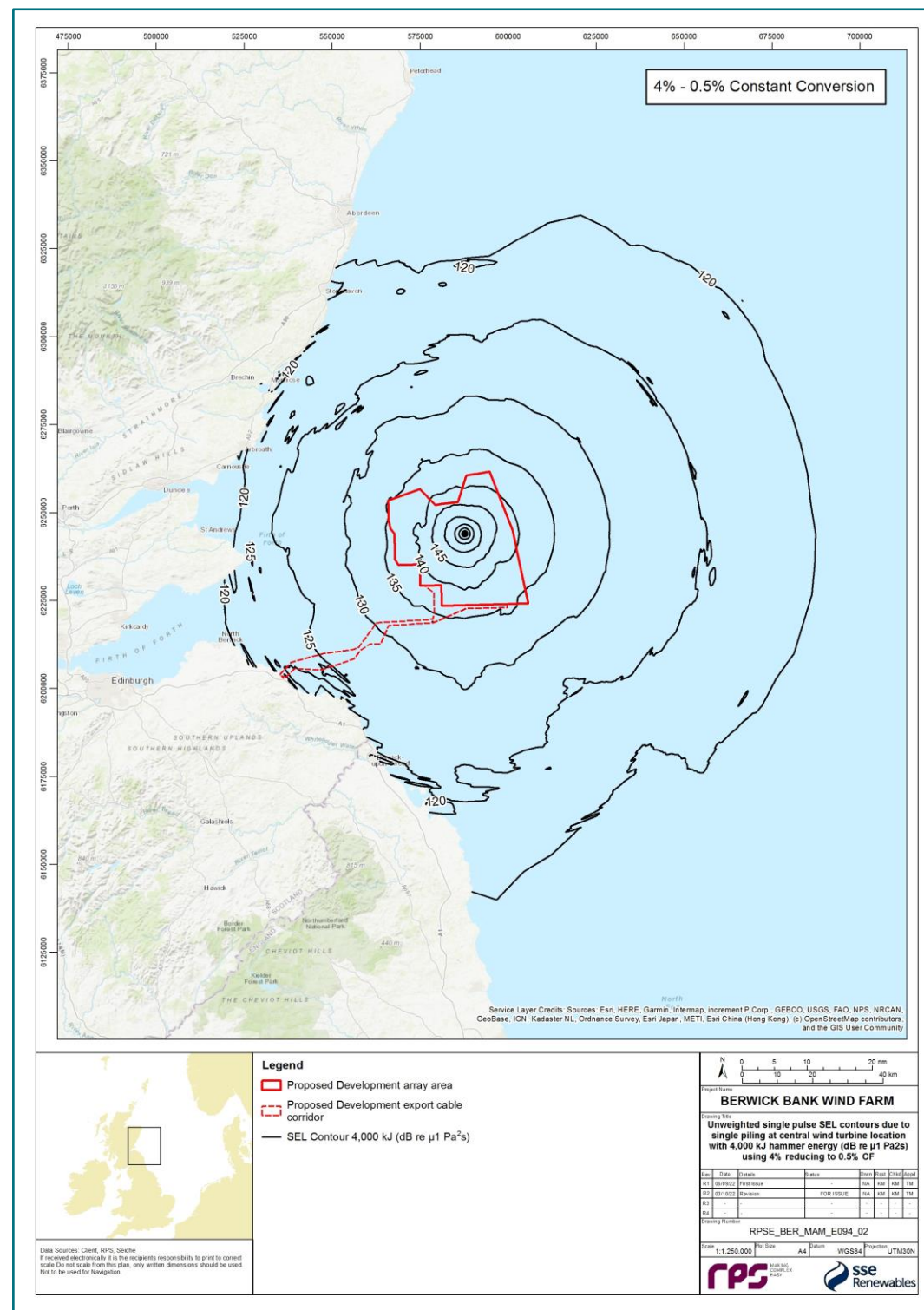


Figure 3: Unweighted Single Pulse SEL Contours due to Concurrent Piling at the Central Wind Turbine with 4,000 kJ Hammer Energy (dB re $\mu 1 \text{ Pa}^2\text{s}$) Using 4% Reducing to 0.5% Conversion Factor

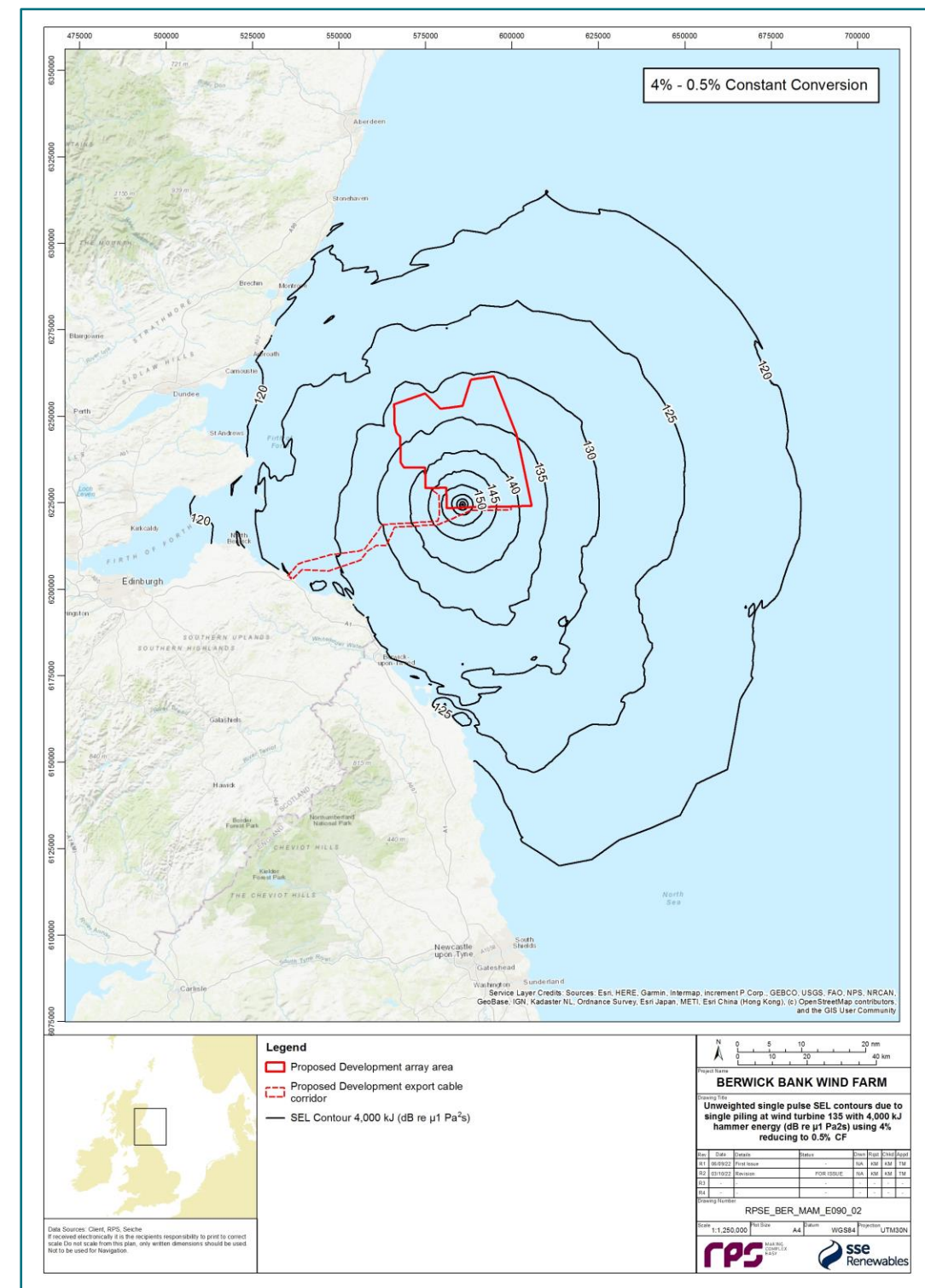


Figure 4: Unweighted Single Pulse SEL Contours due to Concurrent Piling at Wind Turbine 135 with 4,000 kJ Hammer Energy (dB re $\mu 1 \text{ Pa}^2\text{s}$) Using 4% Reducing to 0.5% Conversion Factor

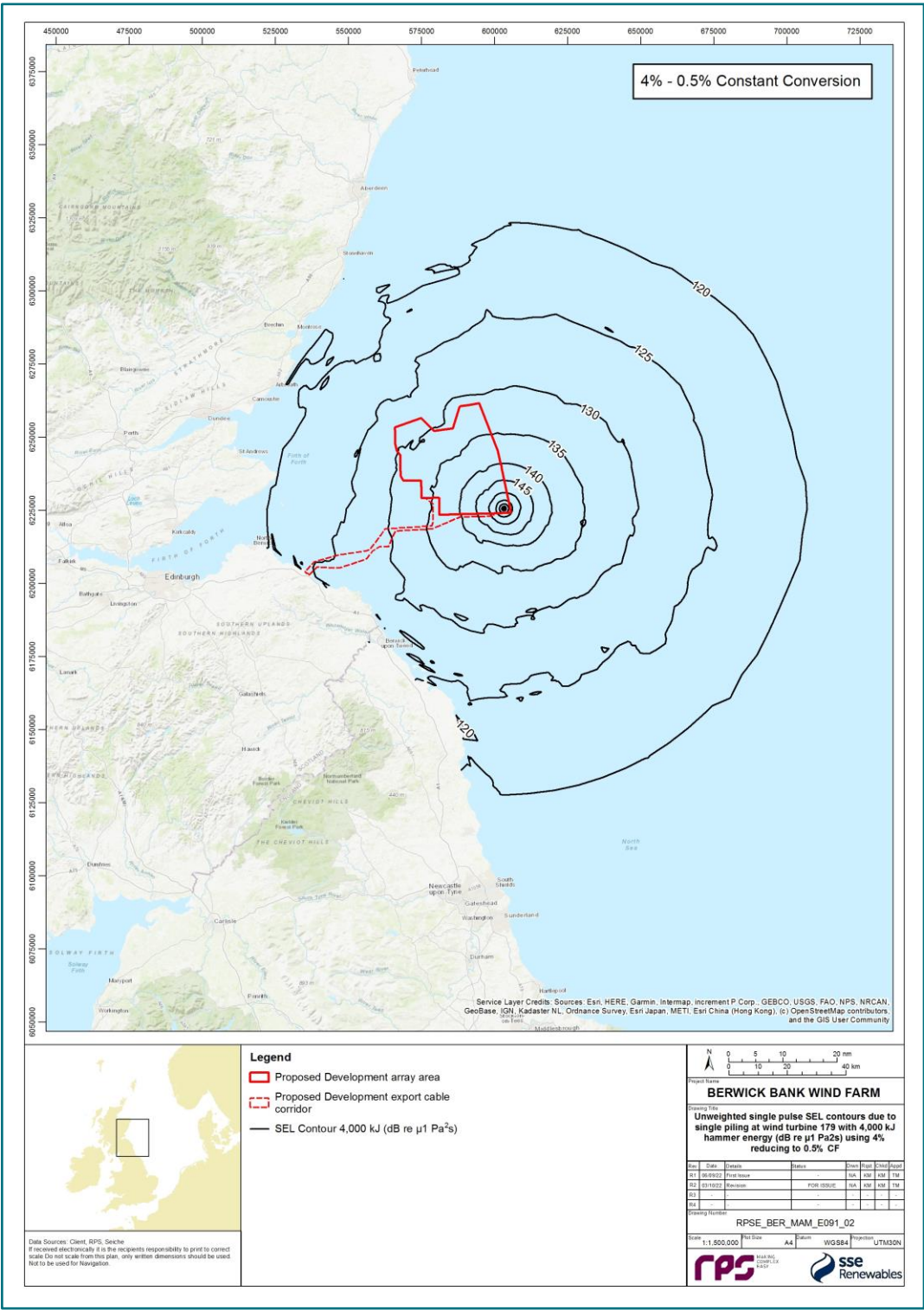


Figure 5: Unweighted Single Pulse SEL Contours due to Concurrent Piling at Wind Turbine 179 with 4,000 kJ Hammer Energy (dB re $\mu 1 \text{ Pa}^2 \text{ s}$) Using 4% Reducing to 0.5% Conversion Factor

