

COPYRIGHT RAMBOLL UK LIMITED. ALL RIGHTS RESERVED. THIS DOCUMENT IS ISSUED FOR THE PARTY WHO COMMISSIONED IT AND FOR THE SPECIFIC PURPOSES CONNECTED WITH THE PROJECT ONLY. IT SHOULD NOT BE RELIED UPON BY ANY OTHER PARTY OR USED FOR ANY OTHER PURPOSE. RAMBOLL ACCEPTS NO RESPONSIBILITY OR LIABILITY WHICH MAY ARISE FROM RELIANCE OR USE OF THIS DOCUMENT OR THE DATA CONTAINED HEREIN BY ANY OTHER PARTY OR FOR ANY OTHER PURPOSE.

- Notes
- DO NOT SCALE FROM THIS DRAWING.
  - THIS DRAWING IS TO BE READ IN CONJUNCTION WITH ALL RELEVANT ARCHITECTS AND ENGINEERS DRAWINGS AND SPECIFICATIONS.
  - ALL DIMENSIONS ARE IN MILLIMETRES U.N.O.
  - ALL CO-ORDINATES ARE IN METERS U.N.O.
  - ALL LEVELS ARE IN METRES ABOVE CHART DATUM U.N.O.
  - FOR THE RELATIONSHIP BETWEEN THE CHART DATUM AND ORDNANCE DATUM REFER TO THE DIAGRAM BELOW:
- 

**TIDAL LEVELS**

TIDAL LEVEL DESCRIPTION	ABBREVIATION	LEVEL
HIGHEST ASTRONOMICAL TIDE	HAT	+4.50m C.D.
MEAN HIGH WATER SPRINGS	MHWS	+4.00m C.D.
MEAN HIGH WATER NEAPS	MHWN	+2.90m C.D.
MEAN SEA LEVEL	MSL	+2.40m C.D.
MEAN LOW WATER NEAPS	MLWN	+1.80m C.D.
MEAN LOW WATER SPRINGS	MLWS	+0.70m C.D.
LOWEST ASTRONOMICAL TIDE	LAT	+0.00m C.D.

- PLAN LEGEND**
- BOUNDARY OF PROPOSED GROUND
  - INVESTIGATION WORKS

- EXPLORATORY HOLE LEGEND**
- MARINE CABLE PERCUSSION BOREHOLE WITH ROTARY CONTINUATION
  - LANDSIDE CABLE PERCUSSION BOREHOLE WITH ROTARY CONTINUATION
  - LANDSIDE CABLE PERCUSSION BOREHOLE WITH ROTARY CONTINUATION. LOCATIONS ARE SUBJECT TO CONFIRMED ACCESS DURING CONTRACTOR SITE WALKOVER
  - LANDSIDE CABLE PERCUSSION BOREHOLE LOCATION

- GEOPHYSICAL SURVEY LEGEND**
- BATHYMETRY SURVEY CONTOUR INFORMATION (COLOURED LINES) TO INFER BED LEVEL AT SITE.
  - BATHYMETRY SURVEY CONTOUR INFORMATION (WHITE LINES) TO INFER ROCK LEVEL AT SITE.

NOTE: Bathymetry data has been used to position Marine Investigation borehole locations to provide a minimum draft of >1.0m for Jack up barge to manoeuvre onto position.

P04	FOR INFORMATION	23/08/2023	DH	EL
P03	FOR INFORMATION	25/07/2023	RA	EL
P02	FOR INFORMATION	10/03/2023	SH	EL
P01	FOR INFORMATION	16/02/2023	RA	EL

Rev	Description	Date	By	App
			Chk	

**PRELIMINARY**

**RAMBOLL**

tel 023 8081 7500 southampton@ramboll.co.uk www.ramboll.co.uk

**EXPLORATORY HOLE LOCATION PLAN**

Project No:	Scale (B1):	Drawn:	Date:
1620010012	1:1000	DH	Aug.23
Drawing No:	Rev:		
RAM-XX-XX-DR-CE-0001A	P04		

**SAFETY, HEALTH AND ENVIRONMENTAL INFORMATION**

NOTES BELOW ARE ADDITIONAL TO HAZARDS/RISKS NORMALLY ASSOCIATED WITH THIS TYPE OF WORK. FOR DETAILS REFER TO CDM RISK REGISTER.

**CONSTRUCTION (INCLUDING DEMOLITION AND REMOVAL OF EXISTING COMPONENTS)**

- BURIED SERVICES.
- WORKING OVER WATER
- WORKING AT HEIGHT
- HIGH WINDS, COASTAL WEATHER
- POTENTIAL CONTAMINATED ARISINGS
- UXO - PRIMARILY ASSESSED AS LOW WITHIN GROUND INVESTIGATION SPECIFICATION DOCUMENT. CONTRACTOR TO CONFIRM THIS CLASSIFICATION AND MITIGATE RISK ACCORDINGLY.

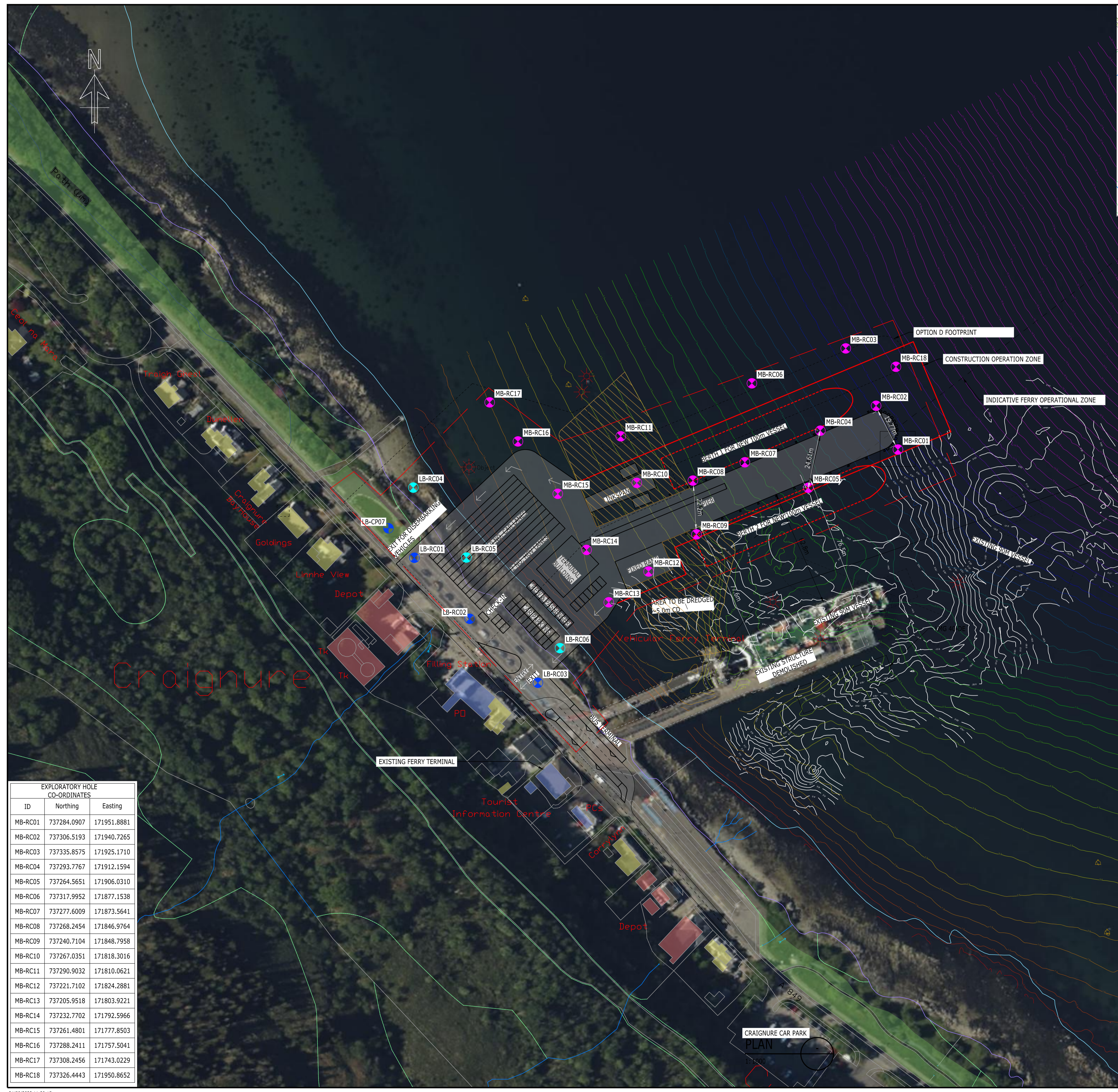
**OPERATIONS, MAINTENANCE**

- NOT REQUIRED

**DISMANTLING / DEMOLITION**

- NOT REQUIRED

REFER TO GENERAL NOTES AND THE PRINCIPAL CONTRACTOR FOR MORE INFORMATION ABOUT THE RISKS ASSOCIATED WITH THIS WORK.



**EXPLORATORY HOLE CO-ORDINATES**

ID	Northing	Easting
MB-RC01	737284.0907	171951.8881
MB-RC02	737306.5193	171940.7265
MB-RC03	737335.8575	171925.1710
MB-RC04	737293.7767	171912.1594
MB-RC05	737264.5651	171906.0310
MB-RC06	737317.9952	171877.1538
MB-RC07	737277.6009	171873.5641
MB-RC08	737268.2454	171846.9764
MB-RC09	737240.7104	171848.7958
MB-RC10	737267.0351	171818.3016
MB-RC11	737290.9032	171810.0621
MB-RC12	737221.7102	171824.2881
MB-RC13	737205.9518	171803.9221
MB-RC14	737232.7702	171792.5966
MB-RC15	737261.4801	171777.8503
MB-RC16	737288.2411	171757.5041
MB-RC17	737308.2456	171743.0229
MB-RC18	737326.4443	171950.8652