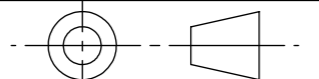
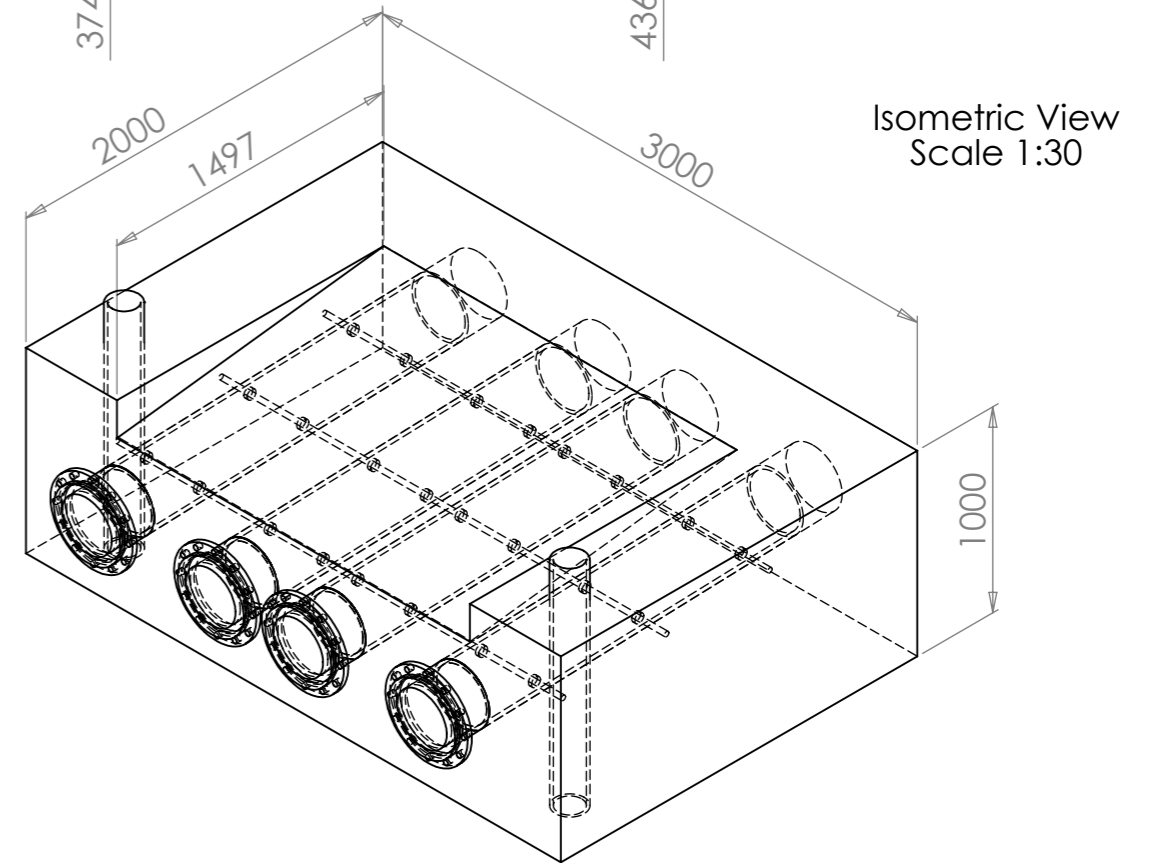
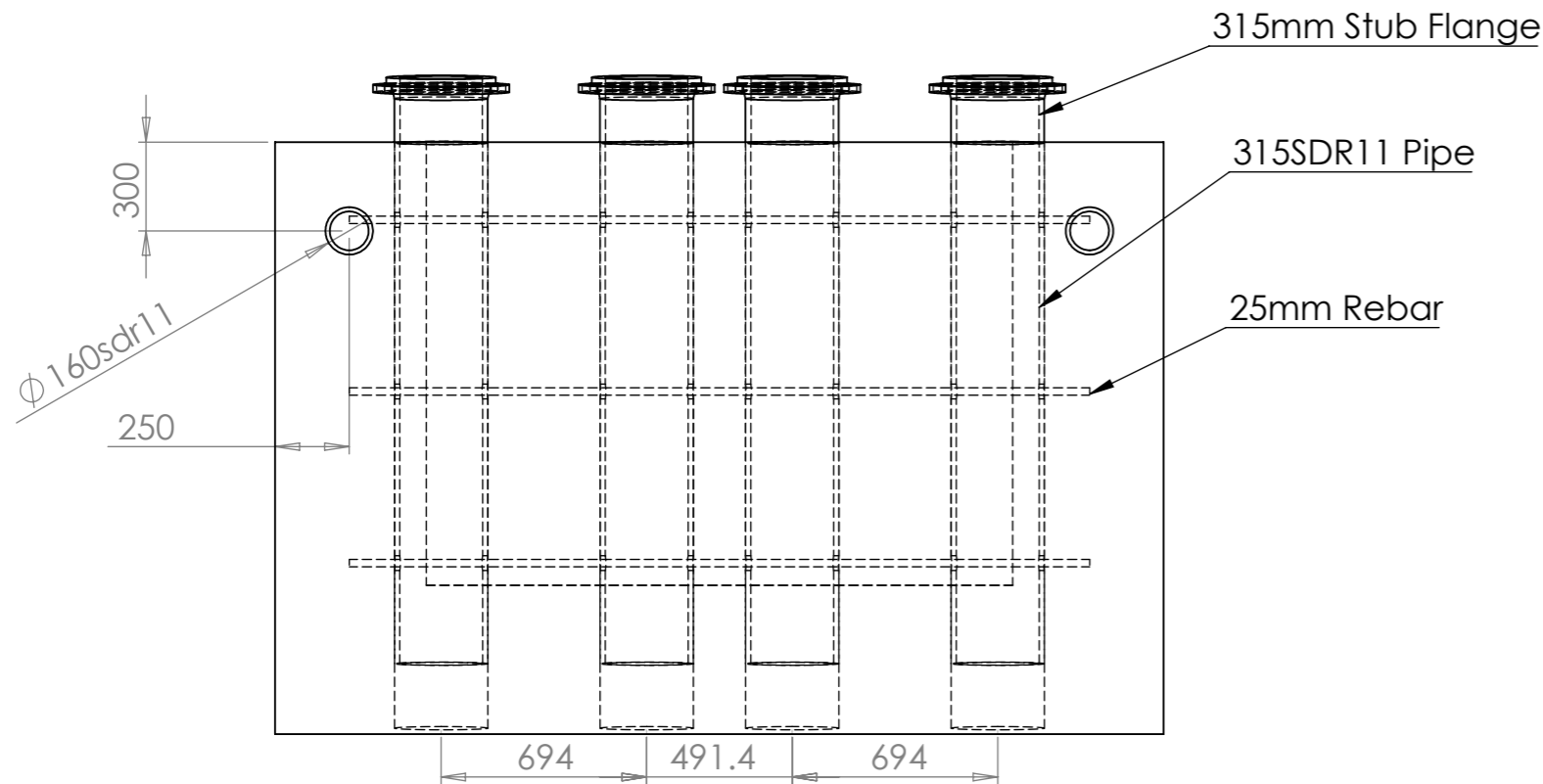
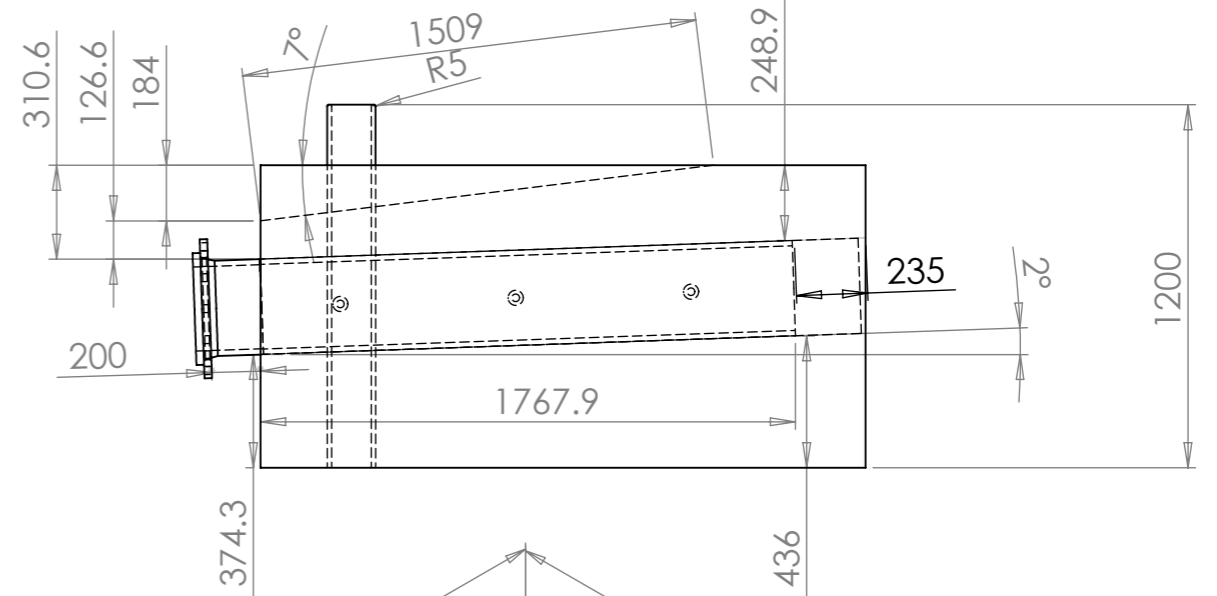
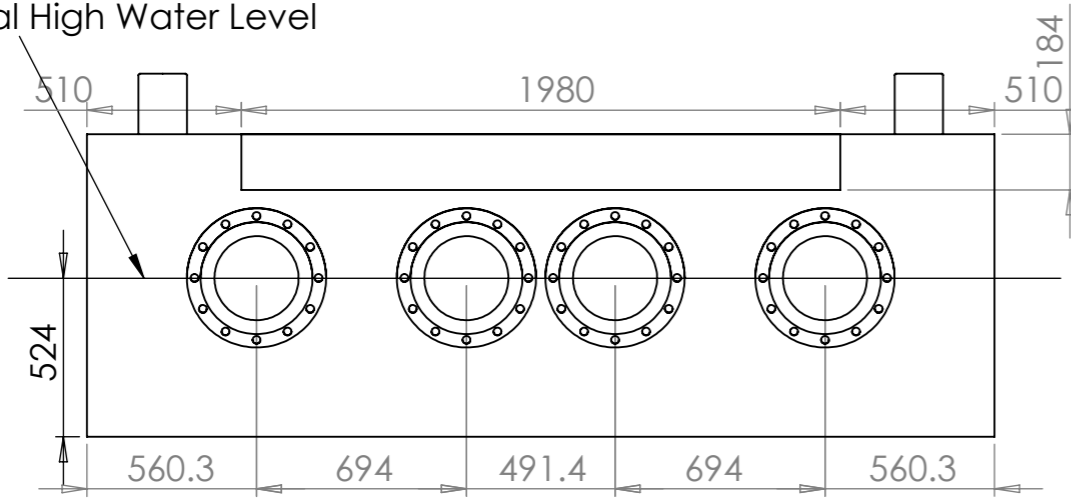


3rd Angle Projection 		If In Doubt Ask ~ Do Not Scale		Dimensions are in mm	Date	Rev	Details of Revision
Job Number	Customer	Date			25/04/2016	E	Alignment holes increased to 50mm
					04/04/2017	F	BOM Updated
					05/04/2017	G	160mm Cast Socket Added
					31/07/2020	H	315mm Pipes Upgraded to SDR11

Astronomical High Water Level



Important

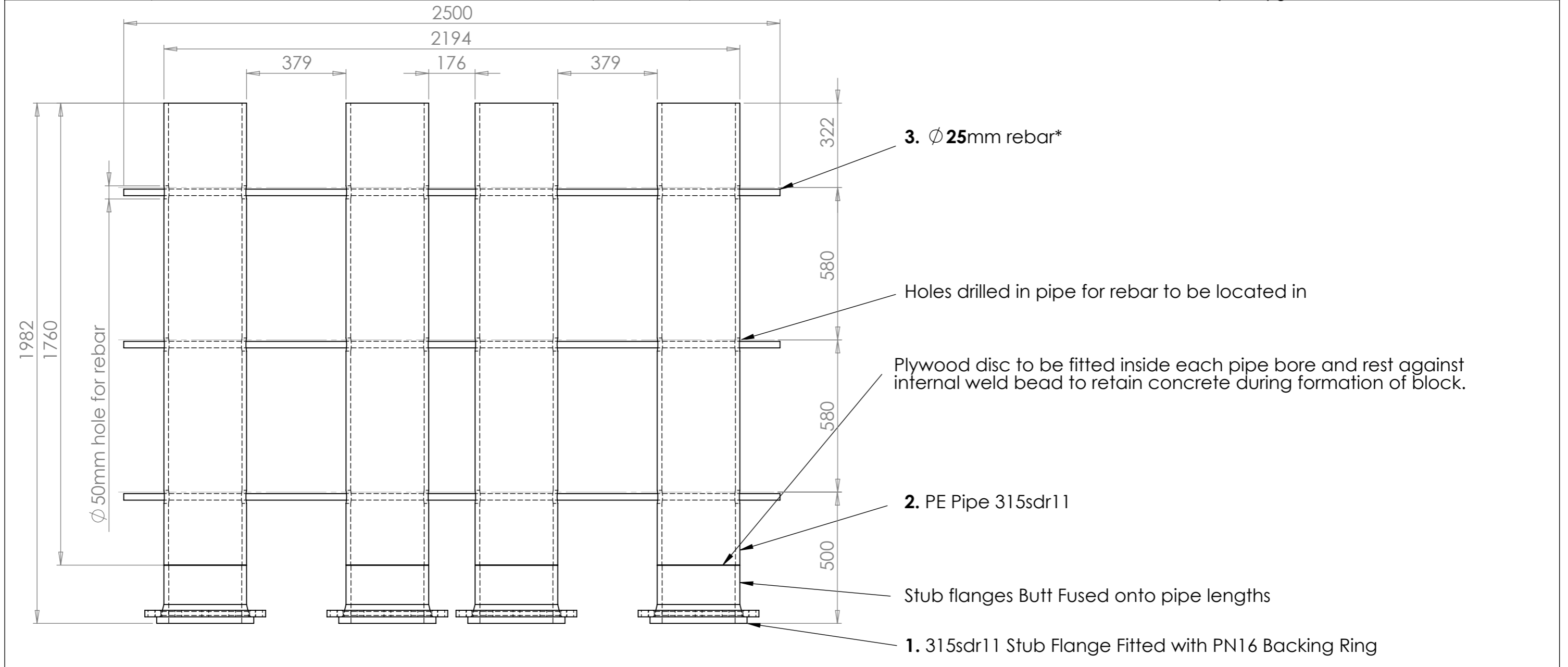
1. Bridgehead 315 Pontoon Block must be built upon solid and suitable foundations for pontoon application
2. Bridgehead 315 Pontoon Block must be installed by a competent contractor
3. Drawing depicts minimum construction requirements for embedded flanges
4. * Rebar to be supplied by customer/contractor
5. Shore line below pontoon to be graded and built up (as necessary) so pontoon adequately supported at low tides



Gael Force Fusion - Main Office (Sales & Admin)
European Marine Science Park
 Suite 5, Malin House
 Dunbeg
 By Oban
 Argyll PA37 1SZ

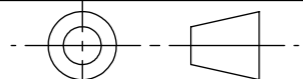
Title: 315mm Pontoon Bridgehead Block with Cut Away			
Material: PE 100		Finish: Black	
Drawn: R.MacDonald	Scale: 1:25 @A3	Drawing No.	Rev
Date: 21/02/2012	Reference Drgs FanScaf Fab2 Stub315 Ass	PON315BRH	H
Checked:			
Verified:			

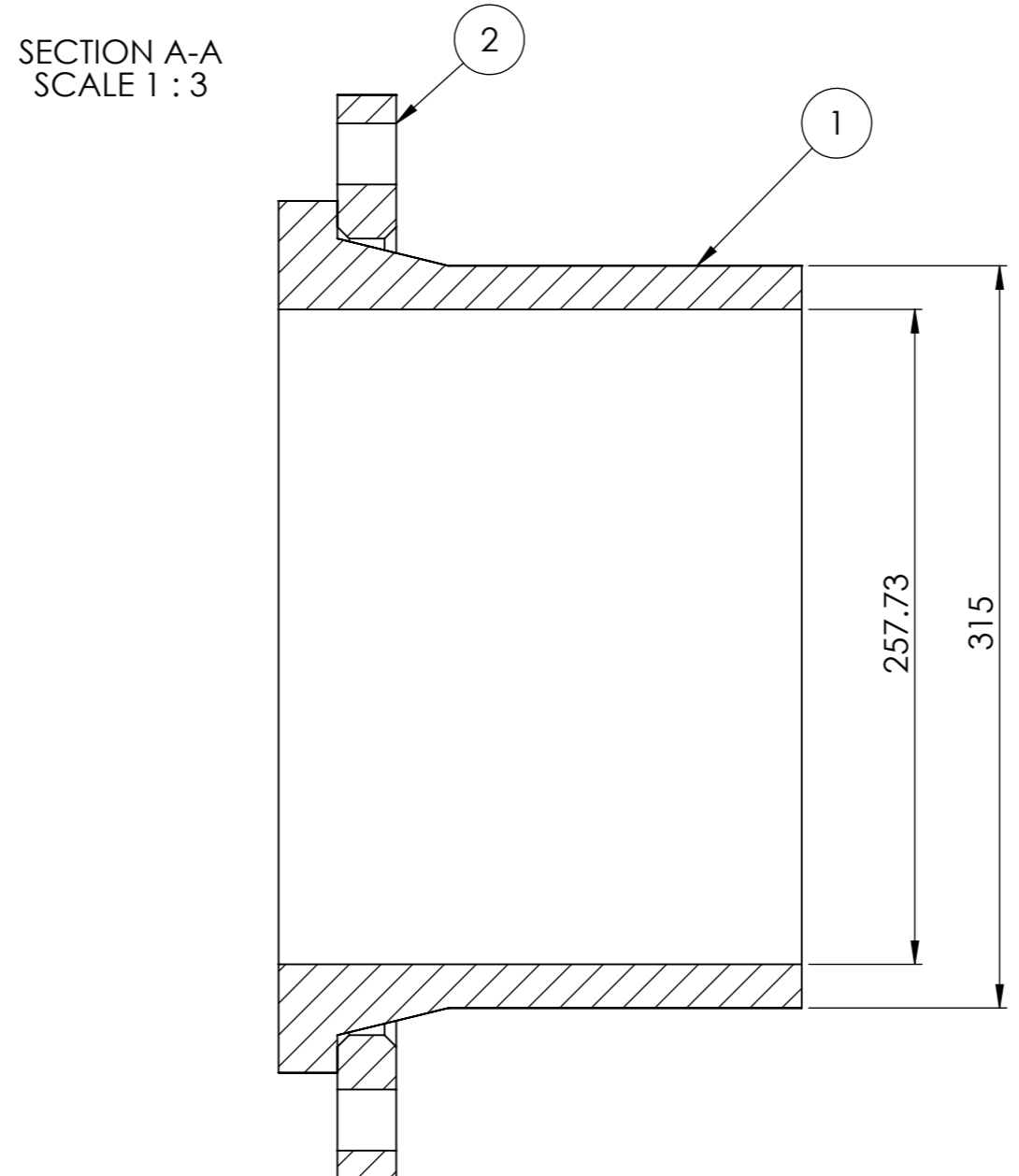
3rd Angle Projection			If In Doubt Ask ~ Do Not Scale	Dimensions are in mm	Date	Rev	Details of Revision
Job Number	Customer		Date		25/04/2016	E	Alignment holes increased to 50mm
					04/04/2017	F	BOM Updated
					05/04/2017	G	160mm Cast Socket Added
					31/07/2020	H	315mm Pipes Upgraded to SDR11



Part No.	Description	Qty	Total	Picked	Despt	Despt	Comment /PO
1	315sdr11 Stub Flange DN300 PN16 (See drawing Stub315 Ass)	4					
2	PE Pipe 315sdr11 x 1760mm	4					
3	Rebar Ø 25mm x 2500mm*	3	-	-	-	-	* Rebar to be supplied by customer/contractor
4	PE Pipe 160sdr11 x 1200mm	2					Shrink wrap + radius socket edges R5

	Gael Force Fusion - Main Office (Sales & Admin) European Marine Science Park Suite 5, Malin House Dunbeg By Oban Argyll PA37 1SZ		Title: 315mm Pontoon Bridgehead Block with Cut Away	
			Material: PE 100	Finish: Black
	Drawn: R.MacDonald	Scale: 1:15 @A3	Drawing No.	Rev
	Date: 21/02/2012	Reference Drgs PON315BRH Stub315 Ass	FabScaf Fab2	H
	Checked:			
Verified:				

3rd Angle Projection			If In Doubt Ask ~ Do Not Scale	Dimensions are in mm	Date	Rev	Details of Revision
Job Number	Customer	Date			25/04/2016	E	Alignment holes increased to 50mm
					04/04/2017	F	BOM Updated
					05/04/2017	G	160mm Cast Socket Added
					31/07/2020	H	315mm Pipes Upgraded to SDR11



Part No.	Description	Qty	Total	Picked	Despt	Despt	Comment/PO
1	315sdr11 Stub Flange PE100 Long Spigot	1					
2	DN300 PN16 Hot Dip Glav Backing Ring	1					
3	Bulkhead Disc 15mm x ϕ 276.5mm PE Sheet	0					
4	Weld Rod Black 4mm 5kg Drum						



Gael Force Fusion - Main Office (Sales & Admin)
European Marine Science Park
 Suite 5, Malin House
 Dunbeg
 By Oban
 Argyll PA37 1SZ

Title: 315mm Stub Flange Assembly			
Material: PE 100		Finish: Black	
Drawn: R.MacDonald	Scale: 1:5 @A3	Drawing No.	Rev
Date: 21/02/2012	Reference Drgs PON315BRH FabScaf Fab2	Stub315 Ass	H
Checked:			
Verified:			